



SHANTA HOLDINGS

A Legacy of Excellence

In the heart of Dhaka, where every corner carries stories of aspiration and growth, Shanta Holdings has been weaving its own tale of transformation since 2005. What began as a vision to reshape the city's skyline has over time turned into a legacy of uncompromising quality, innovation and reliability. Over the past two decades, the company has delivered more than 10 million square feet of space, completing 55 iconic projects that have set new benchmarks for innovative designs, superior build quality and trendsetting lifestyle amenities. With landmark projects across Dhaka's most prominent neighborhoods, Shanta has become a symbol of trust and continues to redefine luxury real estate in Bangladesh through its focus on innovation and excellence.

The company's residential journey began with a series of remarkable projects. "Digonto" at Paribagh was the country's first true condominium, comprising 150 units with state-of-the-art lifestyle amenities. It also introduced the concept of a grand double-height reception in residences. Following that, "Garden" at Eskaton became the second

commercial building of its time and the nation's first high-rise steel structure – an engineering achievement for the industry. Shortly after, "Skymark" in Gulshan set a new benchmark by being the first building in Bangladesh to feature a fully unitized double-glazed curtain wall system, setting a new standard for high-spec building facades. The most recognizable landmark came in 2022, "Forum" – the 25-storied twin towers in Tejgaon, which combined iconic architecture with high-spec, energy-efficient electromechanics, stunning aesthetics, an awe-inspiring plaza and atrium, with superior construction quality. "Forum" stands today as Dhaka's premier business



address and an architectural marvel. And now next to it, "Pinnacle" is nearing completion as the first 40-storied skyscraper of Dhaka, shaping the future skyline of the city and symbolizing a bold new era of progress.

These commercial landmarks have become the addresses of choice for leading multinational and local corporates alike including Unilever, Deloitte, Levis, HSBC, Marico, Robi, Sumitomo, Syngenta and many more, reflecting the uncompromising standard that Shanta has set in the industry. These prestigious achievements have earned Shanta



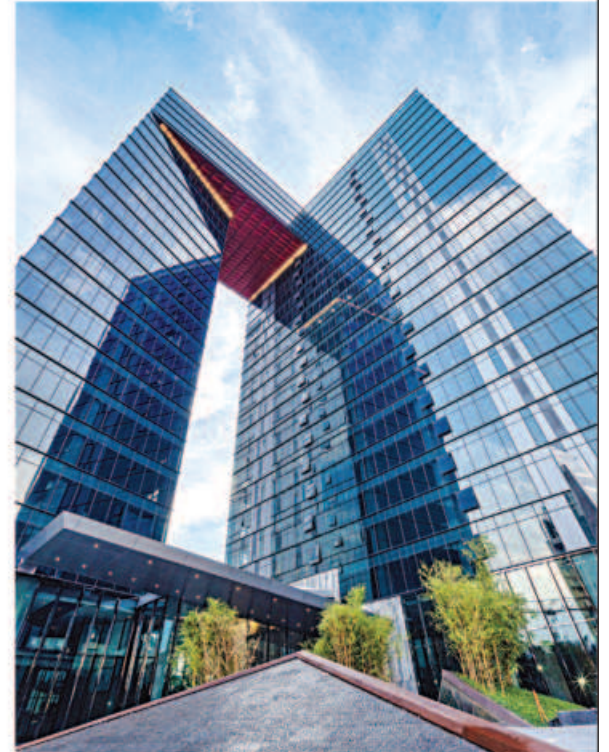
numerous awards and recognitions, the latest being the Superbrand award in real estate for the fourth consecutive term. Such accolades reflect the admiration of the people and the lasting impact the company has made on the city.

Looking ahead, Shanta will continue to transform the skyline with a significant portfolio of commercial and residential developments. The company has an ambitious pipeline of upcoming projects, ranging from the tri-state areas to



Dhanmondi, and emerging neighborhoods such as Bashundhara, Dumni at the 300ft expressway, Shornali Abashon. Aligning with its vision to meet the city's increasing housing needs, the company has begun expanding its presence in the rapidly growing neighborhood of Bashundhara with ten trendsetting residential projects. In addition, it is going to develop a destination mall there. Envisioned as a modern lifestyle hub, the mall will bring together premium retail, dining and entertainment all under one roof, setting new benchmarks for shopping and leisure in the city.

On the commercial front, the ongoing project "Dhaka Tower" is the most anticipated, 1.5 million sft, 500-feet-tall development of the city. The project is designed by the world-renowned studio, "Office for Metropolitan Architecture" (OMA),



Netherlands. It is envisioned to become the most recognizable modern landmark of Dhaka, boldly representing Bangladesh on the global stage and symbolizing the country's remarkable economic progress. Moreover, two more high-rise commercial towers, "Zenith" and "Vista", are scheduled to begin construction soon. These towers will provide new investment opportunities in world-class office spaces while redefining the Tejgaon skyline, also setting benchmarks for sustainability and green building through LEED Platinum certification.



Throughout its journey, Shanta has remained committed to excellence in design innovation, advanced construction methodologies, the use of top-quality materials and uncompromising safety standards. Each landmark created by the company stands as a symbol of progress and prosperity, contributing to the nation's development and improving lifestyles. As these projects continue to redefine Dhaka's skyline, they not only represent architectural achievements but also fuel Bangladesh's journey toward a brighter future.



condominium, offering 100 units designed with professional landscaping, lighting and superior lifestyle facilities that created a vibrant community living environment. The third condominium, "The Vantage," located by the scenic Hatirjheel lakeside, features 110 units with exclusive amenities that transformed the Banasree locality. Another landmark achievement was "Chandralok" at Banani, which was completed in just 18 months, setting a record as the fastest residential project in the country. It was also the first FAR-compliant building and the first residential project to feature a parking-free ground floor. Over the years, Shanta has also become the most sought-after luxury developer in Gulshan, Baridhara and Banani. Having developed an impressive portfolio of ultra-luxury projects like "Northern Lights", "The Regal", "Lumiere", "Nunita", "Olympus" and several others, it has boldly established itself as the leading developer in the tri-state area. The company has also expanded to cater to a broader segment of the market. In Bashundhara, its first residential project, "Shwapnoneer", brought the same commitment to excellence and set its superior standard of living in the locality.

In parallel, Shanta achieved a series of landmark accomplishments in commercial developments. In 2011, "Shanta Western Tower" at Tejgaon emerged as the country's first state-of-the-art commercial building of international standards and a majestic triple height atrium, envisioning and initiating the transformation of the once Tejgaon Industrial Area into a commercial hub. This first step encouraged other developers to follow suite soon after and Tejgaon has now become the city's new bustling commercial hub. "The Glass House" on Gulshan Avenue, became the most iconic

