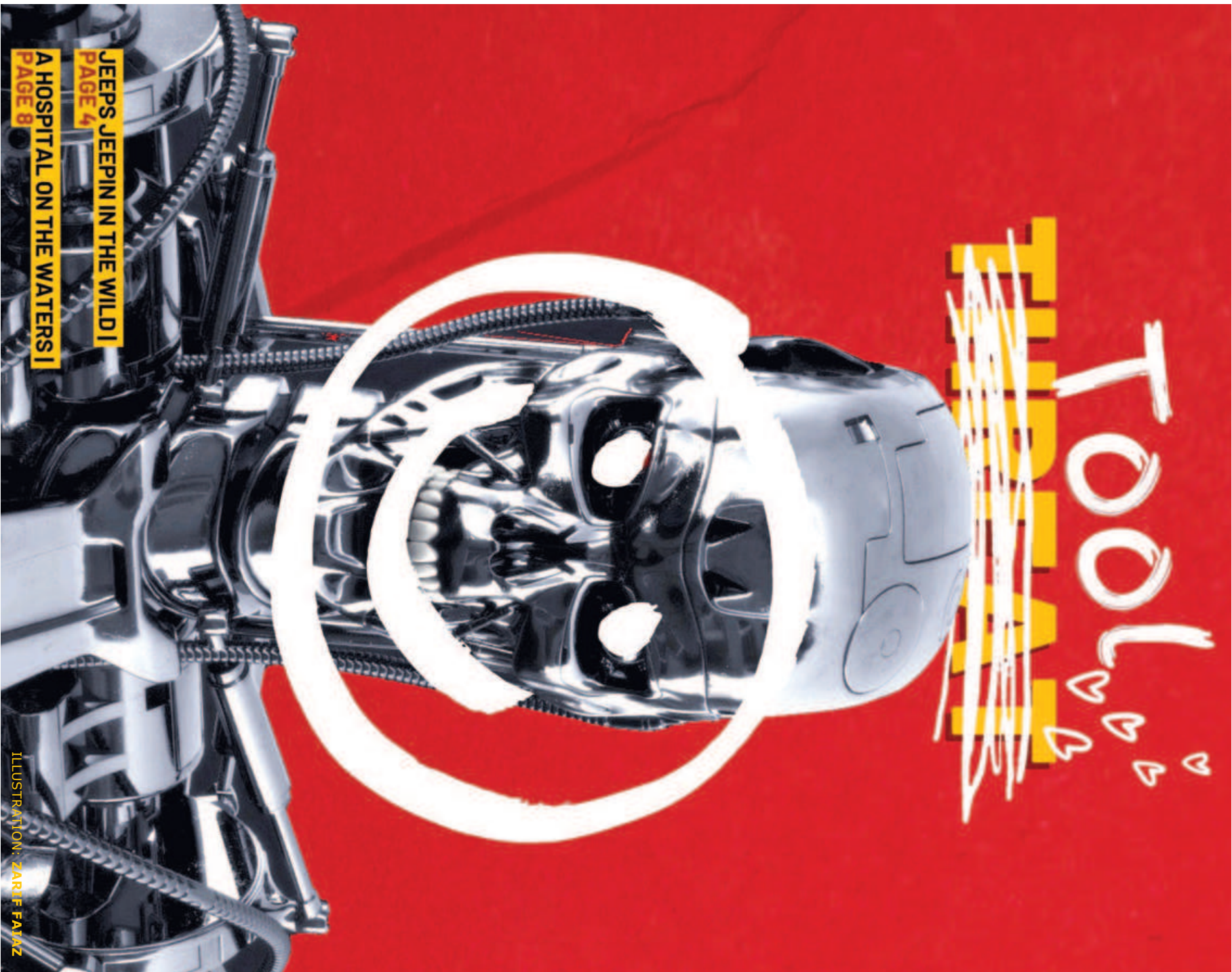


TOGGLE

WEEKEND LIVING IN THE DIGITAL AGE

A publication of *The Daily Star*



Terminates Bacteria & Keeps Food Fresh for Longer

WALTON
Smart Fridge

GI ionizer
INTELLIGENT GERM TERMINATOR

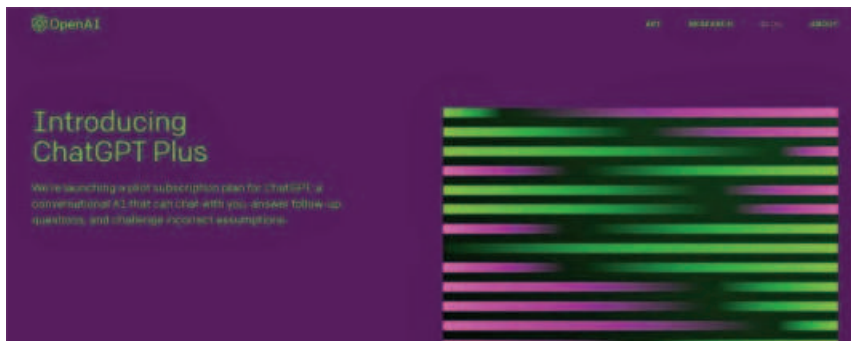
30MSO INVERTER
12 Years SUVARANTEE
IOT SMART REFRIGERATOR

waltonbd.com | For Details: 16267 0800016267 (toll free)

ChatGPT introduces subscription plan starting at \$20 per month

OpenAI has taken the next step in monetising its popular text-generating AI, ChatGPT, with the launch of a new pilot subscription plan, ChatGPT Plus. ChatGPT Plus offers several benefits over the base-level ChatGPT, including guaranteed access to ChatGPT during peak times, faster response times, and priority access to new features and improvements. The subscription starts at \$20 per month and is currently only available to customers in the U.S.

The company has hinted that ChatGPT Plus may be the first of several subscription plans, with the company actively exploring options for lower-cost plans, business plans, and data packs, in addition to an API. However, the free ChatGPT tier will remain available to users.



OpenAI will begin the process of inviting users from its waitlist in the coming months, with plans to expand ChatGPT Plus to additional countries and regions soon. The launch of ChatGPT Plus was previewed in early January, with OpenAI announcing

its plans to monetize ChatGPT and publishing a survey outlining the potential pricing and features for a ChatGPT Professional plan. A recent error saw several ChatGPT users granted access to a pro tier at \$42 per month.

EDITOR'S NOTE

Threat or Opportunity?

There has been a lot of talk about how Artificial Intelligence will replace humans and take over their jobs. But will it really? Dive into our Cover Story to find out why AI will not replace you.

On Shift, we take you on a joy ride through the tea estates with the country's very own Jeep Club.

We also put the spotlight on a floating hospital that has been making waves and providing medical services to people in remote areas.

That's a wrap. Hope you have a great weekend.

- Tanzid Samad Choudhury
Sub-Editor

Misuse of AI: Deepfakes flood web forum

A British AI firm said it was rethinking its "safeguards" after its audio tool was used to clone celebrity voices and have them say racist and homophobic slurs.

Eleven Labs recently tweeted that it had been a "crazy weekend" and admitted to finding "an increasing number of voice cloning misuse cases" just days after it released a demo version of the tool.

The firm did not give details of the cases but the internet forum 4chan was flooded with deepfakes of celebrity voices using racist, sexist and homophobic slurs.

Many of the posts mentioned Eleven Labs, with some users claiming to have been banned by the firm and others providing links to the demo version of the tool.

Celebrities who came in for

treatment on the forum, which is notorious for its offensive humour, included the stars of the Harry Potter films, and film directors Quentin Tarantino and George Lucas.

Eleven Labs has touted its voice cloning technology as having "the potential to revolutionise the way content is produced, delivered and interacted with across a range of industries".

In its publicity material, the firm produced a video of actor Leonardo DiCaprio being voiced by several other celebrities.

The firm tweeted that its technology had been "overwhelmingly applied to positive use" but said "additional safeguards" were needed.

Among the options it was considering were manually verifying

each cloning request or tightening account verifications.

AI tools are trained on vast swathes of data, pictures, audio, text or video, that allow them to essentially predict what output the user would like.

Text tool ChatGPT has taken the world by storm with its ability to generate essays to a relatively high standard with just a few prompts.

Imaging tools like Dall-E 2 and Midjourney are threatening to upend the art and design world with their ability to generate complex images in the style of famous artists.

But critics have long expressed fear that cloning technology, particularly in audio and video, could lead to a flood of deepfakes and disinformation.

And several AI companies are facing lawsuits from people who allege the firms have breached copyright by using their material as a basis for the AI models.



OpenAI

ChatGPT maker launches tool to detect AI-generated text

OpenAI, the creator of the popular chatbot ChatGPT, has released a software tool to identify text generated by artificial intelligence, the company said in a blog post recently.

ChatGPT is a free program that generates text in response to a prompt, including articles, essays, jokes and even poetry, which has gained wide popularity since its debut in November last year, while raising concerns about copyright and plagiarism.

The AI classifier, a language model trained on the dataset of pairs of human-written and AI-written text on the same topic, aims to distinguish text that is written by AI. It uses a variety of providers to address issues such as automated misinformation campaigns and academic dishonesty, the company said.

In its public beta mode, OpenAI acknowledges the detection tool is very unreliable on texts under 1,000 characters, and AI-written text can be edited to trick the classifier.

OpenAI said it is engaging with educators to discuss ChatGPT's capabilities and limitations, and will continue to work on the detection of AI-generated text.

PayPal to lay off 2,000 employees

Payments firm PayPal has said it is planning to cut 7% of its workforce, or about 2,000 employees, the latest in a list of fintech firms to be hit by the economic slowdown.

The payments firm also joins Big Tech firms and Wall Street titans, which are executing layoffs as companies look to rein in costs to ride out the downturn.

PayPal's move to keep a tight lid on costs comes against the backdrop of decades-high inflation hitting the purchasing power of consumers who also have to contend with the threat of a looming recession.

In November, PayPal had cut its annual revenue growth forecast in anticipation of a broader economic downturn and said it did not expect much growth in its US e-commerce business in the holiday quarter.

Executives at the company said at the time that a challenging macro environment, and slowing e-commerce trends were pushing it to be prudent with its forecast.



Banglalink deployed 4000 new towers as part of its nationwide network expansion drive

Telecommunications brand Banglalink deployed nearly 4000 new Base Transceiver Stations (BTS) last year as part of its nationwide network expansion drive.

The expanded network has enabled more customers across the country to enjoy its fastest 4G network and quality digital services.

An event was held to celebrate the significant milestone at Bangladesh Telecommunication Regulatory Commission (BTRC) in the presence of Shyam Sunder Sikder, Chairman, BTRC, and Erik Aas, Chief Executive Officer, Banglalink, among others.

With the successful deployment of these BTS sites, Banglalink's total sites increased to more than 14,500, resulting in around 40% expansion of Banglalink's total coverage.



How to do proper referencing in your academic papers

AHMAD TOUSIF JAMI

Referencing is an essential aspect of academic writing. It helps credit the sources you have used in your research and ensures that your work is based on sound evidence. Especially for students, this helps to ensure that the work they are submitting is original. Both Undergraduate and Postgraduate students will often find the need to do proper referencing for their papers and theses, and as such, here are some essentials to keep in mind when compiling references for your academic courses.

Understanding the referencing style

Before you begin referencing your sources, you must understand the referencing style required for your paper. Different academic disciplines and universities have different referencing styles, such as MLA, APA, Harvard, and more. There is no specific rule on which format is used where. These formats vary in its style of bibliography, in-text referencing, and more based on the information needed to do so.

"You can utilise a relevant style guide or manual to ensure that you are formatting your references correctly," said Dr Shanawez Hossain, Researcher & Assistant Professor at Independent University, Bangladesh. He explains that these citation manuals are typically user-friendly, so there is no need to feel intimidated.

Keeping track of your sources

As you conduct your research, keeping track of your sources is vital. For instance, you can create a bibliography or reference list as you go along. These sources should typically include peer-reviewed journals, book chapters and more in your relevant field of work. Depending on your need and style, a citation manager can help you to organise your sources and automatically format your references in the correct style.

It would be best if you also took detail when you are reading and researching,

including the complete bibliographic information of the sources you are using, such as the full name of the journal or book, as well its title, date of publication, publisher details, page number etcetera. This will make it easier for you to find the sources again if you need to check or cite them in your paper.

Citing your sources in the text

When you use information from a source in your paper, you may need to cite it in the text to give the due credit. This is known as an in-text citation. The format of in-text citations varies depending on your referencing style, but they typically include the author's last name and the publication year. For instance, it could be used after a sentence in the first bracket e.g., (Khan, 2023), to indicate that the sentence was written by the author in that year. However, there are various other methods to write in-text citations based on your institution's preferred format, so do not hesitate to contact your supervisor if you have any confusion.

Moreover, according to Muhammad Awfa Islam, Assistant Professor at the University of Dhaka, "Regular assignment as a part of the coursework with proper referencing can also be placed before the graduate admission committee as an academic writing sample while applying abroad." Top universities and their academic programs give high importance to proper referencing practices.

Creating a reference list or bibliography

A reference list or bibliography lists all the sources you have used in your paper. The format of this list will vary depending on your referencing style. Still, it should include all of the bibliographic information for each source, such as the author's name, the publication date, and the work's title. This can be done manually or using softwares such as Mendeley, Zotero or Paperpile.

Yasin Shafi, lecturer at Bangladesh University of Professionals, shares, "Microsoft Word has a simple yet effective built-in reference tool in the References tab." He further explains that this tool can produce citations in different formats and is easy for all sorts of users. This can be used as an alternative to other reference-generating applications.

Use of plagiarism checker

"In academia, we address plagiarism with zero tolerance, and therefore we strongly recommend that whatever work you do is original and reflects your understanding of the issue," shares Md. Ohidujjaman, Senior Lecturer at Independent University, Bangladesh. He further recommends making sure that due credits are given to anyone whose work has been used in your paper.

It is essential to use plagiarism checkers to ensure the originality of your work. There are several online plagiarism checker tools available for free such as Scribbr and paid versions such as Turnitin. These tools help you identify if any text in your paper matches any existing text on the internet.

Seek help if unsure

Mr Awfa suggests reaching out to your instructor or supervisor for guidance if and when you need it. According to him, "Proper referencing practices can be only encouraged if the course instructor can emphasise on the importance of referencing properly as an academic requirement and for any scholarly work the student may get involved in the future."

Another excellent resource for help with referencing is your university or college's library. Many libraries have guides and tutorials on referencing your sources correctly, and librarians are often available to provide one-on-one help and advice. Plagiarism should be treated seriously as it can lead towards a loss of reputation, revocation of a completed degree, cancellation of research funds and other forms of punishments as it is not acceptable in the academic world.



The country's only customized steel solution

FASTBUILD PROVIDES
RODS OF ANY SHAPE AND
SIZE AS PER DESIGN



Jeeps in the wilderness

ABRAR SHAREQUE KHAN

PHOTOS:
ABRAR SHAREQUE KHAN



Most people in Bangladesh refer to “Jeep” as SUVs or even Crossovers, what they don’t know is that Jeep is an American automobile manufacturer that introduced SUVs to the world.

The term SUV was first used in the brochure of the full-sized Jeep Cherokee SJ in 1974 but the first ever SUV is considered to be the 1984 Jeep Cherokee XJ, other than that Jeep vehicles were used by the U.S military during World War II.

Last Friday, Jeep Bangladesh hosted an event which was more of a trip for forming a club for Jeep owners. The journey started with everyone gathering at 300 feet road in front of Australian International School around 6:30 a.m. We waited there for everyone to arrive and meanwhile we had a light breakfast since we were running behind schedule and it was a very long drive.

At 7:30 AM, everyone arrived and we set sail and started the journey. There was a roadside assistance car that escorted us and helped line up all the Jeeps. Soon enough we reached the first toll booth for entering the highway. Of course, Jeep

Bangladesh had got us covered and we entered the highway.

Upon entering the highway, after going a bit, we switched routes and opted for a shortcut through a village, the roads were very narrow and not in the best condition, it was almost like touge, with hairpin blind corners and cars coming from the opposite side, took us almost an hour to cross that area and go up to the highway again.

We cruised along the highway till we reached Jannat Restaurant and Resort for a proper breakfast, it was a really short break and we got back to the road as soon as everyone finished. The next stop was around 1 PM for Friday prayers at the nearest mosque there and after that, we didn’t stop anywhere else as we still had quite a bit to travel and the daylight was going away.

After 9 and a half hours of travelling, we finally reached our destination: Nazimgharh Wilderness Resort in Lalakhal, next to the Bangladesh-India border. Lunch was served right after we checked in and after we had lunch and rested for some time.

Around 8 PM, Jeep Nations Club launch event was in order which meant live music, BBQ and the showcase of all the Jeeps there. The live music by Blues Brothers and Soul Sisters started upon going to the spot and a few moments later the Jeeps started to fill up the spot.

The first one to enter was also the oldest and most unique of the bunch,

a Jeep Cherokee XJ, which has a 4-litre displacement, inline 6, 12 valve, petrol engine. Back then the big displacement was used to produce torque, so, even though it has just 176 horsepower, it produces about 301 nm torque which is great for off-roading. After that, slowly the new Jeep Wranglers started to enter.



Most of them were Rubicons with 3.6-litre V6 naturally aspirated engines with SELEC-TRAC 4X4 system in them. The SELEC-TRAC 4X4 system automatically engages four-wheel drive when it is required for maximum traction, giving you the best experience for off-roading. There was a turbo Sahara variant as well, 2-door, 4-door, hard top, and soft top, all the variants were there. All of them were parked pointing towards the live music stage. The bonfire started eight after the cars were parked, things that day wrapped up after the live music ended and it was time for dinner.

The next day after breakfast we went off-roading towards zero point, displaying the off-roading capabilities of the cars and it was no surprise they handled it like a champ and wanted more. After an hour of sweaty and sandy off-roading, we headed back to the resort, freshened up and started to head back to Dhaka.

On the way back we had lunch at Grand palace and made several other stops along the way, after another long 10 hours the journey had finally ended.

AI WILL NOT REPLACE YOU, BUT PEOPLE WHO USE IT MAY

Artificial intelligence (AI) has been a hot topic for debate in recent times and has generated a lot of hype and speculation. Some believe that AI will soon replace most jobs and leave many people unemployed. However, this is a myth and a misunderstanding of the true capabilities and limitations of AI. Let’s take a look at why AI will not replace your job and why there is no need to fear its integration into the workforce.

First, AI is still in the early stages of development and has limited capabilities. It is not yet advanced enough to replace human intelligence and creativity. For example, AI can process and analyse large amounts of data quickly, but it cannot match human intuition, empathy, and critical thinking skills. These are unique human abilities that cannot be replicated by AI. Moreover, AI is still not capable of dealing with unstructured data and making decisions in complex situations, which are essential tasks for many jobs.

Second, AI is not designed to replace humans, but to enhance and augment their capabilities. AI is meant to be a tool that can assist humans in their work and make their lives easier. For example, AI can help doctors diagnose diseases by analysing medical images, but it cannot replace a doctor’s expertise, experience, and patient interaction skills. The goal of AI is to work with humans and help them do their jobs better, not to replace them.

AI also requires human oversight and

maintenance. AI systems require constant monitoring and updating to ensure they are functioning correctly and to avoid errors and biases. This means that there will always be a need for human experts who understand how AI works and can manage its deployment and use. In addition, AI algorithms require training and data sets to be updated regularly, which also requires human intervention.

There are also ethical and legal considerations that must be addressed when using AI in the workplace. AI algorithms can be biased and make unfair decisions if the data they are trained on is not representative or free from bias. There are also privacy and security concerns when it comes to the use of AI and the processing of personal data. These issues require human experts to oversee the use of AI and ensure that it is being used ethically and responsibly.

Finally, AI cannot replace the human touch in many jobs. For example, in customer service, personal interactions are crucial for building trust and understanding. AI-powered chatbots may be able to handle simple inquiries, but they cannot replace the emotional intelligence and empathy of human customer service representatives. Similarly, in education, personal interaction and mentorship are critical for student success, and AI cannot replace the role of teachers and instructors.

It is also important to note that AI is not a one-size-fits-all solution. The

potential applications of AI are numerous and varied, but it is not suitable for all jobs. Moreover, the impact of AI on the job market will depend on the specific industry and job type. Some industries, such as finance and healthcare, are likely to adopt AI more quickly and see more significant changes. Other industries, such as the arts and creative fields, are less likely to be impacted by AI. This is because AI is not yet capable of replicating human creativity, imagination, and artistic expression.

It is also important to consider the potential benefits of AI for workers and the economy as a whole. AI can help to increase efficiency, reduce costs, and improve productivity. This can lead to the creation of new and better-paying jobs, as well as the development of new industries and businesses. For example, the development of AI-powered customer service chatbots has created new jobs for experts who design and manage these systems.

Another important factor to consider is the role of government and employers in ensuring that workers are not left behind as AI is adopted in the workplace. Governments and employers have a responsibility to invest in training and education programs that help workers acquire new skills and stay relevant in the changing job market. This includes programs that help workers adapt to new technologies and prepare for the jobs of the future.

AI is a tool that can assist and augment human intelligence, not replace it. While AI has the ability to automate many routine tasks, it does not have the emotional intelligence, creativity, or ethical judgement that are unique to human beings. This means that AI is best used as a tool to enhance human capabilities, not as a replacement for human workers.

Now, the fun part. Parts of this argument were put forward by ChatGPT, the AI that many of us in the writing and editing field fear will replace us. We found its arguments convincing. But we also found our fears manifesting because of how well it constructed its arguments and how decently it was written, albeit without much creativity, emotion, or structure.

But as it argued, and it showed in its demonstration, the AI is nowhere near perfect. At least for now, it remains merely a tool. Like many of our counterparts, we at Toggle, will not shy away from using it for research and presentation, despite it possibly being our biggest threat.

By the looks of it, no doubt that in the near future, the tedious and repetitive work of research and non-creative writing will be taken up by AI, at least by some margin. But the fact that we still had to heavily edit, rewrite and reconstruct this entire article to get it ready for publication, tells us that, that day is not today.

Judgement day, not just yet. But John Connor better be ready.

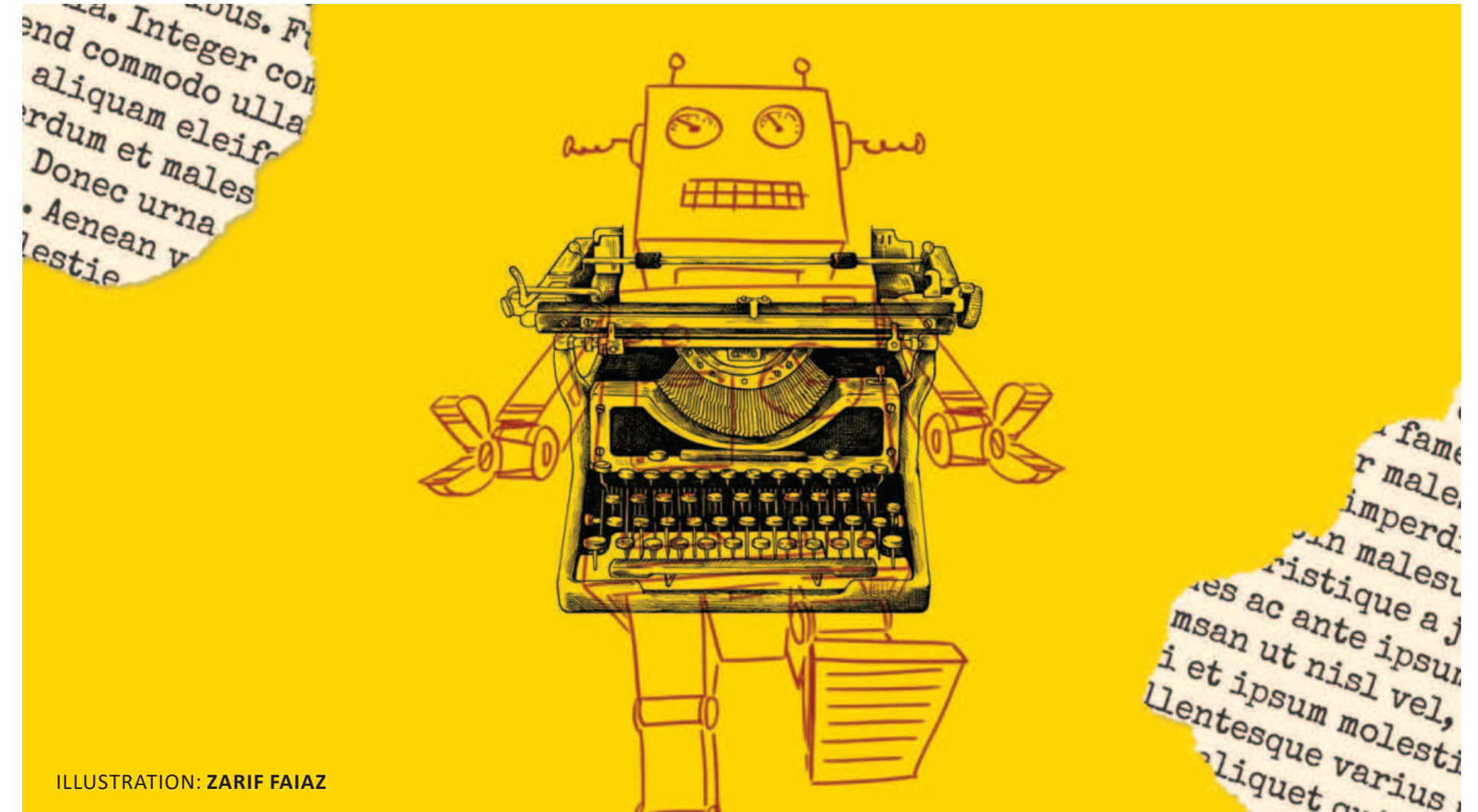


ILLUSTRATION: ZARIF FAIAZ



Bangladesh enters the world of high-tech underground mass transit

Bangladesh's first underground metro rail, the MRT-1, was inaugurated today by Prime Minister Sheikh Hasina. With this, Bangladesh's transport sector enters the world of underground mass transit. The 31.241-km first-ever underground and elevated MRT-1 will run between Airport-Kamalapur and Purbachal-Natun Bazar-Pitalganj.

Here are the top 5 features of the new MRT-1 that you need to know.

Soundless Tunnel Boring Machine
A Soundless Tunnel Boring Machine (TBM) is a type of tunnel construction equipment that operates without creating significant noise or vibration. This technology is designed to minimise the impact of tunnelling on the surrounding environment and communities. Soundless TBMs use advanced soundproofing materials and techniques, such as specialised cutting heads and sound-absorbing liners, to reduce noise levels.

They also employ vibration-damping systems to reduce ground-borne vibration during tunnelling. This makes them ideal for use in densely populated urban areas, where the reduction of construction-related noise and vibration



is of utmost importance.

The use of soundless TBMs will make it possible to build MRT-1's underground infrastructure without disrupting the daily lives of residents and businesses.

Automated fare collection system

The AFC system automates the fare collection process, reducing the need for manual ticket checking and improving the efficiency of the transportation system. It also enables real-time tracking of passenger journeys and revenue collection, making it easier for transport operators to manage their operations and track their financial performance.

In MRT-1, passengers will be able to use their MRT passes or Rapid Passes to utilise the AFC system.

The Operation Control Centre (OCC)

The Operation Control Centre (OCC) of the MRT-1 in Bangladesh is a high-tech facility designed to manage and monitor the operation of the underground metro rail system. The OCC will be equipped with advanced technology and tools, including real-time train tracking systems, communication systems, and computer-aided dispatch systems, to ensure the smooth and efficient operation of the MRT-1. The

OCC will be staffed by highly trained personnel who will monitor the train movements, manage passenger flow, and respond to emergencies. The OCC will also be responsible for ensuring the reliability and safety of the MRT-1 by continuously monitoring the system and taking corrective action if necessary.

Advanced soundproofing

The MRT-1 will employ various techniques and materials to reduce noise levels and vibration during tunnelling and train operations. This includes the use of specialised cutting heads and sound-absorbing liners, as well as vibration-damping systems. The trains themselves will also be designed with noise-reducing features, such as insulated cabins and the earth around the tunnels in the underground part of the MRT-1 will also help in soundproofing.

Sustainable and eco-friendly

The MRT-1 is also designed to be environmentally friendly and sustainable. It will run on electricity, reducing air pollution in the city. The construction of the project will also follow strict environmental standards to minimise its impact on the local community.





ILLUSTRATION: ZARIF FAIAZ

HOW TO BOOST YOUR LAPTOP SPEED

As laptops have become an integral part of our daily lives, it's natural to want to make sure they're running at their best. One of the most frustrating things that can happen is when your laptop becomes slow and sluggish, taking forever to load or run programs.

There are a few key ways you can boost the speed of your laptop and get it running smoothly again. Here are some tips to try:

Close unnecessary programs and processes

One of the biggest reasons laptops slow down is because they have too many programs and processes running at once. To free up some space, close any programs that you're not currently using. You can also use the Task Manager (Ctrl + Alt + Delete) to see which programs and processes are taking up the most resources and close them.

Delete temporary files

Temporary files are created when you use your laptop and can take up a lot of space on your hard drive. To delete

these files, go to the Start menu and type "disk cleanup" into the search bar. This will open a program that will allow you to delete temporary files, including Internet cache and temporary files created by programs.

Defragment your hard drive

When you save and delete files, they can become fragmented and scattered throughout your hard drive. This can cause your laptop to take longer to access these files, which can slow it down. To fix this, you can defragment your hard drive. To do this, go to the Start menu and type "defragment" into the search bar. This will open a program that will allow you to defragment your hard drive and arrange the files in a more organised way.

Remove unnecessary software

If you have a lot of software that you don't use, consider uninstalling it. This will free up space on your hard drive and make your laptop run faster. To uninstall software, go to the Start menu and type "add or remove programs" into the search bar. This

will open a program that will allow you to see a list of all the software installed on your laptop and allow you to uninstall anything you don't need.

Update your software

Make sure you're using the latest versions of your software and operating system. Software companies frequently release updates that fix bugs and improve performance. To update your software, go to the Start menu and type "update" into the search bar. This will open a program that will allow you to check for updates and install them.

Use a lightweight antivirus

Antivirus software can help protect your laptop from viruses and other malware, but it can also slow it down. If you're using an antivirus program that is causing your laptop to run slow, consider switching to a lighter version.

Clean your laptop

Dust and dirt can accumulate on

your laptop and cause it to run slower. To clean it, turn off your laptop and unplug it. Then, use a soft cloth to gently wipe down the exterior and the vents. This will help remove any dust and dirt that may be causing your laptop to overheat and slow down.

Add more RAM

Random Access Memory (RAM) is used by your laptop to store data that is being used or accessed frequently. If you don't have enough RAM, your laptop may struggle to keep up with your demands, causing it to run slowly. You can add more RAM to your laptop by purchasing and installing additional sticks.

Upgrade your hard drive

If you're using an old hard drive, it may be time to upgrade to a newer, faster one. Doing so can dramatically boost your laptop speed. To upgrade your hard drive, check out any of the local shops. The best place to look is always the computer market at IDB Bhaban.



LIFEBUOY FRIENDSHIP HOSPITAL

The remote healthcare solution on water

AHMAD TOUSIF JAMI

Healthcare is a fundamental human right, yet access to quality medical facilities remains a challenge in Bangladesh. Especially at the chars (river islands) in northern Bangladesh, where there is little to no road connectivity, over 10 million people suffer from the inaccessibility of traditional healthcare. Launched 20 years ago, Lifebuoy Friendship Hospital (LFH) aims to address the lack of healthcare in these difficult-to-access areas. This unique solution, introduced for the first time in Bangladesh, travels on water, providing medical services and medicines to marginalised communities. Let's take a look at how this travelling hospital on water functions.

The beginning

In 2002, a river barge brought from France to Bangladesh was converted into a hospital ship, and thus, the journey of LFH began. Zaved Akhtar, CEO and Managing Director of Unilever Bangladesh shared, "Realising healthcare challenges in many remote parts of Bangladesh, we partnered with the NGO Friendship 20 years ago to

start LFH." Since its inauguration, the primary objective has been to provide quality healthcare to remote communities living in the chars of Bangladesh. As these areas are cut off from the mainland, it is difficult to access them and inhabitants have thus far needed proper updated healthcare services.

Operational areas

LFH has thus far anchored in Dhaka, Manikgonj, Gopalganj, Munshigonj, Pabna, Pirojpur, Sirajganj, Bogura, Kurigram, Gaibandha and Jamalpur districts - delivering free healthcare services to the unaddressed communities. As per Zaved, LFH provides modern medical care to underprivileged people living in remote areas. Being free of cost, no one is excluded from getting the healthcare they deserve.

The hospital is open every day of the week throughout the entire year, except for the few days when it moves from one location to another. The local patients who have benefitted from LFH appreciate the service they receive daily, as accessing quality healthcare was much more difficult before. LFH being

remote also means that it can provide its services to many different regions.

Equipment

LFH is fully equipped with a primary health care unit. It also has secondary health care facilities, two operation theatres, a pathological laboratory and a digitalised X-ray room. The LFH team comprises doctors, nurses and other medical staff who offer a wide range of services, including gynaecology, dentistry, ophthalmology, paediatrics and general medicine. The ship can accommodate up to 30 people, primarily staff and crew members as well. Altogether, it is notable that a floating hospital can fit many pieces of equipment and individuals and has been sustained for many years.

Services provided

At LFH, a permanent team of expert medical groups, including general doctors, eye technicians, dental technicians (supervised by a dental surgeon), paramedics and nurses provide general and basic secondary healthcare. Along with medical care, LFH offers free medication and

health education to promote awareness of preventative measures.

Specialised medical camps are also arranged through an expert pool of local and foreign doctors who volunteer their time and respond to the specific needs in terms of essential tertiary services, such as repair of cleft palate, gynaecological operations, fractures and burn contractures. Other basic eye and ENT services via a specialised medical camp approach are also provided at LFH.

Over the past 20 years, LFH has catered to over 6,57,000 patients with about 1,066,600 healthcare services. Among them, more than 5,26,000 were for primary care and about 4,65,300 were for secondary care. The LFH, as the first of its kind in the nation, takes advantage of the river lines which constitute the majority of Bangladesh. Being a river-based country, having access to free medical services even in remote areas has been a huge boon for local inhabitants. Its unique geographical isolation coupled with healthcare innovation has helped LFH sustain itself since its inception.

