

# EVERCARE HOSPITAL DHAKA TRANSFORMING CANCER CARE IN BANGLADESH

## Centre of Excellence for Cancer Care

Evercare Cancer Care Centre provides consultations by Radiation & Clinical Oncologists, Medical Oncologists and Surgical Oncologists. Treatment for adult and paediatric cancer patients are provided through Radiation Therapy, Chemotherapy, Cancer Surgeries, ICU Care, Immunotherapy, Biotherapy, Supportive Therapy and Palliative care.

### COMPREHENSIVE CANCER TREATMENTS UNDER ONE ROOF

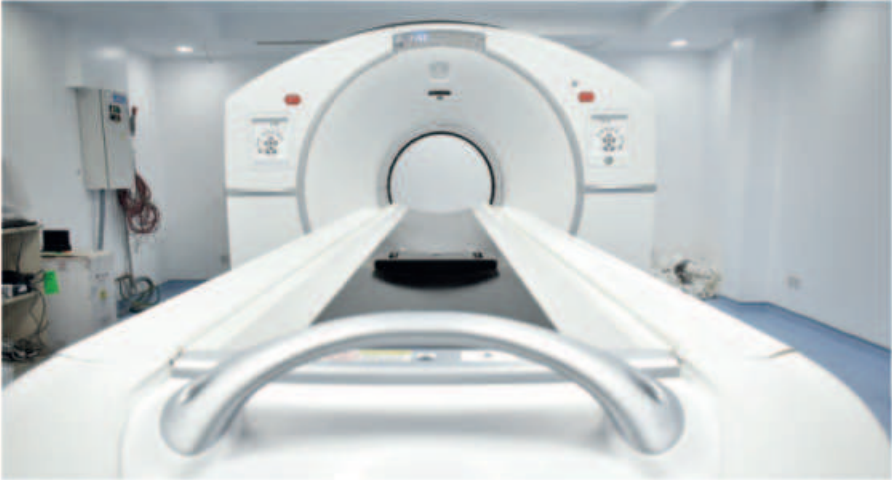
#### Our Departments:

1. Radiation & Clinical Oncology
2. Medical Oncology
3. Surgical Oncology
4. Pain & Palliative Care

- Esophagus & Lung Cancer Surgery
- Surgeries for Stomach, Large Intestine and Rectal Cancer
- Hepatobiliary & Pancreatic Cancer Surgery
- Surgeries for Uterus, Ovaries & Cervical Cancer
- Surgery for Kidney, Ureter and Urinary Bladder & Soft Tissue Sarcoma Cancer

### PAIN AND PALLIATIVE CARE SERVICES

- Radiotherapy
- Pain medications in an indoor facility



The centre is providing world-class cancer treatment facilities starting from preventive to palliative care under one roof.

### RADIATION ONCOLOGY SERVICES

- 3-Dimensional Conformal Radiotherapy (3D CRT)
- Intensity Modulated Radiotherapy (IMRT)
- Image Guided Radiotherapy (IGRT)
- Volumetric Modulated Arc Therapy (VMAT)
- Stereotactic Radiosurgery (SRS)
- Stereotactic Body Radiotherapy (SBRT)
- Stereotactic Radiotherapy (SRT)
- Total Body Irradiation (TBI)
- Brachytherapy
- Palliative Radiation Therapy

### MEDICAL ONCOLOGY SERVICES

- Outdoor Based Patient Management and Counselling
- Indoor Based Patient Management
- Daycare Based Chemotherapy
- Indoor Based Chemotherapy
- Indoor Based Supportive and Symptomatic Care

### SURGICAL ONCOLOGY (ONCO SURGERY) SERVICES

- Head & Neck Cancer Surgeries with Reconstruction
- Organ Preserving Surgery for Breast Cancer and other Cancers

### STATE-OF-THE-ART TECHNOLOGY

Evercare Hospital Dhaka has installed a high-end fully loaded Radiotherapy machine, LINEAR ACCELERATOR - VERSA HD Signature model. This machine is the first of its kind in Bangladesh. The machine is fitted with a six-dimensional rotation couch known as HEXA POD and is programmed to deliver radiation doses to tumours with pinpoint accuracy from any angle. VERSA HD, as the name suggests, has versatile properties and is capable of treating tumours in either a basic conventional form or the most advanced form of therapy "Stereotactic Radiotherapy". Our ultramodern radiotherapy unit is managed by well-known professionals in the field of oncology from both home and abroad.

The centre is also equipped with an ultramodern HDR Brachytherapy (treatment of cancer by the insertion of radioactive source directly into the body cavity and tissues) unit "FLEXITRON" which houses Cobalt 60 as a radiation source, thus ensuring uninterrupted treatment due to the long half-life of the source.

Evercare Hospital Dhaka has the most advanced PET-CT machine, which is being used for its cutting-edge technology to stage, plan, manage and monitor the treatment of the tumour or tumours in question.



## OUR TEAM OF EXPERTS



**Dr. Abu Jafar Mohammed Saleh**  
MBBS, FCPS (Haematology)  
**Senior Consultant & Coordinator**  
**Haematology & Stem Cell Transplant**

For more info scan the QR code or visit:  
<https://www.evercarebd.com/profile/?cid=339>



**Dr. Ferdous Shahriar Sayed**  
MBBS, MD (Radiotherapy)  
**Senior Consultant & Coordinator**  
**Medical Oncology**

For more info scan the QR code or visit:  
<https://www.evercarebd.com/profile/?cid=539>



**Major (Retd.) Dr. (Prof.) Shibashish Bhattacharyya**  
MBBS, MD (Medicine), DM (Medical Oncology)  
**Senior Consultant**  
**Medical Oncology**

For more info scan the QR code or visit:  
<https://www.evercarebd.com/profile/?cid=575>



**Prof. Dr. Narendra Kumar**  
MBBS, MD, MAMS  
**Senior Consultant & Coordinator**  
**Radiation Oncology**

For more info scan the QR code or visit:  
<https://www.evercarebd.com/profile/?cid=555>



**Dr. Arman Reza Chowdhury**  
MBBS, FCPS (Radiotherapy)  
**Consultant**  
**Radiation Oncology**

For more info scan the QR code or visit:  
<https://www.evercarebd.com/profile/?cid=589>



Don't delay your care at Evercare Hospital Dhaka  
**PLAN YOUR APPOINTMENT NOW FOR  
SAFE IN-PERSON CANCER TREATMENT!**

We strictly maintain World Health Organization (WHO)  
& GOB healthcare protocols

Thermal screening & hand sanitisers at entry points

Surfaces disinfected frequently

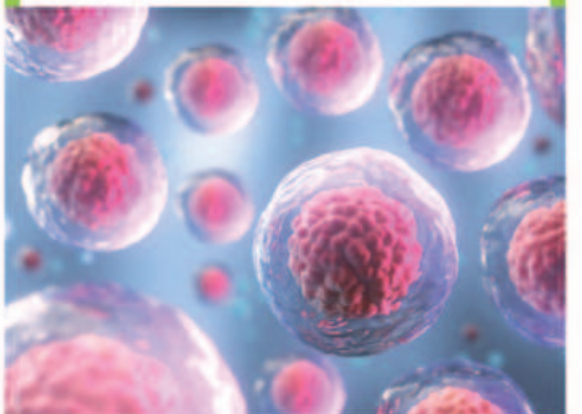


**EVERCARE HOSPITAL DHAKA  
ONLY JCI ACCREDITED  
HOSPITAL IN BANGLADESH**

## Centre of Excellence for Bone Marrow, Blood Diseases & Stem Cell Transplants

### HAEMATOLOGY

Haematology is the branch of medicine that focuses on the diagnosis and treatment of disorders of the blood and bone marrow (blood-forming tissue). Department of Haematology of Evercare Hospital Dhaka provides modern treatment and management for all spectrums of benign and malignant blood-related disorders including autologous bone marrow transplant (BMT). The hospital is equipped with a state-of-the-art Haematology Lab, under the coordination



of our Haematology Consultant, through which we offer comprehensive analysis and interpretation of various haematological tests for appropriate screening, diagnosis and check-up. The Blood Bank uses cutting-edge technology and has the most secure blood transfusion policy, maintaining quality in every aspect, and capable of providing all kinds of blood components 24 hours a day.

### Conditions Treated

The department manages a variety of haematological diseases including:

- Anaemia (acquired): Iron deficiency anaemia, B12 & folate deficiency, haemolytic anaemia, PNH, anaemia due to chronic disease.
- Anaemia (congenital): Thalassemia, anaemia due to different abnormal haemoglobin.
- Bleeding disorders: Haemophilia, any abnormal/prolonged bleeding, von Willebrand disease, ITP, DIC, Factor deficiencies.
- Blood cancers: Leukemia, Lymphoma, Myeloma, MDS
- Bone Marrow Transplant (BMT)
- Immune deficiencies of various kinds.
- Platelet disorders: ITP, Functional platelet diseases

### BONE MARROW TRANSPLANT

With a dedicated BMT unit and a leukaemia unit, Evercare Hospital Dhaka is fully equipped to tackle different kinds of leukaemia using autologous and allogeneic BMT with full match and half match (Haplo). Furthermore, we have a stem cell processing lab; a Cryopreservation facility; an outpatient and inpatient procedure facility; an in-house molecular diagnostic facility that provides fast and accurate diagnosis; BMT beds with central oxygen supply, HEPA Filter and a system for reverse osmosis water purification. We have a molecular lab that uses state-of-the-art technology of Flow Cytometry to diagnose the specific type of cancer. Services like subtyping, FLAER-based PNH, immune-histochemistry and PET-scan are available to make a quick and correct assessment of the patient's condition.

Early diagnosis and planning of BMT procedures are crucial to the treatment of leukaemia. Therefore, top-notch treatment planning tests like MRD and IHC tests are used to monitor the effectiveness of the treatment and adapt for necessary changes.

We have successfully completed our 50th bone marrow transplant in November 2021. With this, we now have a record of conducting the highest number of allogeneic BMTs in the country.