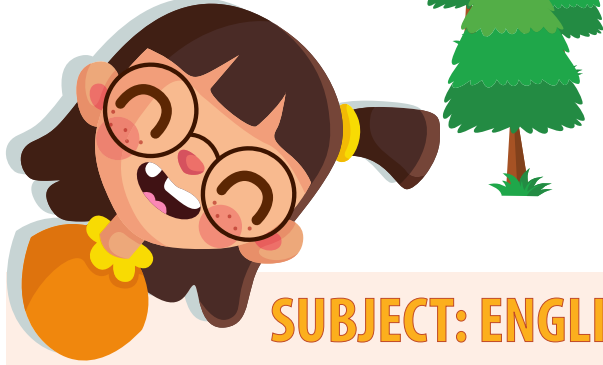


HSC SPECIAL MODEL TEST 2020

Md. Jasim Uddin Biswas, Lecturer, Department of English
Dhaka Residential Model College, Dhaka



SUBJECT: ENGLISH FIRST PAPER

Dear Students,

Today we will practise Multiple Choice Questions and Open-ended questions of question number 1 of Part one of English First Paper. With a view to evaluating your comprehensive aptitude, questions will be provided. 15 (5+10) marks will be allotted for this question. Let's practise.



SEEN PASSAGE

Read the passage and answer the following questions.

One of the sources of water in our country is the rivers. Rivers are everywhere in our life, literature, economy and culture. But are the rivers in good shape? Unfortunately, they are not. A few are already dead and several are going through the pangs of death. The river Buriganga is an example of a dying river. A report published in the Daily Sun describes what has happened to the river Buriganga and why. Its water is polluted and a perpetual stench fills the air around it. But that is not what it was like before.

The report says that the river had a glorious past. Once it was a tributary of the mighty Ganges and flowed into the Bay of Bengal through the river Dhaleshwari. Gradually, it lost its link with the Ganges and got the name Buriganga. The Mughals

marvelled at the tide level of the Buriganga and founded their capital Jahangirnagar on its banks in 1610. The river supplied drinking water and supported trade and commerce. Jahangirnagar was renamed Dhaka which grew into a heavily populated city with a chronic shortage of space.

The city paid back the bounty of the river by sucking life out of it! According to newspaper report, the Buriganga is dying because of pollution. Huge quantities of toxic chemicals and wastes from mills and factories, hospitals and clinics and households and other establishments are dumped into the river everyday. The city of Dhaka discharges about 4500 tons of solid waste everyday and most of it is directly released into the Buriganga. According to the Department of Environment

(DoE), 20,000 tons of tannery waste, including some highly toxic materials, are released into the river everyday. Experts identified nine industrial areas in and around the capital city as the primary sources of river pollution: Tongi, Tejgaon, Hazaribagh, Tarabo, Narayanganj, Savar, Gazipur, Dhaka Export Processing Zone and Ghorashal.

The river would need a monster's stomach to digest all the wastes mentioned above. There is a limit up to which it can put up with its cruel and thoughtless treatment. We the humans have successfully killed one of our rivers. There are other rivers in the country that are being subjected to similar thoughtless treatment. Unless we take care of our rivers, there may come a time when we will cry 'water, water' and find it nowhere.

1. A. Choose the correct answer from the alternatives.

1×5=5

(a) The best way to save the river is ____.

- (i) introducing strict law
- (ii) involving all concerned people
- (iii) punishing polluters
- (iv) cleaning the river

(b) Dhaka grew into a ____ populated city with a short space.

- (i) thinly
- (ii) densely
- (iii) widely
- (iv) openly

(c) What was renamed?

- (i) Dhaka
- (ii) the Buriganga
- (iii) Jahangirnagar
- (iv) the Ganges

(d) A huge quantity of toxic chemicals and wastes are ____.

- (i) thrown in the river everyday
- (ii) produced from the river everyday
- (iii) made from river water everyday
- (iv) sold in the market everyday

(e) What would need a monster's stomach to digest all the wastes?

- (i) Dhaka city
- (ii) the capital of Dhaka
- (iii) the capital of Jahangirnagar
- (iv) the Buriganga



2×5=10

B. Answer the following questions.

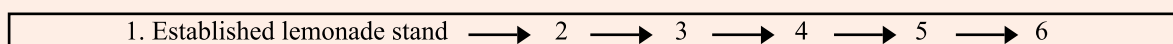
- (a) What should we do to bring back the glorious past of the rivers?
- (b) According to the passage, what happened in the year 1610?
- (c) What, according to the experts, are the primary sources of river pollution in and around Dhaka city?
- (d) What amount of solid waste is produced in Dhaka city and where does it go?
- (e) Why should the river need a monster's stomach?

2. Read the following text and make a flow chart showing the things Alex and her foundation have done for the children with cancer. (One is done for you.) 2×5=10

Alexandra 'Alex' Scott was born in Connecticut in 1996, and was diagnosed with neuroblastoma, a type of childhood cancer, shortly before she turned one. In 2000, just after turning four, she informed her mother that she wanted to start a lemonade stand to raise money for doctors to help

children. Her first lemonade stand raised 2,000 dollars and led to the creation of the Alex's Lemonade Stand Foundation. Alex continued her lemonade stands throughout her life, ultimately raising over one million dollars toward cancer research. She passed away in August 2004 at the age of eight.

Today, Alex's Lemonade Stand sponsors a national fundraising weekend in the United States which is popularly known as Lemonade Days. Each year, as many as 10,000 volunteers at more than 2,000 Alex's Lemonade Stands make a difference for children with cancer.



Dear Students,

Today we will practise gap filling activities with clues of question number 4 of English First Paper. With a view to evaluating your aptitude in using appropriate words, a text having 10 gaps will be provided. 5 marks will be allotted for this question. Let's practise.

Read the following text and fill in the blanks with suitable word from the box. There are more words than needed. Make any grammatical change if necessary.

3

universe	character	organize	identify	economy	grow	biology
mark	communicate	early	critic	develop	define	determinant

World Health Organization (WHO) (a) ____ adolescence as the period in human growth and (b) ____ that occurs after childhood and before adulthood. This phase represents one of the critical transitions in one's lifespan and is (c) ____ by fast paced growth and change which are second only to those at infancy. Biological processes drive many aspects of this growth and development with the onset of puberty (d) ____ the passage from childhood to adolescence. The biological (e) ____ of adolescence are fairly (f) ____; however, the duration and (g) ____ characteristics of this period may vary across time, cultures and socio (h) ____ situations. This period has seen many changes over the past century—puberty for example, comes (i) ____ than before, people marry late and their sexual attitudes and behaviour are different from their grandparents, or even parents. Among the factors responsible for the change are education, urbanization and spread of global (j) ____.

4

riverine	natural	region	people	different	metaphors
inequality	material	eastern	great	composed	music

In Bangladesh, folk music has (a) ____ variety, with songs being (b) ____ on the culture, festivals, views of life, natural beauty, rivers and rural and riverine life. These songs are also about social (c) ____ and poverty, about the (d) ____ world and the supernatural. Mystical songs have been composed using the metaphors of rivers and boats. Since the country is basically (e) ____ the Bhatiyali forms an important genre of folk music. Folk music is formed and developed according to the environment. Differences in the (f) ____ environment are reflected in the (g) ____ of the (h) ____ regions. The dialects too vary across the different regions. Bangladeshi folk music, therefore, varies from (i) ____ to region. Thus there are the northern Bhawaiya, the (j) ____ Bhatiyali and the southwestern Baul songs.

ANSWERS

Answer to the question number 1(A):

- (a) = (ii) involving all concerned people
- (b) = (ii) densely
- (c) = (iii) Jahangirnagar
- (d) = (i) thrown in the river everyday
- (e) = (iv) the Buriganga

Answer to the question number 1(B):

(a) In order to bring back the glorious past of the rivers, we must refrain from throwing waste into the rivers. Throwing huge amounts of waste into rivers hinders and stops their strong flow, of course leading to their gradual death.

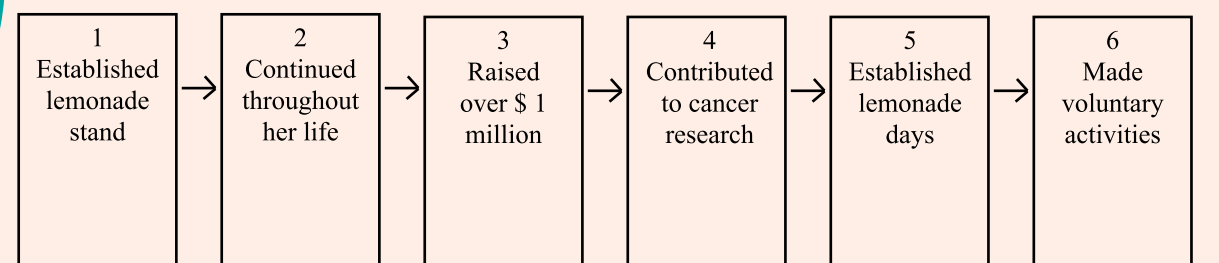
(b) In 1610, the Mughals were highly delighted at the tide level of the Buriganga and so founded their capital Jahangirnagar on its bank.

(c) According to the experts, the primary sources of river pollution in and around Dhaka city are nine industrial areas namely Tongi, Tejgaon, Hazaribagh, Tarabo, Narayanganj, Savar, Gazipur, Dhaka Export Processing Zone and Ghorashal. Everyday huge quantities of toxic chemicals and wastes from these sources are released into the river Buriganga.

(d) About 4500 tons of solid waste is produced in Dhaka city everyday and the major part of it goes straight into the river Buriganga.

(e) About 4500 tons of solid wastes and 20,000 tons of tannery wastes are released in the Buriganga everyday. To digest this huge quantity of wastes, the river needs a monster's stomach.

Answer to the question number 2:



Answer to the question number 3:

- (a) identifies; (b) development; (c) characterised; (d) marking; (e) determinants; (j) universal; (g) defining; (h) economic; (i) earlier; (j) communication.

Answer to the question number 4:

- (a) great; (b) composed; (c) inequality; (d) material; (e) riverine; (f) natural; (g) people; (h) different; (i) region; (j) eastern.

