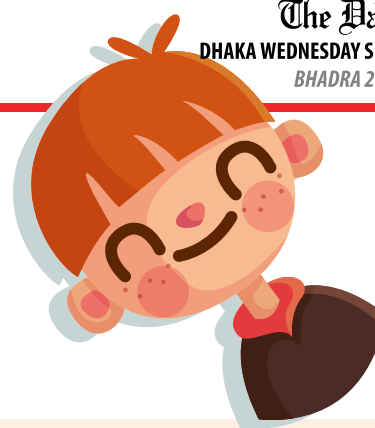




HSC SPECIAL MODEL TEST 2020

Md. Jasim Uddin Biswas, Lecturer, Department of English
Dhaka Residential Model College, Dhaka



SUBJECT: ENGLISH FIRST PAPER

SEEN PASSAGE



Read the passage and answer the following questions.

Shilpi was only 15 years old when she married Rashid in 2008. Marrying off daughters at an early age is a standard practice for many families living in rural Bangladesh. After her wedding, Shilpi joined a local empowerment group that provides adolescent girls with the tools needed to gradually change cultural practices, particularly those pertaining to early marriage and pregnancy. The group's activities include discussions on how to most effectively change behaviour related to reproductive health as well as one-on-one counselling. It also offers peer-to-peer support and life skills training that helps adolescents say 'no' to early marriage. The empowerment

group is one of more than 10,000 groups supported by some local Non-Government Organizations (NGOs) working all over Bangladesh. These NGOs work through Canada's Adolescent Reproductive Health Project which also aims to increase access to quality health services for adolescents. During one of the group sessions, Shilpi came to understand the potentially harmful effects of early marriage and pregnancy.

While maternal mortality in Bangladesh has declined by nearly 40 per cent since 2001, the rate remains high with 194 maternal deaths per 100,000, live births in 2010-dropping from 322 in 2001 with a projected decrease to 143

by 2015. Girls who get pregnant are at risk of serious health complications. These include dangerous haemorrhage and fistula, a painful internal injury caused by obstructed childbirth that commonly leads to serious maternal morbidities and social exclusion. When Shilpi heard about those risks, she invited her husband, Rashid, to discuss pregnancy with a counsellor. After hearing about the risks, Rashid agreed to delay having children for five years despite pressures from his parents and neighbours to produce an offspring. Together, the couple met a female health care provider, who informed them about the various family planning options available.

1. A. Choose the correct answer from the alternatives.

1×5=5

- (a) According to the text, what is the synonym of 'standard'?
- (i) relevant (ii) regular
(iii) sophisticated (iv) rare
- (b) In Bangladesh, many people have a tendency to marry their daughter off ____.
- (i) when they are adult (ii) prematurely
(iii) timely (iv) when they reach maturity
- (c) The best synonym of 'declined' is ____.
- (i) reduced (ii) divided
(iii) defeated (iv) washed-up
- (d) Girls who get pregnant are ____.
- (i) free from any risk (ii) intelligent
(iii) fortunate enough (iv) at risk of serious health complications
- (e) What is the passage about?
- (i) the life cycle of Shilpi
(ii) the conjugal life of Shilpi
(iii) the harmful effects of early marriage and pregnancy
(iv) the empowerment of rural women



B. Answer the following questions.

2×5=10

- (a) Why is female child marriage so common in rural Bangladesh?
- (b) Why was Shilpi married off at an early age?
- (c) Marrying off daughters at an early age is a standard practice of many families in rural Bangladesh. Do you support it? Why/Why not?
- (d) Describe the end results of early pregnancy?
- (e) When and to whom was Shilpi married off? Was Shilpi's marriage early?

2. Read the following text and make a flow chart showing the different organizations or societies in the process of peace movement in the world and their activities. (One is done for you.)

2×5=10

The first peace movement appeared in 1815-1816. The first such movement in the United States was the New York Peace Society, founded in 1815 by the theologian David Low Dodge, and the Massachusetts Peace Society. It became an active organization, holding regular weekly meetings, and producing literature which was spread as far as Gibraltar and Malta, describing the horrors of war and advocating pacifism on Christian grounds. The London Peace Society (also known as the Society for the Promotion of Permanent and Universal Peace)

was formed in 1816 to promote permanent and universal peace by the philanthropist William Allen. In the 1840s, British women formed 'Olive Leaf Circles' groups of around 15 to 20 women, to discuss and promote pacifist ideas. The peace movement began to grow in influence by the mid-nineteenth century. The London Peace Society, under the initiative of American consul to Birmingham, Elihu Burritt, and the Reverend Henry Richard, convened the first International Peace Congress in London in 1843. The congress decided on

two aims: the ideal of peaceable arbitration in the affairs of nations and the creation of an international institution to achieve that.

Afterwards, peace organizations were set up in many countries. The United Nations was founded with the primary objectives to maintain peace and resolve inter-state conflicts in the world. Many treaties have been signed between many nations, a noteworthy one of which is the nuclear nonproliferation treaty. Everyone wants peace and likes the principles of non-violence.

1. New York Peace Society founded in 1815 → 2 → 3 → 4 → 5 → 6

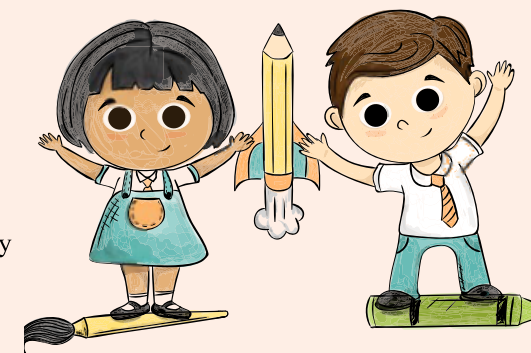
4. Identify the unclear pronoun references in the following paragraph. Where necessary, rewrite the sentences so that all pronoun references are clear. 1×5=5

At the Writing Centre, you can receive help on any writing assignment. It can make your writing stronger by discussing it with someone else. This will lead to a greater understanding of the proper mechanics and style expected in academic writing. This is an important part of the writing process, and they spend a good deal of time making sure you understand the expectations of written assignments. Using it will definitely make your writing skills stronger, and that will give you greater confidence for your next assignment.

ANSWERS

Answer to the question number 1(A):

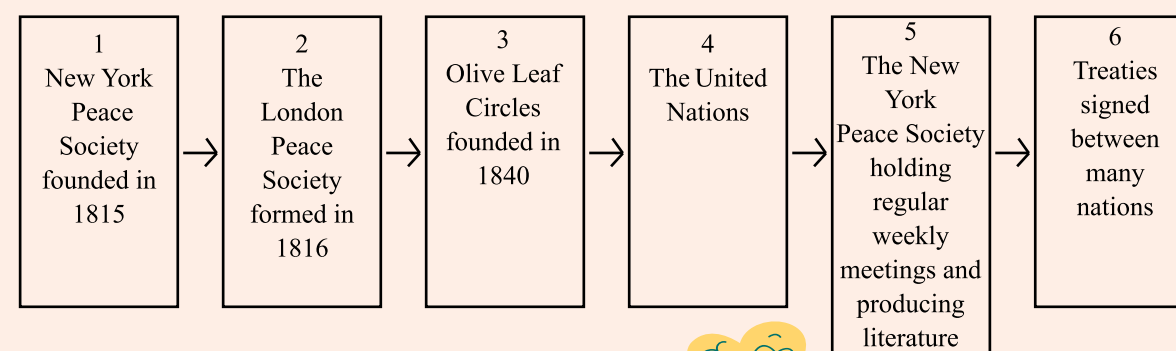
- (a) ⇒ (ii) regular
(b) ⇒ (ii) prematurely
(c) ⇒ (i) reduced
(d) ⇒ (iv) at risk of serious health complications
(e) ⇒ (iii) the harmful effects of early marriage and pregnancy



Answer to the question number 1(B):

- (a) There are mainly two reasons for female child marriage becoming so common in rural Bangladesh. Firstly, most people are poor. And due to poverty, they cannot afford their daughters' education. And secondly, due to lack of education, they are mostly ignorant of the negative sides of early marriage.
- (b) Shilpi was married off at an early age because she was a member of a traditional family living in rural Bangladesh where marrying off daughters at an early age is a standard practice.
- (c) No, I don't support it. Because marrying off daughters at an early age makes them suffer from various health complications, which may result in death. These complications include dangerous haemorrhage and fistula, a painful internal injury caused by obstructed childbirth that commonly leads to serious maternal morbidities and social exclusion.
- (d) Early pregnancy may cause dangerous haemorrhage and fistula, a painful internal injury caused by obstructed childbirth that commonly leads to serious maternal morbidities and social exclusion.
- (e) Shilpi was married off to Rashid when she was only 15 years old. She was married early in the sense that it is not permissible to get a girl married off at the age of 15.

Answer to the question number 2:



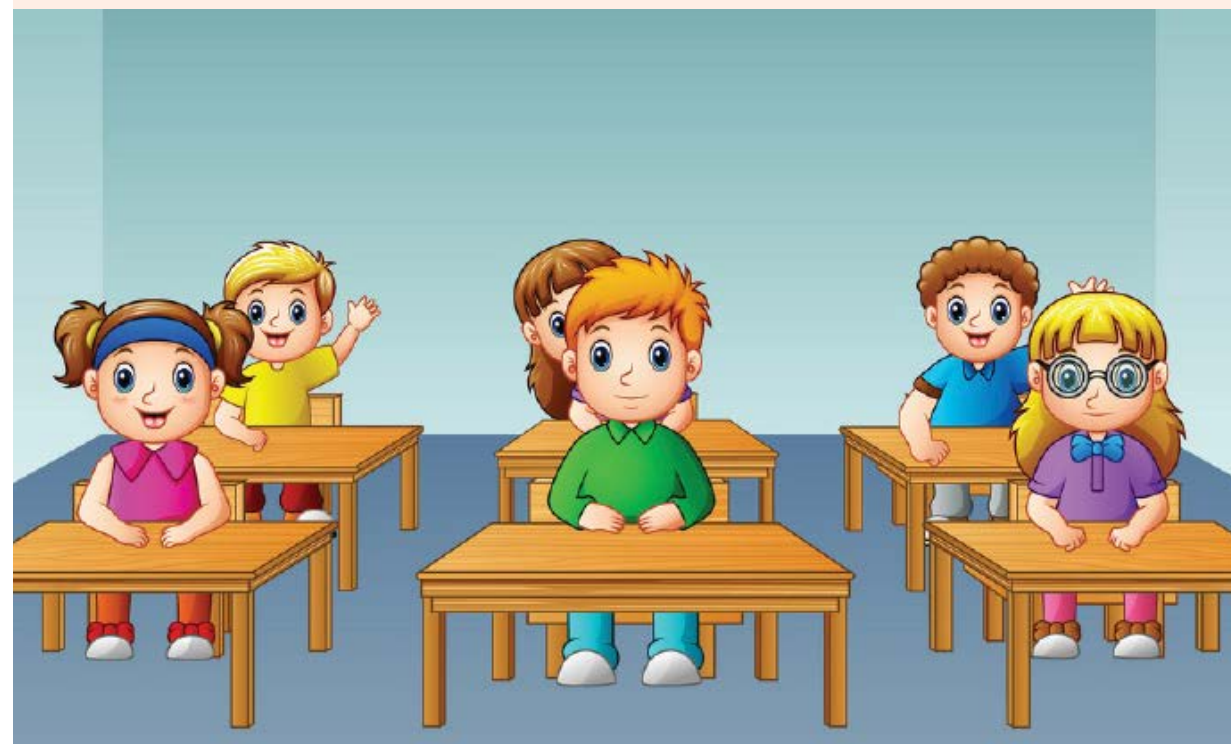
Answer to the question number 3:

- (a) In fact, very few curses are as big as it is.
(b) It is unfortunate that this has been accepted in our society.
(c) In a family of five or six children, the parents have to send some of their kids to work to fill their empty stomachs.
(d) These poor children have to work hard all day long but in return, they are rewarded with all kinds of abuses.
(e) The government should stop child labour.



Answer to the question number 4:

At the Writing Centre, you can receive help on any writing assignment. You can make your writing stronger by discussing the assignment with someone else. The discussion will lead to a greater understanding of the proper mechanics and style expected in academic writing. This is an important part of the writing process, and the tutors spend a good deal of time making sure you understand the expectations of written assignments. Using the process will definitely make your writing skills stronger and that will give you greater confidence for your next assignment.



EXCLUSIVE MODEL TEST 2020 ON ENGLISH SECOND PAPER

Part A: Grammar

3. Read the text and change the sentences as directed.

1×5=5

Child labour is a great problem in our country. (a) In fact, it is one of the biggest curses. (Make it positive). It is a violation of human rights. (b) Unfortunately, this has been accepted in our society. (Make it complex) (c) In a family of five or six children, the parents have to send some of their kids to work so that they can fill their empty stomachs. (Make it simple) (d) Though these poor children have to work hard all day long, in return they are rewarded with all kinds of abuses. (Make it compound) (e) Child labour should be stopped. (Make it active)