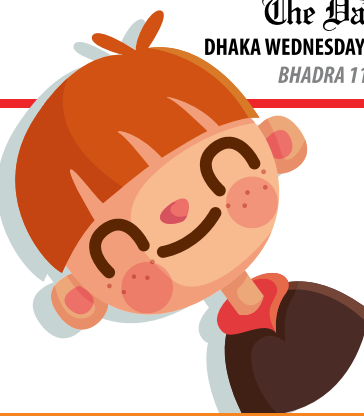




## HSC SPECIAL MODEL TEST 2020

### SUBJECT: ENGLISH FIRST PAPER

Md. Jasim Uddin Biswas, Lecturer, Department of English, Dhaka Residential Model College, Dhaka



### SEEN PASSAGE



#### Read the passage and answer the following questions.

Adolescents constitute a nation's core resource for national renewal and growth. Adolescence is a period in life when transition from childhood to adulthood takes place and behaviours and lifestyles are shaped. According to the World Health Organisation (WHO), adolescence is the period which shapes the future of girls' and boys' lives. There are 28 million adolescents in Bangladesh; 13.7 million of them are girls and 14.3 million boys.

The situation of adolescent girls in Bangladesh is characterised by inequality and subordination within the family and society. This inequality leads to widespread practice of child marriage,

marginalisation or exclusion from health, education and economic opportunities, and vulnerability to violence and sexual abuse.

In Bangladesh, the legal age of marriage is 18 for girls and 21 for boys. However, 33 per cent of adolescent girls are married before the age of 15 and 60 per cent become mothers by the age of 19. Research finds that adolescents with higher level of education and from more affluent families tend to marry at a later age. Boys, however, become ready for marriage only after several years of adolescence and young adulthood.

When a girl gets married, she usually drops out of school and

begins full-time work in her in-laws' household. In the in-laws' house, she is marginalized. She becomes vulnerable to all forms of abuse, including dowry-related violence. In Bangladesh, it is still common for a bride's family to pay dowry, despite the practice being illegal. Dowry demands can also continue after the wedding. For an adolescent bride, even if her in-laws are supportive, there are greater health risks in terms of pregnancy and childbirth. The majority of adolescent brides and their families are uninformed or insufficiently informed about reproductive health and contraception. The maternal mortality rate for adolescents is double the national rate.

#### 1. A. Choose the correct answer from the alternatives.

1×5=5

##### (a) What could be the closest meaning of the word 'core' in the first sentence?

- (i) alternative
- (ii) subsidiary
- (iii) central
- (iv) minor

##### (b) The phrase 'leads to' in the passage refers to \_\_\_\_.

- (i) results of
- (ii) results in
- (iii) results from
- (iv) results to

##### (c) Adolescence is a \_\_\_\_ period from childhood to adulthood.

- (i) constant
- (ii) transitional
- (iii) rigid
- (iv) fixed

##### (d) The synonym of 'legal' is \_\_\_\_.

- (i) illicit
- (ii) banned
- (iii) prohibited
- (iv) lawful

##### (e) The word 'economic' can be replaced by \_\_\_\_.

- (i) monetary
- (ii) economical
- (iii) cheap
- (iv) financed

#### B. Answer the following questions.

2×5=10

- (a) How can you define adolescence?
- (b) Why are the adolescents important?
- (c) What is the condition of adolescent girls in Bangladesh?
- (d) What are the consequences of gender inequality in Bangladesh?
- (e) Which factors influence a girl's marriage?



#### 2. Read the following text and make a flow chart showing what happened in Chawla's life after her joining NASA. (One is done for you)

2×5=10

Chawla was born in Karnal, India. She completed her earlier schooling at Tagore Baal Niketan Senior Secondary School, Karnal. She is the first Indian-born woman and the second person in space from this subcontinent. After graduating in Aeronautical Engineering from Punjab Engineering College, India, in 1982, Chawla moved to the United States the same year. She obtained her Master's degree in Aerospace Engineering from

the University of Texas in 1984. Later she did a PhD in Aerospace Engineering in 1988 from the University of Colorado.

Determined to become an astronaut, even in the face of the Challenger disaster in 1986 that broke apart 73 seconds into its flight, leading to the deaths of its seven crew members, Chawla joined NASA in 1988. She began working as a Vice President where she did Computational

Fluid Dynamics (CFD) research on vertical take-off and landing. In 1991, she got U.S. citizenship and started her career as a NASA astronaut in 1995. She was selected for her first flight in 1996. She spoke the following words while travelling in the weightlessness of space, "You are just your intelligence." She had travelled 10.67 million miles, as many as 252 times around the Earth.

1. Joining NASA in 1988 → 2 → 3 → 4 → 5 → 6



### EXCLUSIVE MODEL TEST 2020 ON ENGLISH SECOND PAPER

#### 3. Complete the sentences with suitable phrases/words given in the box.

.5×10=5

would rather	as if	as soon as	has to	had better
there	what's it like	it	what if	let alone

- (a) To be successful, one \_\_\_\_ be disciplined. For, without maintaining a disciplined life, none can succeed in life.
- (b) He cannot express his ideas in Bangla, \_\_\_\_ in English. He is not studious at all.
- (c) I \_\_\_\_ lead a simple life than earn a lot of money illegally and lead an aristocratic life. I always hate corruption and the corrupt.
- (d) While taking exam, students should check if they have attempted all the questions \_\_\_\_ they finish writings. But unfortunately, some students do not do it.
- (e) Today it is drizzling. So, \_\_\_\_ taking kedgeree at lunch?
- (f) Ratan is meritorious but poor. He \_\_\_\_ do private tuition in the afternoon to afford his educational expenses.
- (g) Touhid is a good singer. We have invited him only to our cultural function, \_\_\_\_ he misses?
- (h) My friend always talks \_\_\_\_ he knew everything. Actually, he is not a learned man.
- (i) \_\_\_\_ is unfortunate that many students spoil most of their time by using Facebook.
- (j) Now we get information within seconds. Cell phones are doing this miraculous thing. But \_\_\_\_ was a time when we had to wait days after days for a letter to come and bring the news about our near and dear ones.

#### 4. Read the text and fill in the gaps with the correct form of verbs as per subject and context.

.5×10=5

One very conspicuous change in our society (a) \_\_\_\_ (be) the presence of working women outside the home. Of course, it (b) \_\_\_\_ (acknowledge) that women have always (c) \_\_\_\_ (work) within the household but this commonly (d) \_\_\_\_ (count) as 'work'. Even their role in agricultural societies (e) \_\_\_\_ (recognize) either. From the urge (f) \_\_\_\_ (establish) their own identity, many of them are now (g) \_\_\_\_ (enter) the outside workforce. They (h) \_\_\_\_ (join) a wide range of professions. Moreover, it is not only educated women who (i) \_\_\_\_ (opt) to work but women with little or no education (j) \_\_\_\_ (come) out of their cocoons to become self-reliant.

#### 5. Change the narrative style by using indirect speeches.

5

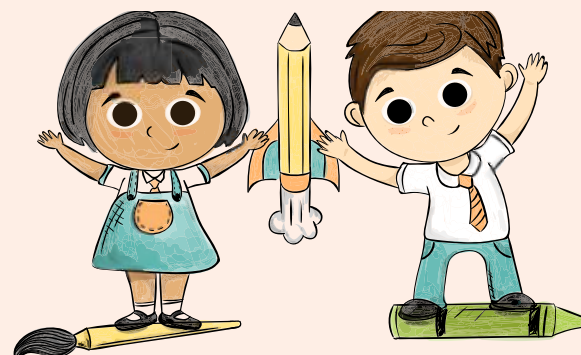
"Follow my example," she said when we shook hands, "and never eat more than one thing for luncheon." "I'll do better than that," I retorted, "I'll eat nothing for dinner tonight." "Humourist!" she cried gaily, jumping into a cab.

## A N S W E R S

### English First Paper

#### Answer to the question number 1 (A):

- (a) = (iii) central
- (b) = (ii) results in
- (c) = (ii) transitional
- (d) = (iv) lawful
- (e) = (i) monetary.



#### Answer to the question number 1 (B):

- (a) Adolescence is a period in life when transition from childhood to adulthood takes place and behaviours and lifestyles are shaped.
- (b) Adolescents are important because they make up a nation's key resource for its development and growth.
- (c) The condition of adolescent girls in Bangladesh is very

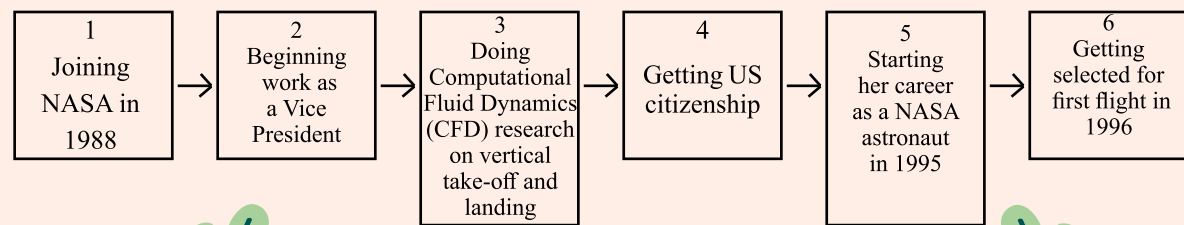
miserable. They are victims of inequality and subordination within the family and society. This inequality results in widespread practice of child marriage, marginalization or exclusion from health, education and economic opportunities and vulnerability to violence and sexual abuse.

(d) The consequences of gender inequality in Bangladesh are very serious. Girls of Bangladesh are

victims of gender inequality. This inequality results in widespread practice of child marriage, marginalization or exclusion from health, education and economic opportunities and vulnerability to violence and sexual abuse.

(e) Wealth and education greatly influence a girl's marriage. A girl with higher level of education and from a wealthy family tends to marry at a later age.

#### Answer to the question number 2:



### English Second Paper

#### Answer to the question number 3:

- (a) has to; (b) let alone; (c) would rather; (d) as soon as; (e) what's it like; (f) had better;
- (g) What if; (h) as if; (i) It; (j) there.

#### Answer to the question number 4:

- (a) is; (b) has to be acknowledged; (c) worked; (d) is not counted; (e) has not been recognized; (f) to establish;
- (g) entering; (h) are joining; (i) are opting; (j) have come/are coming.

#### Answer to the question number 5:

When we shook hands she advised me to follow her example and never eat more than one thing for luncheon. I retorted that I would do better than that. I added that I would eat nothing for dinner that night. Jumping into a cab, she cried out gaily saying that I was a humorist.