



**STYLE CHECK**

# KORNIA

*What is your style mantra?*

I always wear clothes that I believe look good on me.

*Who is your favourite star icon in Bangladesh and in Hollywood?*

Bibi Russell is one my favourite star icons in Bangladesh as I find her designs very unique. In Hollywood, however, I don't have any favourites.

*Who is your favourite fashion designer?*

I don't have any favourite fashion designer, but I do have a few go-to brands for my accessories and cosmetics. One of my most preferred brands for bags is *Burberry*. When it comes to cosmetics, *MAC*, *NYX*, *Huda Beauty* and *Fenty Beauty* are a few of my favourites. I also love the perfume range of *DKNY*, *Prada* and *Issey Miyake*.

*What is your regular everyday wear like?*

T-shirt paired with jeans.

*What is your general party wear like?*

My party wear varies from gowns to

*sarees* and *salwar kameez*, depending on the occasion.

*What are your favourite accessories?*

I love all kinds of accessories including sunglasses, perfumes, shoes, bags and watches.

*What is a must have in your wardrobe?*

I have a lot of black clothes in my wardrobe.

*What fashion trend do you dislike?*

I don't dislike any fashion trend, as long as it suits the person following it.

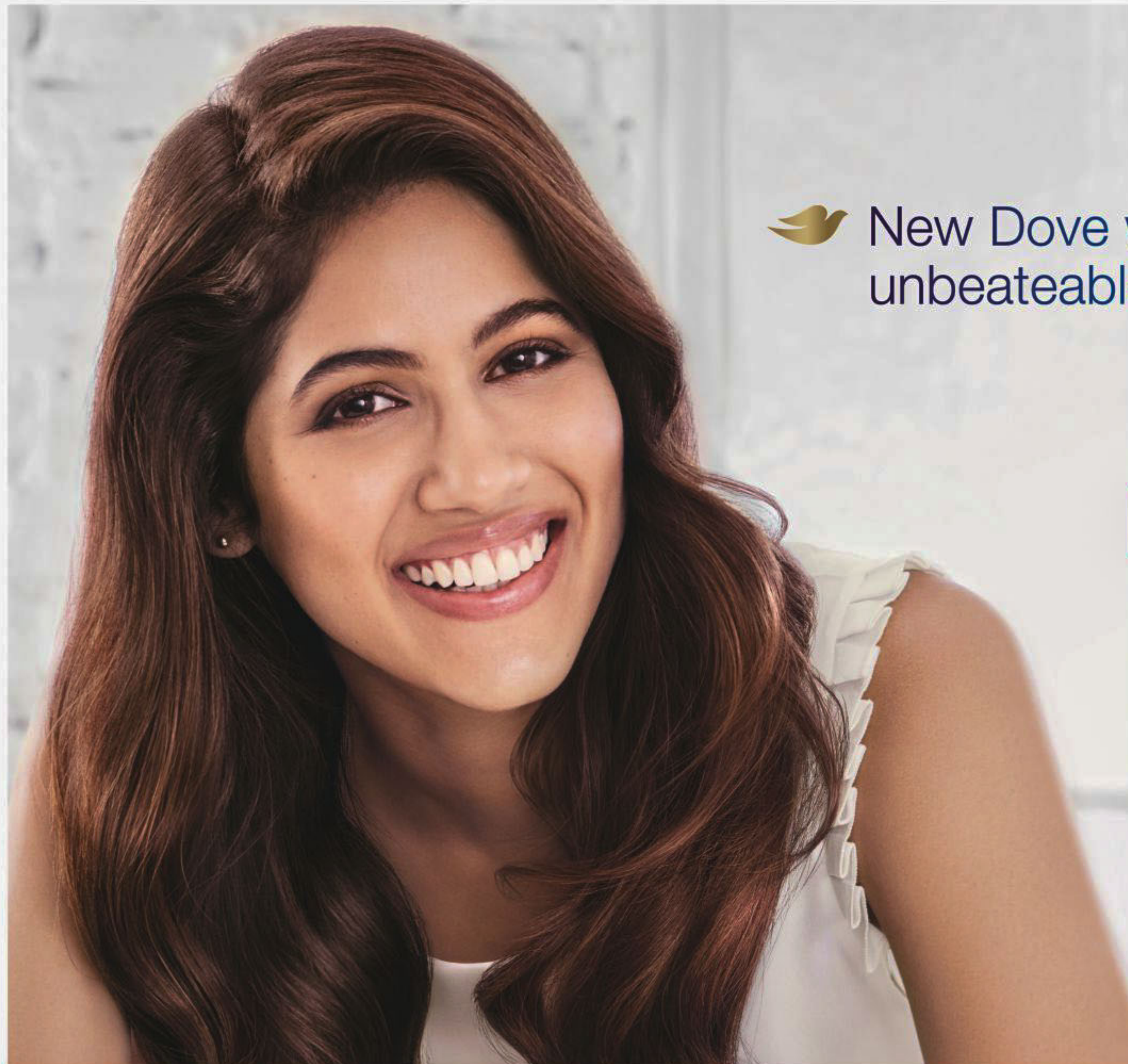
*What fashion trend would you say is your favourite?*


I would have to say wearing watches is my favourite.

*What would be a fashion message you would give to the readers?*

When it comes to fashion trends, it's important to stay true to yourself, rather than following others and losing your own sense of identity.

.....  
Shreya Shomoyeeta



 New Dove with unbeatable damage repair\*.

*Dove*  
NUTRITIVE SOLUTIONS

**NEW**



  
no digital distortion

\*Damage repair refers to signs of surface damage. Based on lab test on hair breakage and smoothness evaluation on Dove system vs shampoo and conditioner brands having at least 3% Volume Market Share (source: Nielsen FY 2018).

\*New refers to New pack

New pack and formulation