

STYLE CHECK

Puja Cherry

Puja Cherry has made a name for herself in the showbiz industry, both as an actor and a model. She has been praised for her acting in various films like 'Poramon 2'. In a recent interview with Star Showbiz, she shared her views on fashion.

What is your style mantra?

I dress according to the type of event I'm attending. I generally prefer wearing clothes that are comfortable.

Who is your favourite style icon?

My favourites are definitely Deepika Padukone and Alia Bhatt.

Who is your favourite fashion designer?

I am very close to Sandy, who is a fashion designer in Kolkata. I go to him whenever I need a new dress. He even designed the dress I wore to the 21st Meril Prothom Alo Awards ceremony that took place recently. In Bangladesh, however, I don't have a favourite designer, and usually wear clothes that I like.

What is your regular everyday wear like?

For casual look, I usually opt for a t-shirt paired with jeans.

What is your general party wear like?

I like wearing long gowns with intricate designs whenever I attend parties.

What are your favourite accessories?

My favourite accessory is ear rings.

What is a must have in your wardrobe?

I always try to pair necklaces, ear rings or nose pins with my outfits. I would say these are a few must-haves in my wardrobe.

What fashion trend do you dislike?

I have tried, and enjoyed experimenting with the recent fashion trends, and I haven't disliked any of them yet.

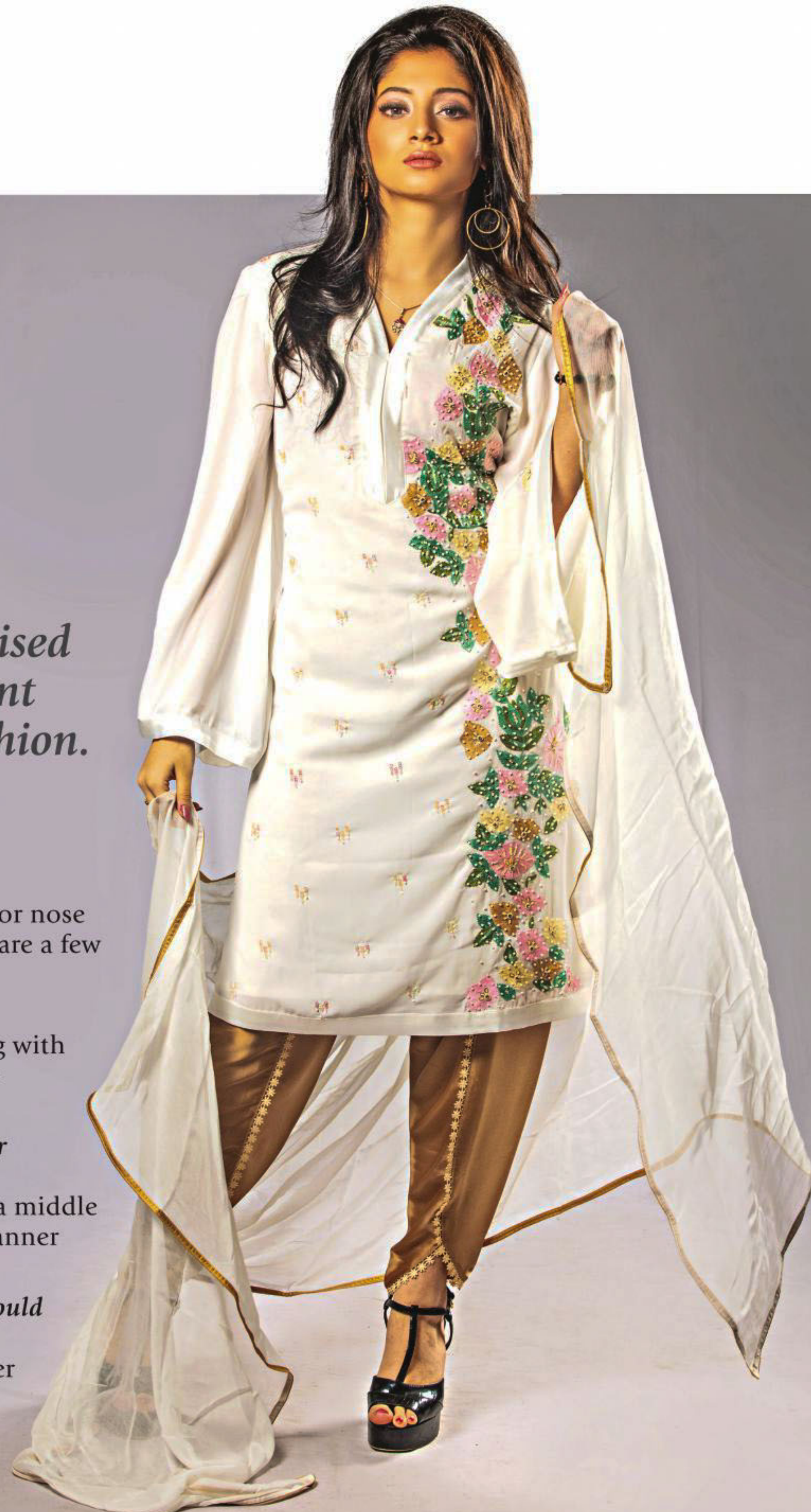
What fashion trend would you say is your favourite?

I like the trend of sleek hairstyles with a middle part, and try to wear my hair in that manner on most occasions.

What would be a fashion message you would like to give to the readers?

I would ask the readers to wear whatever makes them feel comfortable.

By Shreya Shomoyeeta



Reverse up to
100% of hair damage
from pollution*

With New Dove Environmental Defence

Dove
NUTRITIVE
SOLUTIONS



*Based on lab test with Dove Environmental Defence shampoo and conditioner vs non-conditioning shampoo.