



Only a few hundred of the critically endangered Baer's Pochard is left in the world. This migratory duck visits our freshwater wetlands of northeast Bangladesh, especially Tanguar and Hakaluki Haor.



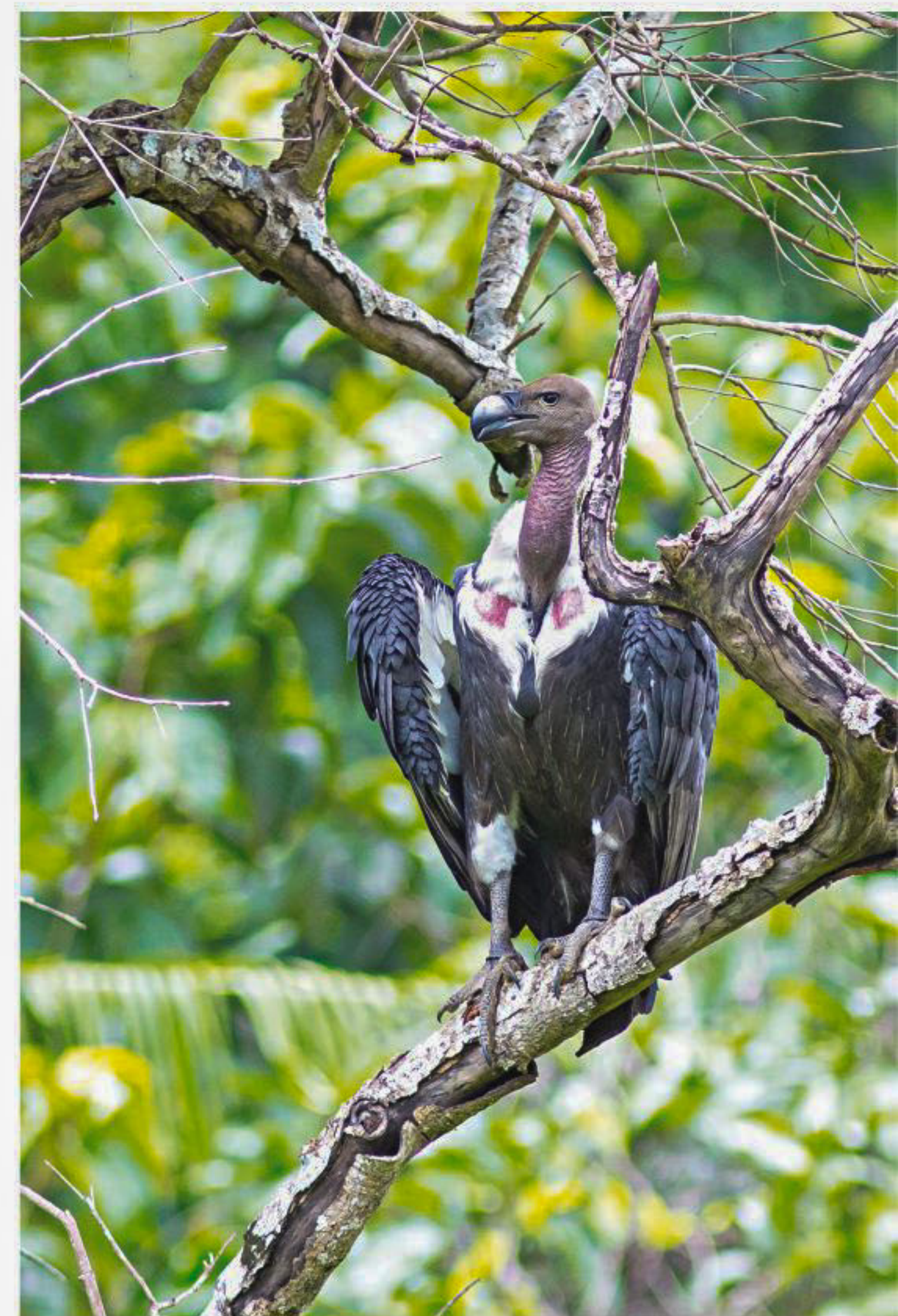
The endangered Steppe Eagle mainly occurs in riverine habitats along Padma and Jamuna rivers in winter.



Hill forests of Sylhet and Chittagong divisions still echo with Western Hoolock Gibbon's fascinating calls. It is also listed as globally endangered.



Pallas's Fish Eagle comes to the Haor basins of Bangladesh to breed in winter. This raptor is largely dependent on healthy freshwater wetland ecosystems.



The critically endangered White-rumped Vulture used to occur almost everywhere in Bangladesh, but it is now only confined to northeaster forests and the Sundarbans.