

TV SHOW REVIEW

Here's my "Thank You" to Gravity Falls

ARAF MOMEN AKA

Out of all the generic animated shows we have become accustomed to throughout the course of the past few years, *Gravity Falls* is something that we viewers would love to call a breath of fresh air.

Gravity Falls is an animated TV show that originally aired on the Disney Channel. It spanned over two seasons and has one of the most satisfactory endings my eyes have ever been blessed with.

The main protagonists, Mabel and Dipper Pines, are non-identical twins of complete opposite characteristics. Mabel is an overly-optimistic girl who loves everything unicorns and rainbows. On the other hand, Dipper is a wannabe intellectual who loves to explore the unknown and make some sense out of everything weird going on around them, but in vain.

The duo is sent to stay with their great-uncle Stanley 'Stan' Pines, nicknamed Grunkle Stan, in an enigmatic town called Gravity Falls, Oregon for the summer. They stay in Grunkle Stan's tourist trap. The duo faces adventures that are fuelled by Dipper's curiosity ever since he discovers the mysterious journal from a tree in the woods of Gravity Falls.

Sounds like any other story-less



Phineas and Ferb rip-off, right? Wrong. The entire show is definitely something to watch. Li'l Gideon and Bill Cipher are the most interesting antagonists I've ever seen. Bill Cipher's cool maleficence, Li'l Gideon's deceptive nature and obsession towards Mabel, all other monsters and other-worldly creatures that the duo and their friends face inside Gravity Falls are not to be forgotten.

The best part of the show is the sibling interactions between Mabel and Dipper.

The childhood innocence and the maturity they achieve when they are together make the duo a treat to follow. Grunkle Stan is the least likely responsible guardian, but he still manages to keep things together despite being a deceitful con artist within the town of Gravity Falls.

Grunkle Stan really loves his great-nephew and niece, yet hates to show it. He loves being himself, despises interactions with others, and loves

money. He is the kind of person who vehemently believes in "tough love". He is the perfect embodiment of a softie under a tough nut.

There are several twists in the show. If I were to give any hints, they would be spoiled very badly.

The vivid colours in the cartoon's artwork, the uncannily attractive sense of positivity, the well-written characters and masterful portrayal of all the characters (protagonists, antagonists, side-characters, all of them), the cutesy humour, everything about this cartoon was something I thoroughly enjoyed watching non-stop.

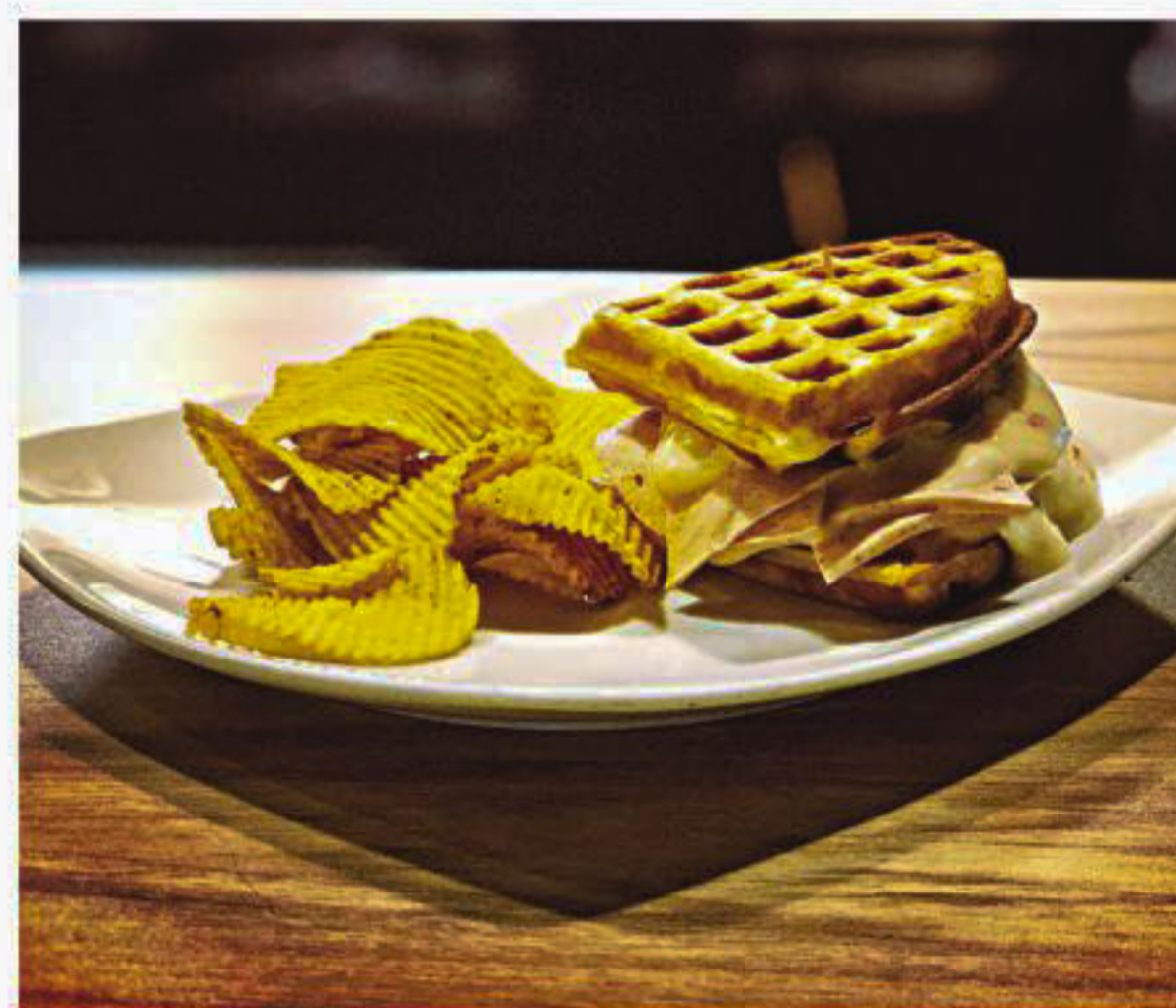
Gravity Falls is a show that anyone can enjoy. The upbeat colourful and cheerful tone goes well for the younger audience and the sombre story of the plot is captivating enough for the older audience.

Alex Hirsch, the genius behind *Gravity Falls*, has created a masterpiece. This show made my eyes tear up and twinkle in wonder, sorrow, and joy respectively. This was some experience I'll never forget and would recommend to every body.

Aka is a tiny bleep on the world's radar, and he finds peace in knowing it. Ruin his peace by poking him on akaaraf@hotmail.com

HANGOUTS

L'Espresso: Taking coffee to a new level



MOHUA MOULI

A couple of weeks ago, I dropped by at L'Espresso at Banani, to taste some of their signature items and to have a chat with one of the owners, Nafiz Iqbal. The owners, out of their love for coffee, decided to channel their obsession into creating a warm, cosy space for the true coffee lovers of Dhaka.

As I climbed its narrow wooden staircase, I could already smell the delicious aroma of coffee coming towards me like a warm, sweet breeze. The place was smaller than I expected, which I didn't mind because it made for a cosier atmosphere. The walls were painted a lovely turquoise, with square glass windows on one side, letting in the fresh

sunshine through vines hanging over the windows.

I was soon greeted by Nafiz and as we sat down to chat, he ordered a cup of coffee and savoury waffles for me. While the coffee brewed and the waffles were being prepared, we discussed how he went from studying abroad to becoming a coffee shop owner in Dhaka.

Nafiz told us about how living abroad allowed him to receive an authentic coffee experience. "When I came back to Bangladesh, I saw a lot of coffee shops but hardly any of them stood out to me. I wanted to create something unique," he added.

Starting its journey as a small coffee station in Fire on Ice, a popular restaurant in Uttara, L'Espresso opened its first

independent outlet in Banani. It's been a few months and the shop already has its share of regular customers who come in and order their favourite latte or cappuccino.

The menu includes all the classic coffee drinks like latte, Americano, espresso, as well as some exclusive items like the Bangla Coffee, which was created through experiments taking inspiration from the popular multi-layered tea from Sylhet, and the Coconut Coffee which is a rendition of a popular Vietnamese drink.

The food menu includes desserts like brownies, waffles, and tiramisu. I had the Tiramisu Coffee which is another popular item on their menu and the Bologna Waffle Sandwich with Cheese. The coffee was smooth – not too strong – and the

waffles were soft and quite filling, making for a perfect brunch.

"We didn't want to be like any other coffee shop that sells all kinds of food but does not capture the essence of a coffee place. You will notice that we have a counter where you can buy your coffee and take it on the go. Our food items are designed to complement our coffee experience," says Nafiz.

The shop on Road 8, Banani is open every day from 11 AM to 11 PM. If you are looking for a place to relax and enjoy a nice cup of coffee alone or with friends, L'Espresso could be the coffee shop for you.

Find Mohua Mouli at mohua210@gmail.com