

STYLE COUNCIL

As we transition from summer to fall, we want ourselves to reflect the change, don't we? The concept of this makeover is to bring all the attention to the eyes; matte pops of colour paired beautifully with bronzed, glowy skin and nude lips. This easy-to-achieve look carries the essence of the transition while staying wearable for almost every day of the year! Colourful yet sultry, are you ready to let your eyes speak for themselves?

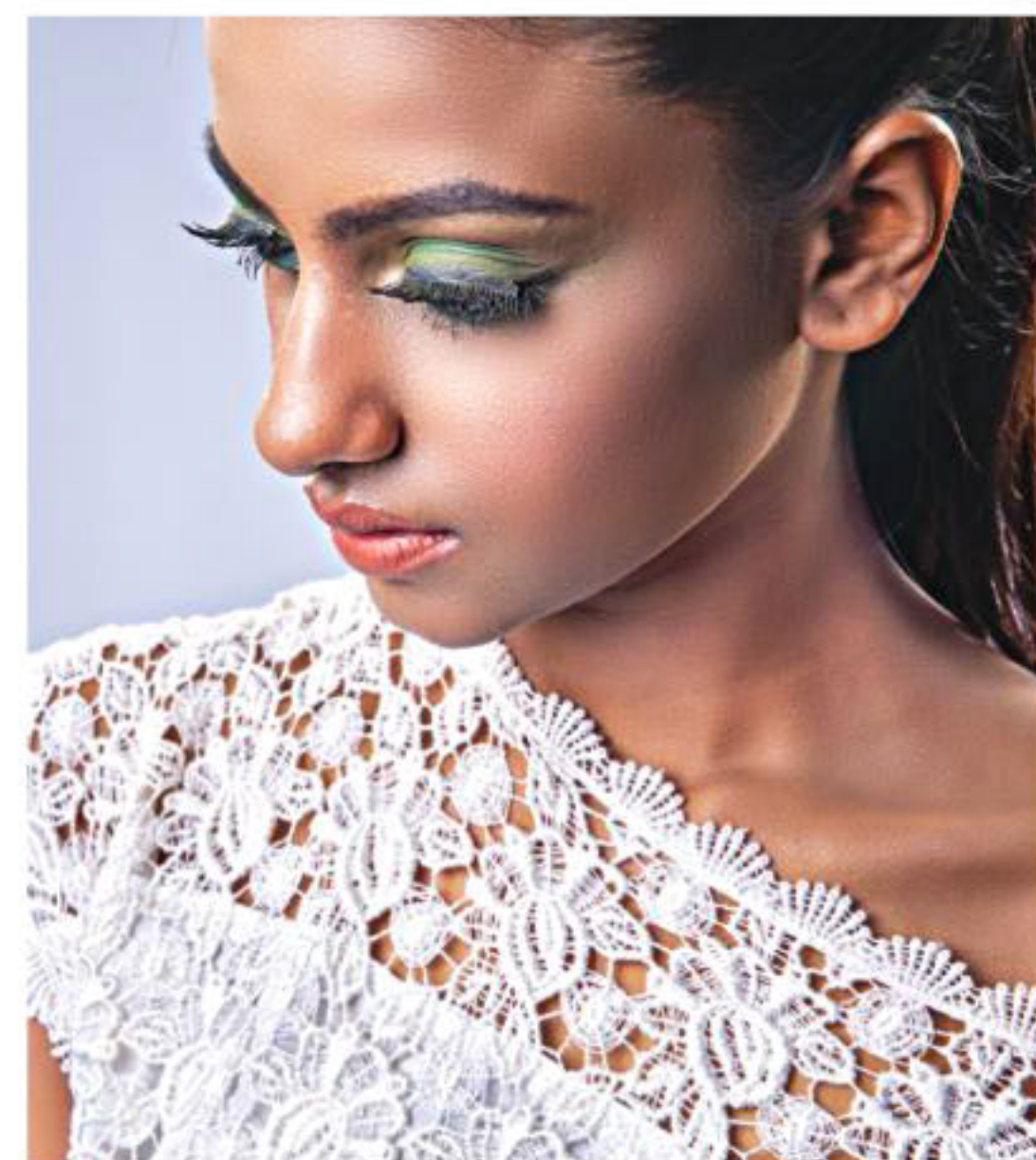


TEAL NECESSITY

Teal is definitely the bridge between a shocking, cobalt blue and a deep, forest green. Since season-wise we're in an in-between, teal is currently the perfect match for us! Paired best with neutral toned clothing such as black, beige or grey; you can always experiment with other colours to see which combination looks the best on you! Matte teal eyeshadow smoked out on the eyes look absolutely gorgeous on brown complexion. For an effortless look, you can smudge out the teal close to your lash line creating a faux wing. Teal eyeliner pencils are both easy to use and find; you can use that as well for a quick cat-eye or simply on the waterline.

MYSTIC GREEN

Green is a colour that complements brown eyes the best. It adds a spark of mystery to the eyes, which on women, is always to die for! Make a matte green your go-to this fall by blending it all over your lid. Olive green is trending this year and looks great paired with all the usual 'fall' colors. Pair green smokey eyes with a coral blush; this will add a flush of youthfulness to this deep, intense look.



VIOLET DREAMS

Being the Pantone colour of 2018, there could not be a better timing to wear ultraviolet or any shade of purple to be honest! Purple can look amazing paired with so many different colours. Whether you're going for a black outfit or a blue, white or yellow; purple looks flattering with almost everything! Apply a matte purple shade on the lid and blend it out with a deeper purple on the crease. Blend both the colours out on the lower lash line. Add a hint of lilac shimmery eyeshadow/highlighter on the inner corners and on the brow bone. Apply a soft pink blush on the cheeks to make it all look very cohesive.



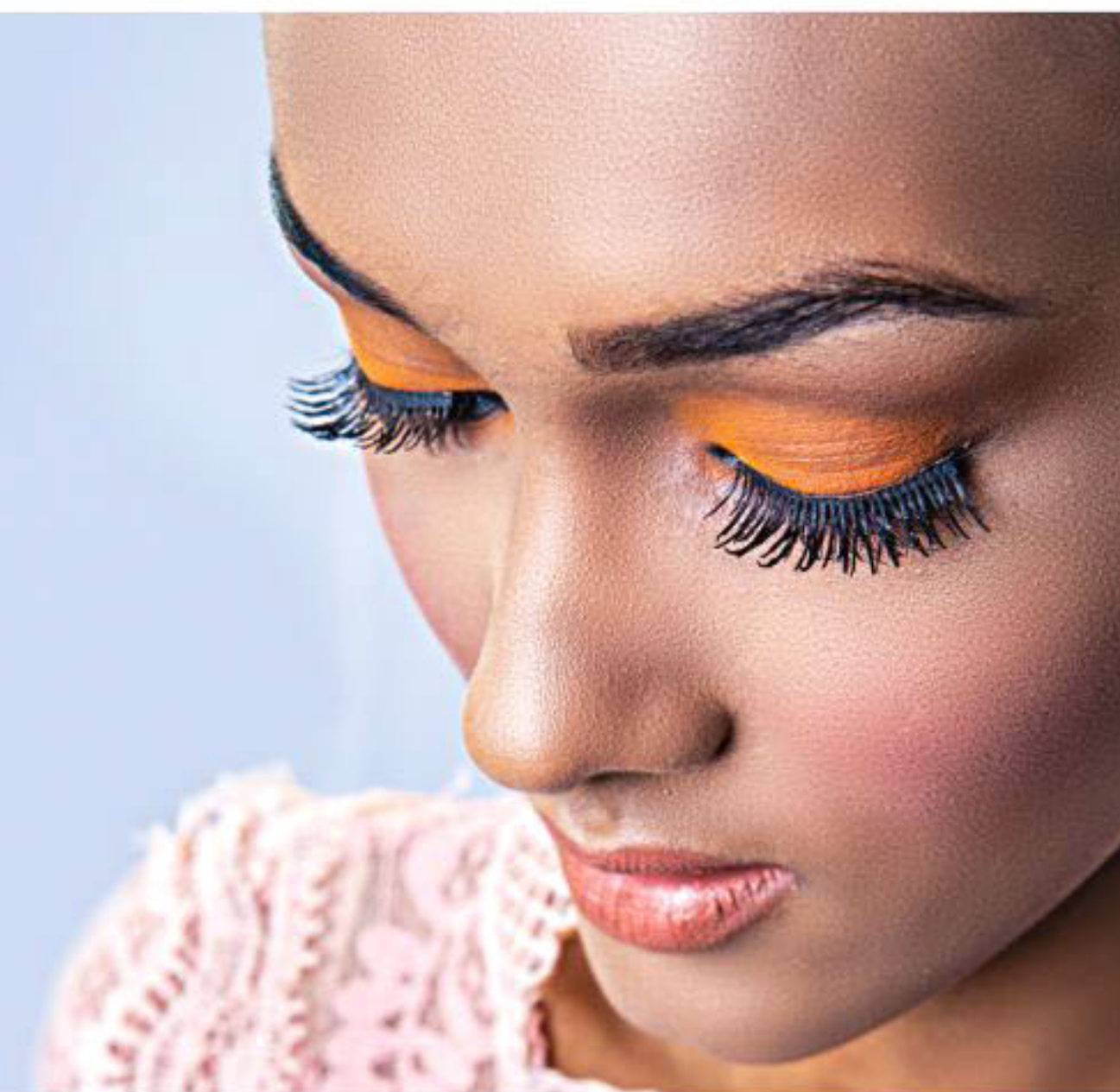
LIFE STYLE

LET YOUR EYES do the talking

TANGERINE TALES

A beautiful burnt orange is the perfect option to have a pop of colour while keeping things very subtle. It screams 'fall' and looks just as delicious as a pumpkin spiced latte! Muted yet colourful, add a matte brown shade on your lid and blend it out with a deep brown on the crease and you are all set for the season. A bright blush is a must have – it helps to add a little flirty to the fun. Pair it with any colour of your choice; summery brights or fall darks- this look will never fail you!

By Zohaina Amreen



METAL BLACK

When it comes to smokey eyes, nothing can beat our classic black. Smokey, sultry, sexy-black goes well with every outfit ever. Take a brown transition shade on the crease and blend it out at first. Next, take any black shade of your choice and apply it all over your lid. Now, take a tiny bit of black on your brush and blend it on the crease; meshing the black and the brown together so that it all looks seamless. As intimidating as black can be, this technique will always give you perfectly blown out, smokey eyes. Don't forget to blend the black on the lower lash line to maintain balance. Lastly, glare into the mirror to see yourself looking as stunning as ever!

Photo: Shahrear Kabir Heemel

Models: Nidhi and Taspia

Make-up: Farzana Shakil's Makeover Salon

Styling: Sonia Yeasmin Isha

