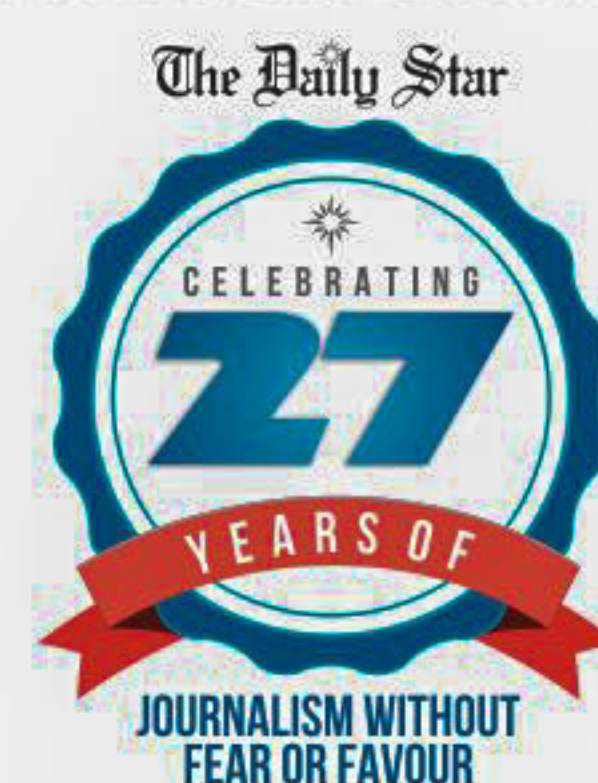


RETHINKING URBAN SPACES DHAKA AND BEYOND



DHAKA THURSDAY
FEBRUARY 22, 2018
FALGUN 10, 1424 BS

3

Imagining a future Bangladesh

Ideas, drawings and visuals for the feature were produced by the research and design team at the Bengal Institute for Architecture, Landscapes and Settlements. In order to support planning initiatives in the country and help imagine the future landscape, Bengal Institute conducts studies at regional and urban scales with multidisciplinary teams of national and international experts.

**KAZI KHALEED ASHRAF AND
SAIF UL HAQUE**

Tomorrow's Bangladesh is already here. Achievements and progress in all fields—from manufacturing to cricket, and from architectural excellence to social indicators—open up new prospects and promises for Bangladesh. PricewaterhouseCoopers, in its

global economic projection for 2050, estimates that Bangladesh can potentially become the world's 28th largest economy by 2030, surpassing countries like Australia, Spain, South Africa, and Malaysia in economic growth.

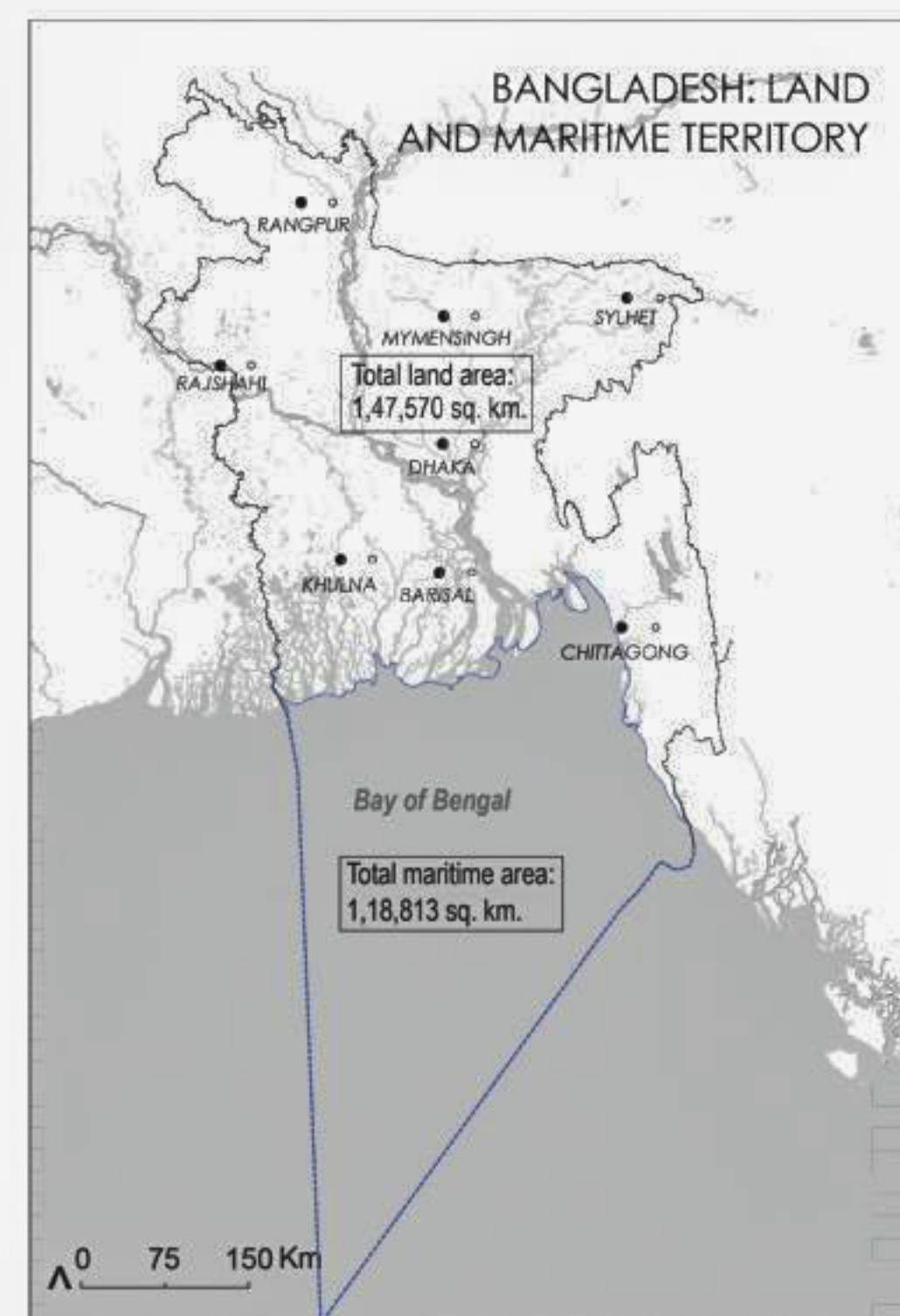
But there are also challenges when things move rapidly. As economic and social transformations are ultimately related to realisations on

the ground, on impacts to the physical and infrastructural landscape, a robust and integrated planning is required to deal with changes. We are reminded of Bangabandhu Sheikh Mujibur Rahman's call for a "comprehensive planning... rather than doing something today, something else tomorrow, and something else day after... which will not solve

problems" (1972). Planning at such a scale requires embracing a new imagination as conventional ones are not enough to deal with the enormity of changes.

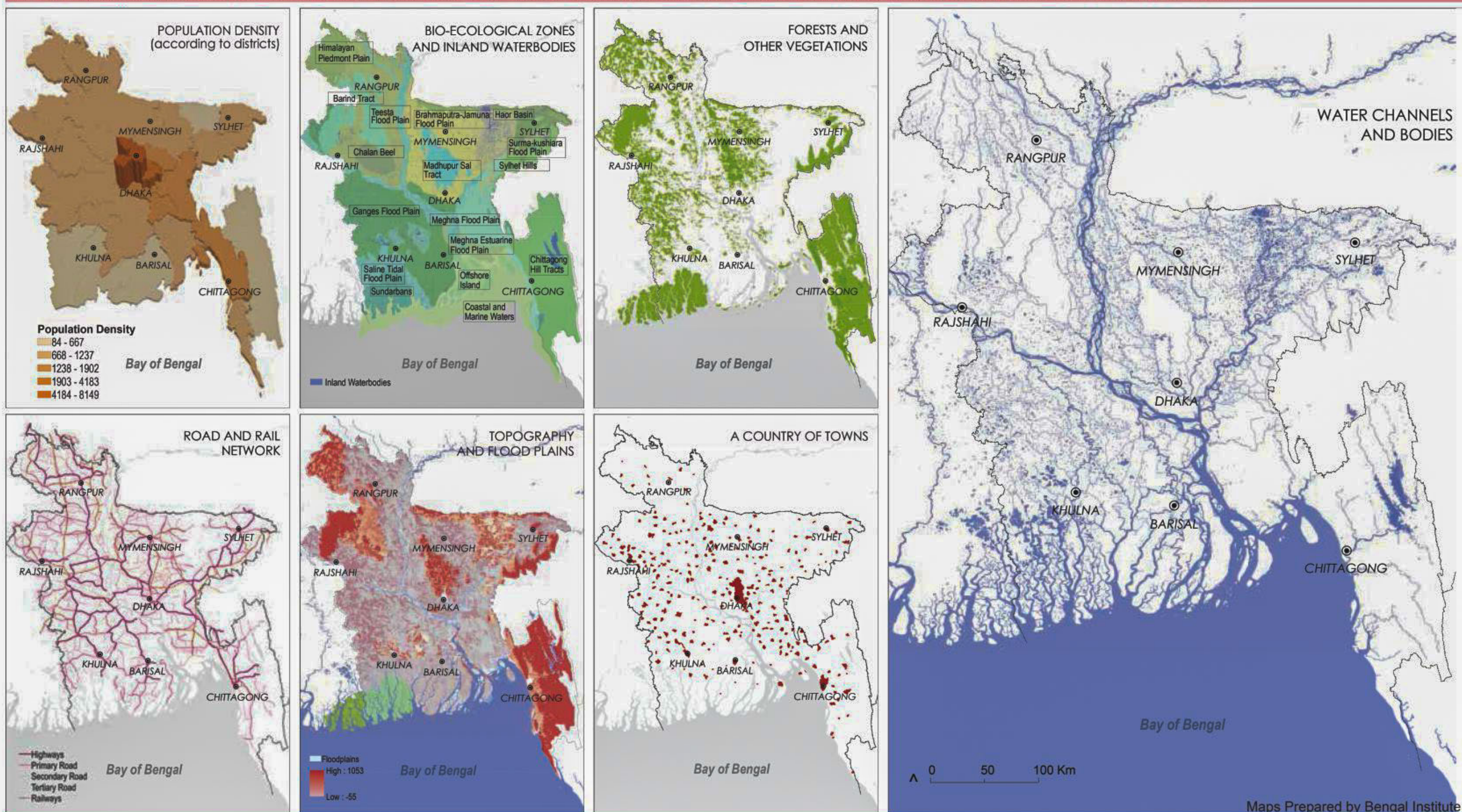
In visualising the future, we need an adjustment of the mental map of Bangladesh. A nation is not only narrated and officiated but also visualised;

CONTINUED ON PAGE 4



MAPPING BANGLADESH

Maps are often windows to invisible but vital facts. Based on studies, Bengal Institute has produced these maps to register the various natural, human and transnational forces that shape the landscape.



AN ATLAS OF LANDSCAPES

Despite its small territorial entity, Bangladesh is a land of geographical diversity. River terrains, flood plains, delta islands, hills, haors and forests, and different kinds of human settlements form the rich, diverse and often fragile landscape of the country.

