

who else but



CELEBRATING 10 YEARS



LIGHT GAUGE BUILDING SOLUTIONS

PEB Steel Alliance in its maiden journey innovated the concept of a light gauge building solution for the earthquake victim rehabilitation in the ADB funded projects in Pakistan. The novel idea resulted in the award of over 11 projects for the design, supply and erection of a total 296 Schools (520 buildings) in earthquake ravaged regions of Azad Jammu & Kashmir and Khyber Pakhtoonkhwa in Pakistan.



The mountainous terrain with inadequate road network needed a structure capable of withstanding high intensity earthquake, sufficient snow load and insulation but at the same time light enough to be carried to remote areas on mules or head loads.



The solution was provided through these light weight pieces that were not more than 10 kgs but when fixed with self drilling screws would turn into formidably strong buildings meeting the stringent criterions set by ADB.



These buildings provide a light weight solution in an innumerable variety of uses, specially in the hilly and coastal terrain that can include accommodations, hospitals, community centers, etc.

CHRONOLOGY OF PEBSAL JOURNEY

- 25 Apr 06** : Formation of PEB Steel Alliance Ltd
- 11 Mar 08** : Awarded 1st of the 11 ADB funded projects for building 296 schools in earthquake devastated regions of Pakistan
- 23 Dec 08** : Built the multi storied office, MTB Centre on Gulshan Avenue
- 22 Jan 10** : Built the SAF Games Torch
- 12 Nov 10** : Built a power plant for TSK, Spain
- 12 Oct 12** : Launched official website www.pebsteelliance.com.
- 20 Jun 14** : Completed Holcim cement factory using Euro Code
- 03 Mar 15** : Coca Cola (IBPL) awarded its project to PEBSAL
- 10 Jul 15** : NBR conferred award to PEBSAL for being the Highest VAT Payer in Manufacturing Category in Comilla District 2013 - 2014.
- 07 Aug 15** : Participated in the 'Safe Home Expo 2015' in Kathmandu, Nepal.
- 23 Dec 15** : Celebrated 1 million safe man working hours in Coca-Cola (IBPL) Project
- Ongoing** : PEBSAL continuing building the 26th factory for Youngone at KEPZ. The cumulative area of all these factories is 1,840,776 sq ft (approx)

PEBSAL OVERVIEW

- Head Office Location** : Priyo Prangon Tower (12th Floor), 19 Kemal Ataturk Avenue, Road No 17, Banani, Dhaka 1213.
- Factory Location** : Dhaka - Chittagong Highway, Zamura, Mia Bazar, Chouddagram, 112 km from Dhaka
- Manpower** : **Head Office** - 65 (41 Officers + 24 Staff)
Factory - 419 (15 Officers + 404 Staff & Workers)..
- Project Implementation Dept.**: 241 (16 Officers + 225 Supervisors & Workers)
- Total Land Area** : 1093 decimal.
- Covered Area** : 165,000 sq ft. Expansion ongoing for another 50,000 sq ft.
- Machineries** : CNC based cutting, drilling, welding, shot blasting, roll forming, bending machines.
- Ongoing Projects** : 37
- Project Locations** : DEPZ, Narayanganj, Tangail, Gazipur, Savar, Sripur, Ashuganj, Lalmatia, Mymensingh, Naogaon, Comilla, Comilla EPZ, Chittagong, CEPZ, KEPZ

PORTACABINS IN UN MISSIONS

PEB Steel Alliance Ltd designed and supplied 570 Porta Cabin to Bangladesh Armed Forces for use in UN Mission in Central African Republic and Mali in accordance with UN Specifications. These included single accommodation units of 600 sq ft, multiple units and ablution units. However, when assembled in tandem, it can be used in a variety of ways like Hospitals, OTs, Mosques, Mess, etc.



With elementary training, it can be erected by 6-8 persons in a short time of 9-10 hours. PEBSAL also provided training to more than 300 army personnel on the erection methodology at its factory in Comilla.



These Portacabins have a considerably long life and are unique as it can be assembled, dismantled and re-assembled making it reusable and economically most viable.



PEBSAL is proud to have its engineers and supervisors work shoulder to shoulder with Bangladesh Army as part of UN Peace Keeping Missions in war ravaged countries of Central African Republic and Mali.



Aircraft Hangar



Cement Factory



Garments Factory



Glass Factory



Warehouse

WHY PEBSAL

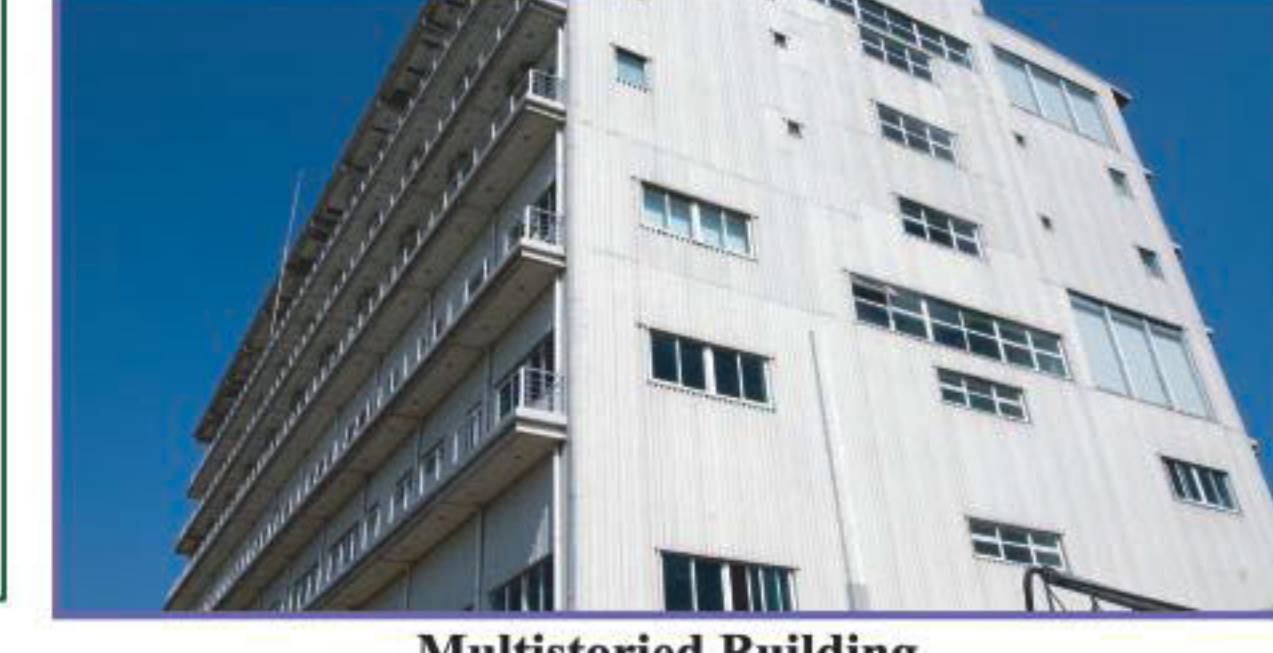
ISO 9001: 2008 Certified Company
OHSAS 18001: 2007 Certified Company
 Associate Member of American Institute of Steel Construction (AISC)
 Design Dept with Licensed Staad Pro and Tekla Structures software
 Premium grade imported raw material used for quality products
 In house NDT Equipment for quality assurance
 Best equipped PEB Company for Steel Building Construction
 Engineers/Supervisors with international project experience in Africa, Pakistan, Maldives & Afghanistan
 Benchmark of Quality and Commitment
 Over **85%** Repeat Clients



Inland Container Depot



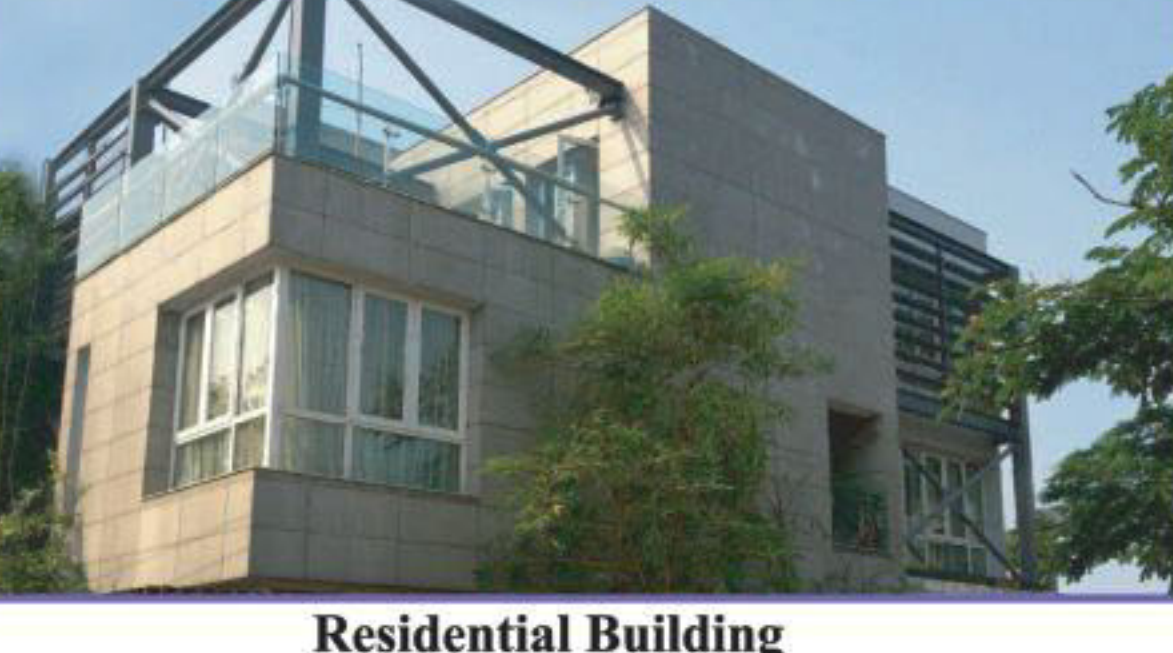
Sugar Storage



Multistoried Building



Shoe Factory



Residential Building



Power Plant



Pharmaceutical Industry

SELECTED ONGOING PROJECTS



ACI Health Care Bay Leather Coca Cola Factory CMT Garments Factory Linde BD Partex Impregnation Plant PHP Cold Rolls Coil Storage Shed Wisdom Attires Factory

OUR CLIENTELE BASE

