



COVER STORY

ART AND ASSEMBLY

The making of a rickshaw

Rickshaw, too, is a product of assembly. Numerous parts, components, materials and thrown-away items go into the making of a rickshaw. And the rickshaw combines art and mechanics to form a vehicle that is nothing short of heritage in motion.

The magic of a machine lies in its assembly. That machine can be the human body - a complex set of cells and tissues and organs, each component specialised in performing an essential function, which, put together perfectly, makes a human being. The machine can be a clock - a collection of intricate mechanisms that coordinate to tell us hours and minutes, down to the second.

Rickshaw, too, is a product of assembly. Numerous parts, components, materials and thrown-away items go

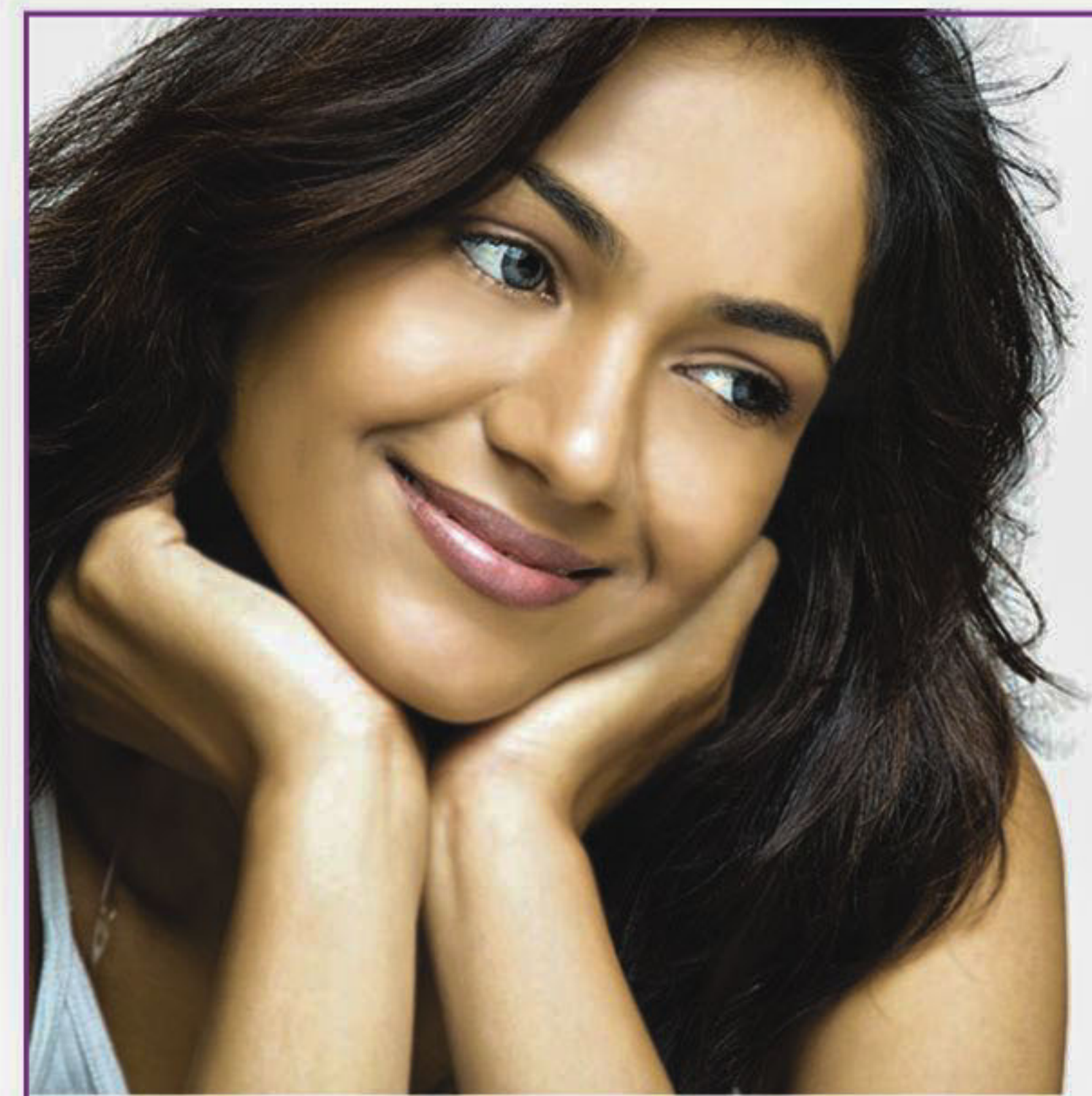
into the making of a rickshaw. And the rickshaw combines art and mechanics to form a vehicle that is nothing short of heritage in motion. A visit to a rickshaw workshop opens one to a fascinating world of art and assembly.

If you ever visit New Fazlu, a rickshaw workshop in West Nandipara, you will understand this for yourself. The plot of land is filled with examples of assembly and assembled things. Beams, ropes, wooden planks, tin and several other objects form an open living area on an elevated platform,

which you can reach by a ladder. Toolboxes and shelves are built and attached to the walls in an unintended shabby chic style.

A wide plethora of random objects, from coconut husks to small pieces of colourful cloths, lie here and there.

And there are rickshaws; in all stages of making. A set of the seat and the foothold of a rickshaw lie in one corner. A bare hood of a rickshaw, without the cloth covering its bamboos, rests on the side. Meanwhile, an unpainted rickshaw awaits decoration.



LIGHT Sheer DUET™
NOW IN TOWN !!!



What everyone wanted, now it's reality. The best laser hair removal in the world very quickly and almost painlessly.

The new Light Sheer Duet joined efficacy of already known Light Sheer ET apparatus with a greatly reduced treatment time and drastically reduced pain.

Furthermore, the Duet has a unique vacuum system, which aims to rectify skin and its surface, that allows the destruction of hair virtually painlessly.

Highlights:

- ◆ Treatments 75% faster, ◆ No gel ◆ No anesthesia
- ◆ Safe for any skin type

The LightSheer Duet is a state of the art equipment that can be applied to any area of the body. Usually done on upper lip, chin, face, back, arms, underarms, bikini area, legs, lower abdomen, chest.



Dr. Jhumu Khan

MBBS (DMC), DCD (UK),
MSc(Germany) Board Member WOCPM,
Diplomat (WOSAAM) Dermatologist, Anti aging
& Regenerative Medicine Specialist

Dr. Jhumu Khan's
Laser Medical

NEW LOOK NEW LIFE

Gulshan
01711660938

Dhanmondi
01727001199

Uttara
0178411888

f/lasermedicalcenter, web: lasermedicalbd.com