

**NEON BLINKERS**

Neon doesn't just have to be restricted to the lips. You can choose to add a little pop of colour to your eyes as well. Try to use a coloured eye pencil to line your eyes, because you won't get a clean look with eye shadow. Make sure the eye pencil is well-pigmented and waterproof. Before you buy a coloured eye pencil, always apply some to your hand to see how easily the colour glides on.

Neon accents on the eyes are not a flattering look for everyone, however. It depends heavily on not just your age and occasion, but also your personality. So ask yourself, can you carry off this daring look? If you decide to work it, make sure you own it.

**EYE MAINTENANCE**

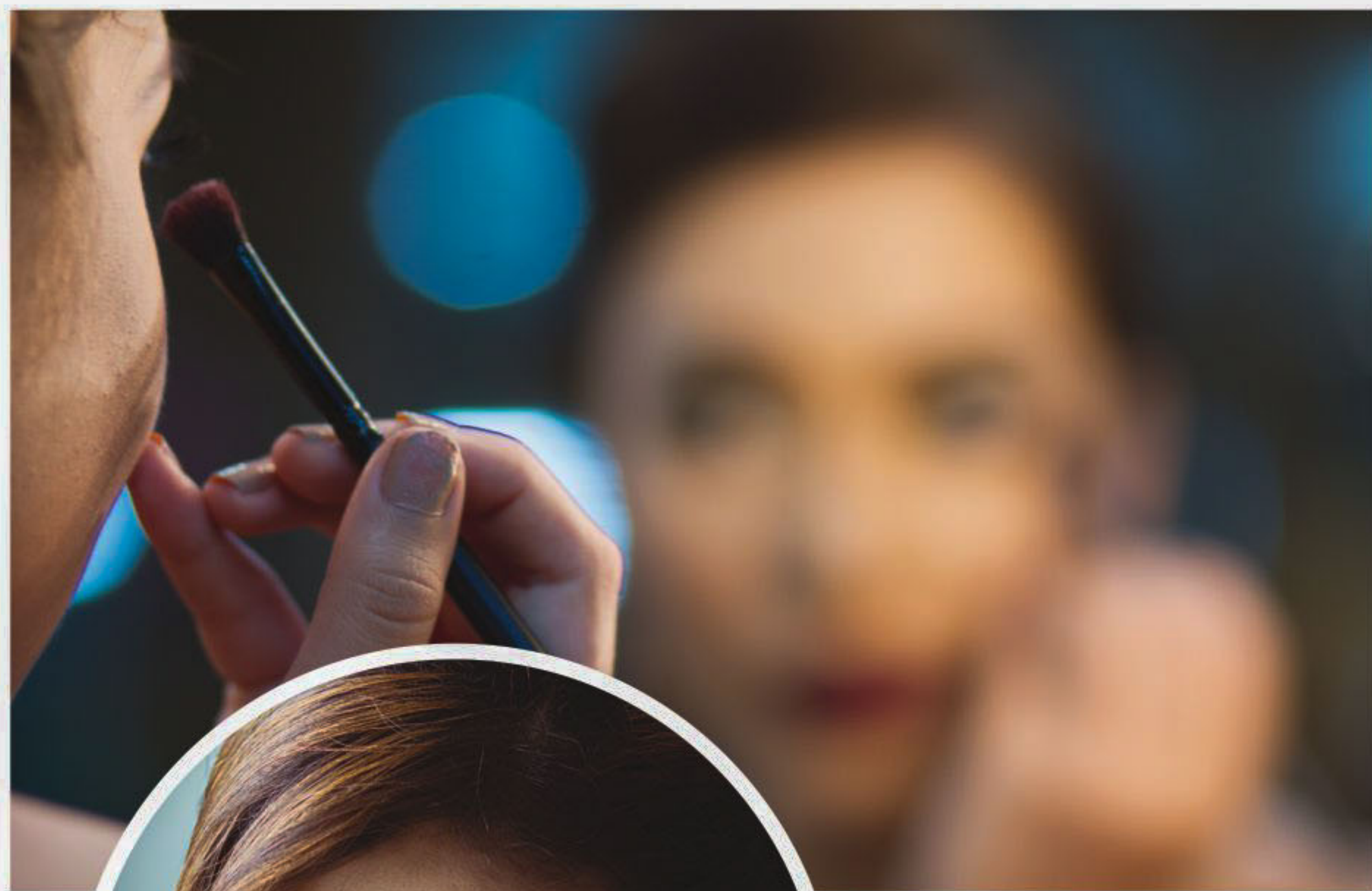
The skin around the eyes is extremely thin and delicate, you'll notice if you touch it. And to think we harass it every day by using eyeliner or kohl! Your eyes are also the first part of your face which will give in to ageing, so handle them with care. Use only the best eye makeup products, and invest in a good eye makeup remover. Oil based ones like the Lancome Bi-Facil eye makeup remover is worth the price. Remove eye makeup using cotton wool or cotton pads. Before you go to bed, make a habit of dabbing on some under-eye cream for the much needed moisture.

**BE-JEWELLED**

Want to match your eye makeup to your outfit? To add some colour but still maintain your elegance, you can add a jewel toned eyeshadow to just your eyelid. We specify jewel tones like azure, copper or emerald green because they suit our skin tones, and don't look out of place on the eyes. Like you won't wear blue on your lips, you really shouldn't wear orange on your eyes!

**YES TO SMOKING**

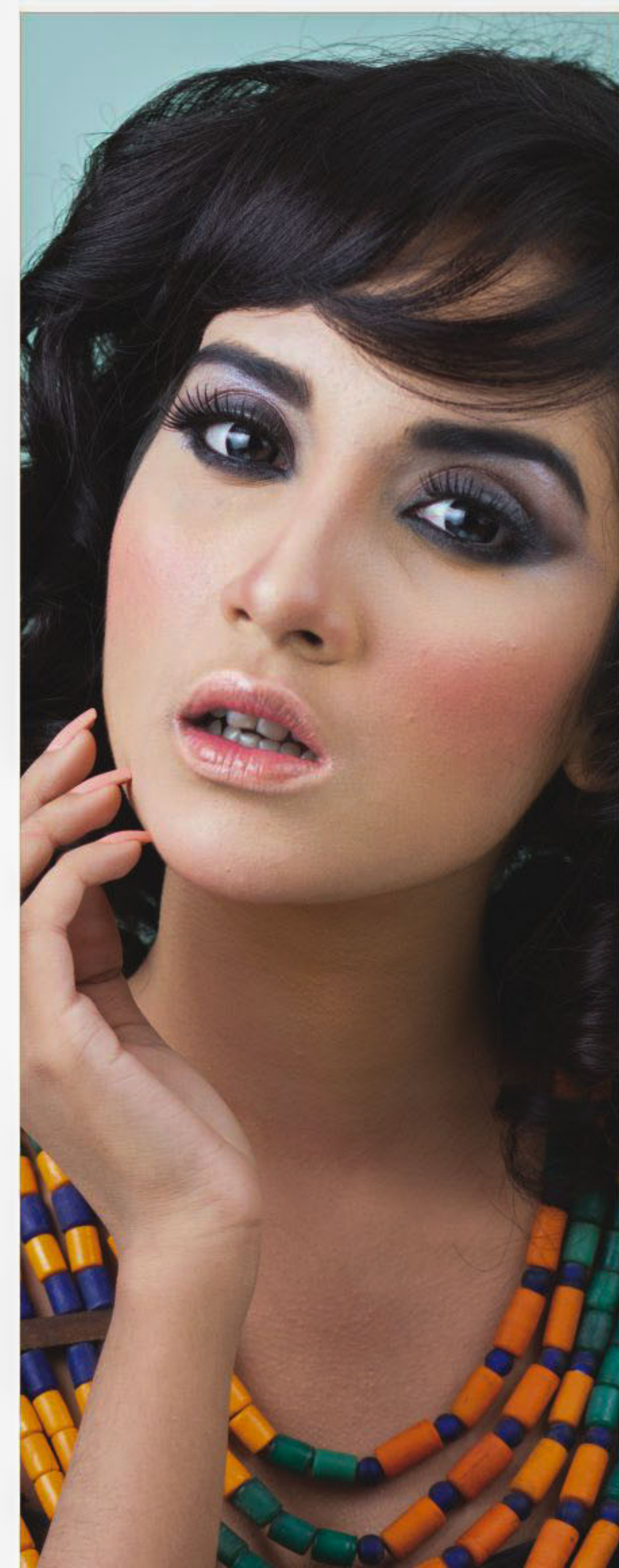
Now here is a look that suits almost everybody out there. Can you go wrong with smoky eyes? Yes, you can, if you go over the top with the dark eye shadows. The trick to the perfect smoky eye is knowing exactly when to stop applying your eye makeup. Too much and you'll look like a racoon; too little and there might not be enough impact. An elegant smoky eye isn't just about smacking on a lot of kohl; there is a complicated play of lots of colours involved. Maybelline has some excellent smoky eye palettes, with instructions on which colour to apply to which part of your eyes.

**CAT EYES**

Take the winged eyeliner look a level up by thickening the line a-la Cleopatra. First, put some high-lighting eye shadow on your lid and brow bone (like gold or silver), and then cover just the eyelid with dark eye shadow for a nice backdrop. Using liquid eyeliner, draw a long wing first on your eyelid, then draw another parallel line that flares out. Carefully join them together and finish off with a pointy end. You can also make your eyes appear larger by using white eyeliner on your waterline, and then drawing a subtle line with the darker eyeliner under the white.

**THE "NO MAKEUP" LOOK**

The newest eye makeup trend out there is to look like you haven't done anything to your eyes at all; you just simply open your eyes and look fabulous. Hello, big fat lie. The reality is, you have to curl your eyelashes, hide the dark circles under your eyes with concealer, add some highlighter around your waterline and go overdrive on the mascara. This look works best with either a bright or an oxblood lip colour. To avoid looking washed out, you might also have to contour your face using some bronzer, blush and highlighter.



BY MEHEREEN AZIZ

PHOTO: SAZZAD IBNE SAYED

MODEL: JOLY, ABONI, SHOUMI, MOUSUM, LINDA

MAKEUP: FARZANA SHAKIL

JEWELLERY: KOLORS OF KATHMANDU

STYLING: TABASSUM ANILA HRIDI