

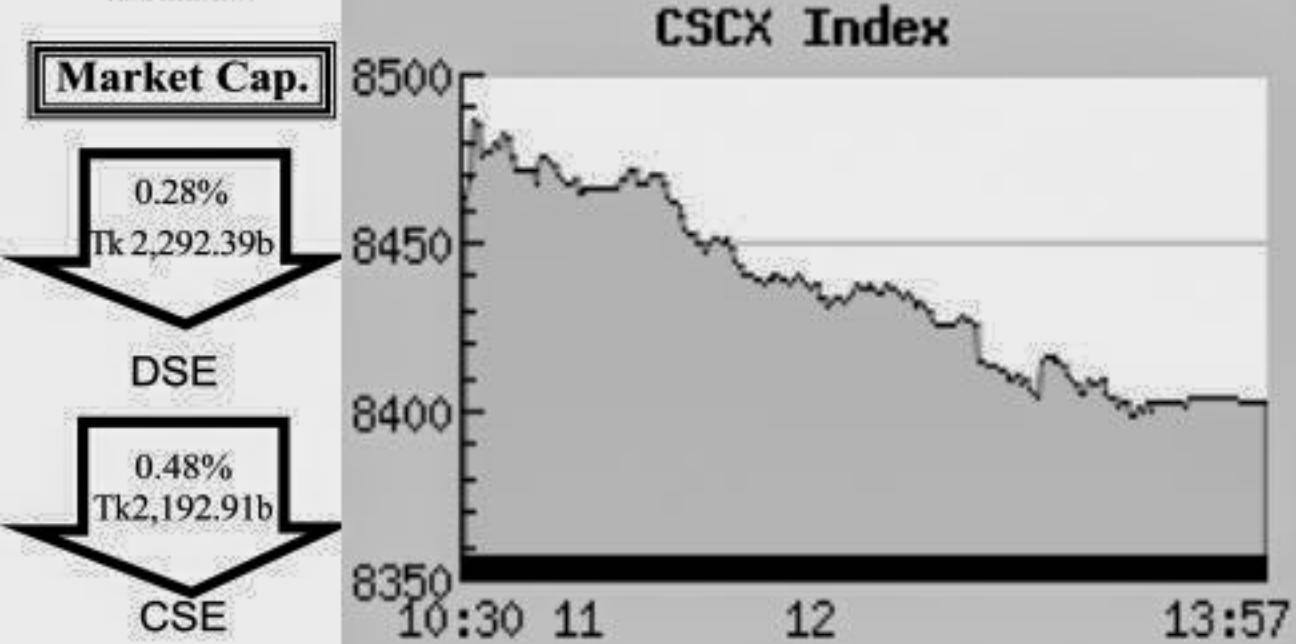
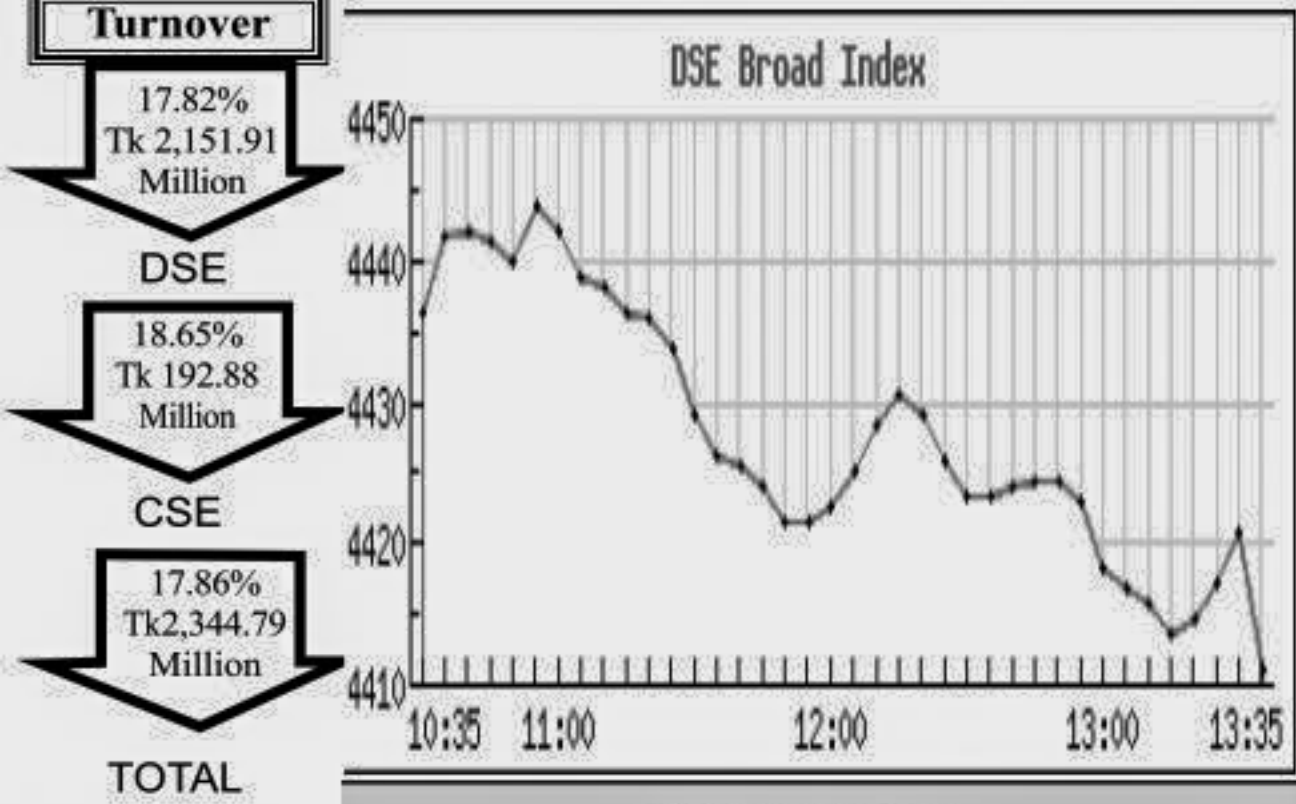
Capital Market Highlights:

INDEX July 06 2014

INDEX	DSE SHARIAH	DSE 30
Broad Index	997.77981 (-0.51%)	1612.23039 (-0.59%)
DSE	4411.15829 (-0.56%)	
CSE	CSE CSCX	CSE 30
All Share	8403.7859 (-0.70%)	11204.5846 (-1.09%)

Turnover

DSE	17.82% Tk 2,151.91 Million
CSE	18.65% Tk 192.88 Million
CSCX	17.86% Tk 2,344.79 Million
TOTAL	
Market Cap.	0.28% Tk 2,292.39b
DSE	
CSE	0.48% Tk 1,92.91b



Key Features - July 06, 2014

Indicators	DSE	CSE	TOTAL
Turnover (Million Taka)	2,151.91	192.88	2,344.79
Turnover (Volume)	63,518,681	6,202,465	69,721,146
No. of Contract	61,175	9,496	70,671
Traded Issues	289	190	289
Issue Gain (Avg. Price Basis)	93	52	93
Issue Loss (Avg. Price Basis)	183	134	183
Unchanged Issue (Avg. Price Basis)	13	3	13
Market Cap. Equity (Billion Tk.)	2,292.39	2,192.91	2,292.39
Market Cap. Equity (Billion US\$)	27.79	26.58	27.79

Combined Turnover Leaders

Company	Volume (Share)	Value (M. Taka)	% of Total	Average Price
BEXIMCO Ltd. -A	5859232	200.69	8.56	34.25
Apollo Ispat CL -N	4364000	131.89	5.63	30.22
Generation Next Fashions-A	5648844	104.90	4.48	18.57
Grameenphone-A	327600	96.34	4.11	294.09
The Peninsula CTG-N	2465600	88.02	3.76	35.7
Lafarge Cement-Z	886000	68.98	2.94	77.86
BD Building Systems -A	1170400	66.58	2.84	56.88
UNITED AIR-A	4505895	58.40	2.49	12.96
Famyltexp (BD) Ltd.-A	2365400	57.24	2.44	24.21
Aftab Auto.-A	654546	52.52	2.24	80.24
Square Pharma -A	181405	50.72	2.16	279.58
Beximco Pharma -A	1124673	47.87	2.04	42.56
BSC-A	81550	42.83	1.83	525.17
Barakatullah E. D.-A	1217756	39.21	1.67	32.2
BD Submarine Cable-A	206737	37.71	1.61	182.42
Padma Oil Co. -A	120000	37.70	1.61	314.21
Meghna Petroleum -A	126582	33.86	1.44	267.46
BSRM Steels-A	389857	31.66	1.35	81.22
GBB Power Ltd-A	1189127	28.17	1.20	23.69
MJL BD Ltd.-A	348668	27.74	1.18	79.55
Beach Hatchery -A	1038500	27.71	1.18	26.68
BD. Thai Alum -B	909356	25.37	1.08	27.9
AB Bank - A	971536	23.98	1.02	24.69
National Bank - A	2033094	23.49	1.00	11.55
Eastern Housing -A	379486	22.38	0.95	58.96
Mithun Knitting -A	201120	21.39	0.91	106.35
Premier Bank -A	1998122	20.34	0.87	10.18
Active Fine Chem.-A	321836	19.79	0.84	61.48
Al-Haj Textile -A	116665	19.48	0.83	167.01
Summit Power -A	595723	19.47	0.83	32.68

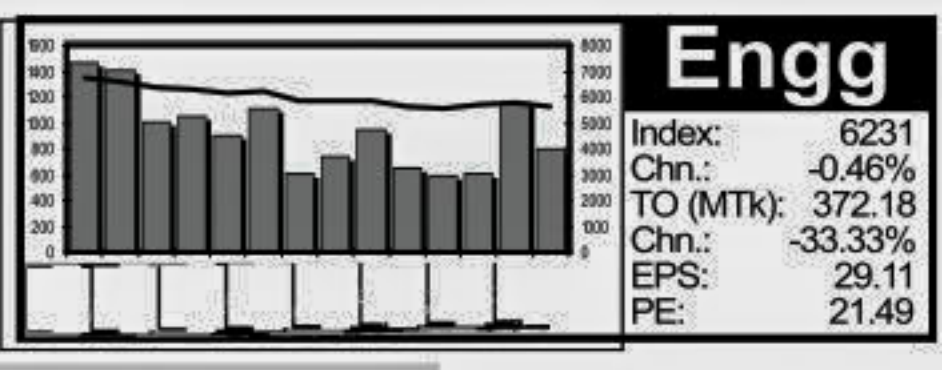
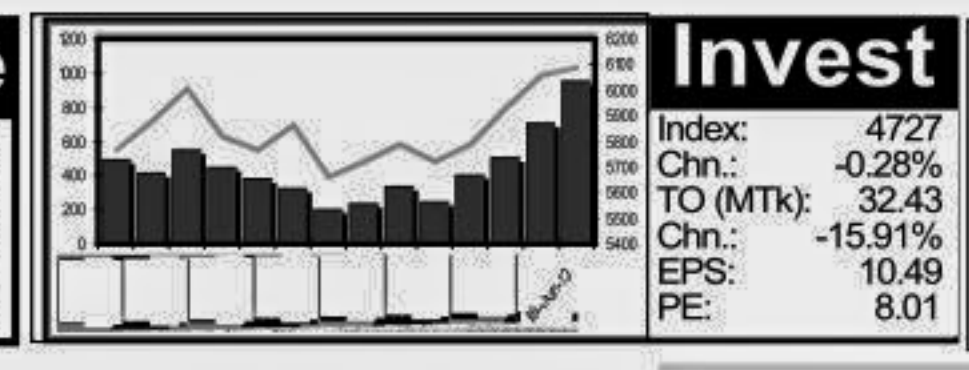
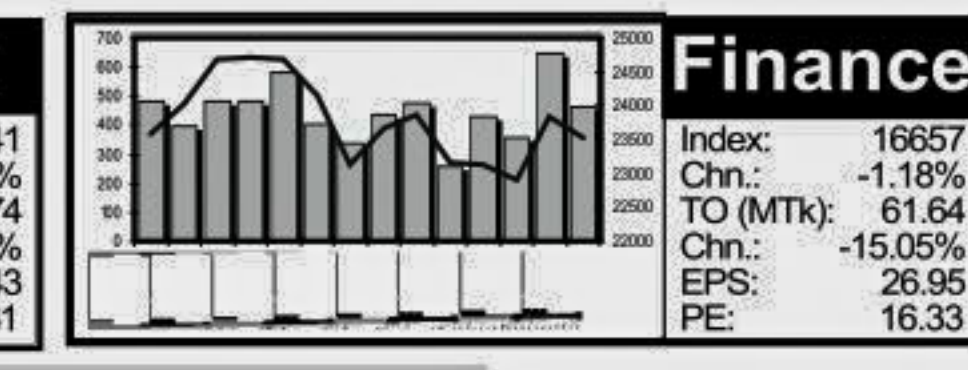
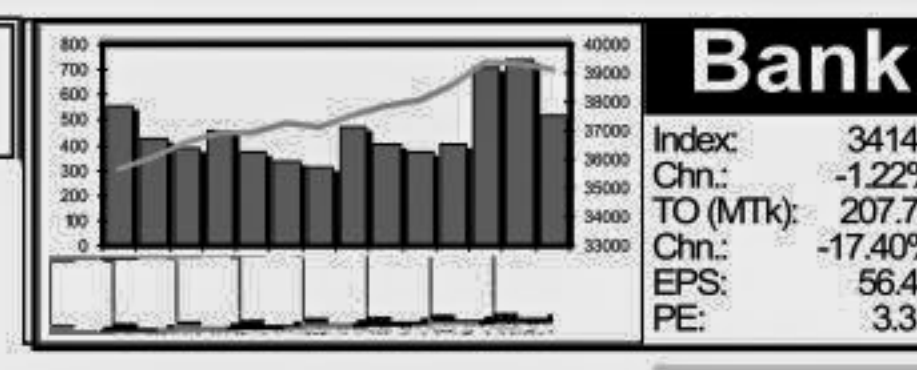
Sectoral Turnover Summary

Sector	DSE		CSE		Total	
	Mill. (Tk)	%	Mill. Tk.	%	Mill. Tk.	%
Bank	192.97	8.97	14.76	7.30	207.74	8.82
NBFI	56.66	2.63	4.99	2.47	61.64	2.62
Investment	29.85	1.39	2.58	1.27	32.43	1.38
Engineering	345.92	16.08	26.26	12.99	372.18	15.81
Food & Allied	99.50	4.62	6.69	3.21	106.19	4.47
Fuel & Power	215.11	10.00	17.16	8.49	232.27	9.87
Jute	0.75	0.03	0.00	0.00	0.75	0.03
Textile	298.38	13.87	25.12	12.42	323.49	13.74
Pharma & Chemical	215.65	10.02	10.09	4.99	225.74	9.59
Paper & Packaging	0.14	0.01	3.11	1.54	3.25	0.14
Service	26.79	1.24	1.43	0.71	28.22	1.20
Leather	22.89	1.06	3.83	1.90	26.72	1.14
Ceramic	9.45	0.44	0.70	0.35	10.15	0.43
Cement	94.70	4.40	9.01	4.46	103.72	4.41
Information Technology	16.01	0.74	1.45	0.72	17.46	0.74
General Insurance	25.56	1.19	0.46	0.23	26.02	1.11
Life Insurance	34.15	1.59	2.51	1.24	36.65	1.56
Telecom	109.85	5.10	24.21	11.97	134.06	5.69
Travel & Leisure	129.37	6.01	23.71	11.73	153.09	6.50
Miscellaneous	228.06	10.60	25.09	12.41	253.15	10.75
Debtenture	0.17	0.01	0.05	0.03	0.22	0.01

Sectoral P/E & EPS

Sector	P/E		EPS(%)	
	DSE	CSE	DSE	CSE
Bank	3.31	3.29	56.43	56.43
NBFI	16.33	16.32	26.95	27.29
Investment	8.01	8.13	10.49	10.49
Engineering	21.49	21.16	29.11	28.30
Food & Allied	30.93	32.17	116.90	117.77
Fuel & Power	11.79	11.60	64.22	64.22
Textile	9.07	8.50	27.88	27.87
Pharma & Chemical	27.95	27.45	54.28	46.51
Paper & Printing	27.19	29.91	8.39	8.92
Service	19.21	19.15	18.94	18.94
Leather	16.39	16.43	123.30	148.41
Ceramic	36.41	36.33	10.84	10.84
Cement	18.78	18.81	54.20	54.20
IT	15.62	15.40	12.74	12.74
General Insurance	10.69	10.30	28.20	29.51
Life Insurance	26.81	30.40	41.73	41.73
Telecom	27.12	27.80	103.81	103.81
Travel & Leisure	17.74	17.70	17.83	18.75
Miscellaneous	55.36	56.66	7.19	6.91
Stock Exchanges	10.47	10.29	46.79	46.68

Prepared exclusively for Daily Star by Business Information Automation Service Line (BIASL) on the basis of information collected from daily stock quotations and audited reports of the listed companies. High level of caution has been taken to collect and present the above information and data. The publisher will not take any responsibility if any body uses this information and data for his/her investment decision. For any query please email to biasl@bol-online.com or send SMS to 01552153562 or go to www.biasl.net



Capital Gainers

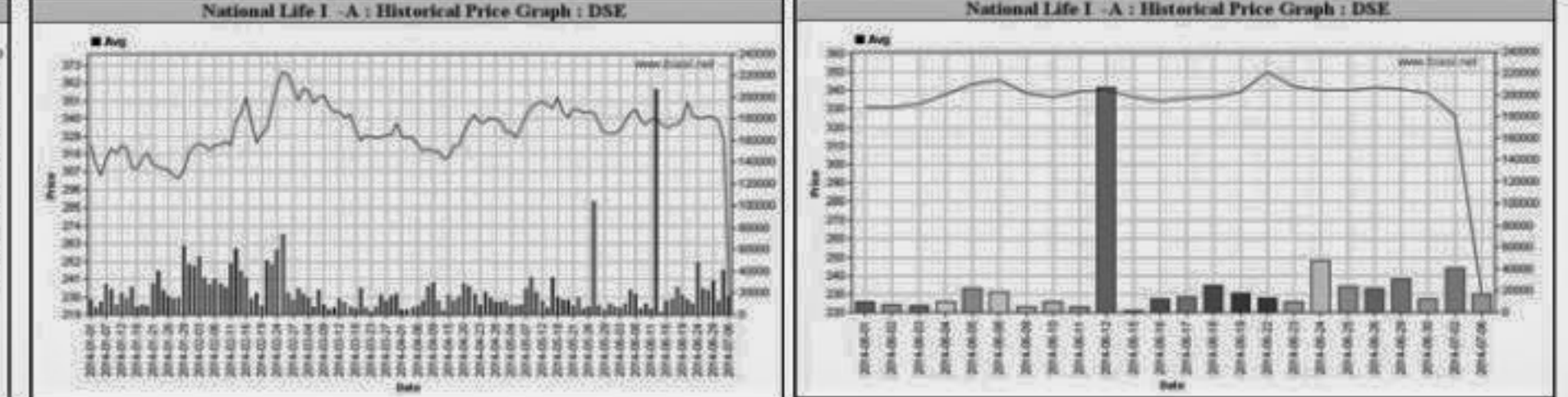
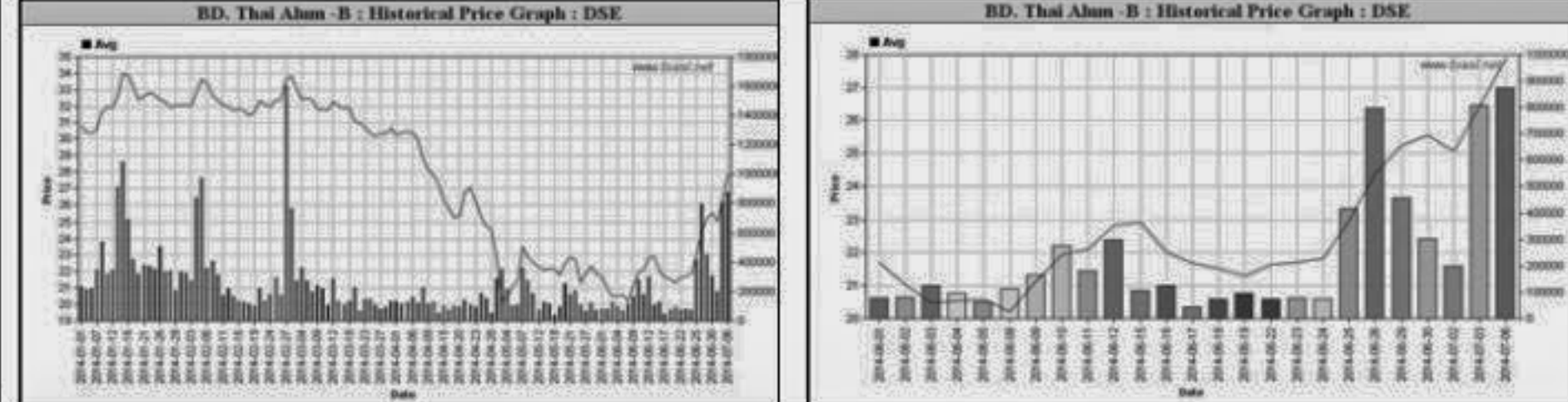
Dhaka Stock Exchange

Company	Price Chn. (%)		Price Scale		T'over	Audited	Latest								
	Clo	Avg.	D Hi	D Lo											
BD. Thai Alum -B	9.30	5.44	27.89	28.20	28.30	25.00	36.0	17.4	24.422	35.96	-0.12	-ve	0.84	33.2	Q1
Midas Financing-Z	9.28	9.68	21.30	21.20	21.30	21.00	42.0	14.5	0.643	10.21	0.16	133.1	-6.91	-ve	Q3
BATBCL -A	4.71	3.48	2,426.56	2,474.70	2,461.50	2,377.00	2655.01	0.050	0.15	894.148	3681.14	29.9	82.80	29.3	Q1
BD Building Systems -A	4.57	4.21	56.88	57.20	57.00	50.00	81.7	0.0	63.502	12.7	1.33	42.8	3.01	18.9	Q3
ICB Sonali Bank 1 MF-A	3.49	2.20	8.83	8.90	9.00	8.60	11.6	6.0	0.834	10.39	0.00	-1.60	5.5	Q3	
Generation Next Fashions-A	3.35	4.33	18.57	18.50	19.00	17.00	41.0	0.0	97.277	15.04	1.87	9.9	2.80	8.1	Q1
1st ICB MF-A	3.26	3.26	950.00	950.00	950.00	950.00	1068.2	821.0	0.048	942.3	75.63	12.6	38.55	24.6	Q3
Barakatullah E. D.-A	2.87	2.39	32.19	33.00	33.00	28.30	47.0	0.0	36.493	19.43	1.48	21.8	1.69	19.0	Q3
Fu-Wang Food-A	2.67	1.54	19.15	19.20	19.50	17.00	32.0	0.0	7.386	12.28	0.94	20.4	0.96	19.9	Q3
Reckitt Benckiser-A	2.56	2.14	1,103.91	1,108.90	1,120.00	1,082.00	2,000.00	0.061	0.2539	91.3	27.42	40.3	4.12	26.8	Q1

Capital Losers

Dhaka Stock Exchange

Company	Price Chn. (%)		Price Scale		T'over	Audited	Latest								
	Clo	Avg.	D Hi	D Lo											
National Life -A	-27.51	-29.48	230.24	232.10	235.00	221.20	375.0	220.0	3.914	80.99	12.34	18.7	12.46	18.5	HY
AIBL 1st Is. M.F-A	-5.97	-5.19	6.40	6.30	6.60	6.20	9.0	5.5	0.365	10.81	1.49	4.3	1.49	4.3	Ad
Premier Leasing-Z	-5.19	-3.88	7.43	7.30	7.50	7.00	13.0	6.1	0.491	11.28	0.04	185.8	0.12	61.9	Q1
Modern Dyeing-Z	-4.40	-2.23	73.33	71.70	74.90	71.10	183.9	58.0	0.022	10.37	0.91	80.6	1.61	45.5	Q3
Jute Spinners-A	-4.13	-4.13	62.60	62.60	62.60	62.60	167.0	52.5	0.003	-39.89	-48.14	-ve	-43.81	-ve	Q3
Beximco Syn-Z	-3.57	-4.03	10.96	10.80	11.20	10.80	21.0	0.0	0.456	25.03	-0.4	-ve	0.76	14.4	Q1
Desh Gamments-B	-3.46	-3.73	109.60	108.80	111.50	108.30	136.0	26.0	3.266	12.12	0.88	124.5	0.96	114.2	Q3
Monno Ceramic-B	-3.17	-3.11	27.71	27.50	28.60	27.50	46.1	25.0	0.852	95.3	0.35	79.2	0.28	99.0	Q3
Saiko Spinning-A	-3.00	-2.24	19.61	19.40	20.30	19.20	34.7	15.2	2.069	20.8	1.04	18.9	1.08	18.2	Q3
ALCI ZERO Bond-A	-2.98	0.13	941.18	920.00	930.00	900.00	947.0	800.0	0.016	1000	0	-ve	0.00	-ve	Q3



Chittagong Stock Exchange

Company	Price Chn. (%)		Price Scale		T'over	Audited	Latest								
	Clo	Avg.	D Hi	D Lo											
Provati Insur.-A	6.12	6.29	20.80	20.80	20.80	20.80	34.0	18.0	0.010	14.4	1.63	12.8	2.24	9.3	Q1
BD. Thai Alum -B	6.02	6.65	28.08	28.20	28.50	27.10	37.0	16.0	0.946	35.96	-0.12	-ve	0.84	33.4	Q1
BD Building Systems -A	5.14	4.48	56.92	57.30	57.00	56.00	82.0	35.1	3.074	12.7	1.33	42.8	3.01	18.9	Q3
BATBCL -A	5.00	5.00	2,415.00	2,415.00	2,415.00	2,377.00	2638.01	0.100	0.121	148.36	11.14	29.8	82.80	29.2	Q1
Lafarge Cement-Z	4.57	5.31	20.64	20.60	20.70	19.60	31.5	18.2	0.076	10.97	1.09	18.9	1.36		