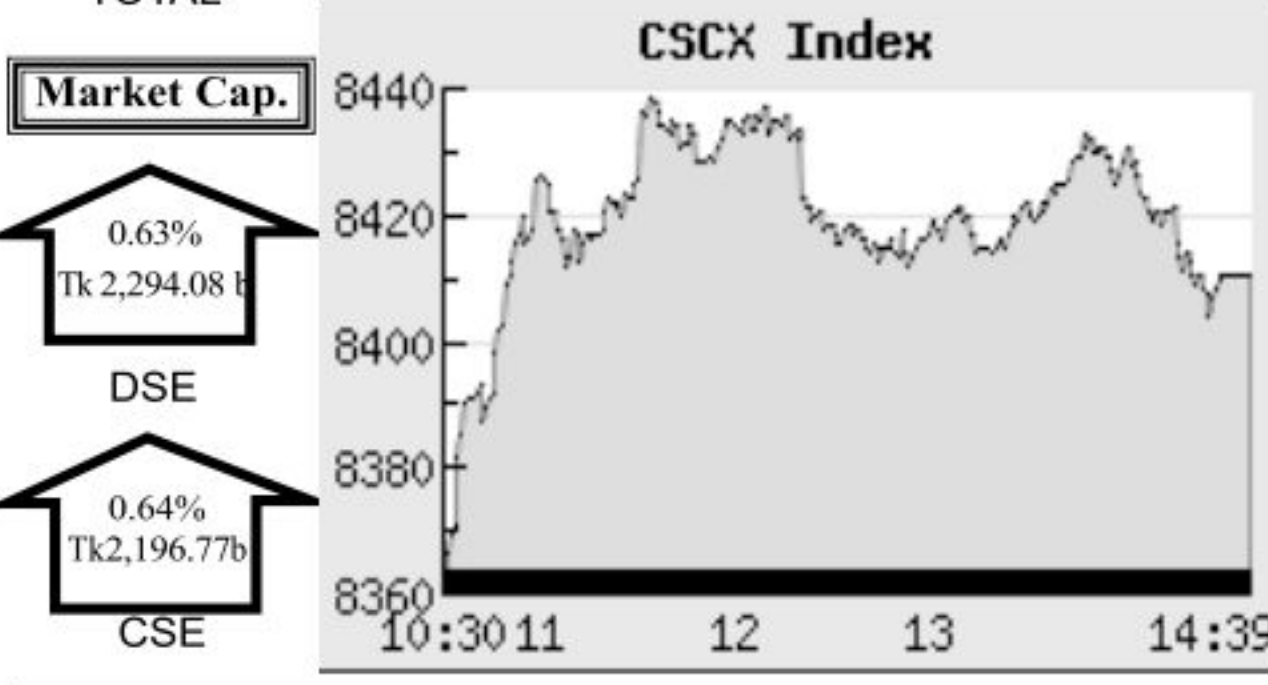
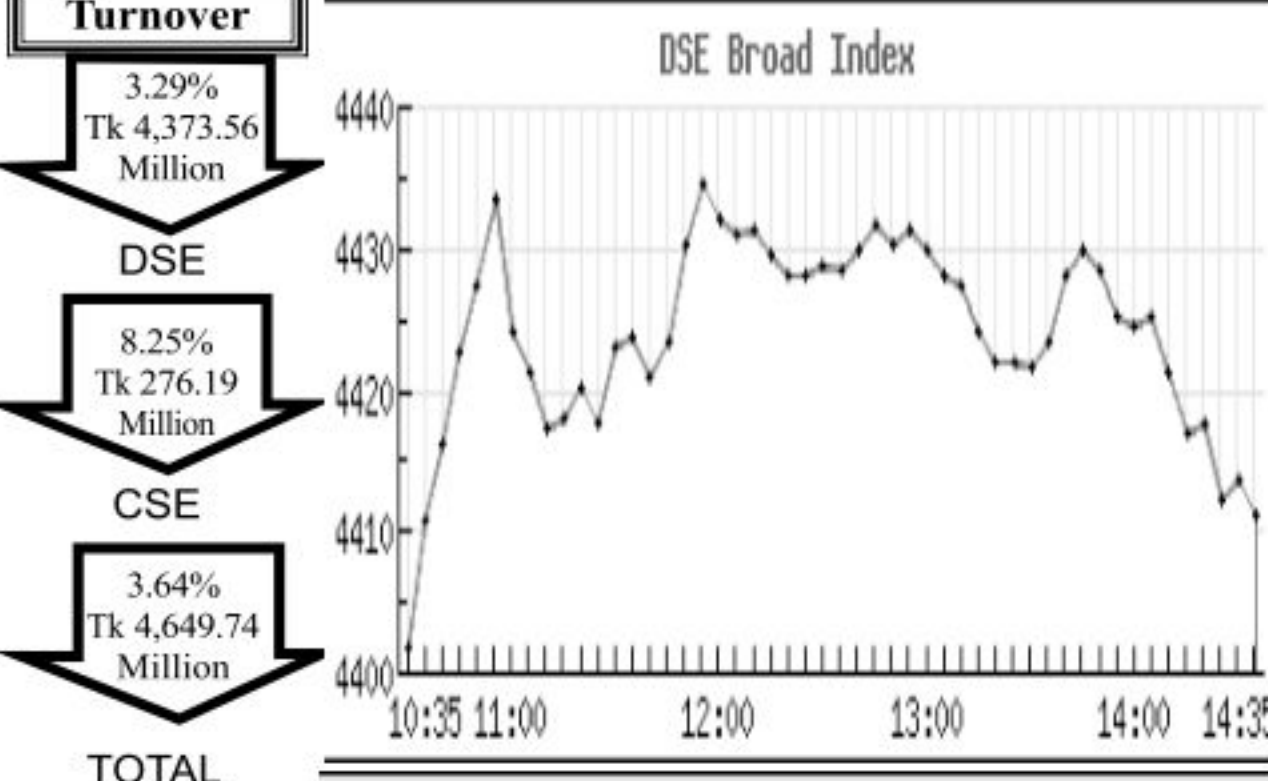


Capital Market Highlights:

INDEX June 11 2014
Broad Index: 4411.17187 (+0.21%)
DSE SHARIAH: 1016.67144 (+0.37%)
DSE 30: 1639.41621 (+0.92%)

CSE All Share: 13594.2252 (+0.23%)
CSE CSCX: 8411.3416 (+0.61%)
CSE 30: 11100.2309 (+0.96%)



Key Features - June 11, 2014
Indicators: Turnover (4,373.56), Volume (84,553.672), Market Cap. Equity (2,294.08)

Combined Turnover Leaders

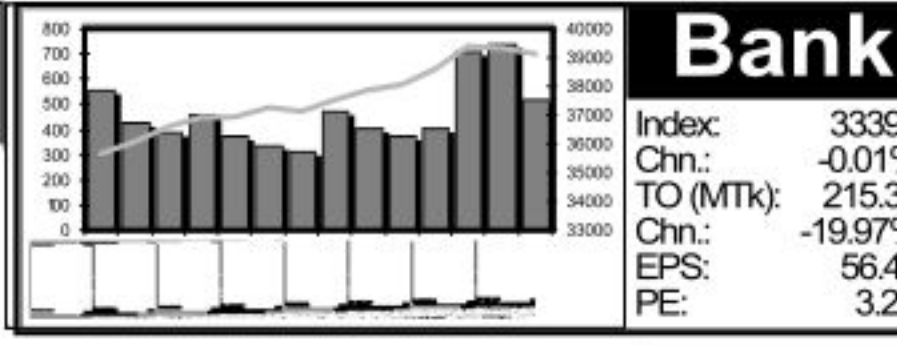
Table of top combined turnover leaders including LafargeS Cement-Z, Grameenphone-A, and Square Pharma -A.

Sectoral Turnover Summary

Table of sectoral turnover summary for various sectors like Bank, NBFI, Investment, Engineering, etc.

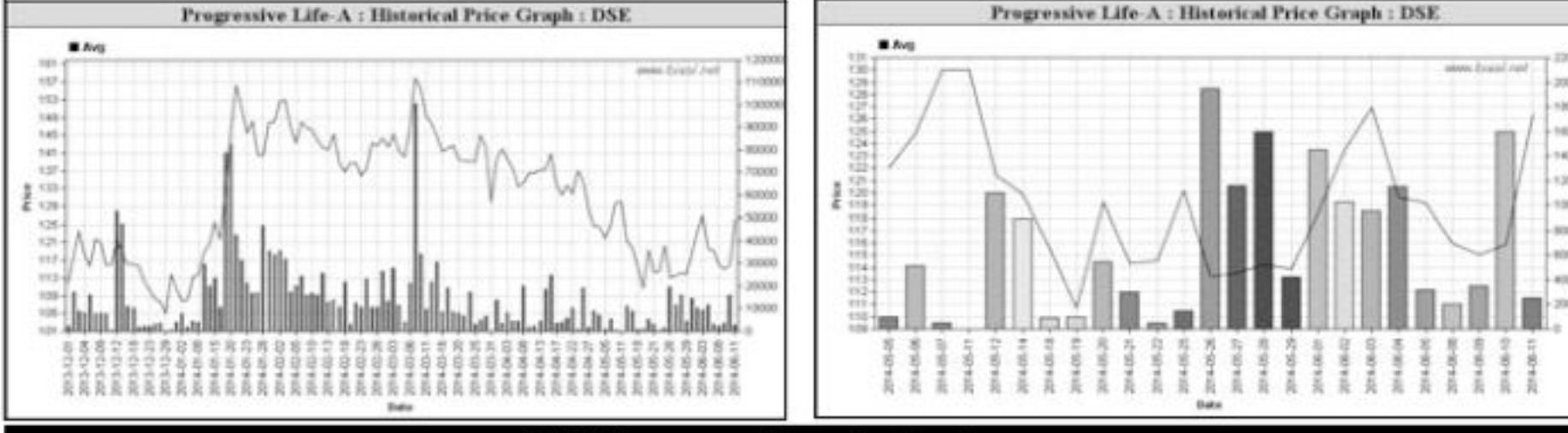
Sectoral P/E & EPS

Table of sectoral P/E and EPS ratios for various sectors.



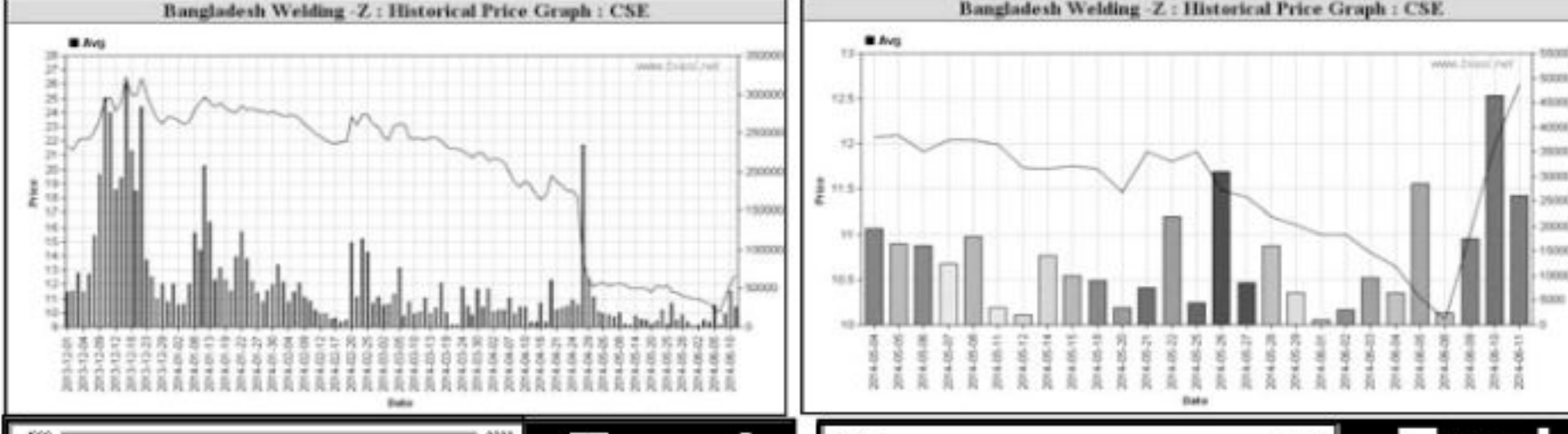
Capital Gainers

Table of top capital gainers from the Dhaka Stock Exchange.



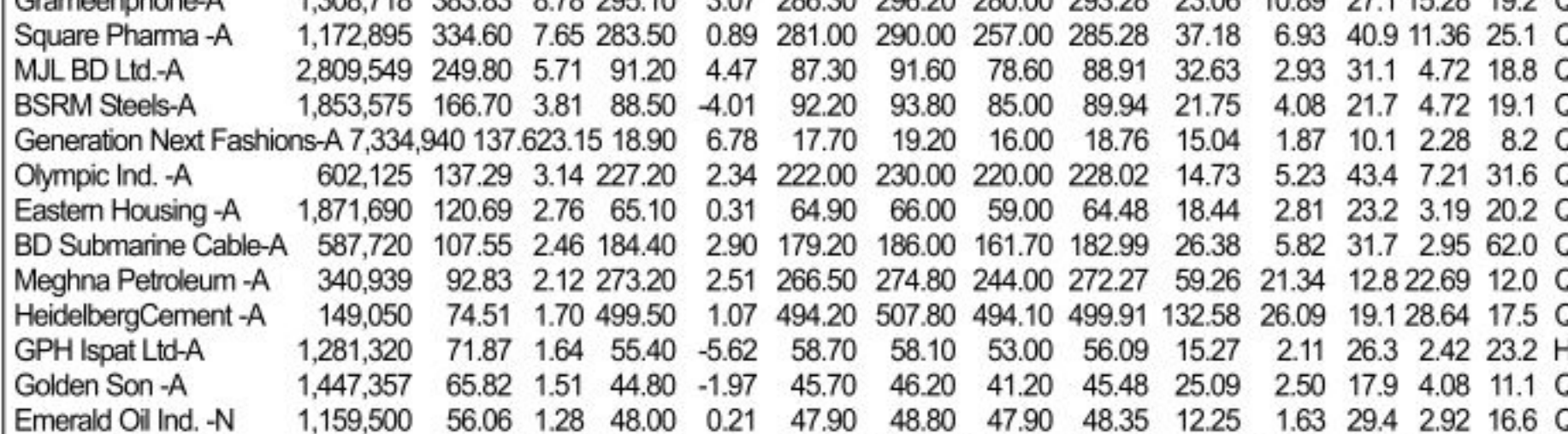
Chittagong Stock Exchange

Table of top capital gainers from the Chittagong Stock Exchange.



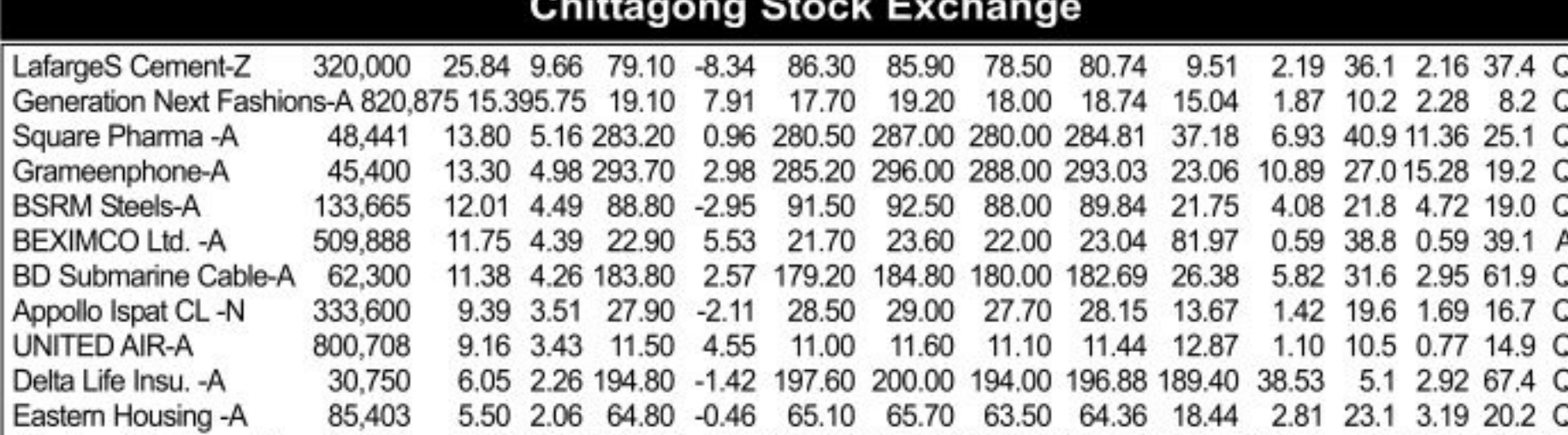
Capital Losers

Table of top capital losers from the Dhaka Stock Exchange.



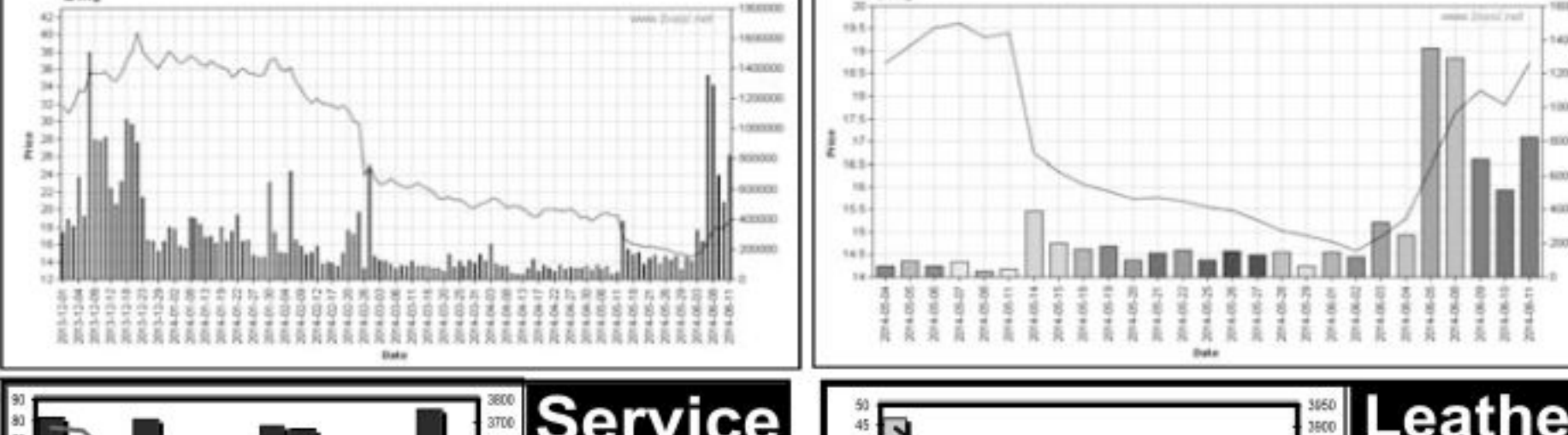
Chittagong Stock Exchange

Table of top capital losers from the Chittagong Stock Exchange.



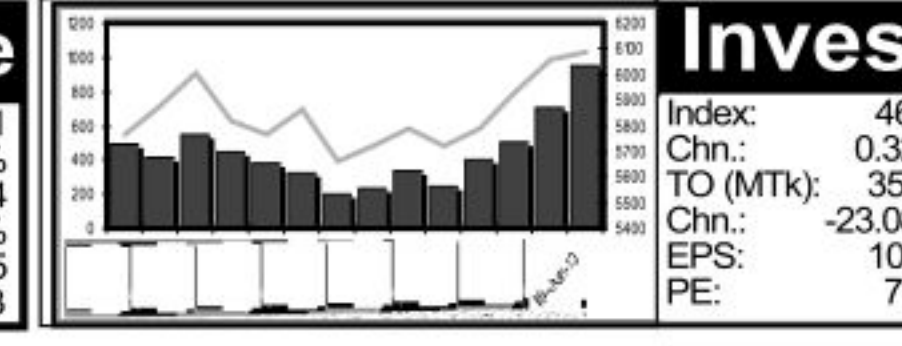
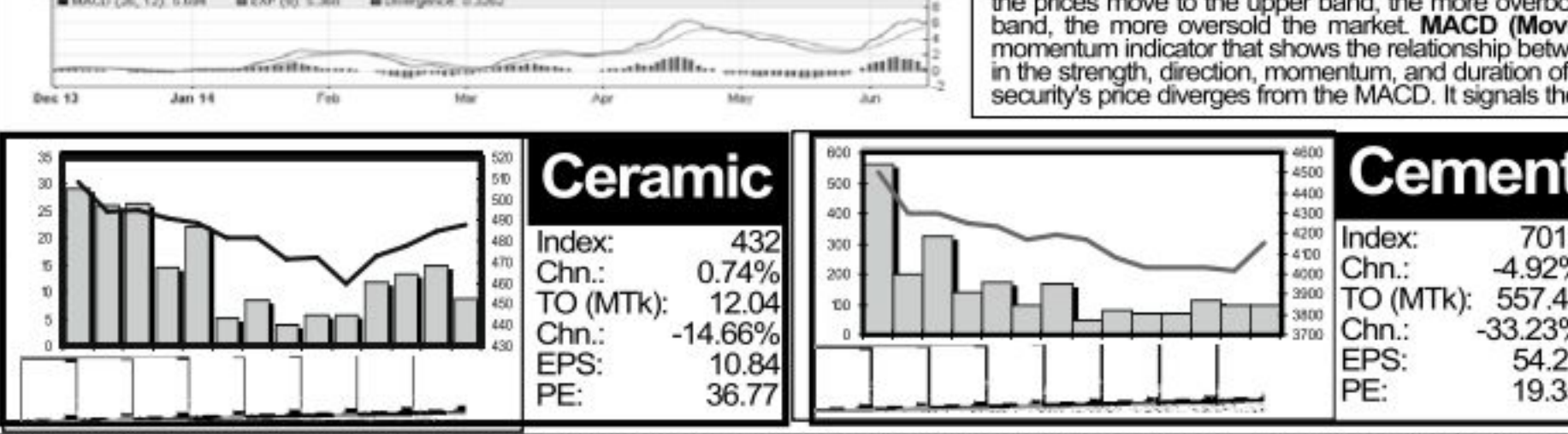
Turnover Leaders

Table of top turnover leaders from the Dhaka Stock Exchange.



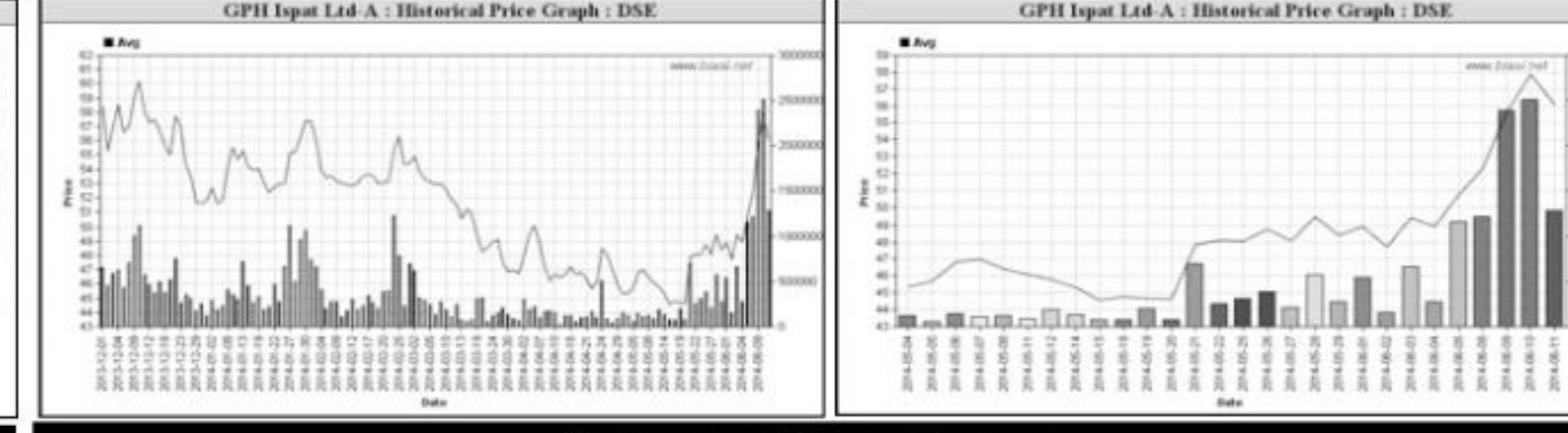
Chittagong Stock Exchange

Table of top turnover leaders from the Chittagong Stock Exchange.



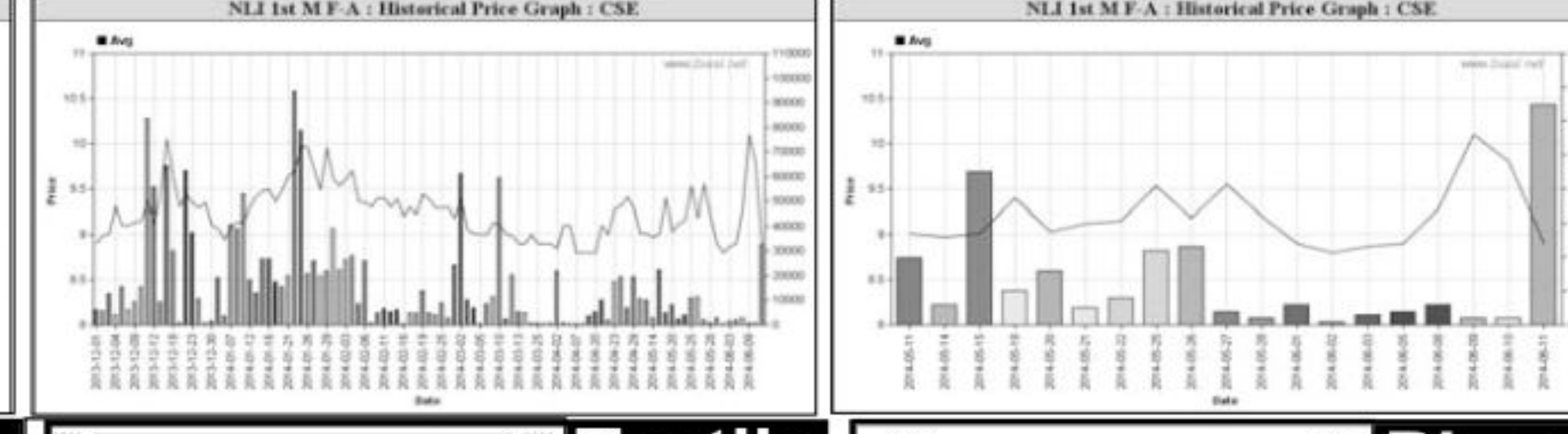
Market Cap. Leader

Table of top market capitalization leaders from the Dhaka Stock Exchange.



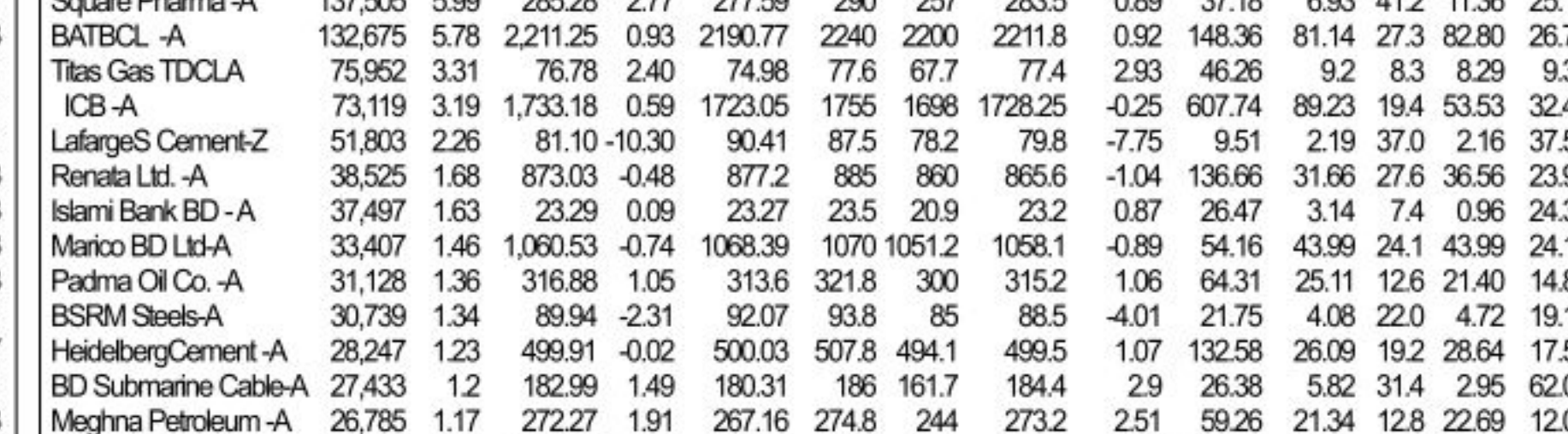
Chittagong Stock Exchange

Table of top market capitalization leaders from the Chittagong Stock Exchange.



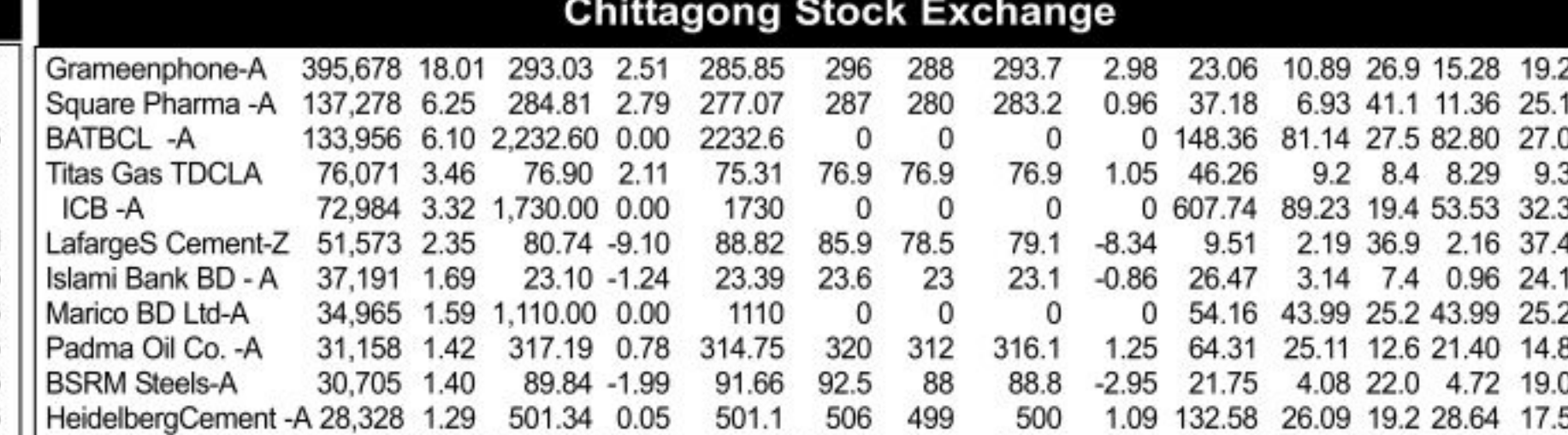
Market Cap. Leader

Table of top market capitalization leaders from the Chittagong Stock Exchange.



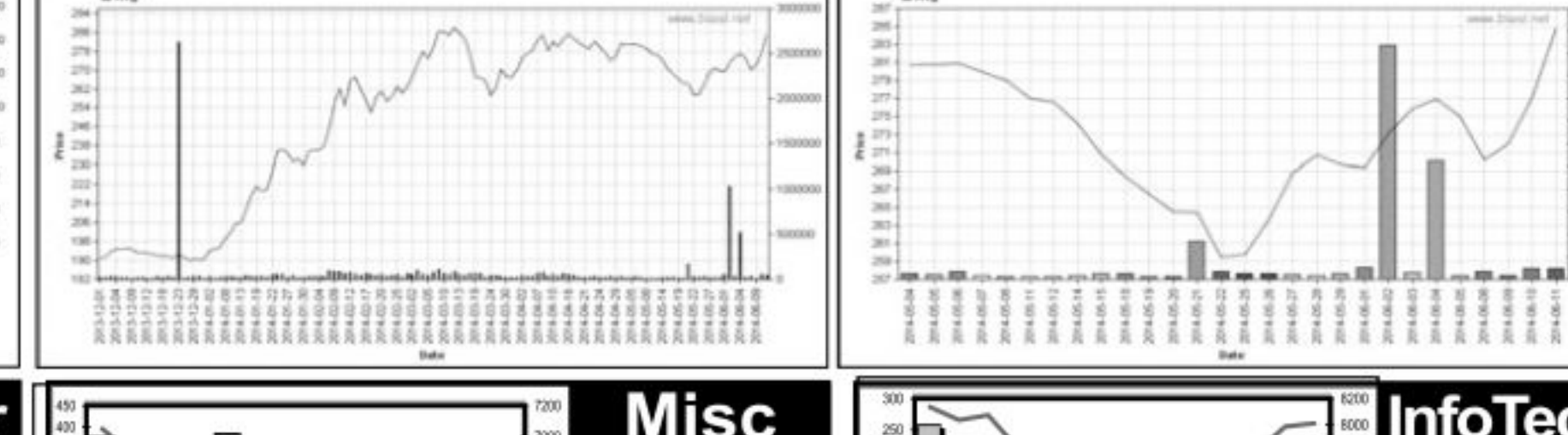
Chittagong Stock Exchange

Table of top market capitalization leaders from the Chittagong Stock Exchange.



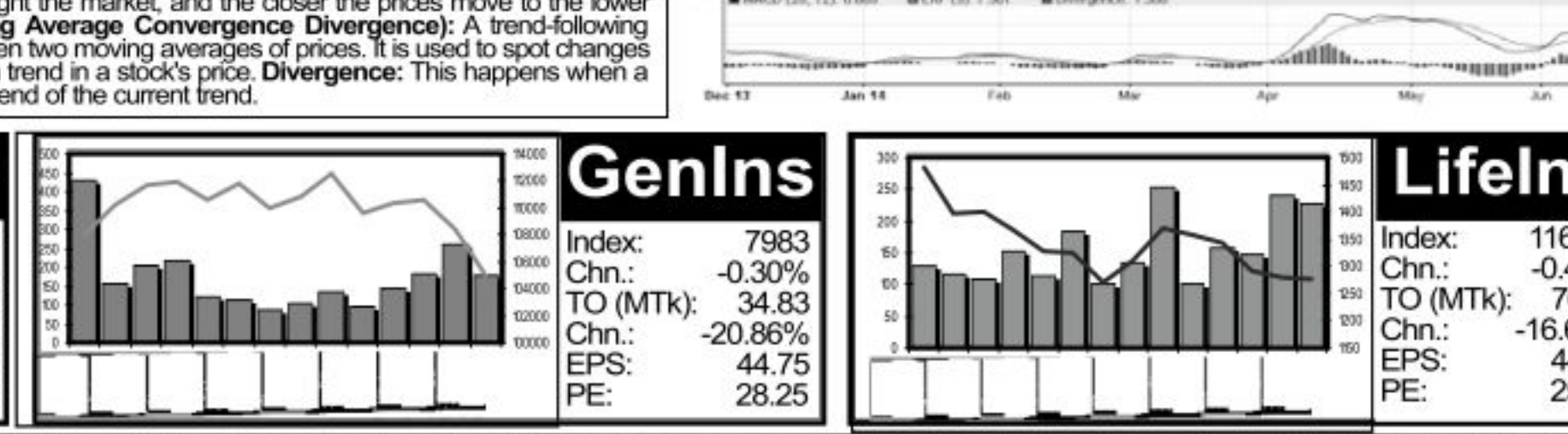
Textile

Table of top market capitalization leaders from the Dhaka Stock Exchange.



Chittagong Stock Exchange

Table of top market capitalization leaders from the Chittagong Stock Exchange.



What you should know to buy or sell

Investors follow many calculations of corporate performance when deciding if a stock is undervalued or overvalued. These range from the simple price-earnings ratio, or P/E, to far more technical ways...

Notes: Capital Gainer / Loser tables are prepared on the basis of the close price change of the traded issues. 'Clo' is the Closing Price of the Day. 'Chn %' indicates the price difference in percentage. 'Avg' prices indicate weighted average prices of all transactions of the last day...