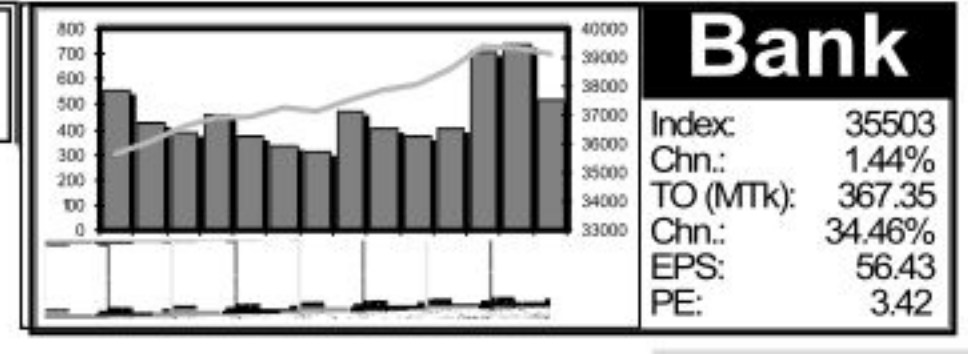
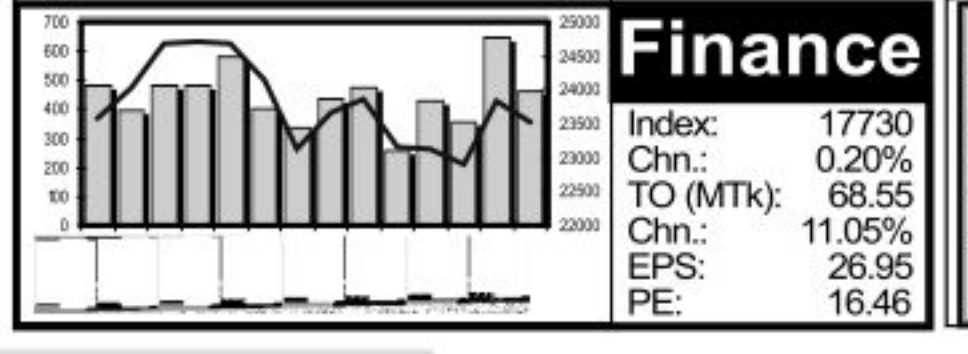


Capital Market Highlights: May 27 2014

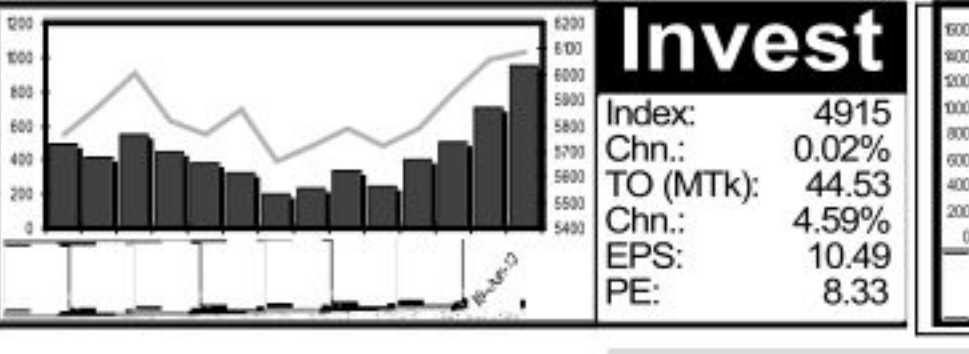
INDEX: Broad Index, DSE SHARIAH, DSE 30, CSE All Share, CSE CSCX, CSE 30. Turnover: DSE, CSE. Market Cap.: DSE, CSE. Key Features - May 27, 2014: Indicators, Turnover, No. of Contract, Traded Issues, Issue Gain/Loss, Market Cap. Equity.



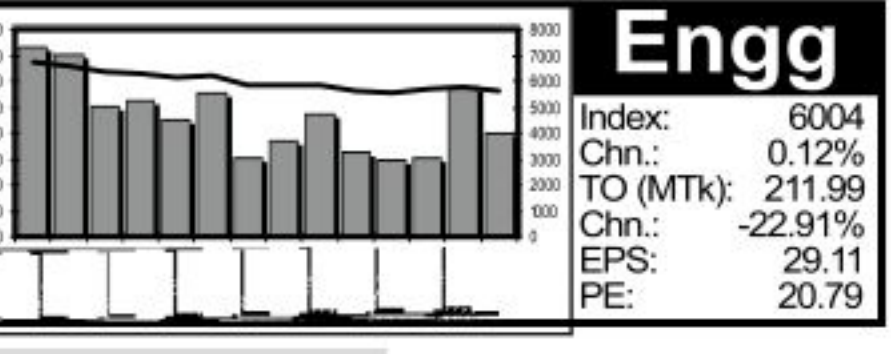
Bank Index: 35503, Chn: 1.44%, TO (MTK): 367.35, Cn: 34.46%, EPS: 56.43, PE: 3.42



Finance Index: 17730, Chn: 0.20%, TO (MTK): 68.55, Cn: 11.05%, EPS: 26.95, PE: 16.46



Invest Index: 4915, Chn: 0.02%, TO (MTK): 44.53, Cn: 4.59%, EPS: 10.49, PE: 8.33



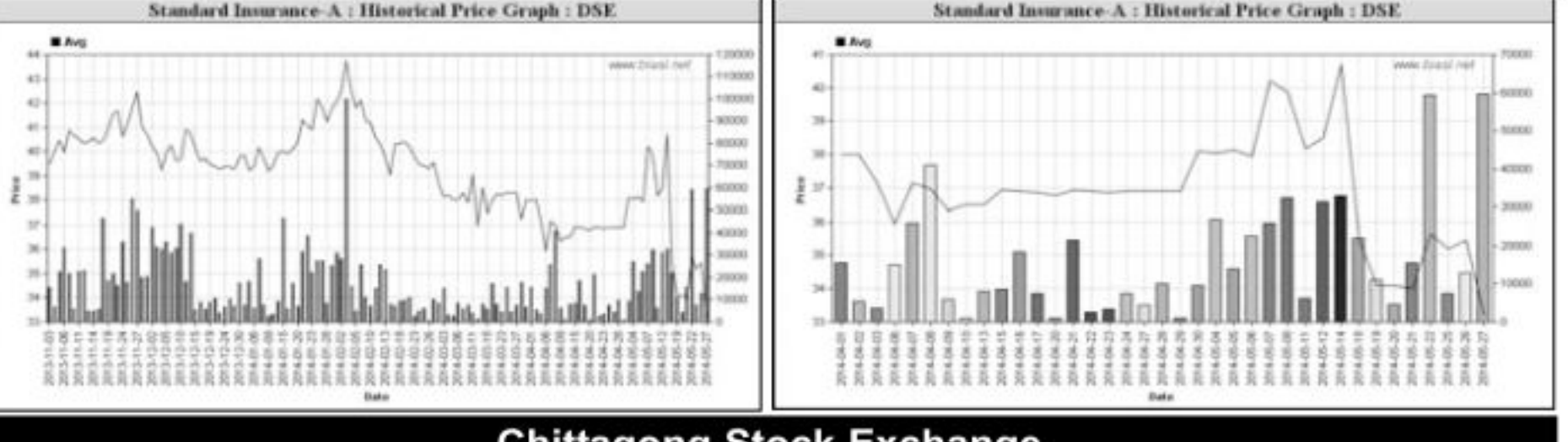
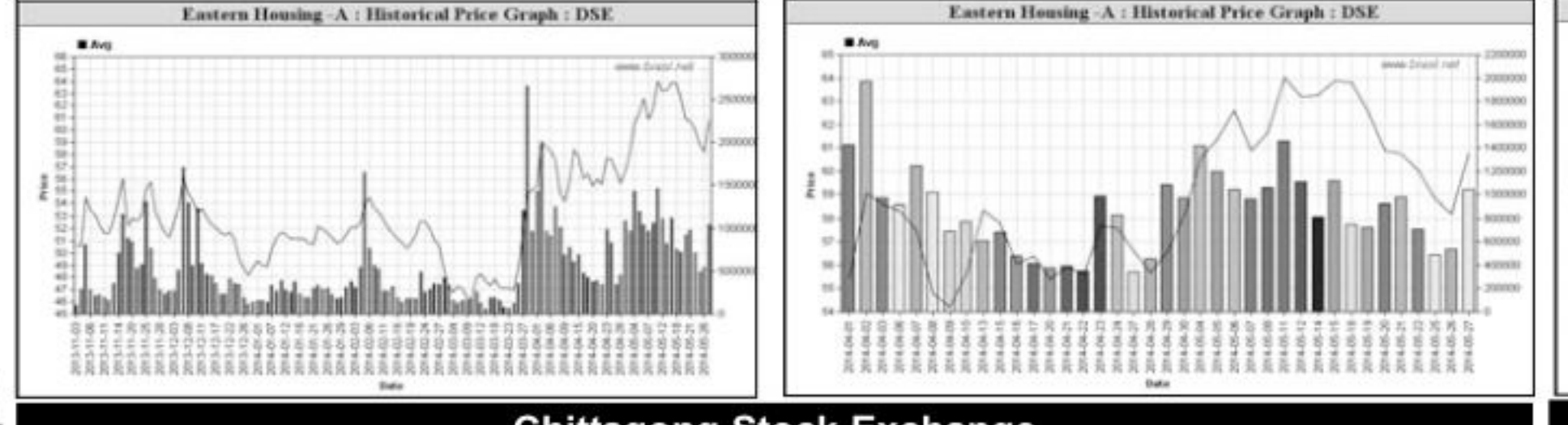
Engg Index: 6004, Chn: 0.12%, TO (MTK): 211.99, Cn: -22.91%, EPS: 29.11, PE: 20.79

Capital Gainers

Table of Capital Gainers at Dhaka Stock Exchange with columns for Company, Price Chn. (%), Price Scale, Tover, Audited, Latest.

Capital Losers

Table of Capital Losers at Dhaka Stock Exchange with columns for Company, Price Chn. (%), Price Scale, Tover, Audited, Latest.

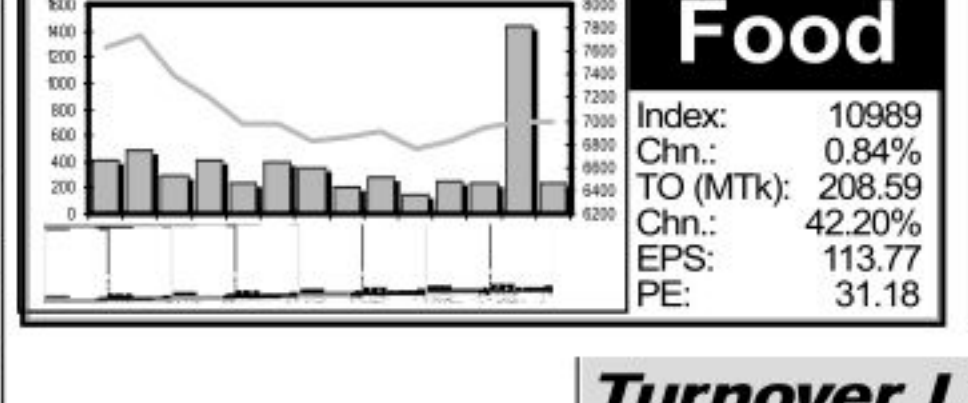
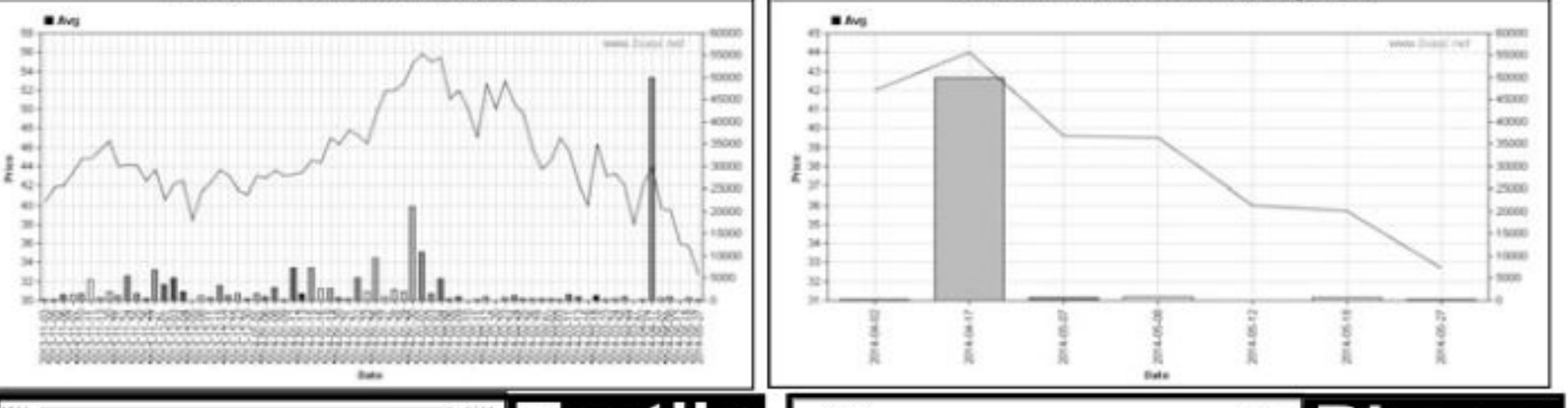
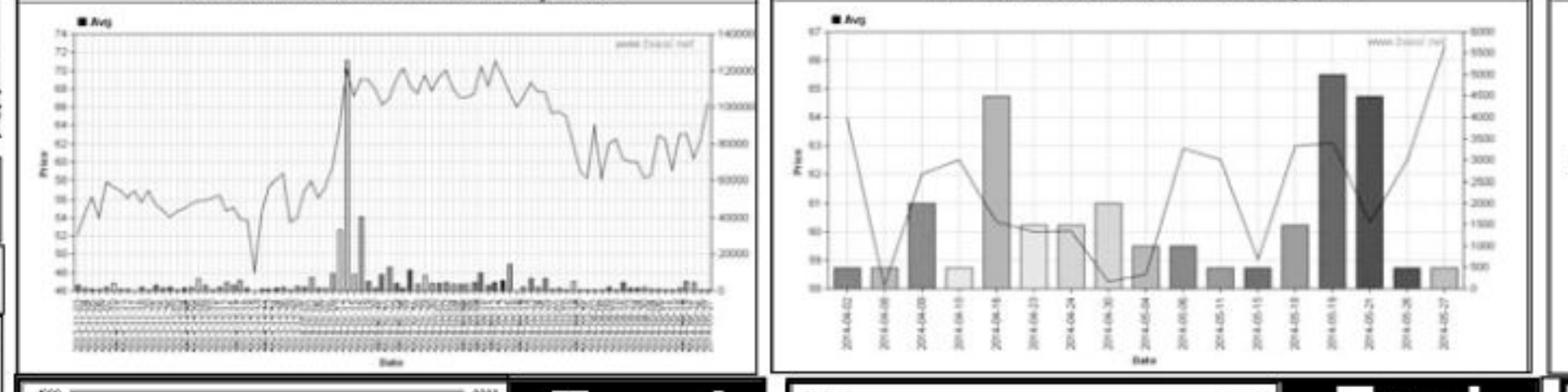


Chittagong Stock Exchange

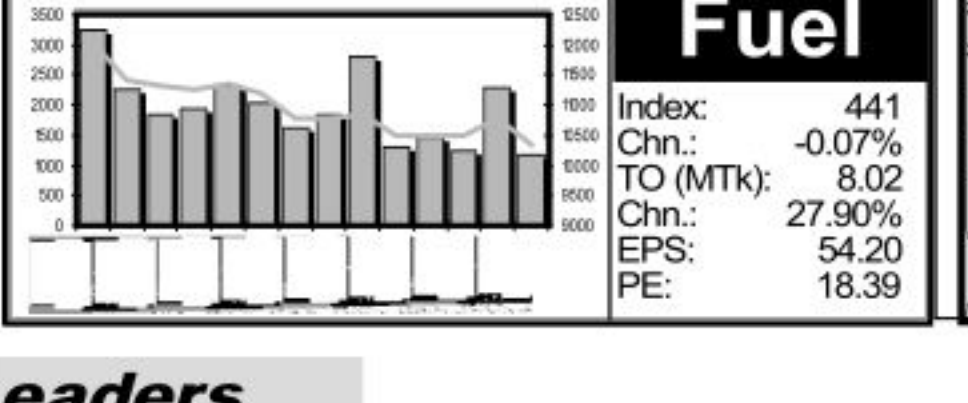
Table of Chittagong Stock Exchange with columns for Company, Price Chn. (%), Price Scale, Tover, Audited, Latest.

Chittagong Stock Exchange

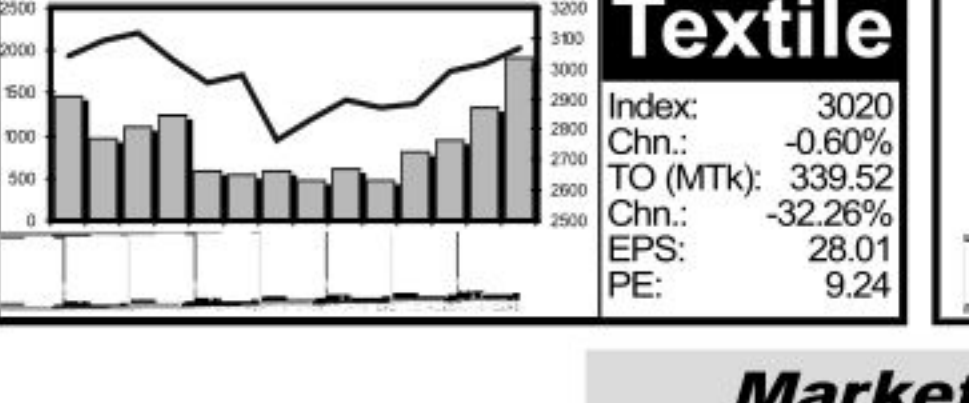
Table of Chittagong Stock Exchange with columns for Company, Price Chn. (%), Price Scale, Tover, Audited, Latest.



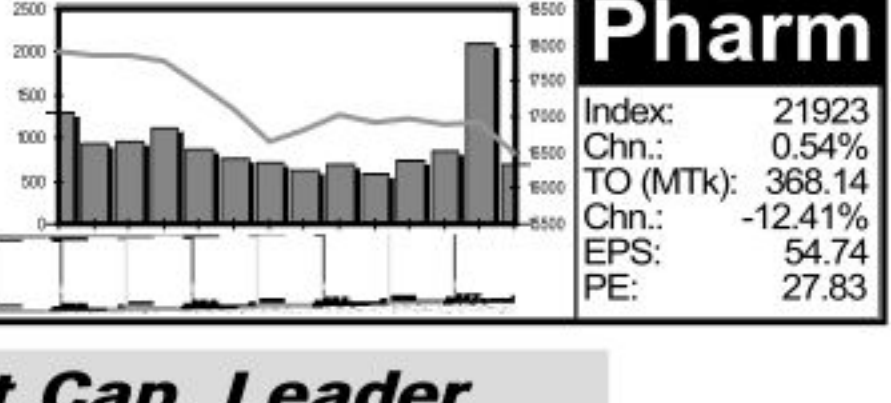
Food Index: 10989, Chn: 0.84%, TO (MTK): 208.59, Cn: 42.20%, EPS: 113.77, PE: 31.18



Fuel Index: 441, Chn: -0.07%, TO (MTK): 8.02, Cn: 27.90%, EPS: 54.20, PE: 18.39



Textile Index: 3020, Chn: -0.60%, TO (MTK): 339.52, Cn: -32.26%, EPS: 28.01, PE: 9.24



Pharm Index: 21923, Chn: 0.54%, TO (MTK): 368.14, Cn: -12.41%, EPS: 54.74, PE: 27.83

Turnover Leaders

Table of Turnover Leaders at Dhaka Stock Exchange with columns for Company, Vol., Value, % of Total, Average Price.

Market Cap. Leader

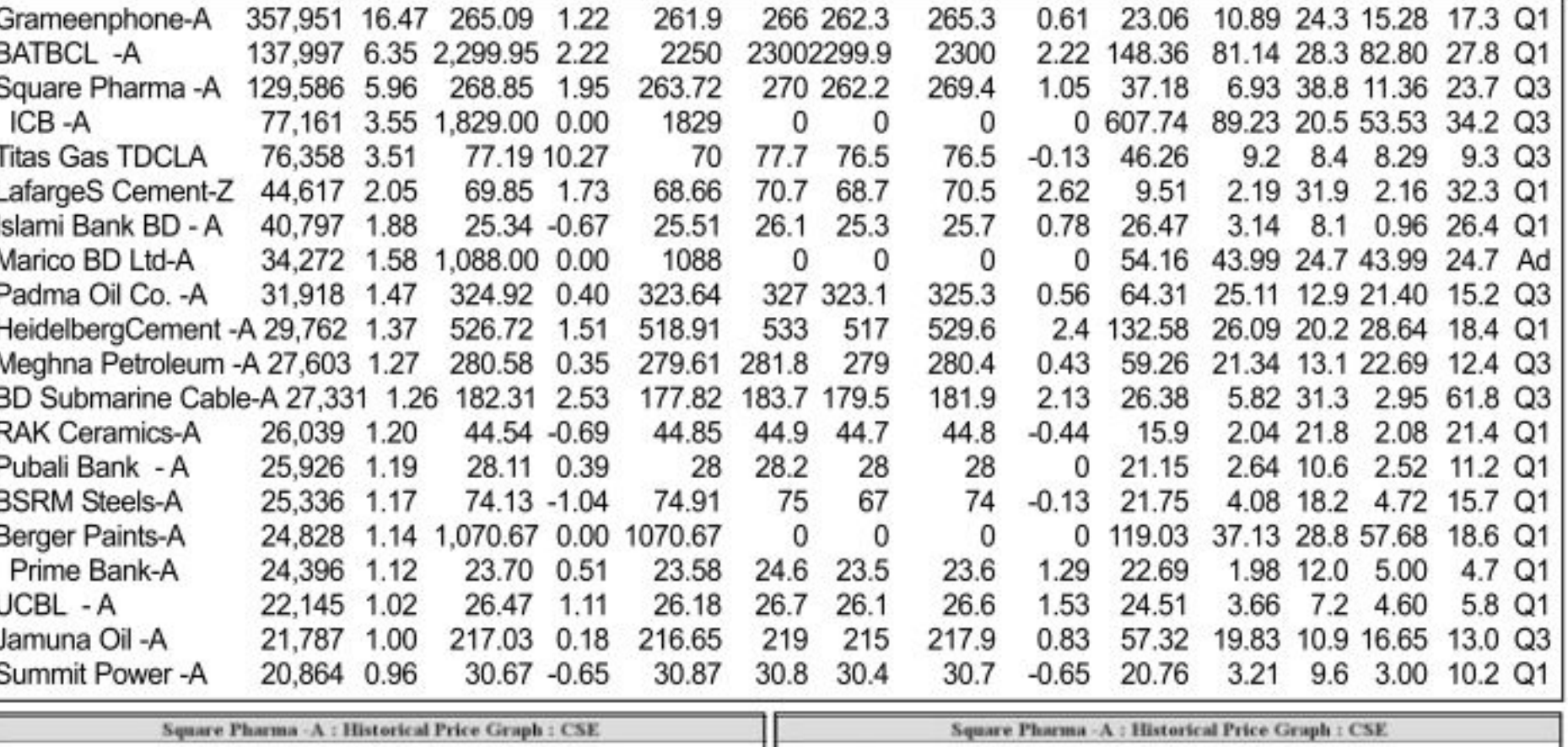
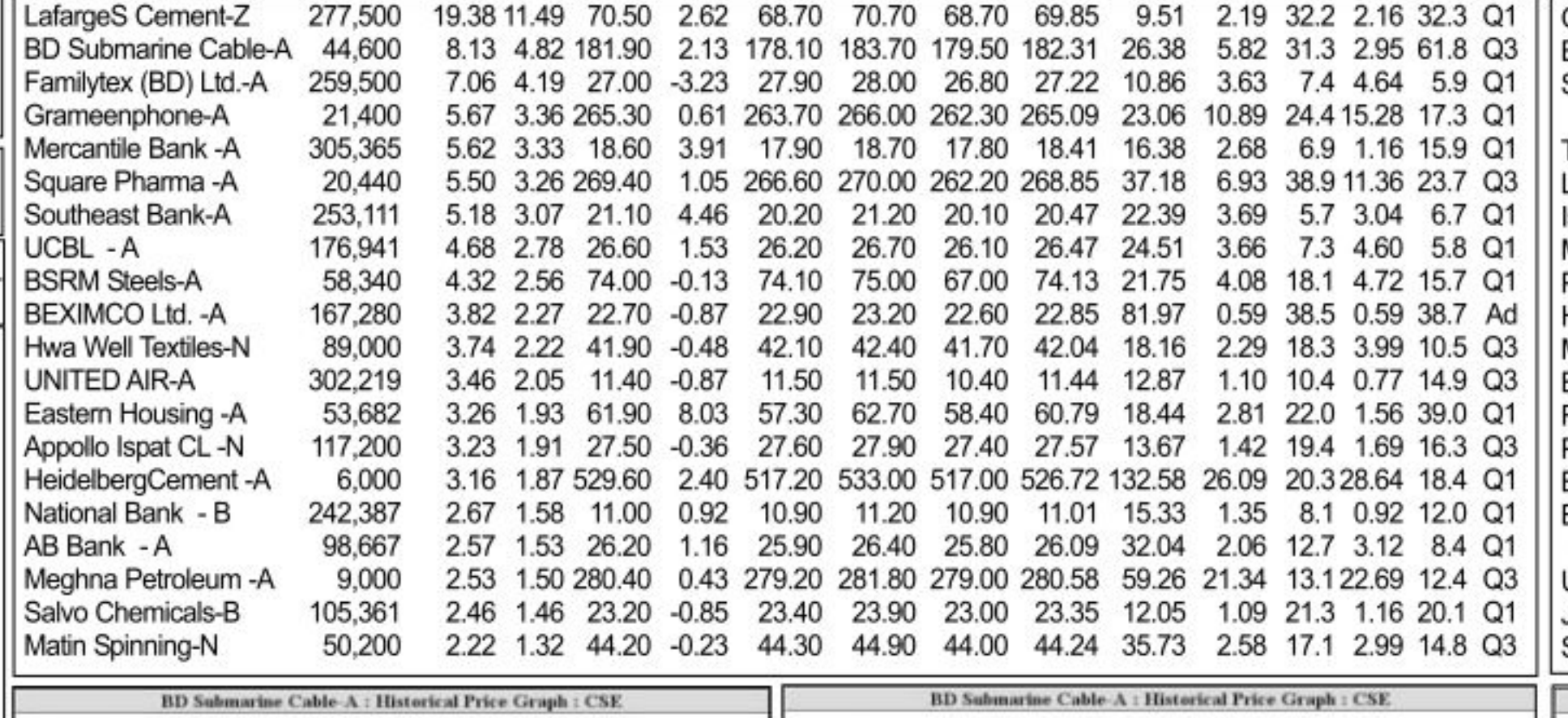
Table of Market Cap. Leader at Dhaka Stock Exchange with columns for Company, Market Cap. % of Total, Price Scale, Audited, Latest.

Chittagong Stock Exchange

Table of Chittagong Stock Exchange with columns for Company, Vol., Value, % of Total, Average Price.

Chittagong Stock Exchange

Table of Chittagong Stock Exchange with columns for Company, Market Cap. % of Total, Price Scale, Audited, Latest.



Sectoral Turnover Summary

Table of Sectoral Turnover Summary with columns for Sector, DSE, CSE, Total.

Chittagong Stock Exchange

Table of Chittagong Stock Exchange with columns for Company, Vol., Value, % of Total, Average Price.

Chittagong Stock Exchange

Table of Chittagong Stock Exchange with columns for Company, Market Cap. % of Total, Price Scale, Audited, Latest.

Sectoral P/E & EPS

Table of Sectoral P/E & EPS with columns for Sector, P/E, CSE, DSE, EPS(%) CSE.

Service Sector Index Chart

Service Index: 2379, Chn: 0.73%, TO (MTK): 70.26, Cn: 86.50%, EPS: 18.94, PE: 19.18

Leather Sector Index Chart

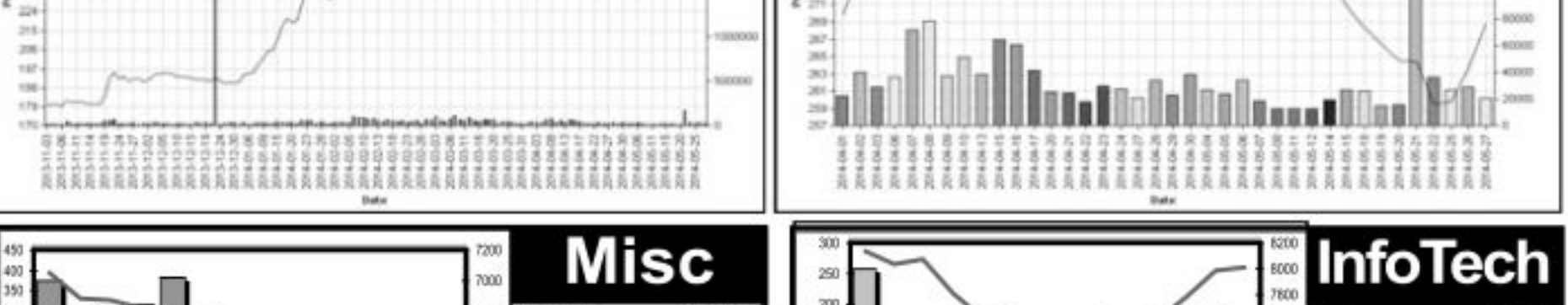
Leather Index: 6059, Chn: 2.73%, TO (MTK): 72.31, Cn: 51.91%, EPS: 123.30, PE: 16.94

Misc Sector Index Chart

Misc Index: 7047, Chn: 0.86%, TO (MTK): 31.16, Cn: -26.14%, EPS: 7.19, PE: 42.29

InfoTech Sector Index Chart

InfoTech Index: 6503, Chn: 0.09%, TO (MTK): 15.17, Cn: 3.35%, EPS: 12.74, PE: 15.97



Ceramic Sector Index Chart

Ceramic Index: 441, Chn: -0.07%, TO (MTK): 8.02, Cn: 27.90%, EPS: 10.84, PE: 37.68

Cement Sector Index Chart

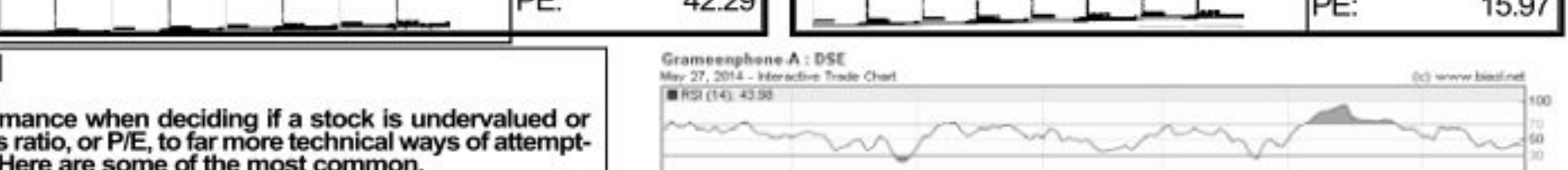
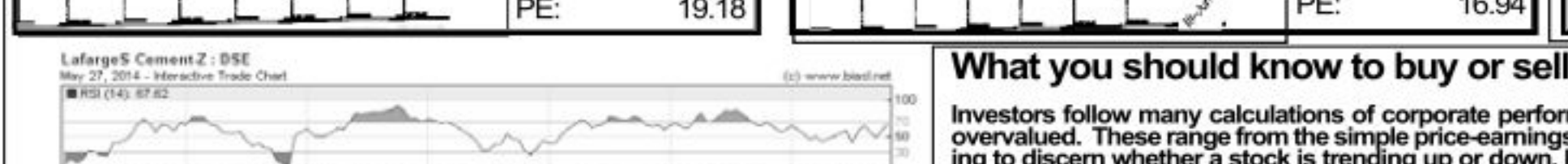
Cement Index: 6674, Chn: 2.09%, TO (MTK): 300.07, Cn: 49.68%, EPS: 54.20, PE: 18.39

Genlms Sector Index Chart

Genlms Index: 8231, Chn: 0.15%, TO (MTK): 31.16, Cn: -11.76%, EPS: 44.75, PE: 28.13

Lifeln Sector Index Chart

Lifeln Index: 118009, Chn: -1.27%, TO (MTK): 96.89, Cn: -5.52%, EPS: 26.77, PE: 44.65



What you should know to buy or sell. Investors follow many calculations of corporate performance when deciding if a stock is undervalued or overvalued. This ranges from the simple price-earnings ratio, or P/E, to far more technical ways of attempting to discern whether a stock is trending up or down. Here are some of the most common.

What you should know to buy or sell. Investors follow many calculations of corporate performance when deciding if a stock is undervalued or overvalued. This ranges from the simple price-earnings ratio, or P/E, to far more technical ways of attempting to discern whether a stock is trending up or down. Here are some of the most common.

Prepared exclusively for Daily Star by Business Information Automation Service Line (BIASL) on the basis of information collected from daily stock quotations and audited reports of the listed companies. High level of caution has been taken to collect and present the above information and data. The publisher will not take any responsibility if any body uses this information and data for his/her investment decision. For any query please email to biasl@bol-online.com or send SMS to 01552153562 or go to www.biasl.net