

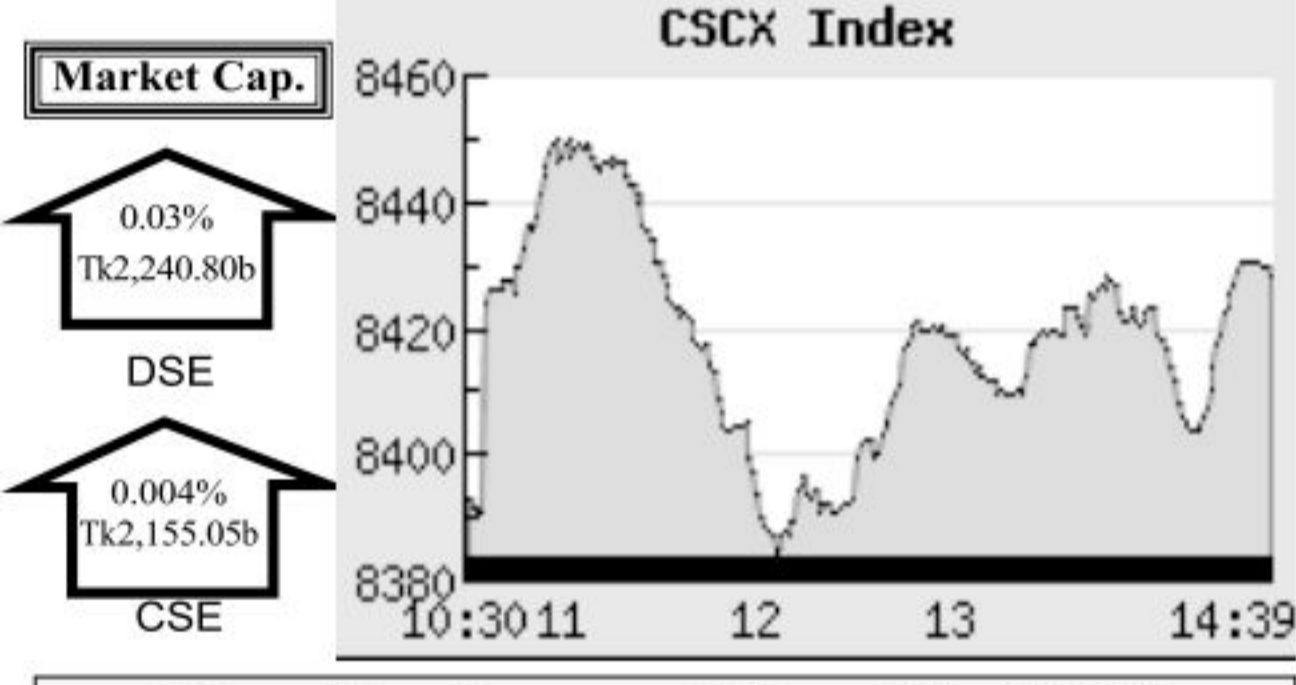
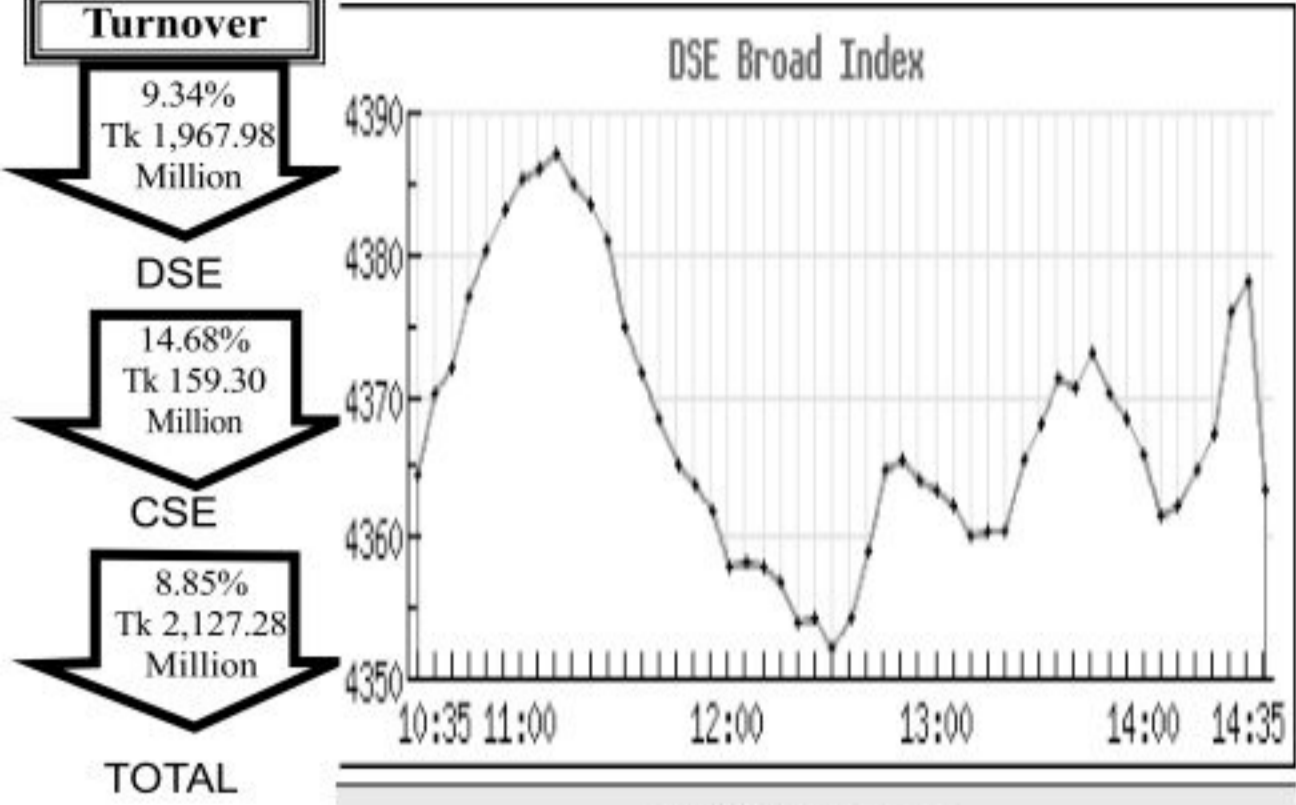
Capital Market Highlights:

INDEX May 20 2014

INDEX	DSE SHARIAH	DSE 30	
DSE	4363.49783 (-) 0.02%	971.88109 (+) 0.05%	1589.82224 (+) 0.43%
INDEX	CSE CSCX	CSE 30	
CSE	13486.5851 (-) 0.10%	8402.1363 (-) 0.12%	11087.2463 (+) 0.02%

Turnover

DSE	9.34% Tk 1,967.98 Million
CSE	14.68% Tk 1,593.30 Million
TOTAL	8.85% Tk 2,127.28 Million



Key Features - May 20, 2014

Indicators	DSE	CSE	TOTAL
Turnover (Million Taka)	1,967.98	159.30	2,127.28
Turnover (Volume)	50,363,138	4,466,490	54,829,628
No. of Contract	54,483	6,977	61,460
Traded Issues	290	196	290
Issue Gain (Avg. Price Basis)	76	59	76
Issue Loss (Avg. Price Basis)	208	128	208
Unchanged Issue (Avg. Price Basis)	6	8	6
Market Cap. Equity (Billion Tk.)	2,240.80	2,155.05	2,240.80
Market Cap. Equity (Billion US\$)	27.16	26.12	27.16

Combined Turnover Leaders

Company	Volume (Share)	Value (M. Taka)	% of Total	Average Price
Hwa Well Textiles-N	2493000	105.85	5.00	42.46
LafargeS Cement-Z	1414500	94.47	4.46	66.79
Grameenphone-A	288168	75.28	3.55	261.25
Square Pharma-A	254976	67.42	3.18	264.41
Delta Life Insu. -A	304210	58.77	2.77	193.18
MJL BD Ltd.-A	707580	58.75	2.77	83.03
Eastern Housing -A	939769	57.20	2.70	60.87
Matin Spinning-N	1153200	52.83	2.49	45.81
HeidelbergCement -A	106980	52.66	2.49	492.23
Active Fine Chem.-A	756025	51.50	2.43	68.12
AFC AgroBiotech-N	840000	49.22	2.32	58.59
UCBL -A	1519725	39.46	1.86	25.97
Orion Pharma-N	766440	39.27	1.85	51.24
Padma Oil Co. -A	111495	36.35	1.72	326.02
Meghna Petroleum -A	118452	33.27	1.57	280.87
Emerald Oil Ind. -N	579000	31.65	1.49	54.66
BD Submarine Cable-A	171067	31.09	1.47	181.75
Apex Footwear-A	84500	29.35	1.39	347.37
Central Pharm-A	698500	27.04	1.28	38.71
Olympic Ind. -A	111750	25.82	1.22	231.02
Golden Son -A	555407	24.66	1.16	44.4
CVO PetroChem RL-Z	30142	24.24	1.14	804.19
Beximco Pharma -A	616773	23.98	1.13	38.88
BD Building Systems -A	338225	21.34	1.01	63.1
Southeast Bank-A	1062635	21.05	0.99	19.81
BSC-A	37295	20.17	0.95	540.84
Appollo Ispat CL -N	730800	19.18	0.91	26.24
Envoy Textiles Ltd-N	346400	17.39	0.82	50.19
Argon Denims Limited-A	302654	17.31	0.82	57.18
LankaBangla Fin. -A	374397	17.00	0.80	45.41

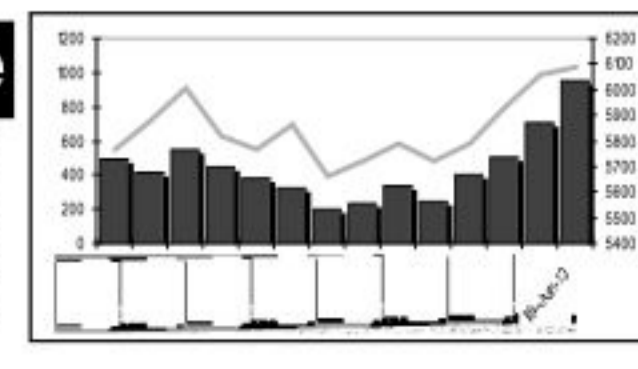
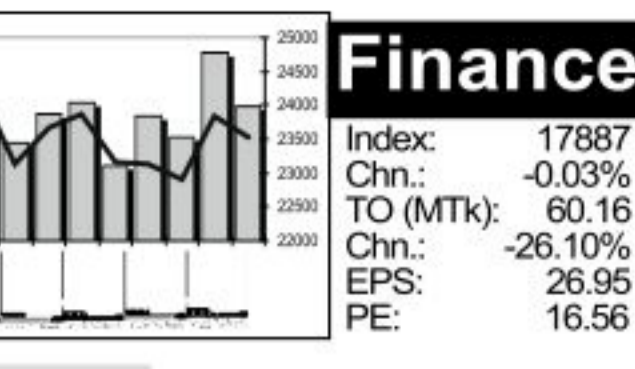
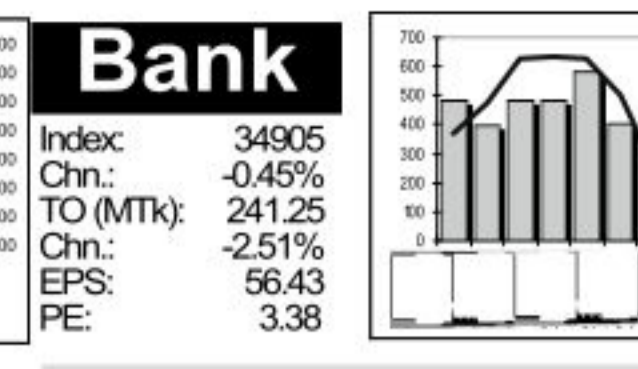
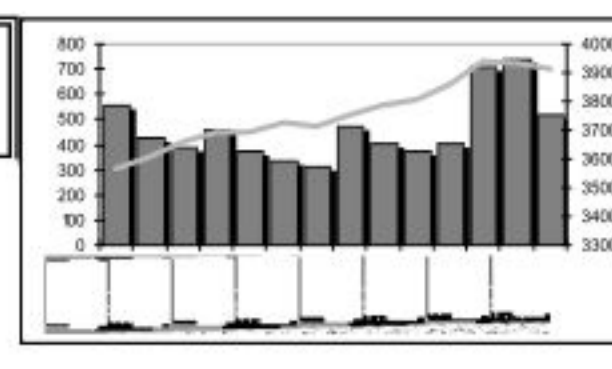
Sectoral Turnover Summary

Sector	DSE		CSE		Total	
	Mill. (Tk)	%	Mill. Tk.	%	Mill. Tk.	%
Bank	223.76	11.37	17.49	8.37	241.25	11.08
NBFI	54.90	2.79	5.26	2.52	60.16	2.76
Investment	67.67	3.44	1.78	0.85	69.45	3.19
Engineering	144.39	7.34	13.89	6.65	158.28	7.27
Food & Allied	103.26	5.25	15.49	7.42	118.76	5.46
Fuel & Power	177.81	9.03	16.59	7.94	194.39	8.93
Jute	0.89	0.04	0.00	0.00	0.89	0.04
Textile	303.78	15.44	41.50	19.87	345.28	15.86
Pharma & Chemical	344.16	17.49	19.95	9.55	364.11	16.73
Paper & Packaging	0.12	0.01	16.55	7.92	16.67	0.77
Service	60.26	3.06	1.19	0.57	61.45	2.82
Leather	41.70	2.12	18.92	9.06	60.62	2.78
Ceramic	6.68	0.34	0.93	0.44	7.60	0.35
Cement	166.63	8.47	13.83	6.63	180.47	8.29
Information Technology	10.33	0.52	1.00	0.48	11.33	0.52
General Insurance	32.62	1.66	0.35	0.17	32.97	1.51
Life Insurance	77.10	3.92	5.43	2.60	82.53	3.79
Telecom	97.11	4.93	9.27	4.44	106.38	4.89
Travel & Leisure	12.58	0.64	3.98	1.91	16.56	0.76
Miscellaneous	41.88	2.13	5.42	2.60	47.30	2.17
Debtenture	0.35	0.02	0.00	0.00	0.35	0.02

Sectoral P/E & EPS

Sector	P/E		EPS(%)	
	DSE	CSE	DSE	CSE
Bank	3.38	3.37	56.43	56.43
NBFI	16.56	17.05	26.95	27.29
Investment	8.43	8.51	10.49	10.49
Engineering	19.95	19.55	29.11	28.30
Food & Allied	31.15	33.09	113.77	114.59
Fuel & Power	11.60	11.36	64.45	64.45
Textile	9.31	8.83	28.12	28.11
Pharma & Chemical	27.32	27.10	54.74	46.91
Paper & Printing	29.63	31.07	8.39	8.92
Service	18.82	18.78	18.94	18.94
Leather	16.82	18.07	123.30	148.41
Ceramic	38.11	38.22	10.84	10.84
Cement	17.56	17.51	54.20	54.20
IT	15.81	15.78	12.74	12.74
General Insurance	11.67	11.55	28.22	29.42
Life Insurance	27.32	28.47	44.75	44.75
Telecom	24.40	24.40	103.81	103.81
Travel & Leisure	14.01	15.86	20.95	19.59
Miscellaneous	43.14	44.16	7.19	6.91
Stock Exchanges	10.19	10.03	46.99	46.82

Prepared exclusively for Daily Star by Business Information Automation Service Line (BIASL) on the basis of information collected from daily stock quotations and audited reports of the listed companies. High level of caution has been taken to collect and present the above information and data. The publisher will not take any responsibility for any body uses this information and data for his/her investment decision. For any query please email to biasl@bol-online.com or send SMS to 01552153562 or go to www.biasl.net



Capital Gainers

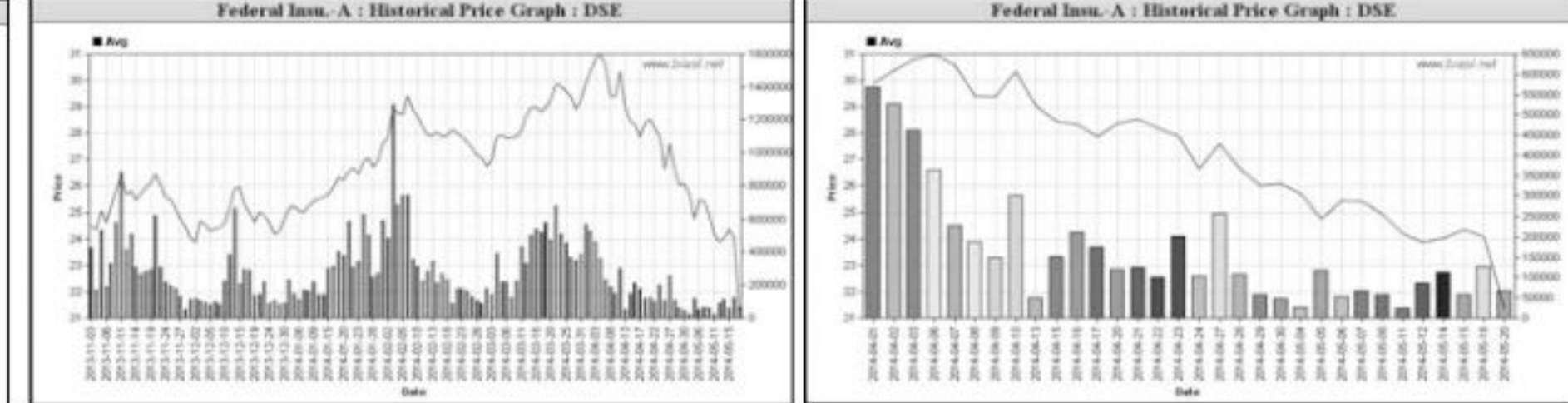
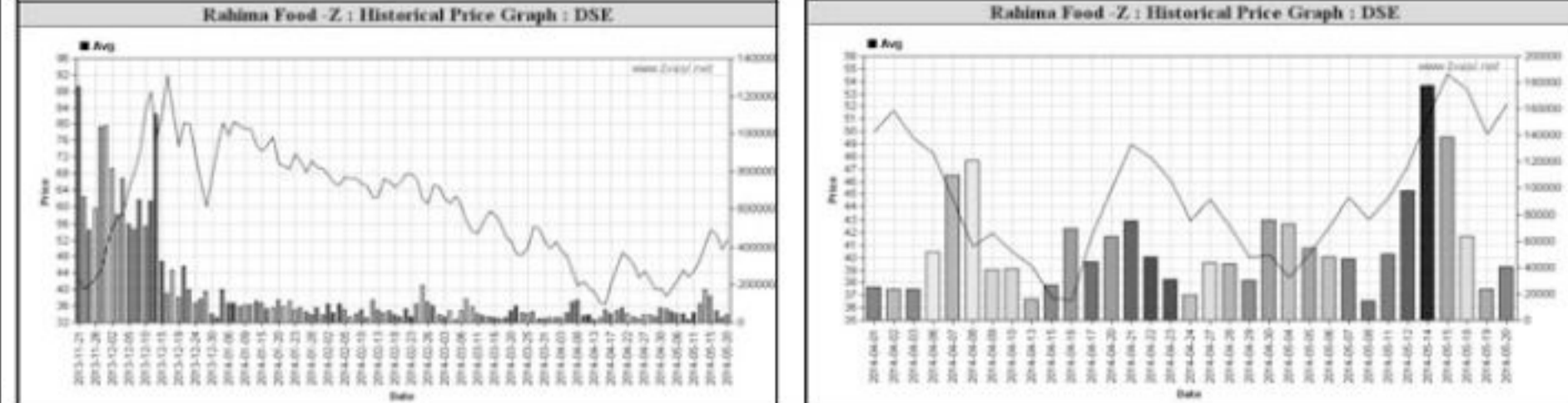
Dhaka Stock Exchange

Company	Price Chn. (%)		Price Scale		Tover	Audited	Latest								
	Clo	Avg.	D Hi	D Lo											
Rahima Food -Z	8.37	4.86	52.17	53.10	53.90	50.00	92.9	14.0	2.139	4.45	0.52	100.3	-1.01	-ve	Q3
Progressive Life-A	7.68	7.74	119.27	119.20	120.90	110.00	160.6	84.1	0.656	31.45	2.30	51.9	2.30	51.9	Ad
Samata Leather-R	5.61	6.09	30.13	30.10	30.90	28.70	38.9	10.7	0.226	12.93	0.22	137.0	0.69	334.8	Q3
Beximco Pharma-A	5.36	2.42	38.89	39.30	40.00	35.00	64.0	35.0	22.098	52.81	3.82	10.2	30.36	10.8	Q1
Hwa Well Textiles-N	5.11	2.12	42.47	43.20	43.80	41.30	45.8	35.0	89.278	18.16	2.29	18.5	0.00		
BD, Thai Alum -B	5.07	3.21	22.49	22.80	23.10	19.80	19.80	17.4	5.710	37.76	-0.13	-ve	0.84	26.8	Q1
Delta Life Insu. -A	4.16	1.64	193.08	195.10	196.90	187.00	8500.0	187.0	53.832	189.8	38.53	5.0	2.92	66.1	Q3
HeidelbergCement-A	3.99	1.17	492.21	500.10	508.50	480.00	624.8	251.0	50.171	132.58	26.09	18.9	28.64	17.2	Q1
Rupali Life Insur.-A	3.53	2.43	90.66	91.00	91.40	85.00	138.0	79.0	1.594	31.25	3.75	24.2	5.32	17.0	Q3
BSRM Steels-A	3.43	1.69	65.74	66.40	67.00	60.00	88.0	48.6	13.515	21.75	4.05	16.1	4.77	13.9	Q1

Capital Losers

Dhaka Stock Exchange

Company	Price Chn. (%)		Price Scale		Tover	Audited	Latest								
	Clo	Avg.	D Hi	D Lo											
Federal Insu.-A	-12.50	-11.42	21.34	21.00	22.30	19.90	32.0	19.9	1.449	10.97	1.09	19.6	1.36	15.7	Q1
Northern Jute-Z	-6.90	-6.90	135.00	135.00	135.00	135.00	147.9	16.2	0.054	-18.22	-9.98	-ve	-11.08	-ve	Q3
JMI Syringes MDL-A	-4.42	-5.97	165.04	164.20	170.50	163.00	330.0	35.5	11.333	46.03	2.95	56.1	2.08	79.5	Q1
Ambee Pharma -A	-3.35	-4.11	339.84	337.40	348.00	333.00	366.0	188.0	10.841	26.8	3.95	86.0	3.20	106.2	Q1
Purabi G. Insu.-A	-3.24	-2.73	21.04	20.90	21.70	20.90	31.0	18.7	6.662	13.83	1.55	13.6	0.92	22.9	Q1
Dhaka Ins. Ltd.-A	-3.23	-3.20	30.26	30.00	30.90	28.00	49.1	28.0	1.354	18.26	2.24	13.5	1.84	16.4	Q1
Dhaka Bank -A	-2.89	-4.02	27.05	26.90	27.80	26.70	74.8	26.7	6.560	10.86	3.63	5.5	4.64	9.7	Q1
Familytex (BD) Ltd.-N	-2.54	-1.82	19.41	19.20	20.00	18.00	25.9	15.8	1.748	19.57	3.49	7.6	2.00	9.7	Q1
Legacy Footwear-A	-2.52	-3.98	27.16	27.10	27.70	27.00	51.1	12.4	1.581	17.45	6.62	44.0	0.20	136.3	Q1
United Insur.-A	-2.49	-0.66	36.21	35.20	36.10	34.00	57.6	30.9	0.013	23.42	2.77	13.0	2.44	14.8	Q1



Chittagong Stock Exchange

Company	Price Chn. (%)		Price Scale		Tover	Audited	Latest								
	Clo	Avg.	D Hi	D Lo											
Samata Leather-R	10.00	9.96	30.79	30.80	30.80	30.60	36.8	9.0	1.001	12.93	0.22	140.0	0.09	342.1	Q3
Rahima Food -Z	8.67	5.85	52.45	53.90	53.90	50.10	92.9	14.0	0.105	4.45	0.52	100.9	-1.01	-ve	Q3
Meghna Life Ins. -A	6.61	6.63	121.00	121.00	121.00	121.00	163.0	87.2	0.024	48.87	10.82	11.2	4.16	18.8	Q3
Prime Islami Life -A	6.60	6.57	101.77	101.80	101.00	101.00	133.0	83.6	0.071	27.1	5.51	18.5	4.96	20.3	Q3
BGIC -A	6.41	6.73	24.90	24.90	24.90	24.90	34.8	21.5	0.030	18.61	1.36	18.3	1.36	18.3	Q1
Hwa Well Textiles-N	5.13	2.69	42.37	43.00	43.40	41.10	45.6	36.1	16						