

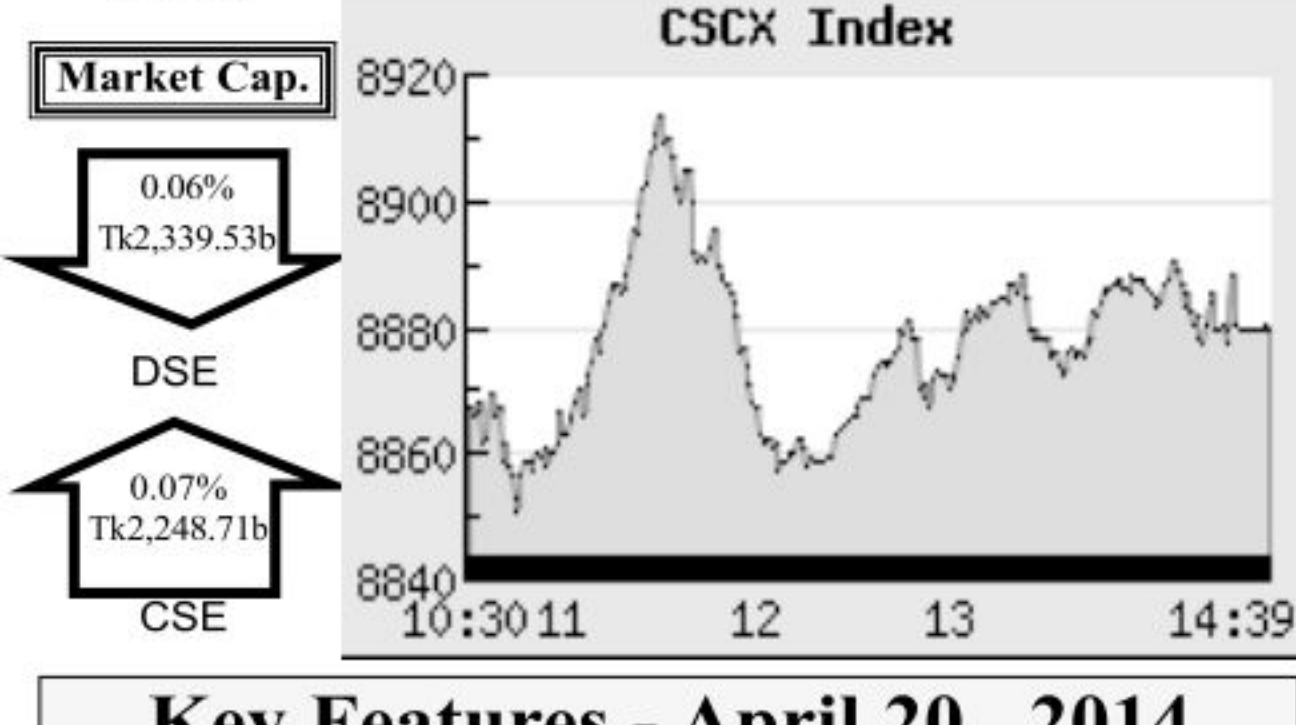
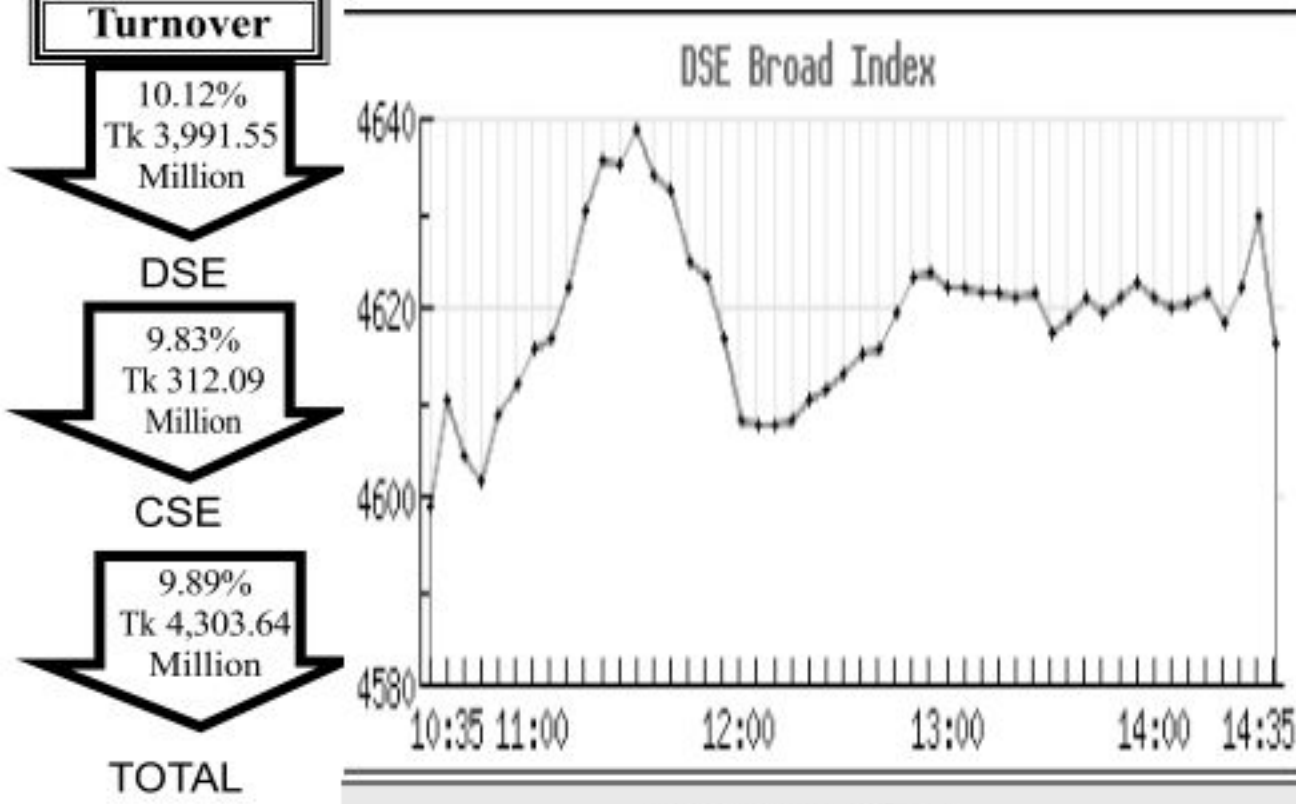
Capital Market Highlights:

INDEX April 20 2014

Broad Index		DSE SHARIAH		DSE 30	
DSE	4616.44006 (+) 0.38%	1034.32321 (-) 0.06%	1698.56791 (-) 0.27%		
All Share		CSE CSCX		CSE 30	
CSE	14255.8399 (+) 0.42%	8880.1778 (+) 0.13%	12026.4669 (-) 0.22%		

Turnover

DSE	10.12% Tk 3,991.55 Million
CSE	9.89% Tk 4,303.64 Million



Key Features - April 20, 2014

Indicators	DSE	CSE	TOTAL
Turnover (Million Taka)	3,991.55	312.09	4,303.64
Turnover (Volume)	80,896,528	7,883,809	88,780,337
No. of Contract	90,804	12,642	103,446
Traded Issues	288	218	288
Issue Gain (Avg. Price Basis)	180	144	180
Issue Loss (Avg. Price Basis)	102	69	102
Unchanged Issue (Avg. Price Basis)	6	4	6
Market Cap. Equity (Billion Tk.)	2,339.53	2,248.71	2,339.53
Market Cap. Equity (Billion US\$)	28.36	27.26	28.36

Combined Turnover Leaders

Company	Volume (Share)	Value (M. Taka)	% of Total	Average Price
LafargeS Cement-Z	3951500	280.90	6.54	71.09
Meghna Petroleum -A	890271	276.01	6.43	310.02
HeidelbergCement -A	377300	212.62	4.95	563.54
Grameenphone-A	836098	209.47	4.88	250.54
Padma Oil Co. -A	461840	163.46	3.81	353.94
Olympic Ind. -A	658837	157.87	3.68	239.62
Square Pharma -A	420768	118.71	2.76	282.12
UCBL -A	4269648	105.92	2.47	24.81
Familytex (BD) Ltd.-N	1759500	95.18	2.22	54.09
AB Bank -A	3172662	93.77	2.18	29.56
BSC-A	150120	92.95	2.16	619.14
BD Submarine Cable-A	429841	88.57	2.06	206.06
Jamuna Oil -A	365490	86.22	2.01	235.92
Southeast Bank-A	4331086	85.90	2.00	19.83
Emerald Oil Ind. -N	1645075	83.86	1.95	50.98
Titus Gas TDCLA	985485	83.55	1.95	84.78
LankaBangla Fin. -A	1328989	72.97	1.70	54.9
Delta Life Insu. -A	272350	61.86	1.44	227.15
Active Fine Chem.-A	669517	54.66	1.27	81.64
Matin Spinning-N	1359800	54.00	1.26	39.71
Social Islami. B-A	3468183	49.79	1.16	14.36
Square Textile -A	429157	48.07	1.12	112.01
BD Building Systems -A	697100	48.04	1.12	68.91
FAS Fin. & Inv. Ltd-B	2702095	40.52	0.94	14.99
aamra technologies-A	1041995	38.10	0.89	36.56
Golden Son -A	661455	36.39	0.85	55.02
UNITED AIR-A	2580516	33.76	0.79	13.08
Apollo Ispat CL -N	1250000	32.60	0.76	26.08
BEXIMCO Ltd. -A	1124885	32.51	0.76	28.9
Bengal Windsor-A	659900	31.48	0.73	47.7

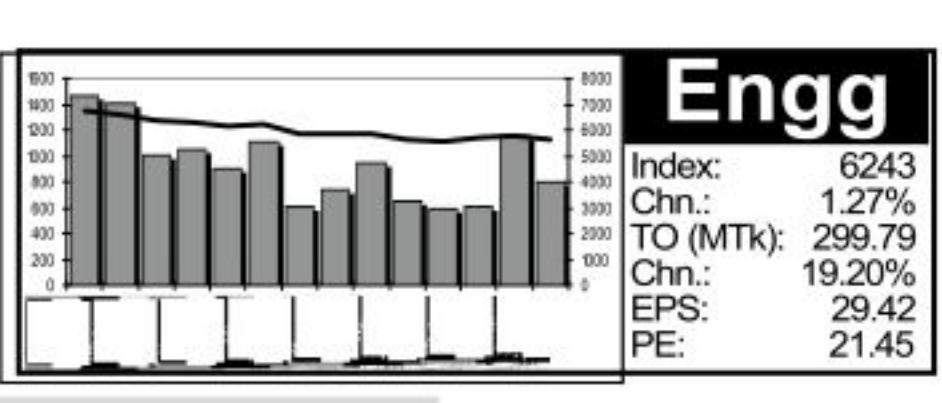
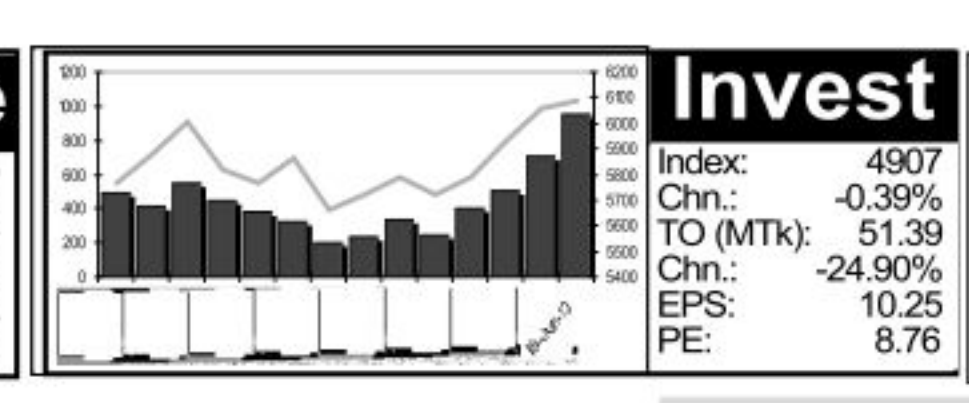
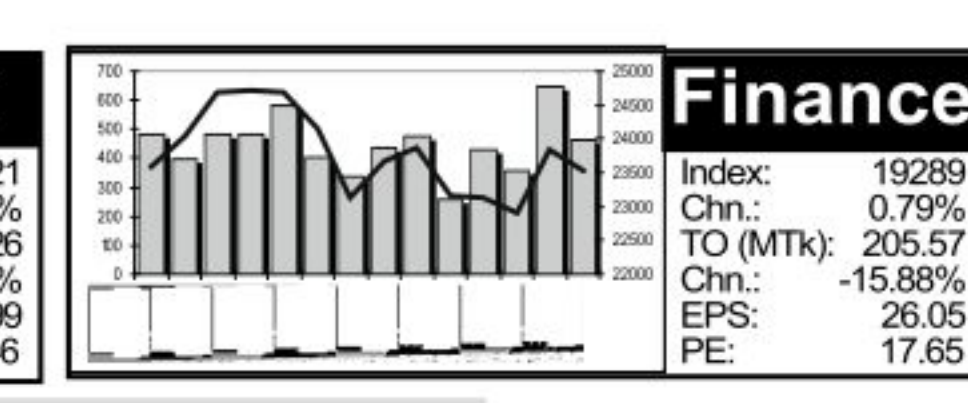
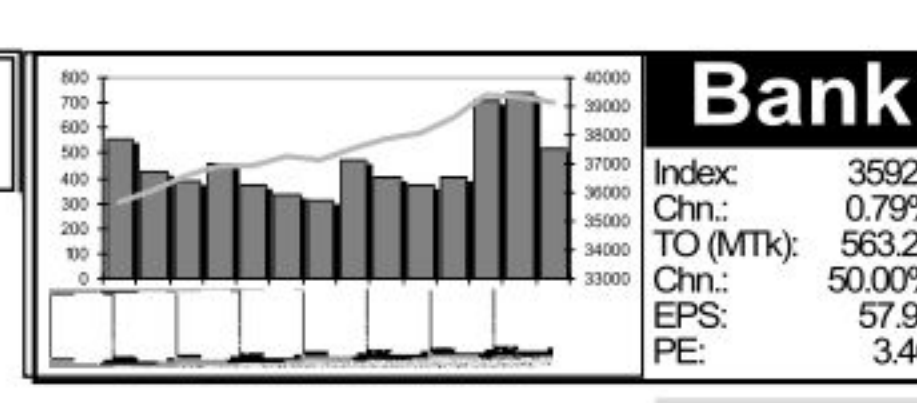
Sectoral Turnover Summary

Sector	DSE		CSE		Total	
	Mill. (Tk)	%	Mill. Tk.	%	Mill. Tk.	%
Bank	516.70	12.94	46.56	12.82	563.26	12.93
NBFI	193.36	4.84	12.21	3.36	205.57	4.72
Investment	47.48	1.19	3.91	1.08	51.39	1.18
Engineering	279.54	7.00	20.25	5.58	299.79	6.88
Food & Allied	284.03	7.12	19.06	5.25	303.09	6.96
Fuel & Power	688.98	17.26	45.28	12.46	734.25	16.86
Jute	3.22	0.08	0.00	0.00	3.22	0.07
Textile	359.15	9.00	52.66	14.50	411.81	9.46
Pharma & Chemical	349.65	8.76	23.15	6.37	372.79	8.56
Paper & Packaging	0.80	0.02	17.33	4.77	18.13	0.42
Service	28.08	0.70	1.12	0.31	29.20	0.67
Leather	42.29	1.06	20.13	5.54	62.42	1.43
Ceramic	10.09	0.25	1.78	0.49	11.87	0.27
Cement	509.53	12.77	31.68	8.72	541.21	12.43
Information Technology	55.26	1.38	6.48	1.78	61.74	1.42
General Insurance	50.32	1.26	1.41	0.39	51.73	1.19
Life Insurance	118.18	2.96	8.44	2.32	126.63	2.91
Telecom	272.40	6.82	25.64	7.06	298.05	6.84
Travel & Leisure	47.28	1.18	5.85	1.61	53.13	1.22
Miscellaneous	135.13	3.39	20.27	5.58	155.40	3.57
Debtenture	0.08	0.00	0.02	0.00	0.10	0.00

Sectoral P/E & EPS

Sector	P/E		EPS(%)	
	DSE	CSE	DSE	CSE
Bank	3.46	3.44	57.99	57.99
NBFI	17.65	18.21	26.05	26.34
Investment	8.76	8.76	10.25	10.25
Engineering	21.45	20.97	29.42	28.63
Food & Allied	33.49	35.05	115.55	116.40
Fuel & Power	13.28	12.94	64.02	64.02
Textile	10.78	10.19	26.33	26.31
Pharma. & Chemical	30.23	29.66	53.74	46.31
Paper & Printing	34.20	34.45	8.39	8.92
Service	18.73	18.75	18.94	18.94
Leather	21.03	21.56	109.27	131.58
Ceramic	38.97	39.11	10.02	10.02
Cement	19.52	19.54	53.64	53.64
IT	19.22	19.11	12.25	12.25
General Insurance	12.49	12.47	28.01	29.40
Life Insurance	29.52	30.32	44.75	44.75
Telecom	23.71	23.70	103.81	103.81
Travel & Leisure	15.50	17.46	20.95	19.59
Miscellaneous	13.54	13.59	28.62	27.88
Stock Exchanges	10.72	10.51	47.66	47.54

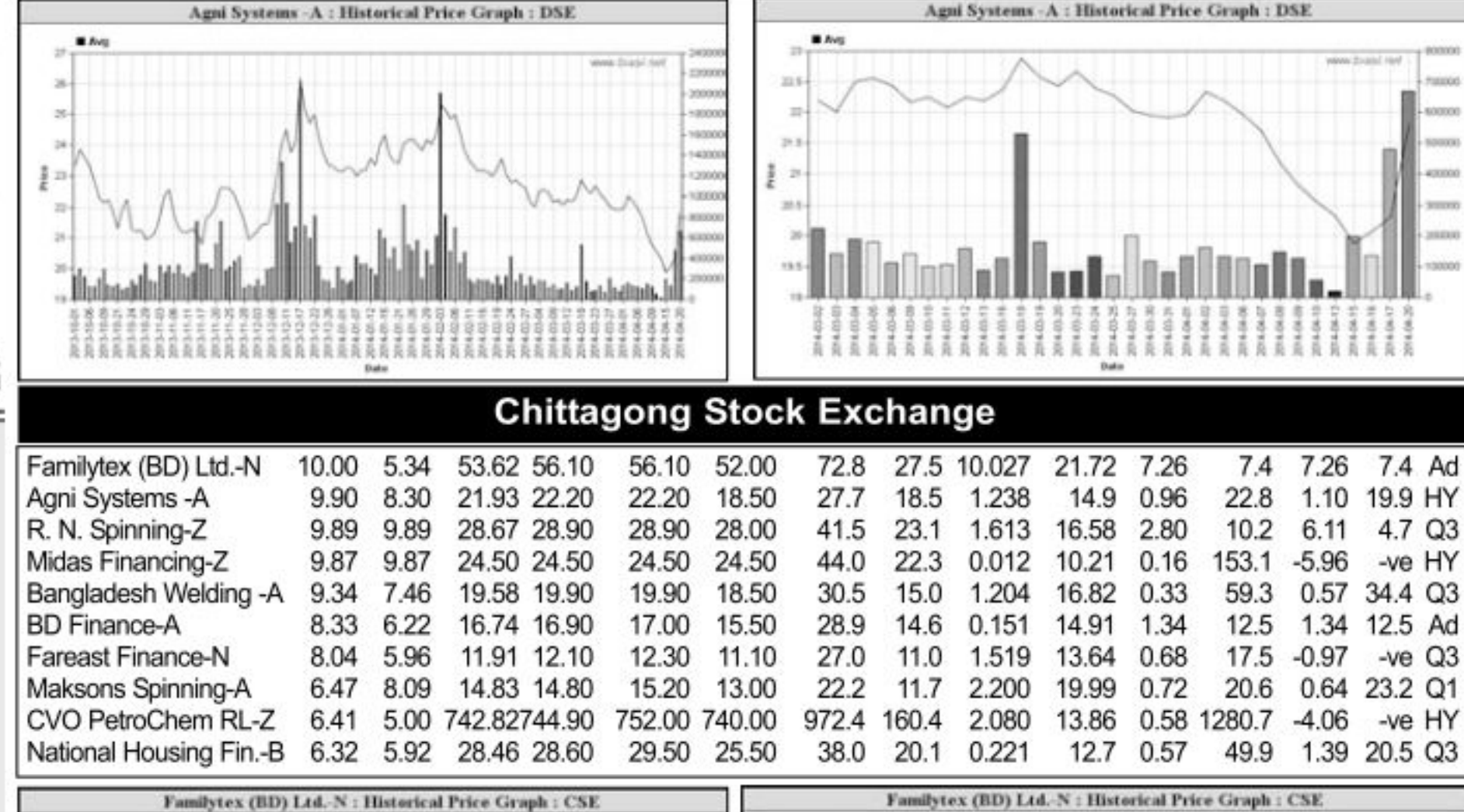
Prepared exclusively for Daily Star by Business Information Automation Service Line (BIASL) on the basis of information collected from daily stock quotations and audited reports of the listed companies. High level of caution has been taken to collect and present the above information and data. The publisher will not take any responsibility if any body uses this information and data for his/her investment decision. For any query please email to biasl@bol-online.com or send SMS to 01552153562 or go to www.biasl.net



Capital Gainers

Dhaka Stock Exchange

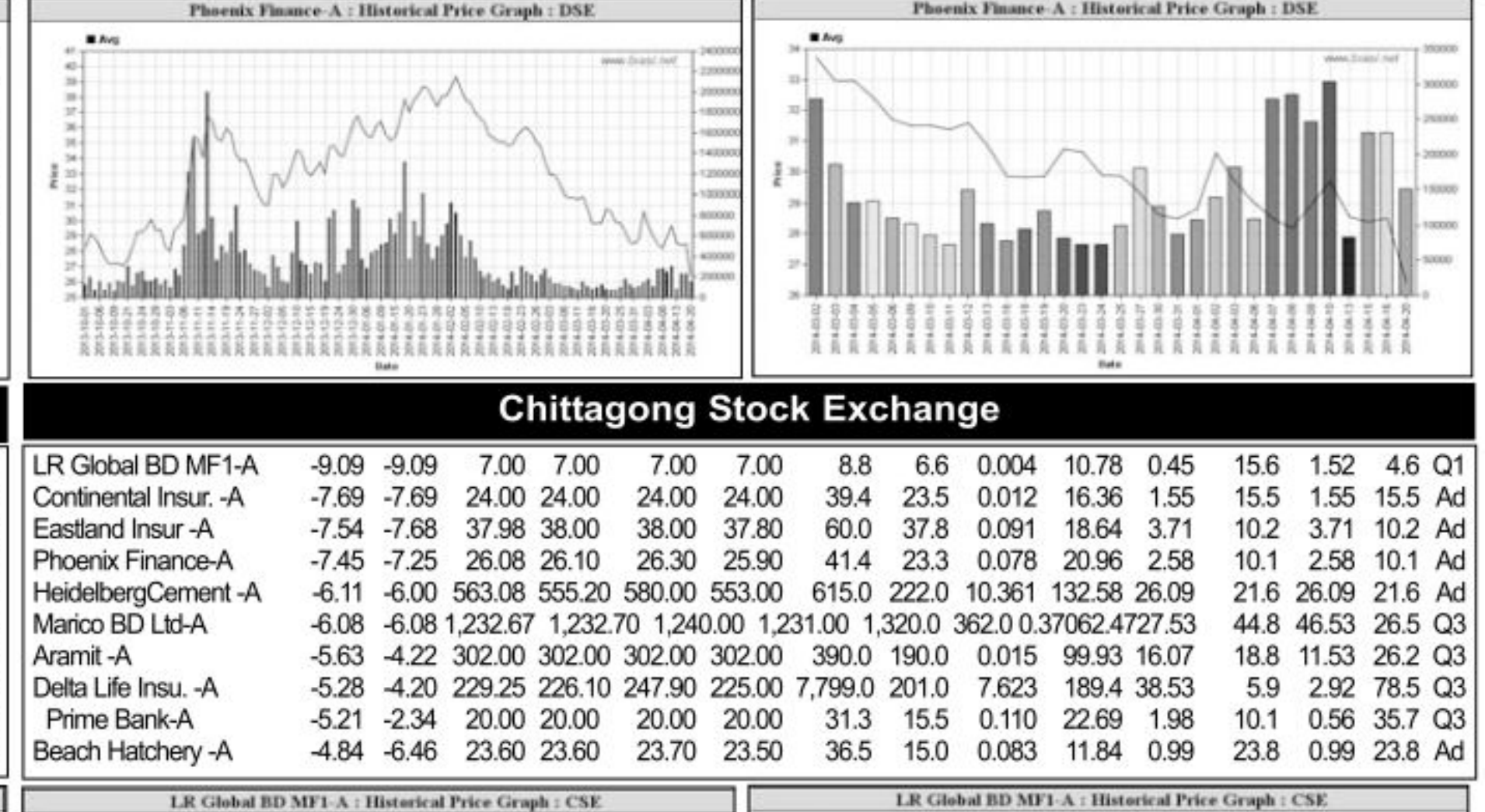
Company	Price Chn. (%)		Price Scale		T'over		Audited		Latest						
	Clo	Avg.	D Hi	D Lo	Yr Hi	YrLo	M.Tk	NAV	EPS	PE					
Agni Systems -A	9.90	7.39	21.81	22.20	22.20	18.40	28.0	18.0	14.666	14.9	0.96	22.7	1.10	19.8	HY
Familytex (BD) Ltd.-N	9.80	6.49	54.15	56.00	56.10	51.60	74.8	27.5	85.149	21.72	7.26	7.5	7.26	7.5	Ad
Rahima Food -Z	9.72	8.68	45.31	46.30	46.40	42.00	92.9	14.0	2.877	4.45	0.52	87.1	1.00	-ve	HY
R.N. Spinning-Z	9.70	11.93	29.09	29.40	29.40	24.20	41.0	22.6	9.342	16.58	2.80	10.4	6.11	4.8	Q3
BD Finance-A	9.68	7.49	16.93	17.00	17.20	14.00	29.1	14.0	15.663	14.91	1.34	12.6	1.34	12.6	Ad
Bangladesh Welding -A	7.65	6.71	19.41	19.70	20.00	16.60	30.0	15.5	3.947	16.82	0.33	58.8	0.57	34.1	Q3
CVO PetroChem RL-Z	7.44	2.90	736.87	757.90	758.00	700.00	945.0	143.5	11.053	13.86	0.58	127.0	4.06	-ve	HY
Anilma Yam -A	7.30	5.72	24.76	25.00	25.20	24.10	41.6	18.3	1.436	11.99	1.36	18.0	5.80	31.0	HY
National Housing Fin.-B	7.01	5.02	28.65	29.00	29.70	25.00	37.6	18.6	1.792	12.7	0.57	50.3	1.39	21.0	Q3
Ambee Pharma -A	6.93	6.70	30.66	30.60	31.00	296.00	363.7	176.0	10.102	26.15	3.94	77.6	5.01	60.6	Q3



Capital Losers

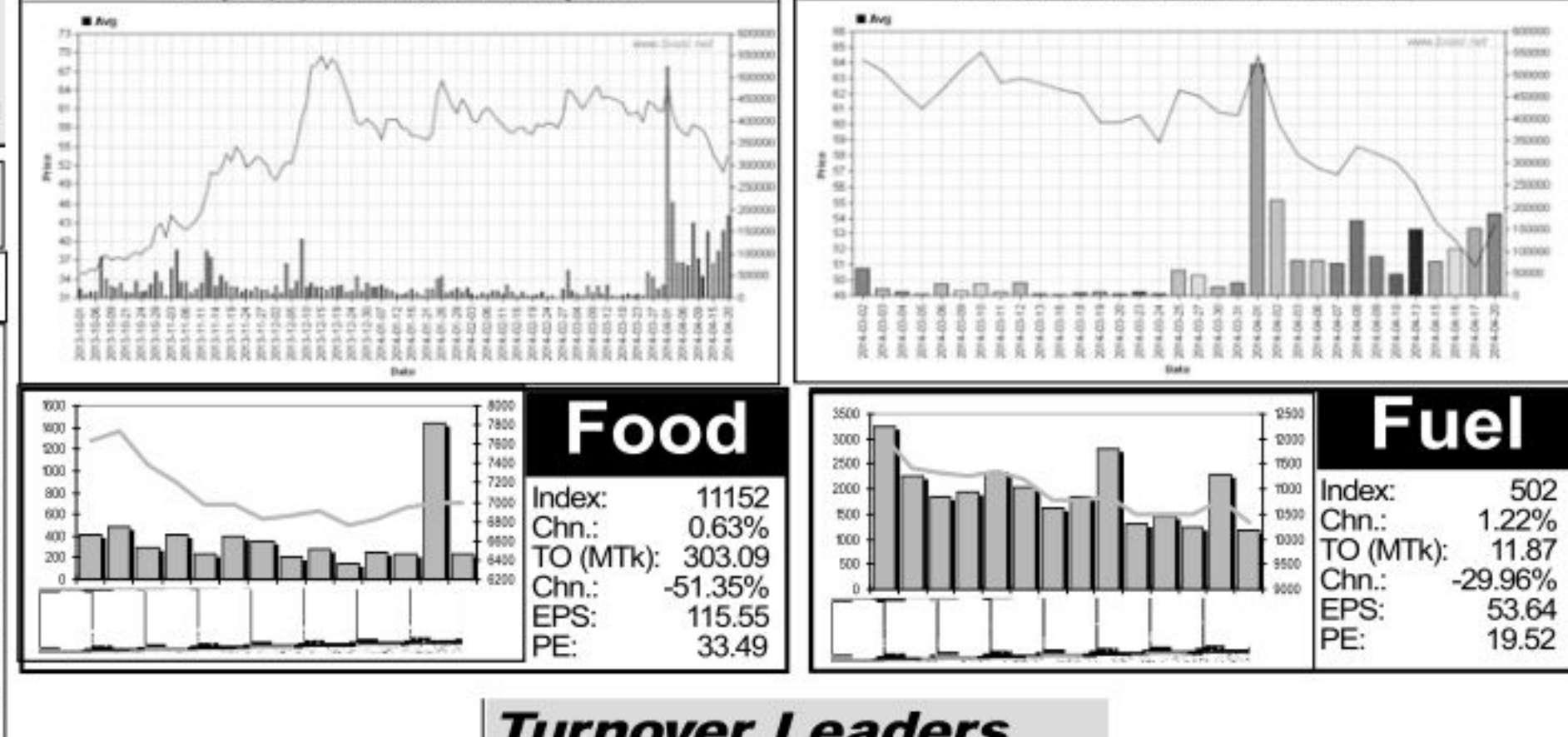
Dhaka Stock Exchange

Company	Price Chn. (%)		Price Scale		T'over		Audited		Latest						
	Clo	Avg.	D Hi	D Lo	Yr Hi	YrLo	M.Tk	NAV	EPS	PE					
Phoenix Finance-A	-7.34	-7.36	26.42	26.50	28.00	25.80	42.5	23.0	3.960	20.96	2.58	10.2	2.58	10.2	Ad
HeidelbergCement -A	-6.00	-6.05	563.5655570	585.00	552.90	615.0	220.0202262	132.58	26.09	21.6	26.09	21.6	26.09	21.6	Ad
Delta Life Insu. -A	-5.15	-4.81	226.85224.60	235.00	223.20	8500.0	202.0	54.241	189.4	38.53	5.9	2.92	77.7	Q3	
Beach Hatchery -A	-4.82	-7.14	23.55	23.70	23.70	19.50	36.8	14.5	2.688	11.84	0.99	23.8	0.99	23.8	Ad
LR Global BD MF1-A	-4.48	-3.71	61.49	64.40	6.80	6.20	9.7	6.2	3.019	10.78	4.45	1.4	1.52	4.3	Q1
Active Fine Chem.-A	-4.17	-0.41	81.65	80.40	85.90	79.80	106.0	46.5	52.597	18.74	0.85	16.8	4.85	16.8	Ad
Shamra Islami Life-N	-4.02	-4.64	69.86	69.30	71.10	68.70	101.0	51.0	4.122	25.76	1.63	42.9	1.10	63.5	HY
Padma Sugar -Z	-3.85	-3.85	7.50	7.50	7.50	7.50	10.4	6.2	0.002	-396.49	-45.77	-ve	-50.84	-ve	HY
BSC-A	-3.48	-1.49	618.786059.00	635.00	604.00	736.3	217.3	82.338	104.5	1.21	51.4	23.48	26.4	Q3	
Shahjalal Islami -A	-3.45	-3.36	14.08	14.00	15.00	12.00	24.5	12.0	14.716	16.42	1.96	7.2	1.96	7.2	Ad



Chittagong Stock Exchange

Company	Price Chn. (%)		Price Scale		T'over		Audited		Latest						
	Clo	Avg.	D Hi	D Lo	Yr Hi	YrLo	M.Tk	NAV	EPS	PE					
Familytex (BD) Ltd.-N	10.00	5.34	53.62	56.10	56.10	52.00	72.8	27.5	10.027	21.72	7.26	7.4	7.26	7.4	Ad
Agni Systems -A	9.90	8.30	21.93	22.20	22.20	18.50	27.7	18.5	1.238	14.9	0.96	22.8	1.10	19.9	HY
R.N. Spinning-Z	9.89	9.89	28.67	28.90	28.90	28.00	41.5	23.1	1.638	16.58	2.80	10.2	6.11	4.7	Q3
Midast Financing-Z	9.87	9.87	24.50	24.50	24.50	24.50	44.0	22.3	0.012	10.21	0.16	153.1	-5.96	-ve	HY
Bangladesh Welding -A	9.34	7.46	19.58	19.90	19.90	18.50	30.5	15.0	1.204	16.82	0.33	59.3	0.57	34.4	Q3
BD Finance-A	8.33	6.22	16.74	16.90	17.00	15.50	28.9	14.6	0.151	14.91	1.34	12.5	1.34	12.5	Ad
Fareast Finance-N	8.04	5.96	11.91	12.10	12.30	11.20	27.0	11.0	1.519	13.64	0.68	17.5	-0.97	-ve	Q3
Maksons Spinning-A	6.47	8.09	14.83	14.80	15.20	13.00	22.2	11.7	2.200	19.99	0.72	20.6	0.64	23.2	Q1
CVO PetroChem RL-Z	6.41	5.00	742.82744.90	752.00	740.00	972.4	160.4	2.080	13.86	0.58	1280.7	-4.06	-ve	HY	
National Housing Fin.-B	6.32	5.92	28.46	28.60	29.50	25.50	38.0	20.1	0.221	12.7	0.57	49.9	1.39	20.5	Q3



Chittagong Stock Exchange