

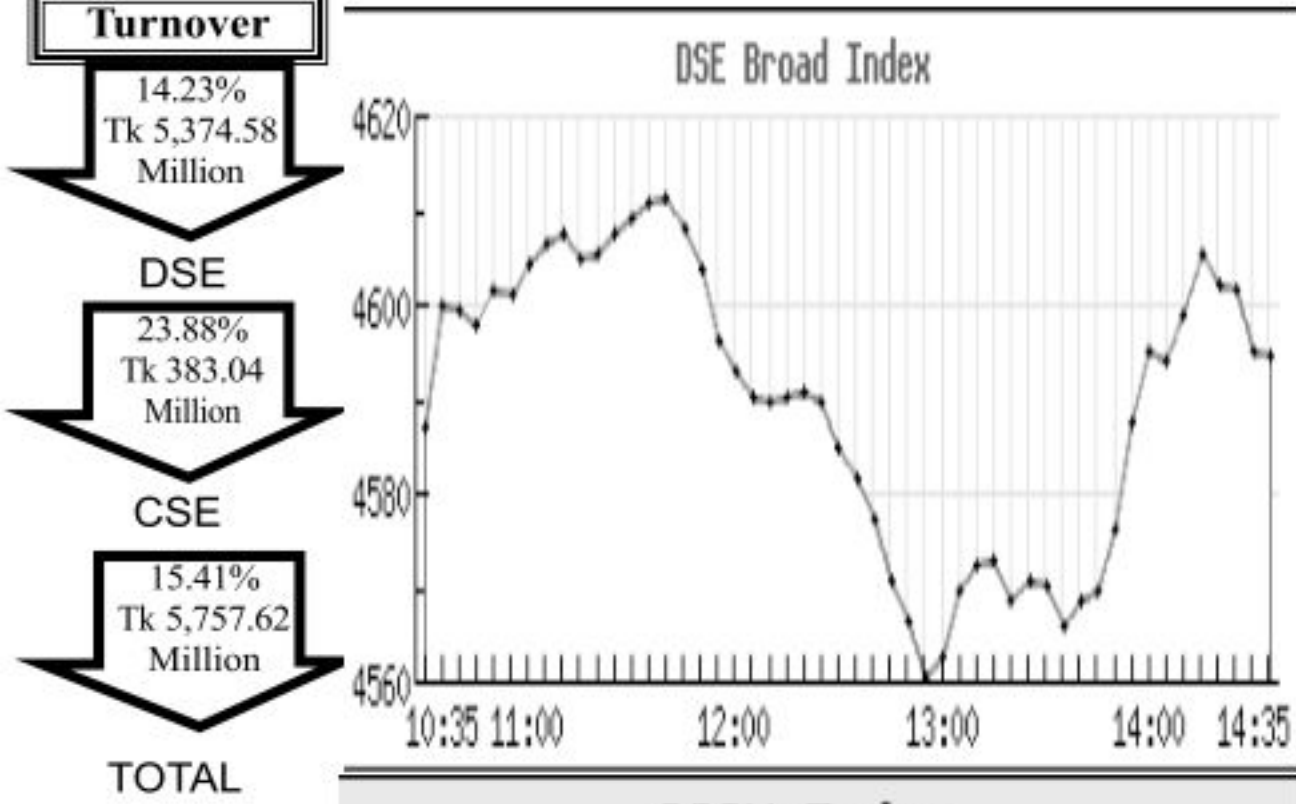
Capital Market Highlights:

INDEX April 09 2014

INDEX	DSE SHARIAH	DSE 30
Broad Index	1019.89275	1674.79893
DSE	4594.33403 (+) 0.16%	(-) 0.43%

CSE

All Share	CSE CSCX	CSE 30
14164.7511 (+) 0.19%	8871.9862 (-) 0.01%	11885.4781 (+) 0.02%



Key Features - April 09, 2014

Indicators	DSE	CSE	TOTAL
Turnover (Million Taka)	5,374.58	383.04	5,757.62
Turnover (Volume)	82,242,900	8,033,880	90,276,780
No. of Contract	87,120	12,552	99,672
Traded Issues	297	221	297
Issue Gain (Avg. Price Basis)	100	93	100
Issue Loss (Avg. Price Basis)	188	123	188
Unchanged Issue (Avg. Price Basis)	9	4	9
Market Cap. Equity (Billion Tk.)	2,337.51	2,236.63	2,337.51
Market Cap. Equity (Billion US\$)	28.33	27.11	28.33

Combined Turnover Leaders

Company	Volume (Share)	Value (M. Taka)	% of Total	Average Price
Square Pharma -A	3679002	1,016.60	17.68	276.32
LafargeS Cement-Z	14070000	864.69	15.04	61.46
Grameenphone-A	1775384	437.59	7.61	246.48
HeidelbergCement -A	402210	224.67	3.91	558.58
Padma Oil Co. -A	578912	207.26	3.60	358.01
Meghna Petroleum -A	481049	137.42	2.39	285.67
Olympic Ind. -A	604000	135.64	2.36	224.56
AB Bank - A	4749857	128.25	2.23	27
BSC-A	190975	124.56	2.17	652.22
Golden Son -A	1783993	107.87	1.88	60.47
Matin Spinning-N	2132200	92.17	1.60	43.23
BD Submarine Cable-A	419832	89.65	1.56	213.54
UCBL - A	3050084	71.27	1.24	23.37
Familytex (BD) Ltd.-N	1226500	70.45	1.23	57.44
Renata Ltd. -A	64369	68.86	1.20	1069.69
Jamuna Oil -A	273559	63.23	1.10	231.15
LankaBangla Fin. -A	978991	61.35	1.07	62.66
Singer BD -A	218925	50.18	0.87	229.2
The Ibn SinaA	326717	42.60	0.74	130.39
Apex Footwear-A	80800	39.68	0.69	491.07
Delta Life Insu. -A	170950	39.17	0.68	229.15
Eastern Housing -A	720566	39.06	0.68	54.21
Southeast Bank-A	2177540	38.90	0.68	17.87
National Tubes -A	215200	36.15	0.63	167.97
Emerald Oil Ind. -N	599511	31.12	0.54	51.91
BD Building Systems -A	446975	30.63	0.53	68.52
Bata Shoe Ltd. -A	29700	30.37	0.53	1022.48
Apex Tannery -A	177500	29.65	0.52	167.02
M.I. Cement-A	339884	28.51	0.50	83.88
One Bank -A	1841031	26.31	0.46	14.29

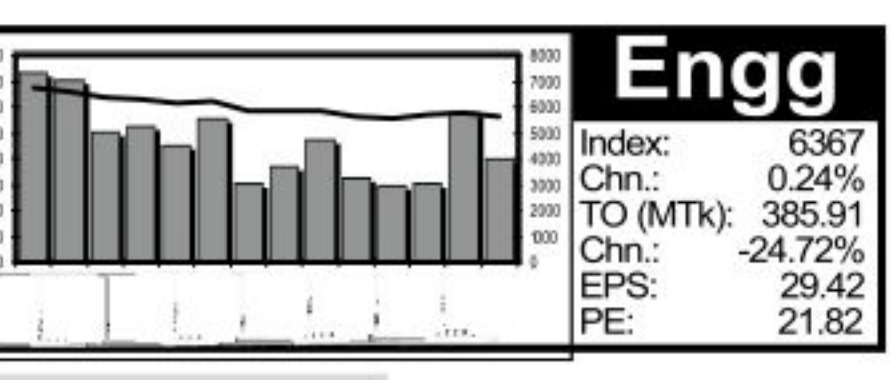
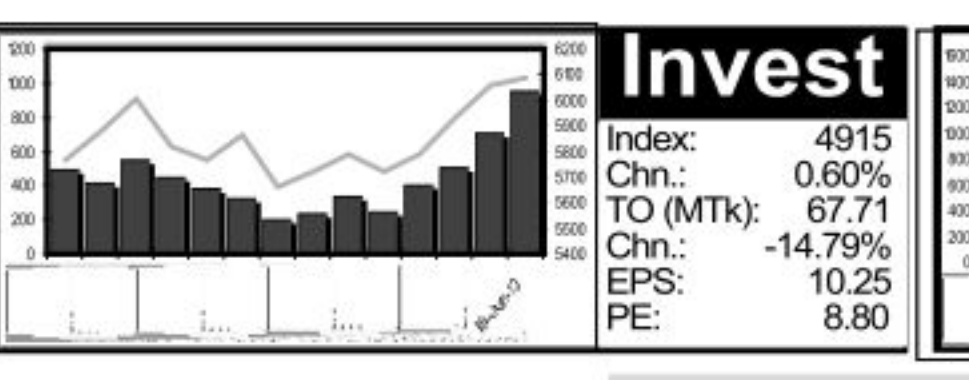
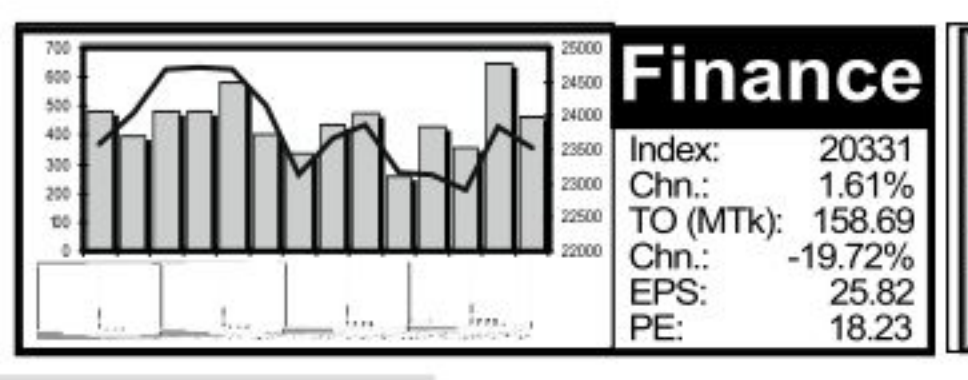
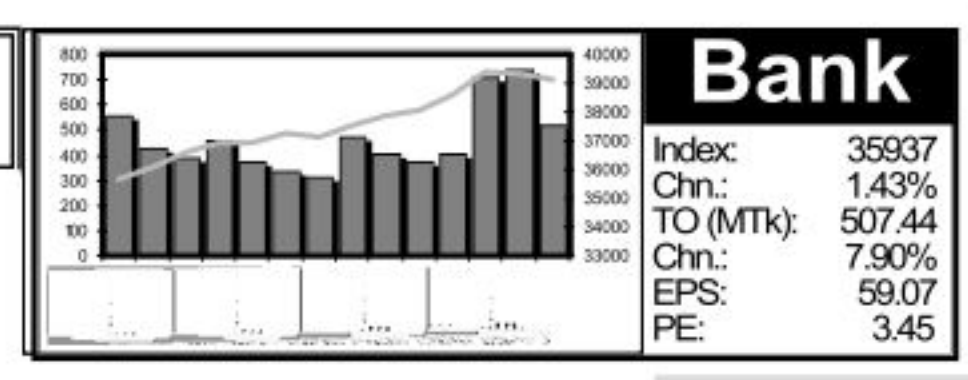
Sectoral Turnover Summary

Sector	DSE		CSE		Total	
	Mill. (Tk)	%	Mill. Tk.	%	Mill. Tk.	%
Bank	469.24	8.73	38.20	8.97	507.44	8.75
NBFI	143.87	2.68	14.82	3.48	158.69	2.74
Investment	62.59	1.16	5.12	1.20	67.71	1.17
Engineering	356.52	6.63	29.39	6.90	385.91	6.65
Food & Allied	225.11	4.19	18.48	4.34	243.59	4.20
Fuel & Power	492.43	9.16	29.24	6.87	521.67	9.09
Jute	2.99	0.06	0.00	0.00	2.99	0.05
Textile	334.52	6.22	43.50	10.21	378.02	6.52
Pharma & Chemical	1260.53	23.45	24.59	5.77	1285.12	22.16
Paper & Packaging	0.57	0.01	14.28	3.35	14.85	0.26
Service	46.74	0.87	1.94	0.45	48.68	0.84
Leather	100.67	1.87	16.41	3.85	117.08	2.02
Ceramic	21.16	0.39	2.43	0.57	23.59	0.41
Cement	1046.72	19.48	100.66	23.64	1147.38	19.78
Information Technology	19.31	0.36	4.25	1.00	23.57	0.41
General Insurance	34.75	0.65	1.20	0.28	35.95	0.62
Life Insurance	85.01	1.58	3.64	0.85	88.64	1.53
Telecom	475.16	8.84	52.08	12.23	527.24	9.09
Travel & Leisure	23.53	0.44	4.54	1.07	28.07	0.48
Miscellaneous	167.08	3.11	20.86	4.90	187.94	3.24
Debtenture	6.08	0.11	0.22	0.05	6.30	0.11

Sectoral P/E & EPS

Sector	P/E		EPS(%)	
	DSE	CSE	DSE	CSE
Bank	3.45	3.43	59.07	59.07
NBFI	18.23	18.30	25.82	26.11
Investment	8.80	8.79	10.25	10.25
Engineering	21.82	21.12	29.42	28.63
Food & Allied	34.13	35.09	116.71	117.57
Fuel & Power	12.86	12.50	64.02	64.02
Textile	10.89	10.31	26.42	26.40
Pharma. & Chemical	30.63	30.25	53.08	45.63
Paper & Printing	34.25	34.91	8.39	8.92
Service	18.75	18.83	18.94	18.94
Leather	21.54	21.28	109.27	131.58
Ceramic	41.44	41.21	10.02	10.02
Cement	18.29	18.31	53.64	53.64
IT	18.83	18.73	12.25	12.25
General Insurance	12.79	13.03	27.71	29.08
Life Insurance	30.22	30.57	44.75	44.75
Telecom	23.43	23.38	103.81	103.81
Travel & Leisure	15.69	17.65	20.95	19.59
Miscellaneous	13.91	14.01	28.60	27.86
Stock Exchanges	10.67	10.41	48.06	47.94

Prepared exclusively for Daily Star by Business Information Automation Service Line (BIASL) on the basis of information collected from daily stock quotations and audited reports of the listed companies. High level of caution has been taken to collect and present the above information and data. The publisher will not take any responsibility if any body uses this information and data for his/her investment decision. For any query please email to biasl@bol-online.com or send SMS to 01552153562 or go to www.biasl.net



Capital Gainers

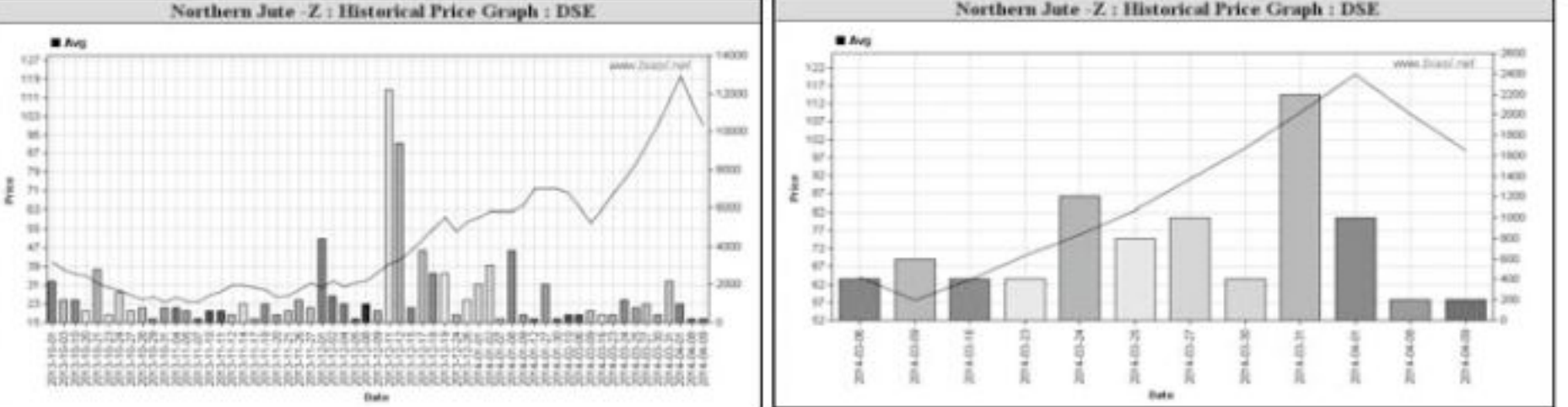
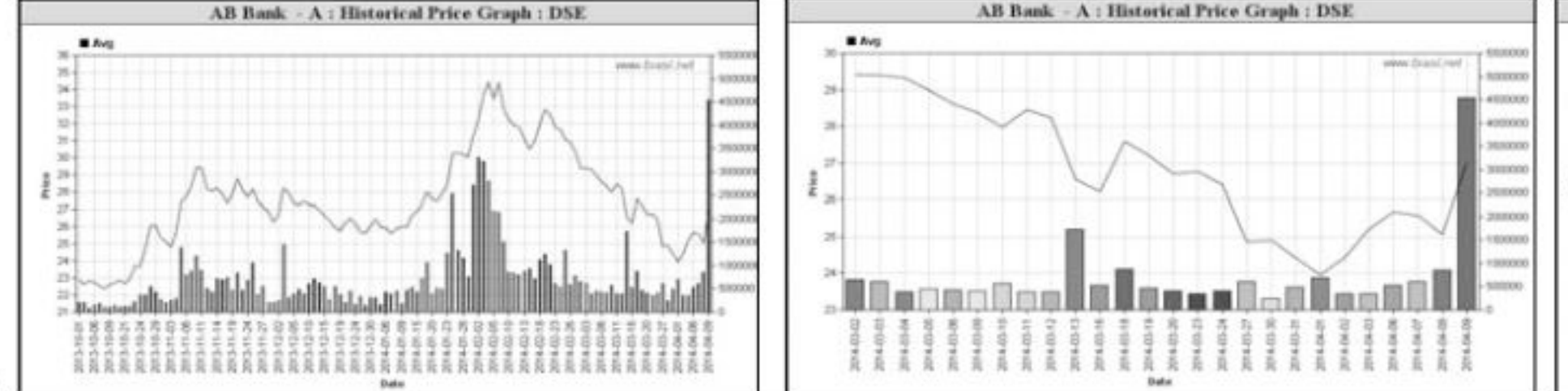
Dhaka Stock Exchange

Company	Price Chn. (%)		Price Scale		Tover	Audited	Latest
	Clo	Avg	D Hi	D Lo			
AB Bank - A	9.60	7.78	27.02	27.40	27.50	22.50	35.5
Savar Refractories-Z	9.09	9.09	60.00	60.00	60.00	60.00	106.9
JMI Syringes MDL-A	7.50	5.70	180.61	182.00	185.70	170.00	330.0
MutualTrust Bank-A	6.92	2.62	16.46	17.00	17.40	14.40	20.0
First Security Bank-A	5.93	2.51	12.26	12.50	12.70	11.00	18.2
Samata LeatherR-Z	5.74	6.06	35.00	35.00	35.00	35.00	38.9
City Bank - A	5.59	1.36	18.62	18.90	19.00	16.30	25.0
Golden Son - A	5.50	5.35	60.46	61.40	61.80	54.50	70.0
Utara Bank - A	5.32	4.00	27.06	27.70	28.50	25.00	38.0
The Ibn SinaA	5.13	3.41	130.43	131.10	132.80	115.00	149.0

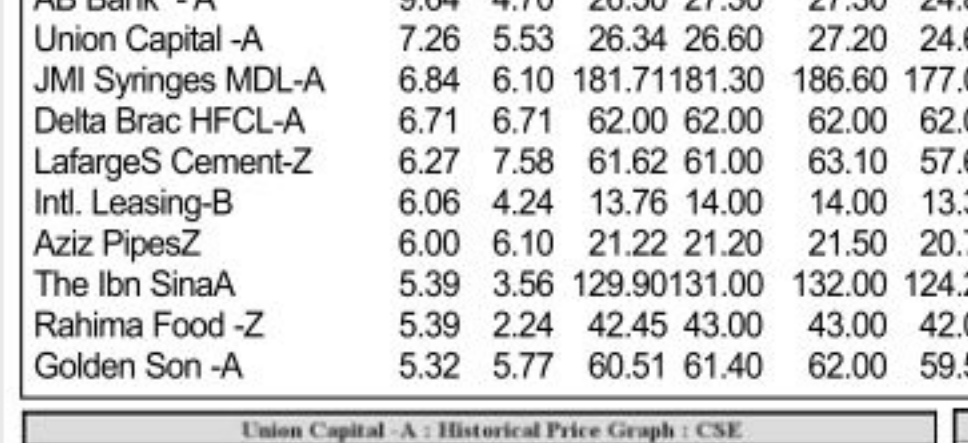
Capital Losers

Dhaka Stock Exchange

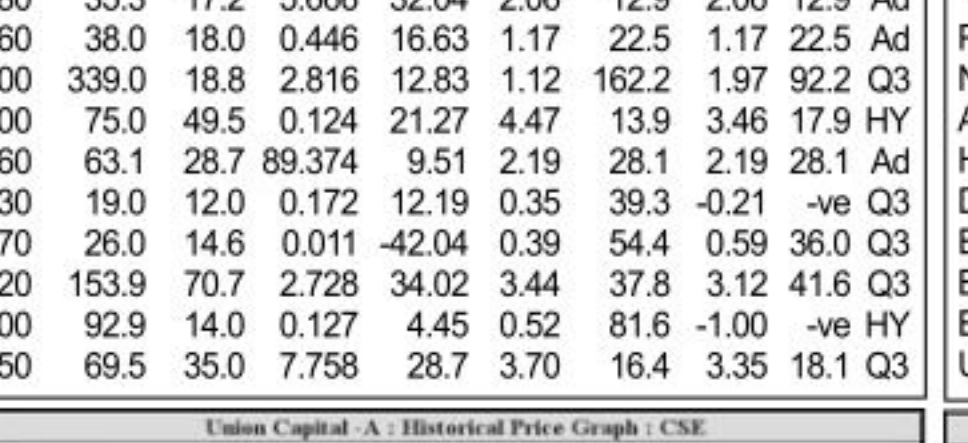
Company	Price Chn. (%)		Price Scale		Tover	Audited	Latest
	Clo	Avg	D Hi	D Lo			
Northern Jute-Z	-9.17	-9.17	99.00	99.00	99.00	120.1	16.2
Trust Bank-A	-6.55	-9.95	15.20	15.70	16.00	14.0	12.845
Reckitt Benckiser -A	-6.00	-4.62	1334.87	1322.50	1425.00	1319.00	2000.0
Eastern Cables-A	-5.22	-7.24	168.71	163.50	179.90	161.00	184.6
Dulama Cotton-Z	-5.06	-5.25	7.58	7.50	7.90	7.40	11.2
Midas Financing-Z	-4.27	-4.41	26.89	26.90	27.90	26.10	44.6
ICB AMCL IslamicMF-A	-4.04	-2.86	21.38	21.40	22.00	20.40	26.8
Marico BD Ltd-A	-3.91	-1.75	1285.39	1259.50	1335.00	1250.00	1335.0
BATBCL -A	-3.68	-3.22	54.71	52.50	55.00	48.00	85.0
Shampur Sugar-Z	-3.57	8.00	8.10	8.10	8.10	10.4	6.2



Food



Fuel



Textile

