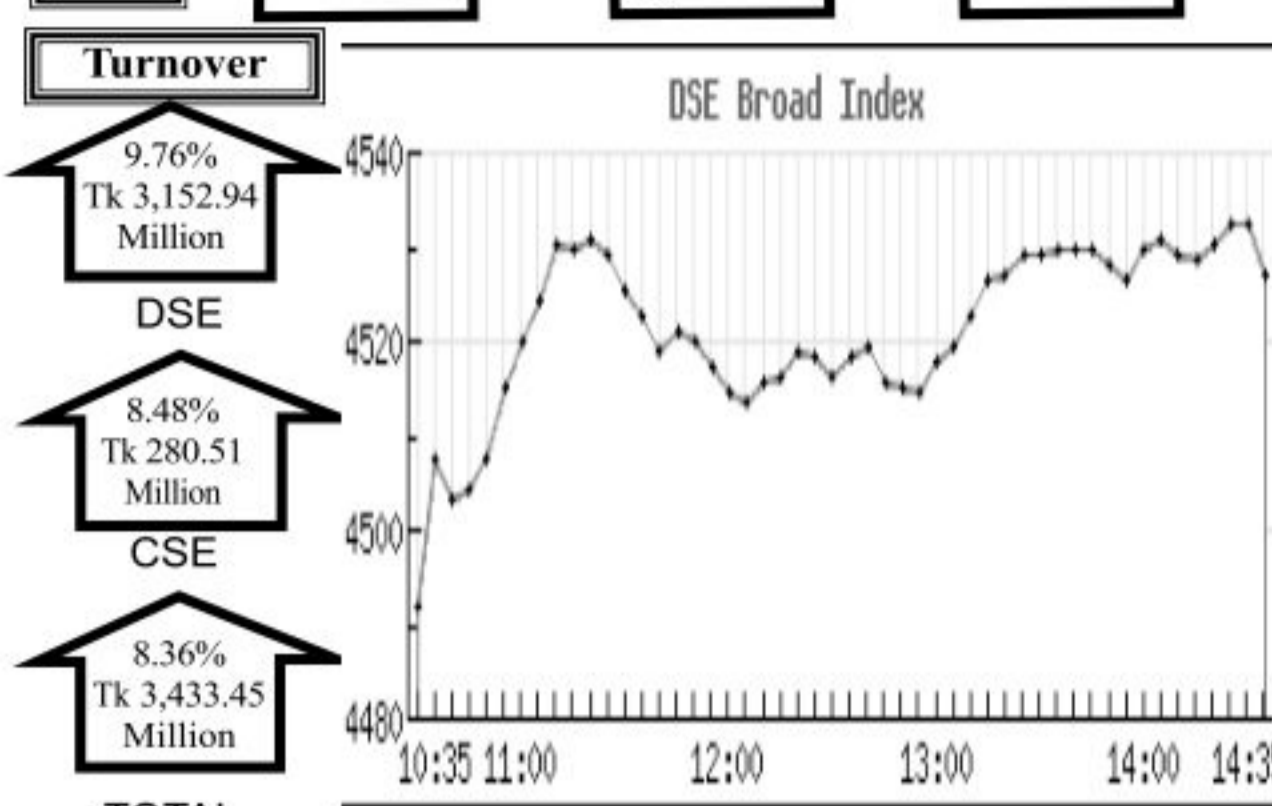
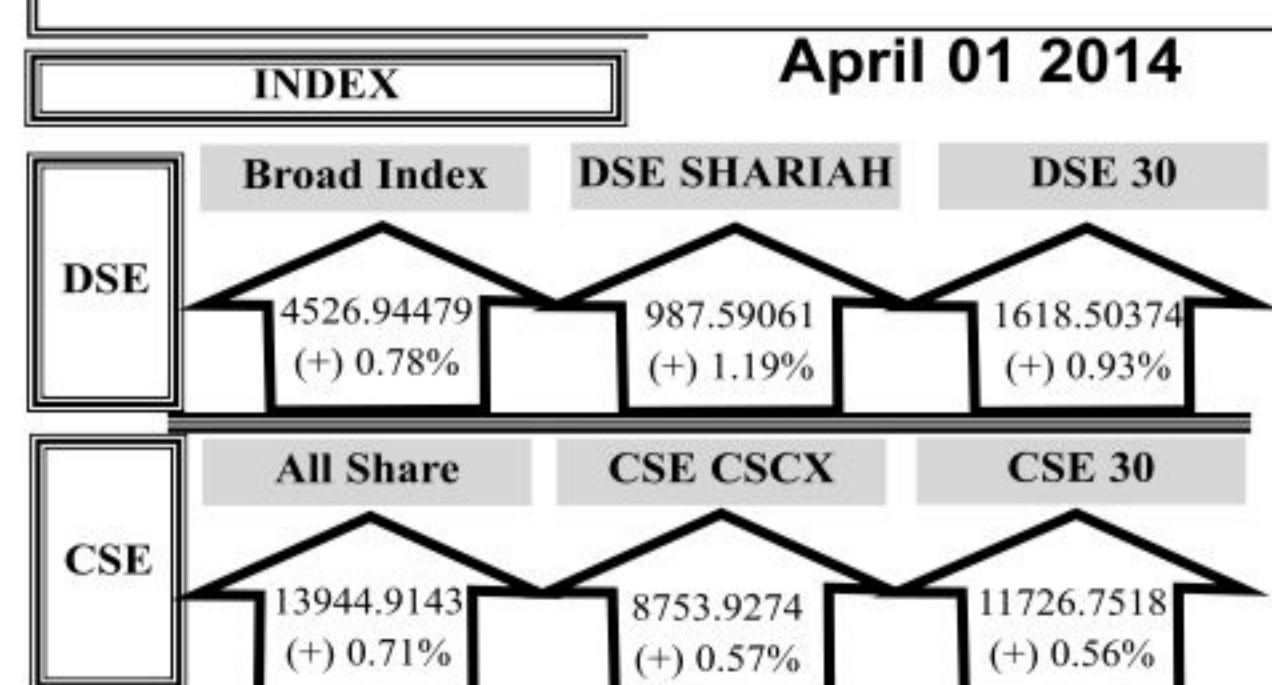


Capital Market Highlights:



Key Features - April 01, 2014

Table with 4 columns: Indicators, DSE, CSE, TOTAL. Includes Turnover (Million Taka), Turnover (Volume), No. of Contract, Traded Issues, Issue Gain/Loss (Avg. Price Basis), Unchanged Issue (Avg. Price Basis), Market Cap. Equity (Billion Tk./US\$).

Combined Turnover Leaders

Table with 5 columns: Company, Volume (Share), Value (M. Taka), % of Total, Average Price. Lists top 20 companies like LafargeS Cement-Z, Familytex (BD) Ltd.-N, Padma Oil Co. -A, etc.

Sectoral Turnover Summary

Table with 5 columns: Sector, DSE (Mill. Tk.), CSE (Mill. Tk.), Total (Mill. Tk.), %. Lists sectors like Bank, NBFI, Investment, Engineering, etc.

Sectoral P/E & EPS

Table with 5 columns: Sector, DSE P/E, CSE P/E, DSE EPS(%), CSE EPS(%). Lists sectors like Bank, NBFI, Investment, Engineering, etc.

Bank. Index: 36154. Chn: 0.17%. TO (MTK): 291.71. Chn: -14.57%. EPS: 59.90. PE: 3.49.

Finance. Index: 20562. Chn: 1.96%. TO (MTK): 132.26. Chn: 36.49%. EPS: 25.78. PE: 18.43.

Invest. Index: 4888. Chn: -0.31%. TO (MTK): 40.75. Chn: -4.68%. EPS: 10.25. PE: 8.80.

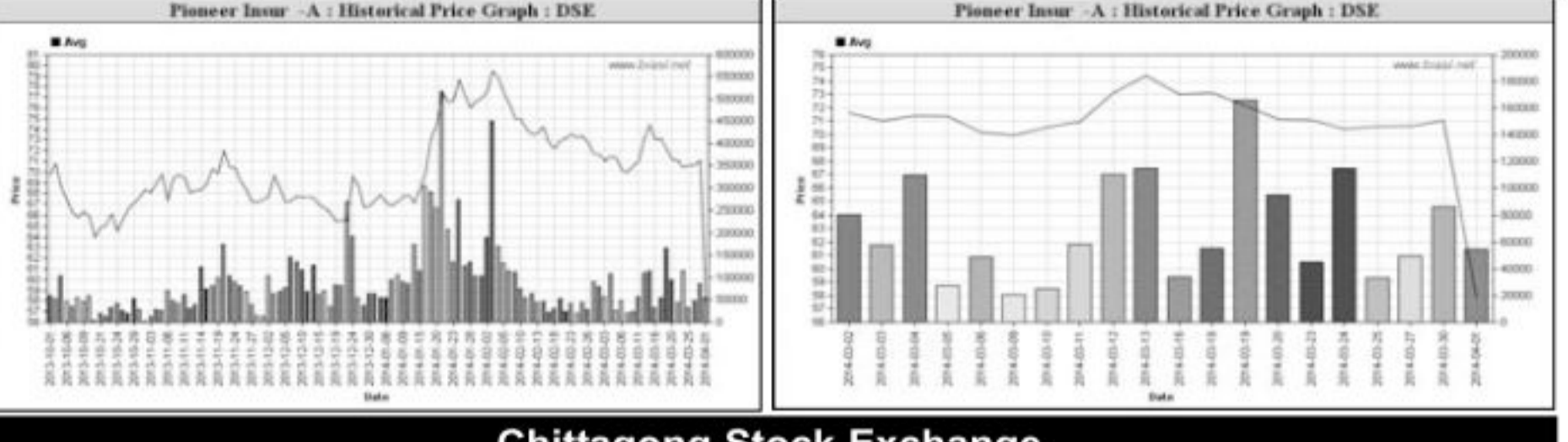
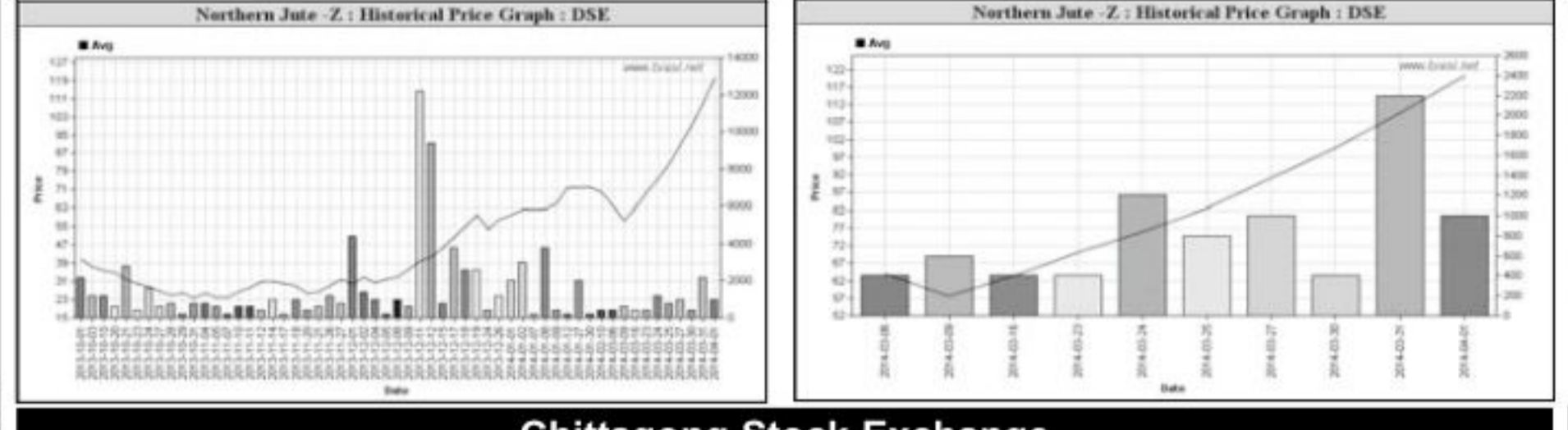
Engg. Index: 6302. Chn: -0.04%. TO (MTK): 322.99. Chn: -7.37%. EPS: 29.42. PE: 21.62.

Capital Gainers

Dhaka Stock Exchange. Table with 11 columns: Company, Price Chn. (%), Price Scale, Yr Hi YrLo, Tover, Audited, Latest. Lists companies like Northern Jute-Z, Monno Staffers-A, etc.

Capital Losers

Dhaka Stock Exchange. Table with 11 columns: Company, Price Chn. (%), Price Scale, Yr Hi YrLo, Tover, Audited, Latest. Lists companies like Pioneer Insur -A, Samata Leather-R, etc.

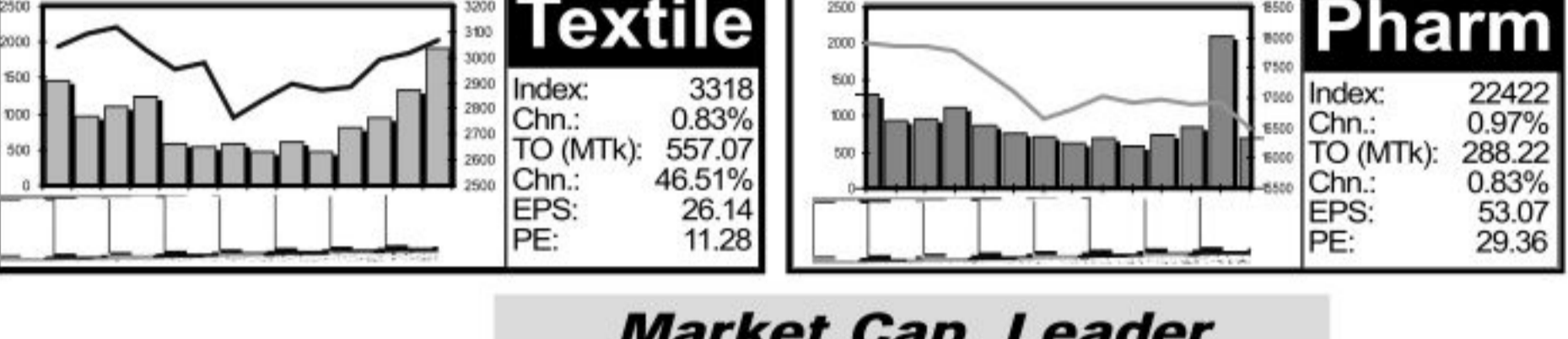
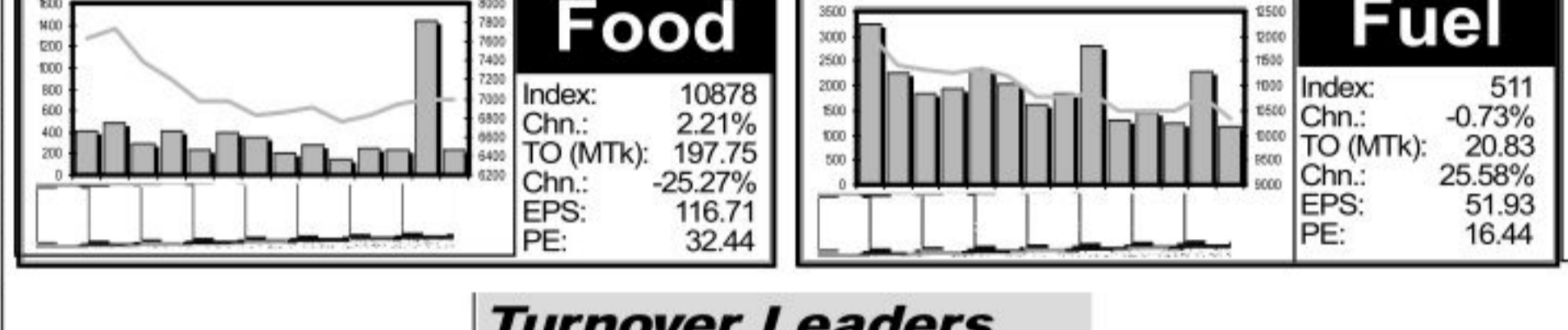


Chittagong Stock Exchange

Table with 11 columns: Company, Price Chn. (%), Price Scale, Yr Hi YrLo, Tover, Audited, Latest. Lists companies like Prime Textile -A, 8th ICB M F -A, etc.

Chittagong Stock Exchange

Table with 11 columns: Company, Price Chn. (%), Price Scale, Yr Hi YrLo, Tover, Audited, Latest. Lists companies like Continental Insur -A, Standard Insurance-A, etc.



Food. Index: 10878. Chn: 2.21%. TO (MTK): 197.75. Chn: -25.27%. EPS: 116.71. PE: 32.44.

Fuel. Index: 511. Chn: -0.73%. TO (MTK): 20.83. Chn: 25.58%. EPS: 51.93. PE: 16.44.

Textile. Index: 3318. Chn: 0.83%. TO (MTK): 557.07. Chn: 46.51%. EPS: 26.14. PE: 11.28.

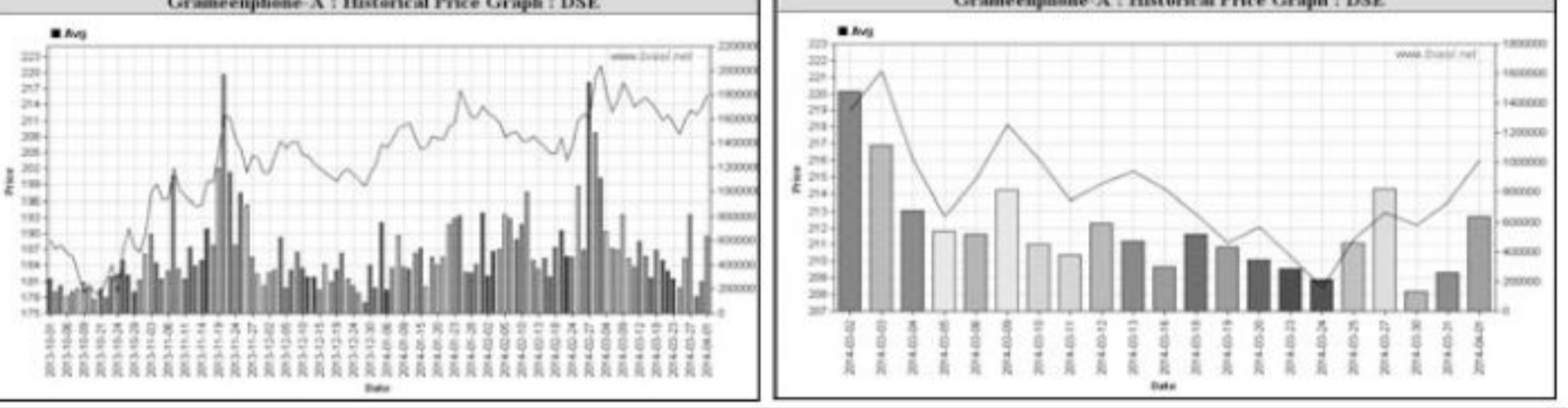
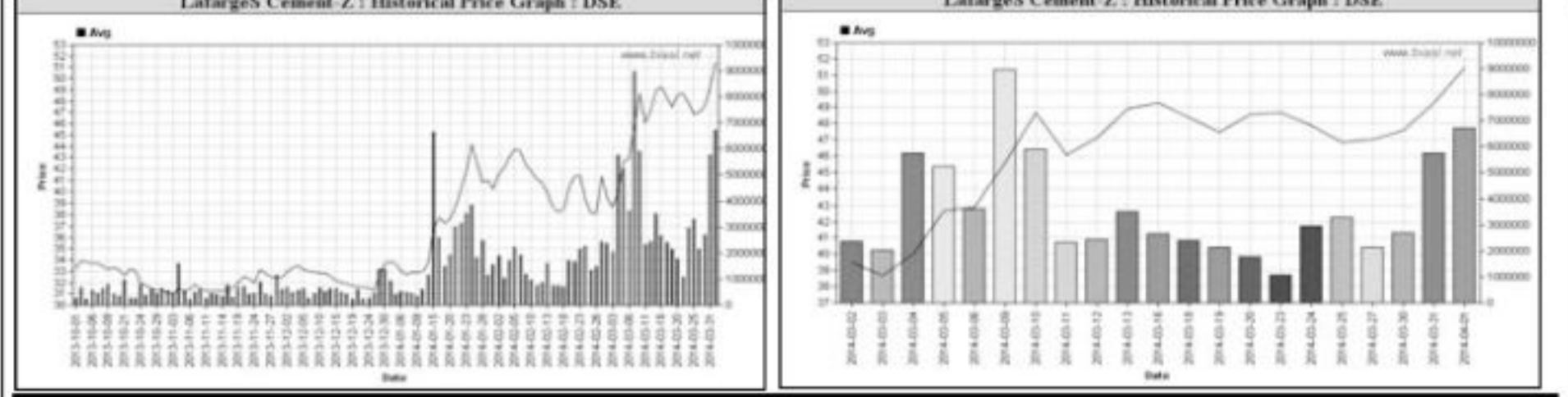
Pharm. Index: 22422. Chn: 0.97%. TO (MTK): 288.22. Chn: 0.83%. EPS: 53.07. PE: 29.36.

Turnover Leaders

Dhaka Stock Exchange. Table with 11 columns: Company, Vol. Value % of, Price Scale, Audited, Latest. Lists companies like LafargeS Cement-Z, Familytex (BD) Ltd.-N, etc.

Market Cap. Leader

Dhaka Stock Exchange. Table with 11 columns: Company, Market Cap. % of, Price Scale, Audited, Latest. Lists companies like Grameenphone-A, BATBCL -A, etc.

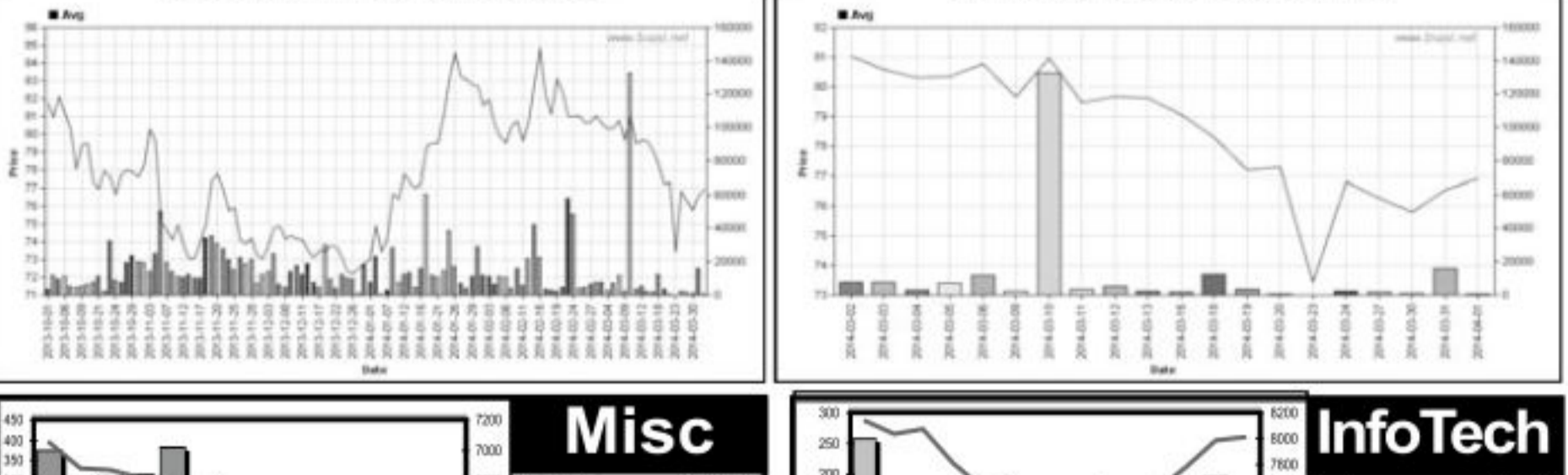
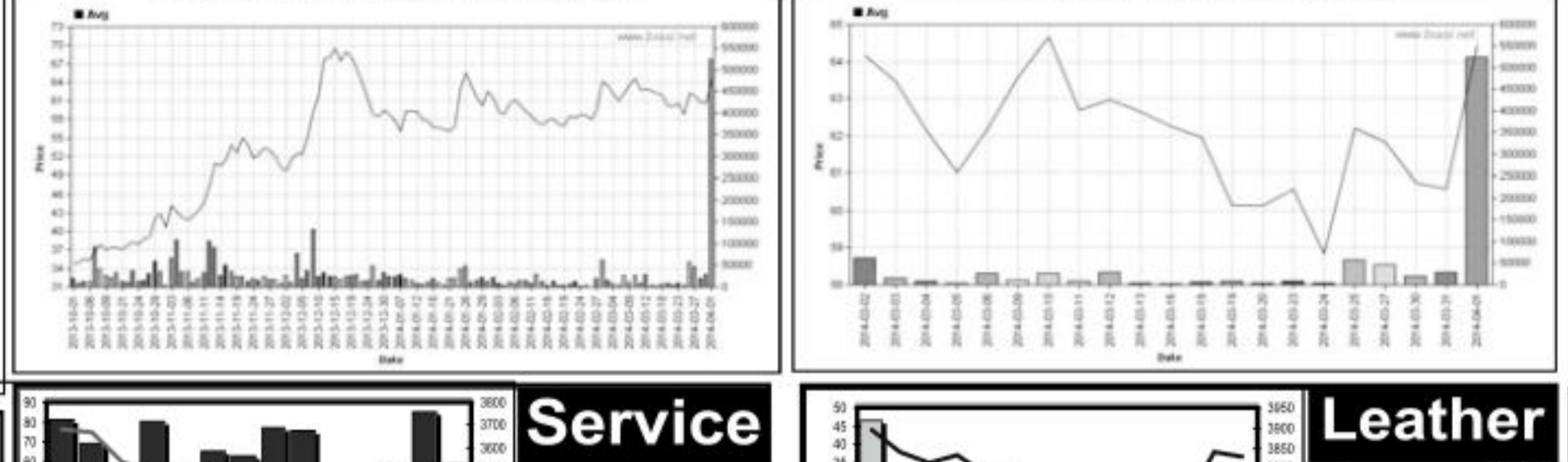


Chittagong Stock Exchange

Table with 11 columns: Company, Vol. Value % of, Price Scale, Audited, Latest. Lists companies like Familytex (BD) Ltd.-N, LafargeS Cement-Z, etc.

Chittagong Stock Exchange

Table with 11 columns: Company, Market Cap. % of, Price Scale, Audited, Latest. Lists companies like Grameenphone-A, BATBCL -A, etc.

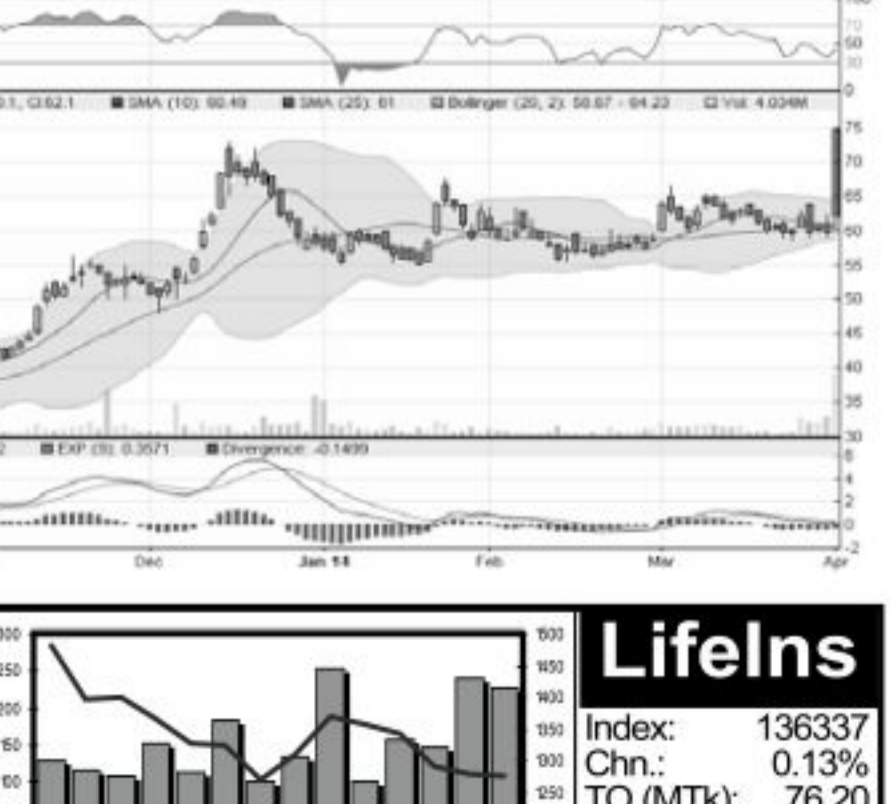
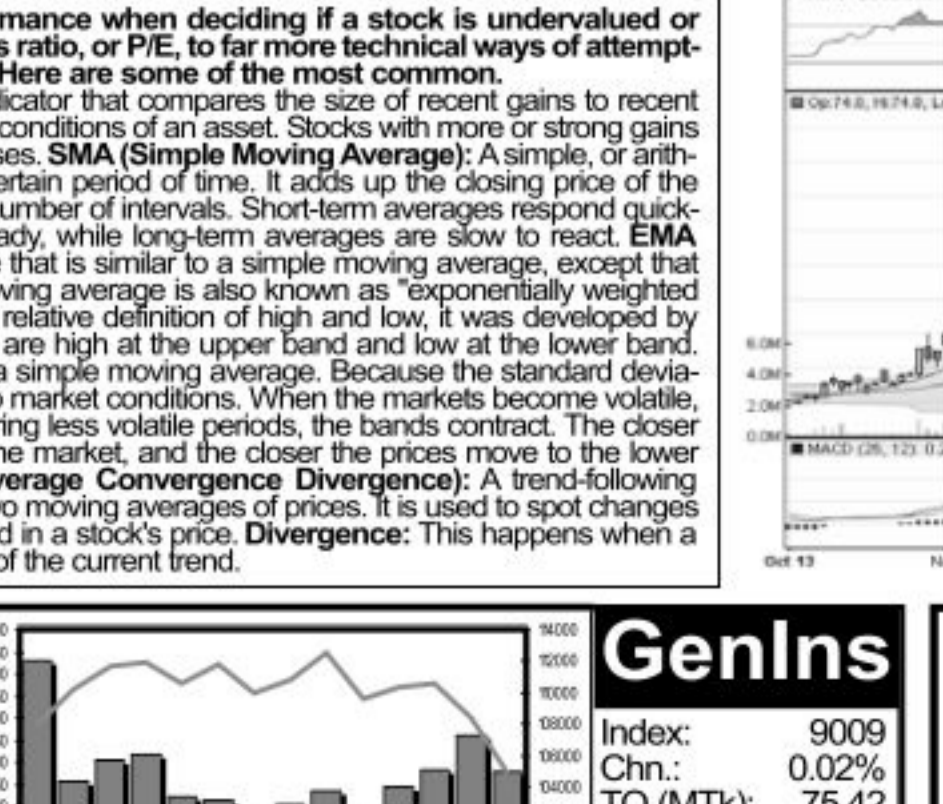
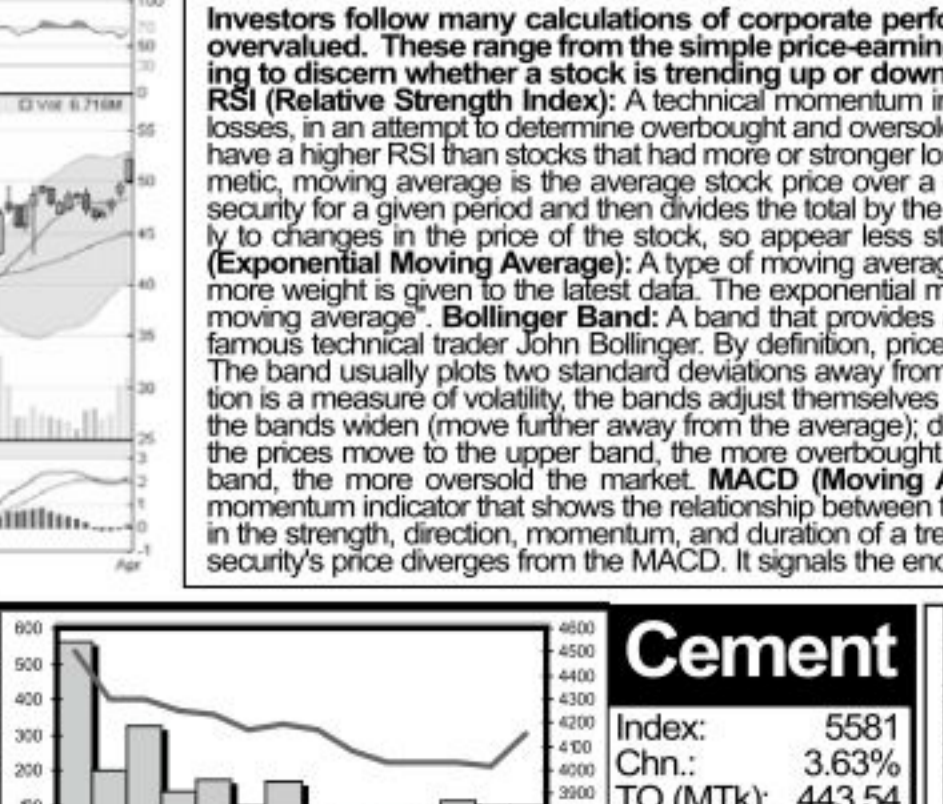
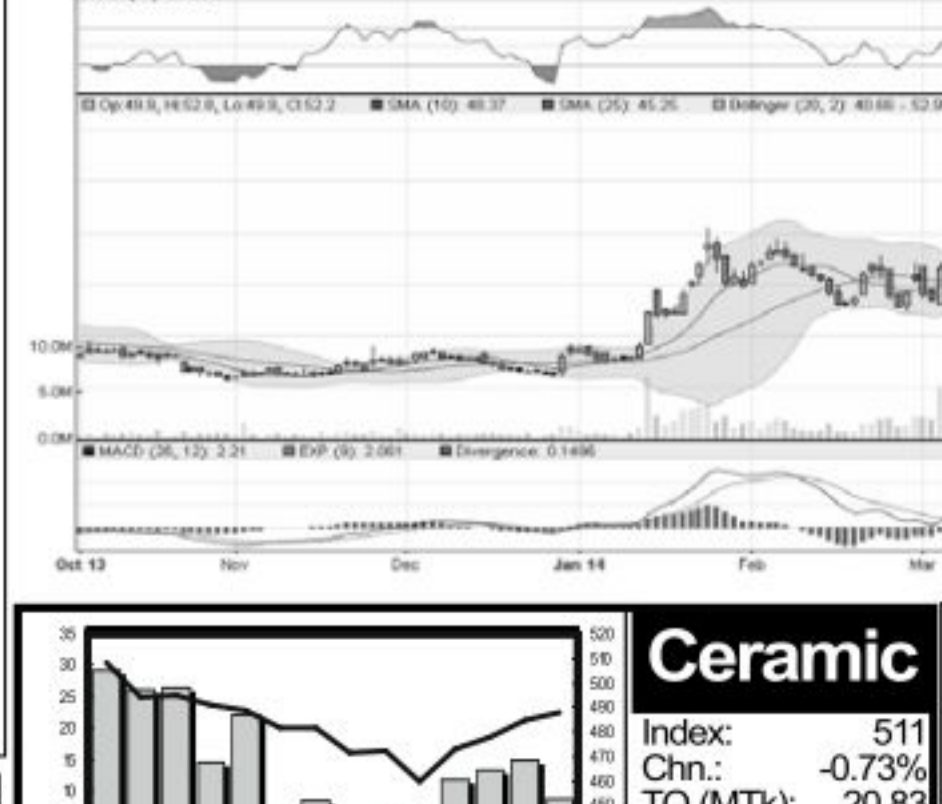


Service. Index: 2654. Chn: -0.25%. TO (MTK): 102.72. Chn: 39.88%. EPS: 18.94. PE: 19.21.

Leather. Index: 6585. Chn: 1.70%. TO (MTK): 78.19. Chn: -23.56%. EPS: 109.27. PE: 19.73.

Misc. Index: 7514. Chn: -0.42%. TO (MTK): 152.12. Chn: -12.51%. EPS: 28.60. PE: 14.09.

InfoTech. Index: 7852. Chn: 0.07%. TO (MTK): 17.89. Chn: -18.37%. EPS: 12.25. PE: 19.83.



Ceramic

Ceramic. Index: 511. Chn: -0.73%. TO (MTK): 443.54. Chn: 25.21%. EPS: 51.93. PE: 16.44.

Cement

Cement. Index: 5581. Chn: 3.63%. TO (MTK): 443.54. Chn: 25.21%. EPS: 51.93. PE: 16.44.

Genlms

Genlms. Index: 9009. Chn: 0.02%. TO (MTK): 75.42. Chn: 61.94%. EPS: 44.75. PE: 22.34.

Lifeln

Lifeln. Index: 136337. Chn: 0.13%. TO (MTK): 76.20. Chn: -3.82%. EPS: 44.75. PE: 30.15.

Notes: Capital Gainer / Loser tables are prepared on the basis of the close price change of the traded issues. "Clo" is the Closing Price of the Day. "Chn %" indicates the price difference in percentage. "Avg" prices indicate weighted average prices of all transactions of the last day. P/E is the Average price of previous day. "D Hi" and "D Lo" indicate the highest and lowest transacted price of the day. "Yr Hi" and "Yr Lo" indicate the highest and lowest transacted price last one running year, everyday the range moves by one day. "NAV"=Net Asset Value Per Share. EPS is based on available latest audited accounts of the companies. EPS & Book value per share are diluted at Book Closing date whenever it is applicable. Only the positive earning companies are considered in calculating the P/E and EPS of the Sectors and Stock Exchanges. For latest EPS and PE corresponding report is mentioned in "RT" column. Report note details are: Q1=1st Quarter, HY=Half Yearly, Q3= upto 3rd Quarter, Ad=Audited. Here all EPS are annualized and shown and used in PE calculation. For all company wise PE calculation average price is used. Companies having negative EPS showed PE as "-"ve" means negative. Sectoral Index Graphs: Sectoral Index are taken from CSE and turnover is the combined turnover of the two stock exchanges. Only DSE sectoral EPS and PE are show in the sectoral graph.