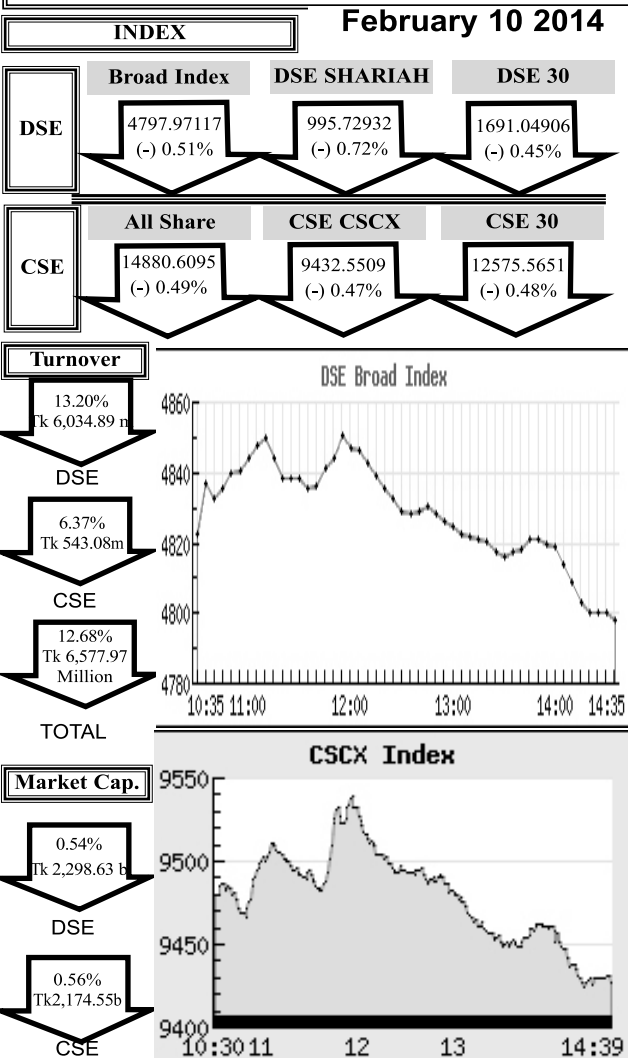


Capital Market Highlights:



Key Features - February 10, 2014

Indicators	DSE	CSE	TOTAL
Turnover (Million Taka)	6,034.89	543.08	6,577.97
Turnover (Volume)	111,725,375	12,350,539	124,075,914
No. of Contract	121,900	18,436	140,336
Traded Issues	291	228	291
Issue Gain (Avg. Price Basis)	69	65	69
Issue Loss (Avg. Price Basis)	216	160	216
Unchanged Issue (Avg. Price Basis)	6	2	6
Market Cap. Equity (Billion. Tk.)	2,298.63	2,174.55	2,298.63
Market Cap. Equity (Billion US\$)	27.86	26.36	27.86

Combined Turnover Leaders

Company	Volume (Share)	Value (M. Taka)	%of Total	Average Price
Square Pharma -A	1607369	410.87	5.45	255.62
BD Submarine Cable-A	1954844	385.35	5.12	197.13
Olympic Ind. -A	1344260	257.51	3.42	191.56
Meghna Petroleum -A	860890	242.59	3.22	281.79
LankaBangla Fin. -A	2499585	181.50	2.41	72.61
BD Building Systems -A	2274575	165.71	2.20	72.85
Jamuna Oil -A	692094	162.81	2.16	235.24
Aftab Auto -A	1702180	162.06	2.15	95.21
Envoy Textiles Ltd-N	3178625	158.12	2.10	49.75
Padma Oil Co. -A	416684	140.39	1.86	336.91
Grameenphone-A	671600	140.27	1.86	208.86
Orion Pharma-N	1917880	128.31	1.70	66.9
Confidencement-A	838101	127.38	1.69	151.98
Navana CNG-A	1617804	116.27	1.54	71.87
Renata Ltd. -A	110807	107.26	1.42	967.95
UCBL -A	3546572	103.04	1.37	29.05
Delta Life Insu. -A	381300	101.12	1.34	265.19
Singer BD -A	424086	99.02	1.31	233.48
aamra technologies-A	2265925	96.37	1.28	42.53
Summit Purbanchol Power-N	1226060	90.98	1.21	74.21
Active Fine Chem.-A	956119	90.62	1.20	94.78
JMI Syringes MDL-A	387500	86.59	1.15	223.45
Generation Next Fashions-A	2567160	86.28	1.15	33.61
Brac Bank -A	2519032	85.59	1.14	33.98
Apex Footwear-A	160800	85.56	1.14	532.11
UNITED AIR-A	5146260	83.24	1.11	16.18
Appollo Ispat CL -N	2489400	81.22	1.08	32.63
Unique Hotel RL -A	856670	77.06	1.02	89.96
RAK Ceramics-A	1198827	75.03	1.00	62.59
Summit Power -A	1486279	72.02	0.96	48.45

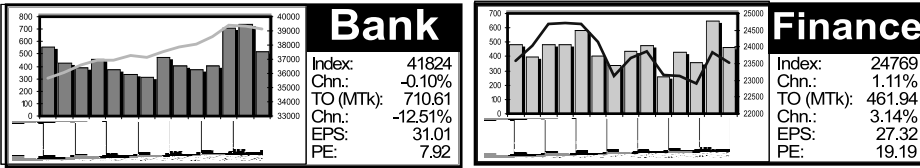
Sectoral Turnover Summary

Sector	DSE		CSE		Total	
	Mill. (Tk)	%	Mill. Tk.	%	Mill. Tk.	%
Bank	633.36	10.49	77.25	14.21	710.61	10.80
NBFI	425.98	7.06	35.96	6.62	461.94	7.02
Investment	139.69	2.31	6.43	1.18	146.12	2.22
Engineering	560.88	9.29	104.33	19.19	665.21	10.11
Food & Allied	327.53	5.43	16.50	3.04	344.04	5.23
Fuel & Power	893.14	14.80	38.93	7.16	932.06	14.17
Jute	1.52	0.03	0.00	0.00	1.52	0.02
Textile	474.16	7.86	40.96	7.54	515.12	7.83
Pharma & Chemical	902.85	14.96	62.14	11.43	964.99	14.67
Paper & Packaging	0.81	0.01	0.27	0.05	1.08	0.02
Service	40.66	0.67	4.06	0.75	44.72	0.68
Leather	72.14	1.20	2.50	0.46	74.64	1.13
Ceramic	62.80	1.04	14.39	2.65	77.19	1.17
Cement	315.33	5.23	10.34	1.90	325.67	4.95
Information Technology	92.19	1.53	18.73	3.45	110.92	1.69
General Insurance	124.32	2.06	7.73	1.42	132.05	2.01
Life Insurance	366.93	6.08	21.18	3.90	388.11	5.90
Telecom	353.92	5.86	40.68	7.48	394.61	6.00
Travel & Leisure	139.53	2.31	22.12	4.07	161.65	2.46
Miscellaneous	106.02	1.76	19.04	3.50	125.06	1.90
Debtenture	1.12	0.02	0.03	0.01	1.15	0.02

Sectoral P/E & EPS

Sector	P/E		EPS(%)	
	DSE	CSE	DSE	CSE
Bank	7.92	7.91	31.01	31.01
NBFI	19.19	19.03	27.32	27.67
Investment	9.28	9.33	10.26	10.26
Engineering	24.35	24.32	27.75	26.91
Food & Allied	34.79	34.53	106.86	107.71
Fuel & Power	13.41	13.24	63.49	63.49
Textile	14.02	13.34	22.34	22.28
Pharma. & Chemical	29.21	28.35	52.26	46.20
Paper & Printing	33.43	33.32	8.39	8.92
Service	20.24	20.30	20.26	20.26
Leather	19.64	20.05	108.57	130.73
Ceramic	26.94	26.91	15.80	15.80
Cement	18.43	18.37	45.10	45.10
IT	22.02	21.96	12.25	12.25
General Insurance	19.95	19.94	22.04	22.79
Life Insurance	31.80	31.47	44.75	44.75
Telecom	16.86	16.87	122.50	122.50
Travel & Leisure	17.92	20.12	22.93	21.72
Miscellaneous	14.35	14.43	28.75	28.00
Stock Exchanges	14.71	14.43	35.83	35.64

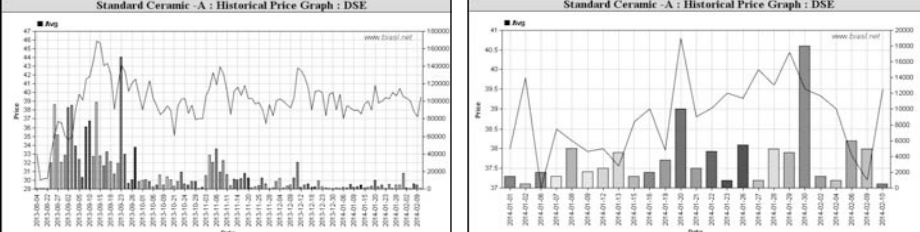
Prepared exclusively for Daily Star by **Business Information Automation Service Line (BIASL)**, on the basis of information collected from daily stock quotations and audited reports of the listed companies. High level of caution has been taken to collect and present the above information and data. The publisher will not take any responsibility if any body uses this information and data for his/her investment decision. For any query please email to biasl@bol-online.com or send SMS to 01552153562 or go to www.biasl.net



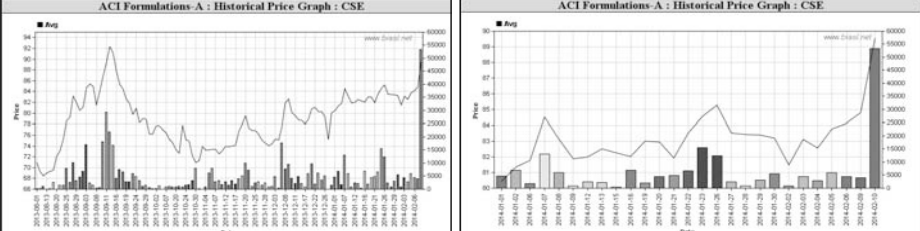
Capital Gainers

Dhaka Stock Exchange

Company	Price Chn. (%)		Price Scale					T over	Audited		Latest				
	Clo	Avg.	Avg.	Clo	D Hi	D Lo	Yr Hi	YrLo	M.Tk	NAV	EPS	PE	PER		
Standard Ceramic -A	6.47	6.18	39.50	39.50	39.50	39.50	47.8	19.9	0.020	15.49	1.12	35.3	1.06	37.3	HY
Meghna Con. Milk -B	5.77	4.56	11.01	11.01	11.40	10.60	17.2	6.5	0.534	-23.7	-7.48	-ve	-4.58	-ve	HY
GlaxoSK (BD) -A	5.66	3.35	1,149.43	1,170.10	1,176.60	1,115.00	1178.0470	0.020	230123.3220	25.68	46.69	24.6	Q3		
Bangladesh Lamps -A	4.37	4.26	147.10	148.10	151.60	141.90	193.0	81.0	12.364	37.07	-5.31	-ve	-0.77	-ve	Q3
7th ICB M F-A	4.31	4.31	92.00	92.00	92.00	92.00	115.9	66.0	0.092	98.6	13.53	6.8	13.84	6.6	HY
Sun Life Insurance-N	3.98	3.06	78.74	78.40	80.80	68.00	106.4	44.7	56.154	0	0.00	-	0.00	-	-
PrimeFin. 1st MF-A	3.88	2.65	23.99	24.10	24.40	23.10	28.6	10.9	23.856	11.63	0.64	37.5	1.00	24.0	Q3
Central Pharm-A	3.66	2.18	47.71	48.10	48.40	42.10	54.0	26.8	51.918	12.24	1.62	39.5	1.74	27.4	HY
Padma Islami Life-N	3.62	2.81	96.14	97.30	101.00	85.00	101.0	51.0	95.262	25.76	1.63	59.0	1.10	87.4	HY
Southeast Bank-A	3.60	1.69	22.80	23.00	23.20	20.00	24.4	12.5144	0.420	22.66	1.89	12.1	2.24	10.2	Q3



Chittagong Stock Exchange															
ACI Formulations-A	4.99	5.63	89.57	88.40	91.80	86.90	96.0	65.1	4.779	38.08	3.33	26.9	2.13	42.1	Q3
Delta Brac HFCL-A	4.62	4.49	70.52	70.20	71.50	69.00	74.0	48.0	0.705	21.27	4.47	15.8	3.46	20.4	HY
MutualTrust Bank-A	4.44	4.44	18.80	18.80	18.80	18.80	22.7	13.2	0.009	17.27	1.17	16.1	-0.52	-ve	Q3
Prime Insur -A	4.21	4.21	39.60	39.60	39.80	39.40	46.2	25.8	0.040	14.14	2.14	18.5	2.36	16.8	Q3
Sun Life Insurance-N	3.71	3.75	78.64	78.30	81.00	75.50	99.9	45.0	3.588	0	0.00	-	0.00	-	-
Padma Islami Life-N	3.45	4.68	96.54	95.90	99.90	100.00	99.9	50.0	2.630	25.76	1.63	59.2	1.10	87.8	HY
PrimeFin. 1st MF-A	3.43	2.18	23.87	24.10	24.10	23.40	28.5	10.3	0.728	11.63	0.64	37.3	1.00	23.9	Q3
LankaBangla Fin. -A	3.38	1.85	73.88	73.50	76.20	70.50	82.5	30.0	18.243	31.07	1.61	45.9	2.75	26.9	Q3
IBBLMPB-A	3.34	3.35	1006.00	1006.00	1006.00	1006.00	1015.0	886.0	0.025	1000	0.00	-	0.00	-	-
MeghnaCement-A	3.32	2.21	158.61	158.60	159.00	155.00	181.7	85.0	0.428	33.81	6.28	25.3	6.29	25.2	Q3



Food
Index: 10424
Chn.: -0.89%
TO (MTK): 344.04
Chn.: -25.81%
EPS: 106.86
PE: 34.79

Fuel
Index: 11671
Chn.: -1.11%
TO (MTK): 932.06
Chn.: -3.63%
EPS: 63.49
PE: 13.41

Turnover Leaders

Dhaka Stock Exchange

Company	Vol.	Value	% of	Price Scale						Audited			Latest		
	Share	(MTk)	Total	Clo	Chn	PClo	D Hi	D Lo	Avg.	NAV	EPS	PE	EPS	PE	R
Square Pharma -A	1,382,581	361.97	6.00	258.50	-0.35	259.40	270.00	237.00	261.81	37.18	6.93	37.3	11.36	23.0	Q3
Meghna Petroleum -A	891,210	254.82	4.22	283.30	0.11	283.00	290.50	259.00	285.92	59.26	21.34	13.3	22.36	12.8	HY
BD Submarine Cable-A	1,011,224	201.83	3.34	196.50	-1.75	200.00	217.00	185.00	199.59	26.38	5.82	33.8	3.28	60.9	HY
Olympic Ind. -A	972,164	188.77	3.13	191.30	-1.39	194.00	196.70	180.00	194.18	14.73	5.23	36.6	6.90	28.1	HY
Jamuna Oil -A	792,190	185.31	3.07	232.30	-2.11	237.30	238.00	231.80	233.92	57.32	19.63	11.7	16.90	13.8	HY
Grameenphone-A	733,800	152.10	2.52	206.00	-0.91	207.00	208.60	205.30	207.27	26.26	12.96	15.9	10.57	19.6	Q3
LankaBangla Fin. -A	1,990,316	146.11	2.42	73.50	2.65	71.60	75.60	65.00	73.41	31.07	1.61	45.7	2.75	26.7	Q3
Southeast Bank-A	6,334,127	144.42	2.39	23.00	3.60	22.20	23.20	20.00	22.80	22.66	1.89	12.2	2.24	10.2	Q3
HeidelbergCement-A	377,340	133.46	2.21	438.90	0.16	438.20	453.00	436.00	447.03	111.50	2.85	19.2	29.19	15.3	Q3
Padma Oil Co. -A	388,895	132.59	2.20	337.60	-0.38	339.00	345.00	320.00	340.93	64.31	25.11	13.4	20.68	16.5	HY
Renata Ltd. -A	137,296	132.38	2.19	953.20	-0.83	971.00	990.10	940.00	964.17	136.83	33.57	28.4	41.39	23.3	Q3
Delta Life Insu. -A	456,050	122.50	2.03	265.70	0.91	263.30	272.00	265.00	268.60	189.40	38.53	6.9	0.00	-	-
Aftab Auto-A	1,191,178	116.38	1.93	96.50	0.31	96.20	105.00	86.70	97.70	50.81	3.60	26.8	3.24	30.2	Q1
Padma Islami Life-N	990,860	95.26	1.58	97.30	3.62	93.90	101.00	85.00	96.14	25.76	1.63	59.7	1.10	87.4	HY
Unique Hotel RL -A	1,003,385	91.40	1.51	90.30	0.10	89.40	92.30	81.00	91.09	86.29	4.02	22.5	3.56	25.6	Q3
Confidencement-A	529,686	79.80	1.32	150.20	-0.80	149.30	152.50	147.00	150.65	90.76	6.23	24.1	7.44	20.2	Q3
Active Fine Chem.-A	780,800	73.47	1.22	93.70	-0.11	93.80	95.40	88.00	94.09	13.89	3.23	29.0	5.25	17.9	Q3
Generation Nest Fashions-A	2,220,620	72,631.20	32.50	-2.69	33.40	33.70	31.00	32.71	15.15	1.68	19.3	2.25	14.5	Q3	
Orion Pharma-N	1,079,480	71.69	1.19	65.60	-1.80	66.80	67.50	60.30	66.41	68.80	5.02	13.1	4.40	15.1	Q3
BD Building Systems-A	979,250	70.64	1.17	71.20	-2.33	72.90	73.50	66.00	72.13	13.70	1.33	53.5	2.92	24.7	HY