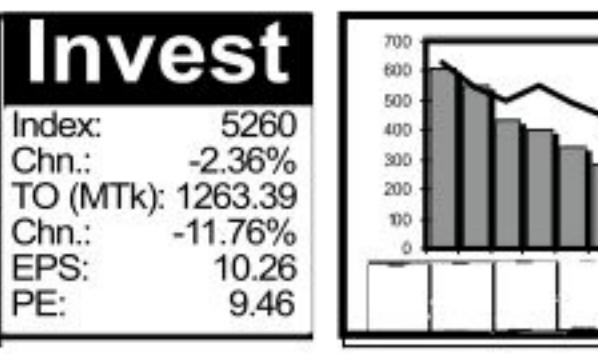
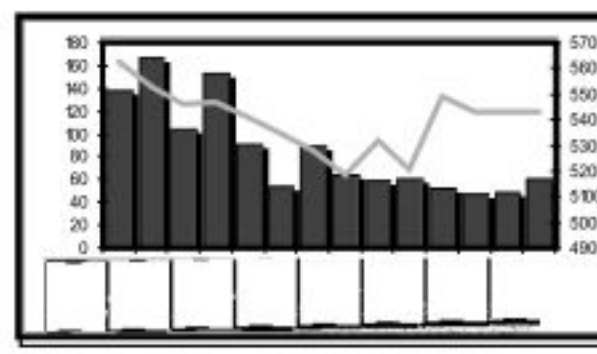
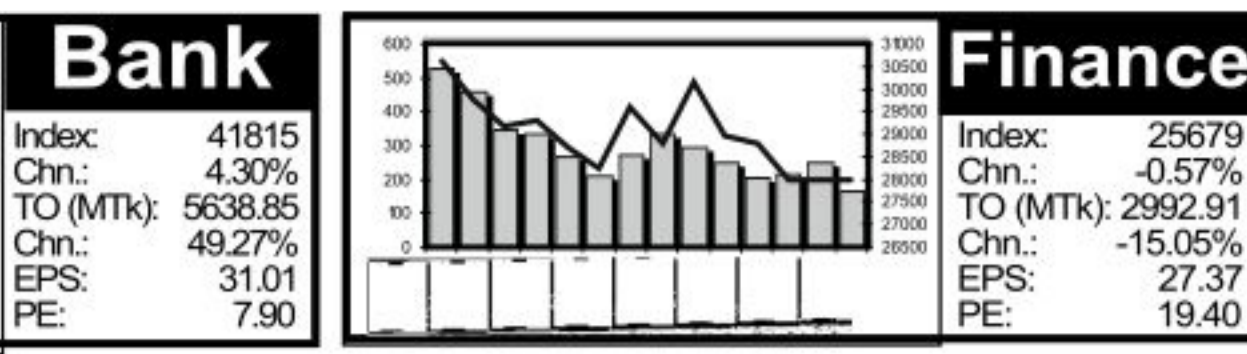
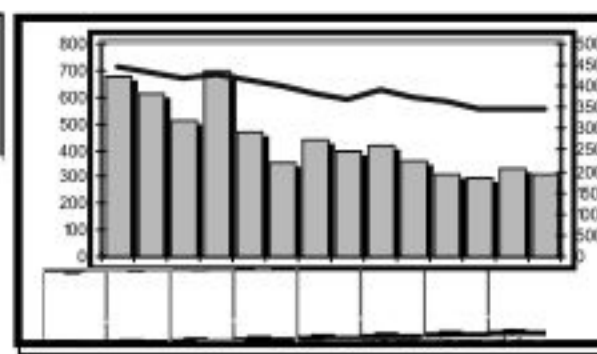
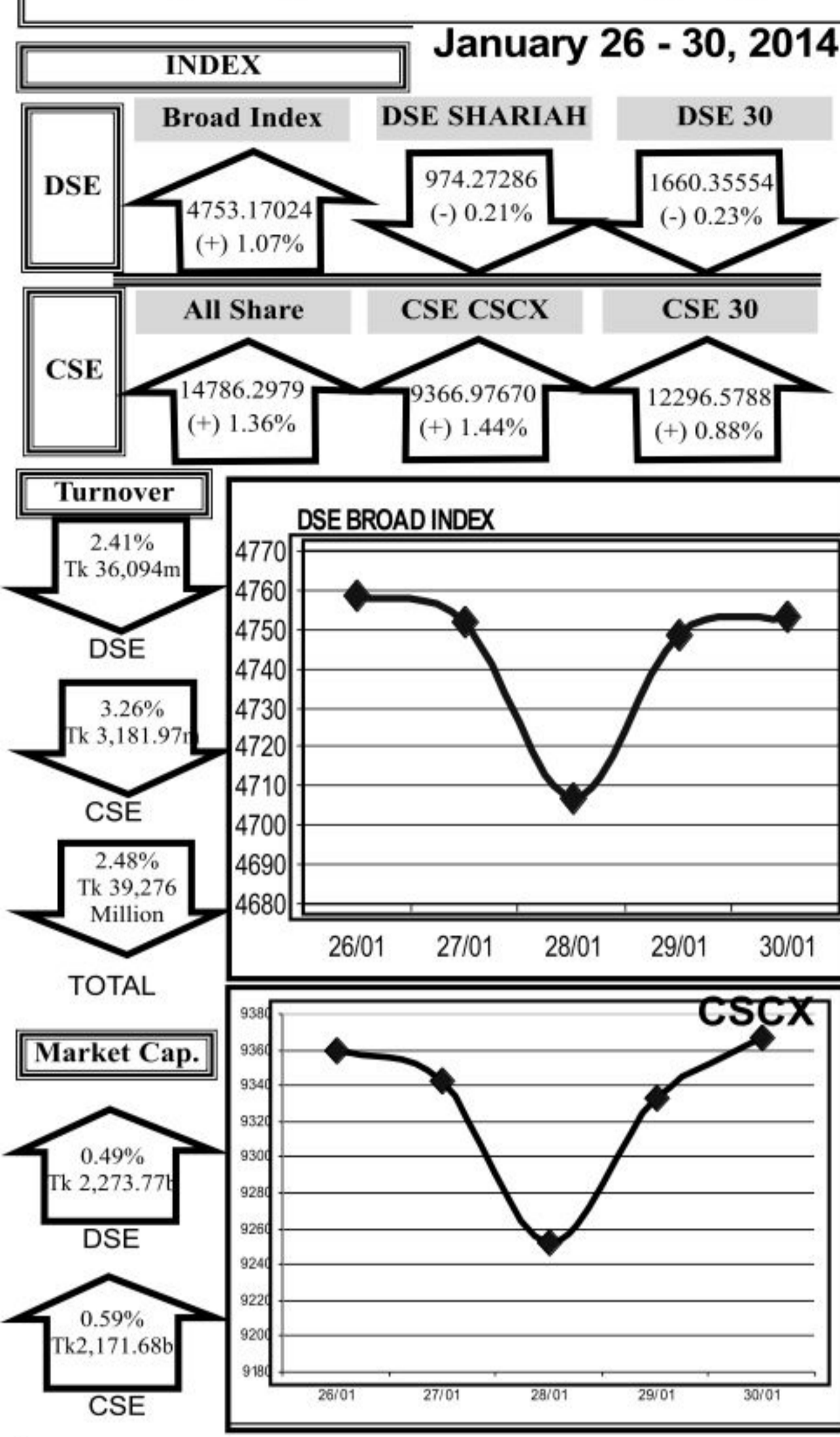


**Weekly Capital Market Highlights:**



**Capital Gainers**

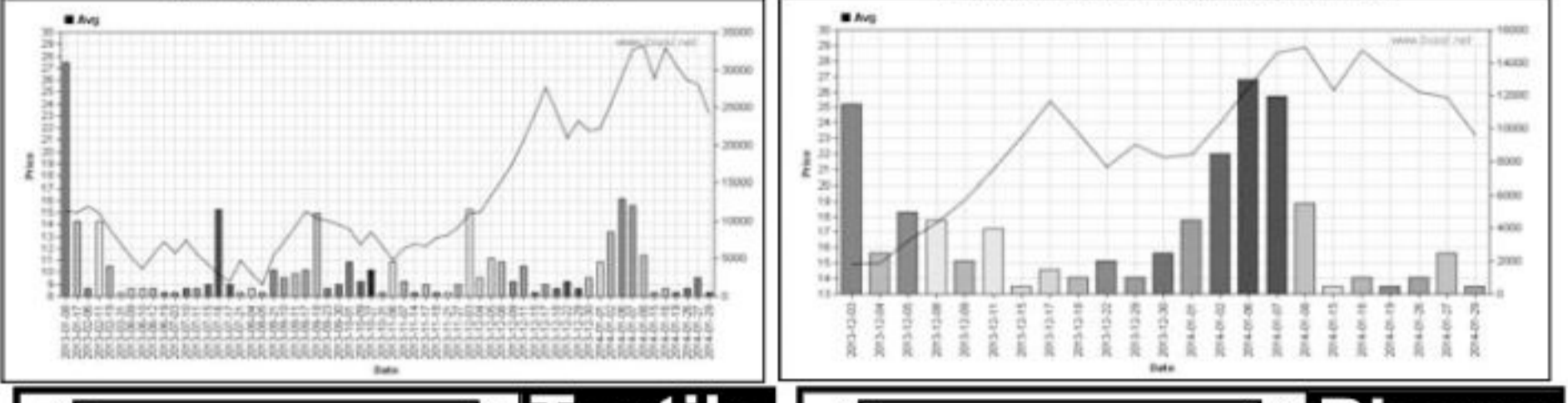
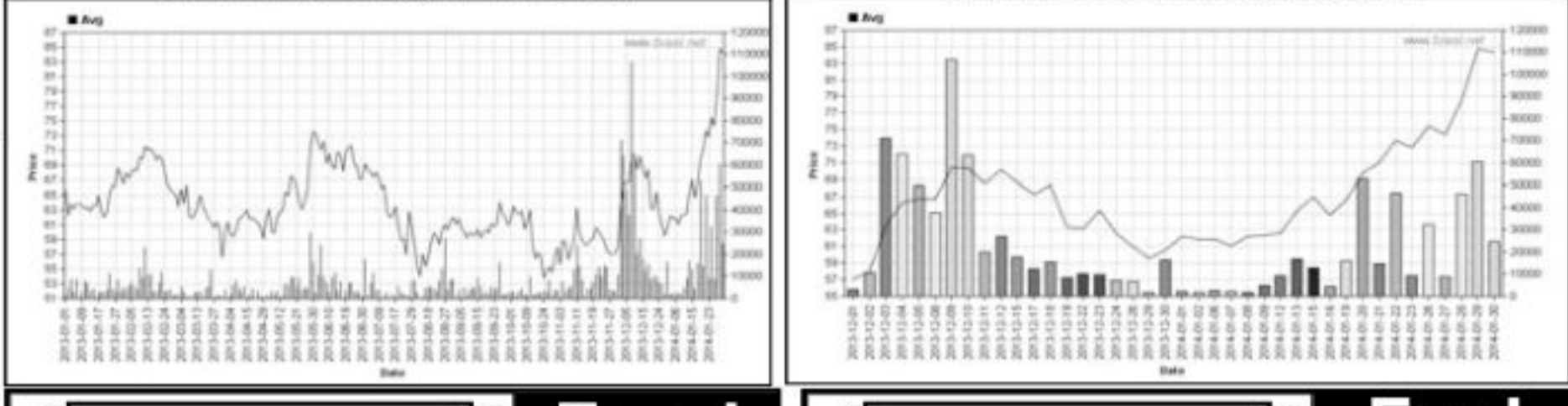
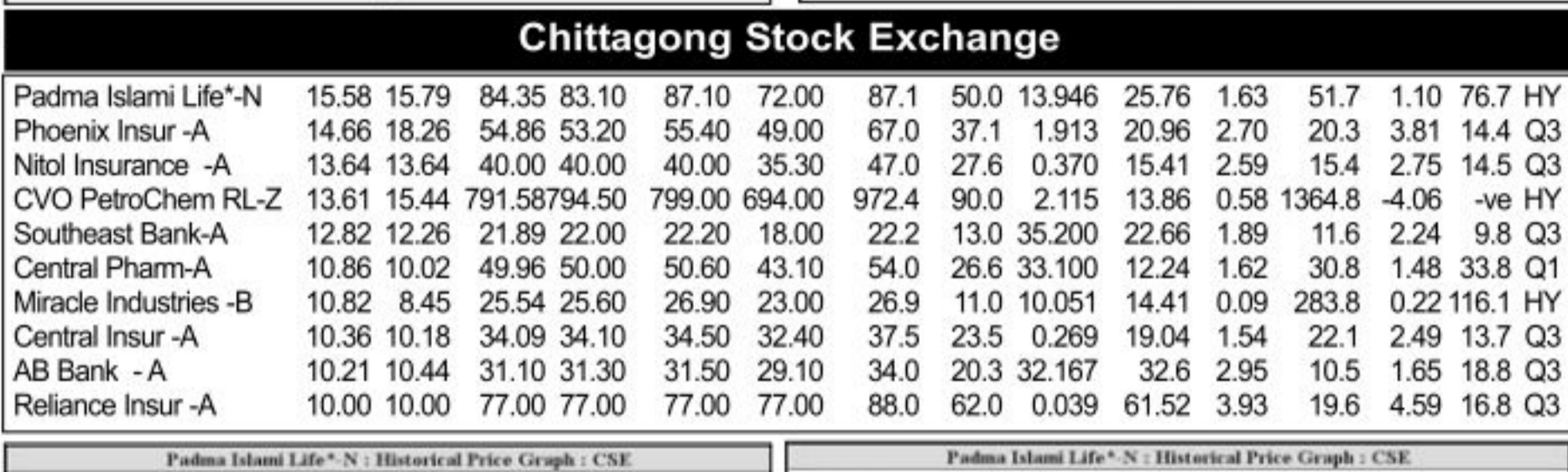
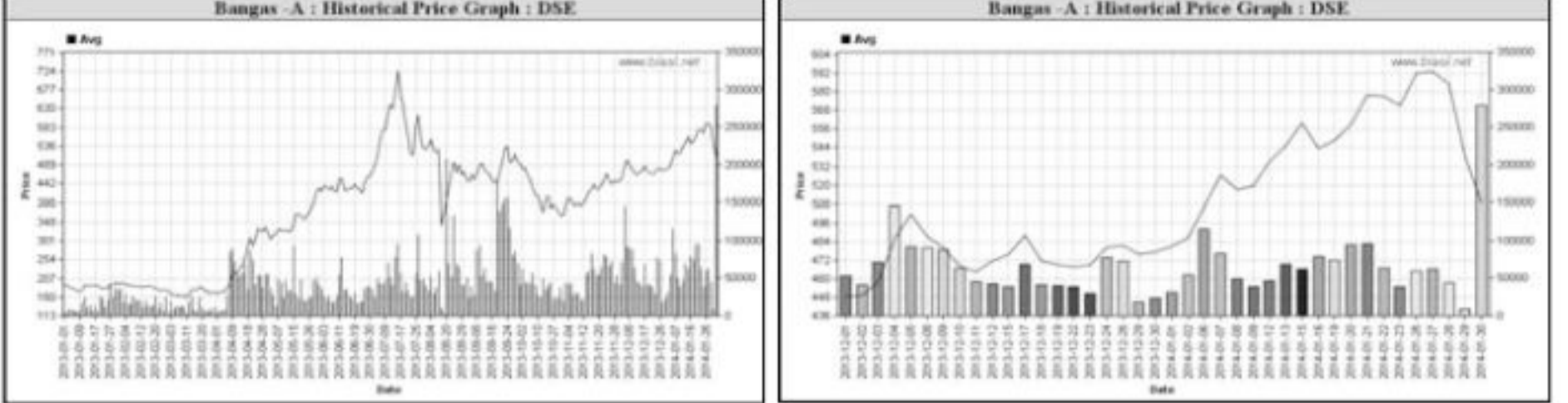
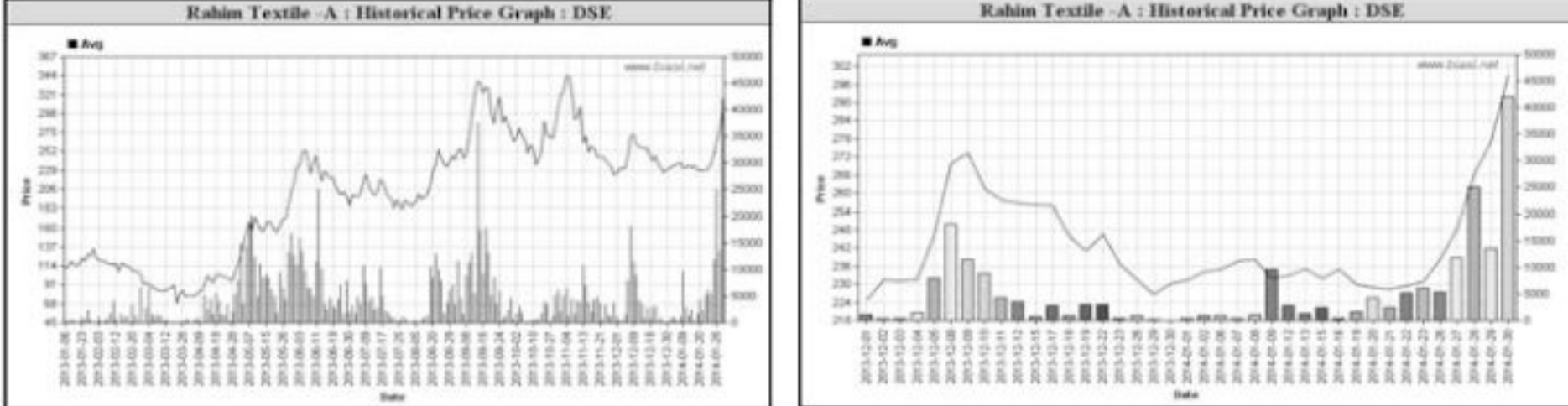
**Dhaka Stock Exchange**

Company	Price Chn. (%)		Price Scale					T'over	Audited		Latest				
	Clo	Av	W	H	Lo	Lo	NAV		EPS	PE	EPS	PE			
Rahim Textile -A	30.70	29.51	299.05	302.30	302.40	233.50	360.0	76.0	27.232	56.68	4.65	64.3	11.56	25.9	HY
Stylecraft -A	16.27	16.13	1,059.09	1,059.30	1,065.10	940.00	1398.9600	0.1745	287.3	20.00	53.0	47.83	22.1	Q3	
Padma Islami Life-N	15.88	14.95	84.36	83.90	92.00	68.90	92.0	51.0243	45.8	25.76	1.63	51.8	1.10	76.7	HY
Phoenix Insur -A	14.71	14.76	53.71	53.80	54.20	44.90	68.1	35.5	97.112	20.96	2.70	19.9	3.81	14.1	Q3
BATBCL -A	13.62	13.88	1,935.79	1,929.00	1,946.90	1,685.00	1946.9850	0.0505	291117.2265	69.00	29.5	76.51	25.3	Q3	
Libra Inclusions-A	13.10	12.93	484.17	484.20	485.90	420.00	703.3	170.0	2,744,156.759	4.21	215.0	4.88	99.2	Q1	
CVO PetroChem RL-Z	12.34	15.60	772.67	773.00	795.00	649.10	943.7	87.0	76.476	13.86	0.58	133.22	4.06	9.7	HY
Southeast Bank-A	11.22	12.49	21.80	21.80	22.00	18.00	22.0	12.5397	37.4	2.66	1.89	11.5	2.24	9.7	Q3
Central Pharm-A	11.16	9.94	49.87	49.80	51.40	40.40	54.0	26.8358	21.4	12.24	1.62	30.8	1.48	37.7	Q1
Eastern Insur -A	11.00	8.32	44.81	45.40	45.60	38.00	45.8	27.0	36.756	35.88	2.22	20.2	2.60	13.2	Q3

**Capital Losers**

**Dhaka Stock Exchange**

Company	Price Chn. (%)		Price Scale					T'over	Audited		Latest				
	Clo	Av	W	H	Lo	Lo	NAV		EPS	PE	EPS	PE			
Bangas -A	-11.48	-10.99	508.42507	20.00	602.80	498.10	734.0	156.0244	786	50.27	7.2	70.6	5.70	89.2	HY
Apex Tannery -A	-11.03	-12.03	155.49156	50.00	180.50	144.50	183.8	65.1132	996	69.38	6.57	23.7	4.86	32.0	HY
Samata Leather-Z	-10.79	-10.71	25.00	24.80	28.00	23.90	30.0	10.7	0.730	12.93	0.22	113.6	-0.08	-ve Q1	
Bengal Windsor-A	-9.81	-10.02	63.15	62.50	75.00	55.00	76.4	40.3453	312	24.3	3.85	16.4	2.50	25.3	HY
Shampur Sugar-Z	-9.30	-7.19	8.00	7.80	8.50	7.70	10.1	6.2	0.045	-396.49	-45.77	-ve	-50.84	-ve HY	
Samoria Hospital-A	-9.30	-6.78	92.76	92.60	105.00	86.00	146.9	47.0	25.000	57.42	2.49	37.3	2.74	33.9	HY
Savar Refractories-Z	-8.68	-9.30	60.00	61.00	63.10	60.20	106.9	36.0	0.150	10.57	0.14	428.6	0.60	100.0	Q3
PrimeFin. 1st MF-A	-8.56	-7.15	23.94	23.60	26.50	22.70	28.6	10.9113	683	11.63	0.64	37.3	1.00	23.9	Q3
Padma Oil Co. -A	-7.46	-6.05	332.24328	60.00	356.80	315.00	492.0	155.0109	417	64.31	25.11	13.2	20.68	16.1	HY
Golden Harvest Agro-N	-6.67	-4.50	43.09	42.00	48.00	39.80	84.0	28.2255	313	24.36	2.31	18.7	1.62	26.6	HY



**Key Features - January 26 - 30, 2014**

Indicators	DSE	CSE	TOTAL
Turnover (Million Taka)	36,093.51	3,181.97	39,275.48
Turnover (Volume)	863,928,848	95,760,577	959,689,425
No. of Contract	732,909	115,913	848,822
Traded Issues	300	248	300
Issue Gain (Avg. Price Basis)	159	137	159
Issue Loss (Avg. Price Basis)	137	109	137
Unchanged Issue (Avg. Price Basis)	4	1	4
Market Cap. Equity (Billion Tk.)	2,273.77	2,171.68	2,273.77
Market Cap. Equity (Billion US\$)	27.56	26.32	27.56

