

Capital Market Highlights:

INDEX September 01 2013. Broad Index: 4140.30469 (+0.31%). DSE 30: 1544.88878 (+0.32%). All Share: 12760.8039 (+0.15%). CSE CSCX: 8063.3594 (+0.12%). CSE 30: 10535.9854 (+0.05%). Turnover: 0.99% Tk5,412.38m. DSE: 6.27% Tk 388.95m. CSE: 0.48% Tk 5,801.33 Million. Market Cap: 0.77% Tk 2,054.57. DSE: 0.45% Tk1,972.5b. CSE: 0.77% Tk 2,054.57.

Bank Index: 32744 Chn: -0.22%. TO (MTK): 190.13 Chn: 3.66%. EPS: 31.01 PE: 6.28

Finance Index: 21116 Chn: 3.40%. TO (MTK): 291.35 Chn: 100.65%. EPS: 31.02 PE: 18.14

Invest Index: 4928 Chn: 0.79%. TO (MTK): 163.78 Chn: 81.10%. EPS: 10.29 PE: 8.88

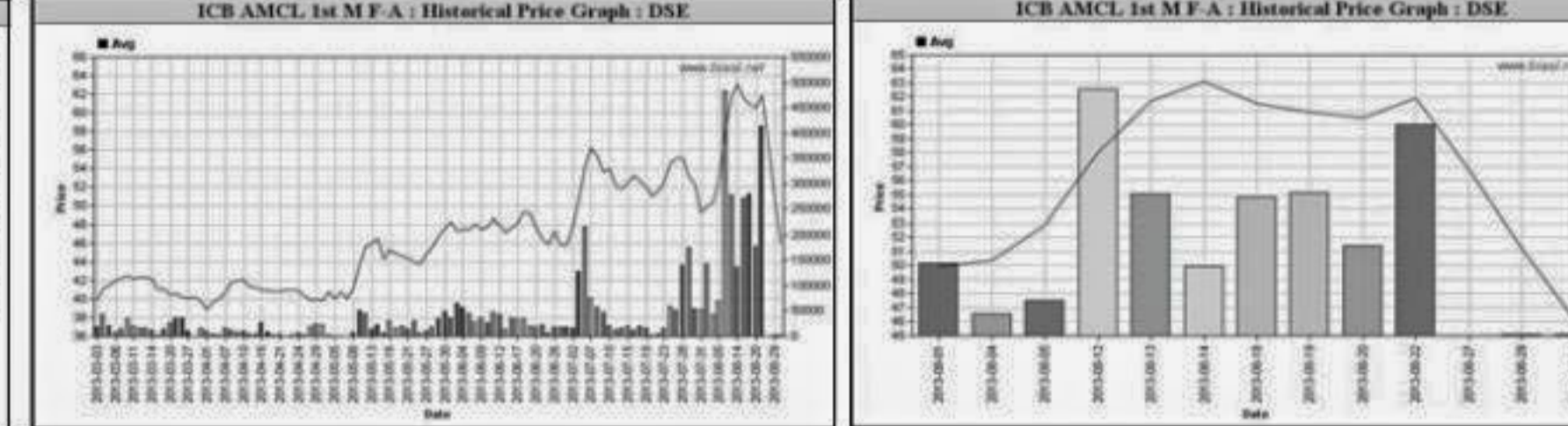
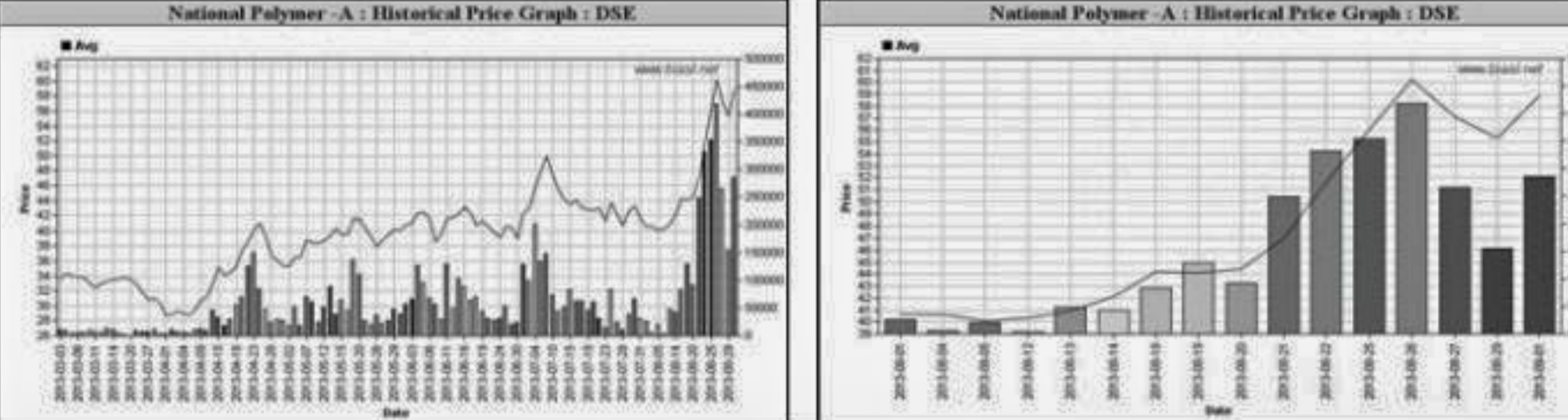
Engg Index: 6264 Chn: -0.73%. TO (MTK): 496.47 Chn: 7.02%. EPS: 34.19 PE: 22.72

Capital Gainers

Table of Capital Gainers from Dhaka Stock Exchange. Columns: Company, Price Chn. (%), Price Scale, Tover, Audited, Latest. Top gainers include JMI Syringes MDL-A (10.00%), National Polymer-A (9.96%), and Central Pharm-N (9.94%).

Capital Losers

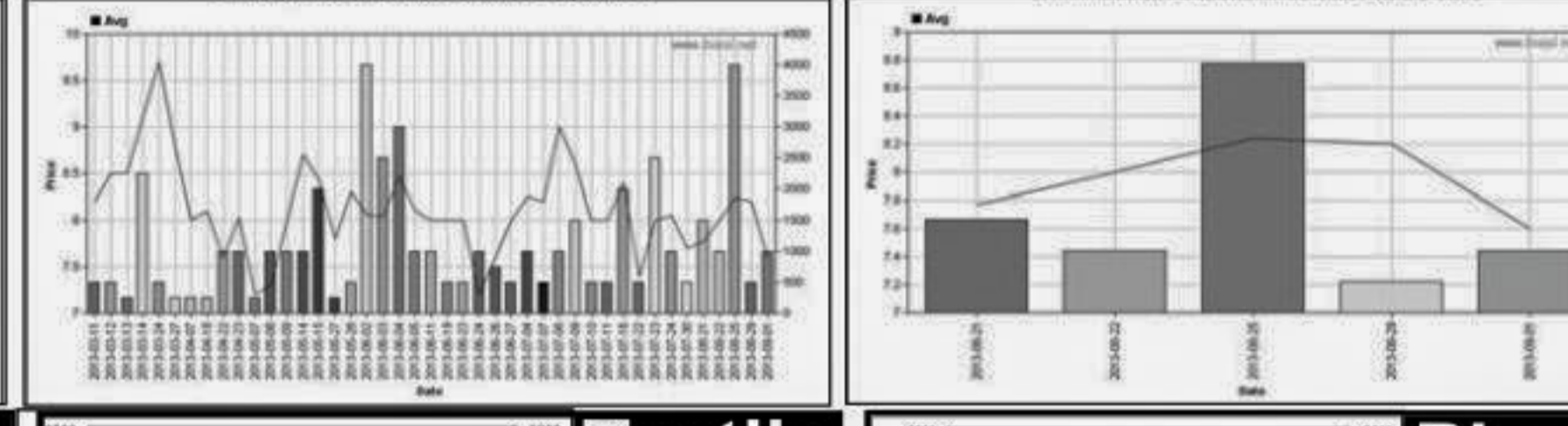
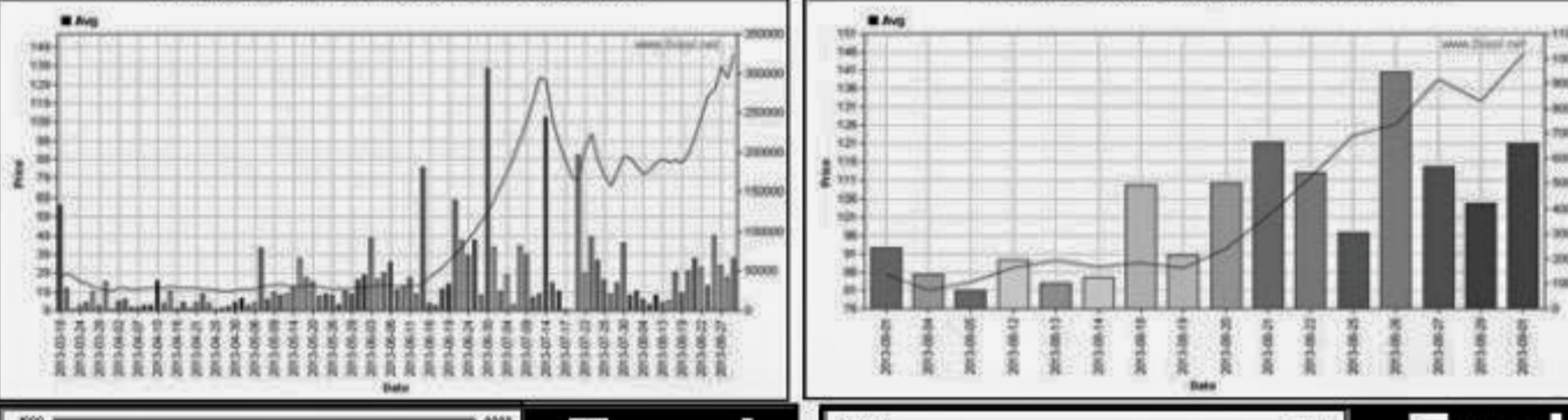
Table of Capital Losers from Dhaka Stock Exchange. Columns: Company, Price Chn. (%), Price Scale, Tover, Audited, Latest. Top losers include ICB AMCL 1st M F-A (-9.96%), The Ibn SinaA (-7.40%), and Monno Staffers-A (-6.93%).



Chittagong Stock Exchange

Table of Chittagong Stock Exchange Capital Gainers. Columns: Company, Price Chn. (%), Price Scale, Tover, Audited, Latest. Top gainers include Central Pharm-N (10.00%) and JMI Syringes MDL-A (9.96%).

Table of Chittagong Stock Exchange Capital Losers. Columns: Company, Price Chn. (%), Price Scale, Tover, Audited, Latest. Top losers include Paramount Insur-A (-9.79%) and The Ibn SinaA (-8.99%).



Key Features - September 01, 2013

Table of Key Features. Columns: Indicators, DSE, CSE, TOTAL. Includes Turnover, Issue Gain, Market Cap, etc.

Food Index: 8651 Chn: 0.69%. TO (MTK): 204.71 Chn: -10.96%. EPS: 127.59 PE: 26.00

Fuel Index: 11001 Chn: -0.48%. TO (MTK): 662.03 Chn: -0.08%. EPS: 60.60 PE: 13.69

Textile Index: 3135 Chn: 0.91%. TO (MTK): 799.44 Chn: -5.47%. EPS: 22.96 PE: 11.83

Pharm Index: 17185 Chn: -0.50%. TO (MTK): 661.97 Chn: 23.79%. EPS: 52.51 PE: 23.46

Turnover Leaders

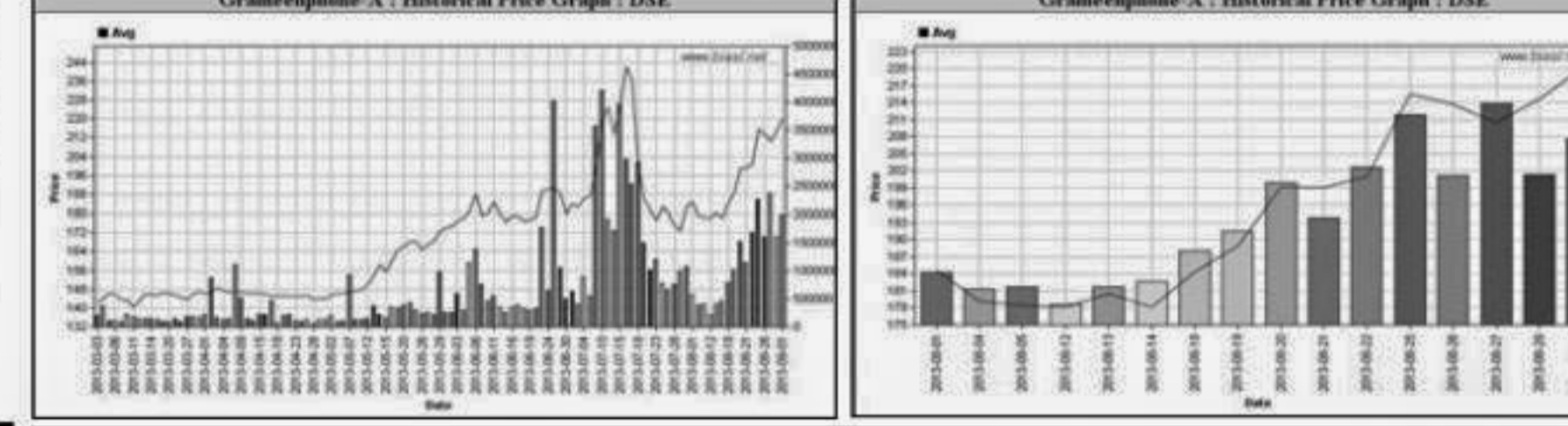
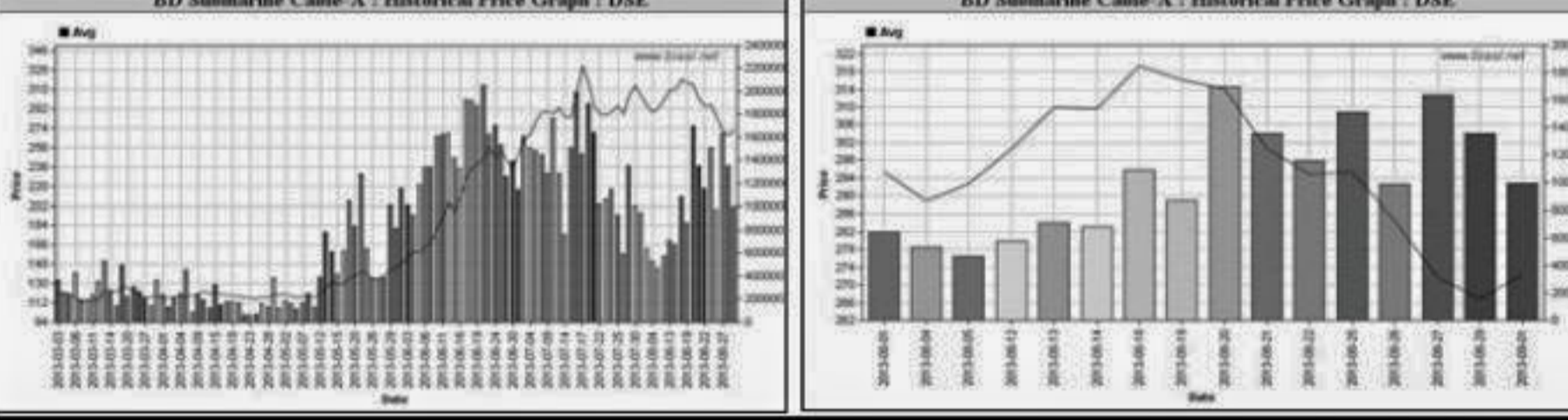
Table of Turnover Leaders from Dhaka Stock Exchange. Columns: Company, Vol. Share, Value (M.Tk), % of Total, Average Price. Top leaders include Grameenphone-A and BD Submarine Cable-A.

Market Cap. Leader

Table of Market Cap. Leaders from Dhaka Stock Exchange. Columns: Company, Market Cap. M. Tk, % of Total, Price Scale, Audited, Latest. Top leaders include Grameenphone-A and ICB A.

Combined Turnover Leaders

Table of Combined Turnover Leaders. Columns: Company, Volume (Share), Value (M. Taka), % of Total, Average Price. Top leaders include Grameenphone-A, BD Submarine Cable-A, and Padma Oil Co.-A.

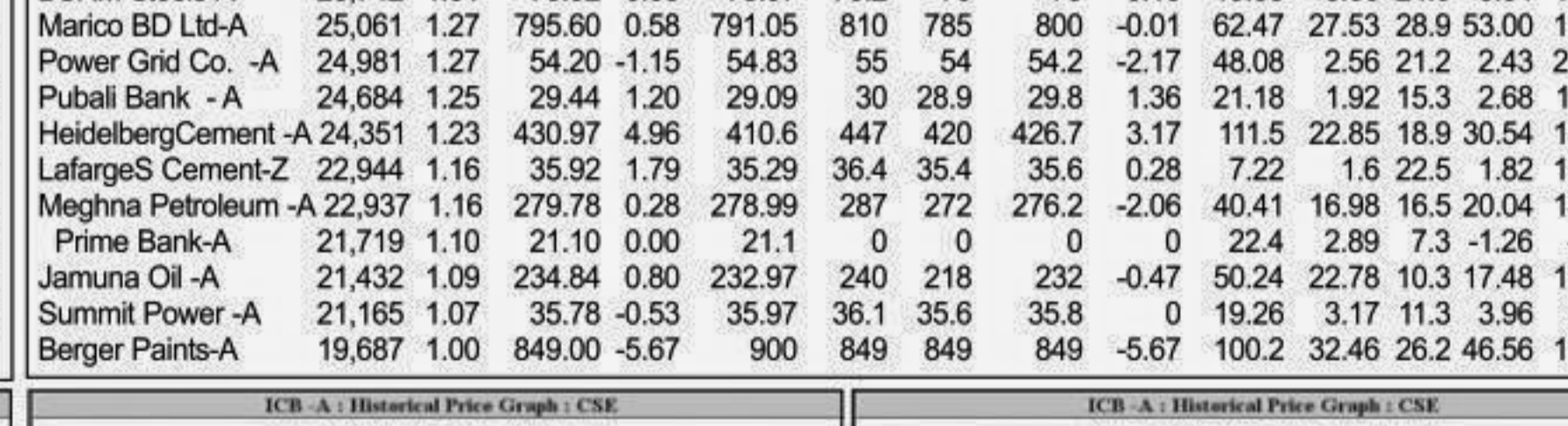
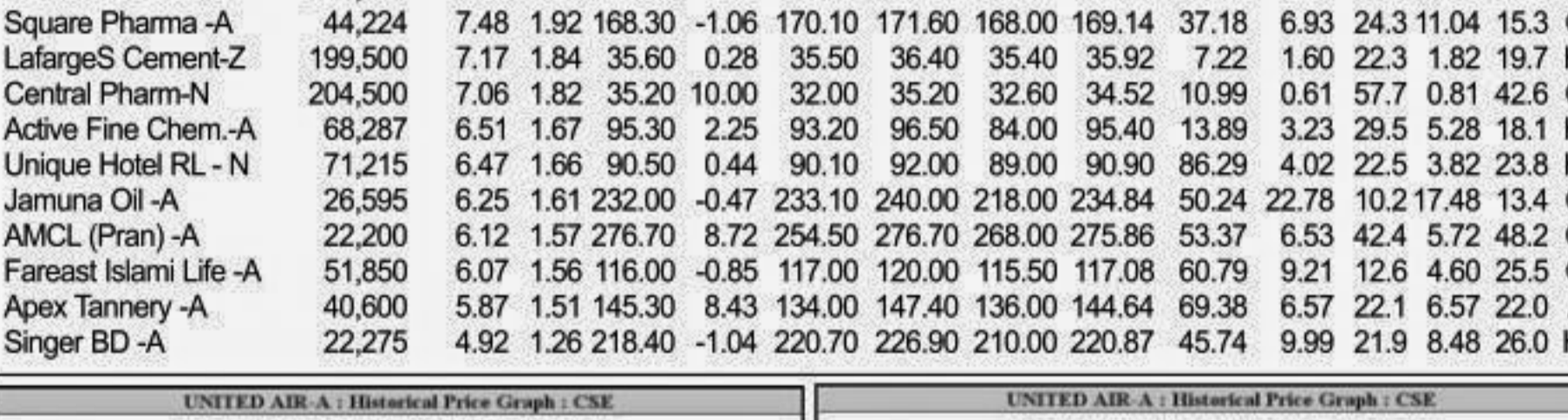


Sectoral Turnover Summary

Table of Sectoral Turnover Summary. Columns: Sector, DSE, CSE, Total. Includes Bank, NBFI, Investment, etc.

Table of Chittagong Stock Exchange Turnover Leaders. Columns: Company, Vol. Share, Value (M.Tk), % of Total, Average Price. Top leaders include Grameenphone-A and UNITED AIR-A.

Table of Chittagong Stock Exchange Market Cap. Leader. Columns: Company, Market Cap. M. Tk, % of Total, Price Scale, Audited, Latest. Top leaders include Grameenphone-A and ICB A.



Sectoral P/E & EPS

Table of Sectoral P/E & EPS. Columns: Sector, P/E, EPS(%). Includes Bank, NBFI, Investment, etc.

Service Index: 3213 Chn: 2.37%. TO (MTK): 22.50 Chn: -23.92%. EPS: 20.17 PE: 18.27

Leather Index: 5641 Chn: -1.25%. TO (MTK): 210.90 Chn: -21.89%. EPS: 121.29 PE: 17.07

Misc Index: 6376 Chn: -1.52%. TO (MTK): 167.74 Chn: -14.90%. EPS: 28.38 PE: 14.25

InfoTech Index: 7599 Chn: 1.67%. TO (MTK): 81.46 Chn: 45.33%. EPS: 13.50 PE: 19.04

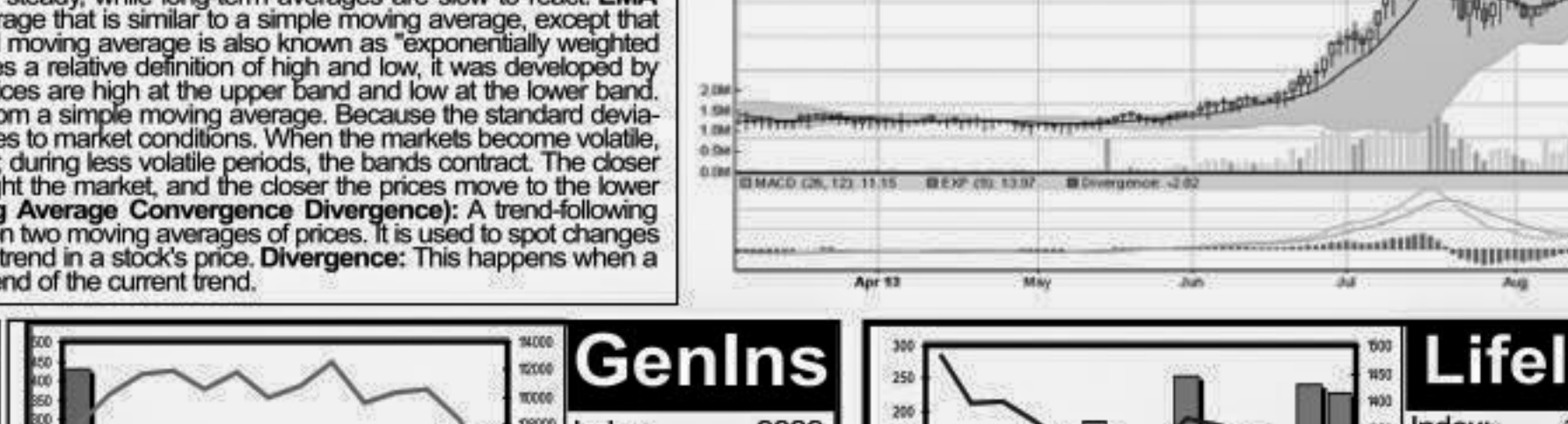
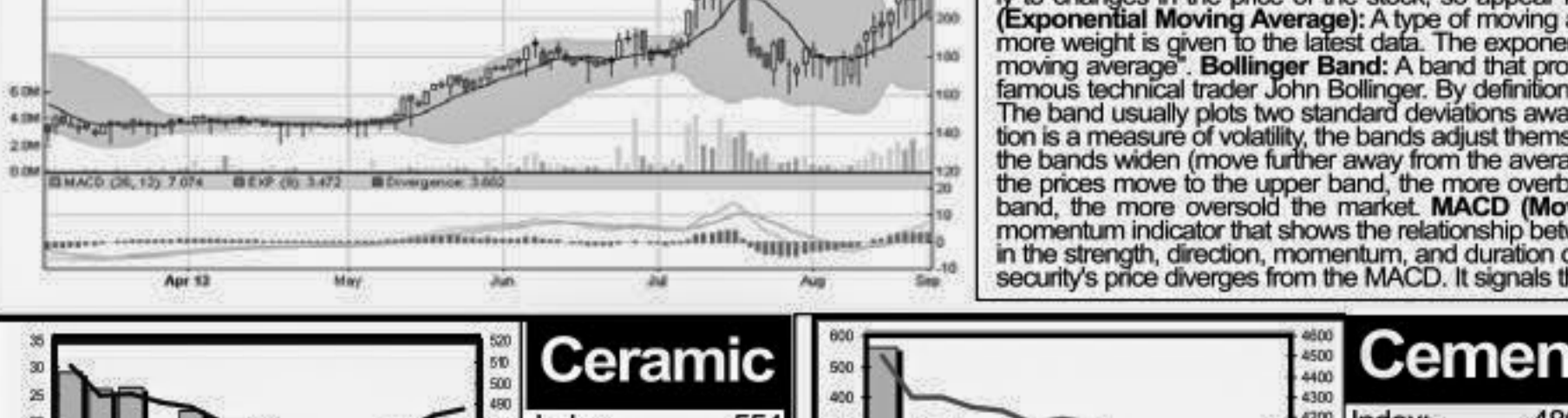


Ceramic Index: 554 Chn: 0.94%. TO (MTK): 80.45 Chn: -16.03%. EPS: 15.70 PE: 26.37

Cement Index: 4861 Chn: 0.69%. TO (MTK): 455.26 Chn: -33.97%. EPS: 43.40 PE: 19.23

Genlns Index: 9339 Chn: -0.59%. TO (MTK): 76.27 Chn: 8.46%. EPS: 48.41 PE: 22.05

Liflins Index: 116387 Chn: 0.96%. TO (MTK): 263.04 Chn: 7.73%. EPS: 48.41 PE: 25.86



Prepared exclusively for Daily Star by Business Information Automation Service Line (BIASL) on the basis of information collected from daily stock quotations and audited reports of the listed companies.

Notes: Capital Gainer / Loser tables are prepared on the basis of the close price change of the traded issues. 'Cln' is the Closing Price of the Day. 'Chn %' indicates the price difference in percentage. 'Avg' prices indicate weighted average prices of all transactions of the last day. 'P/E' is the Average price of previous day. 'D Hi' and 'D Lo' indicate the highest and lowest transacted price last one running year, everyday the range moves by one day. 'NAV' = Net Asset Value Per Share. EPS is based on available latest audited accounts of the companies. EPS & Book value per share are diluted at bookclosing date whenever it is applicable. Only the positive earnings companies are considered in calculating the P/E and EPS of the Sectors and Stock Exchanges. For latest EPS and PE corresponding report is mentioned in 'R' column. Report note details are: Q1=1st Quarter, HY=Half Yearly, Q3= upto 3rd Quarter, Ad=Audited. Here all EPS are annualized and shown and used in PE calculation. Average price is used. Companies having negative EPS showed PE as '-ve' means negative. Sectoral Index Graphs: Sectoral Index are taken from CSE and turnover is the combined turnover of the two stock exchanges. Only DSE sectoral EPS and PE are shown in the sectoral graph.