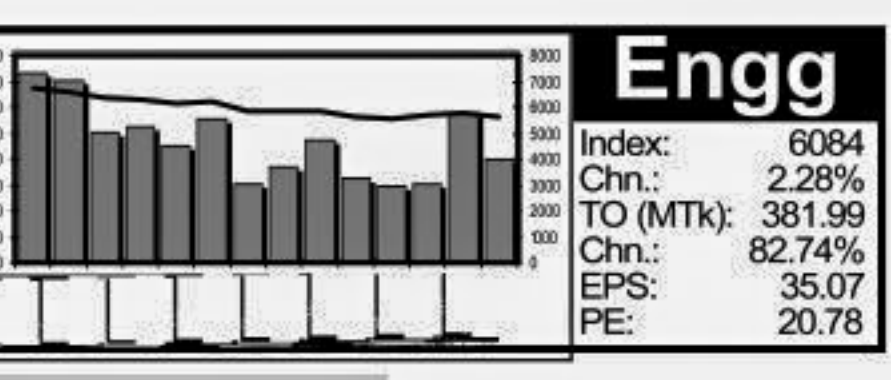
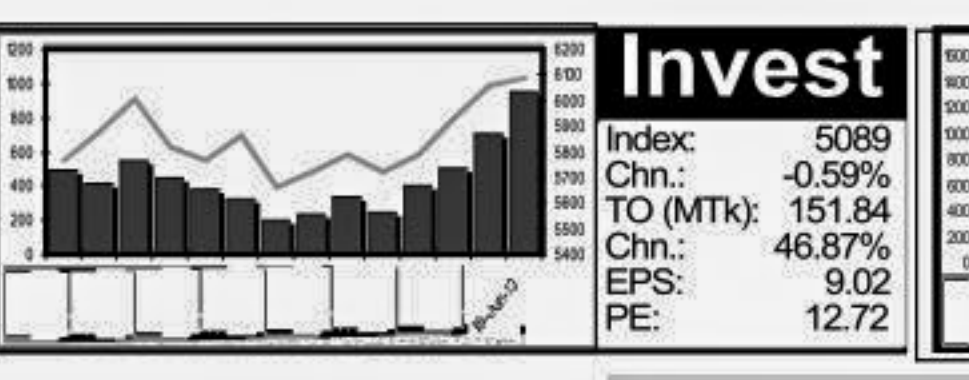
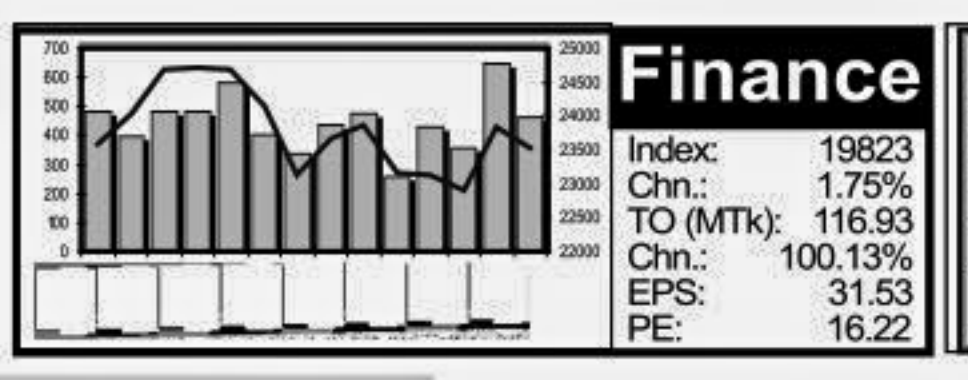
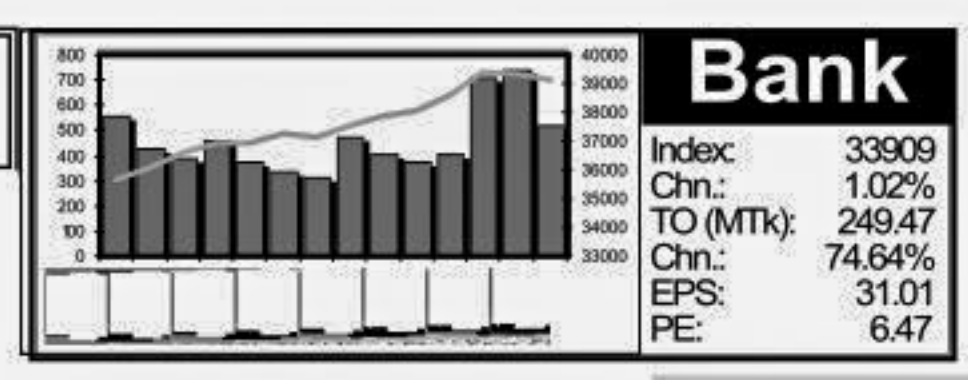
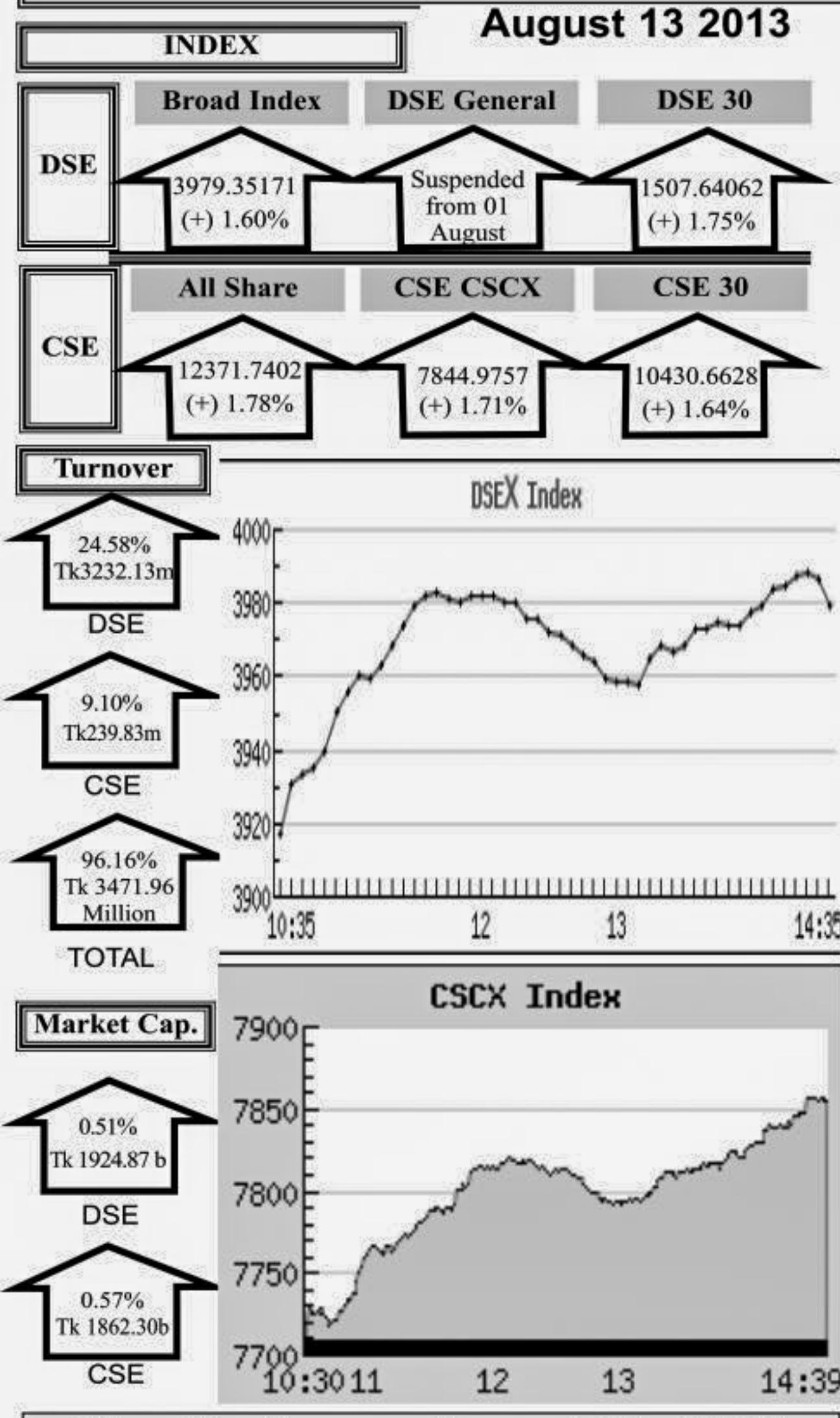


Capital Market Highlights:



Capital Gainers

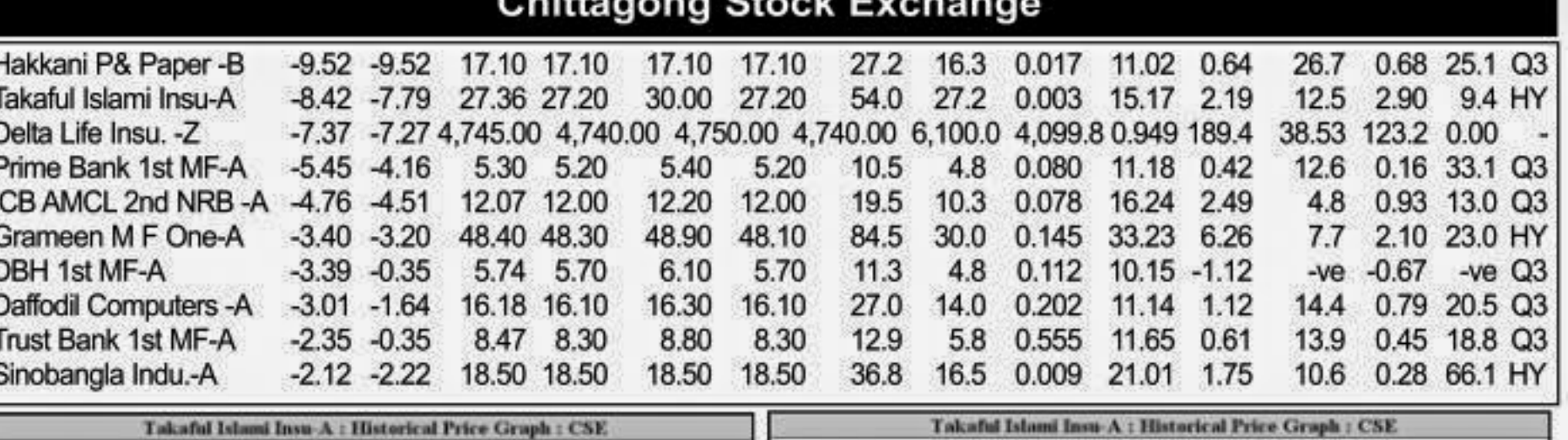
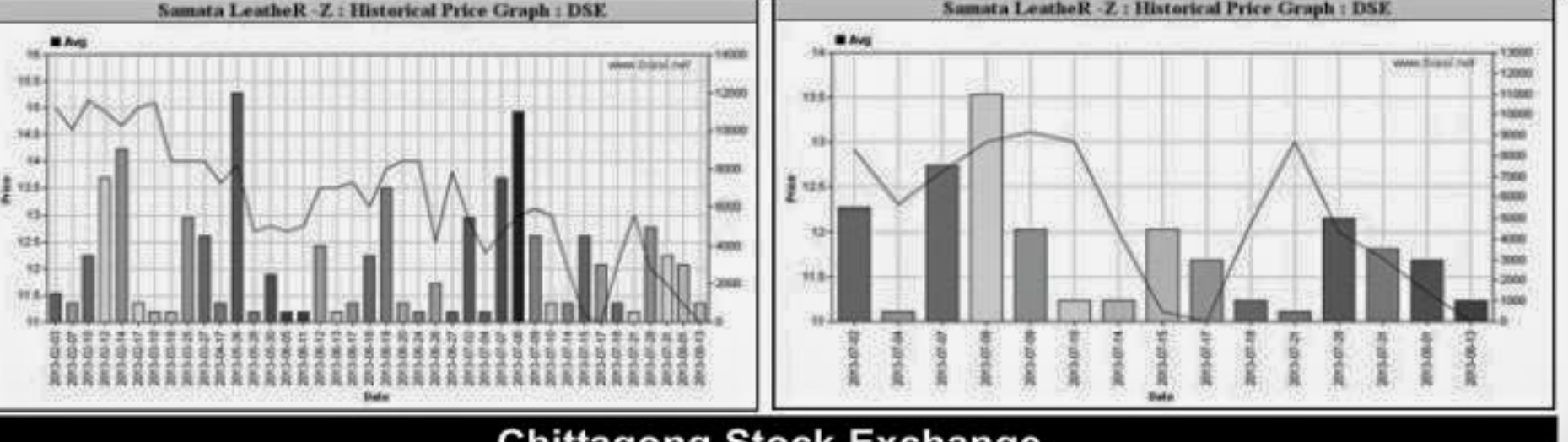
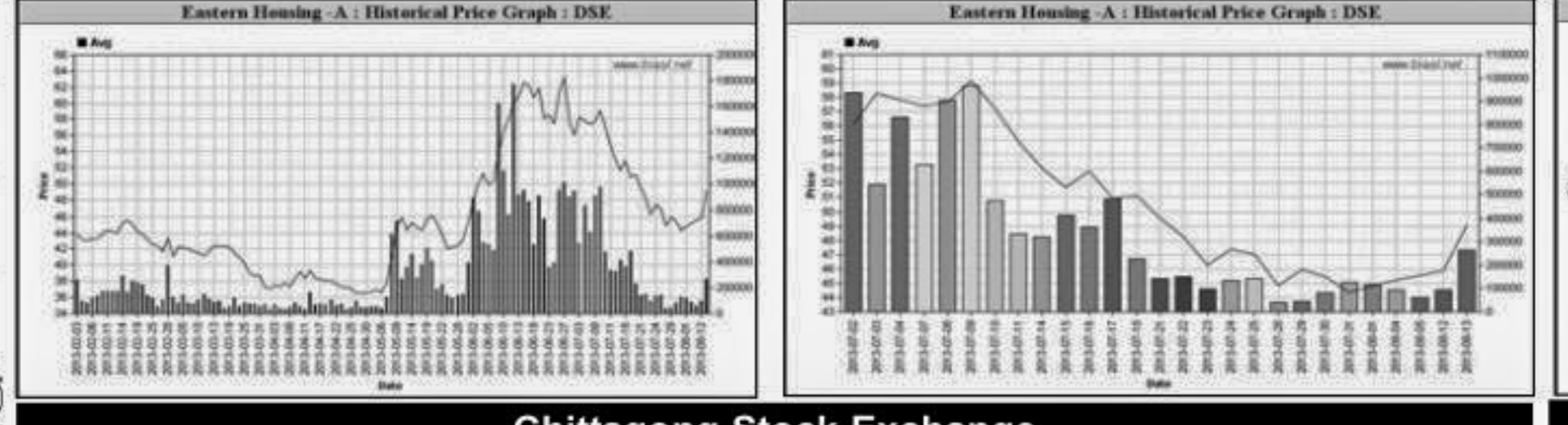
Dhaka Stock Exchange

Company	Price Chn. (%)		Price Scale		T'over	Audited	Latest								
	Clo	Avg.	D Hi	D Lo				NAV	EPS	PE					
Eastern Housing -A	9.96	7.06	49.15	50.80	50.80	44.00	76.4	34.0	12.935	18.48	2.87	17.1	3.33	14.8	Q3
Renwick Jaineswar-A	9.72	10.55	169.70	170.40	170.80	158.50	197.0	62.8	4.862	-9.0	5.62	30.2	3.81	44.5	Q3
Midas Financing-Z	9.62	6.11	31.86	31.90	32.00	28.00	52.5	24.9	0.206	10.05	-1.99	-8.0	-4.97	-8.0	Q3
Familytex (BD) Ltd.-N	8.80	6.33	29.60	30.90	31.20	28.40	52.5	27.5	12.996	14.68	3.72	8.0	8.26	3.6	HY
Navana CNG-A	8.73	5.34	73.56	76.00	76.60	69.00	102.0	54.8	19.853	27.04	4.09	18.0	4.09	18.0	Q3
Bangladesh Lamps-A	8.68	8.08	139.06	140.20	140.90	134.90	175.0	81.0	3.101	37.07	-5.31	-1.0	1.36	102.3	HY
4th ICB M F-A	8.26	8.63	214.55	214.90	216.00	214.80	242.1	122.1	0.236	58.63	23.40	9.2	20.63	10.4	Q3
5th ICB M F-A	7.49	7.39	183.64	183.80	184.00	183.00	235.0	100.1	0.202	41.95	18.93	9.7	16.60	9.0	Q3
EBL First M F-A	7.32	4.46	8.66	8.80	9.00	8.40	14.8	6.3	3.310	12.62	0.99	8.7	15.7	15.2	Q3
Padma Oil Co.-A	6.39	6.30	359.94	364.40	365.30	335.00	492.0	155.0281	255	43.7	16.38	22.0	17.69	20.3	Q3

Capital Losers

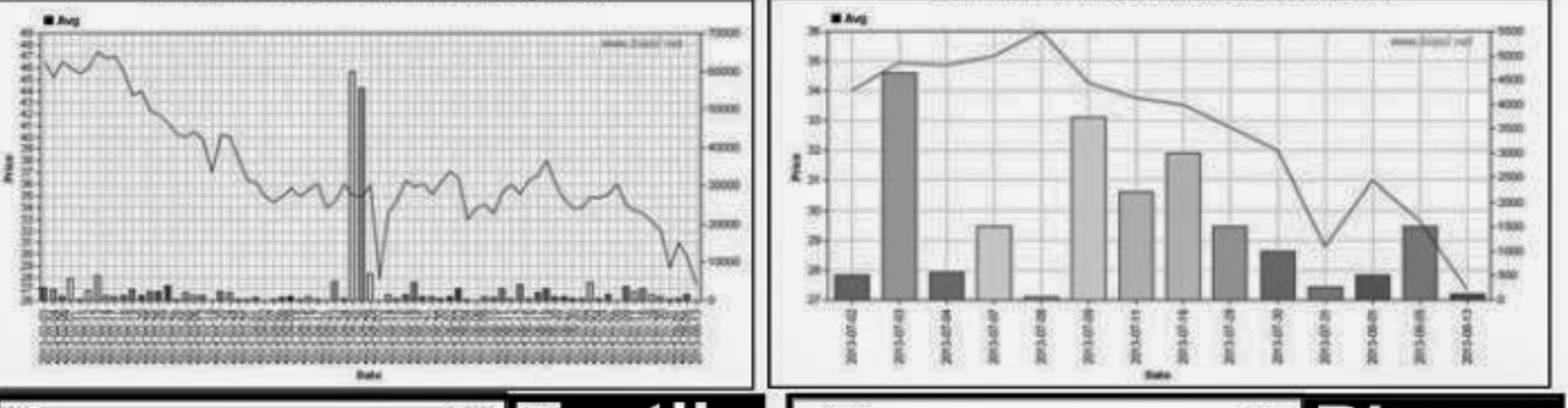
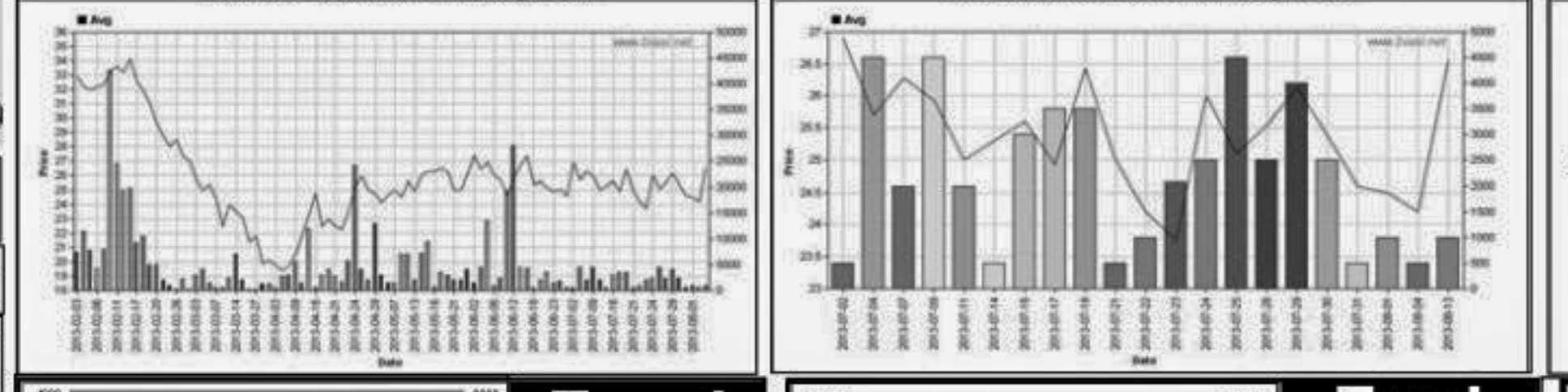
Dhaka Stock Exchange

Company	Price Chn. (%)		Price Scale		T'over	Audited	Latest								
	Clo	Avg.	D Hi	D Lo				NAV	EPS	PE					
Samata Leather-Z	-4.42	-2.91	11.00	10.80	10.90	10.70	17.6	10.7	0.011	12.08	-0.07	-1.0	-0.05	-1.0	Q3
Grameen M F One-A	-3.79	-1.51	48.80	48.20	50.50	47.00	84.0	29.0	7.393	33.23	6.26	7.8	2.10	23.2	HY
Prime Bank 1st MF-A	-3.77	-5.99	5.18	5.10	5.40	5.00	10.6	4.9	3.422	11.18	4.22	12.3	0.16	32.4	Q3
Standard Insurance-A	-2.40	-2.34	36.66	36.60	38.00	36.20	54.2	35.5	0.724	13.99	2.58	14.2	2.98	12.3	HY
Merico BD Ltd-A	-2.30	-1.19	25.74	25.50	26.50	23.60	43.0	21.0	16.612	14.5	15.3	16.8	2.02	12.7	HY
Marantol Insur-A	-2.09	2.99	639.196240	640.00	647.00	623.50	666.5	299.0	15.692	62.47	27.53	23.2	53.00	12.1	Q1
Anilma Yam -A	-1.89	0.63	30.31	30.10	31.20	29.80	35.4	15.0	5.183	11.01	1.19	25.5	1.23	24.6	Q3
ICB AMCL3rd NRB MF-A	-1.85	0.19	5.33	5.20	5.40	5.10	10.8	4.8	1.697	10.6	0	-	-	27.6	Q3
Phoenix Fin. 1st MF-A	-1.85	-0.74	5.33	5.30	5.60	5.20	12.4	4.6	1.711	11.11	0.51	10.5	0.16	33.3	Q3
AMCL 2nd MF-A	-1.82	-0.90	5.49	5.40	5.60	5.40	11.7	5.0	0.321	12.12	0.6	9.2	0.25	22.0	Q3



Key Features - August 13, 2013

Indicators	DSE	CSE	TOTAL
Turnover (Million Taka)	3,232.13	239.83	3,471.96
Turnover (Volume)	61,123,175	5,819,331	66,942,506
No. of Contract	79,333	9,902	89,235
Traded Issues	286	184	286
Issue Gain (Avg. Price Basis)	239	138	239
Issue Loss (Avg. Price Basis)	46	41	46
Unchanged Issue (Avg. Price Basis)	1	5	1
Market Cap. Equity (Billion Tk.)	1,924.87	1,862.30	1,924.87
Market Cap. Equity (Billion US\$)	23.33	22.57	23.33



Combined Turnover Leaders

Company	Volume (Share)	Value (M. Taka)	% of Total	Average Price
Padma Oil Co. -A	822108	295.86	8.52	359.88
Meghna Petroleum -A	848905	237.06	6.83	279.26
BD Submarine Cable-A	758160	234.93	6.77	309.87
Olympic Ind. -A	891357	210.60	6.07	236.26
Square Pharma -A	564882	124.74	3.59	220.82
Jamuna Oil -A	508136	120.75	3.48	237.63
Argon Denims Limited-A	2941920	115.27	3.32	39.18
Premier Cement-N	690200	87.49	2.52	126.76
UNITED AIR-A	4063213	82.36	2.37	20.27
Grameenphone-A	455911	82.32	2.37	180.56
BSC-A	136145	73.81	2.13	542.14
Aftab Auto.-A	590727	67.29	1.94	113.91
Unique Hotel RL -N	704283	65.95	1.90	93.64
Delta Life Insu. -Z	13100	62.09	1.79	4739.69
R. N. Spinning-A	2075599	54.60	1.57	26.31
Titas Gas TDCLA	631631	54.13	1.56	85.69
Tallu Spinning-A	1427280	49.87	1.44	34.94
Active Fine Chem.-A	510310	43.85	1.26	85.93
ConfidenceCement A	315786	40.79	1.17	129.16
Summit Purbanchol Power-N	661940	38.58	1.11	58.28
Eastern Bank -A	1400723	37.74	1.09	26.94
Prime Bank-A	1633657	35.12	1.01	21.5
UCBL -A	1746441	33.10	0.95	18.95
Bangas -A	62350	32.80	0.94	526.12
CVO PetroChem RL-A	63400	30.80	0.89	485.79
Orion Pharma-N	463920	30.18	0.87	65.05
Singer BD -A	144237	27.81	0.80	192.83
Malek Spinning-A	1027440	27.78	0.80	27.04
Generation Next Fashions-A	1214147	26.11	0.75	21.5
Golden Harvest Agro-N	597200	25.97	0.75	43.48

