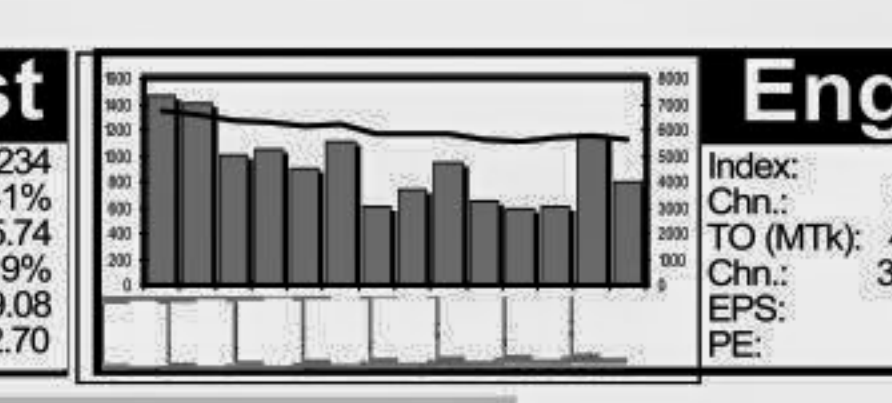
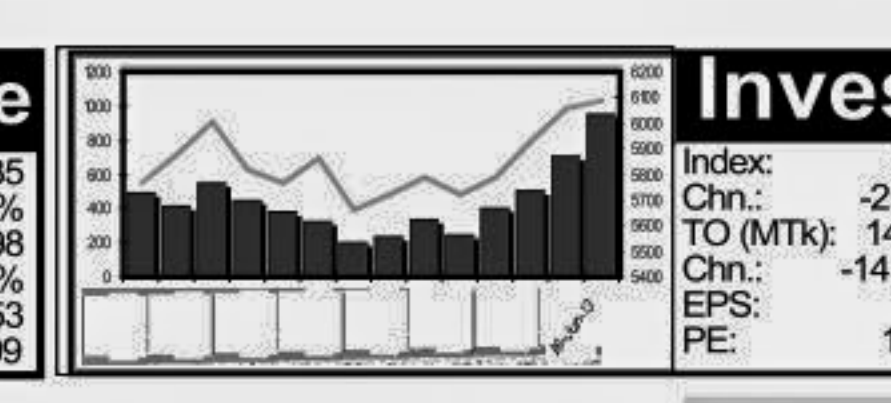
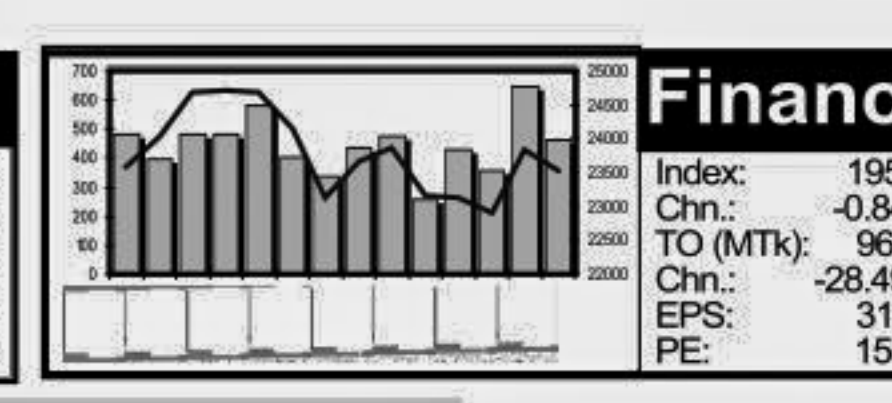
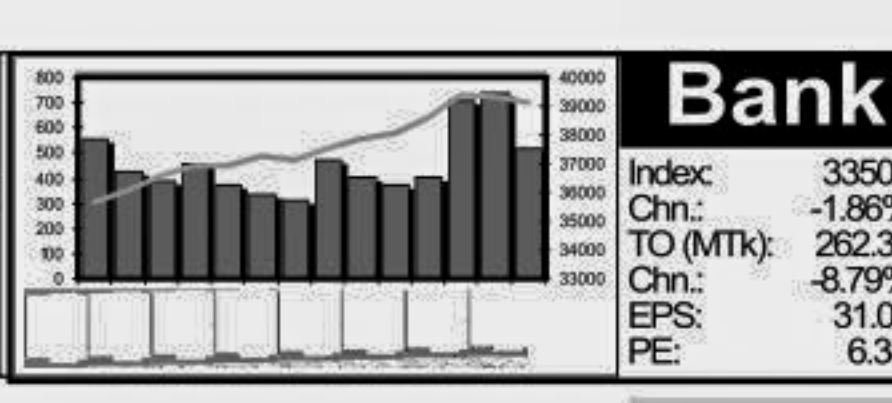
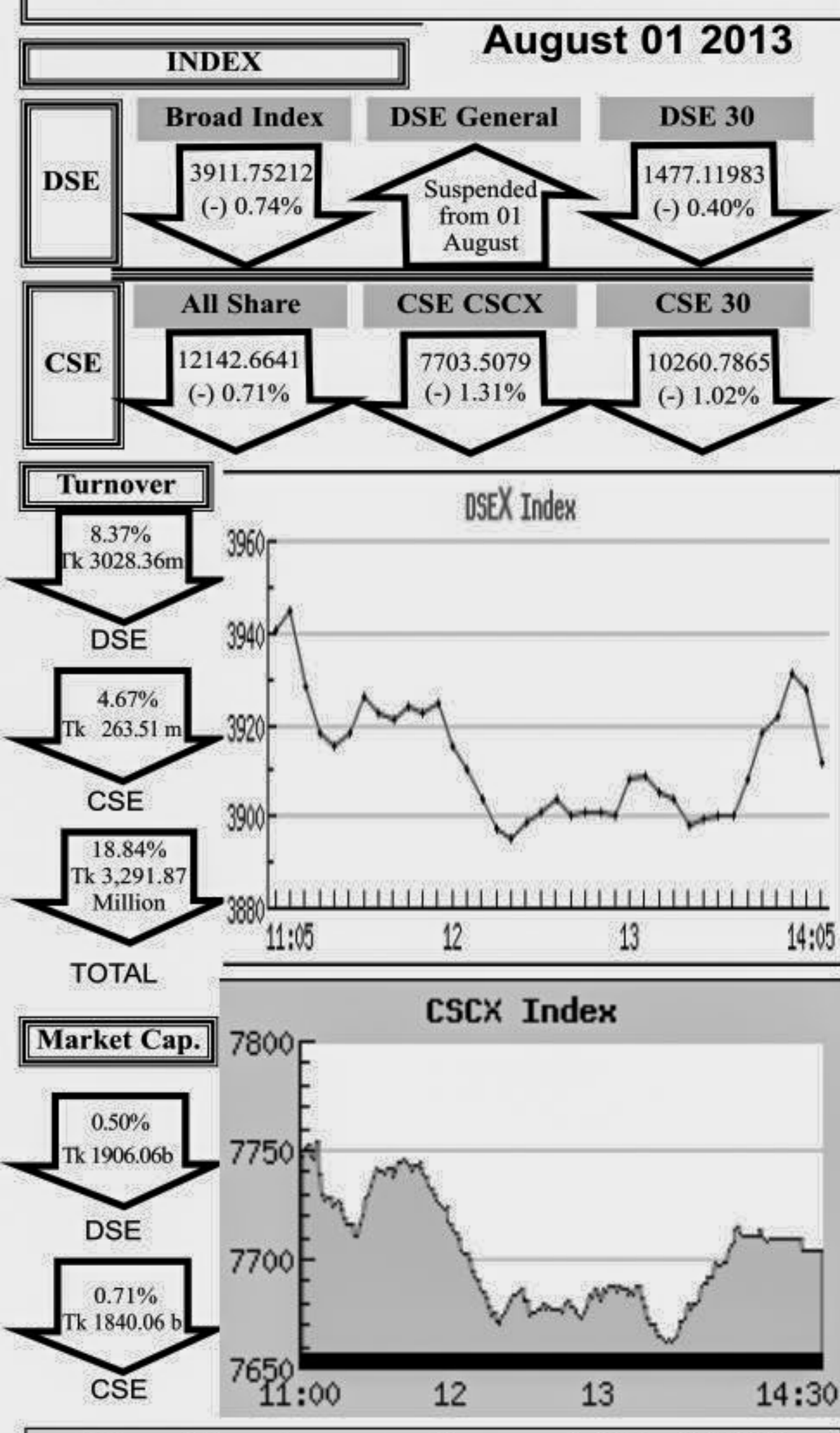


Capital Market Highlights:



Capital Gainers

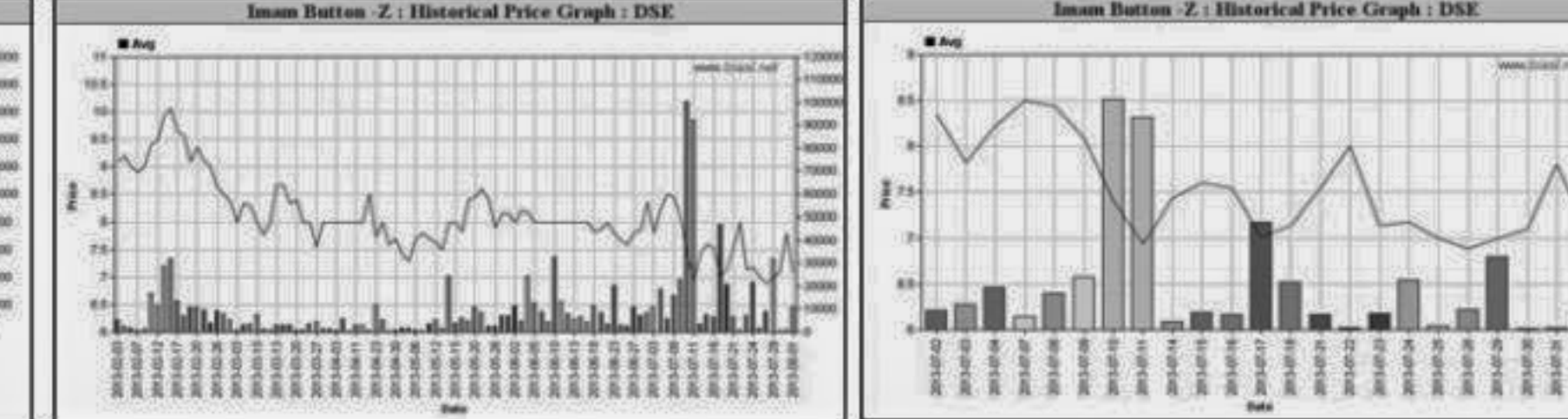
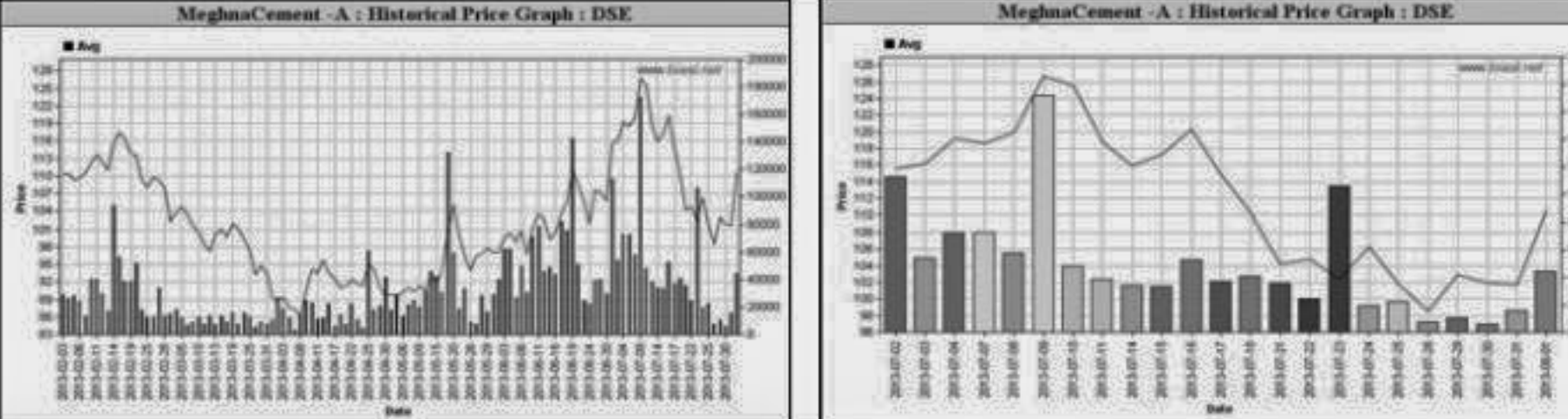
Dhaka Stock Exchange

| Company | Price Chn. (%) | | Price Scale | | | T'over | | Audited | | Latest | | | | | |
|------------------------|----------------|-------|-------------|--------|-----------|------------|-------|---------|--------|--------|----------|-------|------|------|----|
| | Clo | Avg | Avg | Clo | D Hi D Lo | Yr Hi YrLo | M.Tk | NAV | EPS | PE | EPS PE R | | | | |
| MeghnaCement-A | 9.94 | 8.75 | 110.60 | 110.60 | 110.60 | 152.7 | 78.5 | 4.911 | 33.81 | 6.28 | 17.6 | 8.94 | 12.4 | HY | |
| Familytex (BD) Ltd.-N | 9.63 | 12.64 | 35.20 | 35.30 | 35.40 | 52.5 | 27.5 | 163.328 | 14.68 | 3.72 | 9.5 | 8.26 | 4.3 | HY | |
| Progressive Life-A | 8.89 | 8.48 | 97.63 | 98.00 | 99.00 | 137.0 | 84.1 | 0.754 | 31.45 | 2.30 | 42.4 | 2.30 | 42.4 | Ad | |
| Berger Paints-A | 7.50 | 7.66 | 825.53 | 826.00 | 826.00 | 800.0 | 478.0 | 30.008 | 100.2 | 32.46 | 25.4 | 46.56 | 17.7 | HY | |
| Ambee Pharma -A | 6.99 | 9.90 | 261.76 | 261.80 | 266.00 | 245.0 | 318.0 | 16.11 | 4.018 | 2.65 | 3.94 | 6.64 | 3.12 | 83.9 | HY |
| GlaxoSK (BD) -A | 5.44 | 6.57 | 883.48 | 881.50 | 898.00 | 856.0 | 898.0 | 47.0 | 18.288 | 23.32 | 20.25 | 43.6 | 5.72 | 15.4 | HY |
| Argon Denims Limited-A | 5.29 | 3.51 | 35.36 | 35.80 | 36.50 | 30.90 | 86.0 | 28.6 | 51.788 | 38.86 | 1.89 | 18.7 | 5.22 | 14.0 | Q1 |
| Olympic Ind. -A | 4.50 | 1.63 | 537.68 | 543.40 | 554.00 | 520.0 | 734.0 | 109.0 | 18.335 | 50.27 | 7.20 | 74.7 | 7.20 | 74.7 | Ad |
| Rupali Life Insur.-A | 4.02 | 2.74 | 223.60 | 226.70 | 229.70 | 200.0 | 258.0 | 81.0302 | 14.91 | 5.94 | 37.6 | 5.49 | 29.9 | Q3 | |
| National Tubes -A | 4.02 | 2.80 | 89.44 | 90.50 | 92.30 | 143.0 | 80.0 | 2.415 | 31.25 | 3.75 | 23.9 | 5.33 | 16.8 | Q3 | |

Capital Losers

Dhaka Stock Exchange

| Company | Price Chn. (%) | | Price Scale | | | T'over | | Audited | | Latest | | | | | |
|---------------------|----------------|-------|--------------|--------|-----------|------------|-------|---------|--------|--------|----------|-------|-------|------|----|
| | Clo | Avg | Avg | Clo | D Hi D Lo | Yr Hi YrLo | M.Tk | NAV | EPS | PE | EPS PE R | | | | |
| Imam Button-Z | -8.97 | -8.97 | 7.10 | 7.10 | 7.10 | 18.0 | 6.5 | 0.078 | 5.67 | -1.68 | -ve | -2.40 | -ve | Q3 | |
| Renwick Jaineswar-A | -7.89 | -7.66 | 138.33135.50 | 145.00 | 132.50 | 197.0 | 61.8 | 1.494 | -9.0 | 5.62 | 24.6 | 3.81 | 36.3 | Q3 | |
| 5th ICB M F-A | -7.51 | -7.53 | 181.0811.10 | 181.50 | 180.00 | 235.0 | 100.1 | 0.670 | 41.95 | 18.93 | 9.6 | 18.60 | 9.7 | Q3 | |
| B I F C-A | -6.99 | -6.46 | 13.47 | 13.30 | 14.10 | 13.00 | 34.0 | 13.0 | 1.248 | 18.58 | 0.15 | 89.8 | 1.96 | -ve | HY |
| National Bank - B | -6.40 | -8.41 | 11.55 | 11.70 | 12.50 | 11.30 | 30.2 | 11.3 | 39.094 | 15.76 | 1.05 | 11.0 | -2.64 | -ve | HY |
| Apex Spinning-A | -6.31 | -6.36 | 59.44 | 59.40 | 60.90 | 58.00 | 81.5 | 54.0 | 0.107 | 49.32 | 2.01 | 29.6 | 1.72 | 34.6 | Q3 |
| Midias Financing-Z | -6.06 | -6.32 | 31.00 | 31.00 | 31.00 | 31.00 | 31.00 | 52.5 | 24.9 | 0.016 | 10.05 | -1.99 | -ve | Q3 | |
| City Bank -A | -5.56 | -6.38 | 17.17 | 17.00 | 19.80 | 16.20 | 35.1 | 14.2 | 9.378 | 25.97 | 1.15 | 14.9 | 1.16 | 14.8 | HY |
| PrimeFin. 1st MF-A | -5.42 | -7.05 | 15.81 | 15.70 | 16.50 | 15.20 | 35.7 | 9.1 | 6.245 | 11.63 | 0.64 | 24.7 | 0.38 | 41.6 | HY |
| National Tubes -A | -5.41 | -5.43 | 59.73 | 59.50 | 62.40 | 58.50 | 85.5 | 36.0 | 1.547 | 31.21 | -2.52 | -ve | -3.20 | -ve | Q3 |

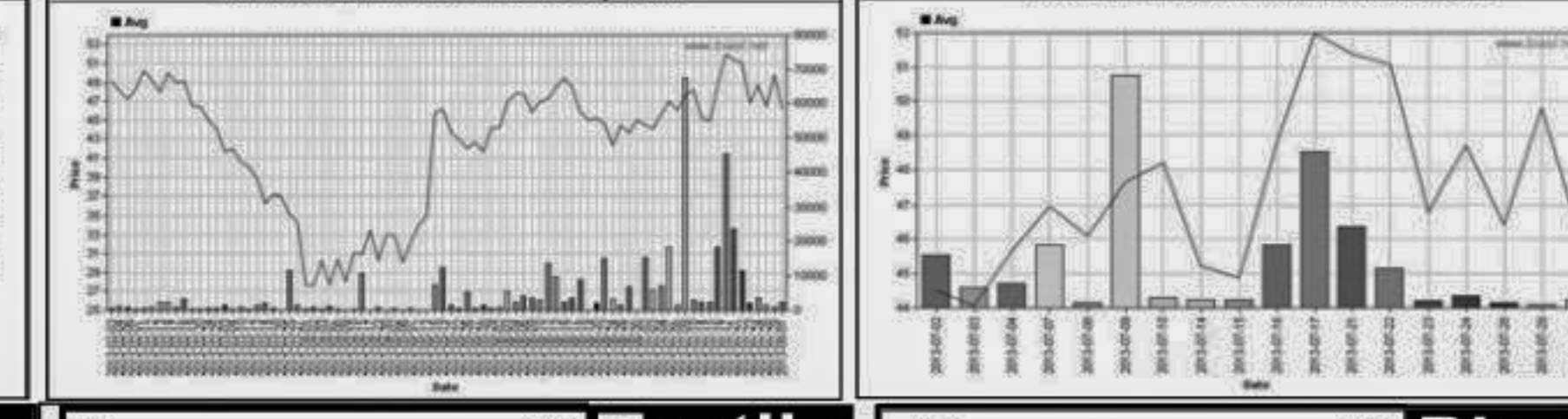
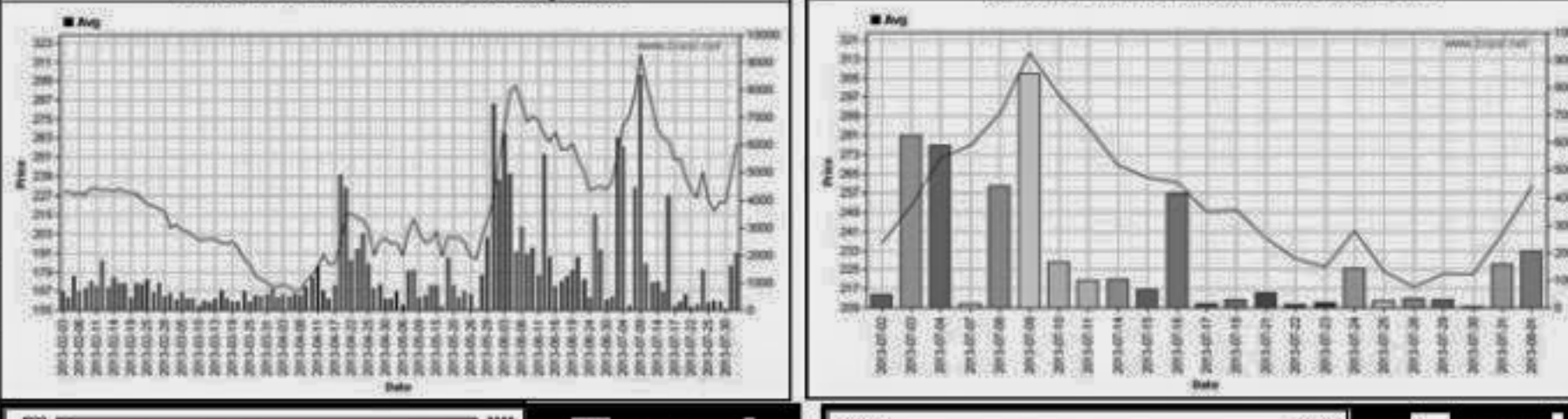


Chittagong Stock Exchange

| Company | Price Chn. (%) | | Price Scale | | | T'over | | Audited | | Latest | | | | | |
|------------------------|----------------|-------|--------------|--------|-----------|------------|-------|---------|--------|--------|----------|-------|------|------|----|
| | Clo | Avg | Avg | Clo | D Hi D Lo | Yr Hi YrLo | M.Tk | NAV | EPS | PE | EPS PE R | | | | |
| ICB AMCL 1st NRB-A | 12.00 | 12.00 | 28.00 | 28.00 | 28.00 | 35.2 | 24.2 | 0.056 | 35.31 | 4.06 | 6.9 | 2.48 | 11.3 | Q3 | |
| MeghnaCement-A | 9.99 | 9.99 | 107.90107.90 | 107.90 | 107.90 | 148.9 | 85.0 | 0.108 | 33.81 | 6.28 | 17.2 | 8.94 | 12.1 | HY | |
| Familytex (BD) Ltd.-N | 9.97 | 12.90 | 35.19 | 35.30 | 35.30 | 34.10 | 52.5 | 27.5 | 16.541 | 14.68 | 3.72 | 9.5 | 8.26 | 4.3 | HY |
| Ambee Pharma -A | 7.25 | 8.03 | 259.62260.40 | 263.80 | 250.00 | 319.3 | 161.0 | 0.539 | 26.15 | 3.94 | 65.9 | 3.12 | 83.2 | HY | |
| Central Insur -A | 6.67 | 6.67 | 30.40 | 30.40 | 30.40 | 47.0 | 23.5 | 0.517 | 19.04 | 1.54 | 19.7 | 2.36 | 12.9 | HY | |
| National Tea -A | 4.56 | 4.56 | 888.75888.80 | 910.00 | 835.00 | 910.0 | 710.0 | 0.178 | 110.05 | 29.88 | 29.7 | 19.28 | 46.1 | HY | |
| Olympic Ind. -A | 4.40 | 2.21 | 222.55227.70 | 230.00 | 217.00 | 255.9 | 84.0 | 8.746 | 14.91 | 5.94 | 37.5 | 7.42 | 29.7 | Q3 | |
| Square Pharma -A | 4.28 | 3.74 | 116.86219.30 | 219.90 | 209.50 | 263.5 | 150.0 | 13.699 | 50.83 | 9.01 | 24.1 | 9.01 | 24.1 | Ad | |
| Argon Denims Limited-A | 4.13 | 2.34 | 34.62 | 35.30 | 36.20 | 33.80 | 85.9 | 28.8 | 1.941 | 38.86 | 1.89 | 18.3 | 2.52 | 13.7 | Q1 |
| Bangas -A | 3.76 | 2.29 | 548.45554.90 | 558.00 | 524.00 | 714.7 | 59.0 | 0.603 | 50.27 | 7.20 | 76.2 | 7.20 | 76.2 | Ad | |

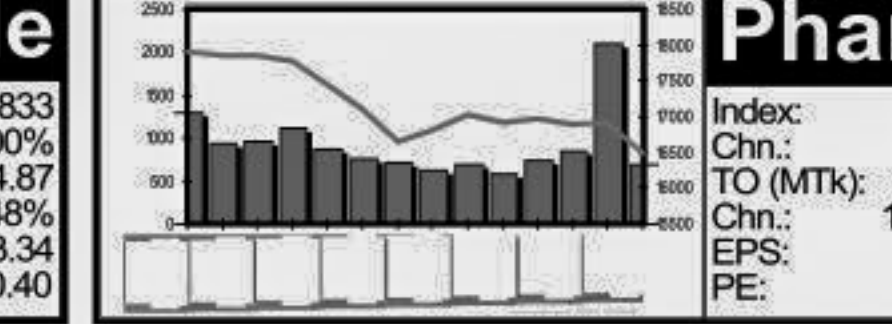
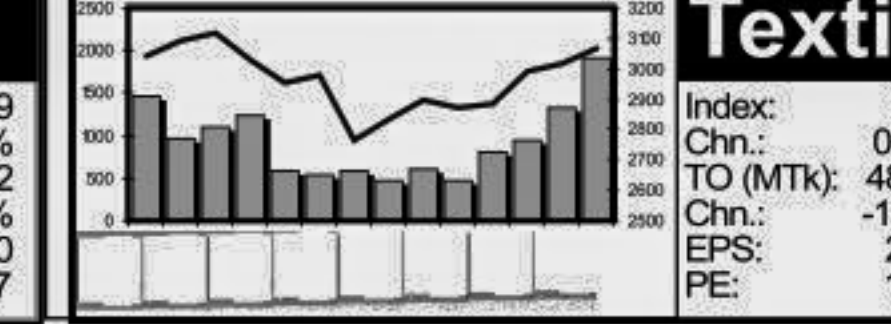
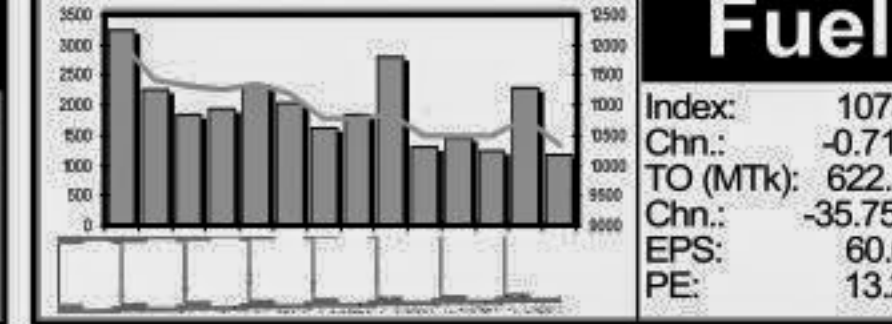
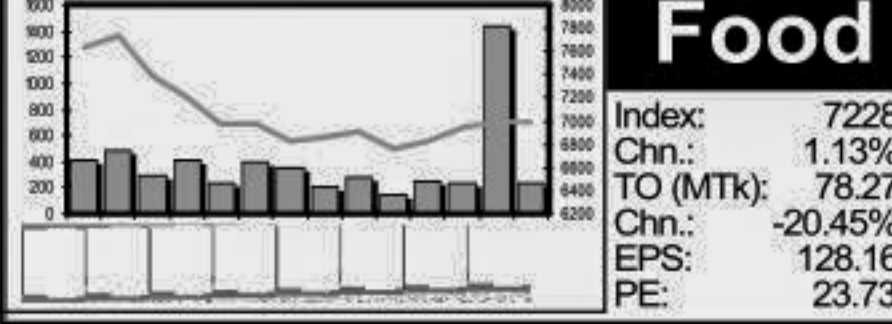
Chittagong Stock Exchange

| Company | Price Chn. (%) | | Price Scale | | | T'over | | Audited | | Latest | | | | | |
|----------------------|----------------|-------|-------------|--------|-----------|------------|-------|---------|--------|--------|----------|-------|-------|-------|-------|
| | Clo | Avg | Avg | Clo | D Hi D Lo | Yr Hi YrLo | M.Tk | NAV | EPS | PE | EPS PE R | | | | |
| Northern G Insur-A | -7.43 | -7.39 | 46.12 | 46.10 | 49.00 | 45.40 | 63.6 | 27.5 | 0.115 | 11.15 | 1.77 | 26.1 | 4.50 | 10.2 | HY |
| ACI ZERO Bond-A | -7.43 | -7.43 | 760.00 | 760.00 | 760.00 | 880.0 | 760.0 | 0.002 | 1000 | 0 | 0 | 0 | 0 | 0 | 0 |
| Eastland Insur -A | -7.37 | -2.22 | 44.00 | 44.00 | 44.00 | 44.00 | 44.00 | 44.00 | 44.00 | 44.00 | 44.00 | 44.00 | 44.00 | 44.00 | 44.00 |
| Graemeen F One-A | -7.29 | -6.30 | 48.75 | 48.30 | 50.00 | 48.30 | 84.5 | 30.0 | 0.195 | 33.23 | 6.26 | 7.8 | 2.10 | 23.2 | HY |
| National Bank - B | -5.60 | -6.85 | 11.70 | 11.80 | 12.30 | 11.30 | 30.0 | 11.3 | 9.460 | 15.76 | 1.05 | 11.1 | -2.64 | -ve | HY |
| Rupali Life Insur.-A | -5.56 | -5.56 | 85.00 | 85.00 | 85.00 | 85.00 | 144.0 | 85.0 | 0.043 | 31.25 | 3.75 | 22.7 | 5.33 | 15.9 | Q3 |
| City Bank -A | -5.49 | -6.22 | 17.19 | 17.20 | 18.20 | 16.90 | 35.0 | 15.0 | 1.298 | 25.97 | 1.15 | 14.9 | 1.16 | 14.8 | HY |
| Peoples Insur-A | -5.38 | -2.50 | 27.28 | 26.40 | 27.40 | 26.40 | 33.0 | 23.0 | 0.035 | 20.72 | 2.05 | 13.3 | 2.28 | 12.0 | HY |
| PrimeFin. 1st MF-A | -5.36 | -6.67 | 15.94 | 15.90 | 16.10 | 15.70 | 35.7 | 9.0 | 0.064 | 11.63 | 0.64 | 24.9 | 0.38 | 41.9 | HY |
| BEXIMCO Ltd. -A | -5.23 | -6.23 | 32.81 | 32.60 | 37.80 | 31.00 | 81.2 | 31.0 | 16.913 | 86.74 | 3.24 | 10.1 | 1.10 | 29.8 | HY |



Key Features - August 01, 2013

| Indicators | DSE | CSE | TOTAL |
|------------------------------------|------------|-----------|------------|
| Turnover (Million Taka) | 3,028.36 | 263.51 | 3,291.87 |
| Turnover (Volume) | 62,537,500 | 7,412,968 | 69,950,468 |
| No. of Contract | 76,344 | 11,224 | 87,568 |
| Traded Issues | 287 | 189 | 287 |
| Issue Gain (Avg. Price Basis) | 60 | 46 | 60 |
| Issue Loss (Avg. Price Basis) | 222 | 141 | 222 |
| Unchanged Issue (Avg. Price Basis) | 5 | 2 | 5 |
| Market Cap. Equity (Billion Tk.) | 1,906.06 | 1,840.06 | 1,906.06 |
| Market Cap. Equity (Billion US\$) | 23.10 | 22.30 | 23.10 |



Combined Turnover Leaders

| Company | Volume (Share) | Value (M. Taka) | %of Total | Average Price |
|---------------------------|----------------|-----------------|-----------|---------------|
| Olympic Ind. -A | 1391989 | 311.21 | 9.45 | 223.57 |
| BD Submarine Cable-A | 685310 | 202.40 | 6.15 | 295.34 |
| Meghna Petroleum -A | 724940 | 199.88 | 6.07 | 275.71 |
| Familytex (BD) Ltd.-N | 5110000 | 179.87 | 5.46 | 35.20 |
| Square Pharma -A | 807430 | 175.01 | 5.32 | 216.75 |
| Padma Oil Co. -A | 437325 | 154.57 | 4.70 | 353.44 |
| Graemeenphone-A | 605811 | 111.86 | 3.40 | 184.65 |
| Jamuna Oil -A | 387985 | 91.42 | 2.78 | 235.63 |
| BEXIMCO Ltd. -A | 2580412 | 83.94 | 2.55 | 32.53 |
| R. N. Spinning-A | 3068137 | 82.83 | 2.52 | 27 |
| Titas Gas TDCLA | 692455 | 58.05 | 1.76 | 83.84 |
| BSC-A | 107705 | 56.52 | 1.72 | 524.77 |
| UNITED AIR-A | 2767849 | 54.68 | 1.66 | 19.75 |
| Argon Denims Limited-A | 1520640 | 53.73 | 1.63 | 35.33 |
| National Bank - B | 4193370 | 48.55 | 1.48 | 11.58 |
| Summit Purbanchol Power-N | 828530 | 48.43 | 1.47 | 58.45 |
| Orion Pharma-N | 687180 | 43.61 | 1.32 | 63.47 |
| Unique Hotel RL - N | 436740 | 37.75 | 1.15 | 86.43 |
| UCBL - A | 1787624 | 32.87 | 1.00 | 18.39 |
| Active Fine Chem.-A | 365359 | 30.62 | 0.93 | 83.8 |
| Berger Paints-A | 36350 | 30.01 | 0.91 | 825.53 |
| Aftab Auto.-A | 241961 | 26.11 | 0.79 | 107.9 |
| Tallu Spinning -A | 755230 | 25.59 | 0.78 | 33.88 |
| Singer BD -A | 131137 | 25.36 | 0.77 | 193.37 |
| ConfidenceCement A | 188893 | 23.77 | 0.72 | 125.84 |
| Marico BD Ltd-A | 35200 | 23.05 | 0.70 | 654.96 |
| AIMS First -A | 465900 | 22.56 | 0.69 | 48.42 |
| Envoy Textiles Ltd-N | 448780 | 21.25 | 0.65 | 47.35 |
| BSRM Steels-A | 299471 | 20.96 | 0.64 | 70 |
| Bangas -A | 35200 | 18.94 | 0.58 | |