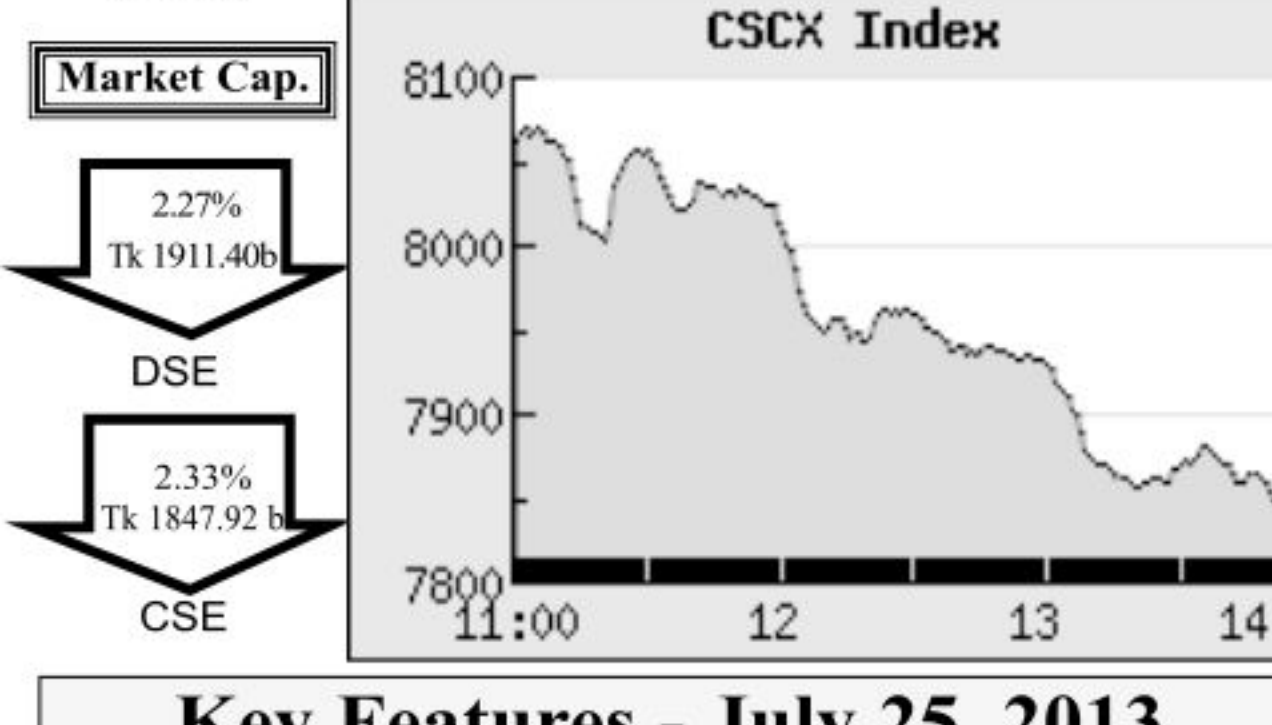
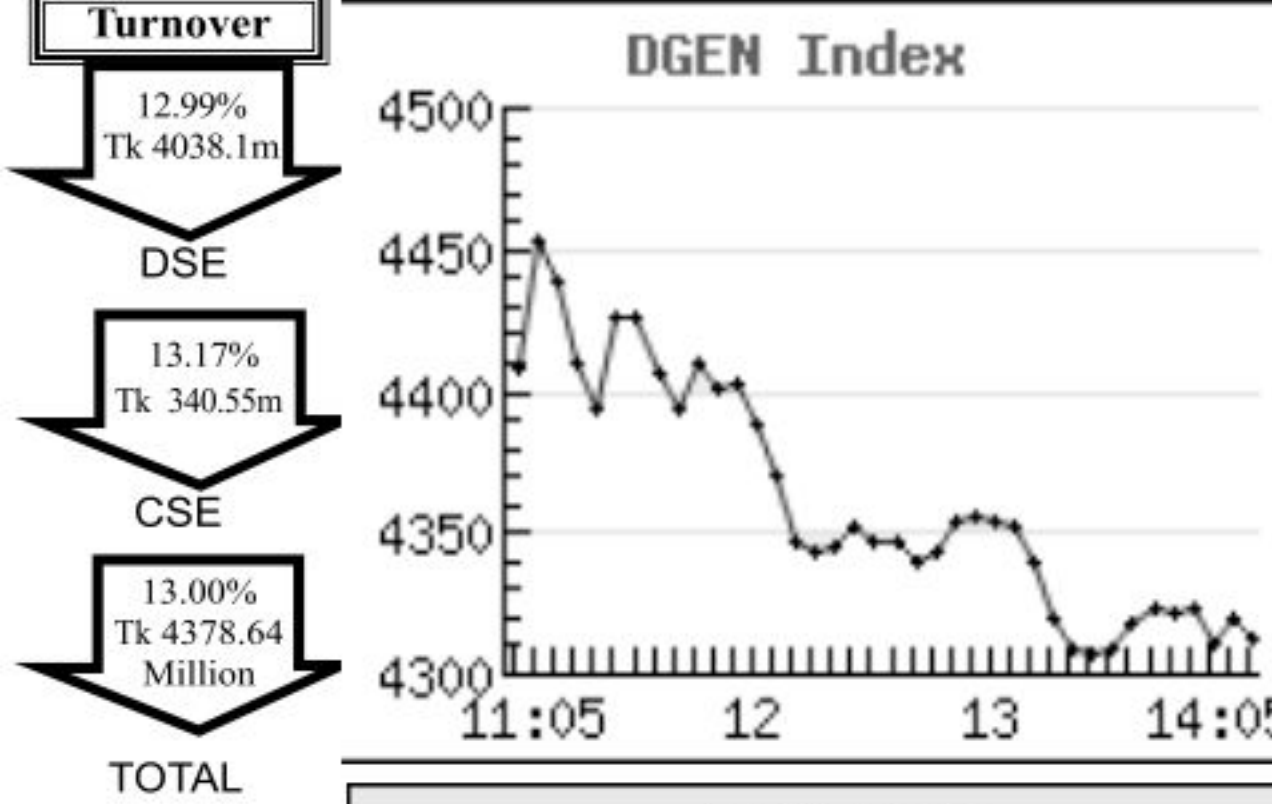


Capital Market Highlights: July 25 2013

INDEX		
DSE	DSE General	DSE 30
3979.19659 (-) 2.39%	4312.20569 (-) 2.19%	1478.26899 (-) 2.18%

CSE		
All Share	CSE CSCX	CSE 30
12373.6053 (-) 2.09%	7852.9707 (-) 2.11%	10591.4402 (-) 1.87%



Key Features - July 25, 2013

Indicators	DSE	CSE	TOTAL
Turnover (Million Taka)	4,038.08	340.55	4,378.64
Turnover (Volume)	90,954,929	9,171,222	100,126,151
No. of Contract	94,555	13,140	107,695
Traded Issues	285	204	285
Issue Gain (Avg. Price Basis)	82	65	82
Issue Loss (Avg. Price Basis)	200	137	200
Unchanged Issue (Avg. Price Basis)	3	2	3
Market Cap. Equity (Billion Tk.)	1,911.40	1,847.92	1,911.40
Market Cap. Equity (Billion US\$)	23.17	22.40	23.17

Combined Turnover Leaders

Company	Volume (Share)	Value (M. Taka)	% of Total	Average Price
Meghna Petroleum -A	1197940	308.98	7.06	257.93
BD Submarine Cable-A	991040	292.32	6.68	294.96
Titas Gas TDCLA	2556426	226.27	5.17	88.51
Padma Oil Co. -A	545985	193.56	4.42	354.51
Active Fine Chem.-A	1934297	175.30	4.00	90.63
Olympic Ind. -A	795890	168.70	3.85	211.97
Jamuna Oil -A	653826	152.84	3.49	233.76
Unique Hotel RL - N	1338260	132.54	3.03	99.04
Grameenphone-A	728607	131.45	3.00	180.41
UNITED AIR-A	5928762	119.13	2.72	20.09
Square Pharma -A	526854	109.37	2.50	207.59
BSC-A	179325	99.91	2.28	557.14
Orion Pharma-N	1432140	95.83	2.19	66.92
AIMS First -A	1226000	67.84	1.55	55.33
Aftab Auto -A	535913	61.27	1.40	114.32
BSRM Steels-A	781419	59.70	1.36	76.4
Summit Purbanchol Power-N	893670	54.60	1.25	61.1
Grameen I:Scheme2 -A	2280950	49.65	1.13	21.77
UCBL - A	2515227	48.08	1.10	19.12
ConfidenceCement A	337391	42.93	0.98	127.23
R. N. Spinning-A	1641448	41.94	0.96	25.55
LafargeS Cement-Z	1279000	41.05	0.94	32.09
DESCO Ltd. -A	440262	35.94	0.82	81.63
Tallu Spinning-A	1061680	35.67	0.81	33.6
Malek Spinning-A	1204025	34.17	0.78	28.38
Bangas -A	55961	32.83	0.75	586.6
Grameen M F One-A	537000	32.82	0.75	61.12
BEXIMCO Ltd. -A	818901	31.23	0.71	38.14
Envoy Textiles Ltd-N	599470	30.72	0.70	51.24
S.B. 1st M. F.-A	2344500	28.72	0.66	12.25

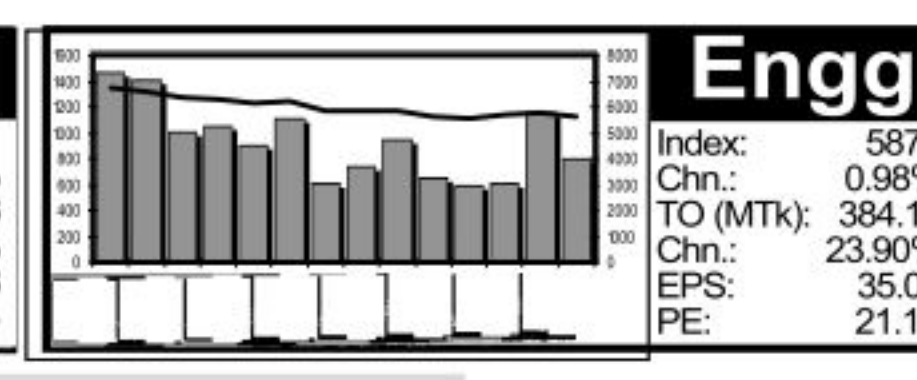
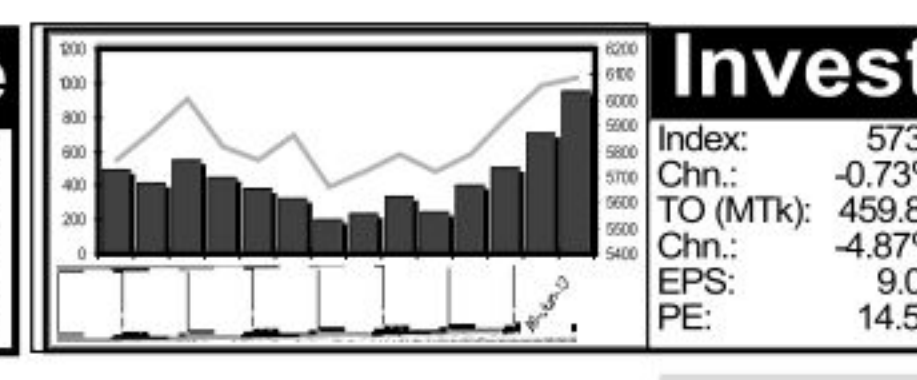
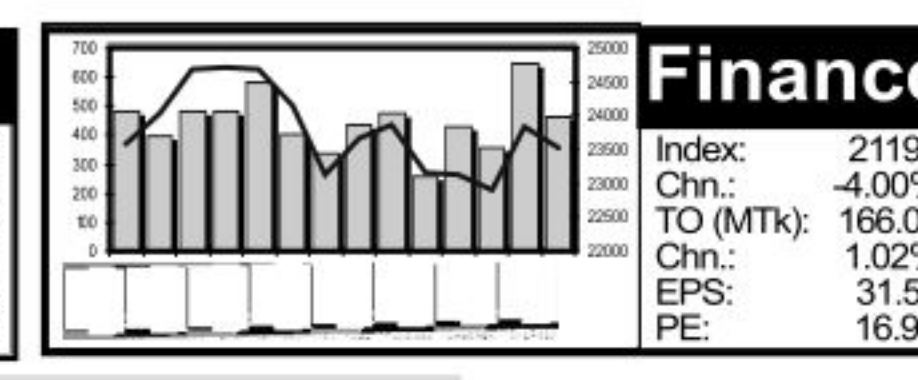
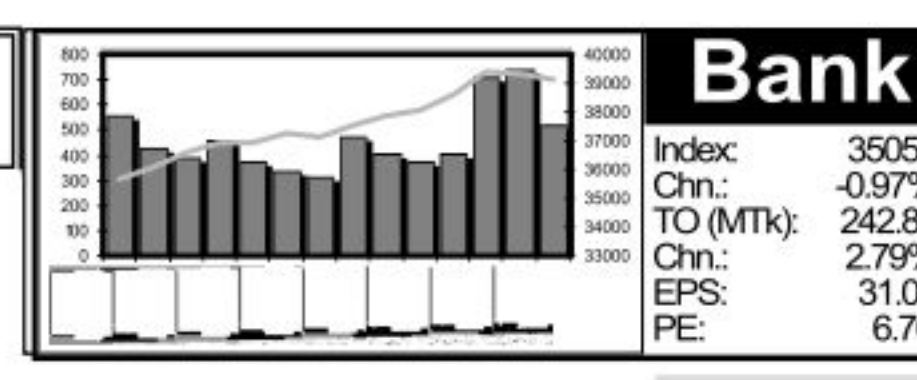
Sectoral Turnover Summary

Sector	DSE		CSE		Total	
	Mill. (Tk)	%	Mill. Tk.	%	Mill. Tk.	%
Bank	215.64	5.34	27.19	7.99	242.83	5.55
NBFI	154.42	3.82	11.62	3.41	166.04	3.79
Investment	427.74	10.59	32.09	9.42	459.83	10.50
Engineering	353.50	8.75	30.61	8.99	384.10	8.77
Food & Allied	106.93	2.65	3.94	1.10	110.87	2.53
Fuel & Power	977.64	24.21	75.25	22.10	1052.89	24.05
Jute	1.04	0.03	0.00	0.00	1.04	0.02
Textile	291.47	7.22	22.11	6.49	313.58	7.16
Pharma & Chemical	463.75	11.48	35.59	10.45	499.34	11.40
Paper & Packaging	0.00	0.00	0.00	0.00	0.00	0.00
Service	9.33	0.23	0.63	0.18	9.96	0.23
Leather	19.42	0.48	1.23	0.36	20.65	0.47
Ceramic	11.27	0.28	0.53	0.16	11.80	0.27
Cement	125.15	3.10	14.21	4.17	139.36	3.18
Information Technology	28.71	0.71	6.57	1.93	35.28	0.81
General Insurance	64.38	1.59	1.16	0.34	65.54	1.50
Life Insurance	44.00	1.09	1.19	0.35	45.19	1.03
Telecom	394.28	9.76	29.49	8.66	423.77	9.68
Travel & Leisure	224.24	5.55	27.43	8.05	251.67	5.75
Miscellaneous	124.97	3.09	19.73	5.79	144.70	3.30
Debtenture	0.20	0.00	0.00	0.00	0.20	0.00

Sectoral P/E & EPS

Sector	P/E		EPS(%)	
	DSE	CSE	DSE	CSE
Bank	6.70	6.69	31.01	31.01
NBFI	16.90	16.61	31.53	32.09
Investment	14.55	14.51	9.08	9.08
Engineering	21.10	21.37	35.07	33.33
Food & Allied	20.85	20.93	127.96	129.44
Fuel & Power	13.57	13.54	60.60	60.60
Textile	10.37	9.86	23.34	23.32
Pharma & Chemical	19.52	18.77	59.08	52.55
Paper & Printing	16.04	18.23	9.55	10.18
Service	16.57	16.22	20.17	20.17
Leather	12.48	12.51	122.17	150.90
Ceramic	23.60	23.49	15.70	15.70
Cement	16.15	16.15	43.40	43.40
IT	17.45	17.43	13.50	13.50
General Insurance	18.41	18.79	22.05	22.81
Life Insurance	23.21	23.63	48.90	48.90
Telecom	15.30	15.27	124.51	124.51
Travel & Leisure	17.86	19.73	25.87	24.89
Miscellaneous	15.03	15.06	28.38	27.63
Stock Exchanges	12.47	12.29	37.49	37.28

Prepared exclusively for Daily Star by Business Information Automation Service Line (BIASL) on the basis of information collected from daily stock quotations and audited reports of the listed companies. High level of caution has been taken to collect and present the above information and data. The publisher will not take any responsibility if any body uses this information and data for his/her investment decision. For any query please email to biasl@bol-online.com or send SMS to 01552153562 or go to www.biasl.net



Capital Gainers

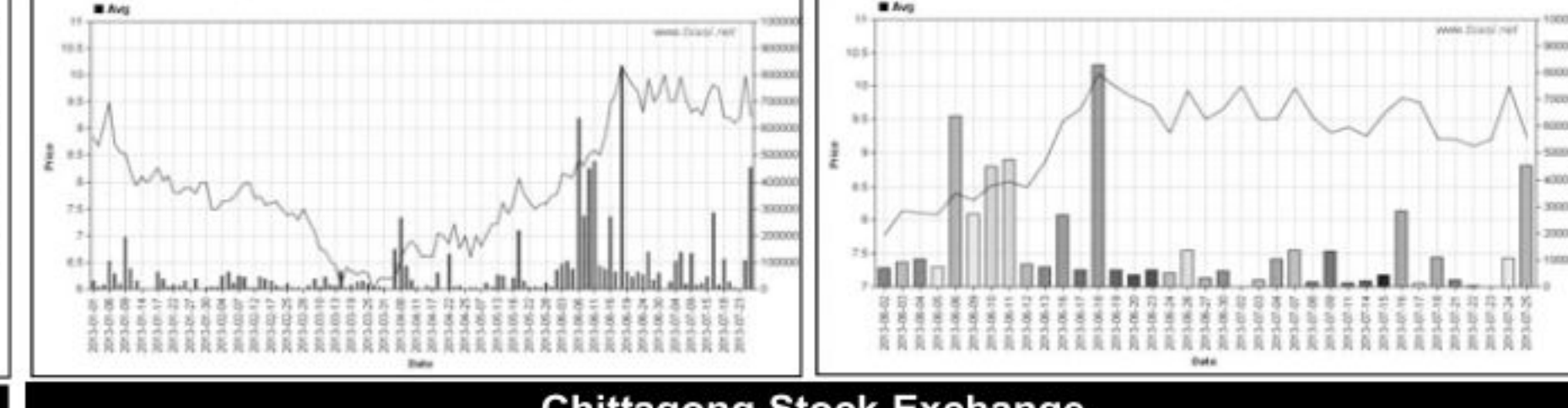
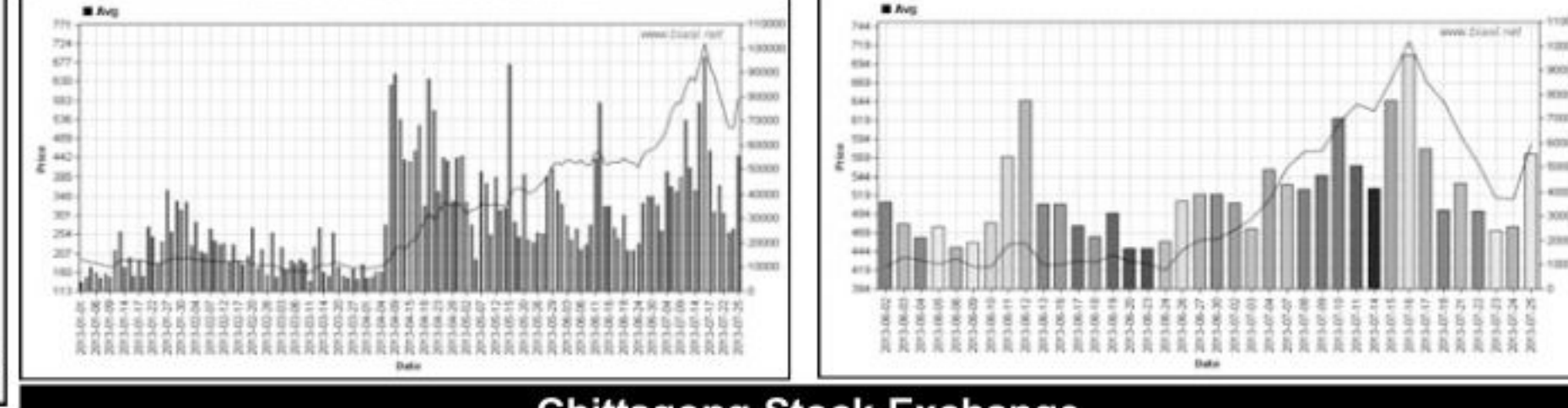
Dhaka Stock Exchange

Company	Price Chn. (%)		Price Scale		T'over	Audited	Latest								
	Clo	Avg.	D Hi	D Lo											
PrimeFin. 1st MF-A	9.94	11.75	19.88	19.90	19.90	35.7	9.1	26.166	11.63	0.64	31.1	0.24	82.8	Q1	
Bangas -A	7.49	14.10	586.80	586.90	586.90	520.00	734.0	109.0	32.457	11.43	3.06	191.8	7.37	79.6	Q3
BATBCL -A	5.37	7.91	1,214.41	1,241.10	1,248.00	1,190.00	1316.7625	0.8683	117.22	65.69		18.5	68.78	17.7	HY
Olympic Ind. -A	4.85	10.04	212.06	209.70	217.00	195.00	258.0	81.0159	8.72	14.91	5.94	35.7	7.49	28.3	Q3
Marico BD Ltd-A	4.75	8.40	549.67	568.30	564.90	516.00	564.9	299.0	17.562	62.47	27.53	20.0	53.00	10.4	Q1
Aziz Pipes-Z	4.52	4.19	16.67	16.20	17.00	15.60	24.0	14.3	0.010	-42.04	0.39	42.7	1.80	9.3	Q1
4th ICB M F-A	4.02	4.95	216.51	215.00	219.00	209.10	219.0	122.1	1.364	58.63	23.40	9.3	20.63	10.5	Q3
Grameen1:Scheme2-A	3.47	11.30	21.77	20.90	22.20	19.00	29.8	10.0	44.165	16.41	2.17	10.0	1.04	20.9	HY
BSRM Steels-A	3.06	8.13	76.45	74.20	79.00	68.00	108.0	41.6	49.740	19.53	3.06	25.0	5.54	13.8	HY
Samorita Hospital-A	2.78	2.75	73.98	74.00	74.00	74.00	93.0	47.0	0.074	17.25	2.31	32.0	2.92	25.3	Q3

Capital Losers

Dhaka Stock Exchange

Company	Price Chn. (%)		Price Scale		T'over	Audited	Latest								
	Clo	Avg.	D Hi	D Lo											
EBL NRB M.F.-A	-10.00	-7.71	9.22	9.00	10.30	9.00	11.0	6.0	4.166	10.88	0.22	41.9	0.52	17.7	Q3
IDLC Finance -A	-9.99	-7.20	67.43	66.70	74.10	66.70	119.0	52.0	24.461	29.18	4.43	15.2	2.50	27.0	HY
JMI Syringes MDL-A	-9.63	-9.41	81.20	80.70	85.00	80.40	146.8	35.5	9.135	12.83	1.12	72.5	0.32	253.8	Q1
Midas Financing-Z	-9.09	-9.33	34.00	34.00	34.00	34.00	54.9	24.9	0.153	10.05	-1.99	-ve	-4.97	-ve	Q3
GreenDetaInsu-A	-9.01	-6.66	107.08105.00	119.70	110.10	140.0	140.0	48.0	4.808	64.44	4.05	26.4	8.20	13.1	Q1
S.B. 1st M. F.-A	-8.66	-1.53	12.24	11.60	13.30	11.50	13.3	7.6	26.158	11.86	1.48	8.3	0.83	14.7	Q3
ACI Formulations-A	-8.64	-6.94	74.19	73.00	77.90	73.00	95.9	56.0	6.236	38.08	3.33	22.3	2.32	32.0	HY
AMCL 2nd MF-A	-8.22	1.24	7.33	6.70	7.90	6.70	11.7	5.0	1.261	12.12	0.16	12.2	0.25	29.7	Q3
Reliance1 M.F.-A	-7.75	-1.67	12.37	11.90	13.40	11.70	13.9	7.7	26.316	11.86	0.35	35.3	0.80	15.5	HY
Prime Finance-A	-6.82	-1.50	29.48	28.70	31.10	28.00	55.0	19.0	10.754	17.88	0.87	33.9	0.32	92.1	Q1



Chittagong Stock Exchange

Company	Price Chn. (%)		Price Scale		T'over	Audited	Latest								
	Clo	Avg.	D Hi	D Lo											
PrimeFin. 1st MF-A	10.00	10.00	19.80	19.80	19.80	35.7	9.0	0.396	11.63	0.64	30.9	0.24	82.5	Q1	
NCBL Mutual Fund-1A	10.00	10.00	11.00	11.00	11.00	11.00	12.9	9.1	0.006	10.48	0.00	-	1.42	7.7	HY
Olympic Ind. -A	7.79	7.74	210.29210.00	212.70	205.00	255.9	84.0	8.832	14.91	5.94	35.4	7.49	28.1	Q3	
Bangas -A	7.50	7.50	569.20569.20	569.20	569.20	714.7	59.0	0.370	11.43	3.06	186.0	7.37	77.2	Q3	
EXIM Bank 1 MF-A	6.52	6.52	9.80	9.80	9.80	9.80	11.1	8.8	0.010	10.91	0.00	-	-	-	-
BATBCL -A	5.99	5.99	1218.921218.90	1219.00	1215.00	1292.0	610.0	0.305	11.72	65.69	18.6	68.78	17.7	HY	
Dutch Ban. Bnk-A	5.26	5.26	100.00100.00	100.00	100.00	100.00	124.5	90.0	0.200	54.27	11.57	8.6	6.00	16.7	Q1
BSRM Steels-A	4.97	8.46	76.14	73.90	77.40	73.50	107.3	43.8	9.958	19.53	3.06	24.9	5.54	13.7	HY
1st BSRS M F-A	4.27	4.27	100.10100.10	100.10	100.10	112.0	64.2	0.100	161.88	14.43	6.9	8.57	17.1	Q3	
Grameen1:Scheme2-A	3.45	9.39	21.79	21.00	22.30	20.80	29.8	11.3	5.490	16.41	2.17	10.0	1.04	21.0	HY

Chittagong Stock Exchange

Company	Price Chn. (%)		Price Scale		T'over	Audited	Latest	
	Clo	Avg.	D Hi	D Lo				
JMI Syringes MDL-A	-10.00	-9.34	80.39	80.10	83.00	80.10	145.9	