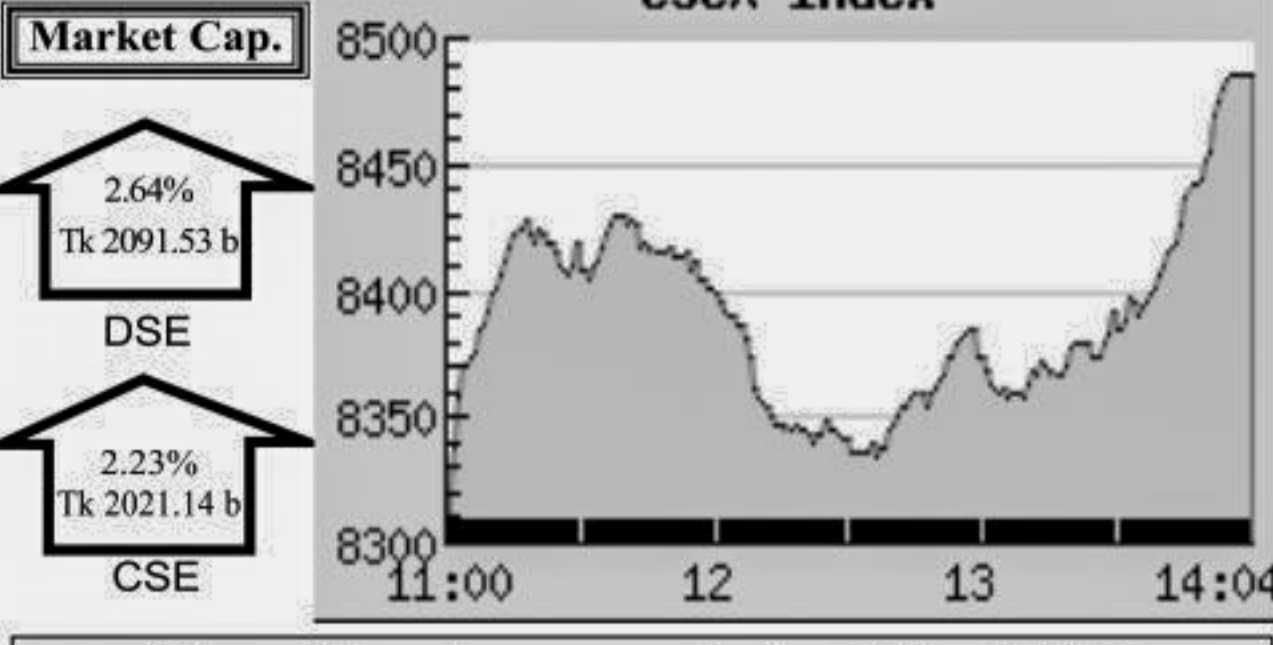
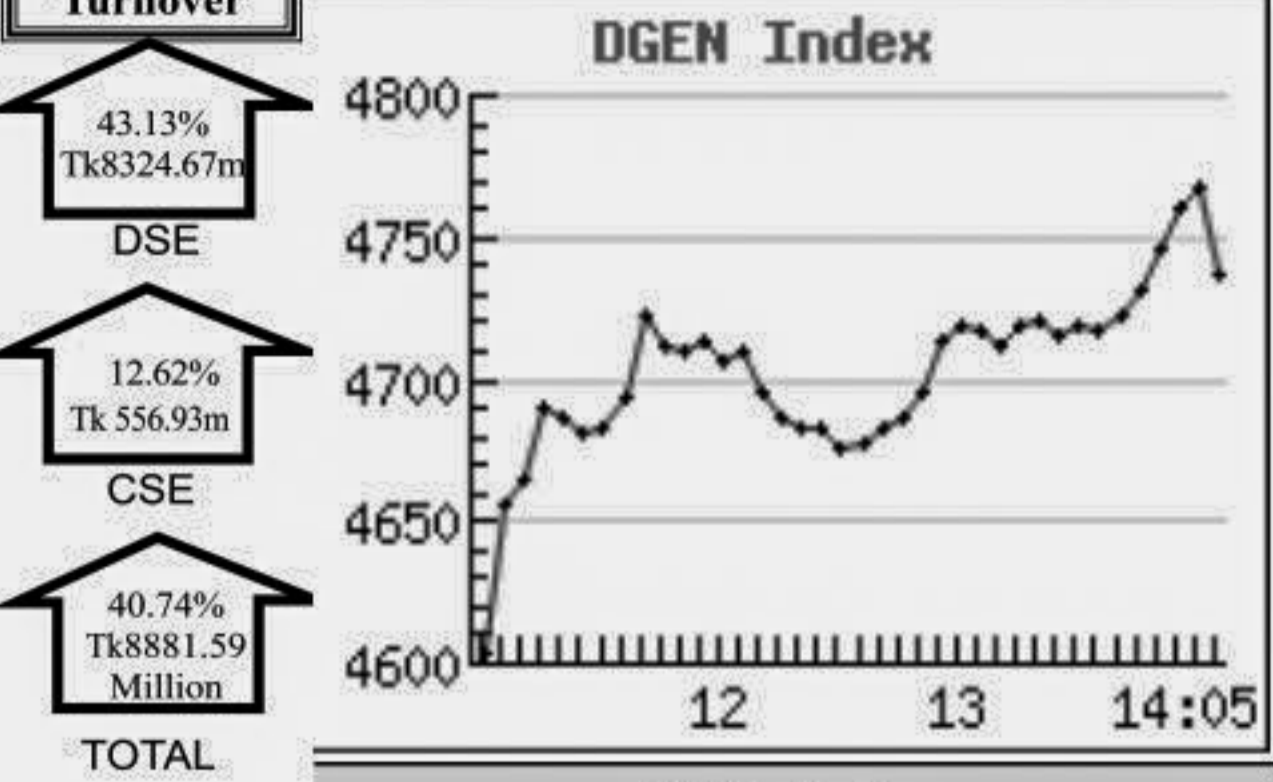


Capital Market Highlights:

INDEX July 15 2013. Broad Index: 4275.49736 (+1.64%), DSE General: 4736.03830 (+2.88%), DSE 30: 1650.74167 (+2.79%). All Share: 13287.5226 (+1.39%), CSE CSCX: 8429.3405 (+1.46%), CSE 30: 11364.6422 (+1.53%).

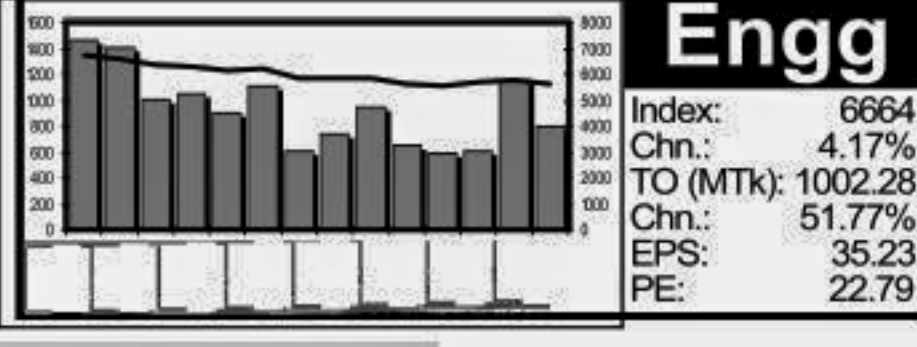
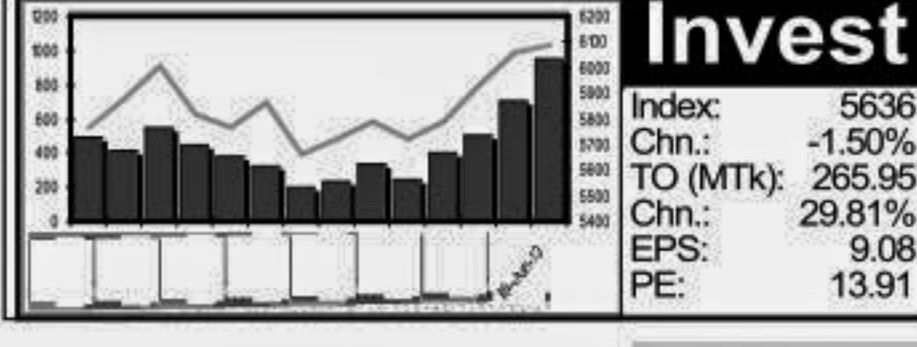
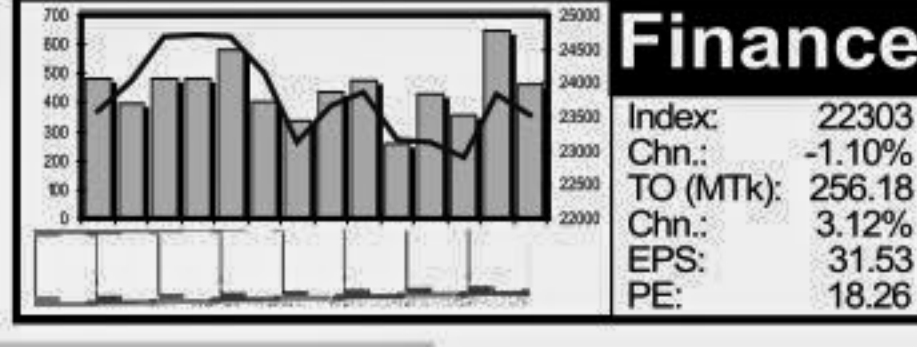
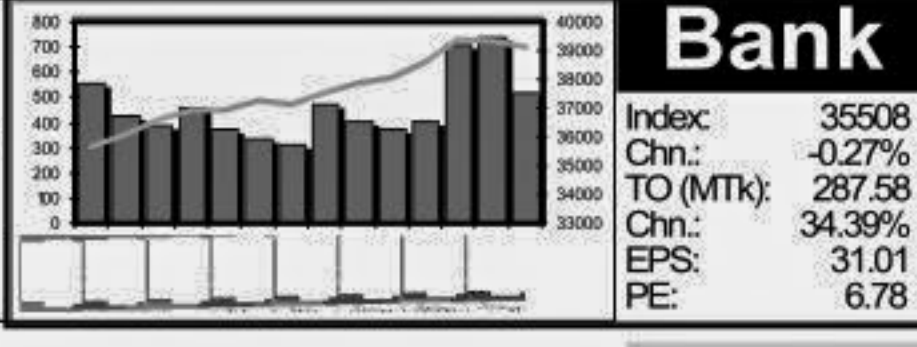


Key Features - July 15, 2013. Indicators: Turnover (Million Taka) 8,324.67, Turnover (Volume) 118,903,715, No. of Contract 181,272, Traded Issues 283, Issue Gain (Avg. Price Basis) 110, Issue Loss (Avg. Price Basis) 170, Unchanged Issue (Avg. Price Basis) 3, Market Cap. Equity (Billion Tk.) 2,091.53, Market Cap. Equity (Billion US\$) 25.35.

Combined Turnover Leaders. Table with columns: Company, Volume (Share), Value (M. Taka), % of Total, Average Price. Top entries include Grameenphone-A, Meghna Petroleum-A, Padma Oil Co.-A, Jamuna Oil-A, BD Submarine Cable-A, etc.

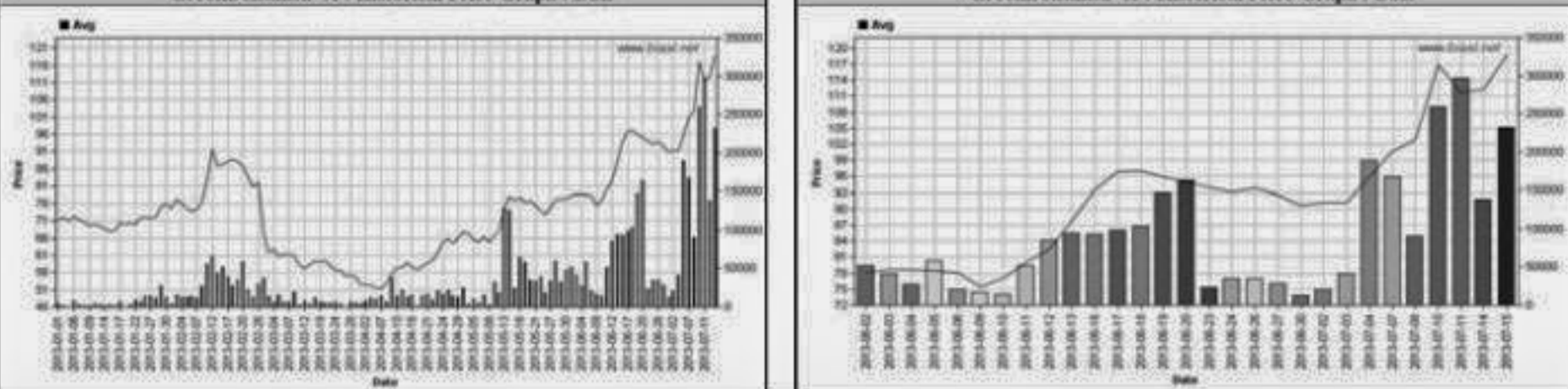
Sectoral Turnover Summary. Table with columns: Sector, DSE (Mill. Tk), CSE (Mill. Tk), Total (Mill. Tk), %. Sectors include Bank, NBFI, Investment, Engineering, Food & Allied, Fuel & Power, etc.

Sectoral P/E & EPS. Table with columns: Sector, P/E, EPS(%), DSE, CSE, DSE, CSE. Sectors include Bank, NBFI, Investment, Engineering, etc.



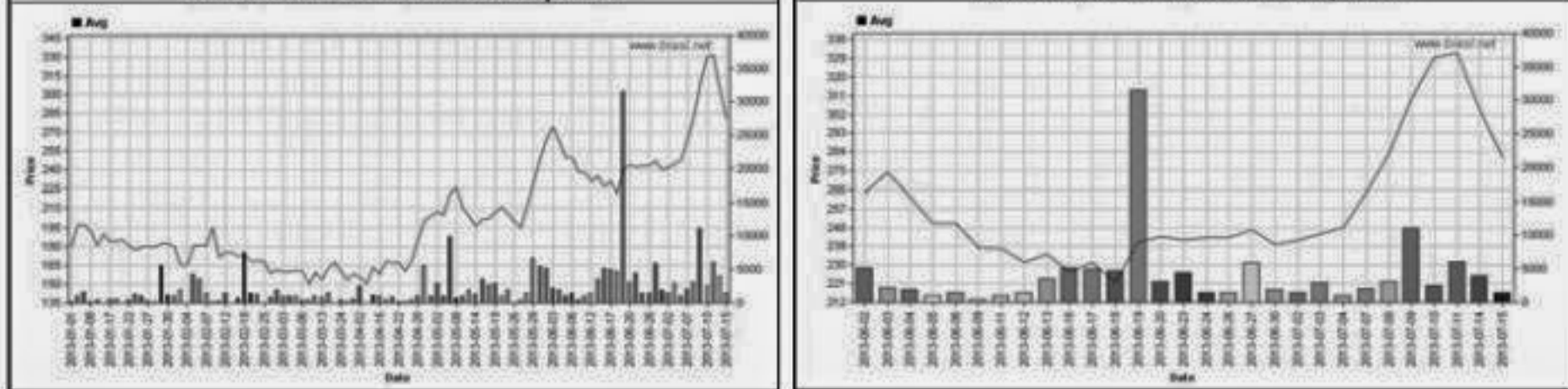
Capital Gainers

Dhaka Stock Exchange Capital Gainers. Table with columns: Company, Price Chn. (%), Price Scale, Yr Hi YrLo, Tover, Audited, Latest. Top gainers include GreenDeltainsu-A, AMCL (Pran)-A, Pioneer Insur-A, etc.



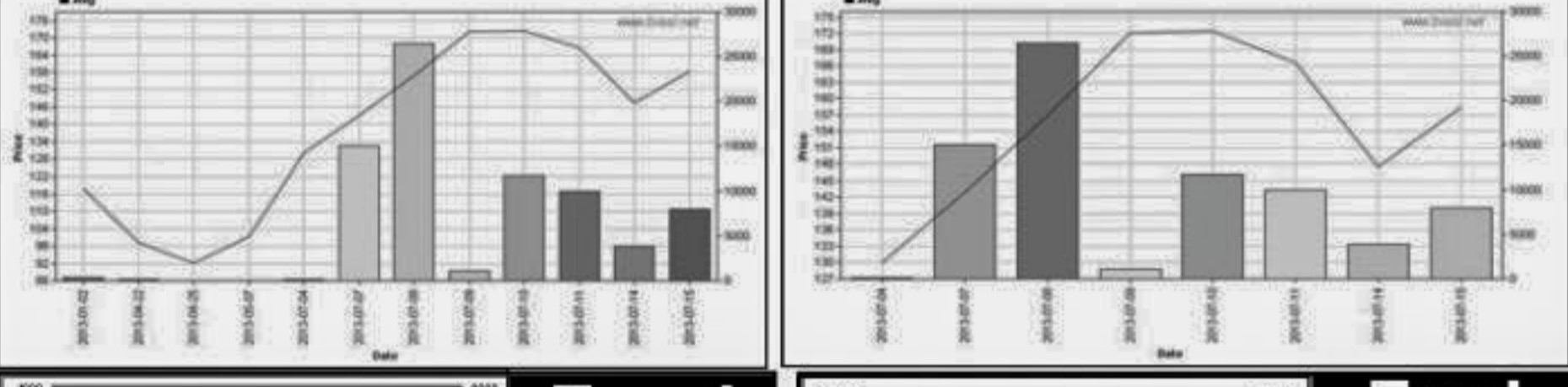
Capital Losers

Dhaka Stock Exchange Capital Losers. Table with columns: Company, Price Chn. (%), Price Scale, Yr Hi YrLo, Tover, Audited, Latest. Top losers include JMI Syringes MDL-A, Kohinor Chem-A, Savor Refractories-Z, etc.



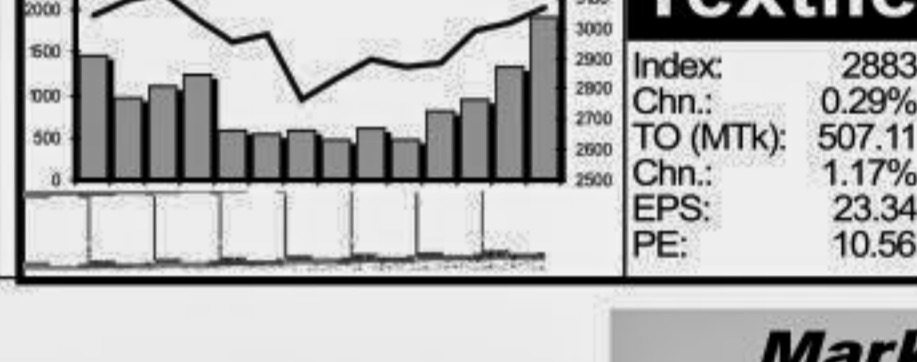
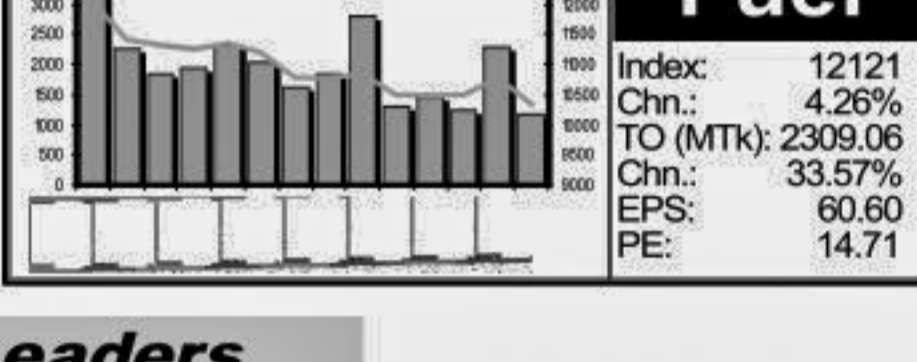
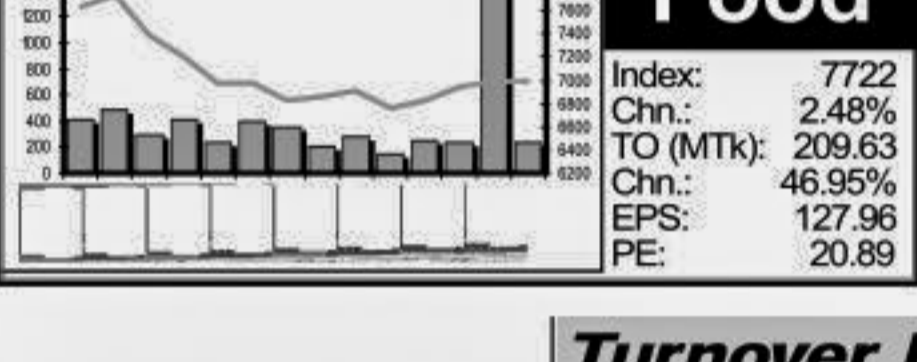
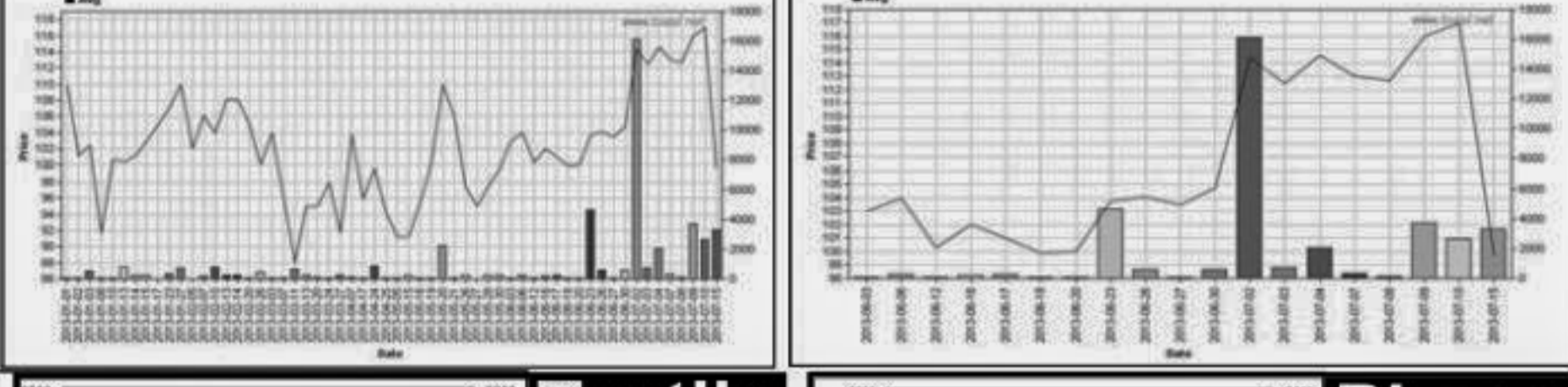
Chittagong Stock Exchange

Chittagong Stock Exchange. Table with columns: Company, Price Chn. (%), Price Scale, Yr Hi YrLo, Tover, Audited, Latest. Top entries include GreenDeltainsu-A, Bangladesh Lamps-A, Premier Cement-N, Padma Oil Co.-A, Jamuna Oil-A, etc.



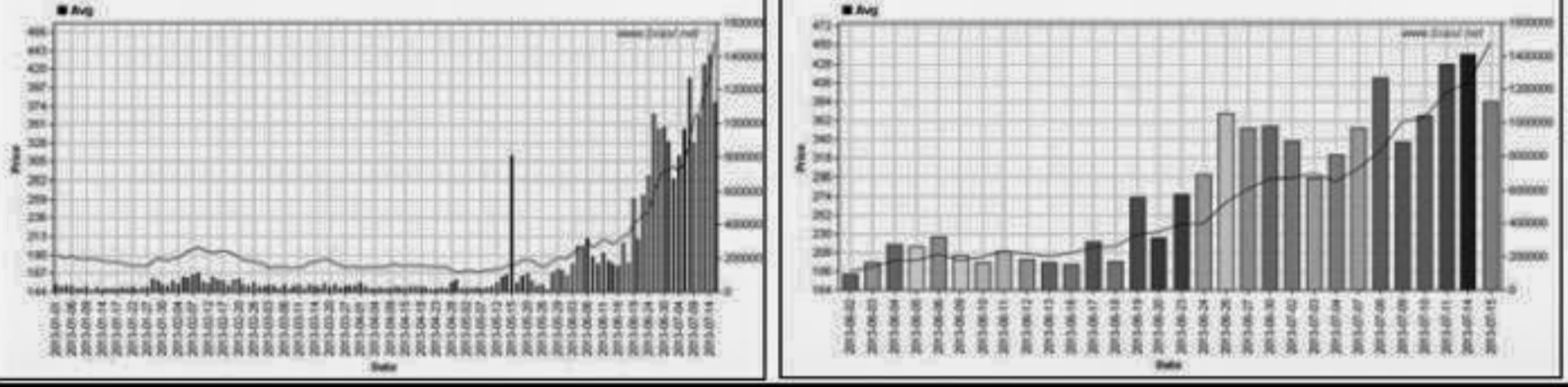
Chittagong Stock Exchange

Chittagong Stock Exchange. Table with columns: Company, Price Chn. (%), Price Scale, Yr Hi YrLo, Tover, Audited, Latest. Top entries include Prime Islami Life-A, JMI Syringes MDL-A, MBL 1st M.F.-A, Sonar Bangla Insu.-A, Legacy Footwear-A, Asia Insur. Ltd.-A, Bala Shoe Ltd.-A, Samata Leather-Z, Standard Insurance-A, Reliance 1 M.F.-A.



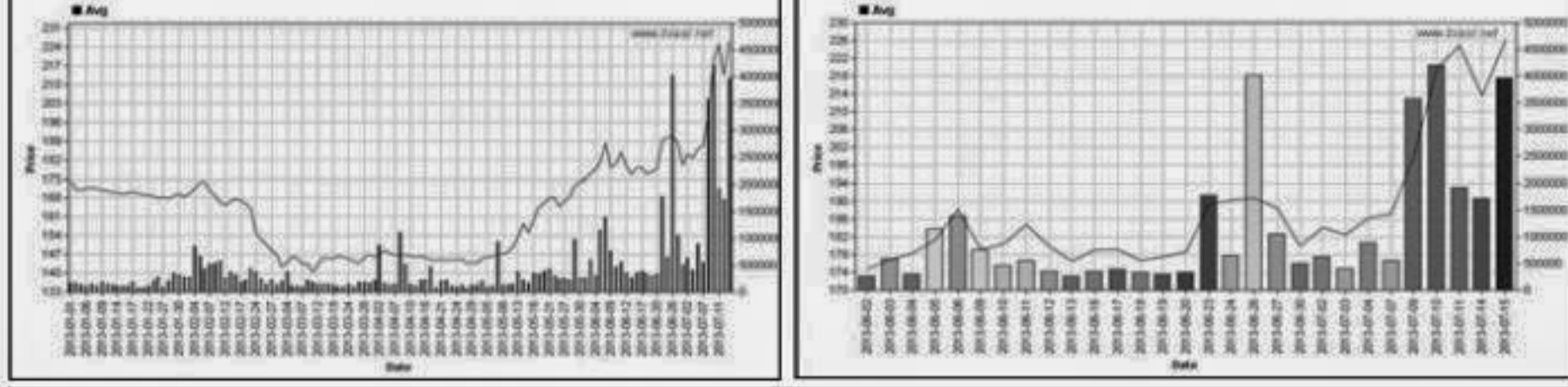
Turnover Leaders

Dhaka Stock Exchange Turnover Leaders. Table with columns: Company, Vol. Value % of, Price Scale, Audited, Latest. Top entries include Grameenphone-A, Meghna Petroleum-A, Padma Oil Co.-A, Jamuna Oil-A, BD Submarine Cable-A, etc.



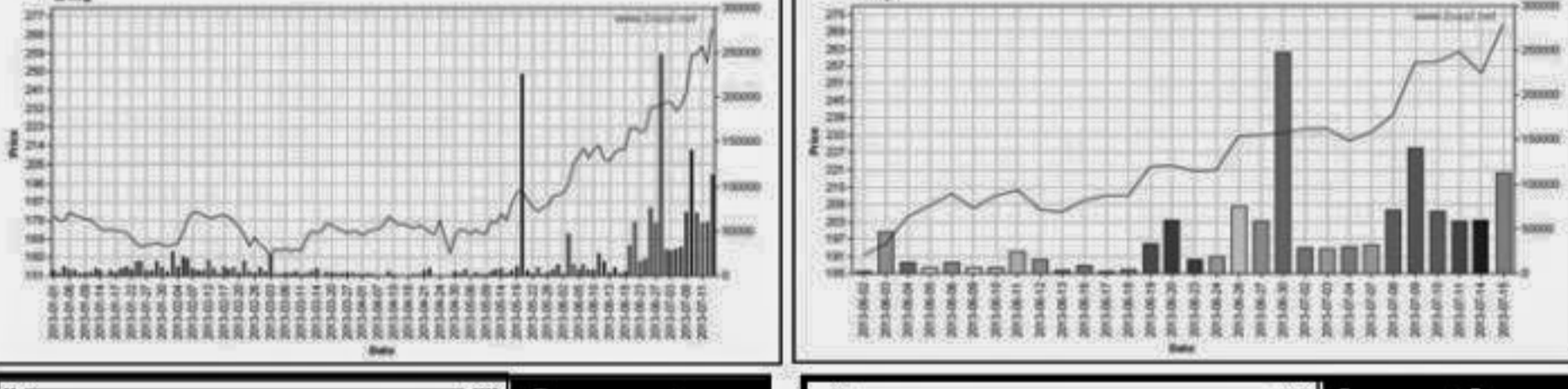
Market Cap. Leader

Dhaka Stock Exchange Market Cap. Leader. Table with columns: Company, Market Cap. % of, Price Scale, Audited, Latest. Top entries include Grameenphone-A, ICB-A, Titas Gas TDCLA, Square Pharma-A, BATBCL-A, Islami Bank BD-A, Padma Oil Co.-A, BD Submarine Cable-A, Prime Bank-A, Pabul Bank-A, BSRM Steels-A, Jamuna Oil-A, Meghna Petroleum-A, Rencala Ltd.-A, Summit Power-A, Lafarge Cement-Z, BEXIMCO Ltd.-A, DULC Ltd.-A, MSC BD Ltd.-A.



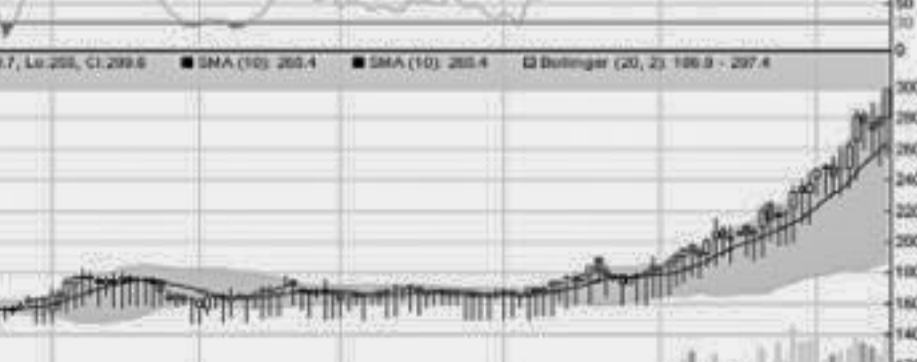
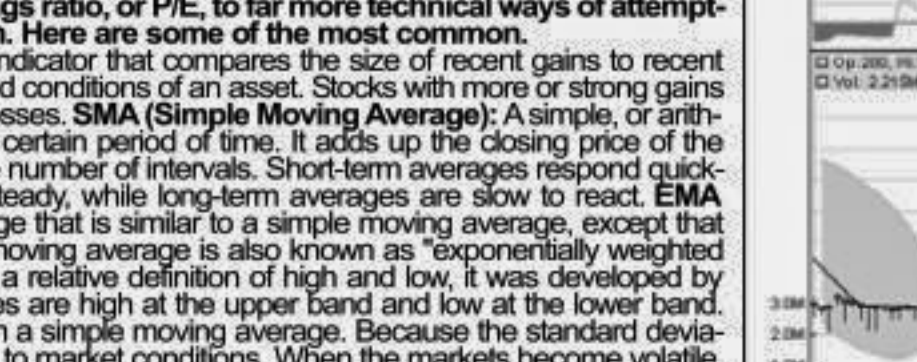
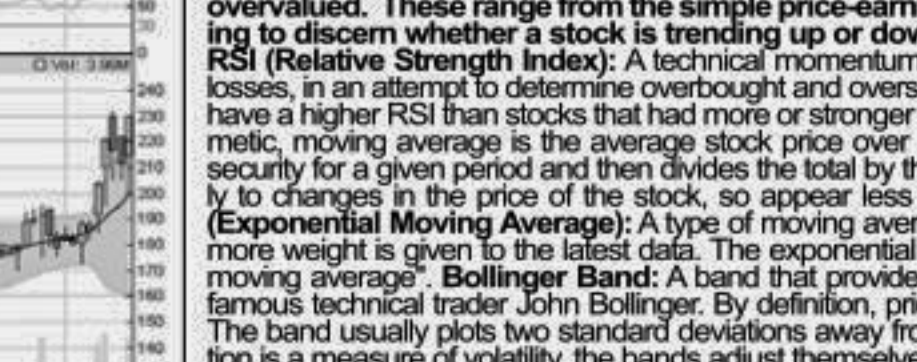
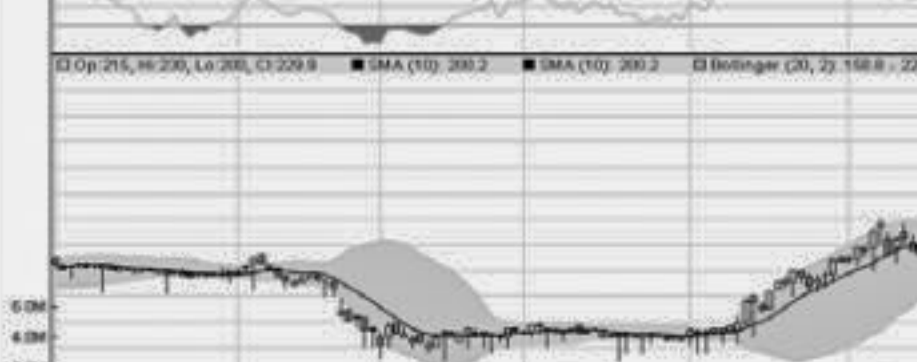
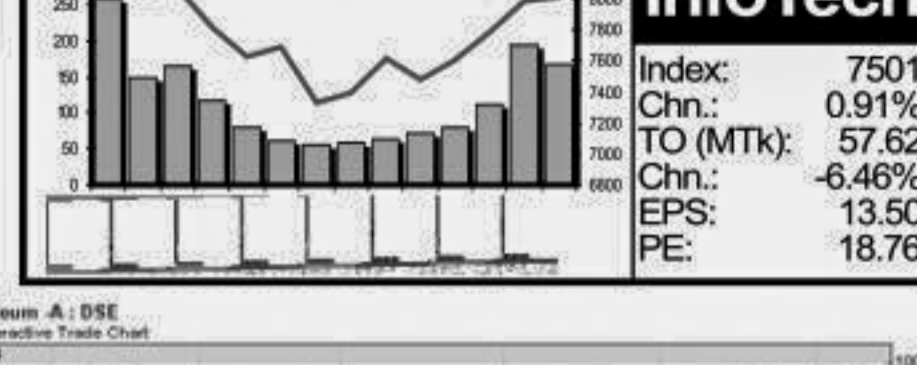
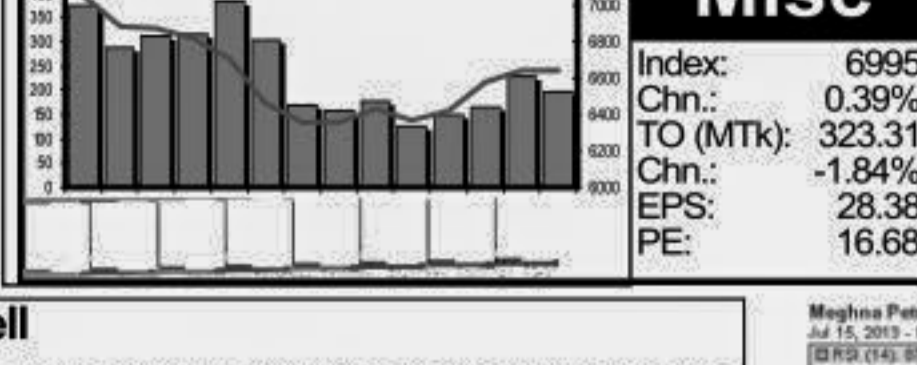
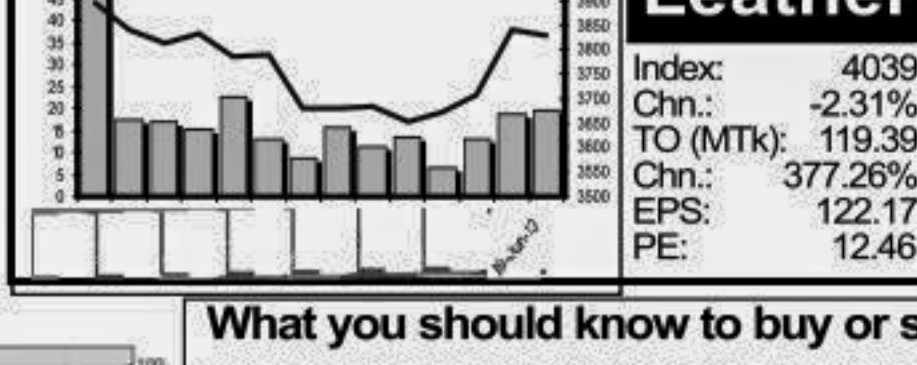
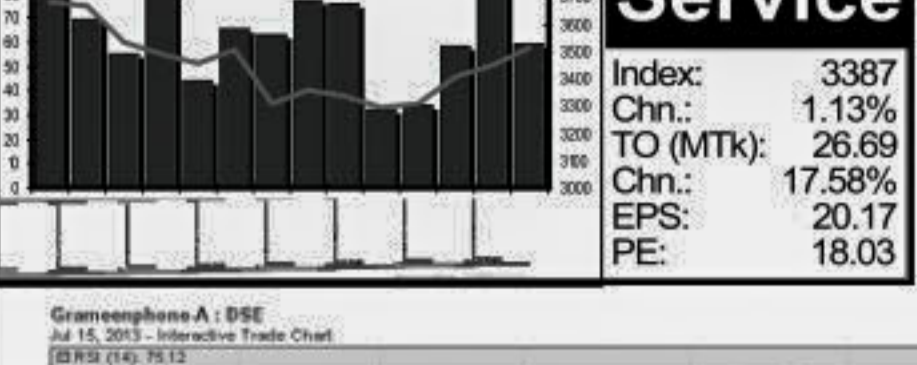
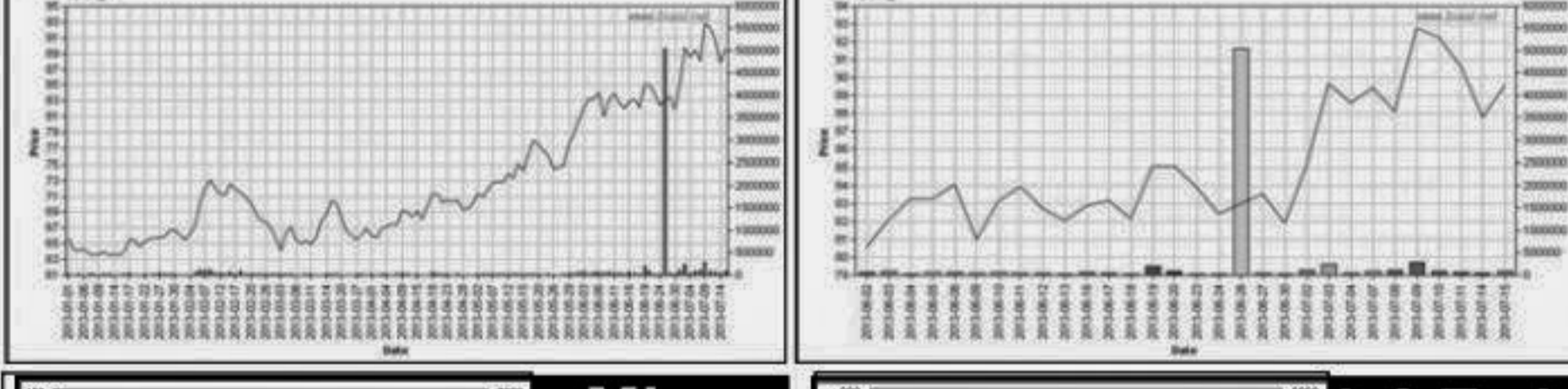
Chittagong Stock Exchange

Chittagong Stock Exchange. Table with columns: Company, Vol. Value % of, Price Scale, Audited, Latest. Top entries include Grameenphone-A, Meghna Petroleum-A, Jamuna Oil-A, Padma Oil Co.-A, BSC-A, Orion Pharma-N, UNITED AIR-A, UNICED RL-N, Aftab Auto-A, Summit Purbanchol Power-N, BD Submarine Cable-A, Olympic Ind.-A, BEXIMCO Ltd.-A, M.I. Cement-A, Singer BD-A, R.N. Spinning-A, Barakutullah E.D.-A, ConfidenceCement A, Titas Gas TDCLA.



Chittagong Stock Exchange

Chittagong Stock Exchange. Table with columns: Company, Market Cap. % of, Price Scale, Audited, Latest. Top entries include Grameenphone-A, ICB-A, Titas Gas TDCLA, Square Pharma-A, BATBCL-A, Islami Bank BD-A, Padma Oil Co.-A, BD Submarine Cable-A, Prime Bank-A, Pabul Bank-A, BSRM Steels-A, Jamuna Oil-A, Meghna Petroleum-A, Rencala Ltd.-A, Summit Power-A, Lafarge Cement-Z, BEXIMCO Ltd.-A, DULC Ltd.-A, MSC BD Ltd.-A.



Notes: Capital Gainer / Loser tables are prepared on the basis of the close price change of the traded issues. "Clo" is the Closing Price of the Day. "Chn %" indicates the price difference in percentage. "Avg" prices indicate weighted average prices of all transactions of the last day. P/E is the Average price of previous day. "D Hi" and "D Lo" indicate the highest and lowest transacted price last one running year, everyday the range moves by one day. "YrHi" and "YrLo" indicate the highest and lowest transacted price last one running year, everyday the range moves by one day. "NAV"=Net Asset Value Per Share. EPS is based on available latest audited accounts of the companies. EPS & Book value per share are diluted at book closing date whenever it is applicable. Only the positive earning companies are considered in calculating the P/E and EPS of the Sectors and Stock Exchanges. For latest EPS and PE corresponding report is mentioned in "R" column. Report note details are: Q1=1st Quarter, HY=Half Yearly, Q2= upto 3rd Quarter, Ad= Audited. Here all EPS are annualized and shown and used in PE calculation. For all company wise PE calculation average price is used. Companies having negative EPS showed PE as "-ve" means negative. Sectoral Index Graphs: Sectoral Index are taken from CSE and turnover is the combined turnover of the two stock exchanges. Only DSE sectoral EPS and PE are show in the sectoral graph.