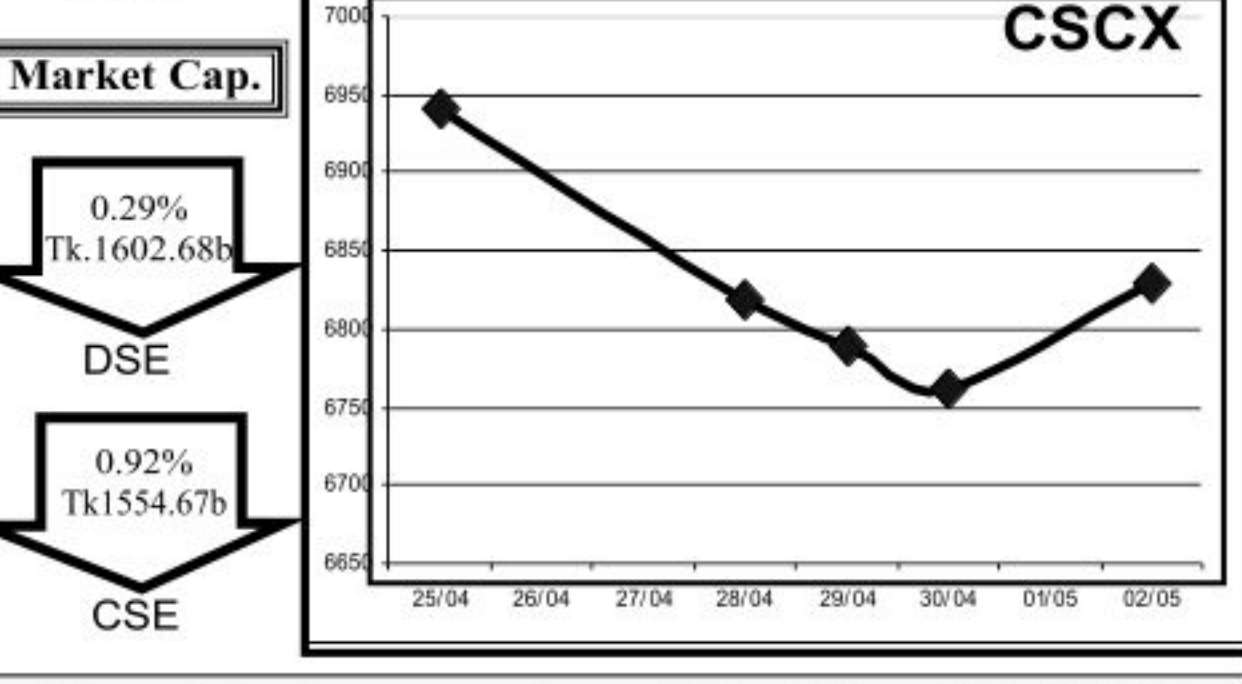
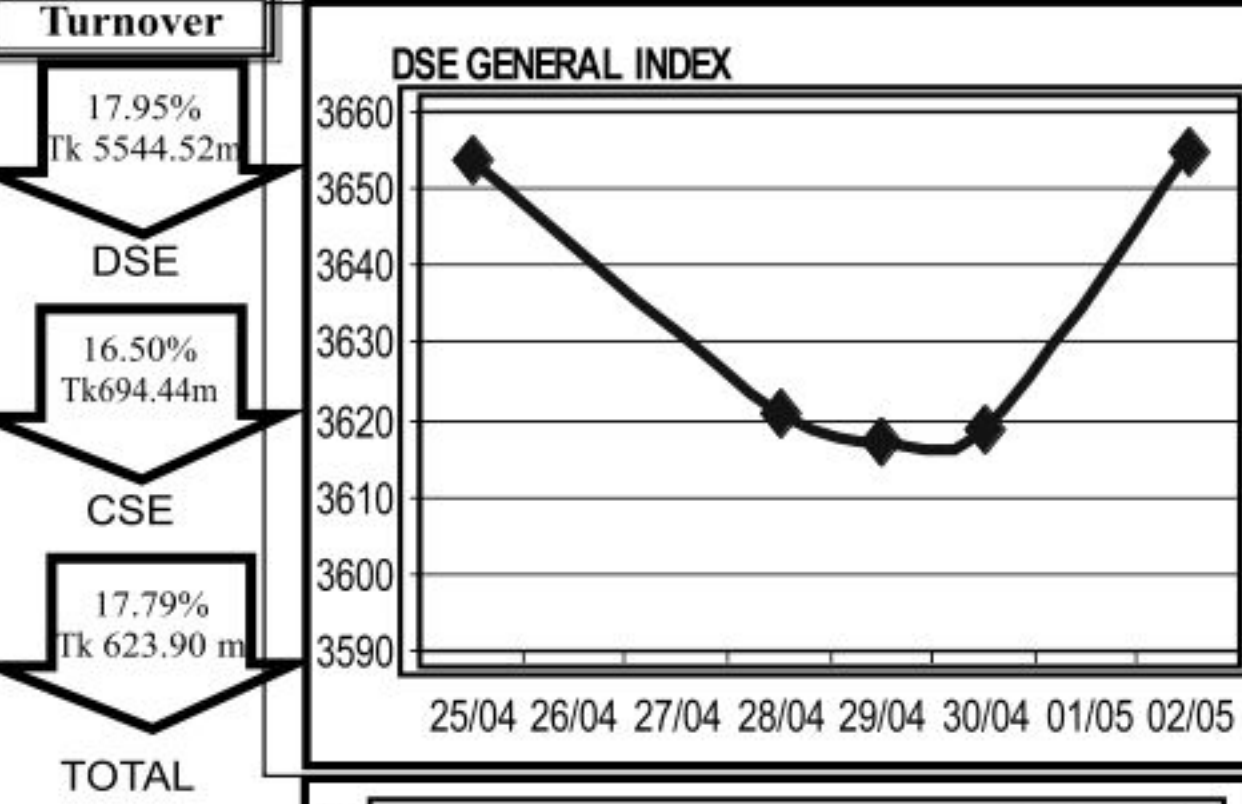
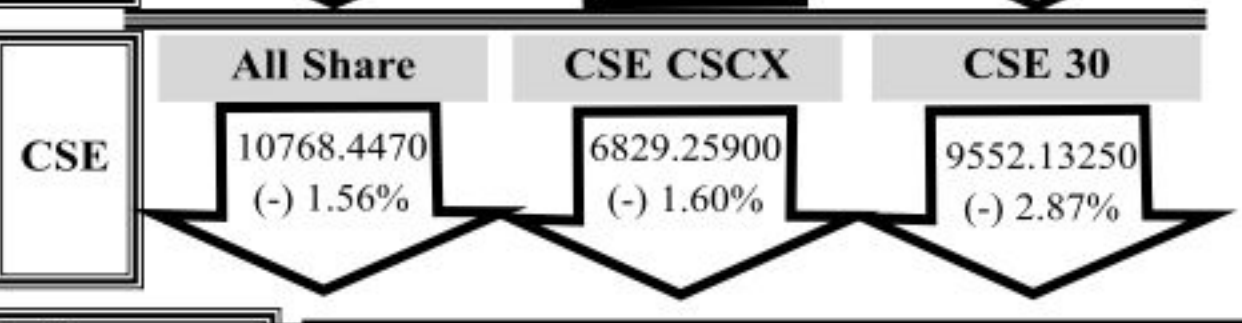
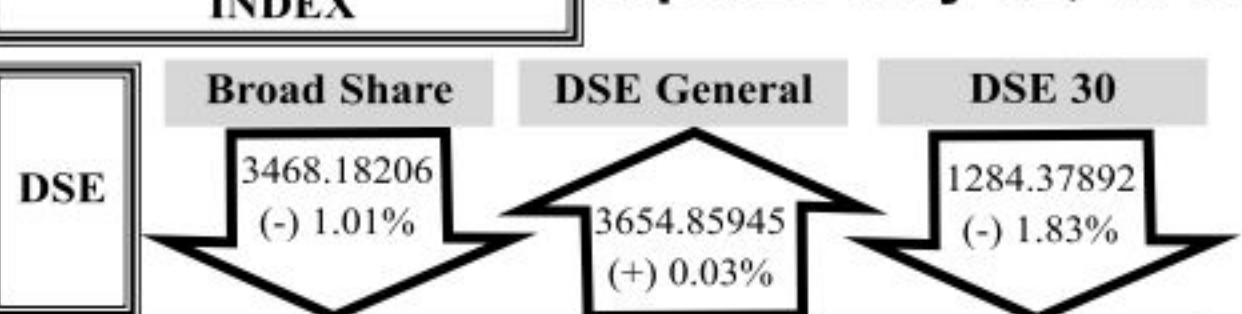


Weekly Capital Market Highlights:

INDEX Apr. 28-May 02, 2013



Key Features - Apr. 28 - May 02, 2013

Indicators	DSE	CSE	TOTAL
Turnover (Million Taka)	5,544.52	694.44	6,238.96
Turnover (Volume)	178,082,445	26,127,894	204,210,339
No. of Contract	243,063	39,865	282,928
Traded Issues	289	212	289
Issue Gain (Avg. Price Basis)	104	58	104
Issue Loss (Avg. Price Basis)	180	153	180
Unchanged Issue (Avg. Price Basis)	5	1	5
Market Cap. Equity (Billion Tk.)	1,602.68	1,554.67	1,602.68
Market Cap. Equity (Billion US\$)	19.43	18.84	19.43

Combined Turnover Leaders

Company	Volume (Share)	Value (M. Taka)	% of Total	Average Price
R. N. Spinning-A	11347936	315.18	5.05	27.77
BEXIMCO Ltd. -A	6583307	295.41	4.74	44.87
UNITED AIR-A	16293625	286.90	4.60	17.61
Orion Pharma-N	2839300	184.82	2.96	65.09
Bengal Windsor-N	4045200	182.12	2.92	45.02
Unique Hotel RL - N	2563505	181.46	2.91	70.78
Square Pharma -A	892667	159.82	2.56	179.04
Golden Harvest Agro-N	4844750	155.87	2.50	32.17
Summit Purbanchol Power-N	2937100	130.87	2.10	44.56
Olympic Ind. -A	1245668	128.25	2.06	102.95
National Bank - A	8487695	128.16	2.05	15.1
aarna technologies-A	3949300	120.09	1.92	30.41
Titas Gas TDCLA	1640696	116.04	1.86	70.73
CVO PetroChem RL-A	536910	109.45	1.75	203.86
BD Submarine Cable-A	867035	103.59	1.66	119.47
Malek Spinning-A	4887551	99.42	1.59	20.34
Premier Cement-N	1052000	88.10	1.41	83.75
Generation Next Fashions-A	4042200	85.65	1.37	21.19
Global Heavy Chemicals-N	1915250	85.23	1.37	44.5
Lafarge Cement-Z	2923500	84.99	1.36	29.07
Gramophone-A	577006	83.37	1.34	144.49
Pharma Aids A	496200	69.46	1.11	139.98
Argon Denims Limited-N	2122880	67.67	1.08	31.88
Islami Bank BD - A	1916988	67.51	1.08	35.22
Beximco Pharma -A	1160016	64.83	1.04	55.89
Bangas -A	185653	69.88	0.96	322.56
UCBL - A	3598407	58.14	0.93	16.16
Khulna Power-A	1287417	57.66	0.92	44.79
Jamuna Oil -A	282037	48.59	0.78	172.27
Meghna Petroleum -A	290647	48.38	0.78	166.45

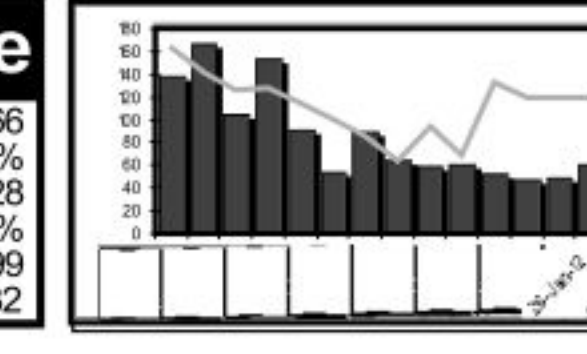
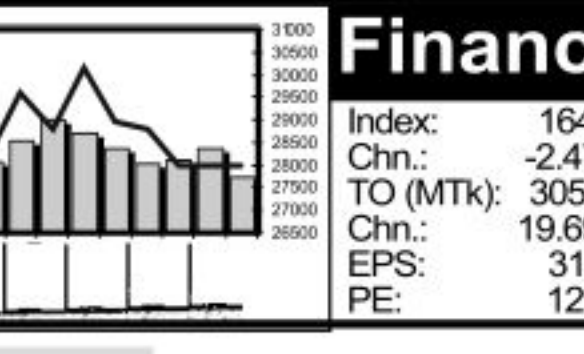
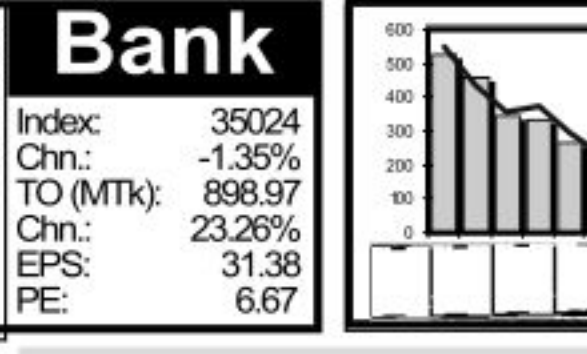
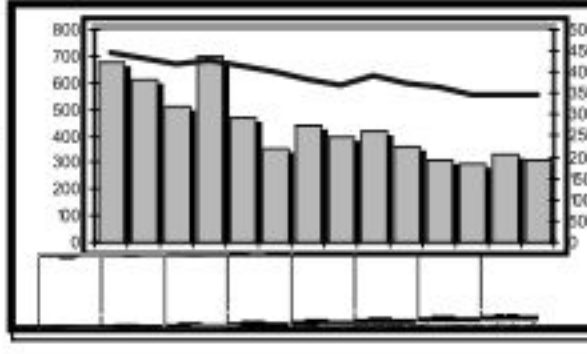
Sectoral Turnover Summary

Sector	DSE		CSE		Total	
	Mill. (Tk)	%	Mill. Tk.	%	Mill. Tk.	%
Bank	602.10	10.86	116.07	16.71	718.17	11.51
NBFI	231.36	4.17	27.52	3.96	258.88	4.15
Investment	197.32	3.56	15.30	2.20	212.62	3.41
Engineering	432.17	7.79	45.10	6.49	477.27	7.65
Food & Allied	356.83	6.44	32.73	4.71	389.56	6.24
Fuel & Power	523.27	9.44	54.20	7.80	577.46	9.26
Jute	15.83	0.29	0.00	0.00	15.83	0.25
Textile	906.70	16.35	115.99	16.70	1022.69	16.39
Pharma & Chemical	703.13	12.68	66.94	9.64	770.07	12.34
Paper & Packaging	0.01	0.00	0.00	0.00	0.01	0.00
Service	18.49	0.33	2.89	0.42	21.38	0.34
Leather	30.72	0.55	0.94	0.13	31.66	0.51
Ceramic	29.40	0.53	6.44	0.93	35.84	0.57
Cement	192.33	3.47	29.05	4.18	221.39	3.55
Information Technology	157.66	2.84	23.65	3.40	181.30	2.91
General Insurance	124.10	2.24	7.09	1.02	131.18	2.10
Life Insurance	118.08	2.13	7.74	1.11	125.82	2.02
Telecom	165.75	2.99	25.97	3.74	191.72	3.07
Travel & Leisure	332.65	6.00	71.89	10.35	404.54	6.48
Miscellaneous	293.25	5.29	44.87	6.46	338.12	5.42
Debtenture	113.22	2.04	0.06	0.01	113.28	1.82

Sectoral P/E & EPS

Sector	P/E		EPS(%)	
	DSE	CSE	DSE	CSE
Bank	6.67	6.61	31.38	31.38
NBFI	12.32	12.19	31.99	32.59
Investment	10.75	11.10	9.08	9.08
Engineering	14.30	14.44	35.37	33.61
Food & Allied	15.58	15.54	129.71	131.23
Fuel & Power	10.52	10.53	61.48	61.48
Textile	9.23	8.85	24.80	24.77
Pharma & Chemical	17.90	17.52	58.31	47.90
Paper & Printing	16.55	17.99	9.55	10.18
Service	14.12	13.99	20.17	20.17
Leather	10.40	10.45	122.81	151.88
Ceramic	21.67	21.57	16.30	16.30
Cement	12.70	12.62	43.40	43.40
IT	16.03	16.04	13.67	13.67
General Insurance	15.44	15.84	22.47	23.46
Life Insurance	16.19	16.05	68.15	68.15
Telecom	11.52	11.42	124.51	124.51
Travel & Leisure	13.48	14.66	25.53	24.89
Miscellaneous	13.00	13.11	31.65	30.75
Stock Exchanges	10.33	10.18	38.09	37.77

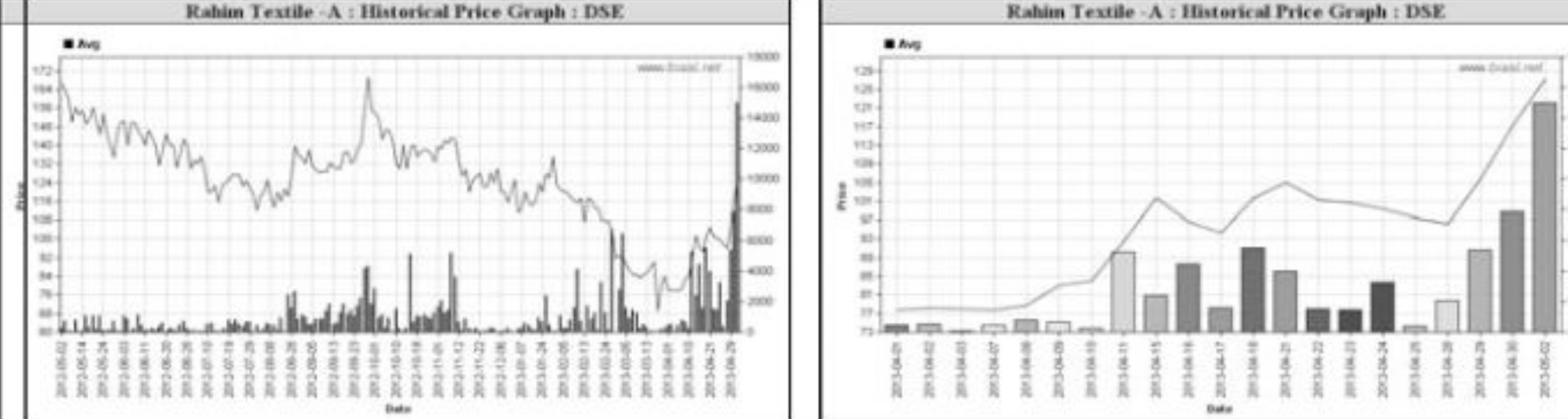
Prepared exclusively for Daily Star by Business Information Automation Service Line (BIASL) on the basis of information collected from daily stock quotations and audited reports of the listed companies. High level of caution has been taken to collect and present the above information and data. The publisher will not take any responsibility if any body uses this information and data for his/her investment decision. For any query please email to biasl@bol-online.com or send SMS to 01552153562 or go to www.biasl.net



Capital Gainers

Dhaka Stock Exchange

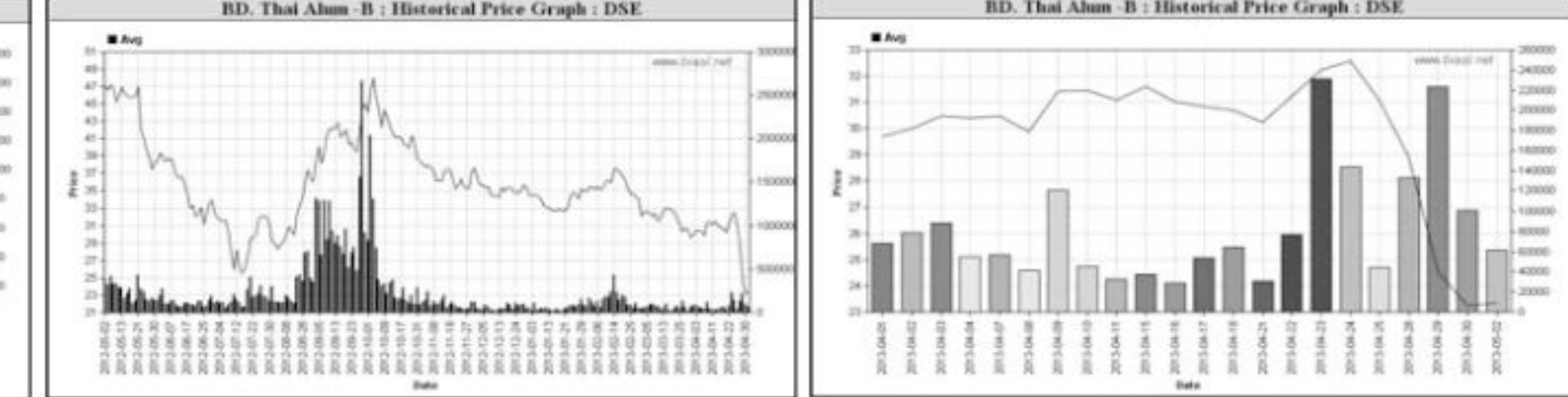
Company	Price Chn. (%)		Price Scale			T'over	Audited		Latest						
	Clo	AvG	W	Hi	Lo		M.Tk	NAV	EPS	PE	EPS	PE			
Rahim Textile -A	33.68	30.46	127.20	129.00	129.00	91.00	172.1	76.0	3.607	73.88	0.51	249.4	5.68	22.4	Q3
Kohinoor Chem -A	22.54	22.68	207.33	207.10	210.00	176.00	315.0	145.0	2.130	10.49	9.52	21.8	10.73	19.3	Q3
CVO PetroChem RL-A	20.67	18.11	215.30	220.70	221.00	166.00	267.0	87.0103	367	13.28	2.66	80.9	1.25	172.2	Q3
GeminiSeaFOOD	19.33	17.37	158.45	161.10	162.60	133.00	237.8	92.5	3.045	9.69	10.88	14.6	-12.76	-ve	HY
Zeal Bangla Sugar -Z	15.58	16.34	8.97	8.90	9.20	8.00	13.0	6.9	0.500	193.09	23.01	0.5	-20.23	-ve	Q3
PragatiLife Insu. -A	13.99	13.81	124.62	124.70	133.00	109.60	248.5	100.0	12.965	30.15	0.60	207.7	2.38	52.4	HY
GlaxoSK (BD) -A	11.21	12.71	567.66	559.60	578.70	498.00	640.0	470.0	6.530	123.32	20.25	28.0	65.24	8.7	Q1
Northern G Insur-A	11.18	8.10	32.97	33.80	34.00	27.40	64.0	26.1	6.608	11.15	1.77	18.6	1.77	18.6	Ad
Malek Spinning-A	10.36	10.0	21.09	21.30	21.80	17.50	38.5	13.9	90.270	46.87	1.44	0.5	1.99	10.6	Q3
Samortia Hospital -A	10.14	10.09	64.29	64.10	69.10	59.90	93.0	47.0	1.096	17.25	2.31	27.8	2.92	22.0	Q3



Capital Losers

Dhaka Stock Exchange

Company	Price Chn. (%)		Price Scale			T'over	Audited		Latest						
	Clo	AvG	W	Hi	Lo		M.Tk	NAV	EPS	PE	EPS	PE			
BD. Thai Alum -B	-22.73	-24.77	23.36	23.80	30.80	22.00	50.8	22.0	13.111	41.32	0.45	51.9	0.45	51.9	Ad
Premier Leasing-B	-17.46	-20.35	10.14	10.40	12.70	9.50	27.9	9.5	17.440	11.37	0.1	101.4	0.10	101.4	Ad
Daffodi Computers -A	-16.90	-16.52	17.79	17.70	20.90	17.10	28.0	12.0	11.992	11.14	1.12	15.9	0.79	22.5	Q3
Takaful Islami Insu-A	-16.90	-16.40	29.71	29.50	36.50	29.00	64.3	29.0	3.183	15.17	2.19	13.6	2.52	11.8	Ad
AB Bank -A	-15.36	-17.87	21.97	22.60	27.00	21.20	54.5	21.2	31.530	32.6	2.95	7.4	2.16	10.2	Q1
Salvo Chemicals-B	-13.50	-14.55	17.27	17.30	20.00	16.00	31.0	14.7	16.393	11.1	0.71	24.3	0.71	24.3	Ad
N C C Bank -A	-12.67	-15.44	12.71	13.10	15.20	12.10	25.0	12.1	21.481	15.88	1.9	6.7	2.09	6.1	Ad
BEXIMCO Ltd. -A	-12.48	-16.72	42.25	44.20	52.00	37.00	112.0	37.0238	157	99.75	3.73	11.3	3.73	11.3	Ad
Bangladesh Welding -A	-11.68	-13.91	17.15	17.40	20.50	16.60	35.5	16.6	10.587	17.66	0.35	49.0	0.35	49.0	Ad
ACI Formulations-A	-11.38	-13.91	67.15	68.50	78.40	65.40	157.0	65.0	24.284	38.08	3.33	20.2	5.60	12.0	Q1



Chittagong Stock Exchange

Company	Price Chn. (%)		Price Scale			T'over	Audited		Latest	
	Clo	AvG	W	Hi	Lo		M.Tk	NAV	EPS	PE