

Capital Market Highlights:

**January 06 2013**

**INDEX**

**DSE**  
All Share: 3528.57986 (+0.08%)  
DSE General: 4163.73745 (+0.07%)  
DSE 20: 3458.15967 (-0.11%)

**CSE**  
All Share: 12734.3049 (+0.05%)  
CSE CSCX: 8085.6784 (+0.02%)  
CSE 30: 11010.7129 (+0.51%)

**Turnover**  
DSE: 11.42% Tk 1458.91m  
CSE: 39.21% Tk 153.43m  
TOTAL: 15.11% Tk 1612.35m

**Market Cap.**  
DSE: 0.00% Tk 1798.63 b  
CSE: 0.02% Tk 1748.65 b

Capital Gainers

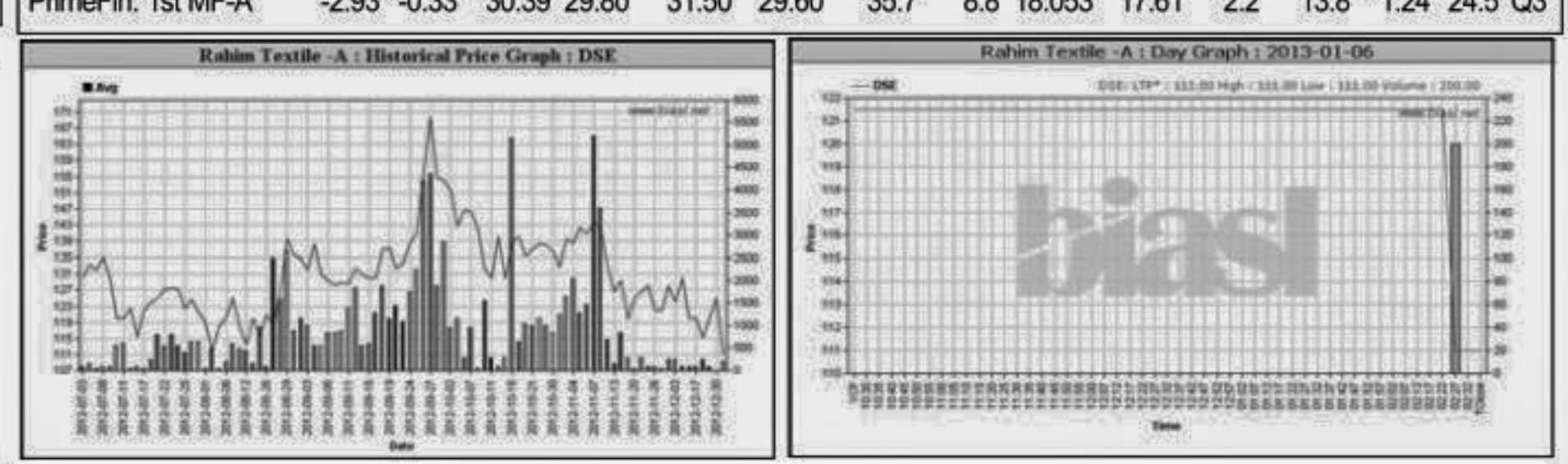
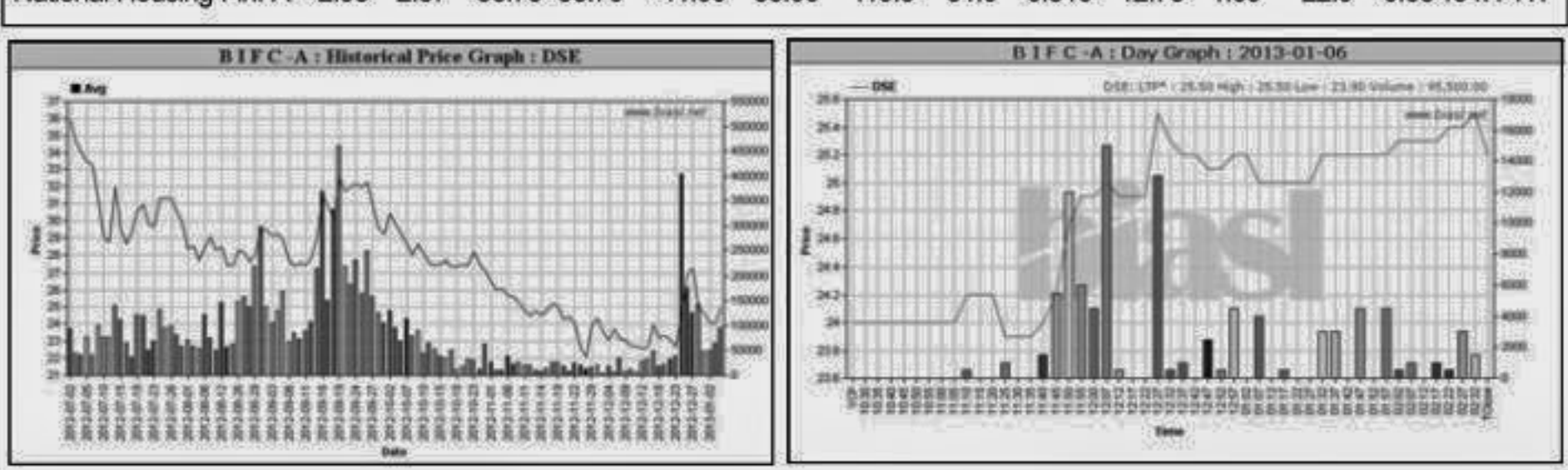
**Dhaka Stock Exchange**

Company	Price Chn. (%)		Price Scale		T'over		Audited		Latest						
	Clo	Avg.	D Hi	D Lo	Yr Hi	Yr Lo	NAV	EPS	PE	EPS PE R					
B I F C -A	5.00	3.92	24.95	25.20	25.50	23.90	48.4	21.0	2.383	10.72	0.25	99.8	-3.23	-ve	Q3
EBL NRB M.F.-A	4.44	4.64	9.48	9.40	9.50	9.00	11.0	6.5	0.995	10.88	0.22	43.1	0.48	19.8	Q1
1st BSRS M.F.-A	4.39	3.71	97.60	97.60	97.60	97.60	137.2	64.0	0.049	161.88	14.43	6.8	3.68	26.5	Q1
FAS Fin. & Inv. Ltd-B	4.20	4.34	27.43	27.30	27.90	25.50	60.2	20.1	2.570	17.74	0.17	161.4	-0.43	-ve	Q3
First Lease-A	3.98	4.72	41.69	41.80	42.20	39.00	86.4	32.0	12.888	14.48	1.37	30.4	1.96	21.3	Q3
Meghna Petroleum -A	3.61	4.84	164.82	163.60	167.00	160.00	267.0	109.0	47.319	40.41	16.98	9.7	19.14	8.6	HY
Meghna Con. Milk -B	3.19	2.11	9.70	9.70	9.70	9.70	26.8	9.3	0.039	-16.22	-6.68	-ve	-3.16	-ve	Q1
BD Finance-A	3.06	3.10	30.25	30.30	30.80	26.50	69.0	23.6	5.381	15.98	0.33	91.7	0.83	36.4	Q3
BEXIMCO Ltd.-A	3.01	5.17	64.91	65.00	66.00	57.00	132.9	47.0132	982	94.97	18.98	-3.4	7.08	9.2	Q3
National Housing Fin.-A	2.93	2.87	38.75	38.70	41.00	38.00	119.5	31.0	0.310	12.73	1.69	22.9	0.08484	4	HY

Capital Losers

**Dhaka Stock Exchange**

Company	Price Chn. (%)		Price Scale		T'over		Audited		Latest						
	Clo	Avg.	D Hi	D Lo	Yr Hi	Yr Lo	NAV	EPS	PE	EPS PE R					
Rahim Textile -A	-8.64	-11.20	111.00	111.00	111.00	218.6	110.1	0.022	73.88	0.51	217.6	2.24	49.6	Q1	
BD Fixed Income MF-A	-5.94	-6.31	9.50	9.50	9.50	14.0	8.5	0.005	10.27	0	0	-	0.84	11.3	Q1
Apex SpinningA	-5.57	-4.76	66.67	66.10	66.20	66.00	125.0	59.2	0.040	49.11	2	33.3	1.40	47.6	HY
LR Global BD MF1-A	-5.38	-5.68	8.80	8.80	9.10	8.60	10.6	7.4	0.088	10.82	0.5	17.6	0.50	17.6	Ad
Orion Infusions -A	-5.02	-4.00	46.13	45.40	48.40	45.30	60.9	32.0	7.972	1.73	8.72	5.3	2.68	17.2	Q1
GeminiSeaFoodA	-4.71	-4.59	178.10	178.10	178.10	178.10	280.0	150.0	0.009	9.69	10.88	16.4	10.88	16.4	Ad
Delta Life Insu. -Z	-4.32	-4.344025	454026	104031	0.04020	50	4680	0.2349	2.214	189.4	38.53	104.5	0.00	-	-
8th ICB M.F.-A	-3.86	-4.17	49.83	49.80	50.00	49.60	69.9	44.5	0.299	29.54	12.33	4.0	7.12	7.0	Q1
Dacca Dyeing-A	-3.62	-1.43	29.65	29.30	31.00	28.00	59.1	24.5	7.805	31.13	1.21	24.5	2.40	12.4	Q1
PrimeFin. 1st MF-A	-2.93	-0.33	30.39	29.80	31.50	29.60	35.7	8.8	18.053	17.61	2.2	13.8	1.24	24.5	Q3

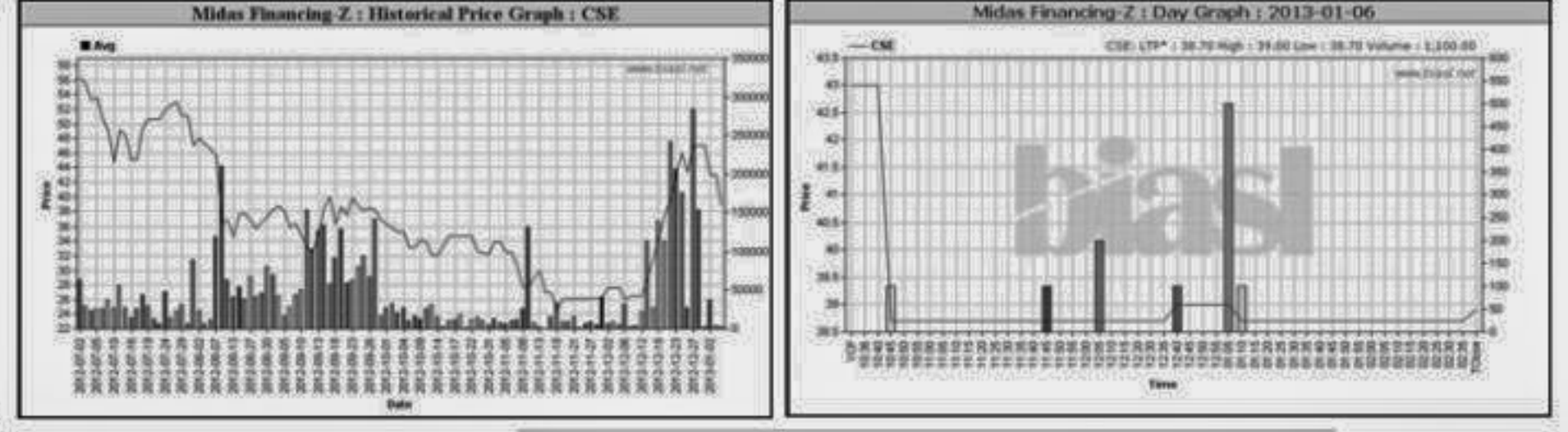
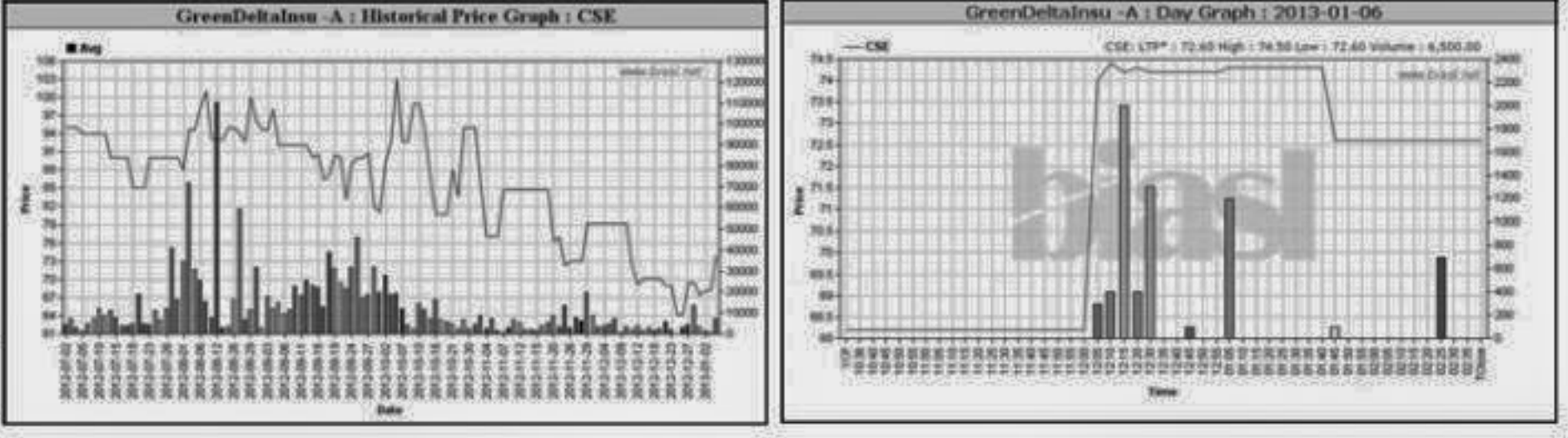


**Chittagong Stock Exchange**

Company	Price Chn. (%)		Price Scale		T'over		Audited		Latest						
	Clo	Avg.	D Hi	D Lo	Yr Hi	Yr Lo	NAV	EPS	PE	EPS PE R					
GreenDeltaInsu -A	6.45	8.63	74.03	72.60	74.50	72.60	168.0	62.1	0.481	48.7	2.62	28.3	3.44	21.5	Q3
B I F C -A	5.93	5.17	24.82	25.00	25.20	23.60	48.1	21.3	0.248	12.72	0.25	99.3	-3.23	-ve	Q3
First Lease-A	5.71	9.11	43.35	42.60	43.80	41.00	85.9	34.2	1.636	14.48	1.37	31.6	1.96	22.1	Q3
FAS Fin. & Inv. Ltd-B	4.91	6.86	27.59	27.80	28.10	26.90	59.5	21.0	0.295	17.74	0.17	162.3	-0.43	-ve	Q3
Meghna Petroleum -A	4.26	4.72	164.47	164.10	166.00	162.50	258.0	115.4	2.303	40.41	16.98	9.7	19.14	8.6	HY
Rupali InsurA	3.36	3.76	46.13	46.10	46.80	44.50	78.0	31.1	0.138	31.63	3.07	15.0	3.67	12.6	Q3
BD Finance-A	3.34	3.83	30.60	30.90	31.10	29.30	69.0	26.0	1.129	15.98	0.33	92.7	0.83	36.9	Q3
Ocean Containers-A	3.09	2.71	29.92	30.00	30.10	29.70	74.7	27.0	0.108	39.06	1.94	15.4	0.97	30.8	Q3
BEXIMCO Ltd.-A	3.01	5.32	64.78	65.00	65.70	56.80	130.9	48.8	18.186	94.97	18.98	-3.4	7.08	9.1	Q3
Provatl Insur.-A	2.89	2.89	32.00	32.00	32.00	32.00	51.7	25.5	0.008	14.06	1.46	21.9	2.16	14.8	Q3

**Chittagong Stock Exchange**

Company	Price Chn. (%)		Price Scale		T'over		Audited		Latest						
	Clo	Avg.	D Hi	D Lo	Yr Hi	Yr Lo	NAV	EPS	PE	EPS PE R					
Midax Financing-Z	-9.53	-9.63	38.86	38.90	39.00	38.70	79.0	24.1	0.043	10.05	-1.99	-ve	-4.72	-ve	Q1
Mercantile Insur-A	-6.73	-6.84	30.66	30.50	31.70	30.50	48.0	23.6	0.055	14.53	1.4	21.9	1.81	16.9	Q3
ICB -A	-5.65	-5.65	1462.50	1462.50	1465.00	1460.00	2360.0	1332.0	0.146	556.98	10.65	13.3	36.12	40.5	Q1
Orion Infusions -A	-5.58	-4.27	46.38	45.70	48.00	45.60	61.9	32.2	0.107	1.73	8.72	5.3	2.68	17.3	Q1
Asia Pacific Insu. -A	-3.94	-3.94	34.10	34.10	34.10	34.10	46.0	24.5	0.017	11.98	1.48	23.0	3.04	11.2	Q3
Trust Bank 1st MF-A	-3.23	-0.44	9.11	9.00	9.50	9.00	12.9	6.5	1.158	11.65	0.61	14.9	0.56	16.3	Q1
Greenen1-Scheme2-A	-3.11	-0.05	22.17	21.80	22.70	21.70	29.8	11.3	1.740	16.41	2.17	10.2	0.70	31.7	HY
Legacy Footwear -A	-2.88	-2.89	20.15	20.20	20.30	20.00	39.4	18.0	0.040	16.82	1.23	16.4	0.47	42.9	Q3
ICB AMCL3rd NRB MF-A	-2.74	-0.96	7.22	7.10	7.50	7.10	11.0	4.7	0.289	10.6	0	-	0.24	30.1	Q1
Standard Insurance-A	-2.14	-2.85	40.90	41.20	41.50	39.00	52.8	33.5	0.070	13.25	1.78	23.0	3.24	12.6	Q3



Key Features - January 06, 2013

Indicators	DSE	CSE	TOTAL
Turnover (Million Taka)	1,458.91	153.43	1,612.35
Turnover (Volume)	45,532,588	5,281,502	50,814,090
No. of Contract	47,483	7,943	55,426
Traded Issues	267	170	267
Issue Gain (Avg. Price Basis)	137	93	137
Issue Loss (Avg. Price Basis)	125	74	125
Unchanged Issue (Avg. Price Basis)	5	3	5
Market Cap. Equity (Billion Tk.)	1,798.63	1,748.65	1,798.63
Market Cap. Equity (Billion US\$)	21.80	21.20	21.80

Combined Turnover Leaders

Company	Volume (Share)	Value (M. Taka)	% of Total	Average Price
BEXIMCO Ltd. -A	2329332	151.17	9.38	64.9
Unique Hotel RL - N	818081	102.01	6.33	124.7
Pubali Bank - A	2402489	83.30	5.17	34.67
UNITED AIR-A	2867402	59.34	3.68	20.69
R. N. Spinning-A	1660977	56.61	3.51	34.08
Jamuna Oil -A	272104	49.70	3.08	182.65
Meghna Petroleum -A	301091	49.62	3.08	164.81
Summit Power -A	845663	45.25	2.81	53.51
National Bank -A	1506225	33.41	2.07	22.18
Envoy Textiles Ltd-N	565800	29.07	1.80	51.37
Beximco Pharma -A	471575	25.90	1.61	54.92
LafargeS Cement-Z	741000	24.98	1.55	33.71
Grameenphone-A	139200	23.92	1.48	171.82
BD Submarine Cable-A	184130	23.87	1.48	129.62
Generation Next Fashions-N	689000	23.15	1.44	33.6
PHP 1st M. F.-A	3069500	23.02	1.43	7.5
UCBL -A	974903	22.87	1.42	23.46
Prime Bank-A	592158	22.55	1.40	38.08
Grameen1-Scheme2 -A	956100	21.18	1.31	22.16
GBT Power Ltd-A	622700	20.78	1.29	33.37
Keya Cosmetics -A	657346	19.63	1.22	29.87
Khulna Power-A	373084	18.32	1.14	49.09
PrimeFin. 1st MF-A	595000	18.08	1.12	30.39
Popular Life 1st M.F.-A	2098000	16.50	1.02	7.86
Islamic Bank BD - A	368794	15.85	0.98	42.99
EXIM Bank-A	749062	15.55	0.96	20.76
First Lease-A	346898	14.52	0.90	41.87
Titas Gas TDCLA	224200	14.51	0.90	64.72
aamra technologies-A	408950	14.47	0.90	35.38
Aftab Auto.-A	172482	14.41	0.89	83.53

Sectoral Turnover Summary

Sector	DSE		CSE		Total	
	Mill. (Tk)	%	Mill. Tk.	%	Mill. Tk.	%
Bank	270.59	18.55	24.38	15.89	294.97	18.29
NBFI	68.29	4.68	7.89	5.14	76.17	4.72
Investment	143.28	9.82	14.35	9.35	157.63	9.78
Engineering	61.67	4.23	6.94	4.52	68.61	4.26
Food & Allied	14.45	0.99	0.42	0.28	14.88	0.92
Fuel & Power	212.30	14.55	13.09	8.53	225.39	13.98
Jute	0.72	0.05	0.00	0.00	0.72	0.04
Textile	179.96	12.33	28.13	18.33	208.09	12.91
Pharma & Chemical	78.19	5.36	5.80	3.78	83.99	5.21
Paper & Packaging	0.00	0.00	0.00	0.00	0.00	0.00
Service	6.26	0.43	0.52	0.34	6.78	0.42
Leather	4.43	0.30	0.04	0.03	4.47	