

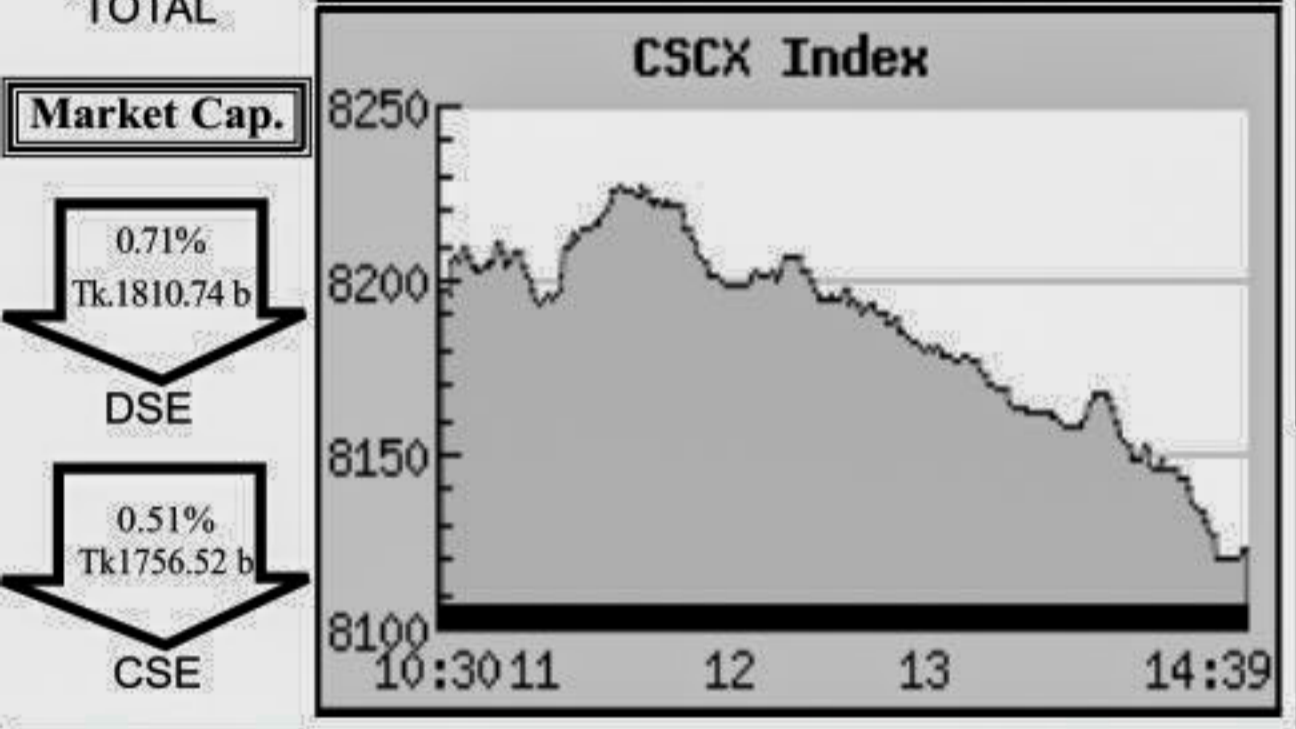
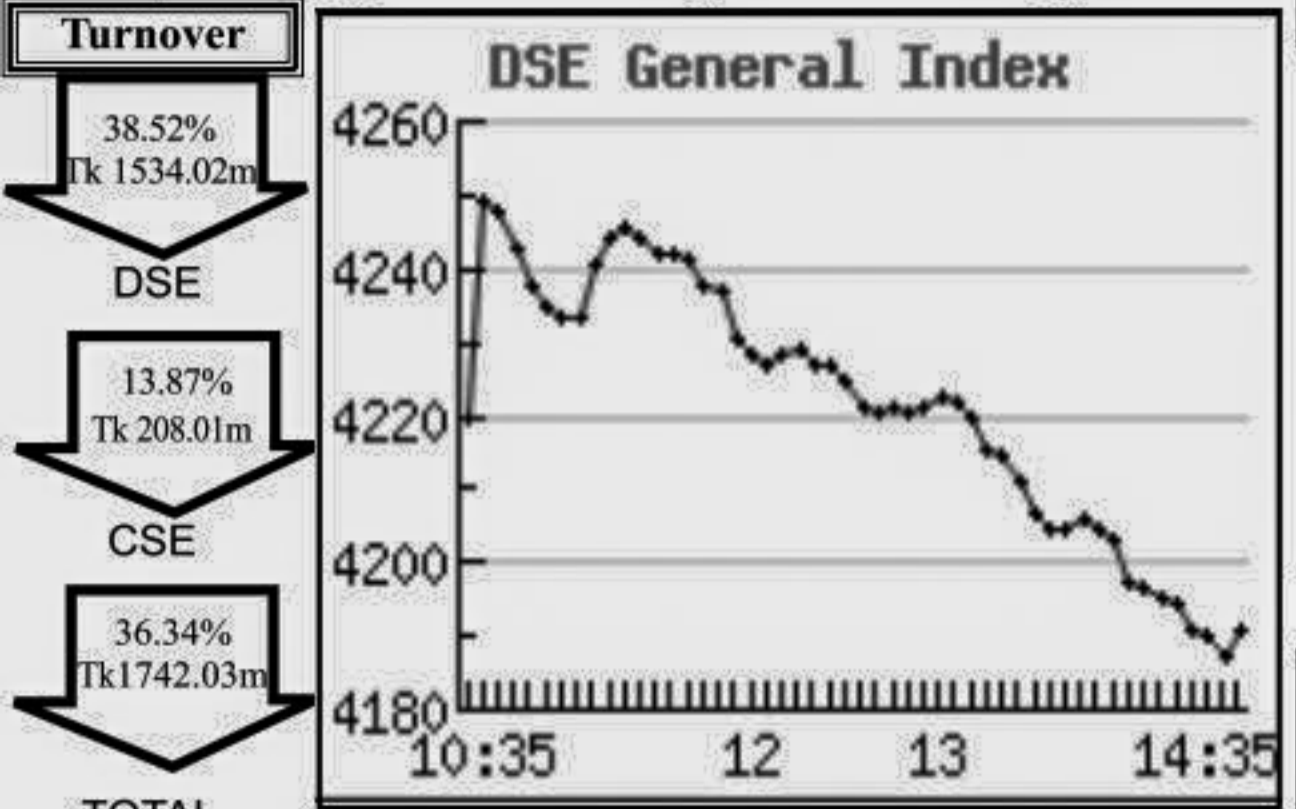
**Capital Market Highlights:**

**January 01 2013**

INDEX		
<b>DSE</b>	<b>All Share</b>	<b>DSE General</b>
3552.66024	4190.99132	3470.08988
(-) 0.69%	(-) 0.67%	(-) 0.07%
<b>CSE</b>	<b>All Share</b>	<b>CSE CSCX</b>
12803.5332	8132.0179	10997.0353
(-) 0.40%	(-) 0.53%	(-) 0.23%

**Turnover**

DSE	38.52%	Tk 1534.02m
CSE	13.87%	Tk 208.01m
<b>TOTAL</b>	<b>36.34%</b>	<b>Tk 1742.03m</b>



**Market Cap.**

DSE	0.71%	Tk 1810.74 b
CSE	0.51%	Tk 1756.52 b

**Key Features - January 01, 2013**

Indicators	DSE	CSE	TOTAL
Turnover (Million Taka)	1,534.02	208.01	1,742.03
Turnover (Volume)	45,918,769	6,427,251	52,346,020
No. of Contract	52,611	9,833	62,444
Traded Issues	265	175	265
Issue Gain (Avg. Price Basis)	106	74	106
Issue Loss (Avg. Price Basis)	156	94	156
Unchanged Issue (Avg. Price Basis)	3	7	3
Market Cap. Equity (Billion. Tk.)	1,810.74	1,756.52	1,810.74
Market Cap. Equity (Billion US\$)	21.95	21.29	21.95

**Combined Turnover Leaders**

Company	Volume (Share)	Value (M. Taka)	% of Total	Average Price
BEXIMCO Ltd. -A	1612404	101.48	5.83	62.94
Unique Hotel RL - N	785546	100.80	5.79	128.32
UNITED AIR-A	3819463	80.44	4.62	21.06
National Bank - A	3359328	75.39	4.33	22.44
EXIM Bank-A	2687403	57.53	3.30	21.41
AB Bank - A	1463176	47.97	2.75	32.78
Summit Power -A	892844	47.08	2.70	52.73
Envoy Textiles Ltd-N	783800	40.95	2.35	52.25
BD Submarine Cable-A	285840	37.87	2.17	132.47
Jamuna Oil -A	188400	34.04	1.95	180.66
R. N. Spinning-A	995365	34.02	1.95	34.17
Grameenphone-A	195200	33.95	1.95	173.94
Prime Bank-A	897178	33.70	1.93	37.56
Pubali Bank - A	1002289	33.13	1.90	33.06
UCBL - A	1349271	32.44	1.86	24.05
Dacca Dyeing-A	1052257	32.36	1.86	30.75
Beximco Pharma -A	534549	29.37	1.69	54.94
Generation Next Fashions-N	828000	28.56	1.64	34.49
Southeast Bank-A	1249151	25.32	1.45	20.27
Titas Gas TDCLA	369400	24.15	1.39	65.39
Meghna Petroleum -A	145956	23.45	1.35	160.65
Standard Bank -A	1098174	21.71	1.25	19.77
Aftab Auto-A	245895	21.18	1.22	86.15
Saifham Cotton-A	727600	20.94	1.20	28.78
One Bank -A	899380	20.74	1.19	23.07
Keya Cosmetics -A	619224	18.83	1.08	30.41
Barakatullah E. D.-A	561130	18.27	1.05	32.55
LafargeS Cement-Z	517500	17.28	0.99	33.39
Malek Spinning-A	642100	16.36	0.94	25.49
Al Arafat Islami B-A	606174	15.26	0.88	25.17

**Sectoral Turnover Summary**

Sector	DSE	CSE	Total
	Mill. (Tk.)	Mill. Tk.	Mill. Tk.
Bank	435.37	28.38	463.75
NBFI	69.08	4.50	73.58
Investment	52.09	3.40	55.49
Engineering	75.28	4.91	80.19
Food & Allied	12.88	0.84	13.72
Fuel & Power	178.56	11.64	190.20
Jute	0.89	0.06	0.95
Textile	218.35	14.23	232.58
Pharma & Chemical	79.15	5.16	84.31
Paper & Packaging	0.09	0.01	0.10
Service	6.48	0.42	6.90
Leather	3.97	0.26	4.23
Ceramic	9.09	0.59	9.68
Cement	25.15	1.64	26.79
Information Technology	14.02	0.91	14.93
General Insurance	25.32	1.65	26.97
Life Insurance	16.16	1.05	17.21
Telecom	65.28	4.26	69.54
Travel & Leisure	151.00	9.84	160.84
Miscellaneous	95.72	6.24	101.96
Debtenture	0.13	0.01	0.14

**Sectoral P/E & EPS**

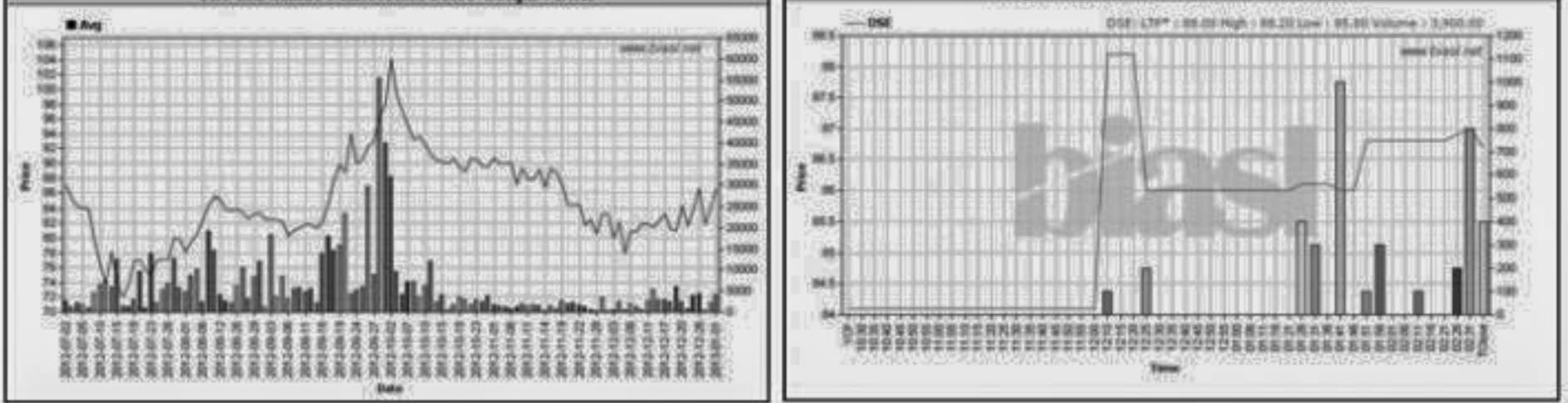
Sector	P/E		EPS(%)	
	DSE	CSE	DSE	CSE
Bank	8.68	8.65	32.47	32.47
NBFI	15.22	15.27	37.58	38.36
Investment	13.06	12.91	9.23	9.23
Engineering	19.13	19.54	34.86	32.95
Food & Allied	21.40	21.64	111.13	112.72
Fuel & Power	10.96	10.92	64.57	64.57
Textile	10.64	10.17	25.51	25.48
Pharma. & Chemical	19.09	18.67	59.00	50.74
Paper & Printing	17.63	16.90	9.55	10.18
Service	18.27	18.38	19.21	19.21
Leather	11.45	11.51	113.01	139.70
Ceramic	20.44	20.31	20.80	20.80
Cement	22.06	21.73	53.06	53.06
IT	16.97	16.92	13.85	13.85
General Insurance	21.85	21.93	20.20	20.31
Life Insurance	17.30	17.08	68.15	68.15
Telecom	12.73	12.68	133.87	133.87
Travel & Leisure	23.75	26.07	23.95	23.19
Miscellaneous	3.89	3.89	147.61	144.10
Stock Exchanges	11.73	11.58	41.32	41.10

Prepared exclusively for Daily Star by Business Information Automation Service Line (BIASL), on the basis of information collected from daily stock quotations and audited reports of the listed companies. High level of caution has been taken to collect and present the above information and data. The publisher will not take any responsibility if any body uses this information and data for his/her investment decision. For any query please email to biasl@bol-online.com or call 01552153562 or go to www.biasl.net

**Capital Gainers**

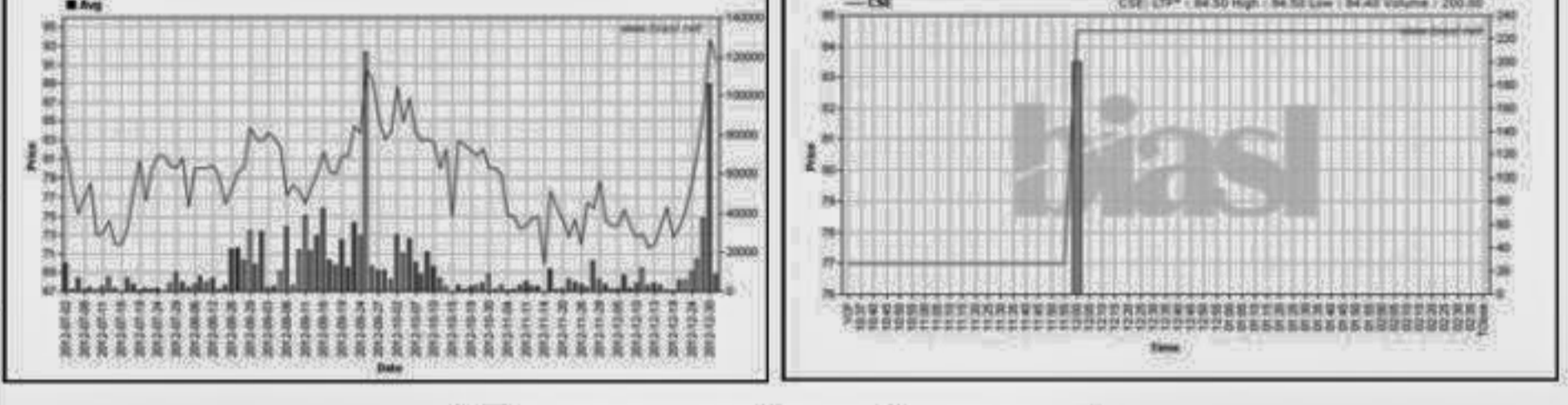
**Dhaka Stock Exchange**

Company	Price Chn. (%)		Price Scale				Turnover		BookV			
	Close	Avg.	Avg.	Close	W Hi	W Lo	Yr Hi	Yr Lo	M.Tk	Per S	EPS	PE
The Ibn Sina-A	3.09	3.03	86.64	86.70	88.20	79.90	148.9	70.0	0.347	19.5	4.37	19.83
Jute SpinnersA	2.62	2.23	66.45	66.60	69.00	66.00	168.0	63.9	0.103	17.42	2.06	32.26
Standard Bank -A	2.60	1.85	19.77	19.70	20.00	17.70	30.8	15.6	19.346	14.1	2.66	7.43
EXIM Bank-A	2.40	2.29	21.41	21.30	22.00	18.80	28.5	14.7	49.625	13.76	1.92	11.15
National Housing Fin.-A	1.87	1.94	38.29	38.20	38.70	37.00	125.0	31.0	0.253	12.73	1.69	22.66
Phoenix Finance-A	1.79	1.50	45.47	45.40	46.00	41.00	109.0	39.0	9.037	20.35	2.93	15.52
Pioneer Insur -A	1.64	1.52	74.25	74.20	75.00	73.20	122.8	63.6	0.594	22.82	4.94	15.03
ICB AMCL 1st NRB -A	1.48	1.63	27.48	27.40	27.50	27.10	31.1	21.8	0.316	35.31	4.06	6.77
Reckitt Benckiser -A	1.42	1.52	730.91	730.40	735.00	730.00	899.0	595.0	0.402	51.61	28.37	25.76
Bank Asia -A	1.40	2.00	21.98	21.80	23.00	20.50	38.7	18.5	4.792	19.98	3.23	6.80



**Chittagong Stock Exchange**

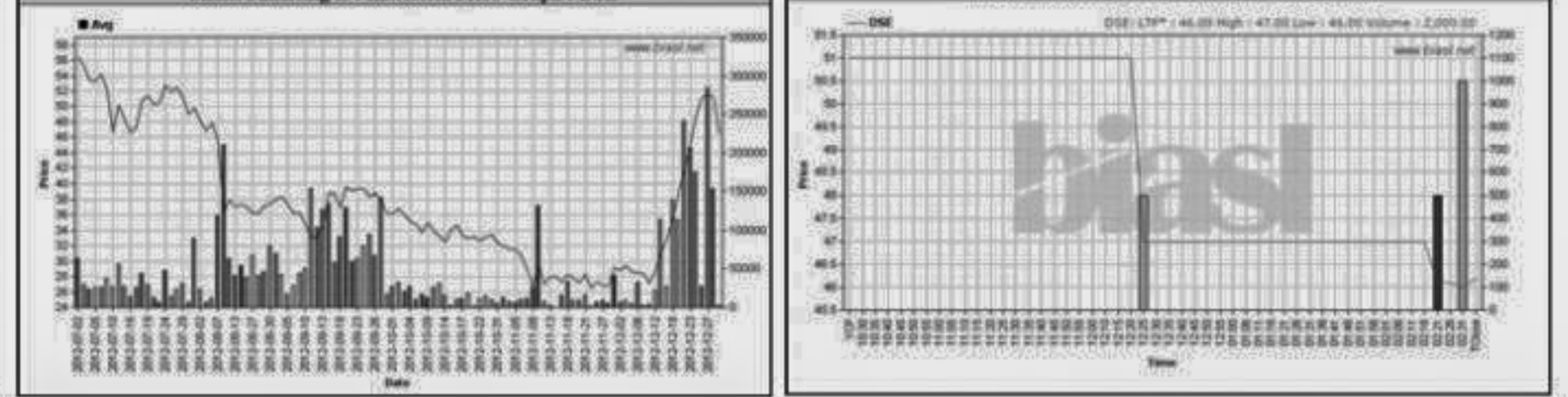
Company	Price Chn. (%)		Price Scale				Turnover		BookV			
	Close	Avg.	Avg.	Close	W Hi	W Lo	Yr Hi	Yr Lo	M.Tk	Per S	EPS	PE
Reliance Insur -A	9.74	9.68	84.45	84.50	84.50	84.40	115.5	70.0	0.017	72.57	4.67	18.08
Prime Islami Life -A	4.27	4.28	110.00	110.00	110.00	110.00	220.2	88.0	0.006	27.1	5.51	19.96
Prime Bank 1st MFA-A	2.94	2.94	7.00	7.00	7.00	7.00	10.5	4.8	0.007	11.18	0.42	16.67
Dhaka Ins. Ltd.-A	2.57	2.61	51.87	51.90	52.60	51.50	129.6	46.0	0.078	15.16	3.46	14.99
Meghna Petroleum -A	2.42	2.54	160.89	160.90	164.00	158.90	258.0	115.4	1.979	40.41	16.98	9.48
Dhaka Bank -A	2.04	3.33	25.17	25.00	25.50	23.00	46.0	20.0	0.743	19.91	4.81	5.23
EXIM Bank-A	1.91	2.24	21.42	21.30	21.70	21.20	29.0	15.0	7.904	13.76	1.92	11.34
Bank Asia -A	1.85	2.19	21.96	22.00	22.50	21.50	38.6	18.8	0.171	19.98	3.23	6.80
GSP Finance-A	1.82	2.49	33.78	33.60	34.60	33.20	55.0	27.0	0.341	24.36	1.08	31.28
ICB AMCL 2nd NRB -A	1.63	1.38	12.48	12.50	12.50	12.40	19.5	10.0	0.025	16.24	2.49	5.01



**Capital Losers**

**Dhaka Stock Exchange**

Company	Price Chn. (%)		Price Scale				Turnover		BookV			
	Close	Avg.	Avg.	Close	W Hi	W Lo	Yr Hi	Yr Lo	M.Tk	Per S	EPS	PE
Midas Financing-Z	-9.41	-9.30	46.50	46.20	47.00	46.00	84.0	25.0	0.093	10.05	-1.99	-23.37
EBL NRB M.F.-A	-7.45	-6.16	8.83	8.70	9.10	8.60	11.0	6.5	0.265	10.88	0.22	40.14
1st ICB M.F.-A	-7.06	-7.06	790.00	790.00	790.00	790.00	961.0	770.0	0.040	137.05	64.7	12.21
Islami Ins.BD-A	-6.61	-6.58	31.11	31.10	32.10	30.20	48.6	29.0	0.280	12.05	0.89	34.96
Beacon Pharma Ltd.-Z	-6.06	-1.85	15.90	15.50	16.70	14.90	36.8	12.7	6.848	11.97	0.33	48.18
2nd ICB M.F.-A	-5.96	-5.96	300.00	300.00	300.00	300.00	358.0	175.1	0.030	76.34	33.02	9.09
Prime Islami Life -A	-5.78	-4.52	110.59	109.30	114.90	106.00	234.0	88.0	0.299	27.1	5.51	20.07
Pragati Gen. I -A	-5.77	-6.26	58.07	58.80	61.40	58.10	102.5	47.0	0.030	52.13	2.15	27.01
GlaxoSK (BD) -A	-5.74	-5.96	536.00	537.30	550.00	532.00	759.9	480.0	0.134	103.07	23.42	22.89
Quasem Drycells -A	-5.41	-3.02	39.15	38.50	40.70	38.30	68.4	31.0	3.426	58.49	1.65	23.73



**Chittagong Stock Exchange**

Company	Price Chn. (%)		Price Scale				Turnover		BookV			
	Close	Avg.	Avg.	Close	W Hi	W Lo	Yr Hi	Yr Lo	M.Tk	Per S	EPS	PE
AB Bank 1st Mutual Fund-A-10.00-10.00	8.10	8.10	8.10	8.10	12.0	8.1	0.008	10.63	0.46	17.61		
ICB AMCL IslamicMFA-A	-6.58	-6.67	21.28	21.30	21.50	21.20	28.1	15.2	0.043	26.81	2.21	9.63
Imam Button -Z	-6.45	-6.45	8.70	8.70	8.70	8.70	20					