

Capital Market Highlights:

December 23 2012

INDEX

Index	Value	% Chn.
DSE All Share	3510.53738	(-) 0.69%
DSE General	4144.53827	(-) 0.72%
DSE 20	3428.42451	(-) 0.72%
CSE All Share	12625.2753	(-) 0.87%
CSE CSCX	8039.1311	(-) 0.86%
CSE 30	10935.8934	(-) 0.43%

Turnover

Market	Value (Tk)	% Chn.
DSE	505.89 m	13.97%
CSE	1787.61 b	0.73%
TOTAL	1787.61 b	0.84%

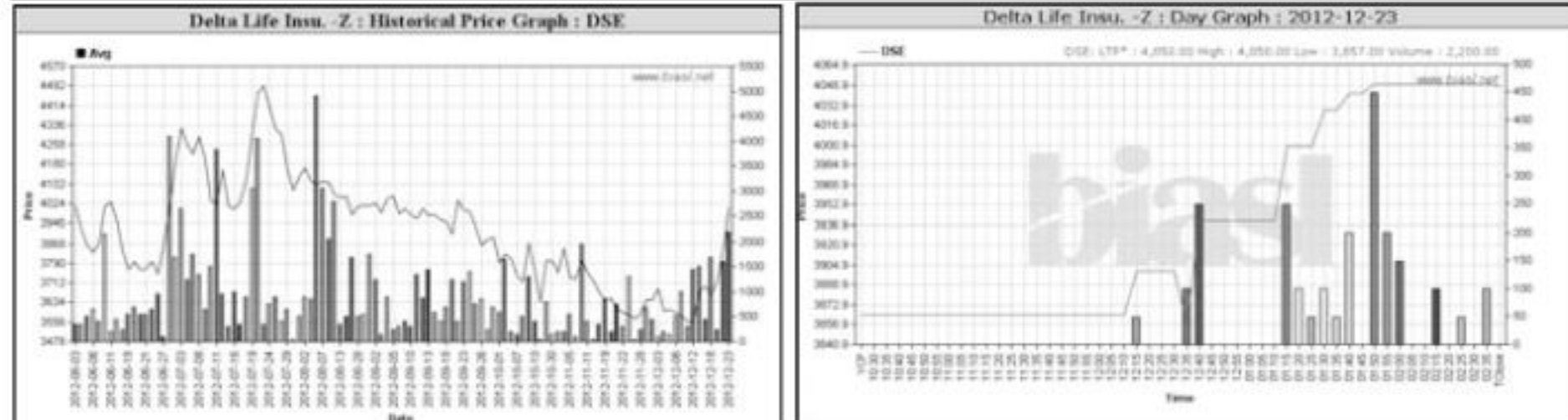
DSE General Index

CSCX Index

Capital Gainers

Dhaka Stock Exchange

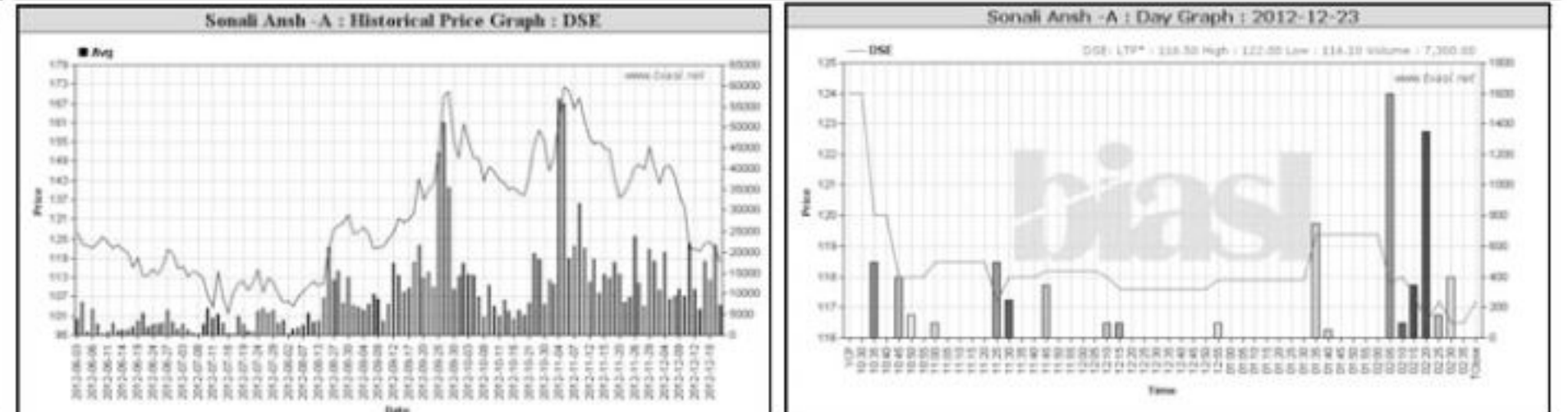
Company	Price Chn. (%)		Price Scale				Turnover				BookV	
	Close	Avg.	Close	W Hi	W Lo	Yr Hi	Yr Lo	M.Tk	Per S	EPS	PE	
Midas Financing-Z	8.18	7.87	44.98	46.30	46.90	40.50	84.0	25.0	9.294	10.05	-1.99	-22.60
Delta Life Insu.-Z	4.74	4.29	4,008.18	4,048.20	4,050.00	3,857.00	4,500.00	2,349.0	8.818	189.4	38.53	104.03



Capital Losers

Dhaka Stock Exchange

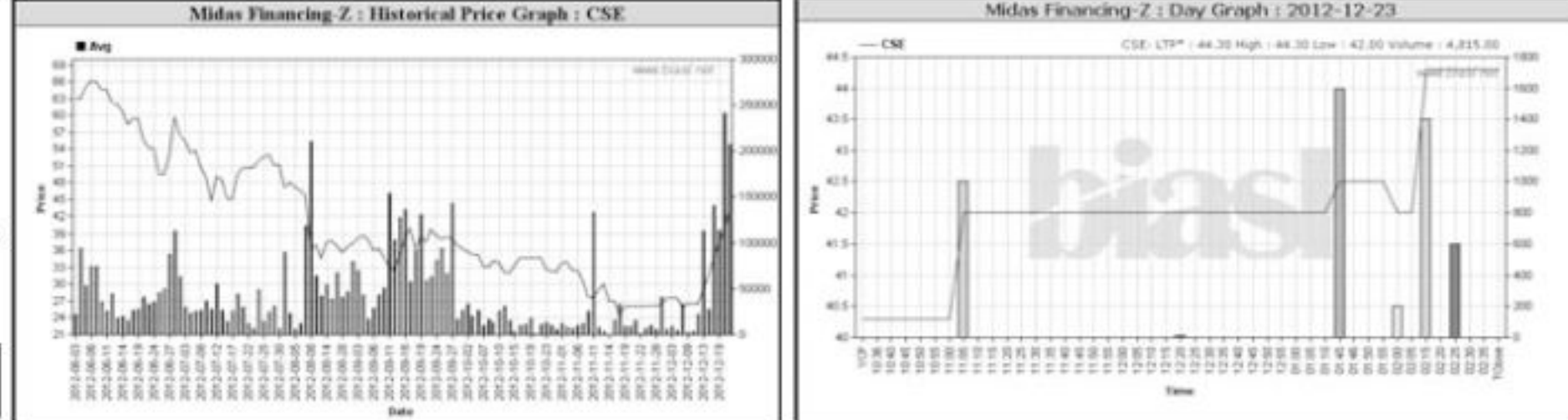
Company	Price Chn. (%)		Price Scale				Turnover				BookV	
	Close	Avg.	Close	W Hi	W Lo	Yr Hi	Yr Lo	M.Tk	Per S	EPS	PE	
Sonali Ansh-A	-5.48	-4.22	117.81	117.20	122.00	116.10	195.0	99.5	0.860	218.8	5.54	21.27
Malek Spinning-A	-4.94	-4.23	25.61	25.00	26.70	24.00	38.5	13.9	10.989	46.87	-1.44	-17.78



Turnover Leaders

Dhaka Stock Exchange

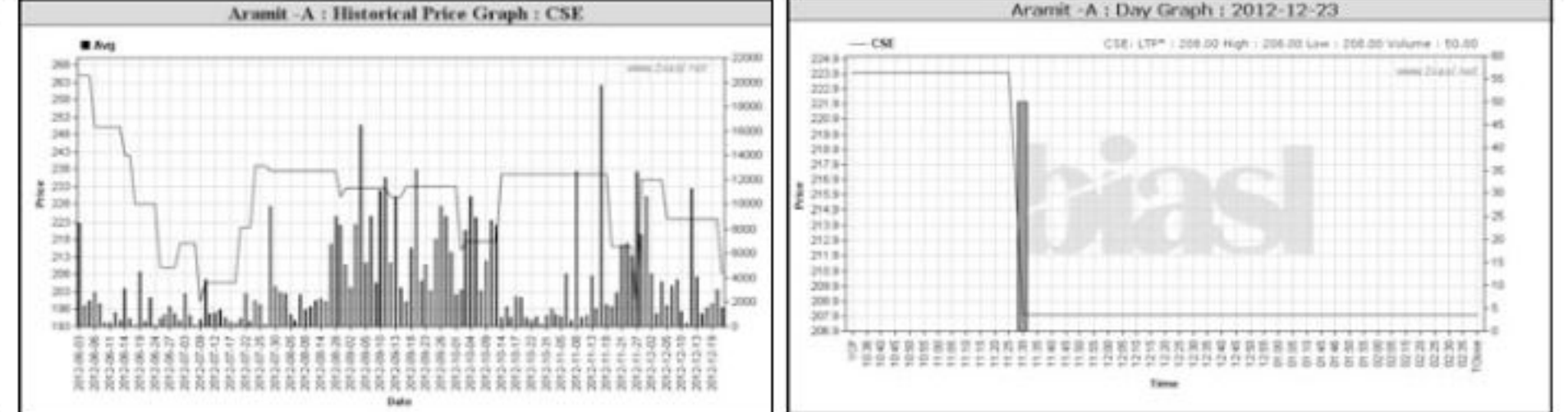
Company	Vol.	Value	% of Total	Price Scale				C. Avg	BookV		
				Clo	Chn	PW Clo	W Hi		W Lo	Avg.	Per S
BEXIMCO Ltd.-A	3847534	245,802.12	48.8	63.89	64.10	65.30	55.60	3.89	94.97	18.98	3.37



Market Cap. Leader

Dhaka Stock Exchange

Company	Market Cap.	% of Total	Average				Price Scale				BookV	
			Price	Chn.	PW	W Hi	W Lo	W Clo.	Chn%	Per S	EPS	PE
Grameenphone-A	229,808	12.86	170.19	-0.24	170.6	171.8	169	169.9	0	28.8	13.99	12.17



Key Features - December 23, 2012

Indicators	DSE	CSE	TOTAL
Turnover (Million Taka)	1,970.28	505.89	2,476.17
Turnover (Volume)	56,280,497	8,951,218	65,231,715
No. of Contract	63,478	11,613	75,091
Traded Issues	264	165	264
Issue Gain (Avg. Price Basis)	34	25	34
Issue Loss (Avg. Price Basis)	228	139	228
Unchanged Issue (Avg. Price Basis)	2	1	2
Market Cap. Equity (Billion Tk.)	1,787.61	1,738.51	1,787.61
Market Cap. Equity (Billion US\$)	21.67	21.07	21.67

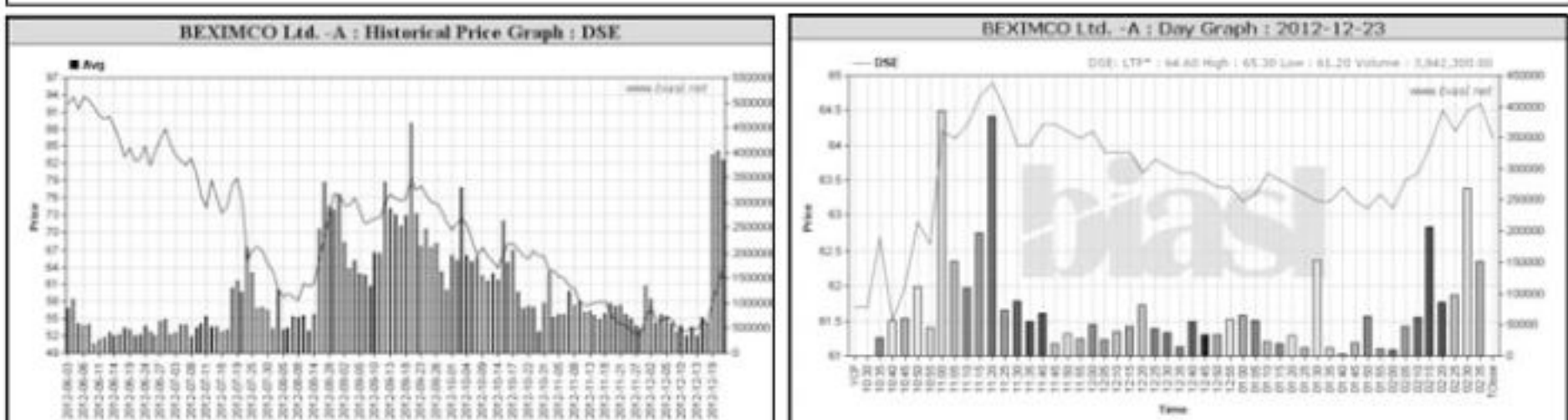
Combined Turnover Leaders

Company	Volume (Share)	Value (M. Taka)	% of Total	Average Price
BEXIMCO Ltd.-A	4512470	287.99	11.63	63.82
Square Pharma -A	1628012	276.69	11.17	169.95
UNICED AIR-A	8896319	188.40	7.61	21.18

Turnover Leaders

Dhaka Stock Exchange

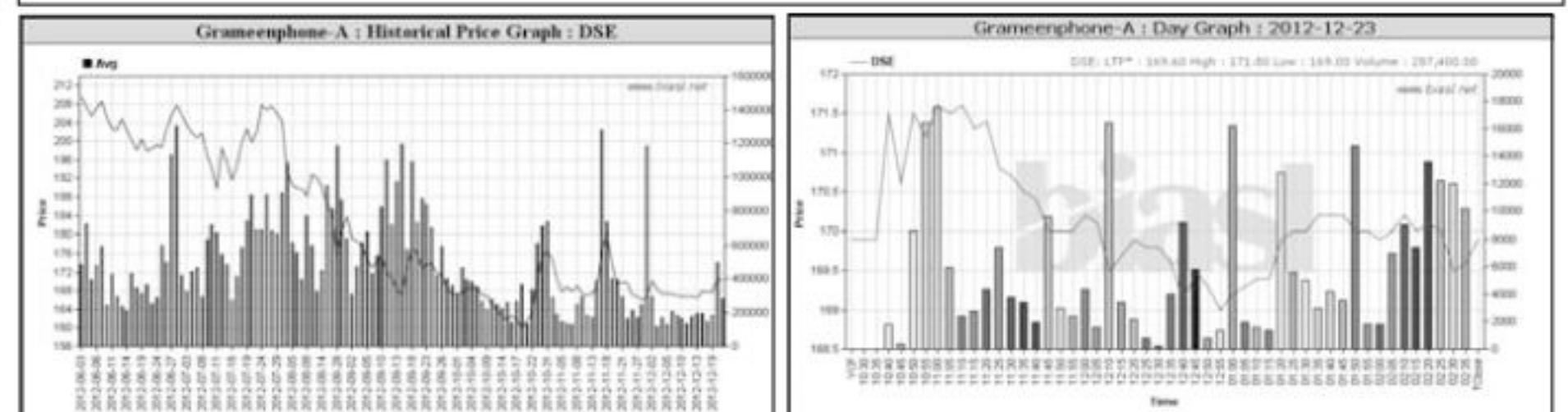
Company	Vol.	Value	% of Total	Price Scale				C. Avg	BookV		
				Clo	Chn	PW Clo	W Hi		W Lo	Avg.	Per S
BEXIMCO Ltd.-A	3847534	245,802.12	48.8	63.89	64.10	65.30	55.60	3.89	94.97	18.98	3.37



Market Cap. Leader

Dhaka Stock Exchange

Company	Market Cap.	% of Total	Average				Price Scale				BookV	
			Price	Chn.	PW	W Hi	W Lo	W Clo.	Chn%	Per S	EPS	PE
Grameenphone-A	229,808	12.86	170.19	-0.24	170.6	171.8	169	169.9	0	28.8	13.99	12.17



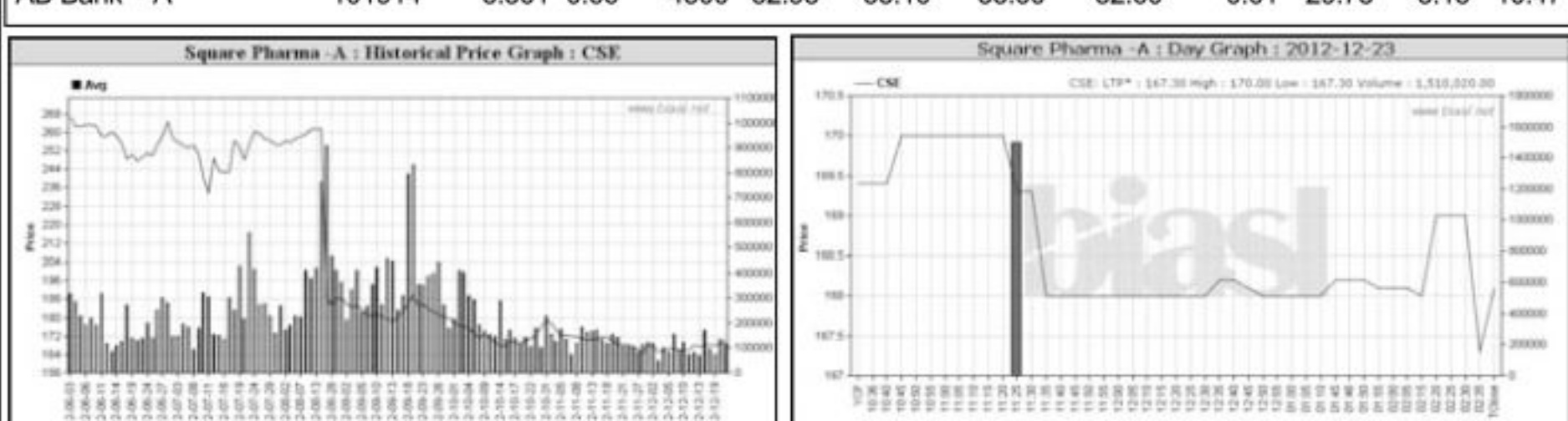
Sectoral Turnover Summary

Sector	DSE	CSE	Total
Mill. (Tk)	%	Mill. Tk.	%
Bank	392.92	19.94	412.86
NBFI	89.30	4.53	93.83
Investment	61.11	3.10	64.21

Turnover Leaders

Chittagong Stock Exchange

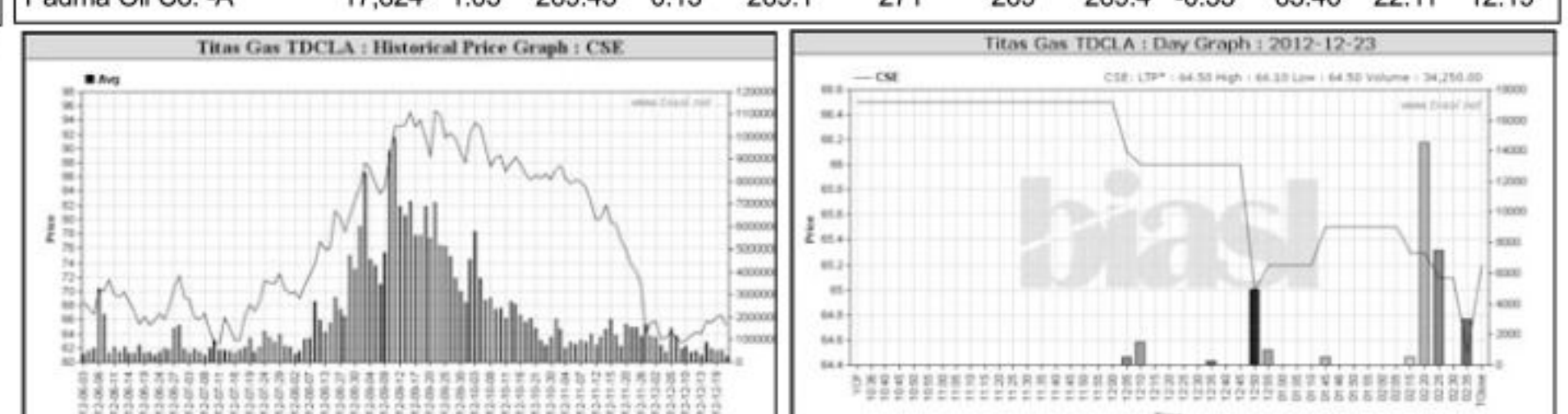
Company	Vol.	Value	% of Total	Price Scale				C. Avg	BookV		
				Clo	Chn	PW Clo	W Hi		W Lo	Avg.	Per S
Square Pharma -A	1510020	256,690.50	50.74	150,000,169.99	168.10	170.00	167.30	-0.77	42.09	7.81	21.77



Market Cap. Leader

Chittagong Stock Exchange

Company	Market Cap.	% of Total	Average				Price Scale				BookV	
			Price	Chn.	PW	W Hi	W Lo	W Clo.	Chn%	Per S	EPS	PE
Grameenphone-A	229,227	13.19	169.76	-0.73	171.01	171.9	169	169.3	-0.47	28.8	13.99	12.13



Sectoral P/E & EPS

Sector	P/E		EPS(%)	
	DSE	CSE	DSE	CSE
Bank	8.52	8.48	32.47	32.47
NBFI	14.80	15.00	37.58	38.36
Investment	12.44	13.00	9.23	9.23

What you should know to buy or sell

Investors follow many calculations of corporate performance when deciding if a stock is undervalued or overvalued. These range from the simple price-earnings ratio, or P/E, to far more technical ways of attempting to discern whether a stock is trending up or down. Here are some of the most common.

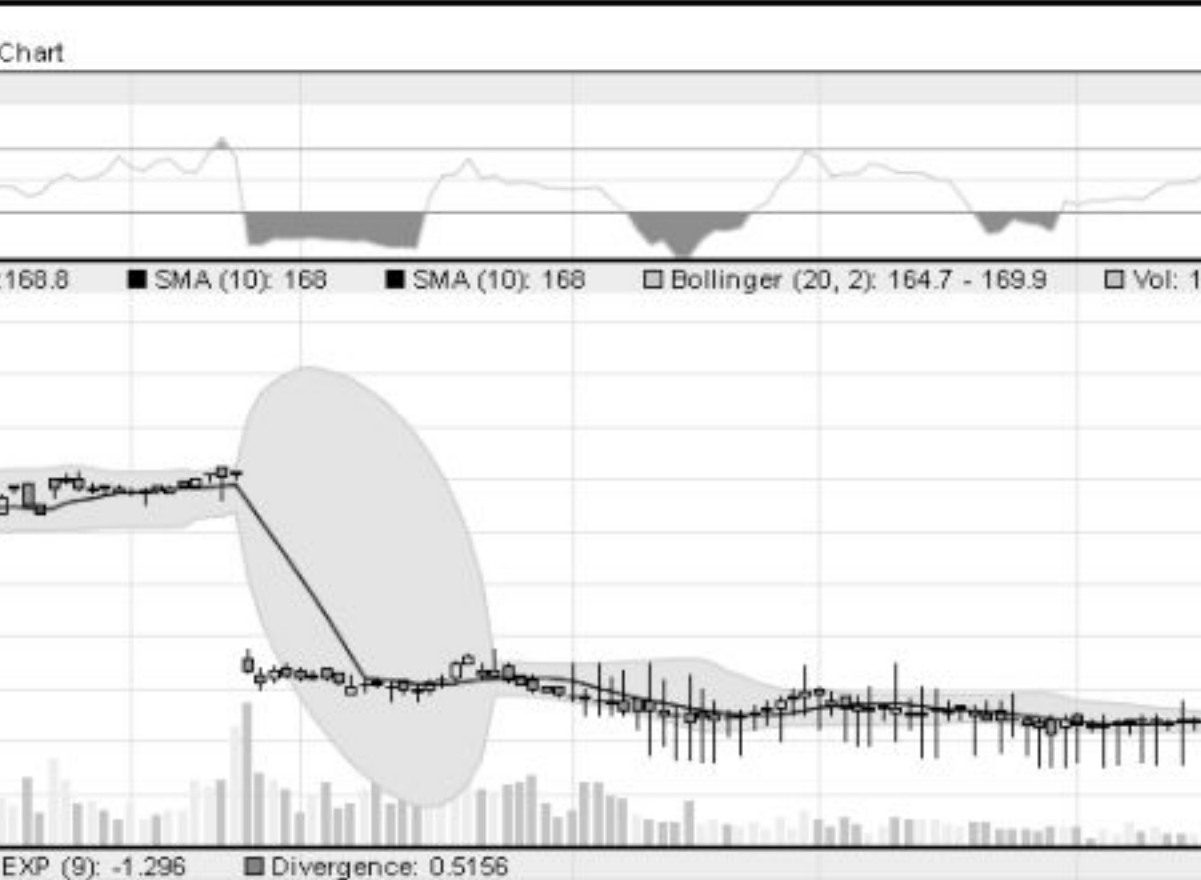
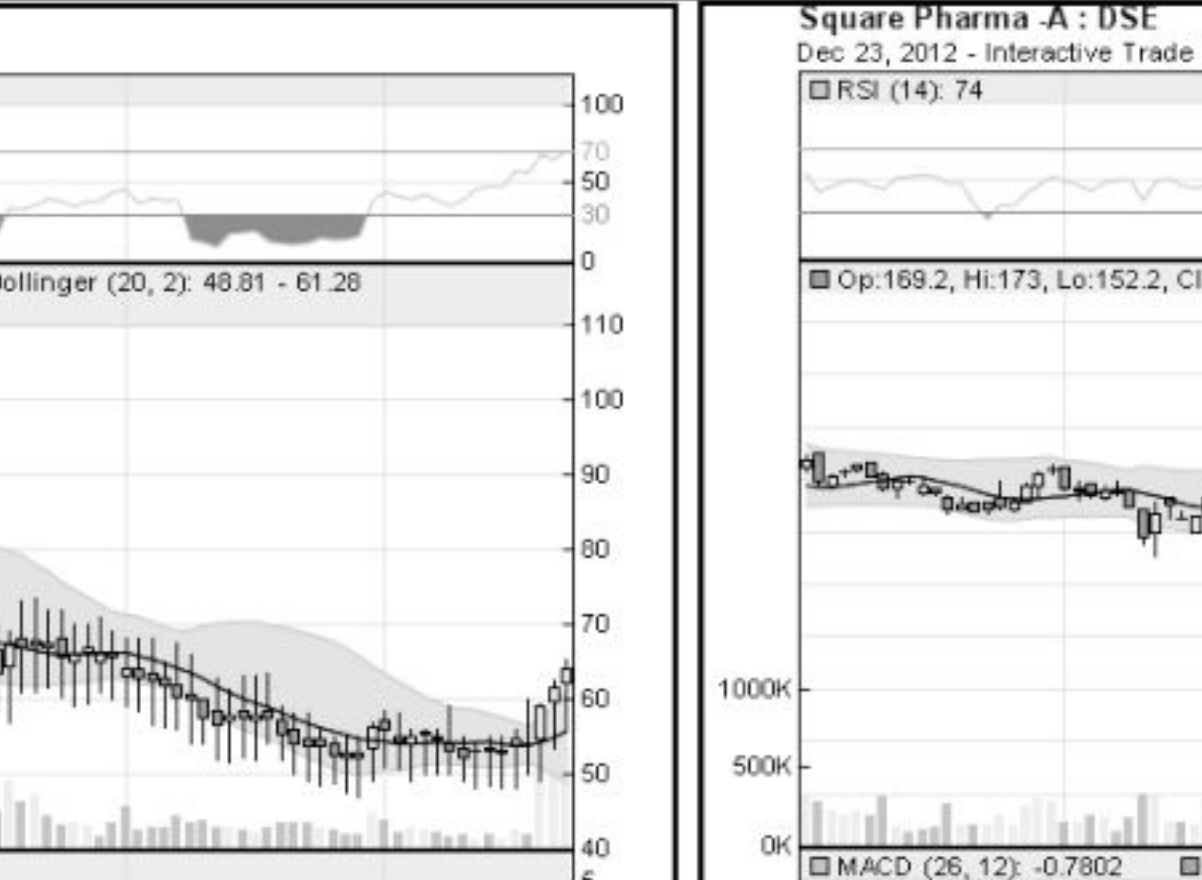
RSI (Relative Strength Index): A technical momentum indicator that compares the size of recent gains to recent losses, in an attempt to determine overbought and oversold conditions of an asset. Stocks with more or strong gains have a higher RSI than stocks that had more or stronger losses.

SMA (Simple Moving Average): A simple, or arithmetic, moving average is the average stock price over a certain period of time. It adds up the closing price of the security for a given period and then divides the total by the number of intervals. Short-term averages respond quickly to changes in the price of the stock, so appear less steady, while long-term averages are slow to react.

EMA (Exponential Moving Average): A type of moving average that is similar to a simple moving average, except that more weight is given to the latest data. The exponential moving average is also known as "exponentially weighted moving average".

Bollinger Band: A band that provides a relative definition of high and low, it was developed by famous technical trader John Bollinger. By definition, prices are high at the upper band and low at the lower band. The band usually plots two standard deviations away from a simple moving average. Because the standard deviation is a measure of volatility, the bands adjust themselves to market conditions. When the markets become volatile, the bands widen (move further away from the average); during less volatile periods, the bands contract. The closer the prices move to the upper band, the more overbought the market, and the closer the prices move to the lower band, the more oversold the market.

MACD (Moving Average Convergence Divergence): A trend-following momentum indicator that shows the relationship between two moving averages of prices. It is used to spot changes in the strength, direction, momentum, and duration of a trend in a stock's price. **Divergence:** This happens when a security's price diverges from the MACD. It signals the end of the current trend.



Notes: Capital Gainer / Loser tables are prepared on the basis of the close price change of the traded issues. "Close" or "C Price" or "W Clo." is the Closing Price of the Week. "Chn %" indicates the price difference in percentage. "Avg" prices indicate weighted average prices of all transactions of the last day of the week. "W Hi" and "W Lo" indicate the highest and lowest transacted price of the week. "Yr Hi" and "Yr Lo" indicate the highest and lowest transacted price last one running year. The everyday the range moves by one day. "PW"=Previous Week. EPS is based on available latest audited accounts of the companies. EPS & Book value per share are diluted at bookclosing date whenever it is applicable. Only the positive earning companies are considered in calculating the PER and EPS of the Sectors and Stock Exchanges.