

Capital Market Highlights:

December 02 2012

INDEX

DSE
All Share: 3515.84666 (-1.24%)
DSE General: 4157.50028 (-1.26%)
DSE 20: 3391.99647 (-0.71%)

CSE
All Share: 12679.1889 (-1.08%)
CSE CSCX: 8079.0349 (-1.08%)
CSE 30: 10812.9958 (-1.25%)

Turnover
DSE: 7.10% Tk3125.54m
CSE: 1.68% Tk434.98m
TOTAL: 6.47% Tk3560.51m

Market Cap.
DSE: 1.19% Tk1783.65b
CSE: 1.08% Tk1734.79b

Capital Gainers

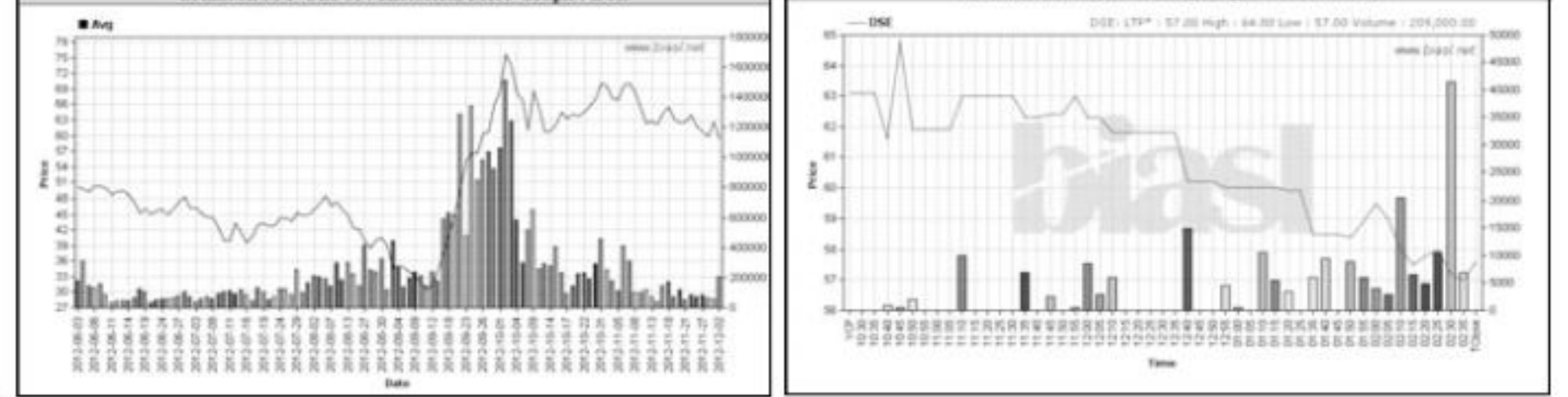
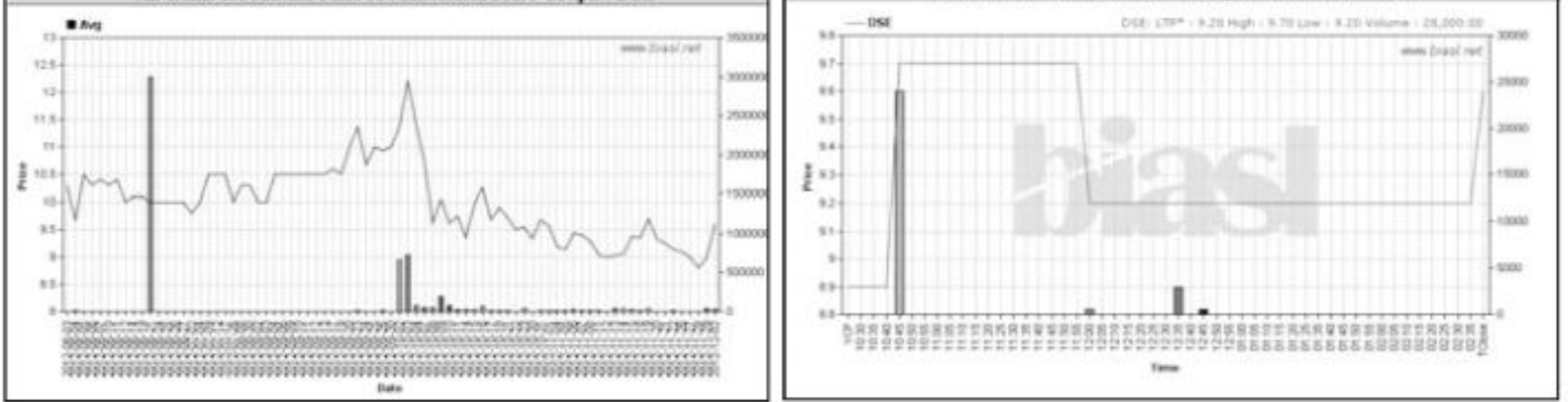
Dhaka Stock Exchange

Company	Price Chn. (%)		Price Scale				Turnover	BookV	M.Tk	Per S	EPS	PE
	Close	Avg.	Avg.	Close	W Hi	W Lo						
aamra technologies-N	9.34	10.27	42.95	43.30	43.50	41.80	87.0	18.2	79.186	20.44	1.17	36.71
AB Bank 1st Mutual Fund-A	7.87	6.90	9.61	9.60	9.70	9.20	12.5	8.8	0.269	10.63	0.46	20.89
Maksons Spinning-A	7.61	8.08	20.07	19.80	20.20	18.40	39.9	12.6	28.053	20.44	0.5	40.14
Unique Hotel RL - N	5.00	7.59	122.87	121.70	127.20	104.50	164.6	62.6	306.987	51.43	3.56	34.51
Reckitt Benckiser - A	4.44	4.46	792.00	792.00	792.00	899.0	595.0	0.079	51.61	28.37	27.92	47.92
BD Submarine Cable-N	2.34	5.95	142.27	139.70	149.00	131.00	188.0	45.0	142.852	23.7	7.14	19.93
Bata Shoe Ltd. - A	1.96	1.44	598.52	607.20	609.50	585.10	635.0	440.0	8.080	89.11	42.44	14.10
Pubali Bank - A	1.47	2.24	34.16	34.40	35.00	31.00	51.2	26.5	43.221	19.17	2.7	12.65
Samata Leather-Z	1.37	1.24	14.75	14.80	14.90	14.60	19.0	11.7	0.059	12.08	-0.07	-210.71
Bangas - A	1.34	4.43	209.97	204.80	219.00	190.00	365.0	101.4	10.293	11.43	3.06	68.62

Capital Losers

Dhaka Stock Exchange

Company	Price Chn. (%)		Price Scale				Turnover	BookV	M.Tk	Per S	EPS	PE
	Close	Avg.	Avg.	Close	W Hi	W Lo						
Grameen M F One-A	-8.72	-5.29	59.31	57.60	64.80	57.00	84.0	29.0	12.395	33.23	6.26	9.47
Progressive Life-A	-7.29	8.20	134.26	115.80	137.00	114.60	211.0	97.0	3.088	34.32	2.58	52.04
Modern Dyeing -B	-7.04	-3.17	55.00	52.80	56.00	51.20	77.0	36.7	0.011	12.93	1.09	50.46
1st BSRS M F-A	-6.92	-3.43	96.84	94.10	103.00	91.60	137.2	64.0	1.840	161.88	14.43	6.71
Anilma Yam - A	-6.83	-4.07	24.03	23.20	25.10	23.00	36.5	15.6	2.992	11.01	1.19	20.19
GPH Ispat Ltd-N	-6.76	-1.13	53.17	51.00	55.80	49.30	91.5	46.0	24.340	14.51	2.94	18.09
Apex Foods - A	-6.67	-3.34	81.69	79.70	85.80	78.60	101.7	52.6	1.740	96.7	2.71	30.14
ICB AMCL3rd NRB MF-A	-6.49	-1.85	7.43	7.20	7.70	7.20	10.8	4.7	1.808	10.6	0	-
Rahima Food - A	-6.34	-3.38	20.04	19.20	21.20	19.10	40.4	15.4	4.809	4.46	0.62	32.32
Kay & Que (BD) -B	-6.30	-3.41	25.79	25.30	27.00	24.40	64.1	24.4	0.503	10.02	0.51	50.57

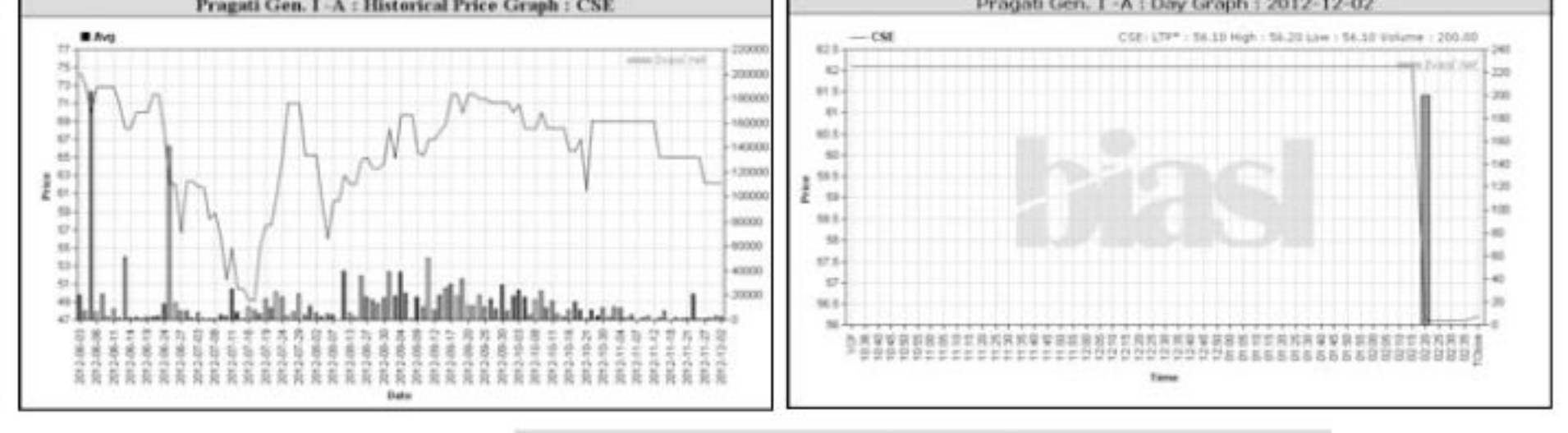
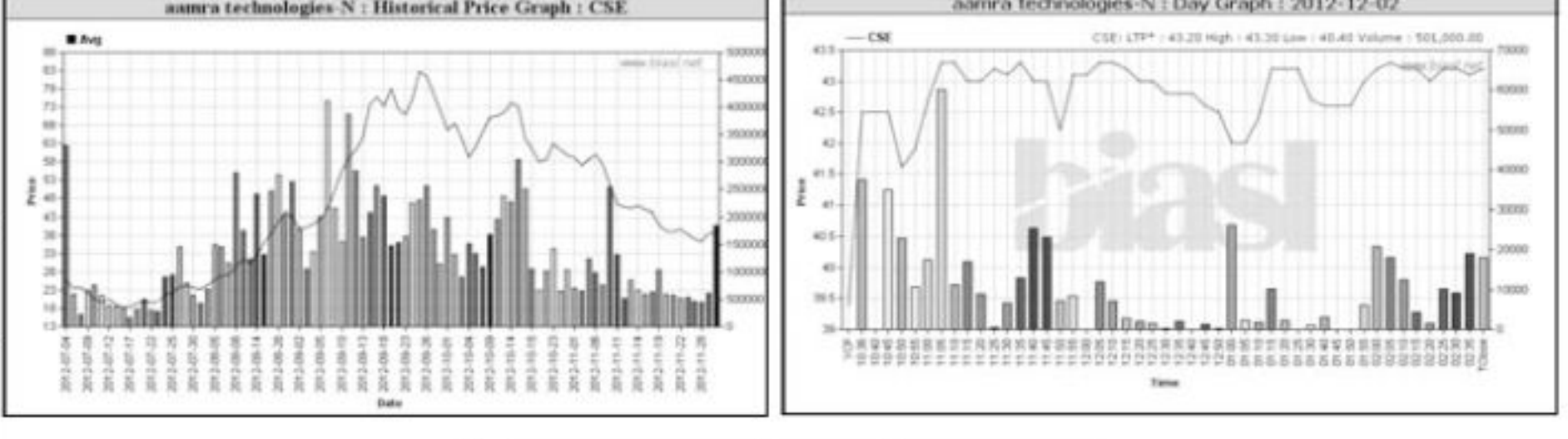


Chittagong Stock Exchange

Company	Price Chn. (%)		Price Scale				Turnover	BookV	M.Tk	Per S	EPS	PE
	Close	Avg.	Avg.	Close	W Hi	W Lo						
aamra technologies-N	9.64	10.75	42.85	43.20	43.30	40.40	86.7	18.0	21.466	20.44	1.17	36.62
Samata Leather-Z	9.63	9.63	14.80	14.80	14.80	14.80	18.4	11.2	0.015	12.08	-0.07	-211.43
Bangas - A	9.39	9.76	203.80	203.80	203.80	203.80	337.1	59.0	0.061	11.43	3.06	66.60
Eastland Insur - A	8.89	8.99	60.00	60.00	60.00	60.00	112.0	54.6	0.012	23.23	5.22	11.49
Prime Islami Life - A	8.69	8.73	103.84	103.80	97.40	104.90	220.2	88.0	0.036	27.1	5.51	18.85
AramitCementA	8.25	8.25	68.20	68.20	69.20	66.20	134.0	63.0	0.102	11.63	3	22.73
Maksons Spinning-A	7.03	8.66	20.07	19.80	20.30	19.70	40.0	13.0	7.284	20.44	0.5	40.14
Power Grid Co. - A	6.24	6.24	57.90	57.90	57.90	57.90	77.5	41.0	0.029	48.08	2.56	22.62
Phoenix Fin. 1st MF-A	6.17	6.54	8.63	8.60	8.70	8.30	11.7	4.6	0.052	11.11	0.51	16.92
S.B. 1st M. F-A	6.17	6.30	8.61	8.60	8.70	8.60	12.1	7.5	0.043	11.86	1.48	5.82

Chittagong Stock Exchange

Company	Price Chn. (%)		Price Scale				Turnover	BookV	M.Tk	Per S	EPS	PE
	Close	Avg.	Avg.	Close	W Hi	W Lo						
Pragati Gen. I - A	-9.50	-9.62	56.15	56.20	56.20	56.10	102.0	45.5	0.011	52.13	2.15	26.12
Eastern InsurA	-8.82	-8.82	33.10	33.10	33.10	33.10	66.0	33.1	0.008	33.32	2.21	14.98
Kohinoor Chem - A	-7.95	-7.95	188.70	188.70	189.20	188.00	310.0	162.0	0.075	10.49	9.52	19.82
Anilma Yam - A	-7.91	-5.10	23.98	23.30	24.60	23.20	36.9	16.0	1.097	11.01	1.19	20.15
Grameen M F One-A	-7.20	-4.16	58.94	58.00	61.00	57.70	84.5	30.0	0.285	33.23	6.26	9.42
SonarBangla Insu. - A	-6.97	-6.97	30.70	30.70	30.70	30.70	44.9	25.0	0.015	12.68	1.57	19.55
GPH Ispat Ltd-N	-6.73	-1.54	53.24	51.30	57.50	51.00	90.5	47.7	2.529	14.51	2.94	18.11
Malek Spinning-A	-6.21	-2.20	29.74	28.70	31.20	28.20	38.5	14.5	2.959	46.87	-1.44	-20.65
Bangladesh Welding - A	-6.18	-2.50	24.98	24.30	25.80	24.30	51.9	19.0	0.050	20.7	0.41	60.93
Deshbandhu Polymer-A	-6.09	-2.09	26.65	26.20	28.10	26.00	49.4	21.0	0.546	12.02	1.16	22.97



Key Features - December 02, 2012

Indicators	DSE	CSE	TOTAL
Turnover (Million Taka)	3,125.54	434.98	3,560.51
Turnover (Volume)	87,232,539	13,318,534	100,551,073
No. of Contract	92,598	17,621	110,219
Traded Issues	270	186	270
Issue Gain (Avg. Price Basis)	126	89	126
Issue Loss (Avg. Price Basis)	139	95	139
Unchanged Issue (Avg. Price Basis)	5	5	5
Market Cap. Equity (Billion Tk.)	1,783.65	1,734.79	1,783.65
Market Cap. Equity (Billion US\$)	21.62	21.03	21.62

Combined Turnover Leaders

Company	Volume (Share)	Value (M. Taka)	%of Total	Average Price
UNITED AIR-A	18517547	428.93	12.05	23.16
Unique Hotel RL - N	2812533	345.38	9.70	122.8
BD Submarine Cable-N	1166130	165.87	4.66	142.24
Jamuna Oil - A	431820	116.06	3.26	268.76
aamra technologies-N	2344500	100.65	2.83	42.93
R. N. Spinning-A	2533490	95.56	2.68	37.72
National Bank - A	4197750	92.63	2.60	22.07
Saiham Cotton-A	2531750	87.62	2.46	34.61
BEXIMCO Ltd. - A	1491865	85.27	2.39	57.16
Titas Gas TDCLA	1181650	77.76	2.18	65.81
UCBL - A	3157493	76.19	2.14	24.13
CMC Kamal Tex. - A	1603764	60.51	1.70	37.73
Saiham Tex.A	1728700	60.22	1.69	34.83
Grameenphone-A	329200	55.99	1.57	170.08
Malek Spinning-A	1619550	48.22	1.35	29.77
Olympic Ind. - A	449800	45.30	1.27	100.71
Pubali Bank - A	1298307	44.35	1.25	34.16
Aftab Auto-A	374012	43.48	1.22	116.24
Tallu Spinning - A	1380225	42.65	1.20	30.9
Meghna Petroleum - A	175005	40.14	1.13	229.35
Keya Cosmetics - A	1215220	37.76	1.06	31.07
EXIM Bank-A	1863984	37.66	1.06	20.21
Maksons Spinning-A	1760346	35.34	0.99	20.07
One Bank - A	1507828	34.08	0.96	22.6
AIMS First - A	618000	33.04	0.93	53.47
M.I. Cement-A	373290	32.99	0.93	88.37
Delta Spinners A	819300	32.80	0.92	40.03
Barakatullah E. D.-A	953975	32.28	0.91	33.84
PrimeFin. 1st MF-A	909500	31.28	0.88	34.39
LankaBangla Fin. - A	495000	29.61	0.83	59.81

Sectoral Turnover Summary

Sector	DSE		CSE		Total	
	Mill. (Tk)	%	Mill. Tk.	%	Mill. Tk.	%
Bank	426.17	13.64	73.51	16.90	499.69	14.03
NBFI	117.09	3.75	17.24	3.96	134.33	3.77
Investment	182.50	5.84	16.99	3.91	199.48	5.60
Engineering	180.56	5.78	23.06	5.30	203.62	5.72
Food & Allied	48.18	1.54	1.53	0.35	49.71	1.40
Fuel & Power	326.63	10.45	29.70	6.83	356.33	10.01
Jute	2.90	0.09	0.00	0.00	2.90	0.08
Textile	492.76	15.77	56.30	12.94	549.06	15.42
Pharma & Chemical	126.98	4.06	13.95	3.21	140.93	3.96
Paper & Packaging	0.06	0.00	0.00	0.00	0.06	0.00
Service	13.21	0.42	1.61	0.37	14.81	0.42
Leather	17.25	0.55	0.37	0.08	17.61	0.49
Ceramic	20.99	0.67	2.53	0.58	23.52	0.66
Cement	53.80	1.72	8.50	1.95	62.30	1.75
Information Technology	106.16	3.40	24.16	5.55	130.32	3.66
General Insurance	48.17	1.54	2.11	0.49	50.29	1.41
Life Insurance	24.51	0.78	0.26	0.06	24.77	0.70
Telecom	193.42	6.19	28.44	6.54	221.86	6.23
Travel & Leisure	663.81	21.24	110.50	25.40	774.31	21.75
Miscellaneous	79.96	2.56	24.16	5.55	104.12	2.92
Debtenture	0.43	0.01	0.06	0.01	0.48	0.01

Sectoral P/E & EPS

Sector	P/E		EPS(%)	
	DSE	CSE	DSE	CSE
Bank	8.32			