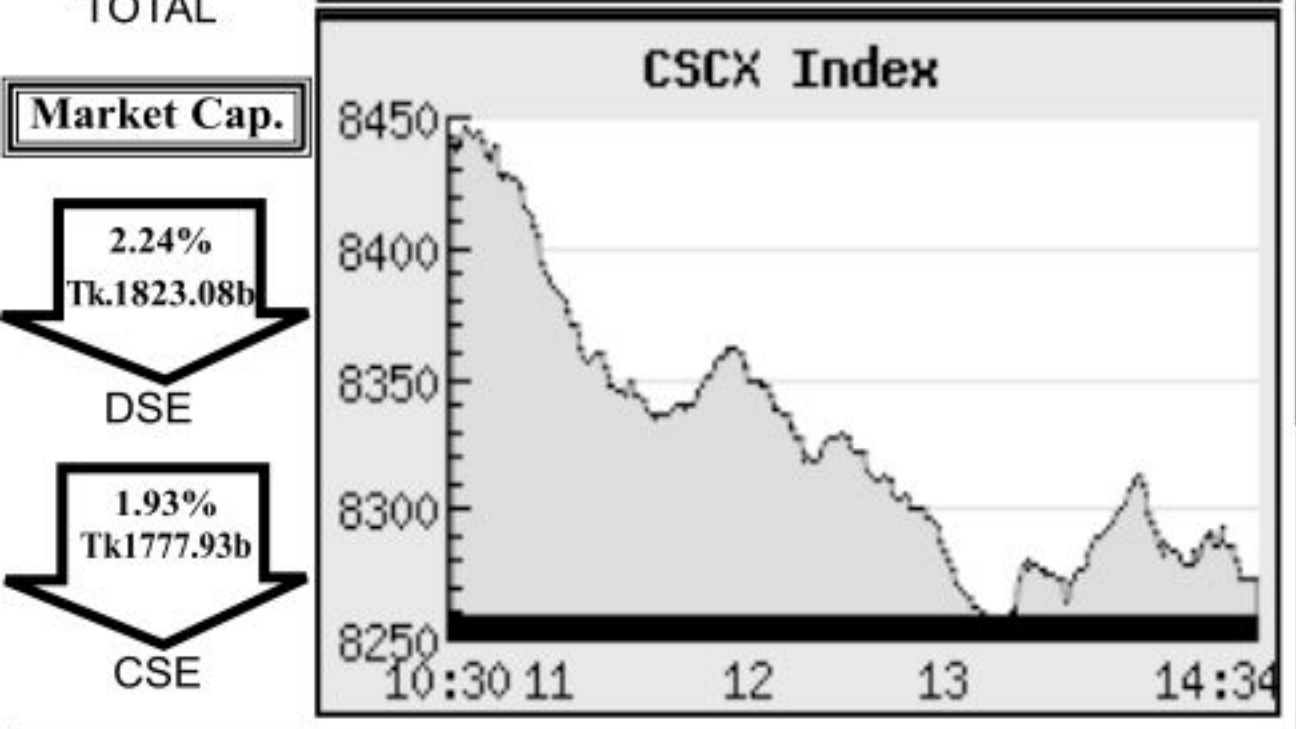
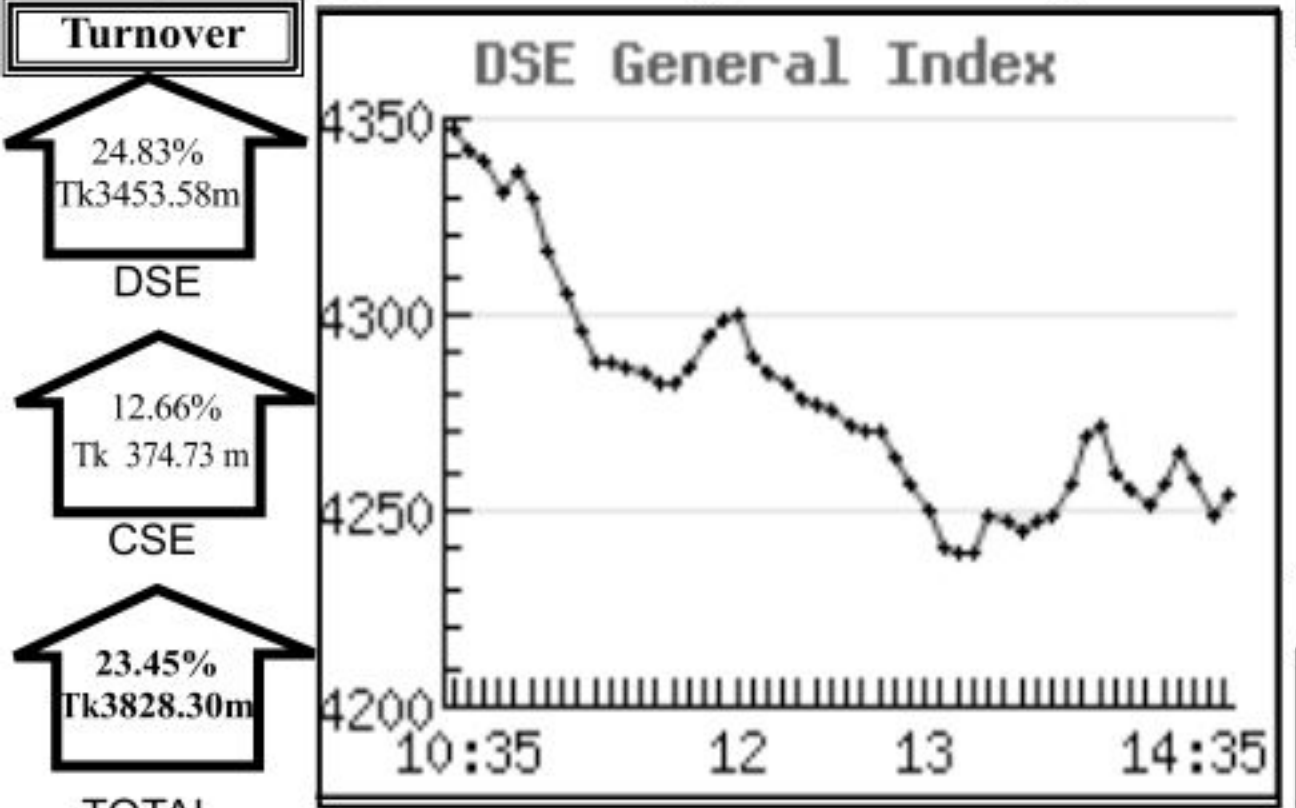


Capital Market Highlights:

INDEX November 11 2012

INDEX	All Share	DSE General	DSE 20
DSE	3595.86853 (-) 2.16%	4253.39975 (-) 2.17%	3430.30745 (-) 1.79%
INDEX	All Share	CSE CSCX	CSE 30
CSE	13006.2014 (-) 1.93%	8283.3763 (-) 1.94%	11067.4376 (-) 1.54%



Key Features - November 11, 2012

Indicators	DSE	CSE	TOTAL
Turnover (Million Taka)	3,453.58	374.73	3,828.32
Turnover (Volume)	90,426,392	10,575,000	101,001,392
No. of Contract	89,495	14,743	104,238
Traded Issues	271	179	271
Issue Gain (Avg. Price Basis)	22	18	22
Issue Loss (Avg. Price Basis)	247	159	247
Unchanged Issue (Avg. Price Basis)	2	2	2
Market Cap. Equity (Billion Tk.)	1,823.08	1,777.93	1,823.08
Market Cap. Equity (Billion US\$)	22.10	21.55	22.10

Combined Turnover Leaders

Company	Volume (Share)	Value (M. Taka)	% of Total	Average Price
UNITED AIR-A	19989102	505.00	13.19	25.26
Jamuna Oil -A	870938	261.24	6.82	299.95
Unique Hotel RL - N	2357610	258.16	6.74	109.5
Meghna Petroleum -A	531047	123.46	3.23	232.49
BD Submarine Cable-N	783300	110.25	2.88	140.75
Titas Gas TDCLA	1303150	107.50	2.81	82.49
R. N. Spinning-A	2604719	96.31	2.52	36.98
BEXIMCO Ltd. -A	1283581	74.71	1.95	58.21
aamra technologies-N	1609250	74.38	1.94	46.22
AIMS First -A	1163325	66.95	1.75	57.55
Malek Spinning-A	1779650	62.52	1.63	35.13
Tallu Spinning-A	1837510	59.53	1.56	32.4
M.I. Cement-A	552280	58.59	1.53	106.09
Grameenphone-A	345000	57.68	1.51	167.17
Saiham Tex.A	1577800	54.51	1.42	34.55
Olympic Ind. -A	287538	46.32	1.21	161.1
Delta Spinners-A	1022200	46.09	1.20	45.08
PrimeFin. 1st MF-A	1336000	44.02	1.15	32.95
CMC Kamal Tex. -A	1363625	43.65	1.14	32.01
Beacon Pharma Ltd.-B	2692250	43.19	1.13	16.04
National Bank -A	1898307	42.28	1.10	22.27
Padma Oil Co. -A	149575	42.18	1.10	281.98
Grameen I:Scheme-2 -A	1663100	40.32	1.05	24.24
Aftab Auto.-A	321411	39.98	1.04	124.38
LafargeS Cement-Z	1195500	39.50	1.03	33.04
UCBL -A	1630465	37.90	0.99	23.25
Pubali Bank -A	1070397	35.98	0.94	33.62
Square Pharma -A	195875	33.63	0.88	171.69
Saiham Cotton-N	1198250	33.39	0.87	27.87
Keya Cosmetics -A	896171	30.50	0.80	34.04

Sectoral Turnover Summary

Sector	DSE		CSE		Total	
	Mill. (Tk.)	%	Mill. Tk.	%	Mill. Tk.	%
Bank	382.54	11.08	47.40	12.65	429.94	11.23
NBFI	91.52	2.65	10.29	2.75	101.81	2.66
Investment	276.29	8.00	17.39	4.64	293.68	7.67
Engineering	178.97	5.18	17.62	4.70	196.59	5.14
Food & Allied	52.43	1.52	3.31	0.88	55.73	1.46
Fuel & Power	609.03	17.63	37.67	10.05	646.70	16.89
Jute	3.38	0.10	0.00	0.00	3.38	0.09
Textile	457.73	13.25	46.52	12.41	504.25	13.17
Pharma & Chemical	147.03	4.26	17.49	4.67	164.53	4.30
Paper & Packaging	0.20	0.01	0.02	0.01	0.22	0.01
Service	18.93	0.55	1.91	0.51	20.84	0.54
Leather	9.50	0.28	0.11	0.03	9.61	0.25
Ceramic	19.01	0.55	1.52	0.40	20.52	0.54
Cement	103.33	2.99	23.15	6.18	126.48	3.30
Information Technology	103.95	3.01	22.90	6.11	126.86	3.31
General Insurance	61.68	1.79	1.69	0.45	63.37	1.66
Life Insurance	25.11	0.73	0.37	0.10	25.48	0.67
Telecom	138.20	4.00	29.73	7.93	167.93	4.39
Travel & Leisure	683.73	19.80	79.44	21.20	763.16	19.93
Miscellaneous	90.71	2.63	16.20	4.32	106.92	2.79
Debtenture	0.30	0.01	0.01	0.00	0.31	0.01

Sectoral P/E & EPS

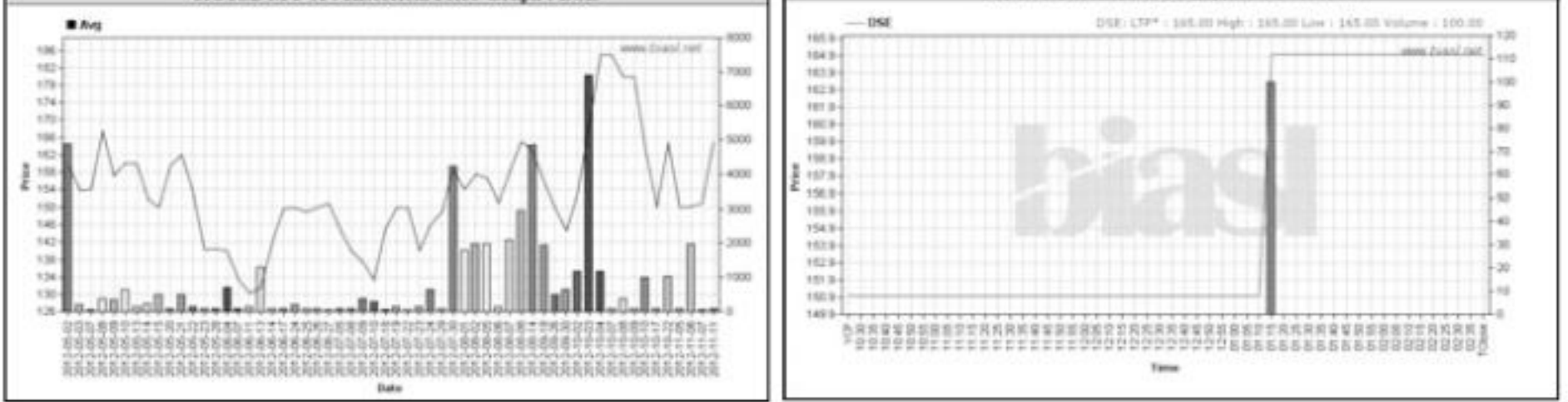
Sector	P/E		EPS(%)	
	DSE	CSE	DSE	CSE
Bank	8.38	8.33	32.47	32.47
NBFI	15.99	8.33	37.58	38.36
Investment	13.97	14.44	9.93	9.93
Engineering	17.03	17.01	43.14	41.39
Food & Allied	21.95	22.50	112.48	114.17
Fuel & Power	13.23	13.27	61.60	61.61
Textile	10.35	9.78	25.98	25.95
Pharma. & Chemical	19.45	18.84	59.00	50.74
Paper & Printing	18.14	18.32	9.55	10.18
Service	20.84	21.07	19.21	19.21
Leather	12.01	12.09	113.01	139.70
Ceramic	20.47	20.38	21.11	21.11
Cement	23.88	23.55	55.52	55.52
IT	22.76	22.79	12.95	12.95
General Insurance	22.83	23.73	20.20	20.31
Life Insurance	16.47	16.95	68.15	68.15
Telecom	12.33	12.25	133.87	133.87
Travel & Leisure	22.09	24.27	23.95	23.19
Miscellaneous	3.70	3.72	148.01	144.48
Stock Exchanges	11.94	11.86	41.70	41.48

Prepared exclusively for Daily Star by Business Information Automation Service Line (BIASL) on the basis of information collected from daily stock quotations and audited reports of the listed companies. High level of caution has been taken to collect and present the above information and data. The publisher will not take any responsibility if any body uses this information and data for his/her investment decision. For any query please email to biasl@bol-online.com or call 01552153562 or go to www.biasl.net

Capital Gainers

Dhaka Stock Exchange

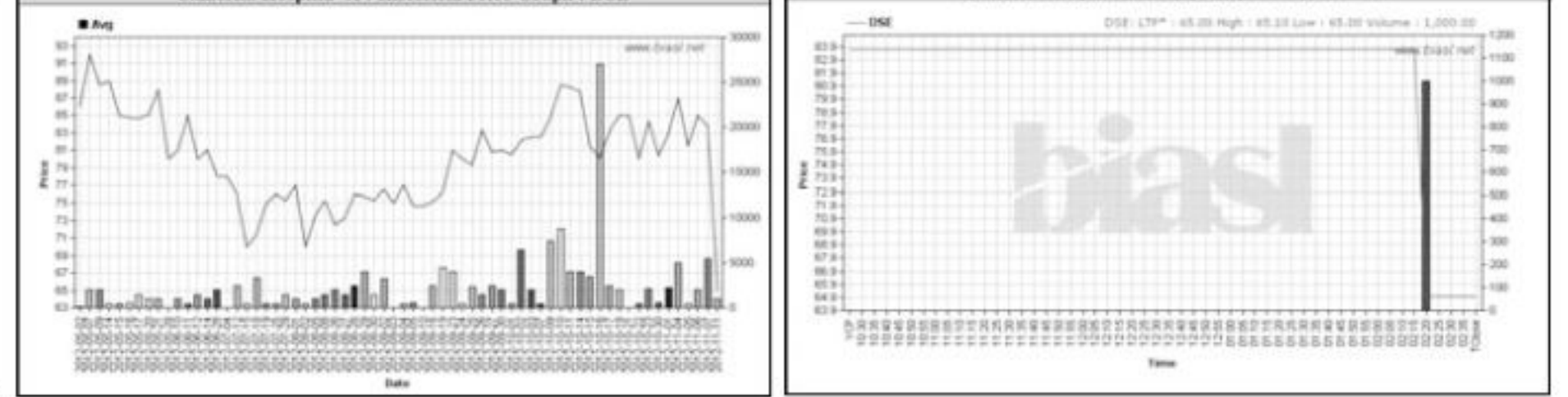
Company	Price Chn. (%)		Price Scale				Turnover		BookV			
	Close	Avg.	Avg.	Close	W Hi	W Lo	Yr Hi	Yr Lo	M.Tk	Per S	EPS	PE
3rd ICB M F-A	9.27	9.27	165.00	165.00	165.00	165.00	255.00	130.2	0.017	58.91	24.83	6.65
BSC-Z	5.21	9.07	298.64	292.75	302.50	282.00	1410.00	211.0	14.169	892.44	18.16	16.44
Pubali Bank -A	4.60	1.57	33.69	34.10	35.20	29.50	55.0	26.5	33.068	19.17	2.7	12.48
NCCBL Mutual Fund-1-A	3.45	2.82	12.04	12.00	12.50	11.60	13.6	10.0	0.307	10.48	0	-
BD Fixed Income MF-A	3.33	-	9.00	9.30	9.70	8.90	14.0	8.5	0.009	10.27	0	-
Social Islami. B-A	2.51	1.46	20.14	20.40	20.80	18.00	28.4	17.0	21.589	14.72	1.81	11.13
Zeal Bangla Sugar -Z	1.14	1.58	9.00	8.90	9.00	8.80	17.0	8.6	0.018	-193.09	-23.01	-0.39
National Tea -A	1.00	1.05	754.00	754.00	769.00	750.00	899.0	475.0	0.754	83.5	8.1	93.09
Meghna Con. Milk -B	0.92	(0.27)	11.09	11.00	11.30	10.80	34.5	10.0	0.366	-16.22	-6.68	-1.66
Savar Refractories-B	0.66	0.68	46.15	45.60	46.00	45.00	91.5	43.0	0.030	12.32	0.23	200.65



Capital Losers

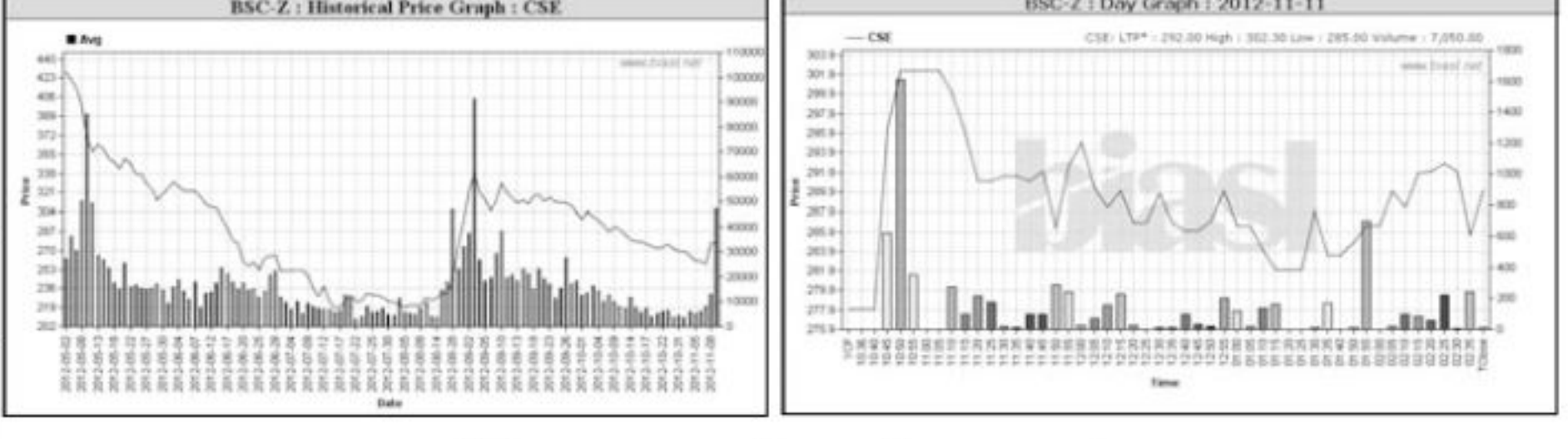
Dhaka Stock Exchange

Company	Price Chn. (%)		Price Scale				Turnover		BookV			
	Close	Avg.	Avg.	Close	W Hi	W Lo	Yr Hi	Yr Lo	M.Tk	Per S	EPS	PE
Samoria Hospital -A	-22.34	-22.45	65.00	65.00	65.10	65.00	114.0	57.3	0.065	17.25	2.31	28.14
Fine Foods A	-17.92	-17.32	19.86	19.70	21.10	19.70	55.3	16.5	1.380	10.58	-0.11	-180.55
Saiham Tex.A	-10.00	-9.44	34.55	34.20	36.70	34.20	68.2	17.0	52.354	29.5	2.75	12.56
aamra technologies-N	-9.88	-9.93	46.19	45.60	49.00	45.60	87.0	18.2	60.533	20.44	1.17	39.48
Tallu Spinning -A	-9.22	-9.09	32.40	31.50	35.00	30.50	94.8	22.9	55.051	13.27	2.82	11.49
6th ICB M F-A	-9.01	-9.04	51.60	51.50	54.90	51.00	68.0	33.9	0.676	26.73	10.58	4.88
Imam Button -Z	-8.85	-8.68	10.42	10.30	10.60	10.30	23.9	9.3	0.125	5.67	-1.68	-6.20
Bangas -A	-8.78	-6.92	287.35	279.60	330.00	238.90	365.0	101.4	12.747	16.58	4.44	64.72
Navana CNG-A	-8.73	-7.68	86.59	84.70	96.00	83.60	120.0	48.6	16.953	27.32	5.08	17.05
CMC Kamal Tex. -A	-7.99	-7.86	32.01	31.10	34.10	30.70	50.0	17.7	43.650	20.63	1.32	24.25



Chittagong Stock Exchange

Company	Price Chn. (%)		Price Scale				Turnover		BookV			
	Close	Avg.	Avg.	Close	W Hi	W Lo	Yr Hi	Yr Lo	M.Tk	Per S	EPS	PE
BSC-Z	4.32	6.17	293.66	290.00	302.30	285.00	898.0	213.0	2.070	892.44	18.16	16.17
Janata Insur -Z	4.08	2.33	321.31	326.80	314.00	314.00	399.0	20.2	0.084	162.81	9.95	32.29
AIBL 1st Is. M. F.-A	4.00	4.00	7.80	7.80	7.80	7.80	10.4	5.0	0.004	9.25	-0.75	-10.40
HeidelbergCement -A	3.05	1.24	265.25	270.00	270.00	260.00	253.4	253.4	1.841	93.15	13.2	20.09
PrimeFin. 1st MF-A	2.78	4.35	33.31	33.30	34.20	32.80	34.2	8.8	0.283	17.61	2.2	15.14
Social Islami. B-A	2.04	0.71	19.81	20.00	19.60	19.40	29.0	17.1	3.112	14.72	1.81	10.94
Rupali Bank -A	1.93	7.95	95.00	95.00	95.00	95.00	148.0	66.5	0.019	92.43	6.62	14.35
IDLC Finance -A	1.52	1.50	100.08	100.10	100.00	100.00	169.2	71.0	0.240	32.17	4.04	24.77
First Lease-A	1.32	1.85	38.50	38.30	38.00	38.00	89.9	36.0	0.096	14.48	1.37	28.10
Asia Pacific Insu. -A	0.82	0.82	37.00	37.00	37.00	37.00	40.5	40.5	0.148	11.98	1.48	25.00



Chittagong Stock Exchange

Company	Price Chn. (%)		Price Scale				Turnover		BookV			
	Close	Avg.	Avg.	Close	W Hi	W Lo	Yr Hi	Yr Lo	M.Tk	Per S	EPS	PE
Fine Foods A	-17.84	-17.33	19.84	19.80	20.00	19.80	53.5	17.0	0.050	10.58	-0.11	-180.36
Tallu Spinning -A	-10.00	-9.72	32.40	31.50	34.80	28.50	71.9	71.9	4.484	13.27	2.82	11.49
Saiham Tex.A	-9.97	-9.25	34.54	34.30	36.30	34.70	67.4	17.2	2.156	29.5	2.75	12.56
aamra technologies-N	-9.86	-10.57	46.36	45.70	49.80	45.70	86.7	18.0	13.850	20.44	1.17	39.62
Grameen M F One-A	-9.80	-6.03	64.81	62.60	66.10	62.60	84.5	30.0	0.421	33.23	6.26	10.35
Eastern Cables-A	-9.32	-9.32	53.50	53.50	53.50	53.50	64.7	64.7	0.005	15.83	2.47	21.66
Saiham Cotton-N	-8.81	-8.29	27.66	26.90	29.10	28.20	48.0	15.4	7.275	22.87	2.88	11.51