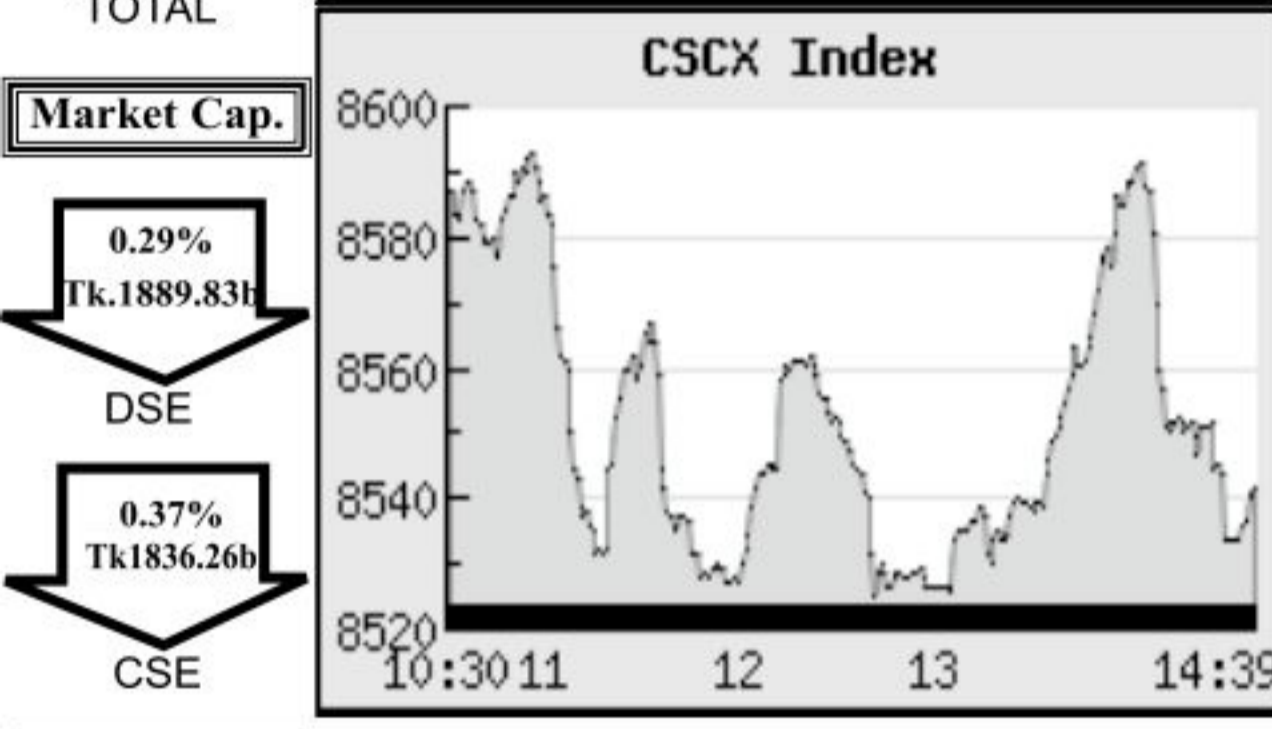
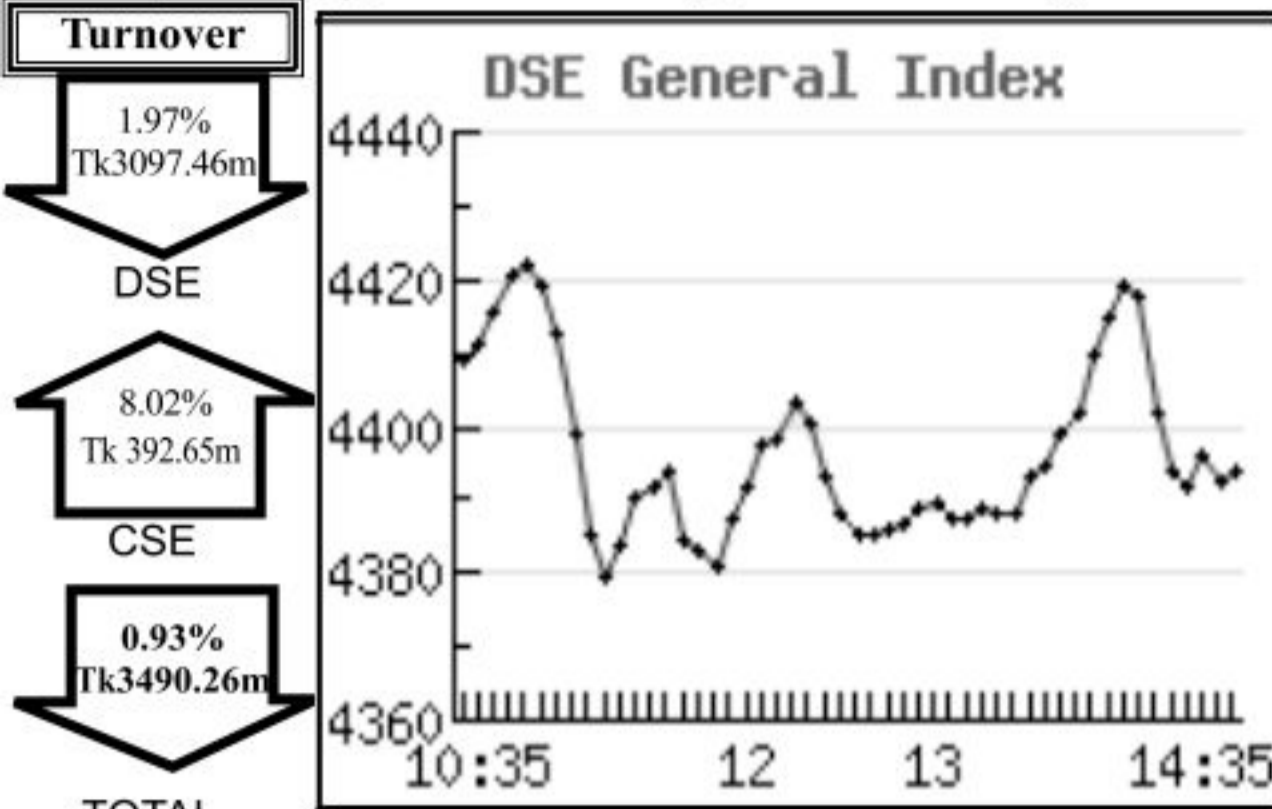


Capital Market Highlights:

Table showing DSE and CSE index highlights for November 05, 2012, including All Share, DSE General, DSE 20, CSE All Share, CSE CSCX, and CSE 30 indices.

Table showing DSE and CSE turnover and market cap highlights for November 05, 2012.



Key Features - November 05, 2012

Table with 4 columns: Indicators, DSE, CSE, and TOTAL, showing various market metrics like Turnover (Million Taka), Market Cap. Equity, etc.

Combined Turnover Leaders

Table listing the top 25 companies by combined turnover across DSE and CSE, including volume, value, and average price.

Sectoral Turnover Summary

Table showing turnover summary by sector for DSE, CSE, and Total, including volume and value in million Tk.

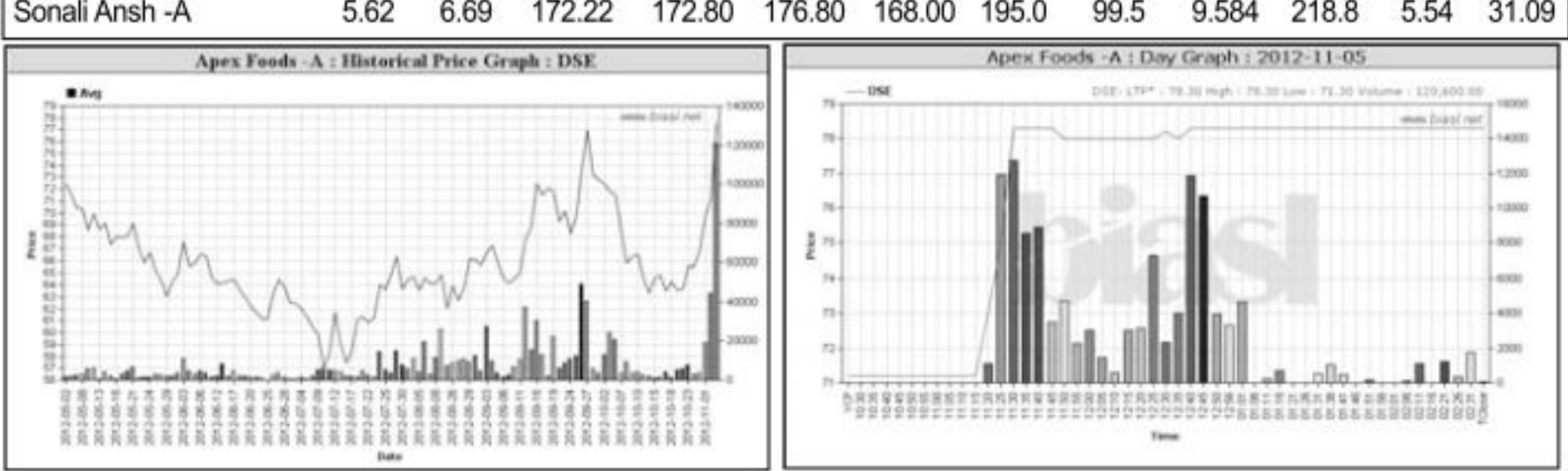
Sectoral P/E & EPS

Table showing P/E and EPS ratios for various sectors, broken down by DSE and CSE.

Prepared exclusively for Daily Star by Business Information Automation Service Line (BIASL) on the basis of information collected from daily stock quotations and audited reports of the listed companies.

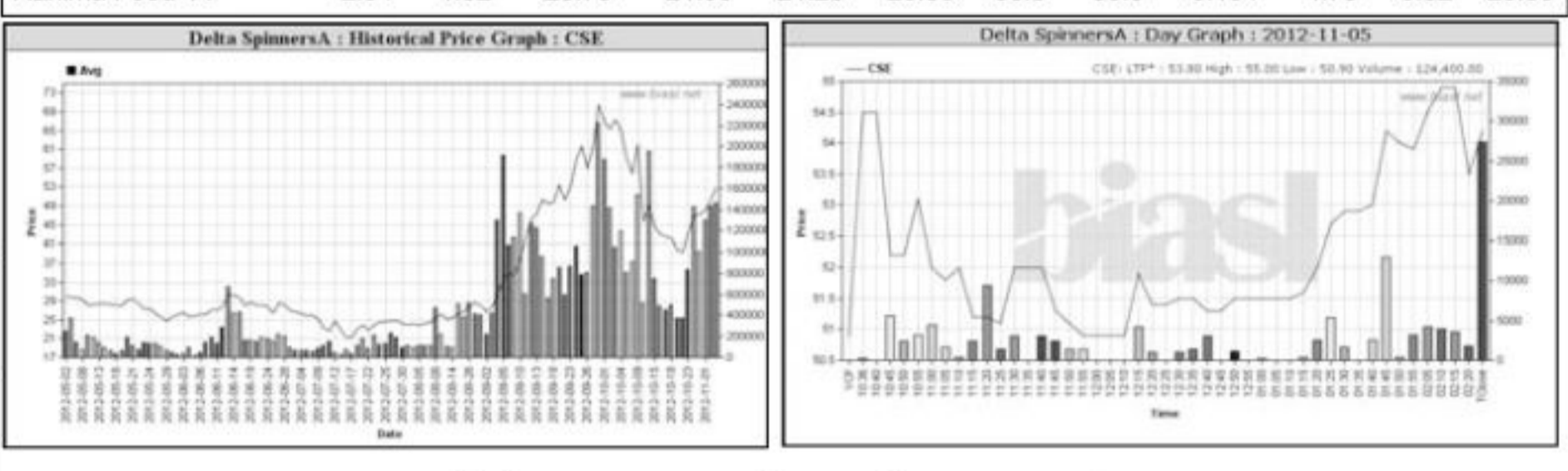
Capital Gainers

Table of top capital gainers at the Dhaka Stock Exchange, listing companies and their price changes.



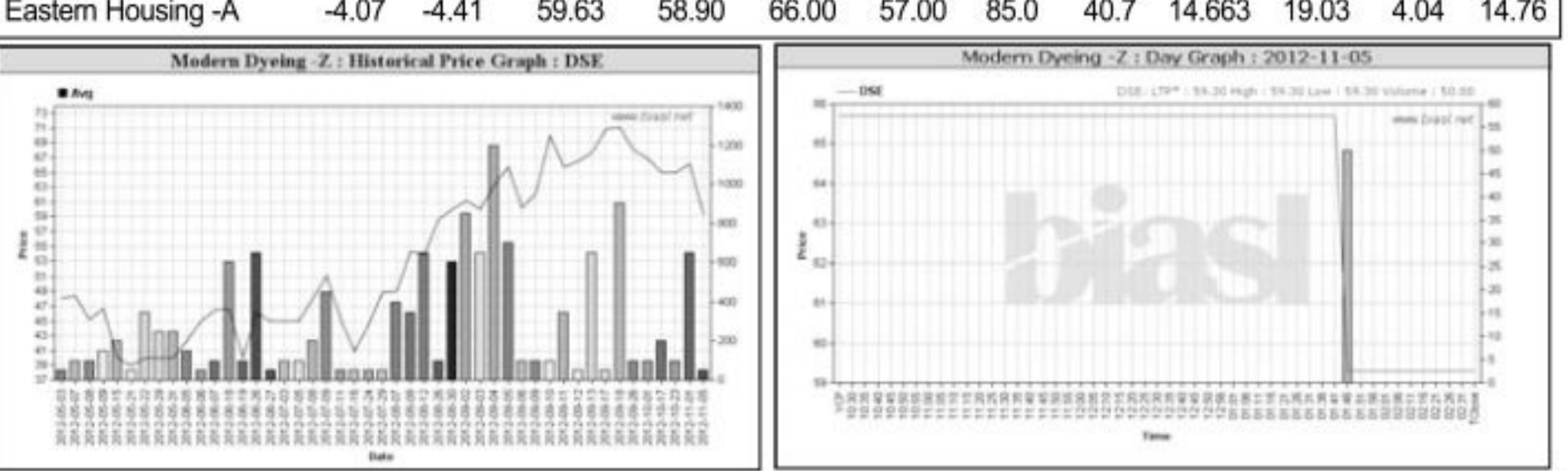
Chittagong Stock Exchange

Table of top capital gainers at the Chittagong Stock Exchange.



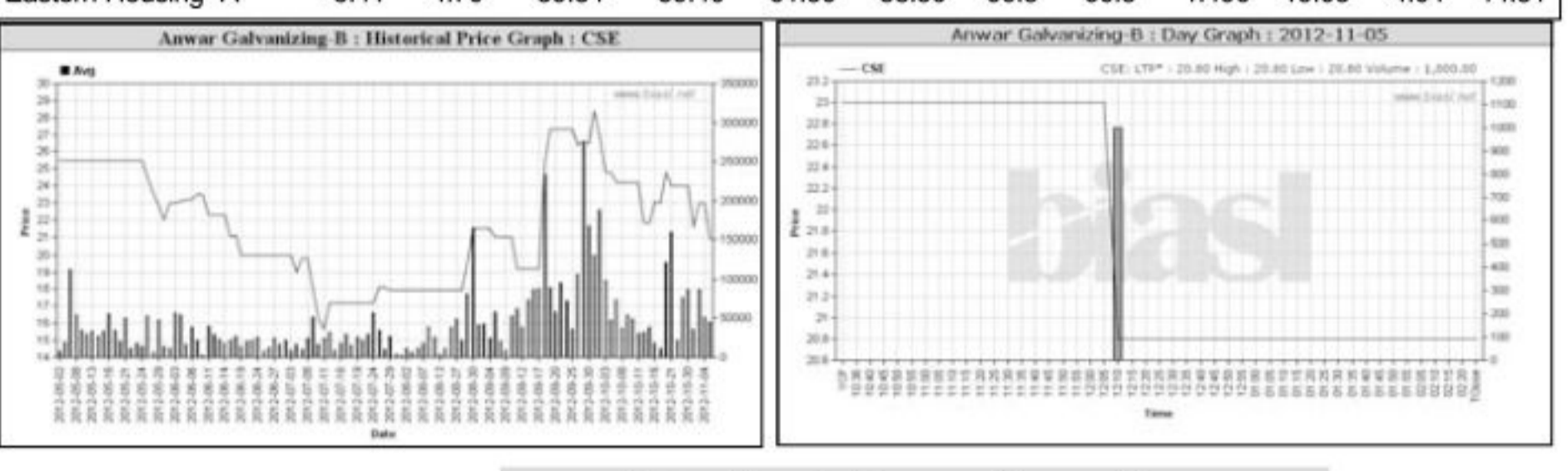
Capital Losers

Table of top capital losers at the Dhaka Stock Exchange.



Chittagong Stock Exchange

Table of top capital losers at the Chittagong Stock Exchange.



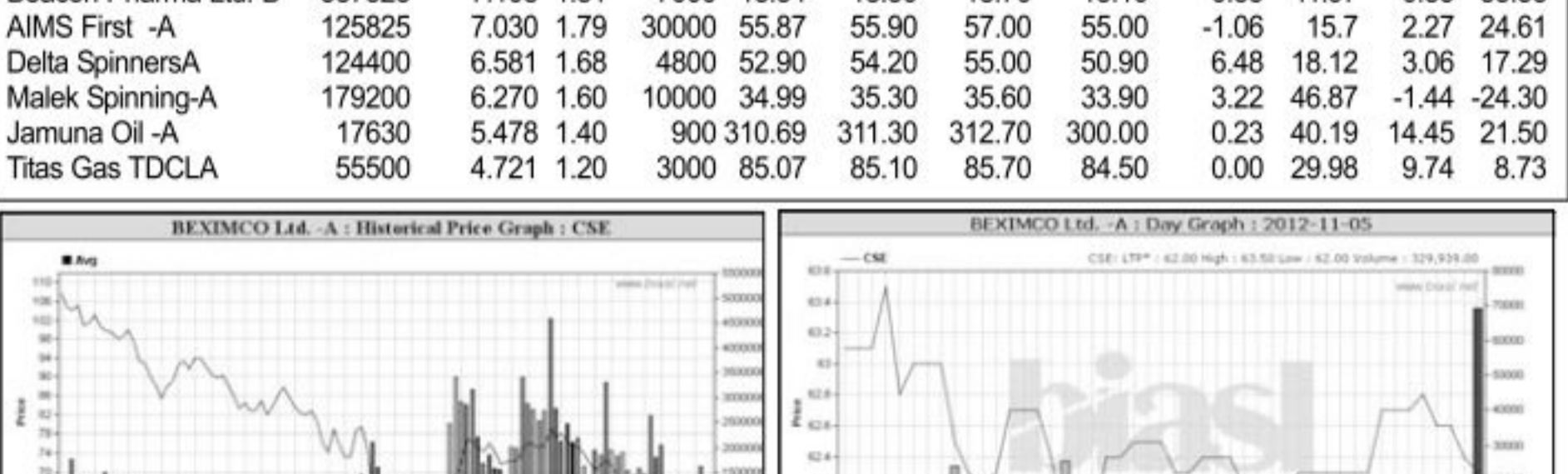
Turnover Leaders

Table of top turnover leaders at the Dhaka Stock Exchange.



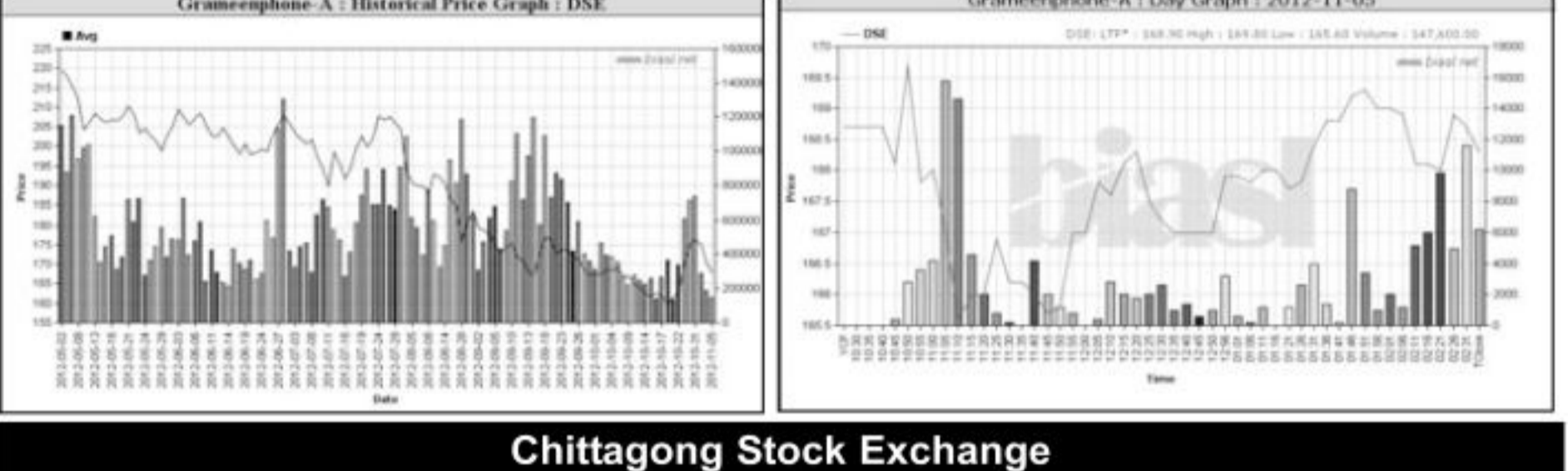
Chittagong Stock Exchange

Table of top turnover leaders at the Chittagong Stock Exchange.



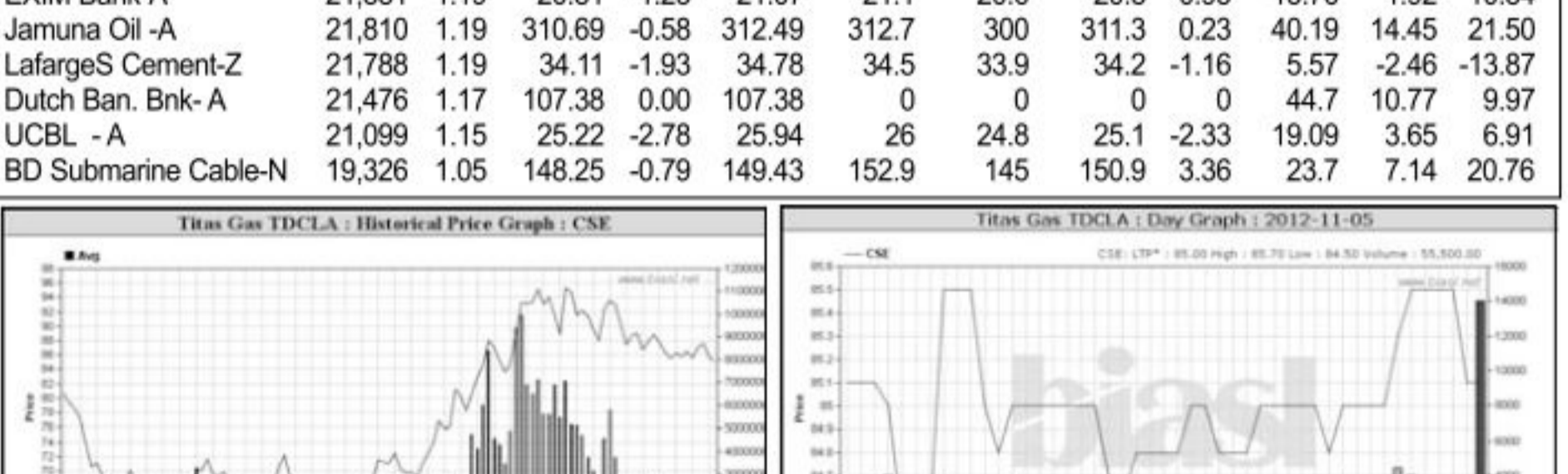
Market Cap. Leader

Table of top market capitalization leaders at the Dhaka Stock Exchange.



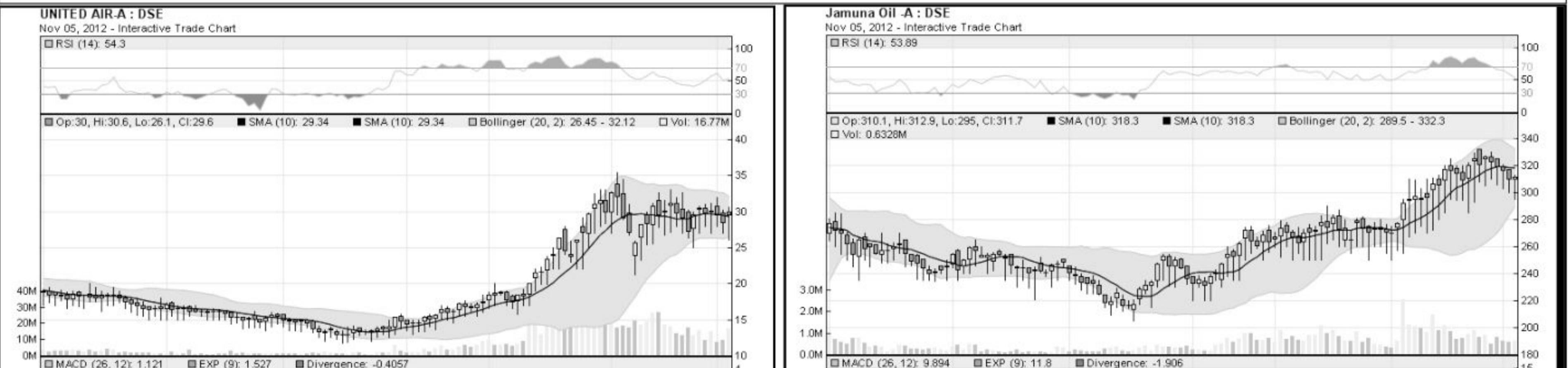
Chittagong Stock Exchange

Table of top market capitalization leaders at the Chittagong Stock Exchange.



What you should know to buy or sell

Investors follow many calculations of corporate performance when deciding if a stock is undervalued or overvalued. These range from the simple price-earnings ratio, or P/E, to far more technical ways of attempting to discern whether a stock is trending up or down.



Notes: Capital Gainer / Loser tables are prepared on the basis of the close price change of the traded issues. "Close" or "C Price" or "W Clo." is the Closing Price of the Week.