

Capital Market Highlights:

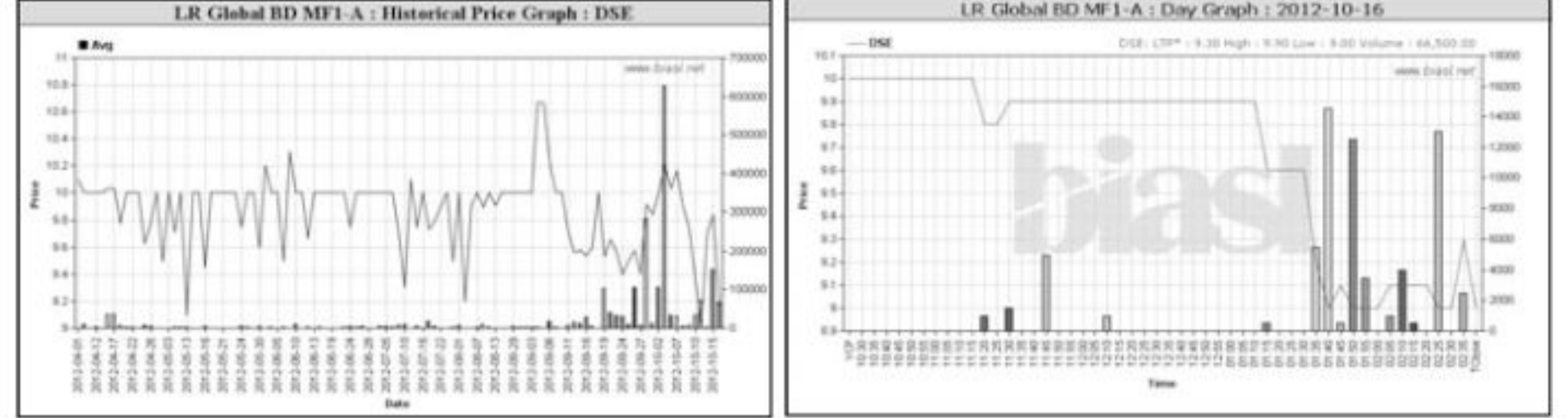
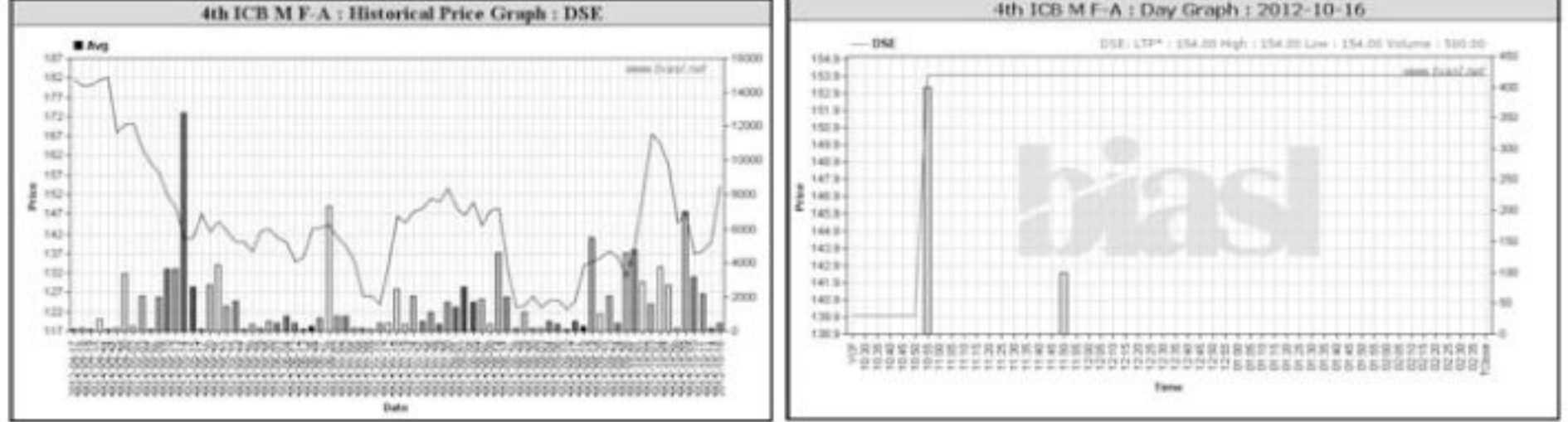
October 16 2012 INDEX DSE All Share 3790.52395 (+0.33%) DSE General 4481.54941 (+0.31%) DSE 20 3449.46927 (+0.81%) CSE All Share 13683.1616 (+0.08%) CSE CSCX 8708.3237 (+0.06%) CSE 30 11691.1692 (+0.49%) Turnover DSE 8.52% Tk4852.86m CSE 18.99% Tk 514.79m CSE 9.64% Tk367.65m Market Cap. DSE 0.18% Tk1932.04b CSE 0.04% Tk1871.09b

Capital Gainers Dhaka Stock Exchange

Table of top capital gainers on Dhaka Stock Exchange. Columns include Company, Price Chn. (%), Price Scale (Close, Avg., W Hi, W Lo, Yr Hi, Yr Lo), Turnover, and BookV.

Capital Losers Dhaka Stock Exchange

Table of top capital losers on Dhaka Stock Exchange. Columns include Company, Price Chn. (%), Price Scale, Turnover, and BookV.

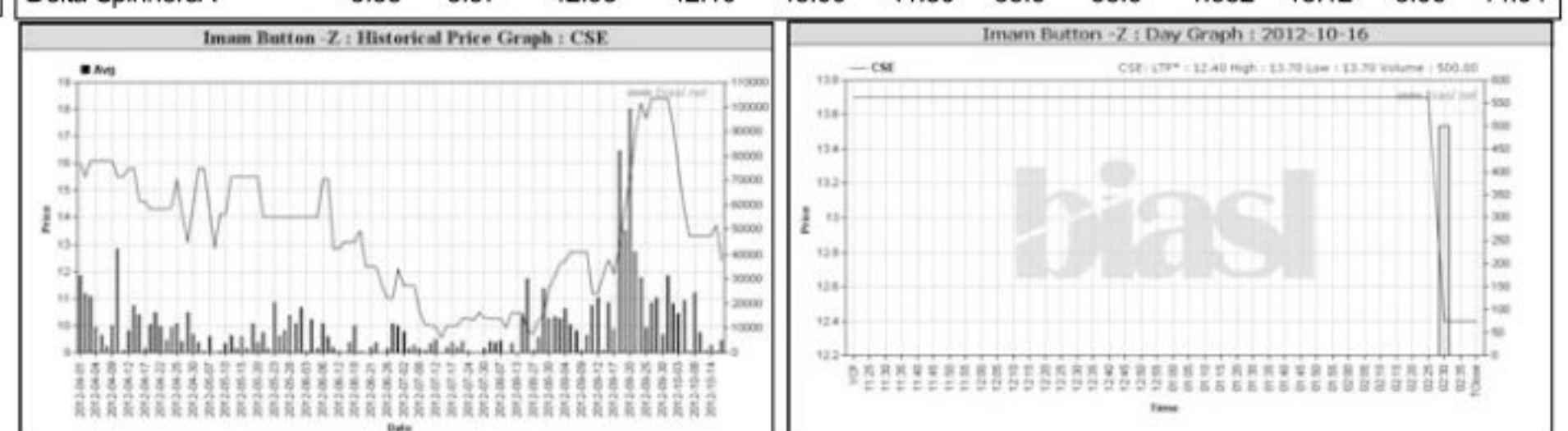
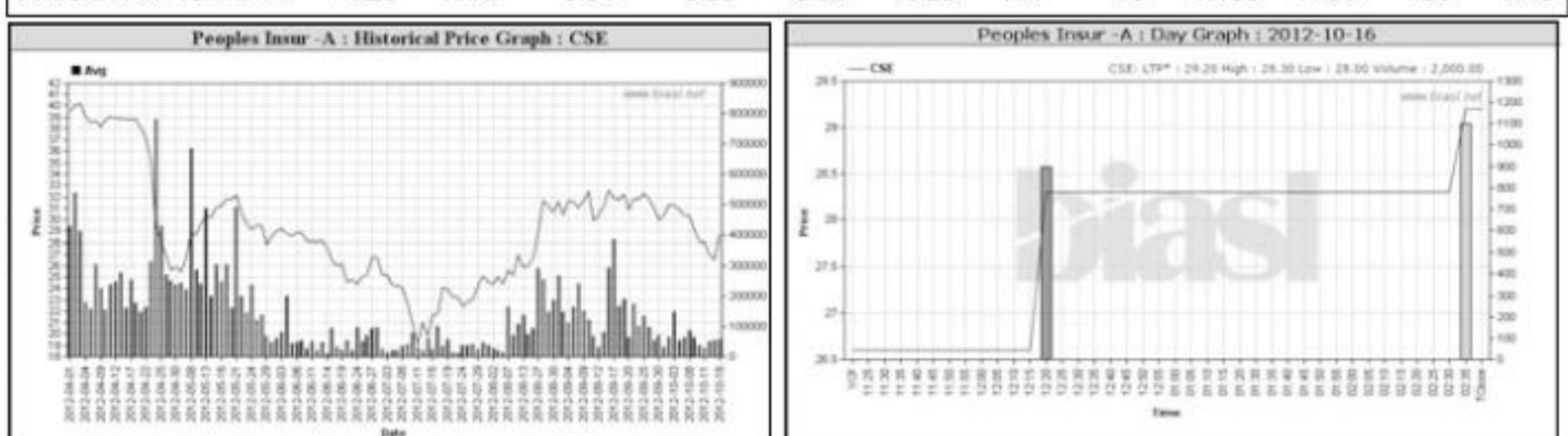


Chittagong Stock Exchange

Table of top capital gainers on Chittagong Stock Exchange. Columns include Company, Price Chn. (%), Price Scale, Turnover, and BookV.

Chittagong Stock Exchange

Table of top capital losers on Chittagong Stock Exchange. Columns include Company, Price Chn. (%), Price Scale, Turnover, and BookV.



Key Features - October 16, 2012

Table of key market indicators: Turnover (Million Taka), Turnover (Volume), No. of Contract, Traded Issues, Issue Gain/Loss, Unchanged Issue, Market Cap. Equity (Billion Tk./US\$).

Combined Turnover Leaders

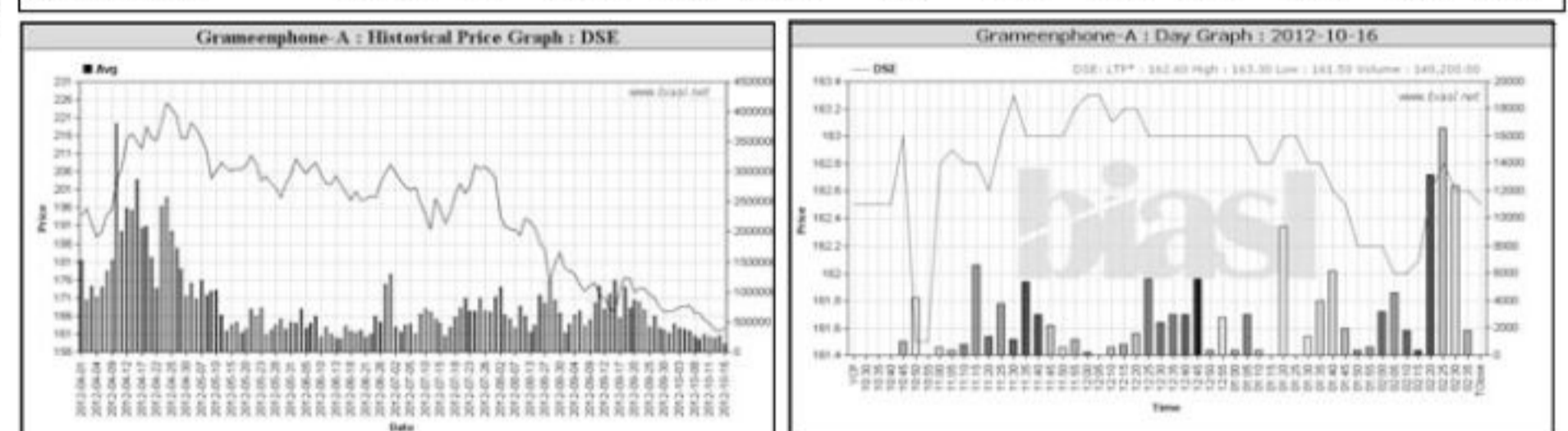
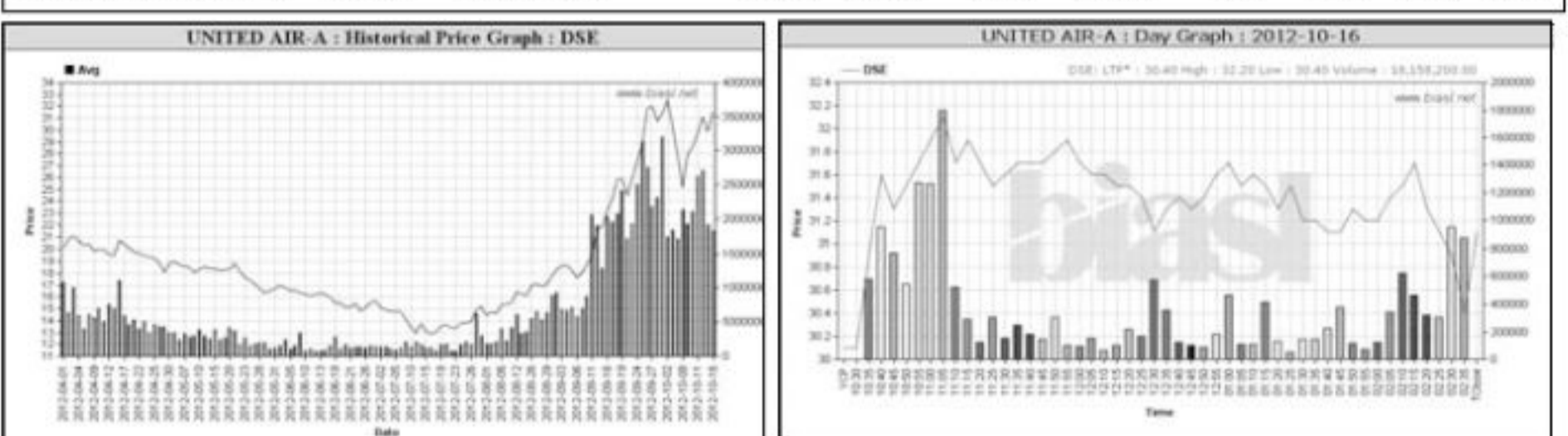
Table of combined turnover leaders. Columns include Company, Volume (Share), Value (M. Taka), % of Total, and Average Price.

Turnover Leaders Dhaka Stock Exchange

Table of turnover leaders on Dhaka Stock Exchange. Columns include Company, Vol. Share, Value (M. Tk.), % of Total, Price Scale, C.Avg, and BookV.

Market Cap. Leader Dhaka Stock Exchange

Table of market capitalization leaders on Dhaka Stock Exchange. Columns include Company, Market Cap. M. Tk., % of Total, Average Price, Price Scale, and BookV.



Chittagong Stock Exchange

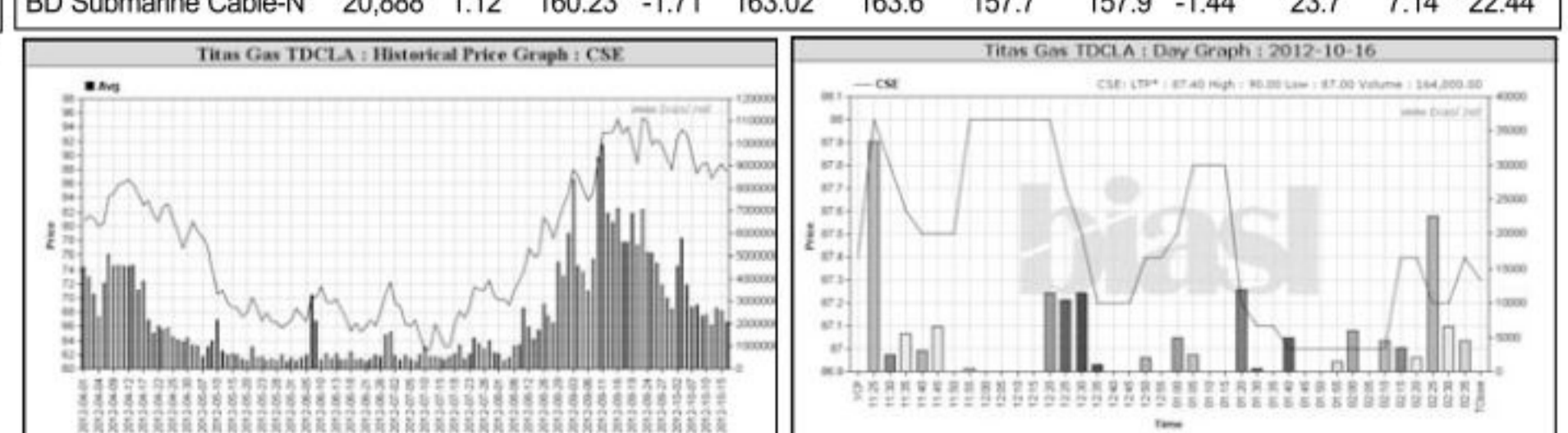
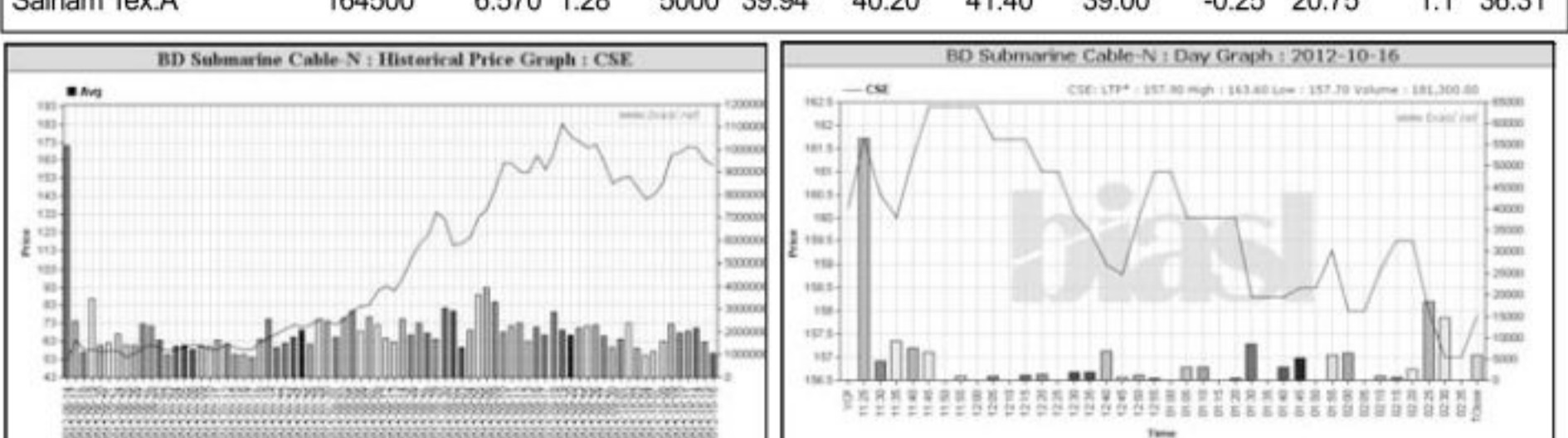
Table of turnover leaders on Chittagong Stock Exchange. Columns include Company, Vol. Share, Value (M. Tk.), % of Total, Price Scale, C.Avg, and BookV.

Chittagong Stock Exchange

Table of market capitalization leaders on Chittagong Stock Exchange. Columns include Company, Market Cap. M. Tk., % of Total, Average Price, Price Scale, and BookV.

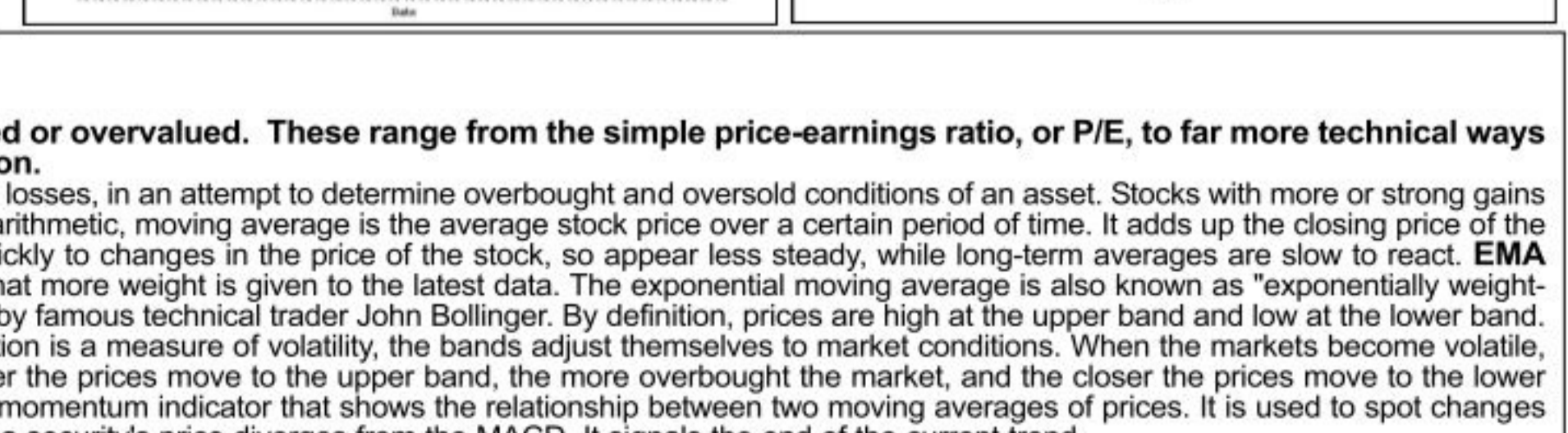
Sectoral Turnover Summary

Table of sectoral turnover summary. Columns include Sector, DSE (Mill. Tk.), CSE (Mill. Tk.), Total (Mill. Tk.), %.



Sectoral P/E & EPS

Table of sectoral P/E and EPS. Columns include Sector, P/E (DSE, CSE), EPS (%).



What you should know to buy or sell. Investors follow many calculations of corporate performance when deciding if a stock is undervalued or overvalued. These range from the simple price-earnings ratio, or P/E, to far more technical ways of attempting to discern whether a stock is trending up or down.

RSI (Relative Strength Index): A technical momentum indicator that compares the size of recent gains to recent losses, in an attempt to determine overbought and oversold conditions of an asset. Stocks with more or strong gains have a higher RSI than stocks that had more or stronger losses.

Prepared exclusively for Daily Star by Business Information Automation Service Line (BIASL), on the basis of information collected from daily stock quotations and audited reports of the listed companies.