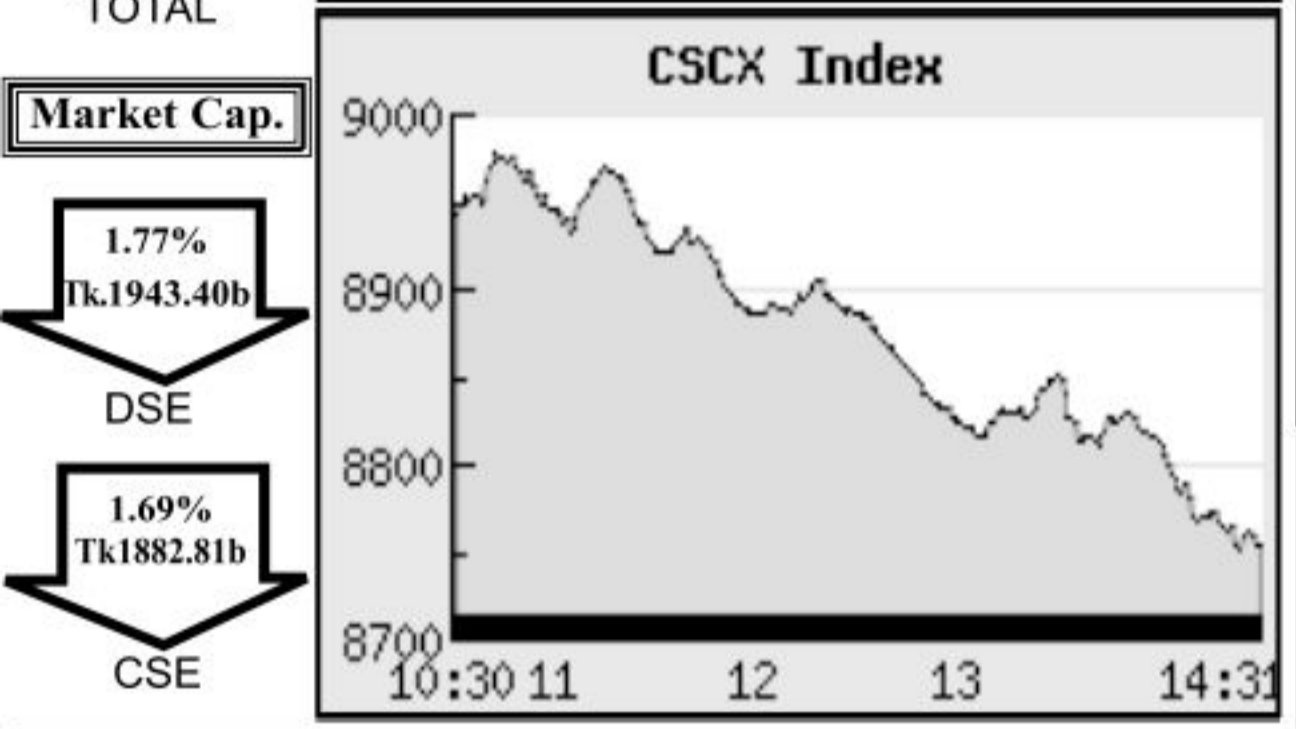
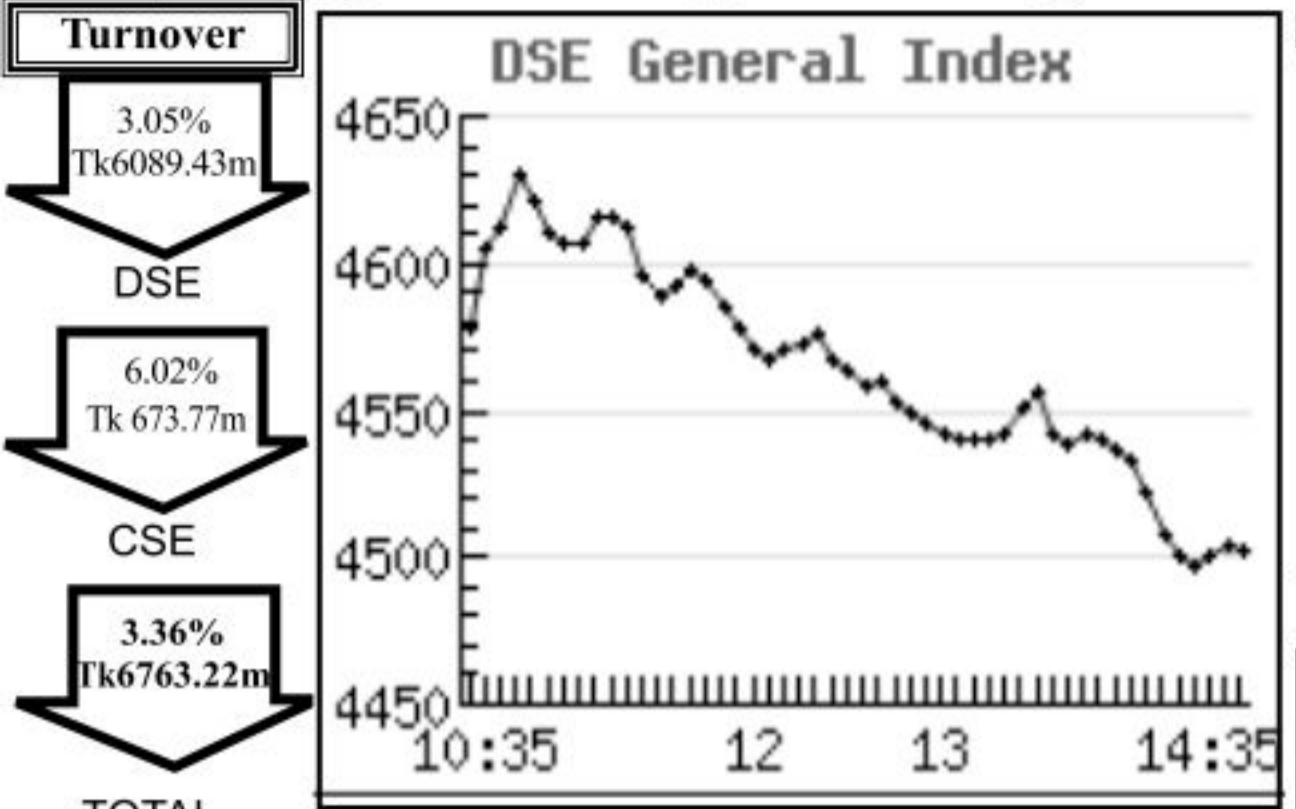


Capital Market Highlights:

October 10 2012

INDEX		
DSE	All Share 3807.88407 (-) 1.65%	DSE General 4502.52267 (-) 1.66%
CSE	All Share 13743.5840 (-) 1.98%	CSE 30 11640.1379 (-) 1.57%

Turnover		
DSE	3.05% Tk6089.43m	CSE
CSE	6.02% Tk 673.77m	TOTAL
TOTAL	3.36% Tk6763.22m	Market Cap.
Market Cap.	1.77% Tk1943.40b	DSE
DSE	1.69% Tk1882.81b	CSE



Key Features - October 10, 2012

Indicators	DSE	CSE	TOTAL
Turnover (Million Taka)	6,089.43	673.77	6,763.20
Turnover (Volume)	130,942,032	16,334,423	147,276,455
No. of Contract	130,172	22,911	153,083
Traded Issues	274	200	274
Issue Gain (Avg. Price Basis)	51	42	51
Issue Loss (Avg. Price Basis)	220	155	220
Unchanged Issue (Avg. Price Basis)	3	3	3
Market Cap. Equity (Billion. Tk.)	1,943.40	1,882.81	1,943.40
Market Cap. Equity (Billion US\$)	23.56	22.82	23.56

Combined Turnover Leaders

Company	Volume (Share)	Value (M. Taka)	% of Total	Average Price
UNITED AIR-A	23060829	658.94	9.74	28.57
Jamuna Oil -A	1913910	587.48	8.69	306.95
BD Submarine Cable-N	2284800	380.59	5.63	166.58
Unique Hotel RL - N	2409200	327.17	4.84	135.80
Olympic Ind. -A	1759495	310.02	4.58	176.2
Meghna Petroleum -A	992039	242.94	3.59	244.89
Titas Gas TDCLA	2608650	231.76	3.43	88.84
R. N. Spinning-A	5358133	217.44	3.22	40.58
UCBL - A	6340573	185.35	2.74	29.23
aamra technologies-N	2516250	177.52	2.62	70.55
BEXIMCO Ltd. -A	1755201	116.05	1.72	66.12
Beacon Pharma Ltd.-B	3761025	106.54	1.58	28.33
Saiham Cotton-N	2555250	100.81	1.49	39.45
CMC Kamal Tex. -A	2200799	93.44	1.38	42.46
Keya Cosmetics -A	1949954	84.21	1.25	43.19
AIMS First -A	1469450	81.83	1.21	55.69
Tallu Spinning -A	1967380	75.70	1.12	38.48
Aftab Auto.-A	559004	73.92	1.09	132.23
Dacca Dyeing-A	1668960	73.29	1.08	43.91
Agni Systems-A	1861515	71.92	1.06	38.64
M.I. Cement-A	585335	68.60	1.01	117.19
Saiham Tex.A	1573110	68.36	1.01	43.46
National Bank -A	2295902	59.43	0.88	25.89
Grameen1:Scheme2 -A	2296900	57.50	0.85	25.03
Maksons Spinning-A	2357246	56.06	0.83	23.78
Lanka Bangla Fin. -A	759600	53.69	0.79	70.68
Grameenphone-A	318015	52.42	0.78	164.84
MJL BD Ltd.-A	640685	50.87	0.75	79.39
Barakatullah E. D.-A	1148642	48.13	0.71	41.9
EXIM Bank-A	2140278	47.17	0.70	22.04

Sectoral Turnover Summary

Sector	DSE		CSE		Total	
	Mill. (Tk.)	%	Mill. Tk.	%	Mill. Tk.	%
Bank	603.52	9.91	97.28	14.44	700.81	10.36
NBFI	198.74	3.26	17.95	2.66	216.70	3.20
Investment	347.94	5.71	32.67	4.85	380.61	5.63
Engineering	557.90	9.16	44.64	6.63	602.54	8.91
Food & Allied	72.06	1.18	5.66	0.84	77.72	1.15
Fuel & Power	1262.17	20.73	73.42	10.90	1335.59	19.75
Jute	1.08	0.02	0.00	0.00	1.08	0.02
Textile	753.17	12.37	97.33	14.45	850.49	12.58
Pharma & Chemical	275.06	4.52	36.50	5.42	311.56	4.61
Paper & Packaging	0.19	0.00	0.09	0.01	0.28	0.00
Service	25.96	0.43	4.08	0.61	30.05	0.44
Leather	10.12	0.17	0.61	0.09	10.73	0.16
Ceramic	56.12	0.92	3.35	0.50	59.47	0.88
Cement	108.98	1.79	18.77	2.79	127.75	1.89
Information Technology	231.47	3.80	48.53	7.20	280.00	4.14
General Insurance	172.35	2.83	5.87	0.87	178.22	2.64
Life Insurance	40.97	0.67	1.32	0.20	42.29	0.63
Telecom	374.69	6.15	58.32	8.66	433.01	6.40
Travel & Leisure	879.74	14.45	106.37	15.79	986.11	14.58
Miscellaneous	116.79	1.92	20.97	3.11	137.76	2.04
Debtenture	0.44	0.01	0.02	0.00	0.46	0.01

Sectoral P/E & EPS

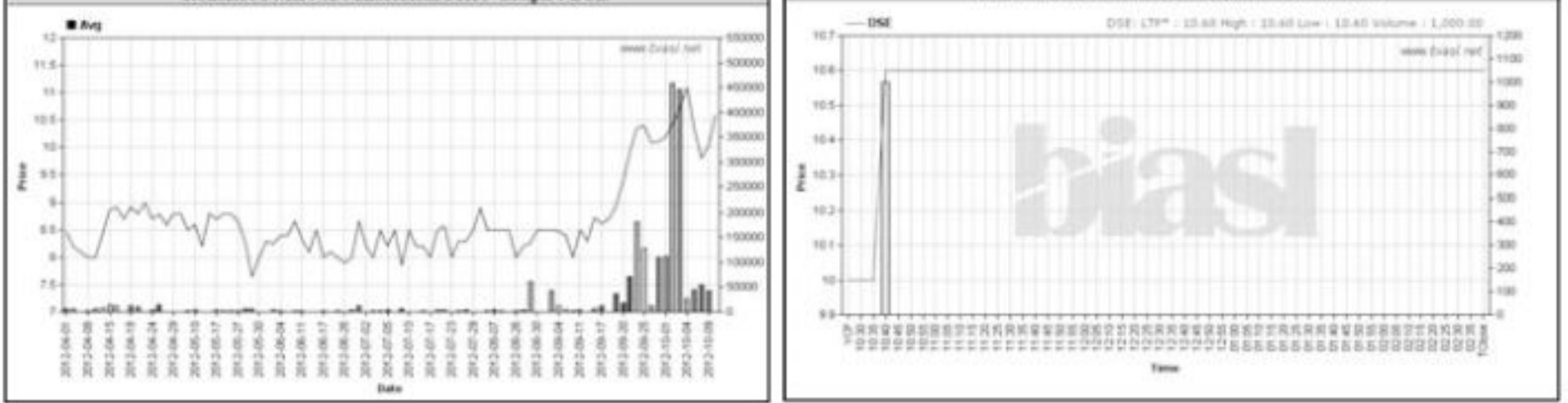
Sector	P/E		EPS(%)	
	DSE	CSE	DSE	CSE
Bank	8.99	8.96	32.47	32.47
NBFI	18.27	18.32	37.58	38.36
Investment	12.28	12.47	11.33	11.33
Engineering	19.18	19.18	42.66	40.80
Food & Allied	20.20	20.29	108.64	110.18
Fuel & Power	13.97	13.99	63.36	63.36
Textile	12.61	12.12	24.06	23.90
Pharma. & Chemical	20.91	20.24	57.28	48.97
Paper & Printing	22.11	22.39	9.55	10.18
Service	21.08	21.06	21.53	21.53
Leather	11.17	11.40	113.01	139.70
Ceramic	24.30	24.26	20.65	20.65
Cement	25.43	25.38	54.73	54.73
IT	29.53	29.71	12.68	12.68
General Insurance	25.62	26.21	20.20	20.31
Life Insurance	17.82	19.01	68.15	68.15
Telecom	12.33	12.31	133.87	133.87
Travel & Leisure	26.65	29.26	23.95	23.19
Miscellaneous	4.10	4.11	147.99	144.44
Stock Exchanges	12.78	12.64	41.45	41.21

Prepared exclusively for Daily Star by Business Information Automation Service Line (BIASL) on the basis of information collected from daily stock quotations and audited reports of the listed companies. High level of caution has been taken to collect and present the above information and data. The publisher will not take any responsibility if any body uses this information and data for his/her investment decision. For any query please email to biasl@bol-online.com or call 01552153562 or go to www.biasl.net

Capital Gainers

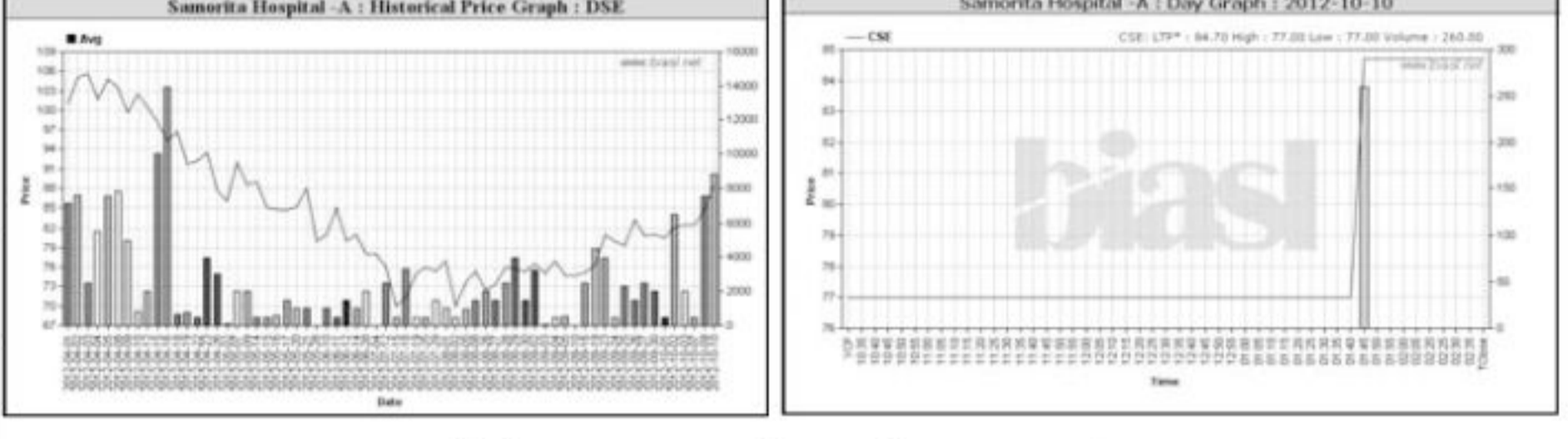
Dhaka Stock Exchange

Company	Price Chn. (%)		Price Scale				Turnover		BookV			
	Close	Avg.	Avg.	Close	W Hi	W Lo	Yr Hi	YrLo	M.Tk	Per S	EPS	PE
Reliance1 M.F.-A	6.00	5.79	10.60	10.60	10.60	10.60	11.6	7.0	0.011	11.36	0.35	30.29
Samorita Hospital -A	4.72	4.36	88.50	88.80	93.00	80.00	114.0	57.3	0.781	20.36	2.72	32.54
Jamuna Oil -A	3.41	2.93	306.97	306.70	310.40	272.00	310.4	146.5	569.482	40.19	14.45	21.24
Olympic Ind. -A	3.25	4.50	176.18	174.80	178.90	160.00	204.5	82.3	296.194	13.56	4.9	35.96
Mario BD Ltd-A	2.91	2.94	403.33	403.20	408.00	378.00	471.0	318.2	0.968	82.64	17	23.73
Anilima Yam -A	1.74	4.32	29.95	29.30	31.00	28.50	43.3	15.6	6.813	10.82	1.17	25.60
ACI Limited-A	1.53	1.37	152.85	152.90	155.50	140.00	270.1	135.0	0.616	170.62	10.09	15.15
Eastern Lubricants -A	1.42	1.66	286.67	286.60	287.00	286.00	433.0	240.0	0.043	57	5	57.33
Quasem Drycells -A	1.32	4.16	54.56	53.70	56.20	52.00	87.0	33.8	15.643	76.6	2.05	26.61
Continental Insur. -A	1.32	0.29	38.36	38.40	41.60	35.00	49.8	23.8	12.153	14.19	1.43	26.83



Chittagong Stock Exchange

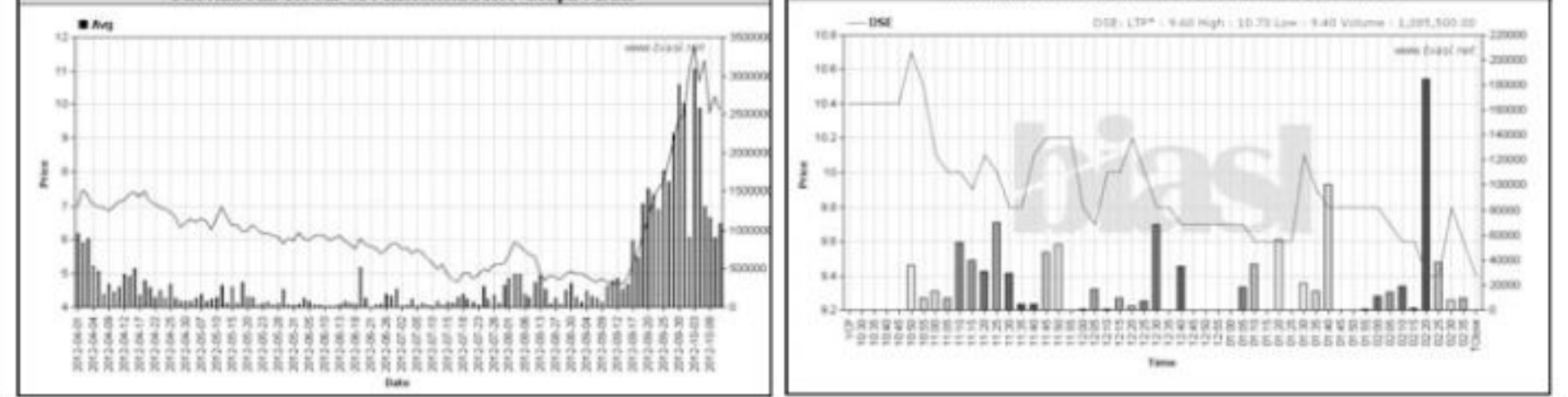
Company	Vol.	Value	% of Total	Price Scale	C.Avg	BookV						
Samorita Hospital -A	10.00	4.31	80.27	84.70	84.70	75.00	114.7	114.7	0.021	20.36	2.72	29.51
NCCBL Mutual Fund-1A	10.00	10.00	11.00	11.00	11.00	11.00	11.00	10.00	0.006	10.48	0	-
Olympic Ind. -A	3.95	4.43	176.48	176.30	180.00	171.00	184.0	184.0	13.823	13.56	4.9	36.02
Jamuna Oil -A	3.42	2.77	306.43	305.10	310.40	290.00	310.4	141.1	18.001	40.19	14.45	21.21
Quasem Drycells -A	3.07	5.21	54.28	53.80	56.80	53.60	86.0	35.2	2.345	76.6	2.05	26.48
Fine Foods A	2.42	1.70	25.18	25.40	25.70	24.40	66.0	17.0	0.053	12.94	1.57	16.04
Orion Infusions -A	2.38	4.02	52.79	51.70	53.00	52.00	52.9	52.9	0.707	9.32	1.61	32.79
Islami Ins.BD-A	2.16	2.05	37.90	37.90	37.90	37.90	40.0	40.0	0.009	12.05	0.89	42.58
Anilima Yam -A	2.11	5.15	29.63	29.00	31.20	28.00	30.0	30.0	0.373	10.82	1.17	25.32
Usmania Glass -A	2.06	2.06	94.00	94.00	94.00	94.00	147.9	78.0	0.009	28.89	0.14	671.43



Capital Losers

Dhaka Stock Exchange

Company	Price Chn. (%)		Price Scale				Turnover		BookV			
	Close	Avg.	Avg.	Close	W Hi	W Lo	Yr Hi	YrLo	M.Tk	Per S	EPS	PE
AMCL 2nd MF-A	-10.00	-4.80	9.33	9.00	10.10	9.00	11.7	5.5	1.875	12.12	1.81	5.15
Phoenix Fin. 1st MF-A	-9.62	-4.00	9.83	9.40	10.70	9.40	12.4	4.6	10.671	11.33	1.33	7.39
3rd ICB M F-A	-9.44	-9.44	163.00	163.00	163.00	163.00	279.5	130.2	0.163	58.91	24.83	6.56
PrimeFin. 1st MF-A	-9.31	-8.22	27.12	26.30	29.50	26.10	30.6	8.8	27.007	26.31	2.83	9.58
S.B. 1st M. F.-A	-9.17	-7.63	10.17	9.90	11.20	9.90	12.2	7.7	8.872	11.86	1.48	6.87
AIMS First -A	-9.12	-3.01	55.65	52.80	60.00	52.30	64.5	24.7	75.615	15.7	2.27	24.52
Grameen1:Scheme2 -A	-9.06	-5.47	25.06	24.10	27.00	23.90	29.8	10.0	51.680	16.41	2.17	11.55
7th ICB M F-A	-8.85	-8.99	73.00	73.10	73.30	73.00	108.0	68.0	0.292	32.05	13.47	5.42
5th ICB M F-A	-8.62	-8.42	119.05	118.80	125.00	117.00	193.8	100.1	0.250	41.95	18.93	6.29
EBL First M F-A	-8.47	-3.44	11.23	10.80	12.50	10.70	14.8	7.9	12.595	12.62	0.99	11.34



Chittagong Stock Exchange

Company	Vol.	Value	% of Total	Price Scale	C.Avg	BookV						
Prime Bank 1st MF-A	-10.00	-5.49	8.43	8.10	8.80	8.10	10.5	4.8	0.265	11.59	1.35	6.24
ICB Emp. PMF-A	-9.92	-6.35	11.35	10.90	12.10	10.90	13.4	5.6	0.176	11.65	1.44	7.88
S.B. 1st M. F.-A	-9.91	-8.29	10.18	10.00	10.60	10.00	12.1	7.0	0.290	11.86	1.48	6.88
PrimeFin. 1st MF-A	-9.90	-9.81	26.66	26.40	27.50	26.40	30.8	8.8	0.213	26.31	2.83	9.42
Grameen1:Scheme2 -A	-9.06	-6.77	24.79	24.10	26.30	24.30	29.8	11.3	5.817	16.41	2.17	11.42
Green Delta M.F.-A	-8.24	-2.86	8.16	7.80	9.30	7.70	10.8	4.5	1.853	9.72	-0.82	-9.95
MBL 1st M.F.-A	-8.24	-6.35	7.96	7.80	8.20	8.20	8.5	6.6	0.036	9.08	-0.92	-6.65
Grameen M F One-A	-8.01	-5.66	64.31	63.20	65.10	64.00	84.5	30.0	0.965	33.23	6.26	10.27