

Capital Market Highlights:

September 30 2012

INDEX

DSE
All Share: 3845.69233 (-) 2.84%
DSE General: 4544.40647 (-) 2.94%
DSE 20: 3501.60322 (-) 2.07%

CSE
All Share: 13803.7751 (-) 3.58%
CSE CSCX: 8785.9751 (-) 3.66%
CSE 30: 11868.7400 (-) 3.44%

Turnover

DSE: 17.41% Tk8720.50m
CSE: 16.70% Tk905.15m
TOTAL: 17.34% Tk8725.65m

Market Cap.

DSE: 2.97% Tk1955.97b
CSE: 3.16% Tk1891.13b

DSE General Index

CSCX Index

Capital Gainers

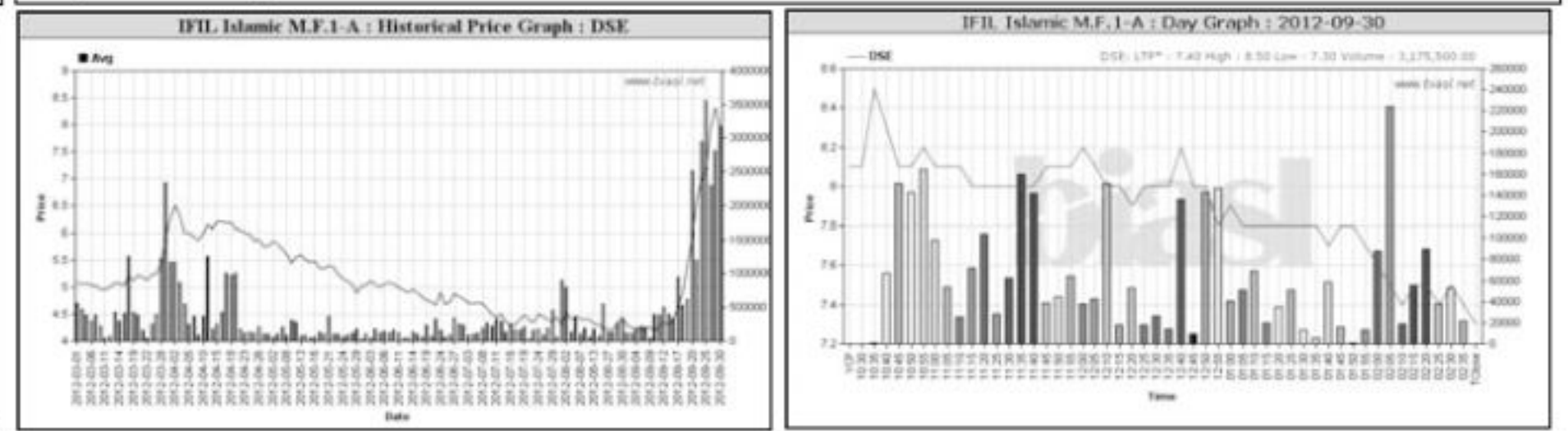
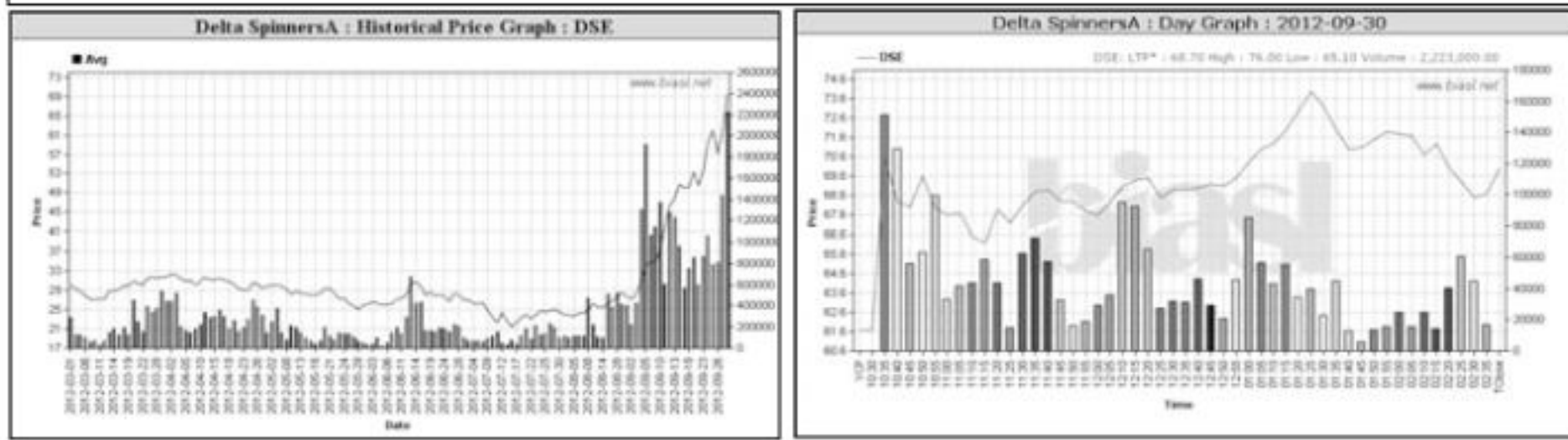
Dhaka Stock Exchange

Company	Price Chn. (%)		Price Scale					Turnover		BookV		
	Close	Avg.	Avg.	Close	W Hi	W Lo	Yr Hi	YrLo	M.Tk	Per S	EPS	PE
Delta SpinnersA	13.45	12.95	69.53	70.00	76.00	65.10	76.00	20.2	154.574	18.12	3.06	22.72
NCCBL Mutual Fund-1A	9.09	9.09	12.00	12.00	12.00	12.00	12.00	10.0	0.006	10.48	0	-
Kohinoor Chem -A	8.62	8.57	228.00	228.10	228.30	228.00	253.3	158.0	0.570	-13.07	7.41	30.77

Capital Losers

Dhaka Stock Exchange

Company	Price Chn. (%)		Price Scale					Turnover		BookV		
	Close	Avg.	Avg.	Close	W Hi	W Lo	Yr Hi	YrLo	M.Tk	Per S	EPS	PE
IFIL Islamic M.F.1-A	-9.88	-4.93	7.91	7.30	8.50	7.30	8.6	4.1	25.128	10.15	0.15	52.73
Sonali Ansh -A	-9.58	-8.96	155.43	151.10	161.80	150.40	212.2	99.5	1.733	218.8	5.54	28.06
Dulamia CottonZ	-9.09	-6.25	14.40	14.00	15.50	14.00	32.4	8.2	0.455	-19.32	-2.01	-7.16

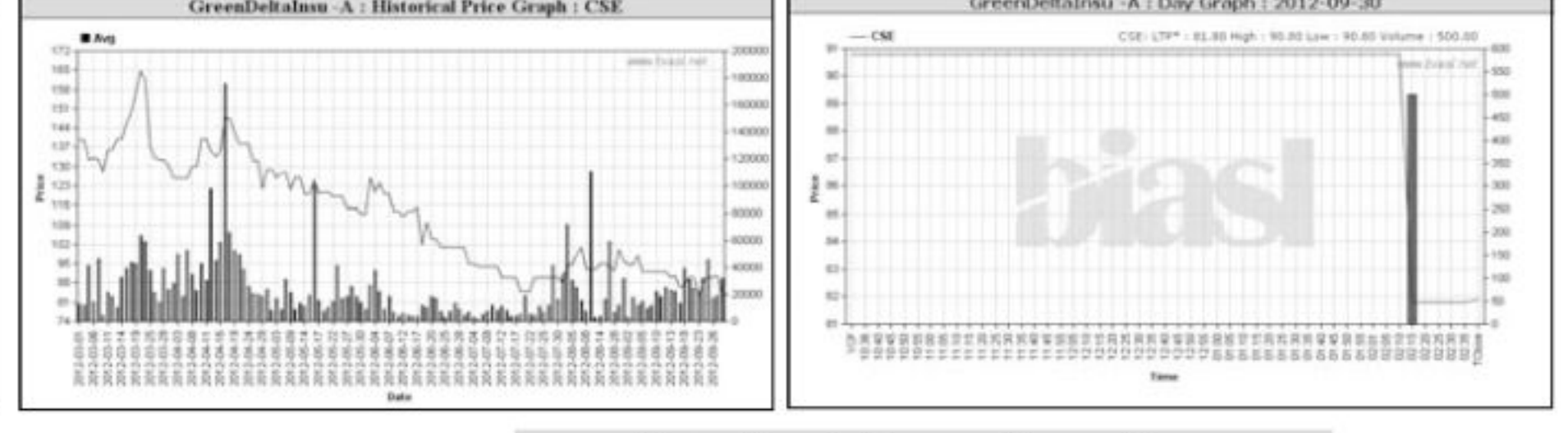
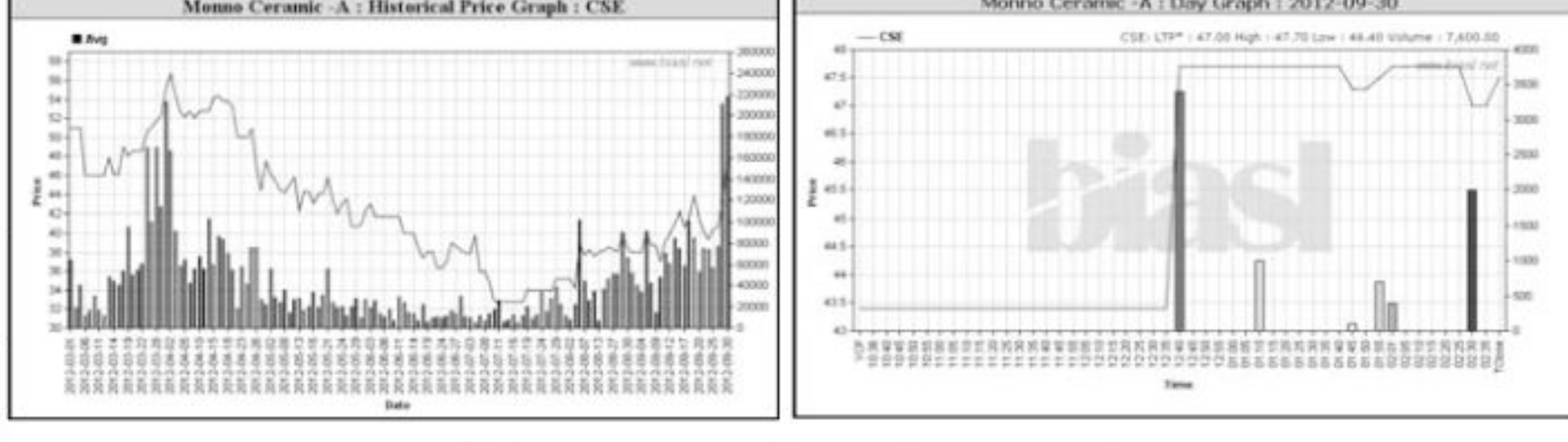


Chittagong Stock Exchange

Company	Price Chn. (%)		Price Scale					Turnover		BookV		
	Close	Avg.	Avg.	Close	W Hi	W Lo	Yr Hi	YrLo	M.Tk	Per S	EPS	PE
Delta SpinnersA	14.89	14.47	70.49	71.00	75.00	67.00	35.6	35.6	15.395	18.12	3.06	23.04
Monno Ceramic -A	9.45	9.95	47.50	47.50	47.70	46.40	73.2	32.0	0.361	18.47	1.49	31.88

Chittagong Stock Exchange

Company	Price Chn. (%)		Price Scale					Turnover		BookV		
	Close	Avg.	Avg.	Close	W Hi	W Lo	Yr Hi	YrLo	M.Tk	Per S	EPS	PE
GreenDeltainsu -A	-9.80	-9.82	81.88	81.90	90.80	90.80	173.0	83.1	0.041	48.7	2.62	31.25
Saiham Cotton-N	-9.98	-7.11	40.21	38.50	42.20	39.20	48.0	15.4	16.056	22.87	2.48	16.21



Key Features - September 30, 2012

Indicators	DSE	CSE	TOTAL
Turnover (Million Taka)	7,820.50	905.15	8,725.65
Turnover (Volume)	216,075,757	25,262,696	241,338,453
No. of Contract	185,749	31,332	217,081
Traded Issues	274	201	274
Issue Gain (Avg. Price Basis)	56	45	56
Issue Loss (Avg. Price Basis)	215	155	215
Unchanged Issue (Avg. Price Basis)	3	1	3
Market Cap. Equity (Billion. Tk.)	1,955.97	1,891.13	1,955.97
Market Cap. Equity (Billion US\$)	23.71	22.92	23.71

Combined Turnover Leaders

Company	Volume (Share)	Value (M. Taka)	% of Total	Average Price
UNITED AIR-A	26199174	806.93	9.25	30.8
R. N. Spinning-A	9367738	411.40	4.71	43.92
Titas Gas TDCLA	3331030	298.81	3.42	89.71
BD Submarine Cable-N	1503200	225.94	2.59	150.30
Aftab Auto.-A	1507181	218.58	2.51	145.02
Keya Cosmetics -A	4468321	213.81	2.45	47.85
UCBL - A	7092364	198.85	2.28	28.04
Delta Spinners A	2441000	169.97	1.95	69.62
Olympic Ind. -A	940100	155.02	1.78	164.91
AIMS First -A	2994500	150.36	1.72	50.21
National Bank - A	5303463	138.32	1.59	26.08
Beacon Pharma Ltd.-B	4822525	135.32	1.55	28.06
Unique Hotel RL - N	1093800	128.03	1.47	117.05
Saiham Cotton-N	3061000	122.89	1.41	40.15
Grameen1:Scheme2 -A	5266400	119.26	1.37	22.64
CMC Kamal Tex. -A	2915371	117.43	1.35	40.28
BEXIMCO Ltd. -A	1579938	113.37	1.30	71.76
Fu-wang Ceramic-A	2762600	107.03	1.23	38.74
BSRM Steels-A	1206600	104.70	1.20	86.77
Barakatullah E. D.-A	1944060	102.75	1.18	52.85
Deshbandhu Polymer-A	2315300	100.36	1.15	43.35
aamra technologies-N	1379000	99.72	1.14	72.32
Jamuna Oil -A	349982	95.55	1.10	27.3
Trust Bank 1st MF-A	9116000	94.45	1.08	10.36
Fu-Wang Food A	2247445	92.74	1.06	41.26
Agni Systems -A	2490757	89.75	1.03	36.03
M.I. Cement-A	734027	89.10	1.02	121.39
EXIM Bank-A	4166800	88.39	1.01	21.21
One Bank -A	3395719	84.66	0.97	24.93
LankaBangla Fin. -A	1118494	82.35	0.94	73.62

Turnover Leaders

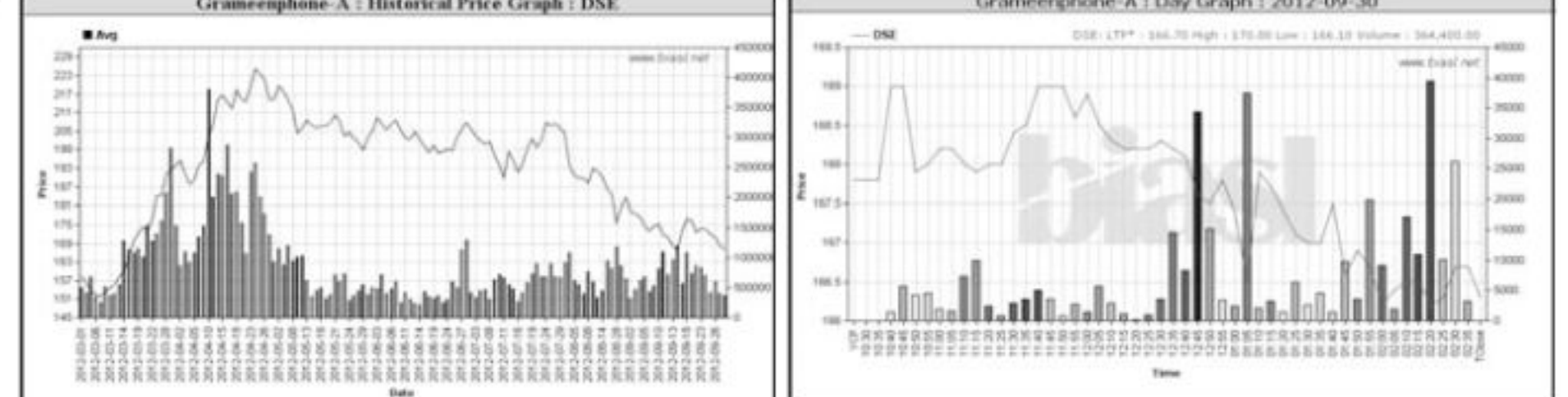
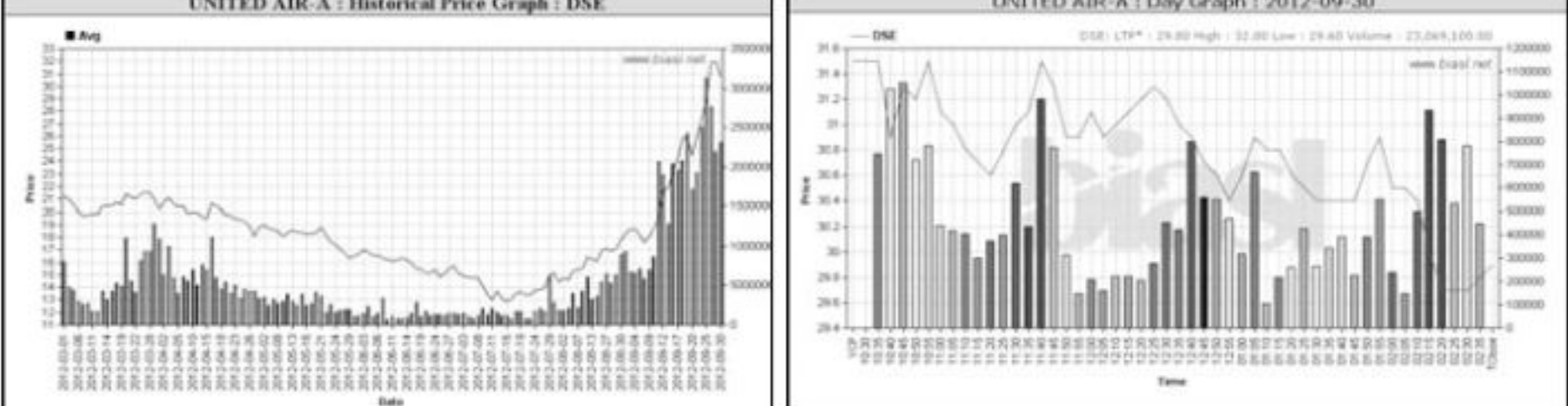
Dhaka Stock Exchange

Company	Vol. Share	Value (M.Tk.)	% of Total	Price Scale					C.Avg		BookV	
				Clo	Chn	PW Clo	W Hi	W Lo	Avg.	Per S	EPS	PE
UNITED AIR-A	23071212	710.525	9.09	-30.80	29.90	33.00	28.40	-5.08	17.39	1.84	16.74	
R. N. Spinning-A	8190313	359.658	4.60	-43.91	42.40	47.00	41.00	-6.40	16.58	2.8	15.68	
Titas Gas TDCLA	3157030	283.228	3.62	-89.71	88.60	91.90	84.00	-1.77	29.98	9.74	9.21	

Market Cap. Leader

Dhaka Stock Exchange

Company	Market Cap. M. Tk.	% of Total	Average		Price Scale			BookV				
			Price	Chn.	P W	W Hi	W Lo	W Clo.	Chn%	Per S	EPS	PE
Grameenphone-A	225,784	11.54	167.21	-0.70	168.39	170	166.1	166.3	-0.89	28.8	13.99	11.95
Titas Gas TDCLA	84,517	4.32	89.71	-1.97	91.51	91	84	88.6	-1.77	29.98	9.74	9.21
ICB -A	74,042	3.79	2,193.85	-1.88	2,235.78	2,230	2,152	2,166.25	-2.79	769.98	137.06	16.01



Chittagong Stock Exchange

Company	Vol. Share	Value (M.Tk.)	% of Total	Price Scale					C.Avg		BookV	
				Clo	Chn	PW Clo	W Hi	W Lo	Avg.	Per S	EPS	PE
UNITED AIR-A	3127962	96.408	10.65	46800	30.82	29.90	32.30	30.20	-5.38	17.39	1.84	16.75
R. N. Spinning-A	1177425	51.740	5.72	26500	43.94	42.50	46.20	42.90	-6.18	16.58	2.8	15.69
UCBL - A	1620852	45.749	5.05	19000	28.23	27.40	29.80	27.80	-7.43	19.09	3.65	7.73



Sectoral Turnover Summary

Sector	DSE		CSE		Total	
	Mill. (Tk.)	%	Mill. Tk.	%	Mill. Tk.	%
Bank	904.23	11.56	170.45	18.83	1074.68	12.32
NBFI	380.36	4.86	42.82	4.73	423.18	4.85
Investment	865.28	11.06	65.06	7.19	930.34	10.66
Engineering	812.52	10.39	74.20	8.20	886.72	10.16
Food & Allied	163.34	2.09	13.84	1.53	177.18	2.03
Fuel & Power	755.40	9.66	54.31	6.00	809.71	9.28
Jute	2.44	0.03	0.00	0.00	2.44	0.03
Textile	1250.91	16.00	143.94	15.90	1394.85	15.99
Pharma & Chemical	547.91	7.01	64.33	7.11	612.24	7.02
Paper & Packaging	0.19	0.00	0.02	0.00	0.22	0.00
Service	93.33	1.19	12.32	1.36	105.65	1.21
Leather	20.56	0.26	0.43	0.05	20.99	0.24
Ceramic	143.18	1.83	11.49	1.27	154.67	1.77
Cement	171.55	2.19	34.02	3.76	205.58	2.36
Information Technology	206.01	2.63	33.85	3.74	239.85	2.75
General Insurance	233.88	2.99	10.91	1.21	244.79	2.81
Life Insurance	60.98	0.78	2.36	0.26	63.33	0.73
Telecom	264.27	3.38	31.61	3.49	295.88	3.39
Travel & Leisure	819.71	10.48	115.25	12.73	934.96	10.72
Miscellaneous	123.12	1.57	23.92	2.64	147.04	1.69
Debtenture	1.31	0.02	0.03	0.00	1.33	0.02

Sectoral P/E & EPS

Sector	P/E		EPS(%)	
	DSE	CSE	DSE	CSE
Bank	8.99	8.99	32.47	32.47
NBFI	18.75	18.63	38.79	39.66
Investment	11.86	11.27	11.33	11.33
Engineering	20.18	20.30	42.66	40.80
Food & Allied	20.06	20.03	108.64	110.18
Fuel & Power	13.92	13.92	63.81	63.81
Textile	13.32	12.82	24.06	23.90
Pharma. & Chemical	21.45	21.18	57.26	48.97
Paper & Printing	22.92	23.93	9.55	10.18
Service	22.18	22.15	21.85	21.85
Leather	11.16	11.33	113.01	139.70
Ceramic	26.40	26.34	20.65	20.65
Cement	26.10	26.33	54.73	54.73
IT	30.58	30.50	12.11	12.11
General Insurance	25.90	25.71	20.25	20.37
Life Insurance	18.54	19.69	68.15	68.15
Telecom	12.38	12.35	133.87	133.87
Travel & Leisure	23.54	25.83	25.94	25.28
Miscellaneous	4.42	4.43	147.99	144.44
Stock Exchanges	12.90	12.75	41.65	41.42

What you should know to buy or sell

Investors follow many calculations of corporate performance when deciding if a stock is undervalued or overvalued. These range from the simple price-earnings ratio, or P/E, to far more technical ways of attempting to discern whether a stock is trending up or down. Here are some of the most common.

RSI (Relative Strength Index): A technical momentum indicator that compares the size of recent gains to recent losses, in an attempt to determine overbought and oversold conditions of an asset. Stocks with more or strong gains have a higher RSI than stocks that had more or stronger losses. **SMA (Simple Moving Average):** A simple, or arithmetic, moving average is the average stock price over a certain period of time. It adds up the closing price of the security for a given period and then divides the total by the number of intervals. Short-term averages respond quickly to changes in the price of the stock, so appear less steady, while long-term averages are slow to react. **EMA (Exponential Moving Average):** A type of moving average that is similar to a simple moving average, except that more weight is given to the latest data. The exponential moving average is also known as "exponentially weighted moving average". **Bollinger Band:** A band that provides a relative definition of high and low, it was developed by famous technical trader John Bollinger. By definition, prices are high at the upper band and low at the lower band. The band usually plots two standard deviations away from a simple moving average. Because the standard deviation is a measure of volatility, the bands adjust themselves to market conditions. When the markets become volatile, the bands widen (move further away from the average); during less volatile periods, the bands contract. The closer the prices move to the upper band, the more overbought the market, and the closer the prices move to the lower band, the more oversold the market. **MACD (Moving Average Convergence Divergence):** A trend-following momentum indicator that shows the relationship between two moving averages of prices. It is used to spot changes in the strength, direction, momentum, and duration of a trend in a stock's price. **Divergence:** This happens when a security's price diverges from the MACD. It signals the end of the current trend.