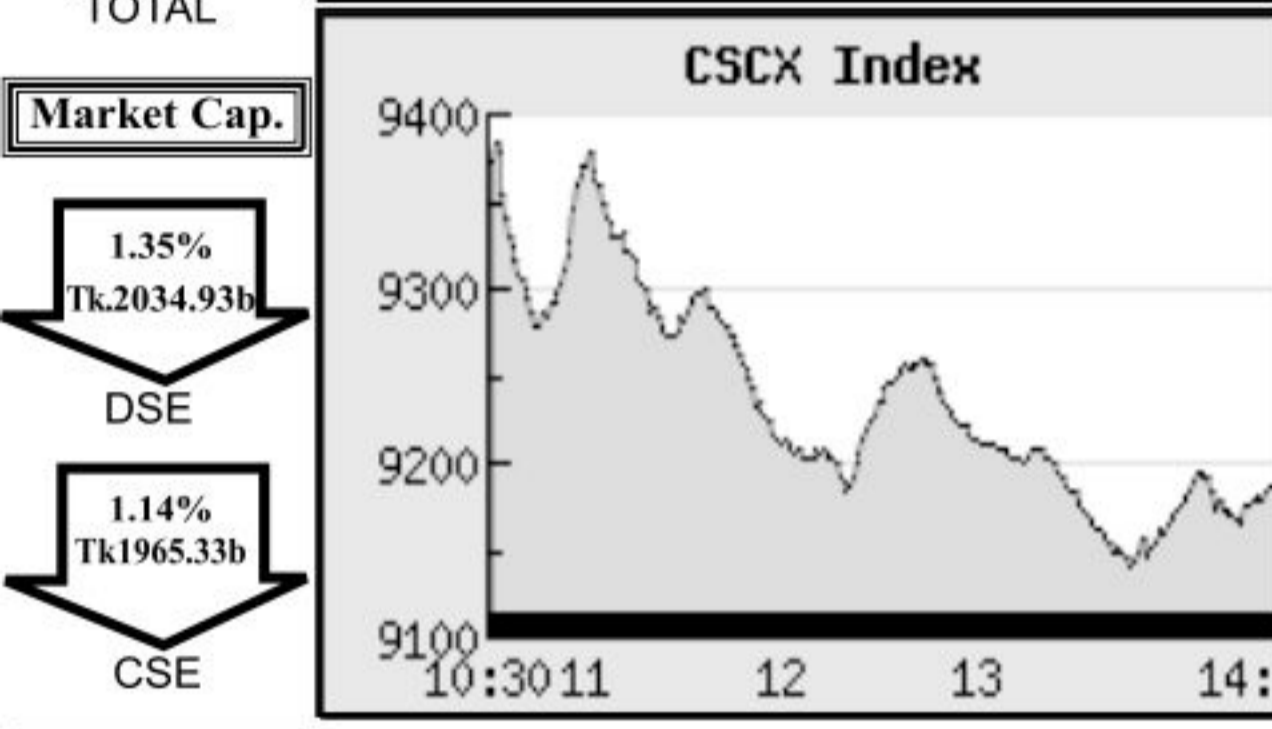
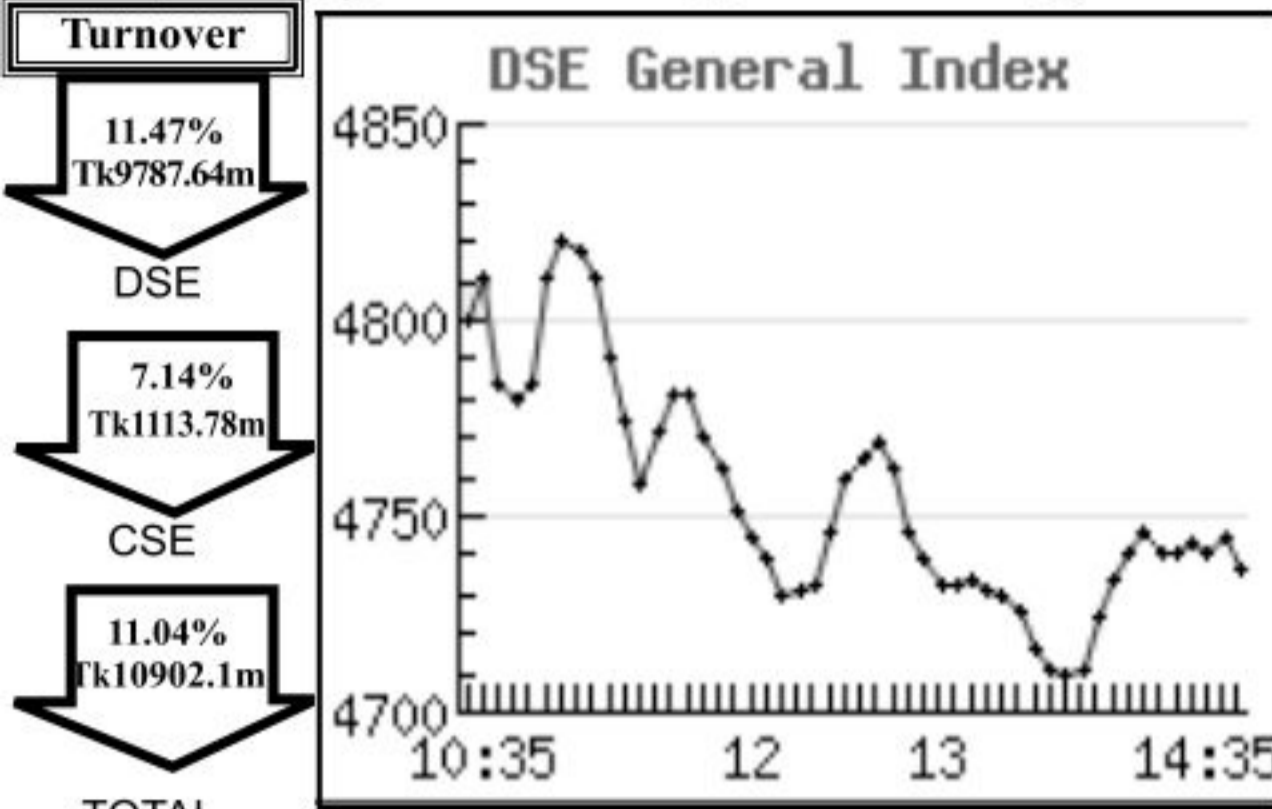


## Capital Market Highlights:

September 24 2012

INDEX	Change (%)
<b>DSE All Share</b>	4009.41020 (-1.42%)
<b>DSE General</b>	4736.97261 (-1.32%)
<b>DSE 20</b>	3619.38357 (-1.76%)
<b>CSE All Share</b>	14441.0621 (-1.93%)
<b>CSE CSCX</b>	9188.5154 (-1.82%)
<b>CSE 30</b>	12475.1034 (-1.85%)

Turnover	Change (%)
<b>DSE</b>	11.47% Tk9787.64m
<b>CSE</b>	7.14% Tk1113.78m
<b>TOTAL</b>	11.04% Tk10902.1m



Market Cap.	Change (%)
<b>DSE</b>	1.35% Tk2034.93b
<b>CSE</b>	1.14% Tk1965.33b

## Key Features - September 24, 2012

Indicators	DSE	CSE	TOTAL
Turnover (Million Taka)	9,787.65	1,113.79	10,901.43
Turnover (Volume)	242,606,888	30,893,777	273,500,665
No. of Contract	218,597	37,459	256,056
Traded Issues	272	205	272
Issue Gain (Avg. Price Basis)	99	80	99
Issue Loss (Avg. Price Basis)	173	124	173
Unchanged Issue (Avg. Price Basis)	-	-	-
Market Cap. Equity (Billion Tk.)	2,034.93	1,965.33	2,034.93
Market Cap. Equity (Billion US\$)	24.67	23.82	24.67

## Combined Turnover Leaders

Company	Volume (Share)	Value (M. Taka)	% of Total	Average Price
UNITED AIR-A	28908063	790.88	7.25	27.36
R. N. Spinning-A	13741538	582.40	5.34	42.38
Titas Gas TDCLA	5790250	550.27	5.05	95.03
UCBL - A	9943440	275.70	2.53	27.73
National Bank - A	8610498	236.40	2.17	27.45
Unique Hotel RL - N	1683800	226.85	2.08	134.73
BEXIMCO Ltd. -A	2921307	223.30	2.05	76.44
aamra technologies-N	2696750	202.24	1.86	74.99
Fu-Wang Food A	4886918	202.19	1.85	41.37
CMC Kamal Tex. -A	4478517	189.69	1.74	42.36
BSRM Steels-A	1848660	189.17	1.74	102.33
LankaBangla Fin. -A	2230012	180.00	1.65	80.72
People's Leasing-A	3741984	178.78	1.64	47.78
Keya Cosmetics -A	3726821	172.55	1.58	46.3
Saiham Tex.A	3757500	171.52	1.57	45.65
Jamuna Oil -A	604458	167.11	1.53	276.47
Saiham Cotton-N	3711000	166.46	1.53	44.86
One Bank -A	6323088	166.22	1.52	26.29
M.I. Cement-A	1254820	163.01	1.50	129.91
Golden Son -A	2441414	159.84	1.47	65.47
Beximco Syn.-A	3909871	137.26	1.26	35.11
Grameenphone-A	748800	130.08	1.19	173.71
EXIM Bank-A	6038985	127.85	1.17	21.17
Aftab Auto.-A	893660	118.88	1.09	133.03
Summit Power -A	1818439	113.46	1.04	62.39
Barakatullah E. D.-A	2018600	111.83	1.03	55.4
City Bank - A	3161461	100.17	0.92	31.68
Zahintex Ind.-N	1870500	98.77	0.91	52.8
Meghna Petroleum -A	405671	97.80	0.90	241.08
Fu-wang Ceramic-A	2567731	97.32	0.89	37.9

## Sectoral Turnover Summary

Sector	DSE		CSE		Total	
	Mill. (Tk.)	%	Mill. Tk.	%	Mill. Tk.	%
Bank	1416.16	14.47	253.78	22.77	1669.95	15.32
NBFI	814.55	8.32	84.58	7.59	899.12	8.25
Investment	468.03	4.78	38.35	3.44	506.38	4.64
Engineering	805.52	8.23	71.69	6.43	877.21	8.05
Food & Allied	296.66	3.03	15.44	1.39	312.10	2.86
Fuel & Power	1232.22	12.59	123.44	11.08	1355.66	12.43
Jute	1.73	0.02	0.00	0.00	1.73	0.02
Textile	1660.39	16.96	181.30	16.27	1841.69	16.89
Pharma & Chemical	465.22	4.75	35.87	3.22	501.09	4.60
Paper & Packaging	0.40	0.00	0.33	0.03	0.73	0.01
Service	52.88	0.54	6.34	0.57	59.22	0.54
Leather	17.87	0.18	0.94	0.08	18.81	0.17
Ceramic	137.98	1.41	11.18	1.00	149.17	1.37
Cement	304.34	3.11	51.22	4.60	355.55	3.26
Information Technology	209.85	2.14	39.03	3.50	248.87	2.28
General Insurance	529.88	5.41	20.87	1.87	550.75	5.05
Life Insurance	125.07	1.28	2.65	0.24	127.72	1.17
Telecom	121.52	1.24	8.56	0.77	130.08	1.19
Travel & Leisure	886.94	9.06	130.79	11.74	1017.73	9.34
Miscellaneous	239.71	2.45	37.96	3.41	277.66	2.55
Debtenture	0.76	0.01	0.08	0.01	0.83	0.01

## Sectoral P/E & EPS

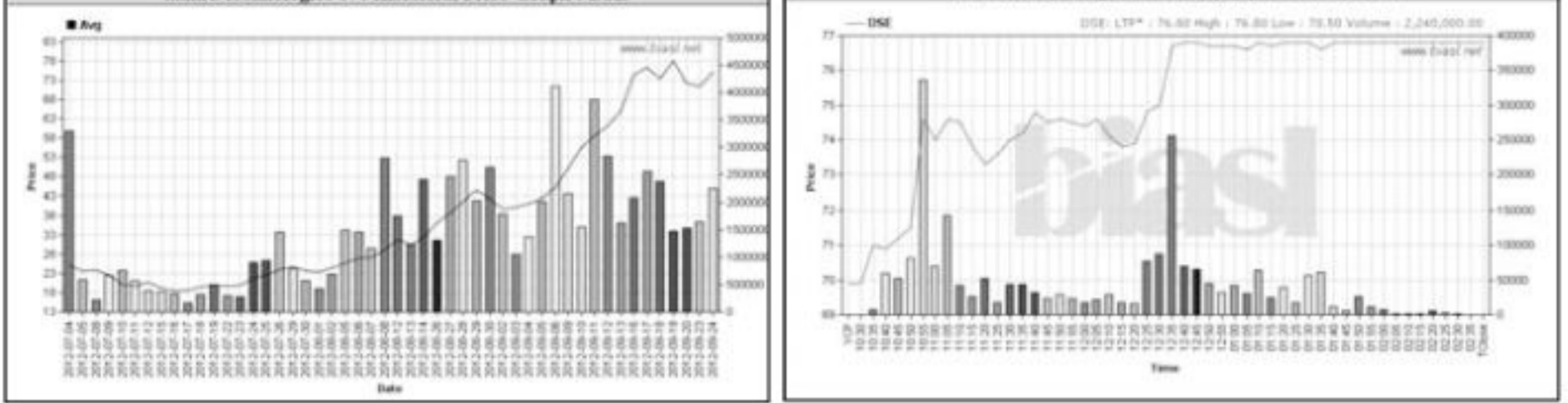
Sector	P/E		EPS(%)	
	DSE	CSE	DSE	CSE
Bank	9.28	9.26	32.47	32.47
NBFI	19.61	19.46	38.79	39.66
Investment	10.45	9.77	11.33	11.33
Engineering	21.14	21.28	42.66	40.80
Food & Allied	19.73	19.93	108.64	110.18
Fuel & Power	14.56	14.54	63.71	63.71
Textile	13.46	12.93	23.82	23.66
Pharma. & Chemical	21.76	21.39	57.26	48.97
Paper & Printing	22.63	23.05	9.55	10.18
Service	22.29	22.25	21.85	21.85
Leather	11.17	10.96	113.01	139.70
Ceramic	26.77	26.70	20.65	20.65
Cement	27.94	28.04	54.73	54.73
IT	29.81	29.75	12.11	12.11
General Insurance	26.96	26.92	20.25	20.37
Life Insurance	19.90	20.67	69.06	69.06
Telecom	12.88	12.84	134.95	134.95
Travel & Leisure	22.83	24.95	27.25	26.67
Miscellaneous	4.67	4.67	147.99	144.44
Stock Exchanges	13.30	13.12	41.69	41.46

Prepared exclusively for Daily Star by Business Information Automation Service Line (BIASL) on the basis of information collected from daily stock quotations and audited reports of the listed companies. High level of caution has been taken to collect and present the above information and data. The publisher will not take any responsibility if any body uses this information and data for his/her investment decision. For any query please email to biasl@bol-online.com or call 01552153562 or go to www.biasl.net

## Capital Gainers

Dhaka Stock Exchange

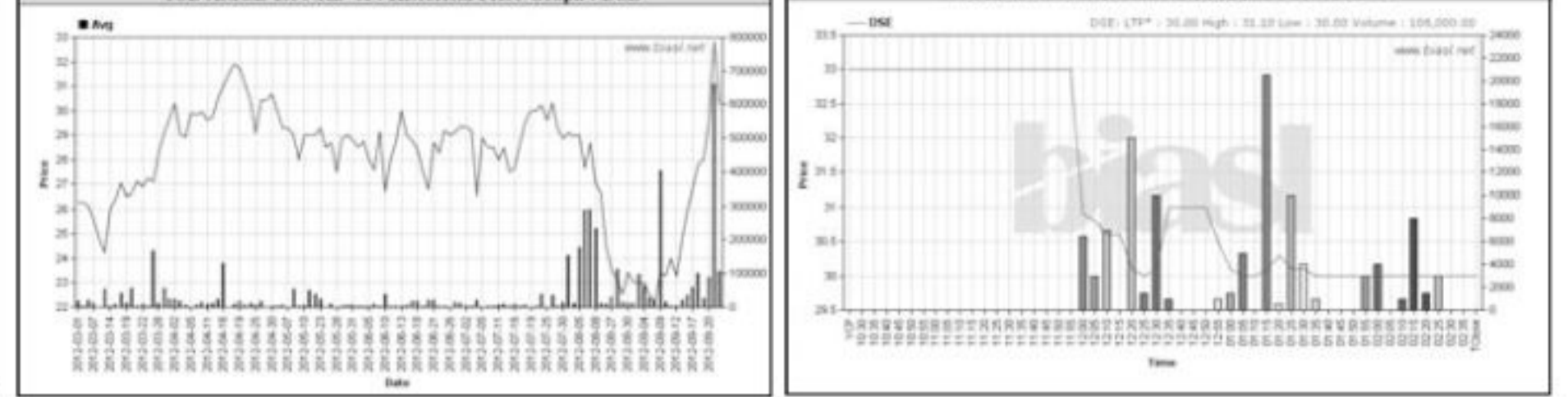
Company	Price Chn. (%)		Price Scale				Turnover		BookV			
	Close	Avg.	Avg.	Close	W Hi	W Lo	Yr Hi	Yr Lo	M.Tk	Per S	EPS	PE
aamra technologies-N	9.87	5.03	74.96	76.80	76.80	70.50	81.0	18.2	167.916	28.34	1.16	64.62
Global Insurance -A	9.49	8.40	48.64	49.60	49.80	41.30	65.0	29.4	36.837	11.75	1.03	47.22
Delta SpinnersA	9.04	11.04	59.62	60.30	60.80	57.00	60.8	20.2	63.303	21.61	1.38	43.20
Fu-Wang Food A	9.04	7.23	41.38	42.20	42.40	36.00	63.9	25.0	191.908	14.93	1.92	21.55
Bangas -A	8.73	9.60	224.02	224.30	224.30	210.00	224.3	101.4	5.000	13.45	1.46	153.44
Saiham Tex.A	8.16	6.96	45.66	46.40	47.00	44.30	70.9	17.0	152.766	20.75	1.1	41.51
Alltex Industries -Z	7.81	9.23	13.96	13.80	14.00	13.00	24.0	7.1	14.430	24.74	0.1	139.60
CMC Kamal Tex. -A	7.77	6.94	42.36	43.00	43.50	36.00	53.7	17.7	189.693	20.63	1.32	32.09
R. N. Spinning-A	6.78	9.85	42.39	42.50	43.70	35.90	91.0	18.8	525.495	16.58	2.8	15.14
Zeal Bangla Sugar -Z	5.98	5.29	12.35	12.40	12.70	11.70	19.5	8.6	0.127	-132.27	-17.65	-0.70



## Capital Losers

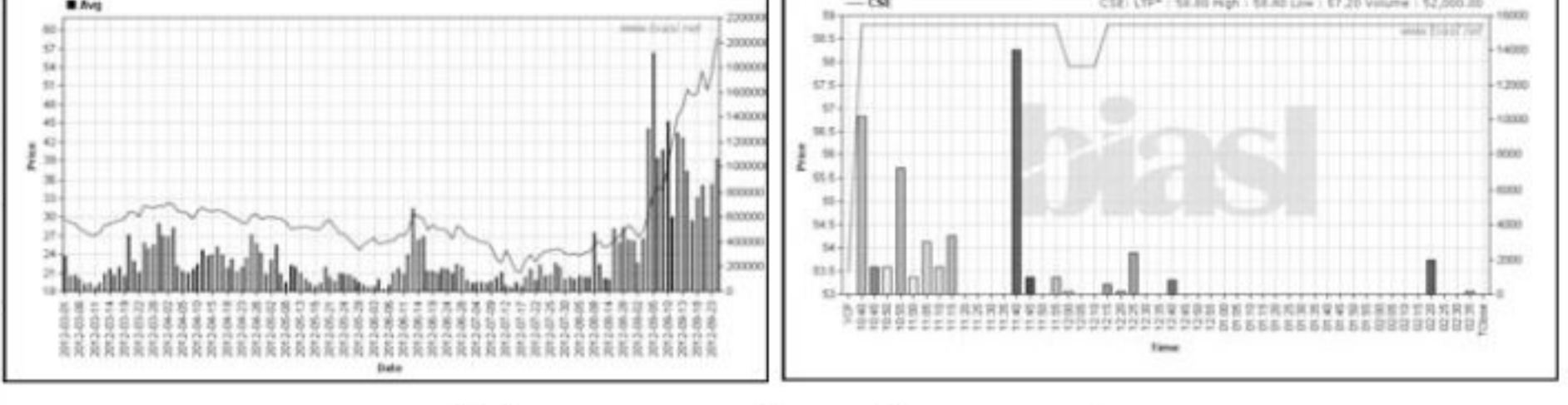
Dhaka Stock Exchange

Company	Price Chn. (%)		Price Scale				Turnover		BookV			
	Close	Avg.	Avg.	Close	W Hi	W Lo	Yr Hi	Yr Lo	M.Tk	Per S	EPS	PE
ICB AMCL 1st NRB -A	-9.09	-7.95	30.21	30.00	31.10	30.00	38.7	21.8	3.263	17.61	4.81	6.28
ICB Emp. PMF-A	-9.09	-8.44	8.14	8.00	9.10	8.00	10.0	5.6	7.009	11.65	1.44	5.65
2nd ICB M F-A	-8.74	-8.74	319.40	319.40	319.40	319.40	385.0	175.1	0.016	76.34	33.02	9.67
Imam Button -Z	-8.62	-8.12	16.07	15.90	17.00	15.70	44.4	9.3	0.490	7.35	-1.74	-9.24
Grameen1:Scheme2 -A	-8.29	-2.50	18.35	17.70	20.10	17.50	24.2	10.0	45.074	16.41	2.17	8.46
AIMS First -A	-7.32	-5.60	39.10	38.00	41.50	37.50	69.2	24.7	66.709	15.7	2.27	17.22
1st Janata Bank MF-A	-6.98	-4.00	8.17	8.00	8.80	7.90	9.5	5.4	9.585	10.68	-1.23	-6.64
7th ICB M F-A	-6.77	-6.83	74.40	74.40	74.60	74.00	109.0	7.0	0.186	32.05	13.47	5.52
AMCL 2nd MF-A	-6.74	-4.39	8.50	8.30	9.00	8.20	11.3	5.5	3.110	12.12	1.81	7.00
Meghna Con. Milk -B	-6.70	-6.14	16.81	16.70	18.10	16.30	43.8	10.3	1.202	-9.34	-4.43	-3.79



## Chittagong Stock Exchange

Company	Price Chn. (%)		Price Scale				Turnover		BookV			
	Close	Avg.	Avg.	Close	W Hi	W Lo	Yr Hi	Yr Lo	M.Tk	Per S	EPS	PE
aamra technologies-N	10.00	5.94	75.14	77.00	77.00	70.90	81.8	18.0	34.322	28.34	1.16	64.78
Delta SpinnersA	9.91	10.64	58.73	58.80	58.80	57.20	35.6	35.6	3.054	21.61	1.38	42.56
PrimeFin. 1st MF-A	9.59	9.11	15.93	16.00	15.10	15.10	23.7	8.8	0.661	26.31	2.83	5.63
Saiham Tex.A	9.48	7.97	45.51	46.20	46.40	43.80	70.9	17.2	18.750	20.75	1.1	41.37
AMCL 2nd MF-A	9.46	9.46	8.10	8.10	8.10	8.10	11.2	5.6	0.215	12.12	1.81	4.48
Alltex Industries -Z	9.38	9.39	13.98	14.00	14.00	13.00	17.1	17.1	3.425	24.74	0.1	139.80
Fu-Wang Food A	9.35	7.54	41.21	42.10	42.30	38.20	64.0	26.0	10.280	14.93	1.92	21.46
AIPL 1st Is. M. F-A	8.96	8.16	7.29	7.30	7.30	7.10	9.0	5.0	0.073	9.25	-0.75	-9.72
Beximco Syn.-A	8.36	4.19	35.31	36.30	36.80	34.10	40.6	40.6	19.012	26.94	1.37	25.77
GreenDeltainsu -A	7.10	7.10	89.00	89.00	89.00	89.00	178.0	83.1	0.089	48.7	2.62	33.97



## Chittagong Stock Exchange

Company	Price Chn. (%)		Price Scale				Turnover		BookV			
	Close	Avg.	Avg.	Close	W Hi	W Lo	Yr Hi	Yr Lo	M.Tk	Per S	EPS	PE
1st Janata Bank MF-A	-7.95	-4.63	8.23	8.10	9.50	8.00	9.5	5.1	0.864	10.68	-1.23	-6.69
Bata Shoe Ltd. -A	-7.02	-7.02	455.60	455.60	461.00	453.00	637.0	453.0	0.228	89.11	42.44	10.74
Grameen1:Scheme2 -A	-6.81	-3.80	17.96	17.80	20.00	17.30	24.0	11.3	5.931	16.41	2.17	8.28
EBL First M F-A	-6.54	-5.54	10.06	10.00	9.90	10.00	12.0	7.9	1.755	12.62	0.99	10.16
AIMS First -A	-6.47	-3.91	38.83	37.60	40.20	37.						