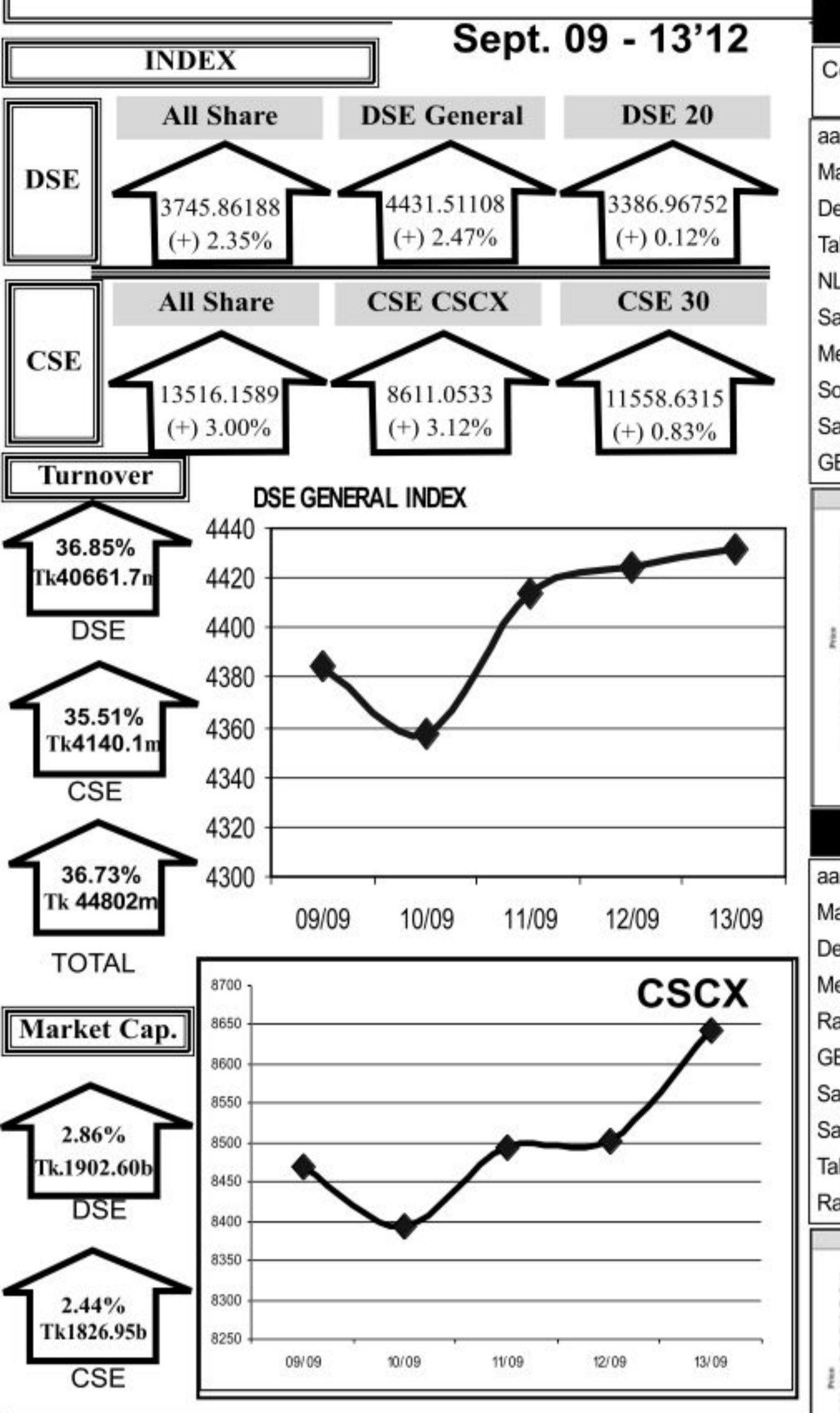


Weekly Capital Market Highlights:

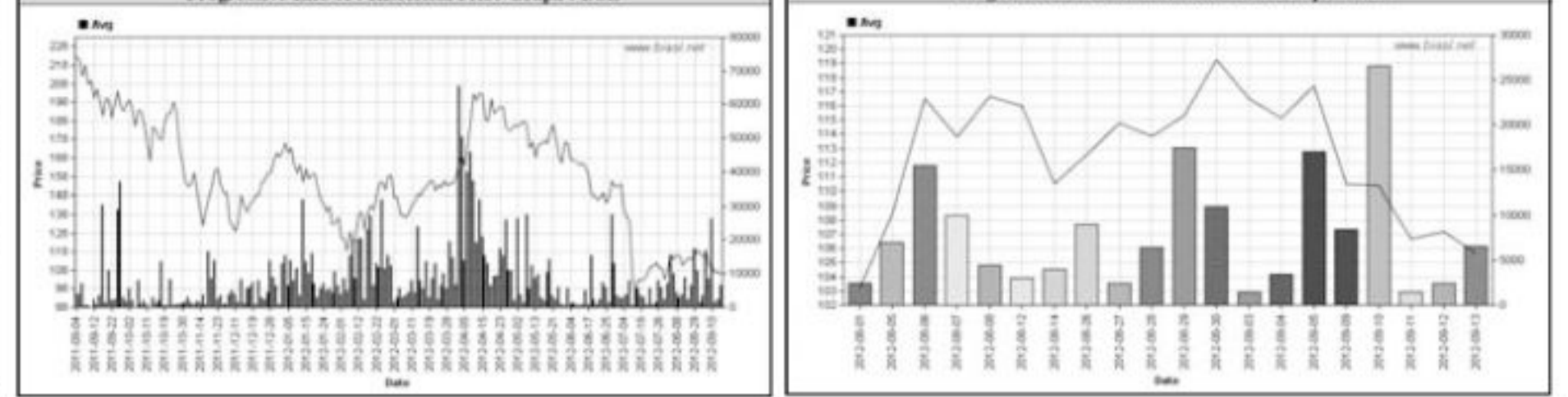
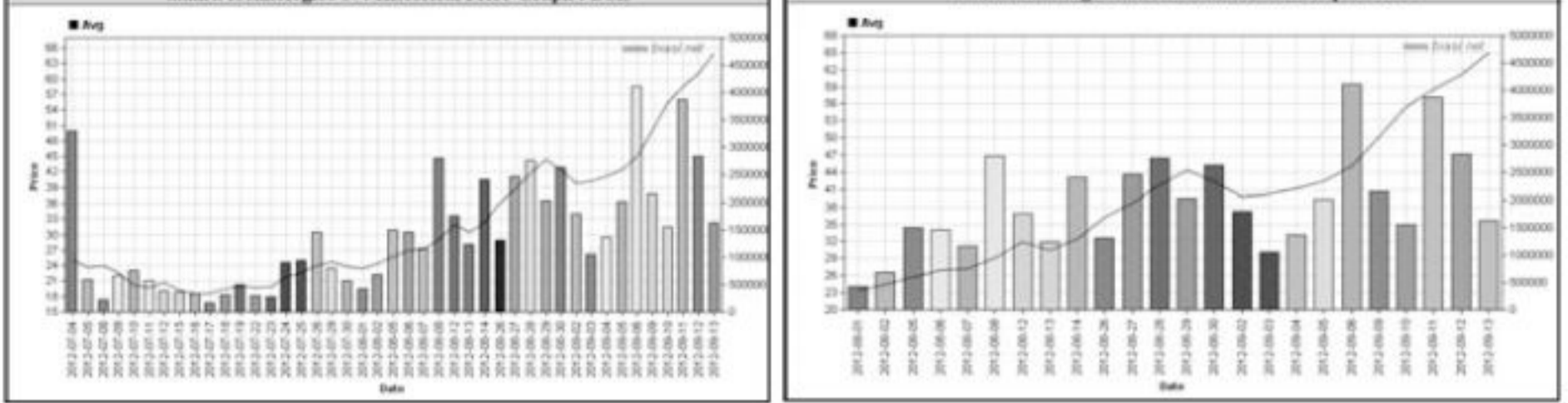


Capital Gainers

Dhaka Stock Exchange table listing top capital gainers with columns for Company, Price Chn. (%), Price Scale, Turnover, and BookV.

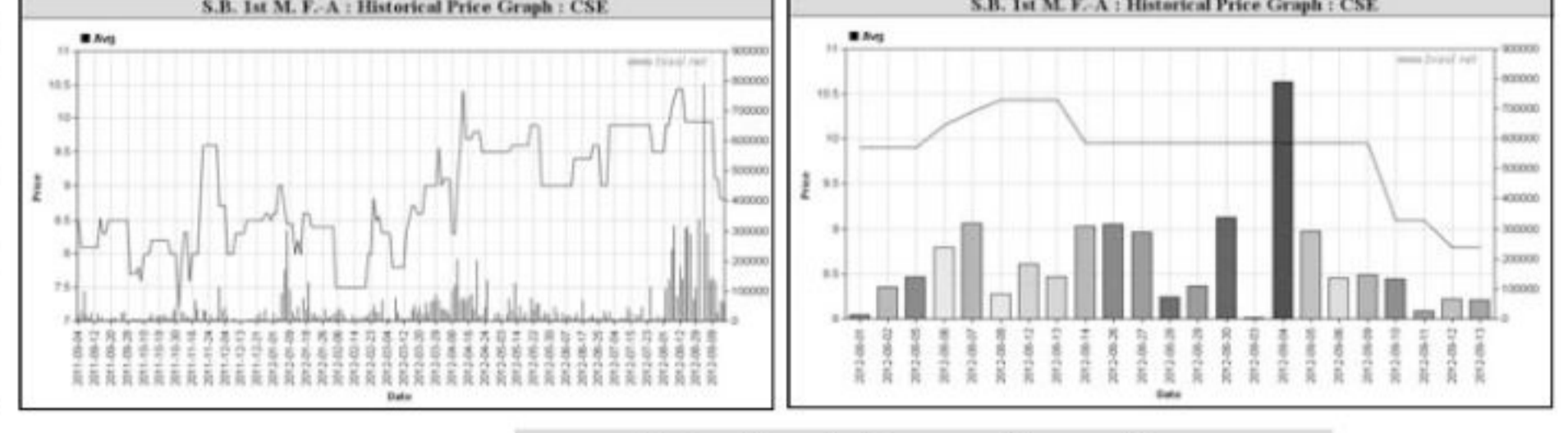
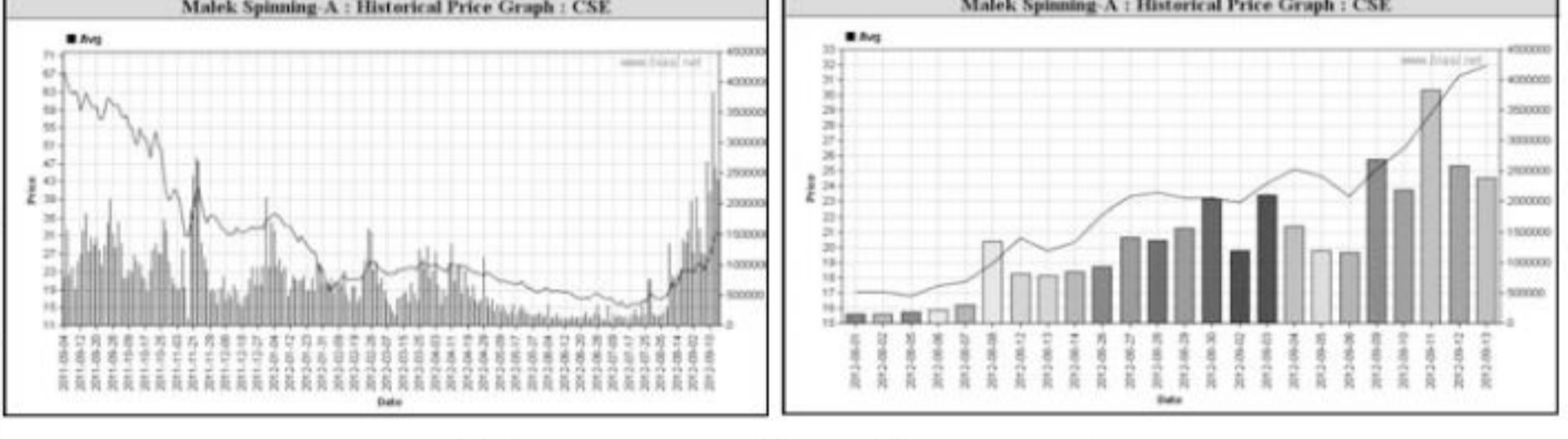
Capital Losers

Dhaka Stock Exchange table listing top capital losers with columns for Company, Price Chn. (%), Price Scale, Turnover, and BookV.



Chittagong Stock Exchange table listing top capital gainers with columns for Company, Price Chn. (%), Price Scale, Turnover, and BookV.

Chittagong Stock Exchange table listing top capital losers with columns for Company, Price Chn. (%), Price Scale, Turnover, and BookV.



Key Features - Sept. 09 - 13, 2012

Table of market indicators: Turnover (Million Taka), Turnover (Volume), No. of Contract, Traded Issues, Issue Gain, Issue Loss, Unchanged Issue, Market Cap. Equity (Billion Tk. & US\$).

Turnover Leaders

Dhaka Stock Exchange table listing turnover leaders with columns for Company, Vol., Value, % of Share, Price Scale, C.Avg, BookV, EPS, PE.

Market Cap. Leader

Dhaka Stock Exchange table listing market capitalization leaders with columns for Company, Market Cap., % of Total, Average Price, Price Scale, BookV, EPS, PE.

Combined Turnover Leaders

Table listing combined turnover leaders across DSE and CSE with columns for Company, Volume, Value, %of Total, Average Price.



Sectoral Turnover Summary

Table summarizing turnover by sector: Bank, NBFI, Investment, Engineering, Food & Allied, Fuel & Power, Jute, Textile, Pharma & Chemical, Paper & Packaging, Service, Leather, Ceramic, Cement, IT, General Insurance, Life Insurance, Telecom, Travel & Leisure, Miscellaneous, Debiture.

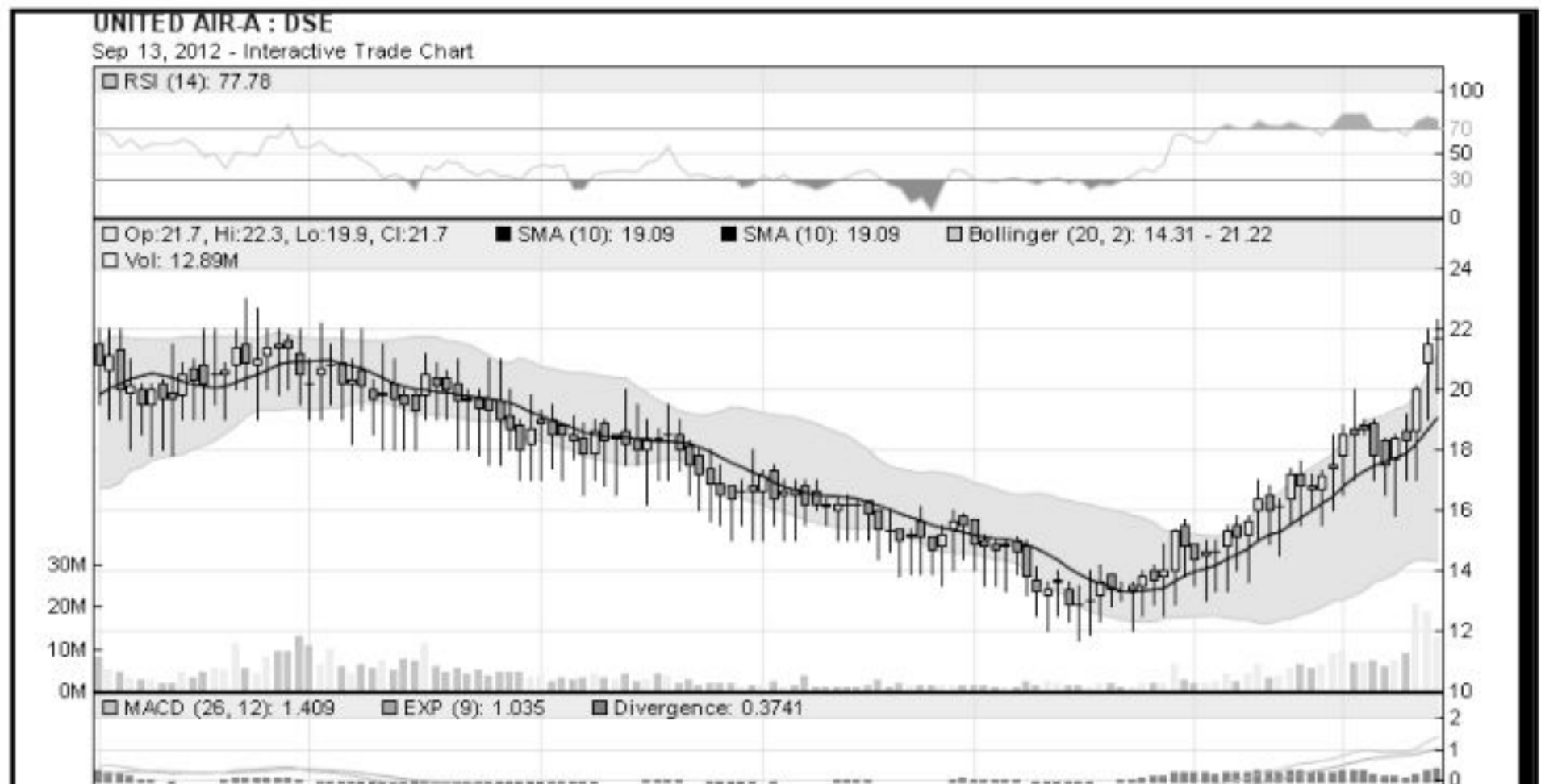
What you should know to buy or sell

Investors follow many calculations of corporate performance when deciding if a stock is undervalued or overvalued. These range from the simple price-earnings ratio, or P/E, to far more technical ways of attempting to discern whether a stock is trending up or down. Here are some of the most common. RSI (Relative Strength Index): A technical momentum indicator that compares the size of recent gains to recent losses...

Sectoral P/E & EPS

Table showing P/E and EPS ratios by sector: Bank, NBFI, Investment, Engineering, Food & Allied, Fuel & Power, Textile, Pharma. & Chemical, Paper & Printing, Service, Leather, Ceramic, Cement, IT, General Insurance, Life Insurance, Telecom, Travel & Leisure, Miscellaneous, Stock Exchanges.

Prepared exclusively for Daily Star by Business Information Automation Service Line (BIASL), on the basis of information collected from daily stock quotations and audited reports of the listed companies. High level of caution has been taken to collect and present the above information and data. The publisher will not take any responsibility if any body uses this information and data for his/her investment decision.



Notes: Capital Gainer / Loser tables are prepared on the basis of the close price change of the traded issues. "Close" or "C Price" or "W Clo." is the Closing Price of the Week. "Chn %" indicates the price difference in percentage. "Avg" prices indicate weighted average prices of all transactions of the last day of the week. "Yr Hi" and "W Lo" indicate the highest and lowest transacted price of the week. "Yr Lo" and "Yr Hi" indicate the highest and lowest transacted price last one running year, everyday the range moves by one day. "P W" - Previous Week. EPS is based on available latest audited accounts of the companies. EPS & Book value per share are diluted at bookclosing date whenever it is applicable. Only the positive earning companies are considered in calculating the PER and EPS of the Sectors and Stock Exchanges.