

Capital Market Highlights:

August 13 2012

INDEX

DSE
All Share: 3563.59589 (-0.70%)
DSE General: 4208.39671 (-0.66%)
DSE 20: 3347.07666 (-0.24%)

CSE
All Share: 12723.0100 (-0.79%)
CSE CSCX: 8092.1168 (-0.74%)
CSE 30: 11092.2223 (-0.69%)

Turnover

DSE: 26.16% Tk 2789.58m
CSE: 27.96% Tk 312.25m
TOTAL: 26.35% Tk 3101.83m

Market Cap.

DSE: 0.68% Tk 1792.04b
CSE: 0.76% Tk 1734.55b

DSE General Index
4280
4260
4240
4220
4200
4180
11:05 12 13 14:

CSCX Index
8250
8200
8150
8100
8050
11:00 12 13 14:00

Capital Gainers

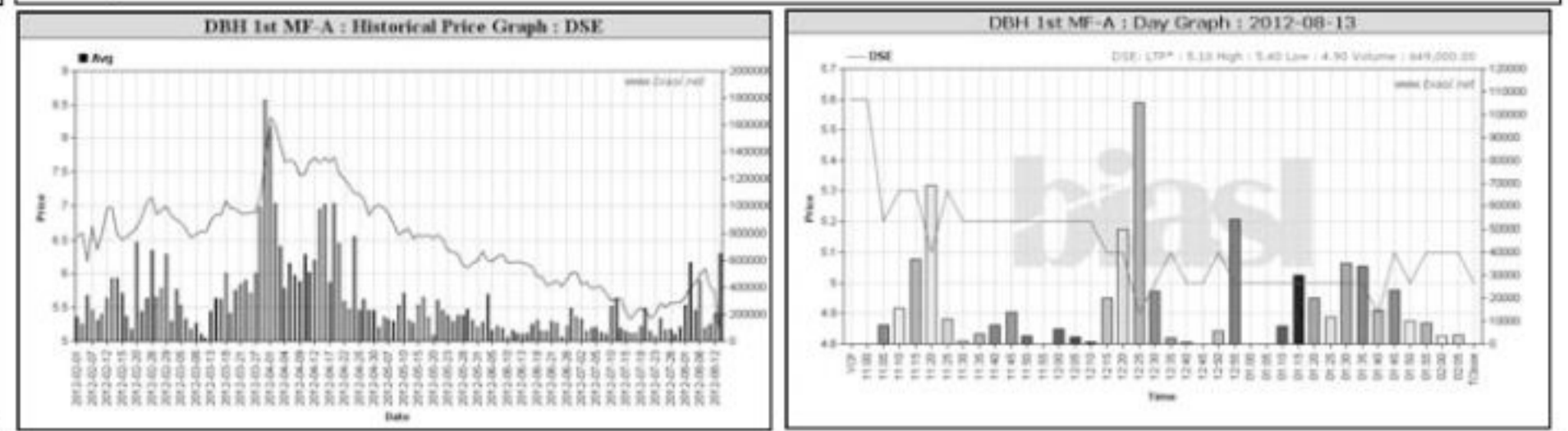
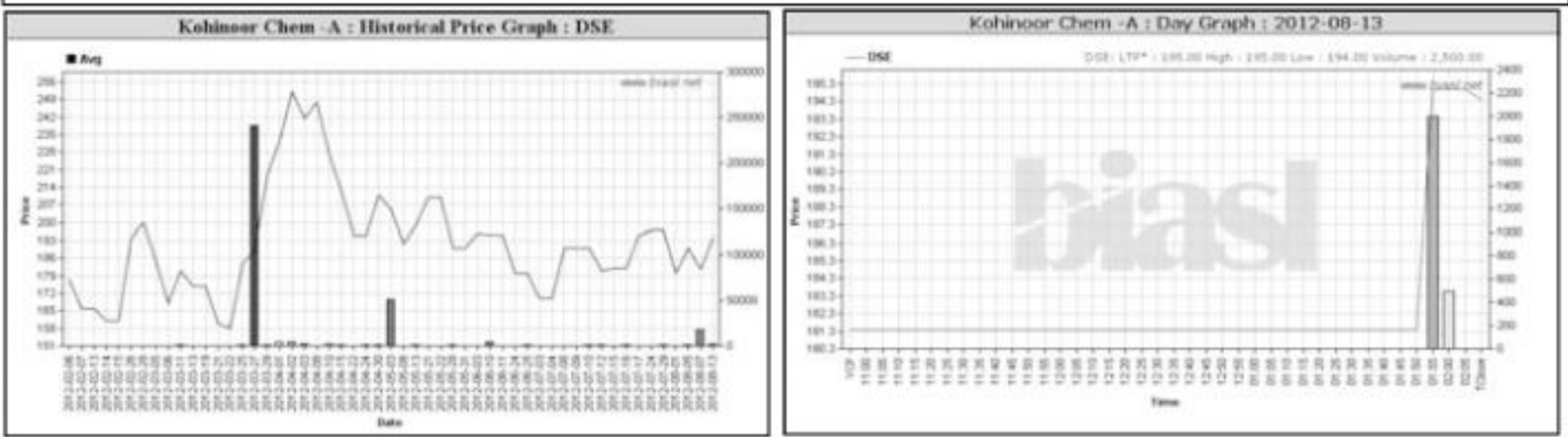
Dhaka Stock Exchange

Company	Price Chn. (%)		Price Scale					Turnover		BookV		
	Close	Avg.	Avg.	Close	W Hi	W Lo	Yr Hi	YrLo	M.Tk	Per S	EPS	PE
Kohinoor Chem -A	7.17	6.90	194.02	194.40	195.00	175.00	253.3	158.0	0.495	-13.07	7.41	26.18
Rahim Textile -A	4.59	5.89	120.00	118.60	119.90	118.00	270.1	106.0	0.018	73.23	3.82	31.41
Summit Power -A	4.54	3.60	59.92	59.90	61.20	52.00	96.6	43.0	124.896	20.76	5.1	11.75
Bangas -A	3.52	2.77	125.20	126.40	127.50	122.10	204.0	101.4	2.047	13.45	1.46	85.75
Barakatullah E. D.-A	3.40	2.45	45.56	45.60	46.30	40.00	85.1	28.1	77.190	19.73	1.59	28.65
ICB -A	2.91	1.18	1,746.23	1,769.25	1,779.00	1,710.00	3860.01	230.0	7.832	889.8	151.12	11.56
Brac Bank -A	2.69	1.64	30.29	30.50	30.90	27.00	51.4	26.1	10.696	25.45	4.62	6.56
National Tea -A	2.57	2.19	768.46	771.00	772.00	705.00	772.0	475.0	0.799	83.5	8.1	94.87
Uniqtel Hotel RL - N	2.57	0.63	90.96	91.70	93.00	88.20	93.9	62.6	129.111	60.65	4.09	22.24
SummitAlliancePort.-A	2.44	1.20	33.66	33.60	34.20	32.00	85.0	29.0	5.201	42.77	1.31	25.69

Capital Losers

Dhaka Stock Exchange

Company	Price Chn. (%)		Price Scale					Turnover		BookV		
	Close	Avg.	Avg.	Close	W Hi	W Lo	Yr Hi	YrLo	M.Tk	Per S	EPS	PE
DBH 1st MF-A	-10.71	-11.52	5.07	5.00	5.40	4.90	13.5	4.9	3.291	10.15	-1.12	-4.53
ICB AMCL 1st M F-A	-9.95	-11.96	51.60	51.60	51.60	51.60	65.2	32.1	0.103	21.76	7.38	6.99
ICB AMCL IslamicMF-A	-9.73	-10.25	20.40	20.40	20.40	20.40	37.4	16.1	0.061	16.87	4.17	4.89
ICB AMCL 2nd NRB -A	-9.62	-8.80	14.10	14.10	14.10	14.10	18.0	10.7	0.049	13.84	2.85	4.95
5th ICB M F-A	-9.49	-10.31	115.00	114.50	114.60	114.50	193.8	114.5	0.069	41.95	18.93	6.08
Phoenix Fin. 1st MF-A	-9.09	-9.24	5.01	5.00	5.10	5.00	12.2	4.7	2.072	11.33	1.33	3.77
Trust Bank 1st MF-A	-8.97	-8.18	7.30	7.10	7.80	7.10	13.5	6.5	7.081	11.65	0.61	11.97
AMCL 2nd MF-A	-8.96	-8.90	6.14	6.10	6.20	6.10	12.1	6.1	0.264	12.12	1.81	3.39
Prime Bank 1st MF-A	-8.77	-8.58	5.22	5.20	5.30	5.20	9.4	5.1	0.128	11.59	1.35	3.87
ICB Emp. PMF-A	-5.97	-6.77	6.33	6.30	6.50	6.30	11.0	6.3	0.364	11.65	1.44	4.40

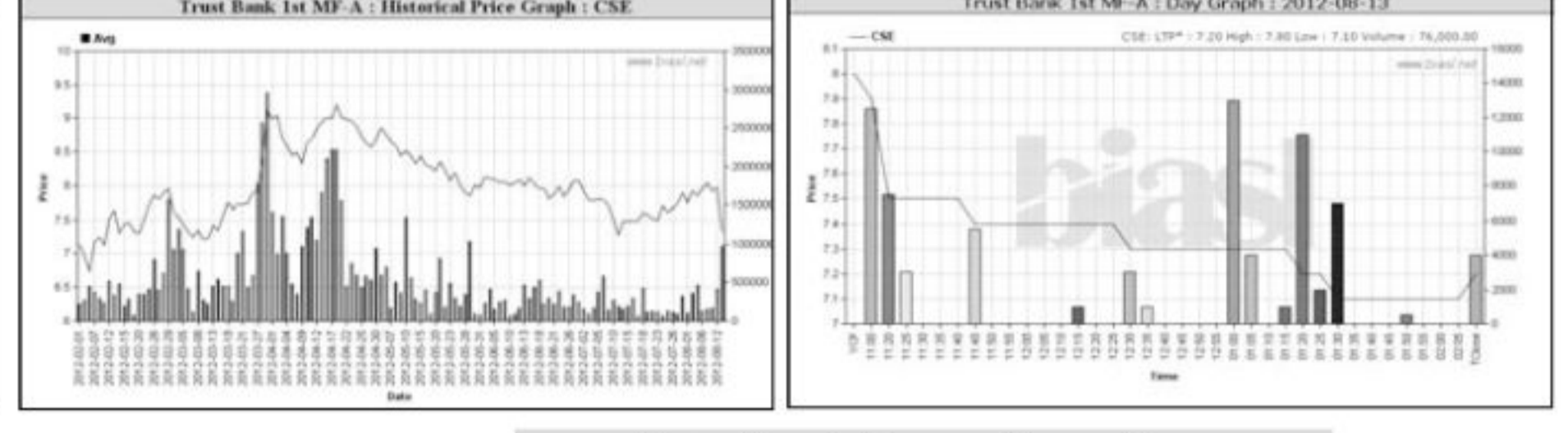
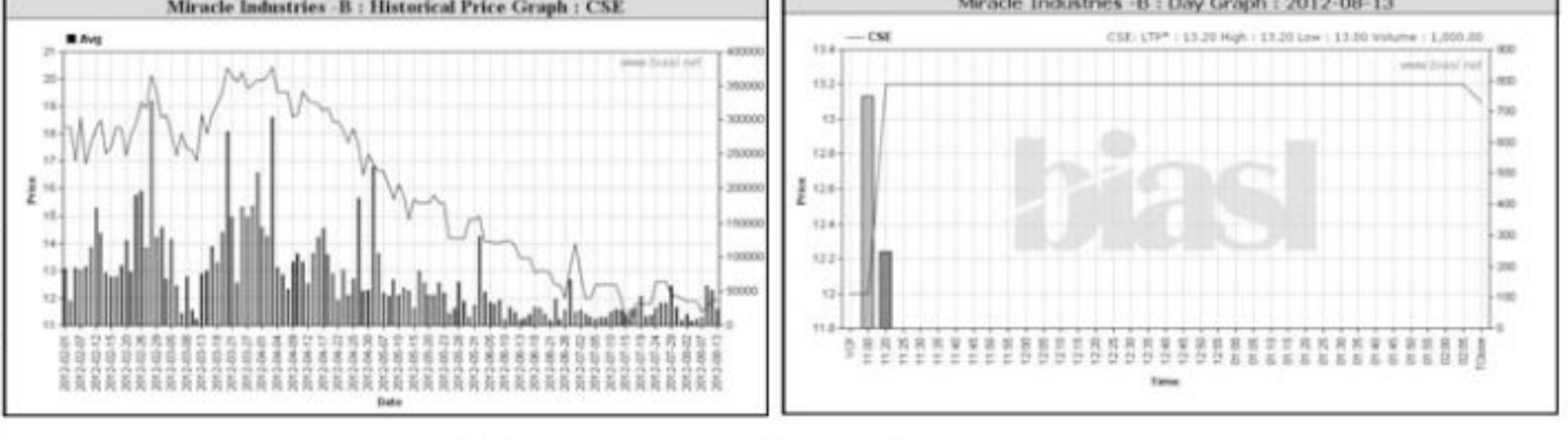


Chittagong Stock Exchange

Company	Price Chn. (%)		Price Scale					Turnover		BookV		
	Close	Avg.	Avg.	Close	W Hi	W Lo	Yr Hi	YrLo	M.Tk	Per S	EPS	PE
Miracle Industries -B	9.17	9.81	13.10	13.10	13.20	13.00	35.0	11.0	0.013	15.5	0.21	62.38
Aziz PipesZ	8.98	8.98	18.20	18.20	18.20	18.20	29.0	29.0	0.009	-40.88	-0.99	-18.38
National Life I -A	4.18	3.87	324.00	324.00	324.00	324.00	342.1	342.1	0.049	80.99	12.34	26.26
Onno Ceramic -A	4.11	1.04	38.00	38.00	38.00	38.00	95.7	32.0	0.156	18.47	14.9	25.50
Brac B.C. Bond-A	4.04	4.04	1030.00	1030.00	1030.00	1030.00	1100.0	910.0	0.005	0	0	-
Summit Power -A	4.01	3.51	59.61	59.60	61.00	57.90	96.4	5.0	12.266	20.76	5.1	11.69
National Polymer -A	3.19	5.86	35.60	35.60	36.00	35.30	87.0	31.1	0.011	38.04	2.22	16.64
Barakatullah E. D.-A	2.94	2.18	45.45	45.50	46.30	44.10	85.0	28.0	7.145	19.73	1.59	28.58
Phoenix Insur -A	2.69	6.82	67.62	65.00	67.80	65.00	113.0	48.0	0.920	22.76	3.11	21.74
Apex Tannery -A	2.60	2.59	90.83	90.80	92.40	90.00	124.2	124.2	0.027	66.44	7.07	12.85

Chittagong Stock Exchange

Company	Price Chn. (%)		Price Scale					Turnover		BookV		
	Close	Avg.	Avg.	Close	W Hi	W Lo	Yr Hi	YrLo	M.Tk	Per S	EPS	PE
DBH 1st MF-A	-12.28	-10.26	5.16	5.00	5.30	4.80	14.0	4.8	0.356	10.15	-1.12	-4.61
AMCL 2nd MF-A	-10.00	-10.00	6.30	6.30	6.30	6.30	12.6	6.3	0.044	12.12	1.81	3.48
Trust Bank 1st MF-A	-10.00	-8.03	7.33	7.20	7.80	7.10	14.0	6.7	0.557	11.65	0.61	12.02
ICB AMCL 1st M F-A	-9.91	-15.07	51.80	51.80	51.80	51.80	64.9	41.0	0.777	21.76	7.38	7.02
ICB AMCL 2nd NRB -A	-9.80	-11.20	13.80	13.80	13.80	13.80	17.6	10.0	0.041	13.64	2.85	4.84
1st Janata Bank MF-A	-9.68	-9.65	5.62	5.60	6.00	5.10	9.1	5.1	0.329	10.68	-1.23	-4.57
Standard Ceramic-B	-9.26	-9.26	24.50	24.50	24.50	24.50	53.4	24.1	0.025	14.9	0.62	39.52
Phoenix Fin. 1st MF-A	-9.09	-8.73	5.02	5.00	5.10	5.00	12.0	4.9	0.015	11.33	1.33	3.77
Janata Insur -Z	-8.43	-8.10	253.89	253.00	270.00	252.25	645.0	202.0	0.051	171.32	5.73	44.31
Midas Financing-A	-7.03	-6.30	34.67	34.40	37.00	34.20	123.0	34.2	0.347	10.05	-1.99	-17.42
Trust Bank 1st MF-A	-7.03	-6.30	34.67	34.40	37.00	34.20	123.0	34.2	0.347	10.05	-1.99	-17.42



Key Features - August 13, 2012

Indicators	DSE	CSE	TOTAL
Turnover (Million Taka)	2,789.58	312.25	3,101.84
Turnover (Volume)	65,580,953	8,932,771	74,513,724
No. of Contract	81,410	14,563	95,973
Traded Issues	258	187	258
Issue Gain (Avg. Price Basis)	46	43	46
Issue Loss (Avg. Price Basis)	205	144	205
Unchanged Issue (Avg. Price Basis)	7	7	7
Market Cap. Equity (Billion Tk.)	1,792.04	1,734.55	1,792.04
Market Cap. Equity (Billion US\$)	21.72	21.02	21.72

Combined Turnover Leaders

Company	Volume (Share)	Value (M. Taka)	% of Total	Average Price
Meghna Petroleum -A	847094	189.32	6.10	223.5
BD Submarine Cable-N	1807400	164.82	5.31	91.19
Uniqtel Hotel RL - N	1702800	154.78	4.99	90.9
Jamuna Oil -A	593910	151.90	4.90	255.76
Summit Power -A	2290154	137.16	4.42	59.89
Square Pharma -A	448403	117.58	3.79	262.22
Titas Gas TDCLA	1376250	104.89	3.38	76.21
R. N. Spinning-A	3673076	102.31	3.30	27.85
Keya Cosmetics -A	2325833	88.32	2.85	37.97
Barakatullah E. D.-A	1851440	84.34	2.72	45.55
Grameenphone-A	382787	73.50	2.37	192.02
M.I. Cement-A	657921	72.85	2.35	110.72
UNITED AIR-A	4252054	69.09	2.23	16.25
Saiham Cotton-N	2595900	61.18	1.97	23.54
National Bank -A	2540152	58.67	1.89	23.1
Khulna Power-A	1071202	57.69	1.86	53.86
aamra technologies-N	1490000	45.35	1.46	30.44
One Bank -A	2161004	44.94	1.45	20.8
LankaBangla Fin. -A	698400	42.13	1.36	60.33
GPH Ispat Ltd-N	527500	39.67	1.28	75.21
BEXIMCO Ltd. -A	624781	37.90	1.22	60.66
UCBL -A	1608389	33.80	1.09	21.01
Standard Bank -A	1748452	33.67	1.09	19.26
Aftab Auto.-A	253976	30.29	0.98	119.28
Islami Bank BD -A	693002	28.38	0.92	40.96
Active Fine Chem.-A	458935	28.24	0.91	61.53
MJL BD Ltd.-A	356398	27.46	0.89	77.05
LafargeS Cement-Z	734000	25.30	0.82	34.47
Golden Son -A	458950	23.19	0.75	50.53
GBB Power Ltd-N	659000	22.25	0.72	33.76

Sectoral Turnover Summary

Sector	DSE		CSE		Total	
	Mill. (Tk.)	%	Mill. Tk.	%	Mill. Tk.	%
Bank	370.44	13.28	59.19	18.96	429.63	13.85
NBFI	146.23	5.24	15.14	4.85	161.37	5.20
Investment	67.34	2.41	5.25	1.68	72.59	2.34
Engineering	161.03	5.77	16.53	5.29	177.56	5.72
Food & Allied	34.19	1.23	1.61	0.52	35.80	1.15
Fuel & Power	769.97	27.60	47.15	15.10	817.11	26.34
Jute	0.47	0.02	0.00	0.00	0.47	0.02
Textile	243.96	8.75	30.59	9.80	274.55	8.85
Pharma & Chemical	267.55	9.59	19.13	6.13	286.69	9.24
Paper & Packaging	0.15	0.01	0.02	0.01	0.17	0.01
Service	15.32	0.55	1.57	0.50	16.89	0.54
Leather	3.80	0.14	0.03	0.01	3.83	0.12
Ceramic	15.07	0.54	2.34	0.75	17.41	0.56
Cement	102.33	3.67	14.25	4.57	116.58	3.76
Information Technology	42.98	1.54	8.86	2.84	51.83	1.67
General Insurance	83.87	3.01	4.89	1.57	88.76	2.86