

**Capital Market Highlights:**

**INDEX August 12 2012**

INDEX	All Share	DSE General	DSE 20
DSE	3588.84096 (+) 2.08%	4236.46049 (+) 2.27%	3355.00170 (+) 2.27%
INDEX	All Share	CSE CSCX	CSE 30
CSE	12824.8132 (+) 2.05%	8152.5899 (+) 2.19%	11169.8129 (+) 2.55%

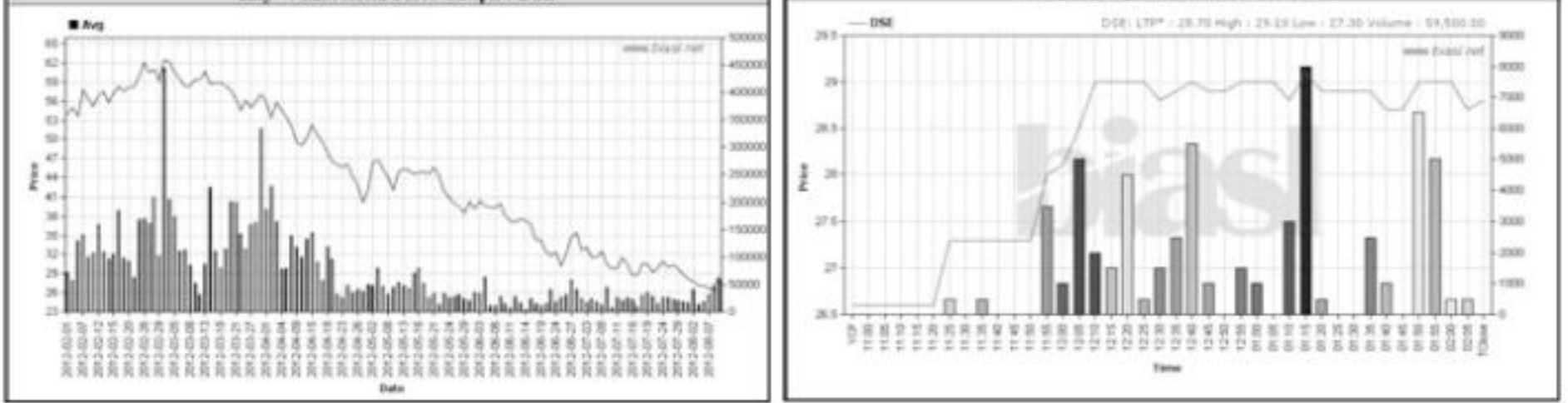
**Turnover**  
 DSE: 2.30% Tk 3777.94m  
 CSE: 2.15% Tk 433.46m  
 TOTAL: 1.83% Tk 4211.41m

**Market Cap.**  
 DSE: 2.04% Tk 1804.25b  
 CSE: 2.02% Tk 1747.86b

**Capital Gainers**

**Dhaka Stock Exchange**

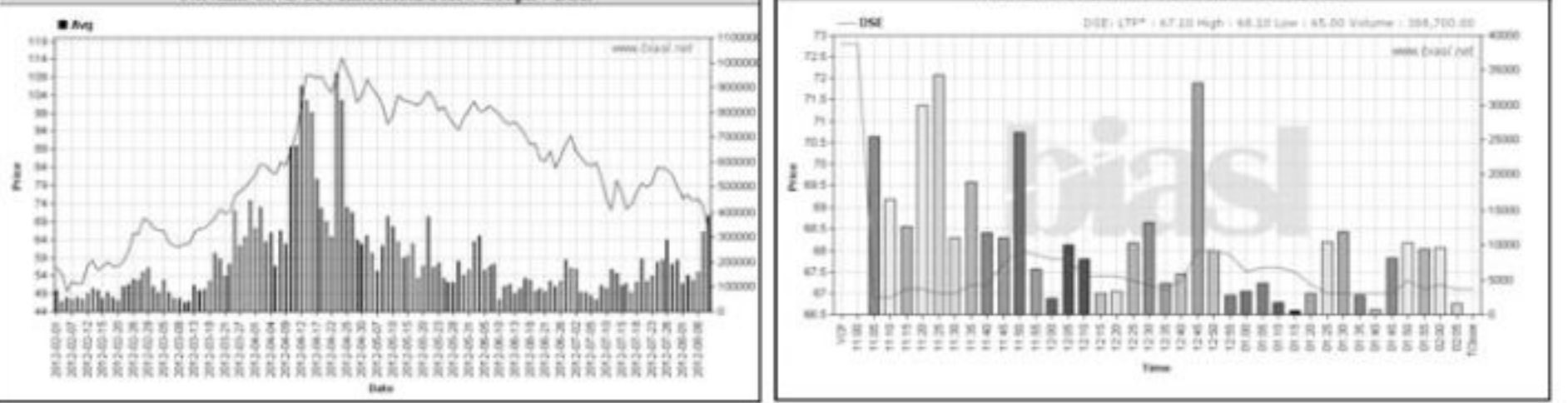
Company	Price Chn. (%)		Price Scale						Turnover		BookV	
	Close	Avg.	Avg.	Close	W Hi	W Lo	Yr Hi	Yr Lo	M.Tk	Per S	EPS	PE
Kay & Que (BD) -B	8.27	8.86	28.76	28.80	29.10	27.30	64.1	24.5	1.711	10.02	0.51	56.39
Standard Bank -A	7.47	6.44	18.50	18.70	19.00	15.80	34.1	15.6	19.443	14.1	2.66	6.95



**Capital Losers**

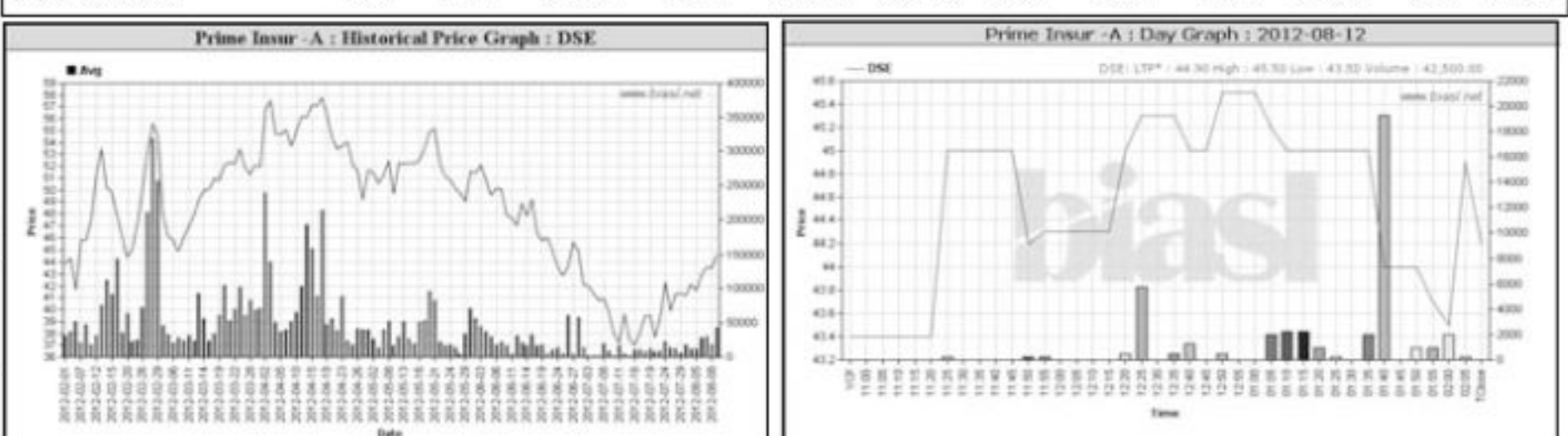
**Dhaka Stock Exchange**

Company	Price Chn. (%)		Price Scale						Turnover		BookV	
	Close	Avg.	Avg.	Close	W Hi	W Lo	Yr Hi	Yr Lo	M.Tk	Per S	EPS	PE
Navana CNG-A	-7.83	-8.38	67.26	67.10	68.10	58.50	134.0	48.6	26.152	27.32	5.08	13.24
Grameen M F One-A	-5.04	-3.23	45.91	45.20	48.50	44.40	123.9	30.1	8.722	33.23	6.26	7.34



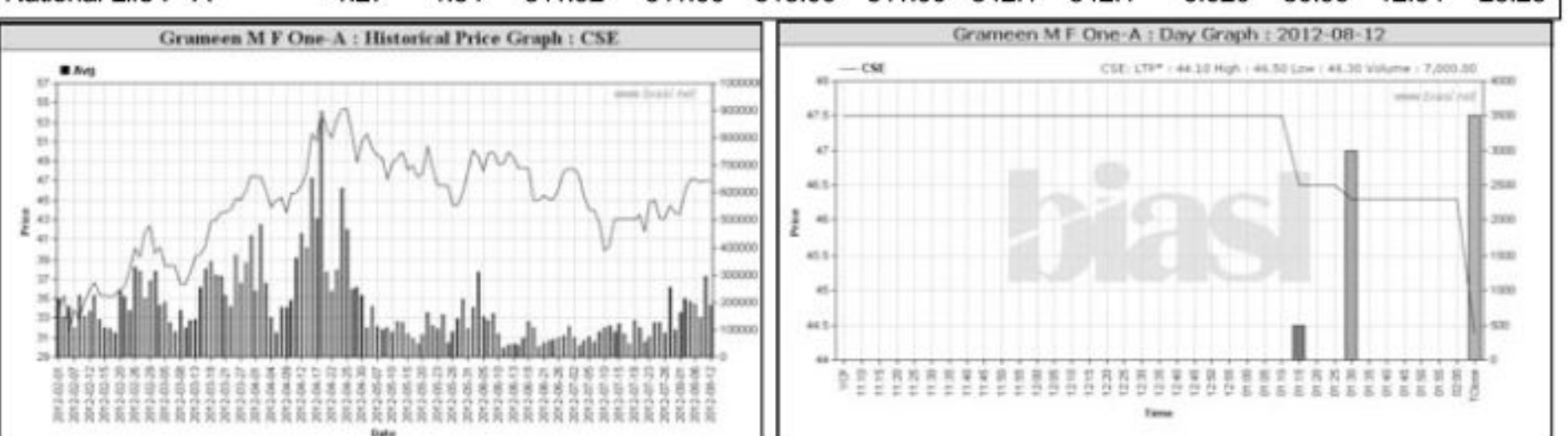
**Chittagong Stock Exchange**

Company	Price Chn. (%)		Price Scale						Turnover		BookV	
	Close	Avg.	Avg.	Close	W Hi	W Lo	Yr Hi	Yr Lo	M.Tk	Per S	EPS	PE
Prime Insur -A	10.00	10.47	41.80	41.80	41.80	41.80	80.0	35.0	0.021	13.79	1.73	24.16
Fine Foods A	9.50	9.11	19.53	19.60	19.60	17.00	78.0	17.0	0.099	12.94	1.57	12.44



**Chittagong Stock Exchange**

Company	Price Chn. (%)		Price Scale						Turnover		BookV	
	Close	Avg.	Avg.	Close	W Hi	W Lo	Yr Hi	Yr Lo	M.Tk	Per S	EPS	PE
Navana CNG-A	-8.67	-10.83	67.01	66.40	68.50	65.10	210.0	47.9	3.658	27.32	5.08	13.19
Grameen M F One-A	-6.53	-3.51	45.35	44.40	46.50	46.30	123.0	30.4	0.317	33.23	6.26	7.24



**Key Features - August 12, 2012**

Indicators	DSE	CSE	TOTAL
Turnover (Million Taka)	3,777.94	433.46	4,211.40
Turnover (Volume)	87,050,032	11,763,037	98,813,069
No. of Contract	107,055	17,658	124,713
Traded Issues	251	187	251
Issue Gain (Avg. Price Basis)	220	169	220
Issue Loss (Avg. Price Basis)	27	17	27
Unchanged Issue (Avg. Price Basis)	4	1	4
Market Cap. Equity (Billion Tk.)	1,804.25	1,747.86	1,804.25
Market Cap. Equity (Billion US\$)	21.87	21.19	21.87

**Combined Turnover Leaders**

Company	Volume (Share)	Value (M. Taka)	% of Total	Average Price
Meghna Petroleum -A	1151167	251.95	5.98	218.86
Jamuna Oil -A	775438	198.71	4.72	256.25
BD Submarine Cable-N	1976700	186.05	4.42	94.12
Unique Hotel RL - N	1967600	179.62	4.27	91.29

**Turnover Leaders**

**Dhaka Stock Exchange**

Company	Vol. Share	Value (M.Tk.)	% of Total	Price Scale				C.Avg BookV			
				Chn	PW	Clo	W Hi	W Lo	Avg.	Per S	EPS
Meghna Petroleum -A	1114854	244.007	6.46	-218.87	220.10	222.00	200.00	3.77	32.27	14.15	15.47
Jamuna Oil -A	756638	193.917	5.13	-256.29	254.00	260.00	238.00	2.88	40.19	14.45	17.74

**Market Cap. Leader**

**Dhaka Stock Exchange**

Company	Market Cap. M. Tk.	% of Total	Average			Price Scale			BookV			
			Price	Chn	P W	W Hi	W Lo	W Clo	Chn%	Per S	EPS	PE
Grameenphone-A	260,432	14.43	192.87	2.43	188.29	194.8	180	192.6	1.9	28.8	13.99	13.79
Titas Gas TDCLA	72,534	4.02	76.99	4.03	74.01	77.7	75.5	76.6	2.13	29.98	9.74	7.90

**Chittagong Stock Exchange**

Company	Vol. Share	Value (M.Tk.)	% of Total	Price Scale				C.Avg BookV				
				Chn	PW	Clo	W Hi	W Lo	Avg.	Per S	EPS	PE
Unique Hotel RL - N	486100	43.999	10.15	8000	90.51	89.80	93.00	87.00	5.28	60.65	4.09	22.13
UNITEED AIR-A	1618242	26.503	6.11	4500	16.38	16.40	16.90	15.80	5.13	12.64	0.71	23.07

**Chittagong Stock Exchange**

Company	Market Cap. M. Tk.	% of Total	Average			Price Scale			BookV			
			Price	Chn	P W	W Hi	W Lo	W Clo	Chn%	Per S	EPS	PE
Grameenphone-A	260,432	14.43	192.87	2.43	188.29	194.8	180	192.6	1.9	28.8	13.99	13.79
Titas Gas TDCLA	72,430	4.14	76.88	4.07	73.87	78.4	76	76.2	1.6	29.98	9.74	7.89

**Sectoral Turnover Summary**

Sector	DSE		CSE		Total	
	Mill. (Tk)	%	Mill. Tk.	%	Mill. Tk.	%
Bank	394.63	10.45	58.17	13.42	452.80	10.75
NBFI	183.29	4.85	22.21	5.12	205.49	4.88
Investment	80.53	2.13	3.51	0.81	84.04	2.00
Engineering	266.22	7.05	26.65	6.15	292.87	6.95

**What you should know to buy or sell**

Investors follow many calculations of corporate performance when deciding if a stock is undervalued or overvalued. These range from the simple price-earnings ratio, or P/E, to far more technical ways of attempting to discern whether a stock is trending up or down. Here are some of the most common.

**RSI (Relative Strength Index):** A technical momentum indicator that compares the size of recent gains to recent losses, in an attempt to determine overbought and oversold conditions of an asset. Stocks with more or strong gains have a higher RSI than stocks that had more or stronger losses.

**SMA (Simple Moving Average):** A simple, or arithmetic, moving average is the average stock price over a certain period of time. It adds up the closing price of the security for a given period and then divides the total by the number of intervals. Short-term averages respond quickly to changes in the price of the stock, so appear less steady, while long-term averages are slow to react.

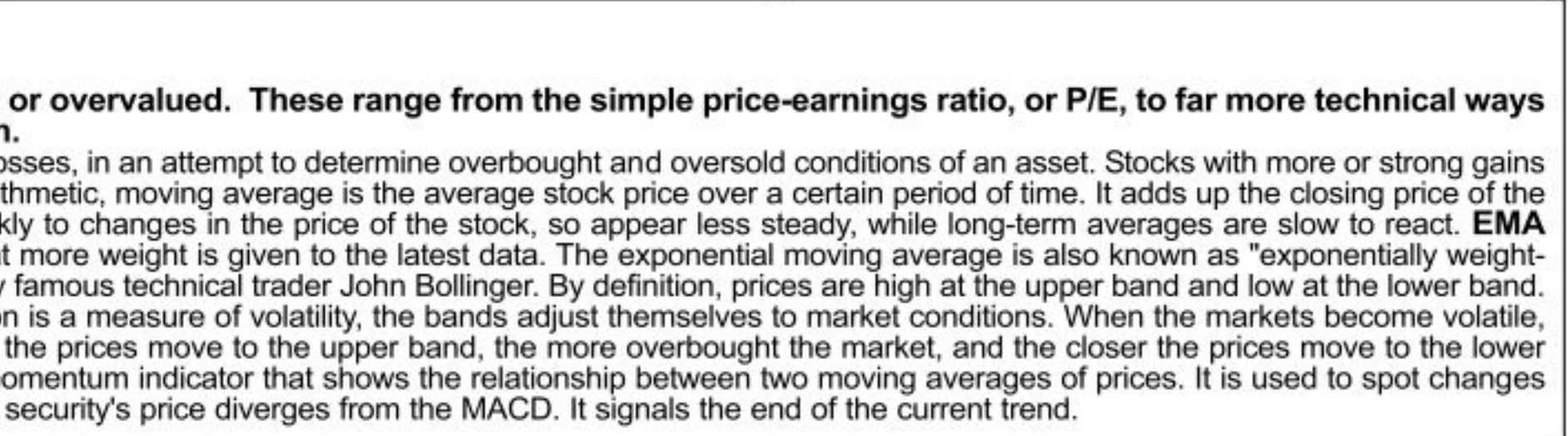
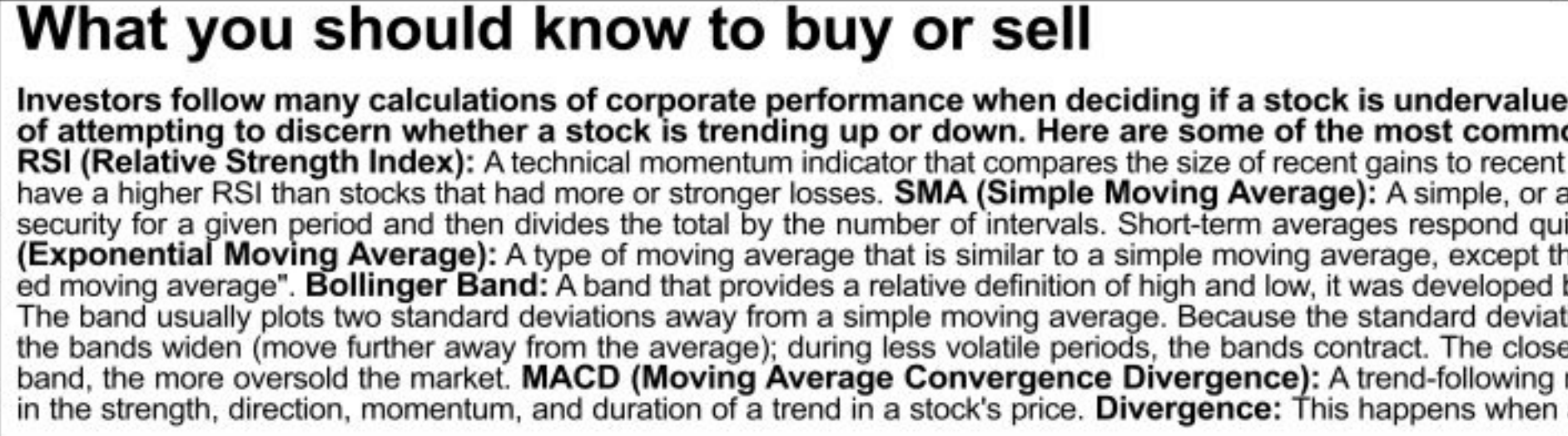
**EMA (Exponential Moving Average):** A type of moving average that is similar to a simple moving average, except that more weight is given to the latest data. The exponential moving average is also known as "exponentially weighted moving average".

**Bollinger Band:** A band that provides a relative definition of high and low, it was developed by famous technical trader John Bollinger. By definition, prices are high at the upper band and low at the lower band. The band usually plots two standard deviations away from a simple moving average. Because the standard deviation is a measure of volatility, the bands adjust themselves to market conditions. When the markets become volatile, the bands widen (move further away from the average); during less volatile periods, the bands contract. The closer the prices move to the upper band, the more overbought the market, and the closer the prices move to the lower band, the more oversold the market.

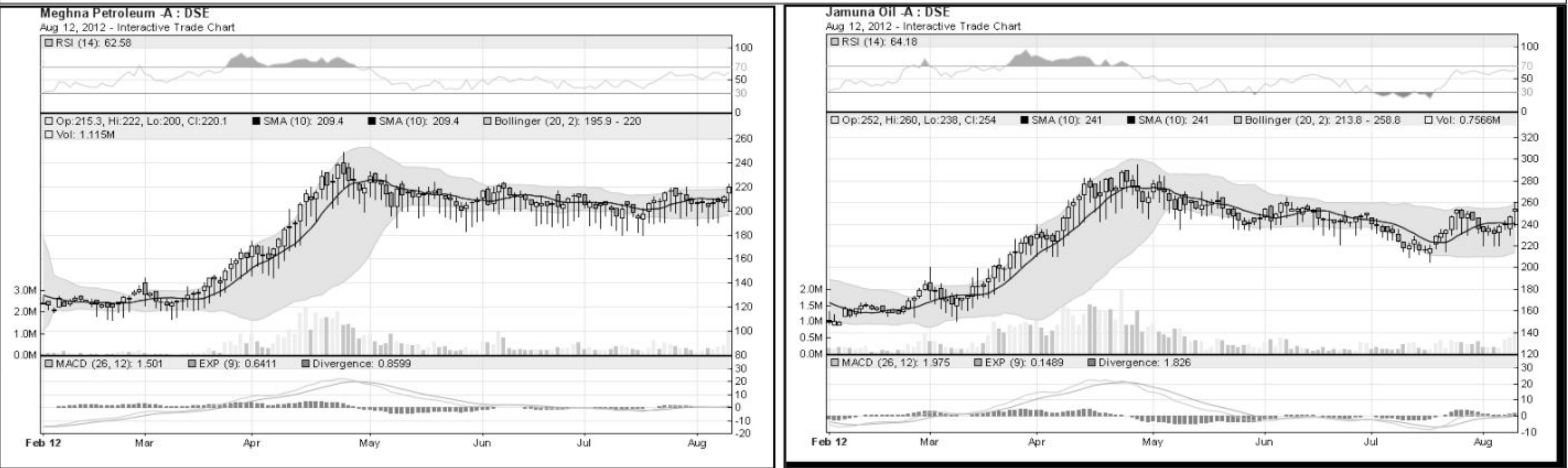
**MACD (Moving Average Convergence Divergence):** A trend-following momentum indicator that shows the relationship between two moving averages of prices. It is used to spot changes in the strength, direction, momentum, and duration of a trend in a stock's price. **Divergence:** This happens when a security's price diverges from the MACD. It signals the end of the current trend.

**Sectoral P/E & EPS**

Sector	P/E		EPS (%)	
	DSE	CSE	DSE	CSE
Bank	8.07	8.05	32.47	32.47
NBFI	16.96	17.41	36.44	37.20
Investment	6.18	6.26	16.49	16.49
Engineering	17.29	17.30	43.44	41.57
Food & Allied	17.89	17.65	108.64	110.18



Prepared exclusively for Daily Star by Business Information Automation Service Line (BIASL) on the basis of information collected from daily stock quotations and audited reports of the listed companies. High level of caution has been taken to collect and present the above information and data. The publisher will not take any responsibility if any body uses this information and data for his/her investment decision. For any query please email to biasl@bol-online.com or call 01552153562 or go to www.biasl.net



Notes: Capital Gainer / Loser tables are prepared on the basis of the close price change of the traded issues. "Close" or "C Price" or "W Clo." is the Closing Price of the Week. "Chn%" indicates the price difference in percentage. "Avg" prices indicate weighted average prices of all transactions of the last day of the week. "Yr Hi" and "W Lo" indicate the highest and lowest transacted price of the Week. "Yr Hi" and "Yr Lo" indicate the highest and lowest transacted price last one running year, everyday the range moves by one day. "P W"=Previous Week. EPS is based on available latest audited accounts of the companies. EPS & Book value per share are diluted at bookclosing date whenever it is applicable. Only the positive earning companies are considered in calculating the PER and EPS of the Sectors and Stock Exchanges.