

Capital Market Highlights:

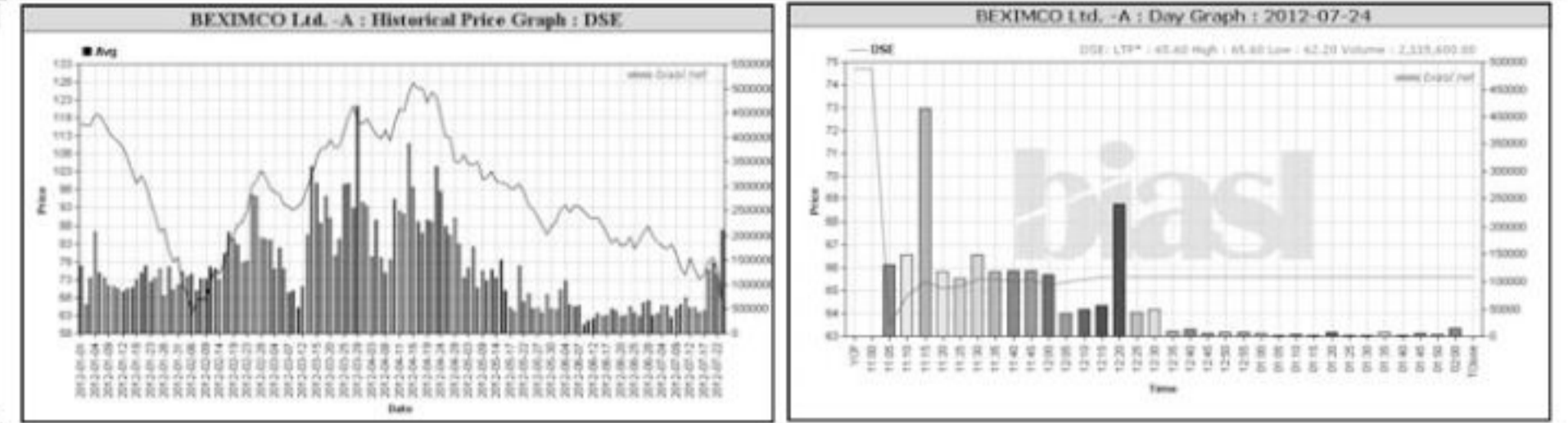
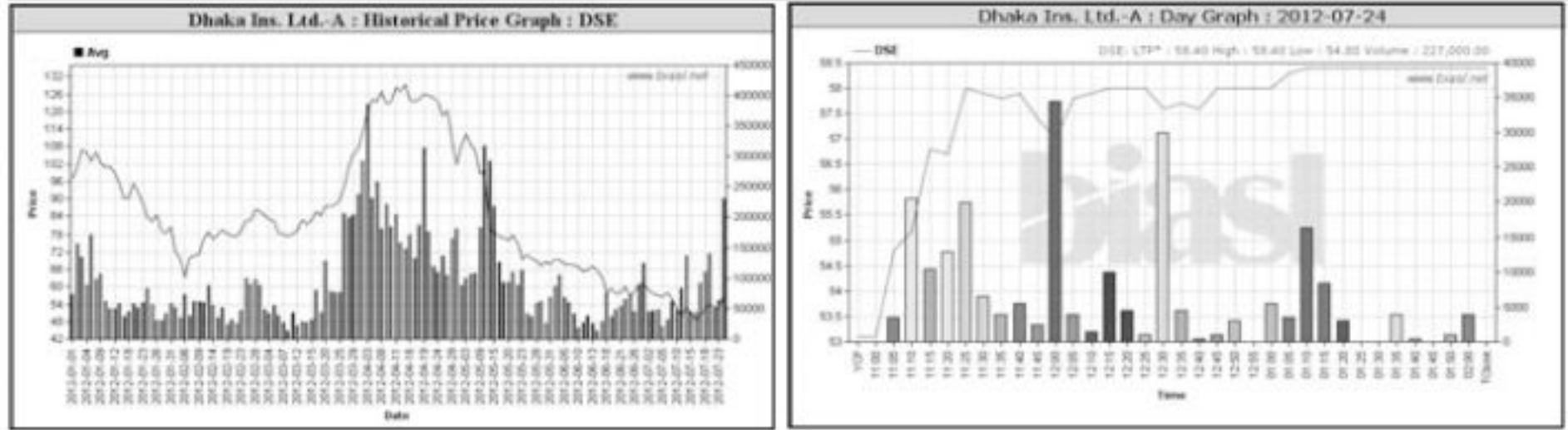
INDEX July 24 2012. Includes DSE General Index (+2.66%), DSE 20 (+1.46%), CSE All Share (+2.30%), CSE CSCX (+2.37%), CSE 30 (+2.46%). Turnover: DSE 38.87% Tk2892.59m, CSE 48.62% Tk391.54m. Market Cap: DSE 2.65% Tk1846.43b, CSE 2.70% Tk1726.04b.

Capital Gainers

Dhaka Stock Exchange table listing companies like Dhaka Ins. Ltd.-A, aamra technologies-N, BD Finance-A, etc., with columns for Price Chn. (%), Price Scale, Turnover, and BookV.

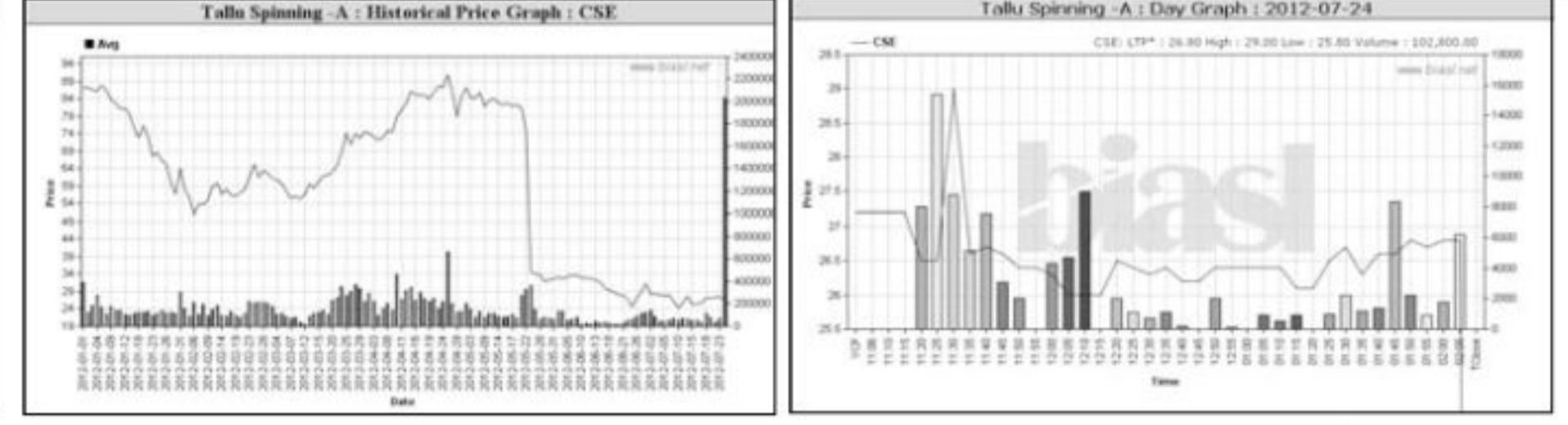
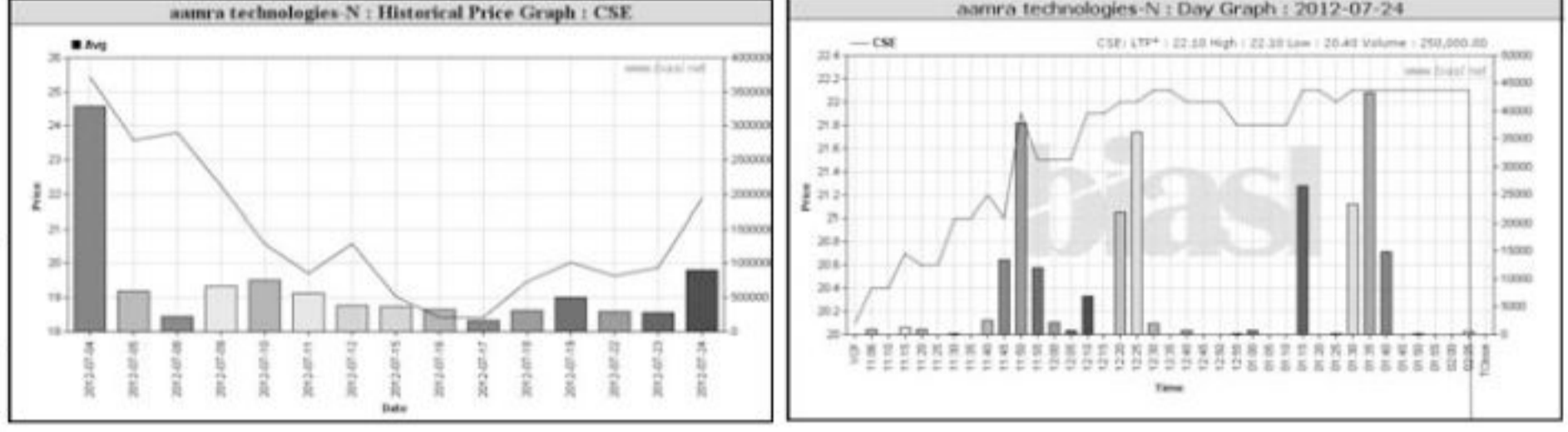
Capital Losers

Dhaka Stock Exchange table listing companies like BEXIMCO Ltd.-A, EBL NRB M.F.-A, Tallu Spinning -A, etc., with columns for Price Chn. (%), Price Scale, Turnover, and BookV.



Chittagong Stock Exchange table listing companies like aamra technologies-N, Beach Hatchery -A, Dhaka Ins. Ltd.-A, etc., with columns for Price Chn. (%), Price Scale, Turnover, and BookV.

Chittagong Stock Exchange table listing companies like BEXIMCO Ltd.-A, Tallu Spinning -A, Eastern Cables-A, etc., with columns for Price Chn. (%), Price Scale, Turnover, and BookV.



Key Features - July 24, 2012

Table showing indicators: Turnover (Million Taka), Turnover (Volume), No. of Contract, Traded Issues, Issue Gain, Issue Loss, Unchanged Issue, Market Cap. Equity.

Combined Turnover Leaders

Table listing companies and their turnover leaders: BEXIMCO Ltd.-A, Grameenphone-A, BD Submarine Cable-N, LafargeS Cement-Z, etc.

Sectoral Turnover Summary

Table showing turnover summary by sector: Bank, NBFI, Investment, Engineering, Food & Allied, Fuel & Power, etc.

Sectoral P/E & EPS

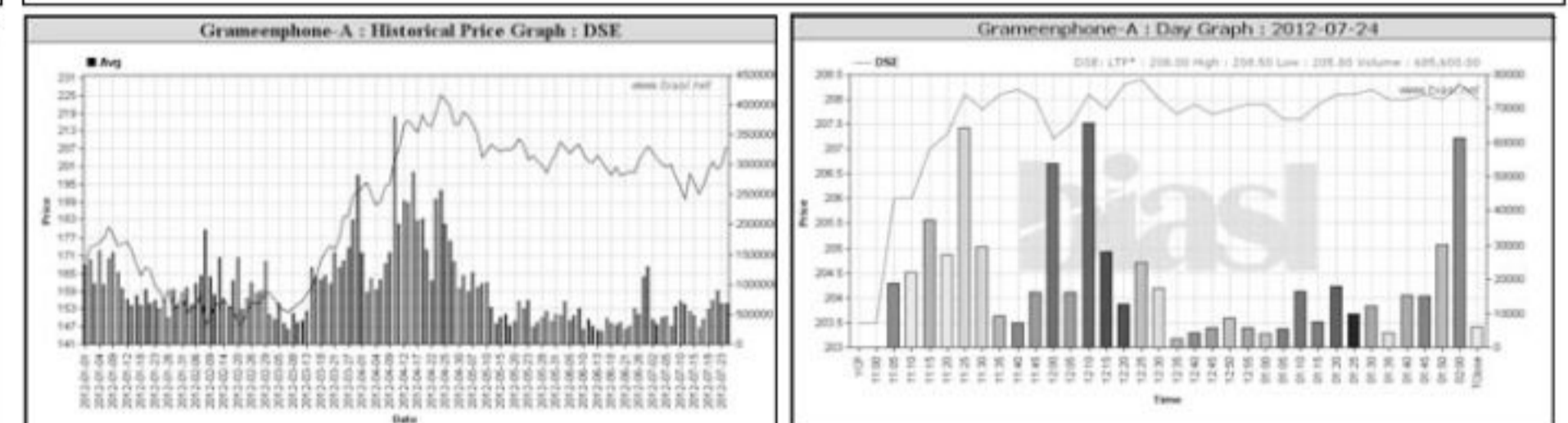
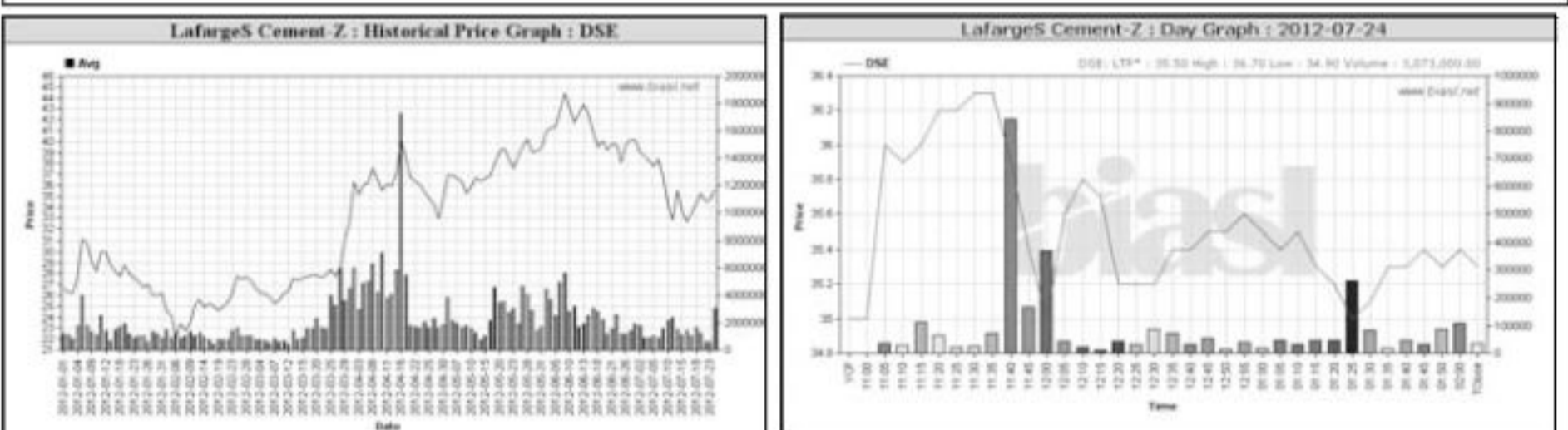
Table showing P/E and EPS by sector: Bank, NBFI, Investment, Engineering, Food & Allied, Fuel & Power, etc.

Turnover Leaders

Dhaka Stock Exchange table listing turnover leaders: Grameenphone-A, BEXIMCO Ltd.-A, BD Submarine Cable-N, LafargeS Cement-Z, etc.

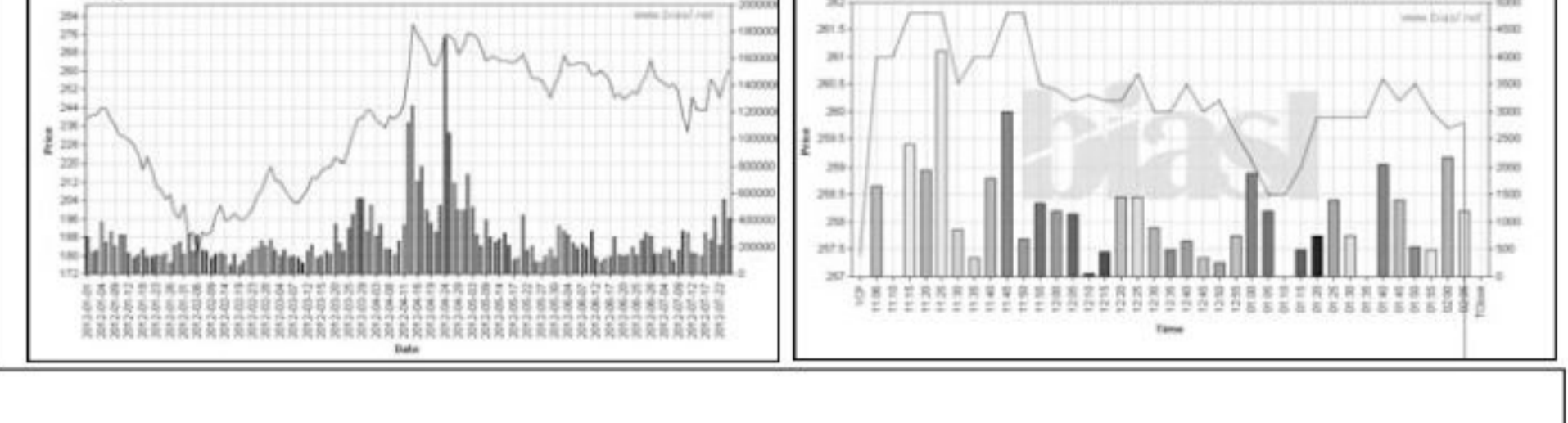
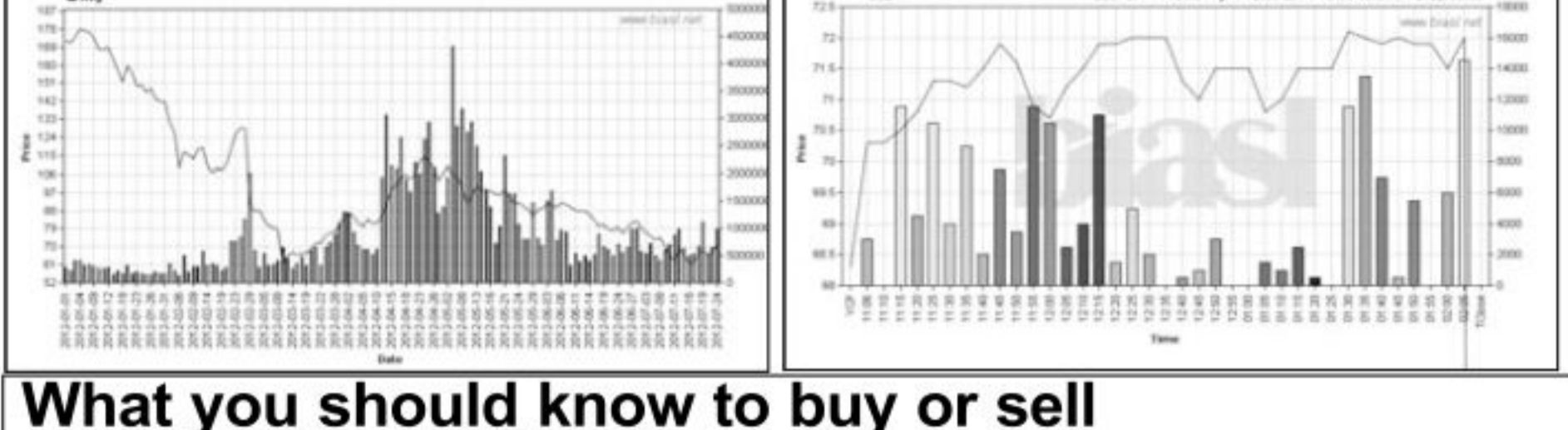
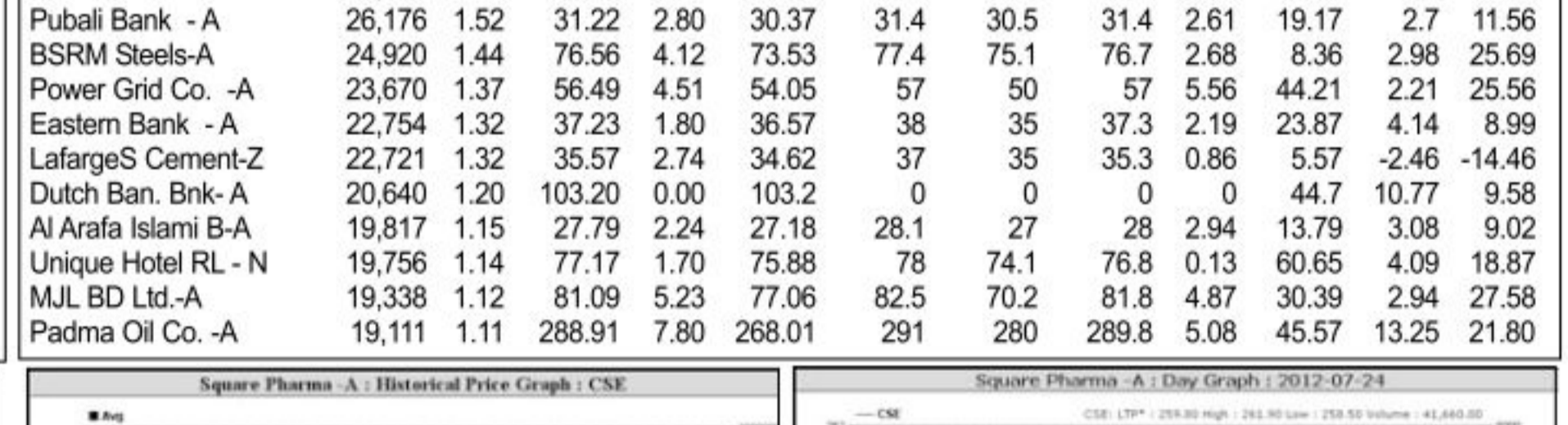
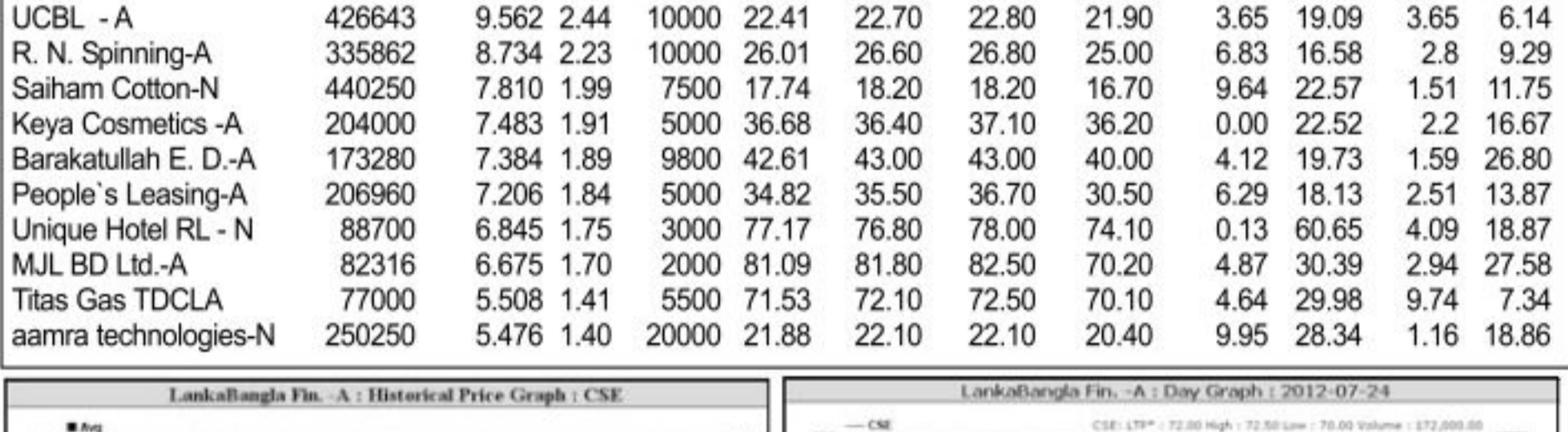
Market Cap. Leader

Dhaka Stock Exchange table listing market cap leaders: Grameenphone-A, Square Pharma -A, Titas Gas TDCLA, ICB -A, etc.



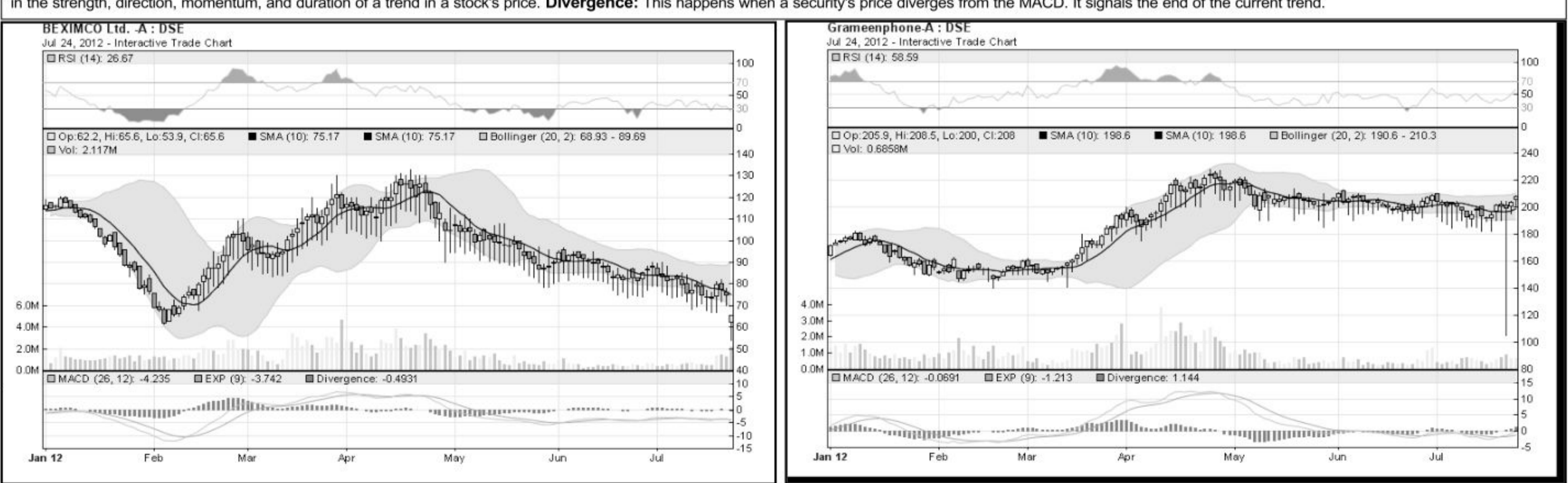
Chittagong Stock Exchange table listing turnover leaders: BEXIMCO Ltd.-A, Grameenphone-A, Square Pharma -A, Titas Gas TDCLA, etc.

Chittagong Stock Exchange table listing market cap leaders: Grameenphone-A, Square Pharma -A, Titas Gas TDCLA, ICB -A, etc.



What you should know to buy or sell

Investors follow many calculations of corporate performance when deciding if a stock is undervalued or overvalued. These range from the simple price-earnings ratio, or P/E, to far more technical ways of attempting to discern whether a stock is trending up or down.



Notes: Capital Gainer / Loser tables are prepared on the basis of the close price change of the traded issues. 'Close' or 'C Price' or 'W Clo.' is the Closing Price of the Week. 'Chn %' indicates the price difference in percentage.