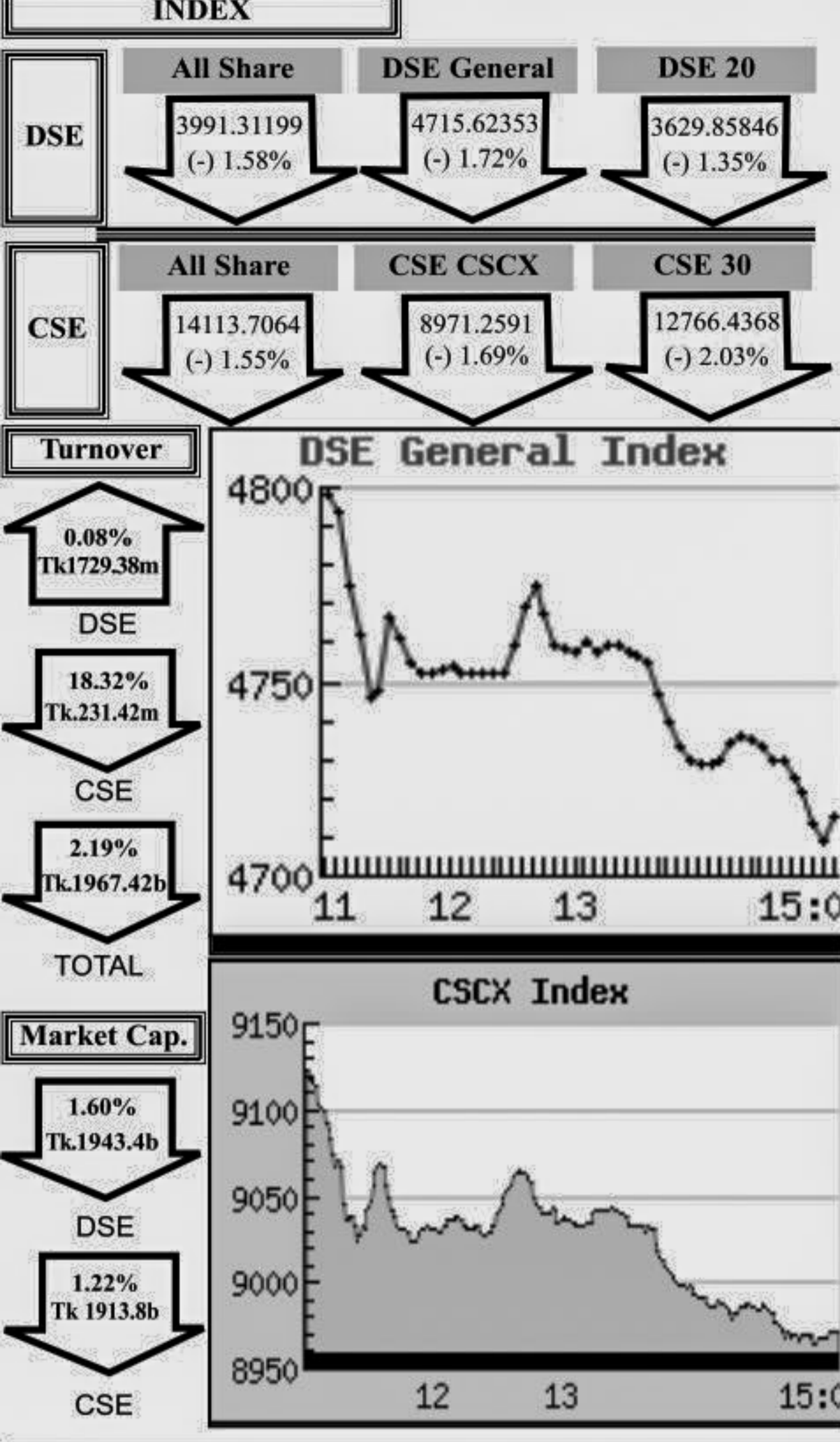


### Capital Market Highlights: May 27, 2012



### Key Features - May 27, 2012

Indicators	DSE	CSE	TOTAL
Turnover (Million Taka)	1,729.38	231.42	1,960.80
Turnover (Volume)	37,509,220	5,095,368	42,604,588
No. of Contract	54,098	9,477	63,575
Traded Issues	257	175	257
Issue Gain (Avg. Price Basis)	22	13	22
Issue Loss (Avg. Price Basis)	231	160	231
Unchanged Issue (Avg. Price Basis)	4	1	4
Market Cap. Equity (Billion Tk.)	1,943.36	1,913.81	1,943.36
Market Cap. Equity (Billion US\$)	25.08	24.69	25.08

### Combined Turnover Leaders

Company	Volume (Share)	Value (M. Taka)	% of Total	Average Price
LafargeS Cement-Z	5144000	203.69	10.39	39.6
Grameenphone-A	441992	89.59	4.57	202.69
LankaBangla Fin. -A	908301	81.82	4.18	90.09
BEXIMCO Ltd. -A	699715	63.10	3.22	90.18
People's Leasing-A	1215977	58.79	3.00	48.35
National Bank -A	1661236	52.20	2.66	31.42
Jamuna Oil -A	207886	50.95	2.60	245.1
Meghna Petroleum -A	211370	43.69	2.23	206.71
M.I. Cement-A	370535	41.72	2.13	112.6
UNITED AIR-A	2265489	38.72	1.98	17.09
Summit Power -A	627937	38.00	1.94	60.52
Aftab Auto.-A	264444	36.79	1.88	139.11
Fareast Islami Life -A	171788	34.84	1.78	202.83
Islami Bank BD -A	708954	31.24	1.59	44.07
UCBL -A	1117067	31.00	1.58	27.75
Titas Gas TDCLA	451200	30.21	1.54	66.95
Padma Oil Co. -A	59950	29.68	1.51	495.1
Shahjalal Islami -A	1167191	28.22	1.44	24.18
Padma Islami Life*-N	222500	28.16	1.44	126.55
R. N. Spinning-A	877436	26.40	1.35	30.08
Square Pharma -A	103050	26.26	1.34	254.82
Southeast Bank-A	1058059	23.33	1.19	22.05
MJL BD Ltd.-A	254257	22.27	1.14	87.59
Beacon Pharma Ltd.-B	1044050	21.21	1.08	20.31
Beximco Pharma -A	308991	20.11	1.03	65.1
Social Islami. B-A	965956	19.82	1.01	20.51
GPH Ispat Ltd-N	252000	19.15	0.98	76
AB Bank -A	393922	18.11	0.92	45.97
DESCO Ltd. -A	189500	17.21	0.88	90.81
Khulna Power-A	293783	16.78	0.86	57.12

### Sectoral Turnover Summary

Sector	DSE		CSE		Total	
	Mill. (Tk.)	%	Mill. Tk.	%	Mill. Tk.	%
Bank	329.50	19.05	42.87	18.01	372.37	18.93
NBFI	185.96	10.75	44.89	18.86	230.85	11.73
Investment	21.03	1.22	2.22	0.93	23.25	1.18
Engineering	118.72	6.86	18.55	7.79	137.27	6.98
Food & Allied	25.64	1.48	2.19	0.92	27.83	1.41
Fuel & Power	250.24	14.47	17.21	7.23	267.46	13.59
Jute	0.29	0.02			0.29	0.01
Textile	76.03	4.40	10.83	4.55	86.86	4.42
Pharma & Chemical	109.82	6.35	11.28	4.74	121.10	6.16
Paper & Packaging	0.01	0.00	2.20	0.92	2.21	0.11
Service	12.68	0.73	3.63	1.53	16.32	0.83
Leather	2.61	0.15	2.33	0.98	4.94	0.25
Ceramic	15.82	0.91	0.89	0.37	16.71	0.85
Cement	245.07	14.17	26.44	11.11	271.50	13.80
Information Technology	7.21	0.42	1.09	0.46	8.30	0.42
General Insurance	74.85	4.33	3.30	1.39	78.15	3.97
Life Insurance	84.41	4.88	7.18	3.02	91.58	4.66
Telecom	73.97	4.28	15.61	6.56	89.59	4.55
Travel & Leisure	31.11	1.80	7.61	3.20	38.72	1.97
Miscellaneous	63.60	3.68	17.57	7.38	81.16	4.13
Debtenture	0.83	0.05	0.11	0.05	0.94	0.05

### Sectoral P/E & EPS

Sector	P/E		EPS(%)	
	DSE	CSE	DSE	CSE
Bank	9.67	9.63	32.20	32.20
NBFI	21.26	21.99	36.13	36.87
Investment	6.16	6.29	16.80	16.80
Engineering	19.27	19.57	43.63	41.74
Food & Allied	16.61	16.67	109.60	111.17
Fuel & Power	12.62	12.58	65.29	65.30
Textile	9.80	9.36	23.64	23.57
Pharma. & Chemical	22.79	22.60	59.10	50.17
Paper & Printing	19.26	20.61	12.41	13.27
Service	23.46	23.96	21.85	21.85
Leather	12.11	12.55	111.74	138.13
Ceramic	25.54	25.31	20.65	20.65
Cement	24.48	24.35	54.73	54.73
IT	17.46	17.34	12.27	12.27
General Insurance	26.02	26.56	20.25	20.37
Life Insurance	24.76	24.91	77.27	77.27
Telecom	14.49	14.50	139.90	139.90
Travel & Leisure	16.67	24.03	9.85	7.10
Miscellaneous	4.50	4.49	174.36	169.50
Stock Exchanges	13.01	12.91	41.90	41.67

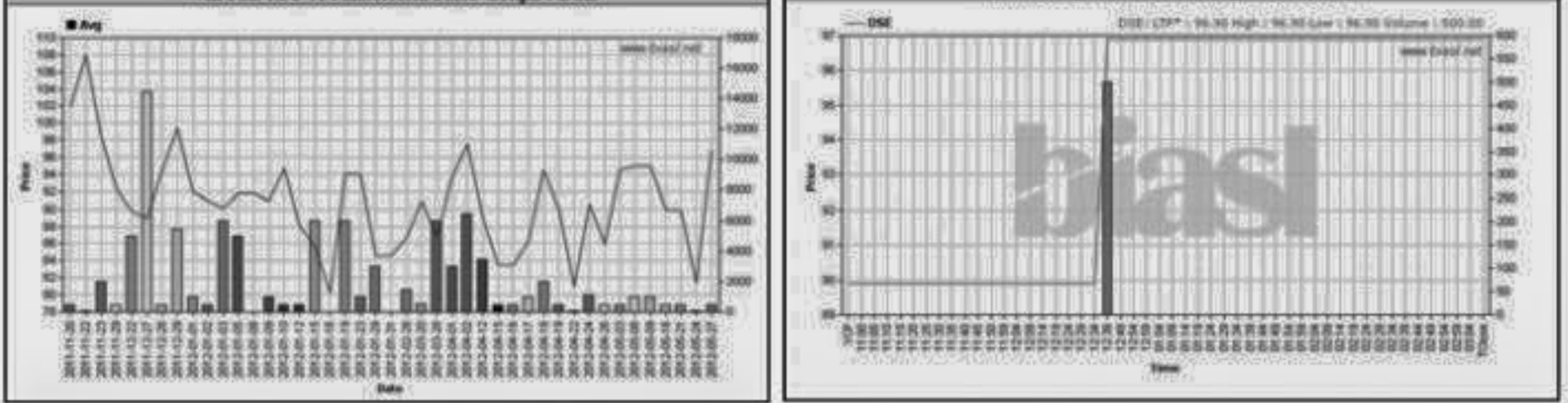
All the above PE and EPS are estimated to get a relative idea only and not calculated by any of the stock exchanges.

Prepared exclusively for Daily Star by Business Information Automation Service Line (BIASL), on the basis of information collected from daily stock quotations and audited reports of the listed companies. High level of caution has been taken to collect and present the above information and data. The publisher will not take any responsibility if any body uses this information and data for his/her investment decision. For any query please email to biasl@bol-online.com or call 01552153562 or go to www.biasl.net

### Capital Gainers

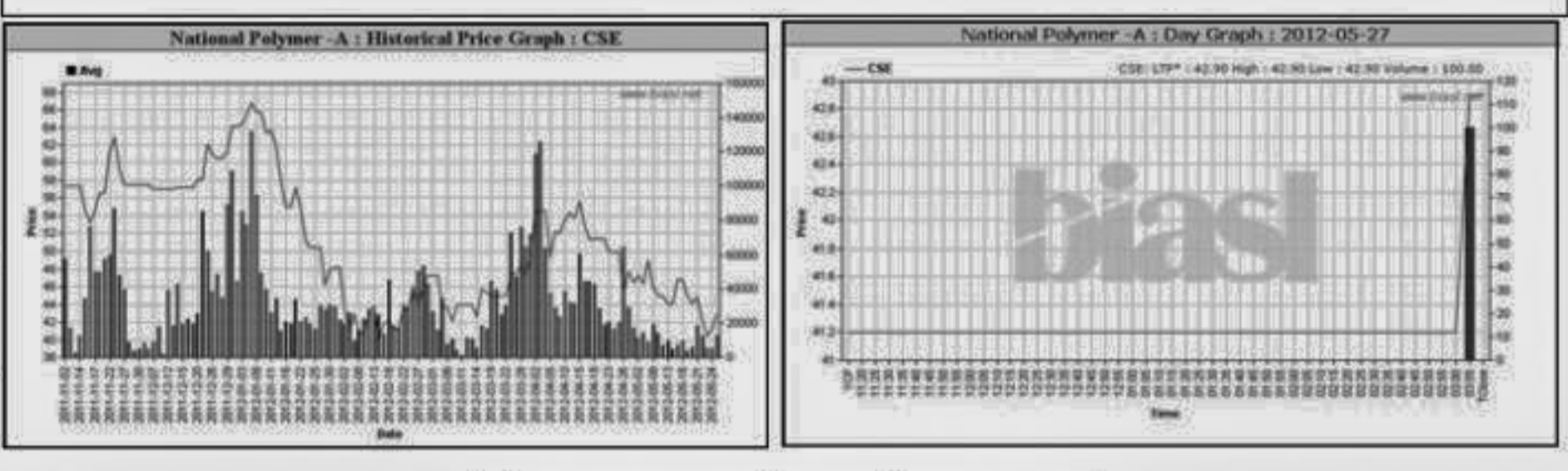
#### Dhaka Stock Exchange

Company	Price Chn. (%)		Price Scale				Turnover		BookV			
	Close	Avg.	Avg. Close	DayHi	DayLo	Yr Hi	YrLo	M.Tk	Per S	EPS	PE	
7th ICB M.F-A	7.79	19.04	96.90	96.90	96.90	134.9	80.3	0.048	32.05	13.47	7.19	
Imam Buton-Z	5.04	4.79	14.67	14.60	14.70	14.20	44.4	12.8	0.132	7.35	-1.74	-8.43
Pragati Gen. I-A	3.25	1.00	78.09	79.50	80.00	75.00	103.6	54.5	3.686	52.13	2.15	36.32
Eastern Cables-A	2.82	2.97	58.57	58.30	59.00	57.00	72.9	48.3	0.082	38.26	0.68	86.13
LafargeS Cement-Z	2.33	2.49	39.59	39.60	40.10	38.40	68.4	21.6	184.732	5.57	-2.46	-16.09
ICB AMCL 1st M-F-A	1.69	1.69	42.20	42.20	42.20	42.20	71.5	32.1	0.021	21.76	7.38	5.72
Prime Islami Life-Z	1.37	1.28	192.44	192.10	194.50	188.20	345.7	150.3	1.299	27.1	5.51	34.93
ICB Islamic Bank-Z	1.25	(0.25)	8.05	8.10	8.20	7.80	14.6	6.6	1.247	-11.44	-2.7	-2.98
GeminiSeaFoodA	1.15	1.11	202.22	202.30	204.00	199.00	329.6	168.0	0.091	0.3	9.48	21.33
LR Global BD MF1-A	1.02	2.56	10.00	9.90	10.00	9.80	11.0	9.0	0.020	0	0	-



### Chittagong Stock Exchange

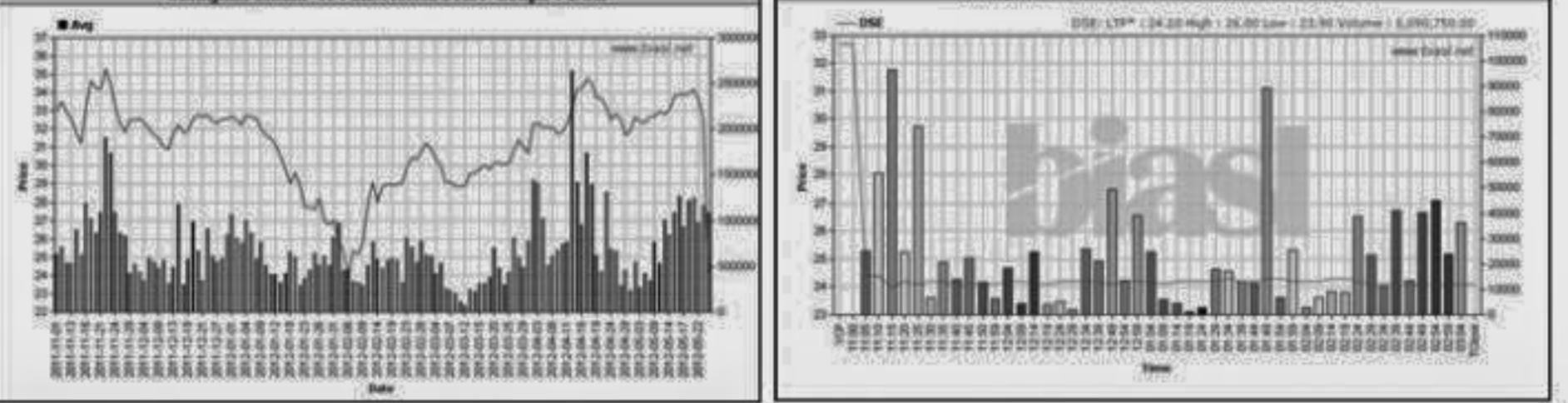
Company	Price Chn. (%)		Price Scale				Turnover		BookV			
	Close	Avg.	Avg. Close	DayHi	DayLo	Yr Hi	YrLo	M.Tk	Per S	EPS	PE	
AMCL 2nd MF-A	6.49	0.65	7.75	8.20	8.20	7.30	15.5	7.0	0.008	12.12	1.81	4.28
National Polymer -A	4.13	4.13	42.90	42.90	42.90	42.90	94.2	38.8	0.004	38.04	2.22	19.32
LafargeS Cement-Z	3.09	2.96	39.70	40.00	40.20	38.10	31.4	31.4	18.955	5.57	-2.46	-16.14
Alltex Industries-Z	2.27	0.56	9.00	9.00	9.00	9.00	17.1	17.1	0.005	24.74	0.1	90.00
Legacy Footwear -A	1.92	1.84	26.50	26.50	26.50	26.50	57.0	23.7	0.013	16.82	1.23	21.54
Prime Islami Life-Z	1.64	1.64	180.00	180.00	180.00	180.00	348.6	157.0	0.009	27.1	5.51	32.67
Peoples Insur -A	1.37	1.03	29.46	29.50	29.80	28.70	60.0	25.0	0.153	18.67	0.2	147.30
Monno Ceramic -A	1.16	1.16	43.50	43.50	43.50	43.50	95.7	35.1	0.022	18.47	1.49	29.19
IBBLMPB-A	0.22	0.05	900.48	902.00	902.00	871.00	1068.0	847.0	0.104	1000	0	-



### Capital Losers

#### Dhaka Stock Exchange

Company	Price Chn. (%)		Price Scale				Turnover		BookV			
	Close	Avg.	Avg. Close	DayHi	DayLo	Yr Hi	YrLo	M.Tk	Per S	EPS	PE	
Shahjalal Islami -A	-26.30	-25.68	24.17	24.10	26.00	23.50	44.7	23.3	26.370	14.22	2.1	11.51
CMC Kamal Tex. -A	-14.79	-12.88	27.05	26.50	28.90	26.00	71.8	25.5	14.798	20.63	1.32	20.49
Samata Leather-Z	-6.13	-8.04	15.33	15.30	15.60	15.20	26.5	10.1	0.046	12.04	-0.13	-117.92
Savar Refractories-B	-5.65	-6.67	60.00	60.10	60.30	60.00	91.5	44.8	0.042	11.59	1.17	51.78
Beach Hatchery-A	-5.23	-4.65	29.29	29.00	30.30	28.90	67.0	27.2	6.180	13.88	1.98	14.29
ApexAdelchi Ftr -A	-5.14	-5.04	258.42	258.40	274.00	252.00	354.0	192.0	0.982	180.5	23.2	11.14
Jute SpinnersA	-4.93	-4.31	91.18	90.60	92.80	90.00	179.0	90.0	0.155	56.59	4.87	18.72
Jute SpinnersA	-4.92	-4.85	41.24	40.60	42.50	40.30	92.9	35.6	3.461	21.55	1.29	31.77
BD Finance-A	-4.87	-4.55	37.59	37.10	38.30	35.10	123.0	35.1	2.265	15.98	0.33	113.91
IFIC Bank -A	-4.82	-3.65	46.24	45.40	47.50	45.00	96.8	37.4	7.273	18.92	2.4	19.27



### Chittagong Stock Exchange

Company	Price Chn. (%)		Price Scale				Turnover		BookV			
	Close	Avg.	Avg. Close	DayHi	DayLo	Yr Hi	YrLo	M.Tk	Per S	EPS	PE	
Shahjalal Islami -A	-26.30	-25.58	24.24	24.10	25.00	24.00	112.0	12.0	1.849	14.22	2.1	11.54
Umanisa Glass -A	-9.31	-7.14	96.44	96.40	96.60	96.00	155.3	78.0	0.024</			