

Capital Market Highlights: May 23, 2012

INDEX		
DSE	All Share 4078.08211 (-) 1.50%	DSE General 4828.77030 (-) 1.57%
CSE	All Share 14366.7109 (-) 1.66%	CSE CSCX 9147.3462 (-) 1.75%
		CSE 30 13090.0969 (-) 1.73%

Turnover		
DSE	5.00%	Tk.2748.29m
CSE	4.30%	Tk.370.33m
TOTAL	4.91%	Tk.3118.64m

Market Cap.		
DSE	1.42%	Tk.1986.0b
CSE	1.93%	Tk.1947.4b

Key Features - May 23, 2012

Indicators	DSE	CSE	TOTAL
Turnover (Million Taka)	2,748.29	370.33	3,118.62
Turnover (Volume)	53,742,286	7,458,747	61,201,033
No. of Contract	81,853	14,539	96,392
Traded Issues	262	186	262
Issue Gain (Avg. Price Basis)	13	7	13
Issue Loss (Avg. Price Basis)	248	177	248
Unchanged Issue (Avg. Price Basis)	1	2	1
Market Cap. Equity (Billion Tk.)	1,985.98	1,947.42	1,985.98
Market Cap. Equity (Billion US\$)	25.63	25.13	25.63

Combined Turnover Leaders

Company	Volume (Share)	Value (M. Taka)	% of Total	Average Price
LankaBangla Fin. -A	1892345	172.91	5.54	91.38
Gramenphone-A	813659	165.48	5.31	203.37
LafargeS Cement-Z	3405500	127.95	4.10	37.57
BEXIMCO Ltd. -A	1099098	102.78	3.30	93.51
Meghna Petroleum -A	427460	89.34	2.86	209
Aftab Auto -A	590720	83.16	2.67	140.78
Jamuna Oil -A	281616	70.29	2.25	249.59
M.I. Cement-A	619990	68.99	2.21	111.27
Uttara Bank -A	1386614	68.38	2.19	49.32
People's Leasing-A	1282735	63.24	2.03	49.3
UNITED AIR-A	3259739	57.61	1.85	17.67
Square Pharma -A	221940	56.99	1.83	256.78
Padma Oil Co. -A	106437	53.83	1.73	505.75
UCBL -A	182780	52.81	1.69	28.2
GPH Ispat Ltd-N	655500	50.01	1.60	76.29
Islami Bank BD -A	1107565	49.10	1.57	44.34
National Bank -A	1475051	47.59	1.53	32.26
Keya Cosmetics -A	1023733	45.87	1.47	44.81
City Bank -A	1219877	45.50	1.46	37.3
Padma Islami Life*-N	337000	43.24	1.39	128.31
Summit Power -A	675840	41.95	1.35	62.08
Shahjalal Islami -A	1263235	41.09	1.32	32.53
Olympic Ind. -A	298320	40.10	1.29	134.42
Titas Gas TDCLA	586050	39.36	1.26	67.16
AB Bank -A	751754	34.91	1.12	46.44
BSRM Steels-A	371700	33.44	1.07	89.96
Active Fine Chem.-A	535325	32.58	1.04	60.86
Beximco Pharma -A	475398	32.37	1.04	68.09
R. N. Spinning-A	1023213	31.98	1.03	31.25
EXIM Bank-A	1653898	31.12	1.00	18.82

Sectoral Turnover Summary

Sector	DSE		CSE		Total	
	Mill. (Tk.)	%	Mill. Tk.	%	Mill. Tk.	%
Bank	542.05	19.72	72.31	19.53	614.36	19.70
NBFI	359.18	13.07	51.21	13.83	410.40	13.16
Investment	38.91	1.42	5.41	1.46	44.32	1.42
Engineering	251.51	9.15	48.27	13.03	299.78	9.61
Food & Allied	35.70	1.30	13.63	3.68	49.33	1.58
Fuel & Power	382.42	13.91	27.70	7.48	410.12	13.15
Jute	0.61	0.02			0.61	0.02
Textile	105.20	3.83	16.72	4.52	121.92	3.91
Pharma & Chemical	201.31	7.32	21.11	5.70	222.42	7.13
Paper & Packaging	0.15	0.01	3.70	1.00	3.84	0.12
Service	23.95	0.87	0.06	0.02	24.01	0.77
Leather	3.63	0.13	2.42	0.65	6.05	0.19
Ceramic	27.26	0.99	24.75	6.68	52.01	1.67
Cement	212.58	7.73	1.05	0.28	213.63	6.85
Information Technology	10.72	0.39	5.87	1.58	16.59	0.53
General Insurance	154.94	5.64	17.91	4.84	172.85	5.54
Life Insurance	106.08	3.86	17.83	4.82	123.91	3.97
Telecom	147.64	5.37	11.36	3.07	159.01	5.10
Travel & Leisure	46.25	1.68	29.02	7.84	75.27	2.41
Miscellaneous	94.57	3.44	0.00	0.00	94.57	3.03
Debtenture	3.65	0.13	0.00	0.00	3.65	0.12

Sectoral P/E & EPS

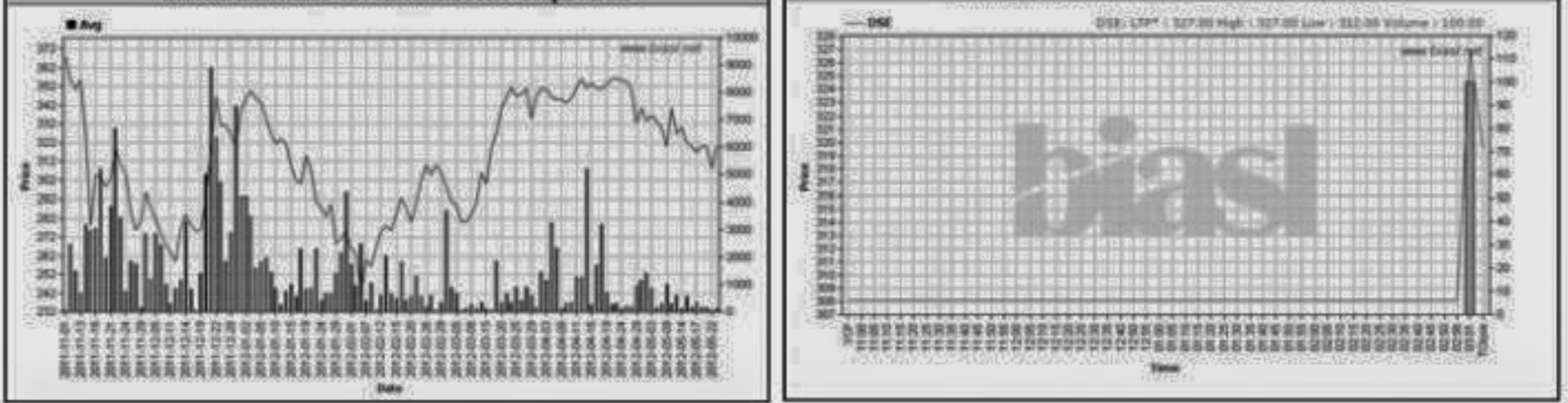
Sector	P/E		EPS(%)	
	DSE	CSE	DSE	CSE
Bank	9.83	9.78	32.41	32.41
NBFI	21.65	22.22	36.13	36.87
Investment	6.23	6.34	16.80	16.80
Engineering	19.64	19.87	43.63	41.74
Food & Allied	16.75	16.73	109.60	111.17
Fuel & Power	12.73	12.76	65.29	65.30
Textile	10.18	9.72	23.74	23.66
Pharma & Chemical	23.15	22.87	59.10	50.17
Paper & Printing	19.29	20.61	12.41	13.27
Service	23.74	23.60	21.85	21.85
Leather	12.19	12.64	111.74	138.13
Ceramic	25.74	25.67	20.65	20.65
Cement	24.48	25.01	54.73	54.73
IT	17.78	17.68	12.27	12.27
General Insurance	26.47	26.81	20.25	20.37
Life Insurance	24.74	24.83	77.27	77.27
Telecom	14.54	14.52	139.90	139.90
Travel & Leisure	17.17	24.96	9.85	7.10
Miscellaneous	4.65	4.66	174.36	169.50
Stock Exchanges	13.19	13.07	42.05	41.82

All the above PE and EPS are estimated to get a relative idea only and not calculated by any of the stock exchanges.

Prepared exclusively for Daily Star by Business Information Automation Service Line (BIASL), on the basis of information collected from daily stock quotations and audited reports of the listed companies. High level of caution has been taken to collect and present the above information and data. The publisher will not take any responsibility if any body uses this information and data for his/her investment decision. For any query please email to biasl@bol-online.com or call 01552153562 or go to www.biasl.net

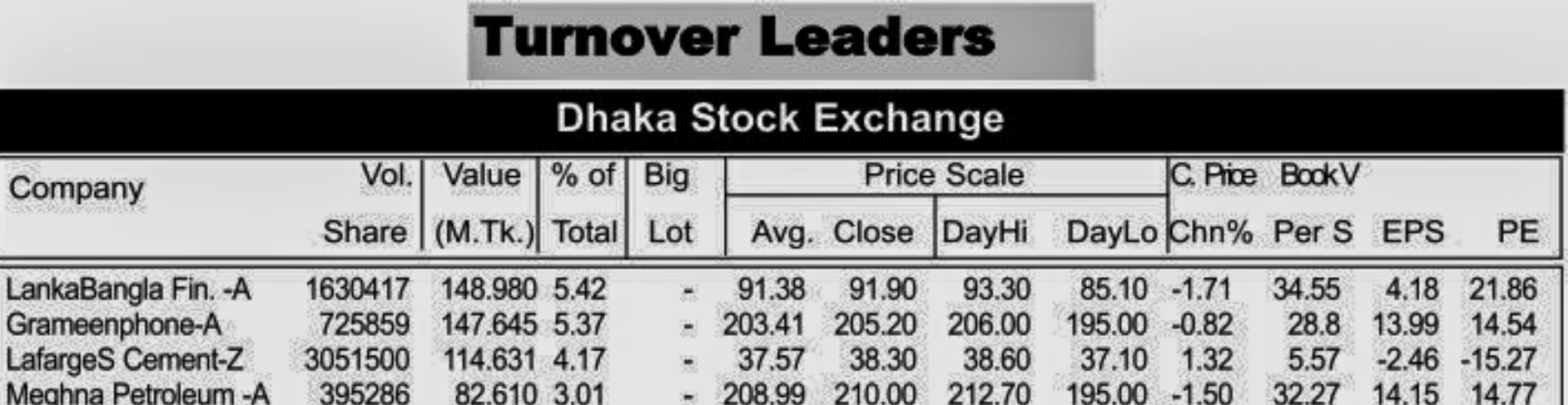
Capital Gainers

Dhaka Stock Exchange													
Company	Price Chn. (%)		Price Scale				Turnover		BookV				
	Close	Avg.	Avg.	Close	DayHi	DayLo	Yr Hi	YrLo	M.Tk	Per S	EPS	PE	
Eastern Lubricants -A	3.70	3.86	320.00	319.50	327.00	312.00	639.0	240.0	0.032	57	5	64.00	
Savar Refractories-B	3.06	3.06	64.00	64.00	64.00	64.00	91.5	44.8	0.003	11.59	1.17	54.70	
Dutch Ban. Bnk-A	3.04	1.66	124.04	125.30	127.00	110.00	183.0	83.1	21.789	44.7	10.77	11.52	
Republic Insu.-A	2.78	(0.28)	54.21	55.40	57.80	52.50	77.0	37.0	15.369	12.37	1.57	34.53	
Islamic Finance-A	2.61	(0.65)	38.31	39.30	39.80	34.50	57.0	23.7	17.520	12.61	0.36	106.42	
National Tea -A	2.59	2.68	690.00	690.00	690.00	690.00	735.0	474.0	0.069	83.5	8.1	85.19	
ApexAdelchi Fir -A	1.44	1.58	275.00	274.80	274.90	274.70	354.0	192.0	0.165	180.5	23.2	11.85	
First Security Bank-A	1.44	(0.71)	21.00	21.20	22.00	18.90	35.1	17.2	10.799	13.38	1.71	12.28	
LafargeS Cement-Z	1.32	(2.34)	37.57	38.30	38.60	37.10	68.4	21.6	114.631	5.7	-2.46	-15.27	
Sandhani Life -A	1.25	(3.24)	189.22	194.40	197.00	176.00	394.5	110.3	15.074	47.52	3.4	55.65	



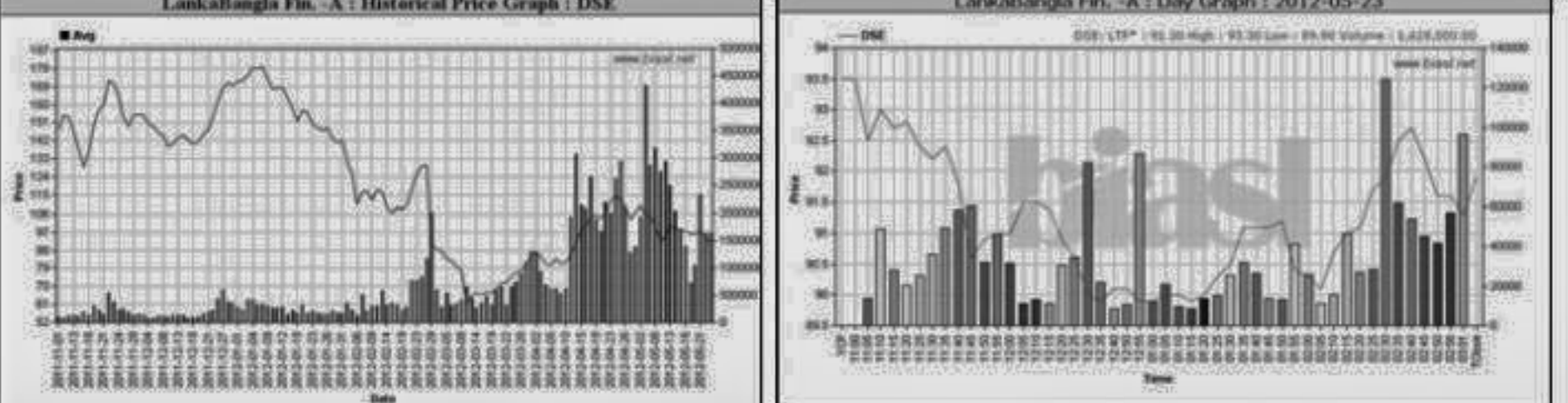
Chittagong Stock Exchange

Chittagong Stock Exchange													
Company	Price Chn. (%)		Price Scale				Turnover		BookV				
	Close	Avg.	Avg.	Close	DayHi	DayLo	Yr Hi	YrLo	M.Tk	Per S	EPS	PE	
Usmania Glass -A	6.41	6.36	106.25	106.30	108.50	104.00	155.3	78.0	0.053	28.89	0.14	758.93	
Samata Leather-Z	3.33	3.33	15.50	15.50	15.50	15.50	16.7	16.7	0.008	12.04	-0.13	-119.23	
Republic Insu.-A	2.78	1.13	54.59	55.50	56.60	53.00	54.2	54.2	0.355	12.37	1.57	34.77	
Pragati Gen. I -A	1.17	1.17	78.10	78.10	78.10	78.10	71.0	71.0	0.039	52.13	2.15	36.33	



Turnover Leaders

Dhaka Stock Exchange													
Company	Vol. Share	Value (M.Tk.)	% of Total	Price Scale				C.Pite	BookV				
				Avg. Close	DayHi	DayLo	Chn%						
LankaBangla Fin. -A	1630417	148,980	5.42	91.38	91.90	93.30	85.10	-1.71	34.55	4.18	21.86		
Gramenphone-A	725859	147,645	5.37	203.41	205.20	206.00	195.00	-0.82	28.8	13.99	14.54		
LafargeS Cement-Z	3051500	114,631	4.17	37.57	38.30	38.60	37.10	1.32	5.57	-2.46	-15.27		
Meghna Petroleum -A	395286	82,610	3.01	208.99	210.00	212.70	195.00	-1.50	32.27	14.15	14.77		
BEXIMCO Ltd. -A	806588	75,412	2.74	93.56	93.00	98.00	86.50	-3.23	118.71	23.73	3.94		
Jamuna Oil -A	273316	68,213	2.48	249.58	249.40	254.20	245.80	-2.08	40.19	14.45	17.27		
Aftab Auto -A	483340	68,025	2.48	140.74	142.70	145.00	130.00	-0.56	56.28	19.61	7.18		
Uttara Bank -A	1354239	66,776	2.43	49.31	49.20	54.60	46.00	-3.34	27.41	5.01	9.84		
M.I. Cement-A	526815	58,599	2.13	112.77	112.70	115.00	101.80	-0.35	62	5.36	20.76		
Square Pharma -A	206950	53,142	1.93	257.69	257.60	262.00	253.00	-1.64	49.95	9.56	26.86		
Padma Oil Co. -A	100370	50,801	1.85	506.14	506.70	514.50	474.00	-1.00	73.36	19.88	25.46		
People's Leasing-A	1019935	50,301	1.83	49.32	50.00	52.00	47.00	-2.15	18.51	2.63	18.75		
UNITED AIR-A	2618072	46,247	1.68	17.66	17.50	18.30	16.50	-2.78	12.64	0.71	24.87		
Meghna Petroleum -A	1000360	44,371	1.61	44.36	44.70	45.10	42.00	0.22	21.66	3.87	11.46		
Keya Cosmetics -A	919865	41,224	1.50	44.82	45.40	45.80	41.90	-0.44	22.52	2.2	20.37		
City Bank -A	1103942	41,180	1.50	37.30	37.30	40.00	34.30	-2.10	28.35	3.26	11.44		
National Bank -A	1265261	40,811	1.49	32.26	32.30	36.00	29.70	-2.12	15.16	4.28	7.54		
GPH Ispat Ltd-N	534000	40,746	1.48	76.30	77.00	77.80	74.90	-1.03	16.18	2.85	26.77		
UCBL -A	1433761	40,423	1.47	28.19	28.30	31.00	25.90	-1.05	19.09	3.65	7.72		
Summit Power -A	625339	38,818	1.41	62.08	62.50	63.50	57.60	-1.73	20.76	5.1	12.17		



Chittagong Stock Exchange

Chittagong Stock Exchange													
Company	Vol. Share	Value (M.Tk.)	% of Total	Price Scale				C.Pite	BookV				
				Avg. Close	DayHi	DayLo	Chn%						
BEXIMCO Ltd. -A	293040	27,368	7.39	93.39	92.80	96.00	91.70	-3.53	118.71	23.73	3.94		
LankaBangla Fin. -A	261928	23,933	6.46	90.00	91.37	92.30	89.70	-1.28	34.55	4.18	21.86		
Gramenphone-A	87800	17,833	4.82	280.00	203.11	204.00	200.00	-1.31	28.8	13.99	14.52		
Aftab Auto -A	107380	15,137	4.09	180.00									