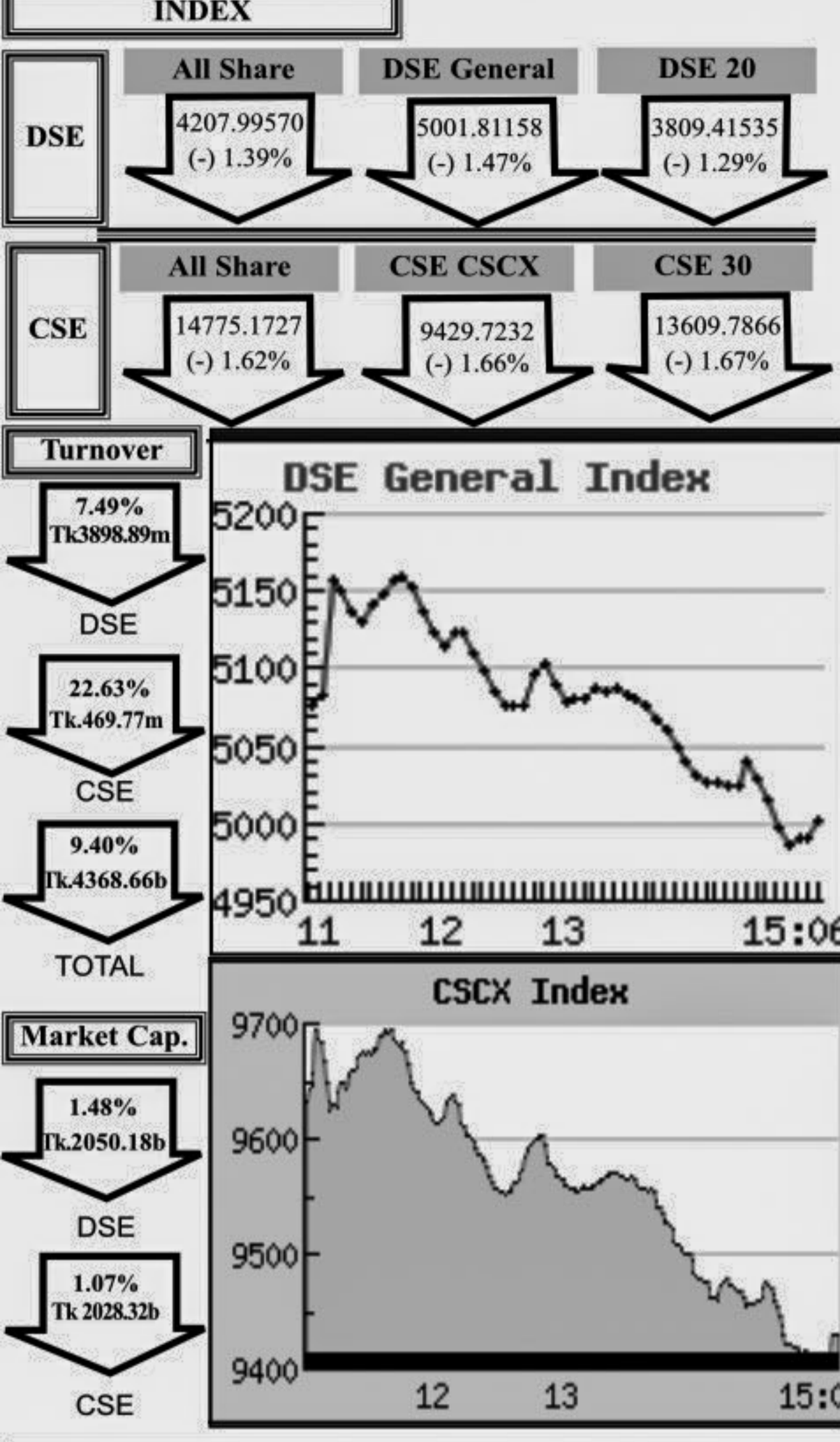


Capital Market Highlights: May 13, 2012



Key Features - May 13, 2012

Indicators	DSE	CSE	TOTAL
Turnover (Million Taka)	3,898.89	469.77	4,368.66
Turnover (Volume)	68,709,008	10,882,787	79,591,795
No. of Contract	95,114	14,991	110,105
Traded Issues	265	184	265
Issue Gain (Avg. Price Basis)	140	93	140
Issue Loss (Avg. Price Basis)	122	88	122
Unchanged Issue (Avg. Price Basis)	3	3	3
Market Cap. Equity (Billion Tk.)	2,050.18	2,028.32	2,050.18
Market Cap. Equity (Billion US\$)	26.45	26.17	26.45

Combined Turnover Leaders

Company	Volume (Share)	Value (M. Taka)	% of Total	Average Price
LankaBangla Fin. -A	2721437	272.98	6.25	100.31
BEXIMCO Ltd. -A	1602193	164.95	3.78	102.95
Grameenphone-A	712080	148.44	3.40	208.46
Jamuna Oil -A	552656	145.46	3.33	263.21
ConfidenceCement A	897442	142.99	3.27	159.33
Beximco Pharma -A	1498996	141.05	3.23	94.1
UCBL -A	4819606	137.38	3.14	28.5
Meghna Petroleum -A	575646	125.74	2.88	218.44
City Bank -A	3055585	123.84	2.83	40.53
Summit Power -A	1538209	104.93	2.40	68.22
M.I. Cement-A	804265	93.09	2.13	115.75
Aftab Auto.-A	608225	91.13	2.09	149.83
Social Islami. B-A	4055985	84.61	1.94	20.86
People's Leasing-A	1337439	69.11	1.58	51.67
UNITED AIR-A	3641448	67.48	1.54	18.53
Square Pharma -A	252270	67.30	1.54	266.79
Titas Gas TDCLA	833900	59.49	1.36	71.34
Keya Cosmetics -A	1219390	58.36	1.34	47.86
GPH Ispat Ltd-N	662000	54.05	1.24	81.65
Golden Son -A	920150	53.90	1.23	58.58
BSRM Steels-A	543100	52.87	1.21	97.35
Olympic Ind. -A	358880	50.91	1.17	141.86
Lafarge SC Cement-Z	1368020	50.17	1.15	36.67
Meghna Cement -A	330000	49.31	1.13	149.42
National Bank -A	1429614	48.21	1.10	33.72
Padma Islami Life*-N	348000	45.10	1.03	129.61
R. N. Spinning-A	1306849	43.72	1.00	33.46
DESCO Ltd. -A	430375	42.58	0.97	98.93
Khulna Power-A	685903	41.59	0.95	60.64
Prime Islami Life -Z	211800	38.97	0.89	184

Sectoral Turnover Summary

Sector	DSE		CSE		Total	
	Mill. (Tk.)	%	Mill. Tk.	%	Mill. Tk.	%
Bank	715.88	18.36	167.01	35.55	882.89	20.21
NBFI	505.47	12.96	47.52	10.12	552.99	12.66
Investment	42.67	1.09	2.70	0.58	45.37	1.04
Engineering	375.49	9.63	46.50	9.90	421.99	9.66
Food & Allied	44.20	1.13	3.65	0.78	47.85	1.10
Fuel & Power	544.47	13.96	39.21	8.35	583.68	13.36
Jute	2.31	0.06			2.31	0.05
Textile	147.29	3.78	18.40	3.92	165.70	3.79
Pharma & Chemical	349.98	8.98	30.69	6.53	380.65	8.71
Paper & Packaging	0.01	0.00	3.07	0.65	3.08	0.07
Service	26.53	0.68	0.05	0.01	26.59	0.61
Leather	25.58	0.66	3.39	0.72	28.97	0.66
Ceramic	35.23	0.90	23.72	5.05	58.95	1.35
Cement	345.90	8.87	0.86	0.18	346.76	7.94
Information Technology	7.80	0.20	9.01	1.92	16.80	0.38
General Insurance	220.80	5.66	9.21	1.96	230.01	5.26
Life Insurance	146.39	3.75	19.16	4.08	165.55	3.79
Telecom	129.28	3.32	11.48	2.44	140.76	3.22
Travel & Leisure	58.00	1.44	34.03	7.24	90.03	2.06
Miscellaneous	175.15	4.49	0.10	0.02	175.25	4.01
Debtenture	2.46	0.06	0.00	0.00	2.46	0.06

Sectoral P/E & EPS

Sector	P/E		EPS(%)	
	DSE	CSE	DSE	CSE
Bank	10.69	10.64	30.86	30.86
NBFI	22.96	23.35	36.85	37.63
Investment	6.52	6.64	16.80	16.80
Engineering	21.07	21.30	43.71	41.83
Food & Allied	16.72	15.60	109.60	111.17
Fuel & Power	14.03	14.02	65.29	65.30
Textile	10.78	10.31	23.90	23.81
Pharma & Chemical	24.71	24.20	62.64	53.27
Paper & Printing	19.98	20.61	12.41	13.27
Service	25.69	25.77	21.85	21.85
Leather	12.58	12.85	111.74	138.13
Ceramic	27.28	27.19	21.37	21.37
Cement	26.02	25.97	56.18	56.18
IT	18.53	18.24	12.31	12.31
General Insurance	25.58	25.24	21.67	21.97
Life Insurance	24.69	24.91	77.27	77.27
Telecom	14.90	14.92	139.90	139.90
Travel & Leisure	17.97	26.03	9.85	7.10
Miscellaneous	5.05	5.07	174.36	169.50
Stock Exchanges	14.05	13.87	41.28	41.05

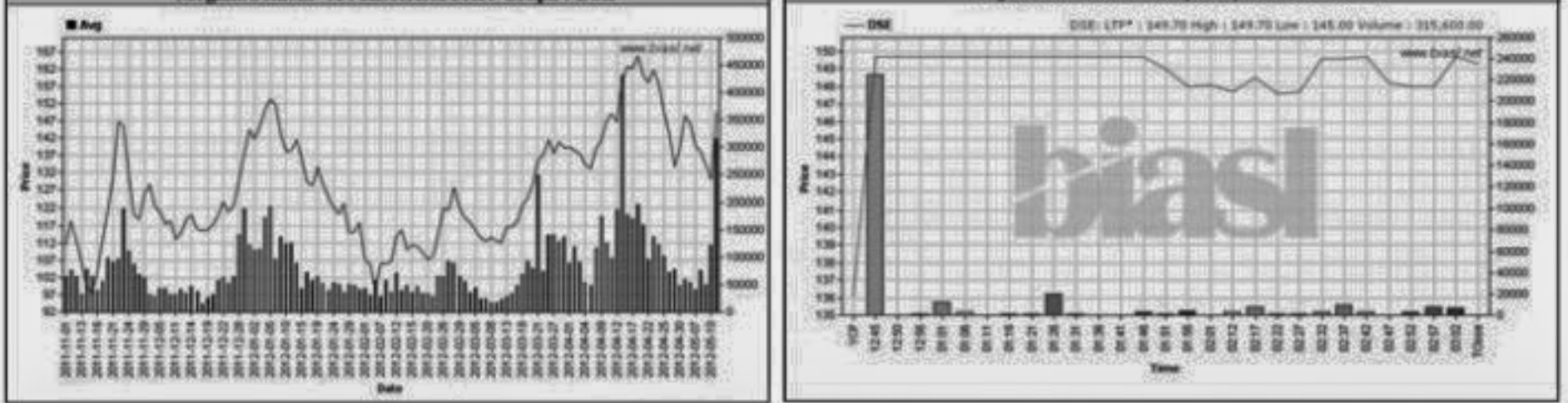
All the above PE and EPS are estimated to get a relative idea only and not calculated by any of the stock exchanges.

Prepared exclusively for Daily Star by Business Information Automation Service Line (BIAS), on the basis of information collected from daily stock quotations and audited reports of the listed companies. High level of caution has been taken to collect and present the above information and data. The publisher will not take any responsibility if any body uses this information and data for his/her investment decision. For any query please email to bias@bol-online.com or call 01552153562 or go to www.bias.net

Capital Gainers

Dhaka Stock Exchange

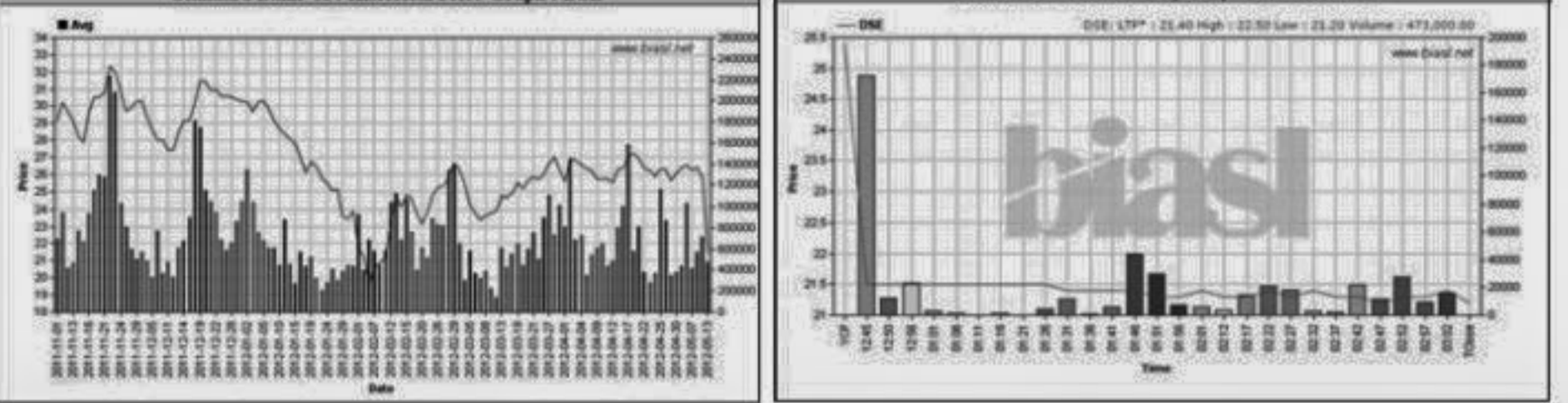
Company	Price Chn. (%)		Price Scale				Turnover		BookV			
	Close	Avg.	Avg.	Close	DayHi	DayLo	Yr Hi	YrLo	M.Tk	Per S	EPS	PE
MeghnaCement -A	9.70	15.04	149.50	149.30	149.70	145.00	254.00	93.3	47.183	30.03	2.96	50.51
National Tea -A	7.42	6.57	656.50	661.80	662.30	630.00	662.30	474.0	7.878	83.5	8.1	81.05
HeidelbergCement -A	4.89	8.18	257.32	255.10	262.40	245.00	327.4	138.1	23.416	93.15	13.2	19.49
Janata Insur -Z	4.51	5.92	285.10	284.00	293.00	279.00	890.0	208.5	5.434	171.32	5.73	49.76
GeminiSeaFoodA	3.92	4.38	222.67	222.60	225.00	216.30	336.9	168.0	0.167	0.3	9.48	23.49
Bangladesh Welding -A	2.67	3.08	31.11	30.80	31.30	30.60	81.1	27.5	8.399	20.7	0.41	75.88
8th ICB M F-A	2.39	2.75	56.00	55.80	56.00	55.50	83.0	44.5	0.168	29.54	12.33	4.54
PragatiLife Insu. -A	2.14	2.15	220.00	220.00	224.00	215.10	354.8	155.6	1.760	30.15	0.6	366.67
Renwick Jaineswar-Z	2.05	1.80	84.62	84.50	86.50	81.80	128.0	63.5	0.275	-90.11	5.5	15.39
Brac B.C. Bond-A	2.05	2.10	1,021.00	1,021.00	1,021.00	1,021.00	1,130.0	942.0	0.005	0	0	-



Capital Losers

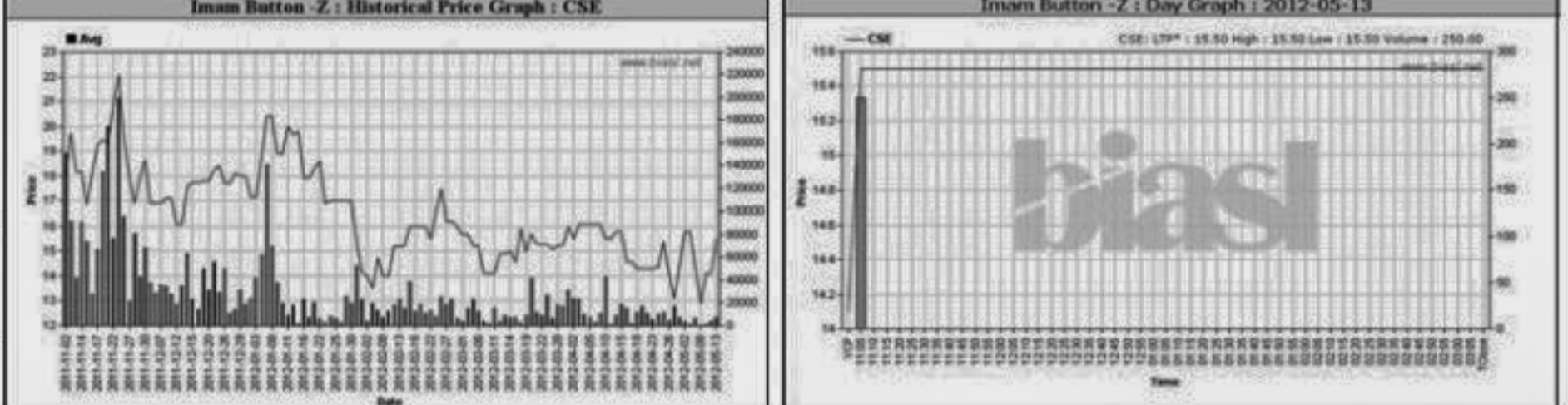
Dhaka Stock Exchange

Company	Price Chn. (%)		Price Scale				Turnover		BookV			
	Close	Avg.	Avg.	Close	DayHi	DayLo	Yr Hi	YrLo	M.Tk	Per S	EPS	PE
Standard Bank -A	-16.54	-16.86	21.45	21.20	23.00	20.00	37.8	19.1	10.156	14.1	2.66	8.06
Asia Insur. Ltd.-A	-13.62	-13.53	49.52	48.20	53.00	48.00	92.9	35.6	19.785	21.55	1.29	38.39
GQ Ball PenA	-8.41	-9.96	186.04	186.20	186.30	181.00	284.0	126.4	25.861	121.88	9.93	18.74
Paramount Insur-A	-7.81	-5.07	31.27	30.70	32.40	30.00	57.1	25.5	1.997	13.19	0.82	38.13
Phoenix Finance-A	-7.18	-2.94	70.32	68.50	74.40	67.60	115.0	48.6	22.680	20.35	2.93	24.00
LR Global BD MF1-A	-7.14	-9.00	9.10	9.10	9.10	9.10	11.0	9.0	0.018	0	0	-
Mercantile Insur -A	-6.57	-6.32	33.03	32.70	34.00	32.40	67.3	28.7	7.580	14.53	1.4	23.59
Intl. Leasing-A	-6.56	-1.61	35.44	34.20	37.00	34.00	158.9	29.1	17.828	11.5	-0.53	-66.87
Legacy Footwear -A	-6.17	-11.44	29.03	30.40	31.50	27.00	57.6	23.4	5.927	16.82	1.23	23.60
FAS Fin. & Inv. Ltd-A	-6.00	-2.94	38.68	37.60	40.90	37.30	66.0	34.1	10.019	17.74	0.17	227.53



Chittagong Stock Exchange

Company	Price Chn. (%)		Price Scale				Turnover		BookV			
	Close	Avg.	Avg.	Close	DayHi	DayLo	Yr Hi	YrLo	M.Tk	Per S	EPS	PE
Imam Button -Z	9.93	9.93	15.50	15.50	15.50	15.50	18.7	18.7	0.004	7.35	-1.74	-8.91
MeghnaCement -A	9.75	14.54	147.72	147.50	147.80	146.20	254.9	92.0	2.127	30.03	2.96	49.91
Phoenix Fin. 1st MF-A	7.94	7.94	6.80	6.80	6.80	6.80	14.7	5.2	0.003	11.33	1.33	5.11
HeidelbergCement -A	7.41	7.82	255.97	255.00	258.10	249.00	253.4	253.4	0.384	93.15	13.2	19.39
Padma Islami Life*-N	4.59	3.82	129.21	130.00	134.00	124.10	194.5	118.1	8.140	25.76	1.63	79.27
Rupali Bank -A	4.21	2.29	99.03	99.00	99.10	98.80	181.6	78.4	0.079	92.43	6.62	14.96
Bangladesh Welding -A	3.00	3.08	31.14	30.90	31.40	30.50	80.0	28.4	2.510	20.7	0.41	75.95
Popular Life 1st M.F.-A	1.49	3.36	6.76	6.80	6.80	6.60	10.0	5.0	0.054	10.07	-0.03	-225.33
People's Leasing-A	0.99	4.98	51.69	50.90	53.00	50.50	150.0	38.8	9.302	18.51	2.63	19.65
ConfidenceCement A	0.38	2.14	158.76	157.60	160.20	156.50	216.0	75.7	4.496	99.6	5.29	30.01



Chittagong Stock Exchange

Company	Price Chn. (%)		Price Scale				Turnover		BookV		
	Close	Avg.	Avg.	Close	DayHi	DayLo	Yr Hi	YrLo	M.Tk	Per S	EPS
Standard Bank -A	-16.21										