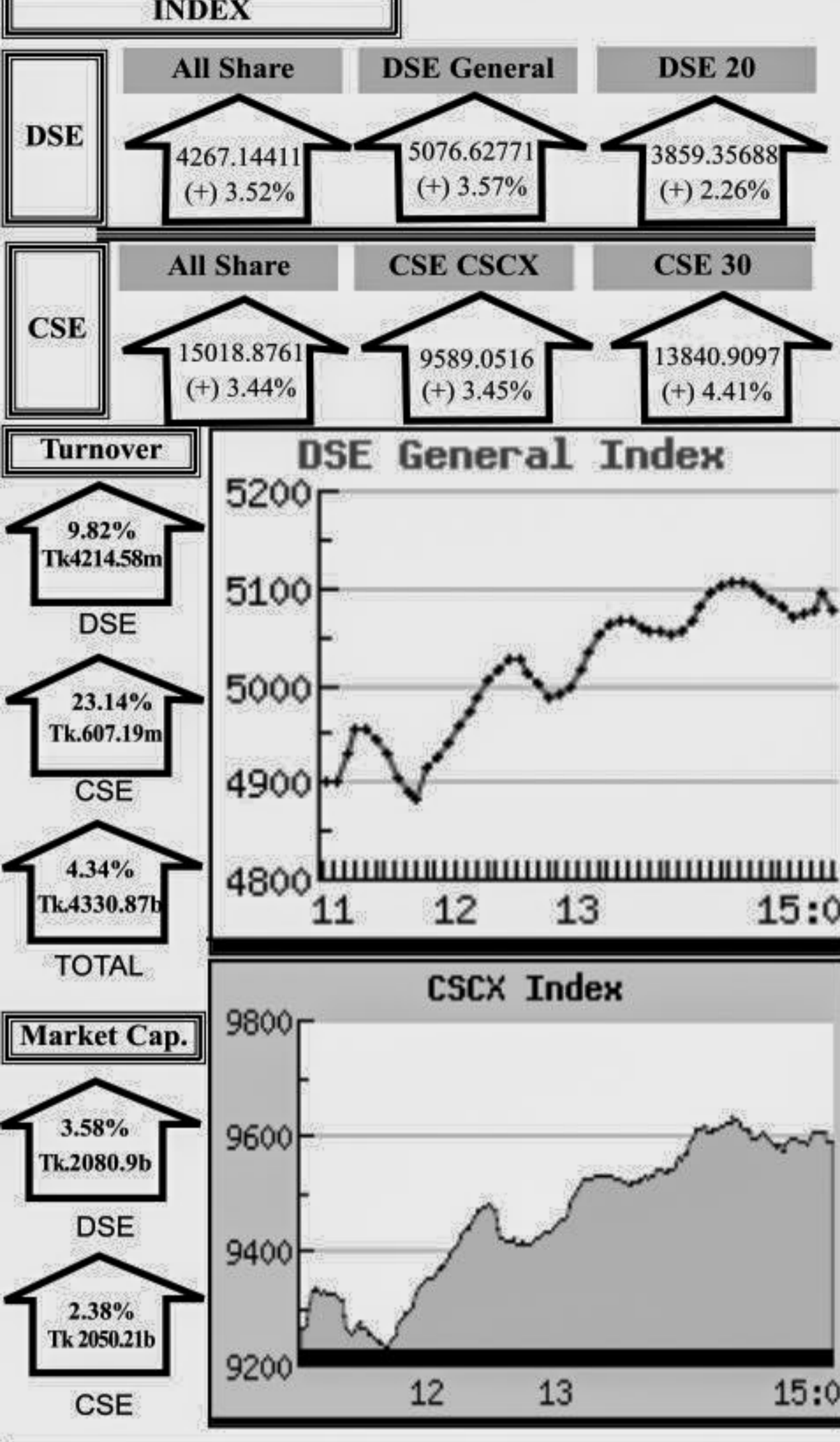


Capital Market Highlights: May 10, 2012



Key Features - May 10, 2012

Indicators	DSE	CSE	TOTAL
Turnover (Million Taka)	4,214.58	607.19	4,821.77
Turnover (Volume)	77,911,931	13,567,544	91,479,475
No. of Contract	102,095	17,538	119,633
Traded Issues	258	181	258
Issue Gain (Avg. Price Basis)	218	155	218
Issue Loss (Avg. Price Basis)	22	25	22
Unchanged Issue (Avg. Price Basis)	18	1	18
Market Cap. Equity (Billion Tk.)	2,080.90	2,050.21	2,080.90
Market Cap. Equity (Billion US\$)	26.85	26.45	26.85

Combined Turnover Leaders

Company	Volume (Share)	Value (M. Taka)	% of Total	Average Price
LankaBangla Fin. -A	3265135	308.87	6.41	94.6
Grameenphone-A	1165422	240.10	4.98	206.02
Jamuna Oil -A	790588	205.71	4.27	260.19
R. N. Spinning-A	5735811	187.51	3.89	32.69
Titas Gas TDCLA	2422840	170.56	3.54	70.4
UCBL -A	5949949	167.18	3.47	28.1
City Bank -A	4026788	162.95	3.38	40.47
Meghna Petroleum -A	668169	141.52	2.94	211.81
BEXIMCO Ltd. -A	1381356	140.15	2.91	101.46
Aftab Auto -A	748804	107.52	2.23	143.59
Beximco Pharma -A	1099323	102.37	2.12	93.12
UNITED AIR-A	4743638	87.20	1.81	18.38
M.I. Cement-A	786645	86.52	1.79	109.99
Square Pharma -A	290350	77.40	1.61	266.56
People's Leasing-A	1526558	75.04	1.56	49.16
ConfidenceCement A	469863	73.18	1.52	155.75
GPH Ispat Ltd-N	860500	70.16	1.46	81.54
Al Arafah Islami B-A	2282009	65.31	1.35	28.62
Summit Power -A	941211	64.31	1.33	68.33
LafargeS Cement-Z	1744500	62.57	1.30	35.87
MJL BD Ltd.-A	624715	58.27	1.21	93.28
National Bank -A	1717296	57.85	1.20	33.69
BSRM Steels-A	571720	54.57	1.13	95.46
Olympic Ind. -A	364780	51.14	1.06	140.18
Keya Cosmetics -A	892243	43.12	0.89	48.33
Southeast Bank-A	1927330	41.97	0.87	21.77
Padma Islami Life*-N	324000	40.46	0.84	124.87
DESCO Ltd. -A	420237	39.94	0.83	95.04
Active Fine Chem -A	574725	39.56	0.82	68.83
Fareast Islami Life -A	199605	38.74	0.80	194.09

Sectoral Turnover Summary

Sector	DSE		CSE		Total	
	Mill. (Tk.)	%	Mill. Tk.	%	Mill. Tk.	%
Bank	808.46	19.18	95.15	15.67	903.62	18.74
NBFI	582.22	13.81	64.25	10.58	646.47	13.41
Investment	66.64	1.58	3.17	0.52	69.81	1.45
Engineering	377.97	8.97	62.32	10.26	440.29	9.13
Food & Allied	72.15	1.71	3.34	0.55	75.49	1.57
Fuel & Power	675.16	16.02	57.16	9.41	732.32	15.19
Jute	1.17	0.03			1.17	0.02
Textile	162.45	3.85	153.83	25.34	316.29	6.56
Pharma & Chemical	331.20	7.86	31.29	5.15	362.49	7.52
Paper & Packaging	0.18	0.00	6.44	1.06	6.63	0.14
Service	28.22	0.67	0.16	0.03	28.38	0.59
Leather	23.79	0.56	4.84	0.80	28.63	0.59
Ceramic	60.19	1.43	26.92	4.43	87.12	1.81
Cement	245.87	5.83	1.71	0.28	247.59	5.13
Information Technology	14.89	0.35	6.97	1.15	21.86	0.45
General Insurance	216.16	5.13	12.39	2.04	228.55	4.74
Life Insurance	123.39	2.93	26.56	4.37	149.95	3.11
Telecom	213.54	5.07	15.94	2.62	229.48	4.76
Travel & Leisure	71.26	1.69	34.71	5.72	105.97	2.20
Miscellaneous	136.29	3.23	0.03	0.01	136.33	2.83
Debtenture	3.36	0.08	0.00	0.00	3.36	0.07

Sectoral P/E & EPS

Sector	P/E		EPS(%)	
	DSE	CSE	DSE	CSE
Bank	9.87	9.86	34.15	34.15
NBFI	22.45	23.16	36.85	37.63
Investment	6.50	6.62	16.80	16.80
Engineering	20.71	20.87	43.71	41.83
Food & Allied	16.72	16.44	109.83	111.41
Fuel & Power	14.07	14.08	64.52	64.53
Textile	10.80	10.30	23.90	23.81
Pharma & Chemical	24.68	24.24	62.64	53.27
Paper & Printing	20.56	20.61	12.41	13.27
Service	25.66	25.78	21.85	21.85
Leather	12.67	12.91	111.74	138.13
Ceramic	27.34	27.51	21.37	21.37
Cement	24.42	24.37	56.48	56.48
IT	18.46	18.54	12.31	12.31
General Insurance	25.21	25.38	22.26	22.11
Life Insurance	24.51	24.83	77.27	77.27
Telecom	14.74	14.63	139.90	139.90
Travel & Leisure	17.82	25.96	9.85	7.10
Miscellaneous	4.98	4.99	174.73	169.85
Stock Exchanges	13.59	13.45	43.25	43.01

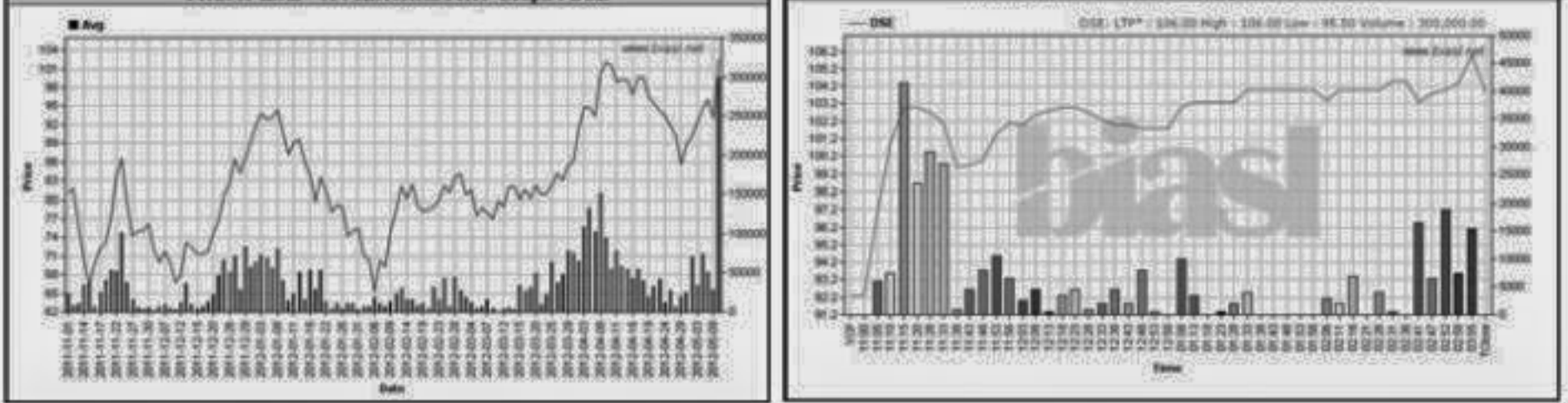
All the above PE and EPS are estimated to get a relative idea only and not calculated by any of the stock exchanges.

Prepared exclusively for Daily Star by Business Information Automation Service Line (BIASL), on the basis of information collected from daily stock quotations and audited reports of the listed companies. High level of caution has been taken to collect and present the above information and data. The publisher will not take any responsibility if any body uses this information and data for his/her investment decision. For any query please email to biasl@bol-online.com or call 01552153562 or go to www.biasl.net

Capital Gainers

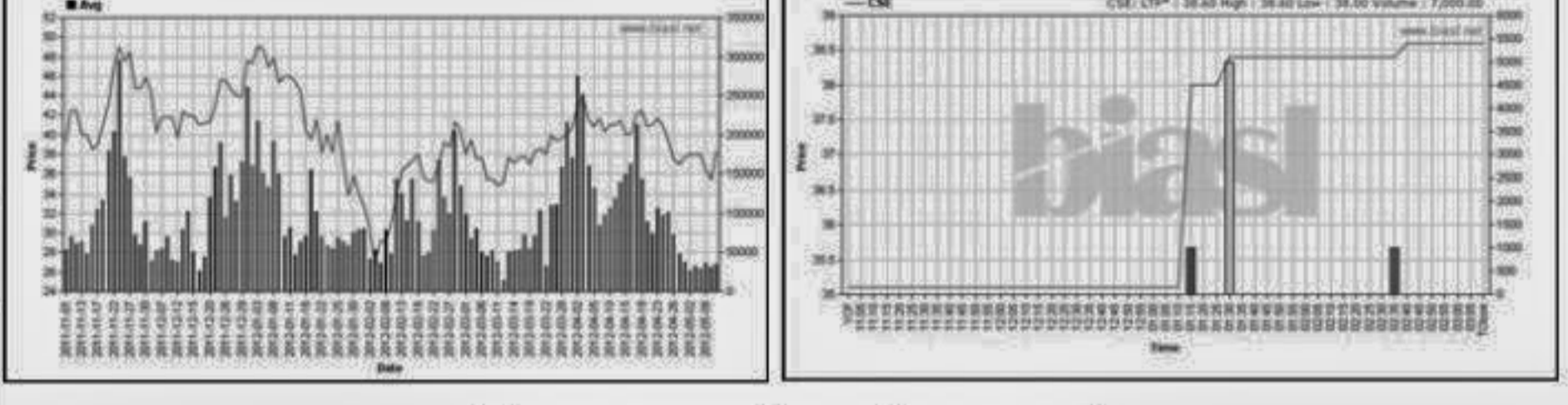
Dhaka Stock Exchange

Company	Price Chn. (%)		Price Scale				Turnover		BookV			
	Close	Avg.	Avg. Close	DayHi	DayLo	Yr Hi	YrLo	M.Tk	Per S	EPS	PE	
Pioneer Insur -A	12.57	10.31	102.57	103.90	106.00	95.50	124.00	63.6	30.773	29.66	6.42	15.98
Navana CNG-A	9.91	2.56	98.42	102.00	102.00	90.00	184.00	48.6	33.604	22.24	6.06	16.24
LankaBangla Fin. -A	9.88	2.46	94.57	97.90	98.00	80.30	224.90	59.1	276.778	34.55	4.18	22.62
People's Leasing-A	9.83	5.04	49.14	50.30	50.30	45.00	136.2	38.9	63.541	18.51	2.63	18.68
IDLC Finance -A	9.73	4.44	126.02	128.60	128.90	108.00	238.0	71.5	28.231	32.17	4.04	31.19
In Tech Online -A	9.62	3.81	22.36	22.80	22.80	20.90	33.3	16.5	3.632	10.05	0.93	24.04
Uttara Finance -A	9.56	5.39	117.05	119.20	119.60	105.00	197.0	71.0	23.915	39.82	7.84	14.93
Aftab Auto -A	9.55	2.60	143.69	149.10	149.70	128.00	298.6	86.0	82.498	56.28	19.61	7.33
Union Capital -A	9.38	4.26	43.32	44.30	44.50	39.50	108.6	35.1	8.531	12.41	1.7	25.48
BD. Autocars -B	9.33	5.66	40.50	41.00	41.20	37.80	70.2	26.5	0.966	6.28	0.52	77.88



Chittagong Stock Exchange

Company	Vol.	Value	% of Total	Average Price
B I F C -A	9.97	8.09	38.36	38.60
Progressive Life-A	9.94	9.94	177.00	177.00
Eastern Cables-A	9.89	9.95	60.00	60.00
Union Capital -A	9.83	4.79	43.56	44.70
Uttara Finance -A	9.59	7.21	118.86	120.00
In Tech Online -A	9.48	4.92	22.83	23.10
IDLC Finance -A	9.28	6.94	128.59	130.00
Key & Que (BD) -B	9.20	8.22	45.05	45.10
Fine Foods A	8.42	8.32	29.57	29.60
Delta Brac HFCL-A	7.98	4.82	91.92	93.40



Capital Losers

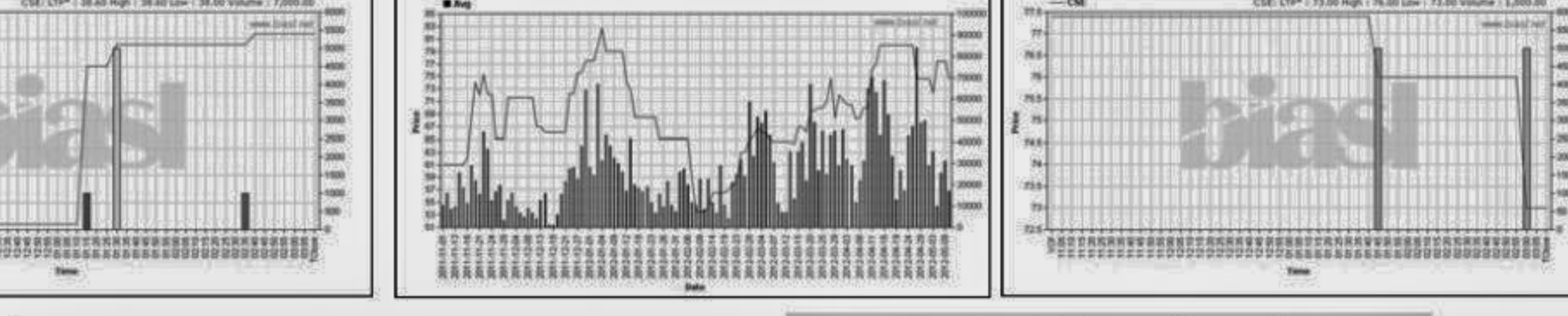
Dhaka Stock Exchange

Company	Price Chn. (%)		Price Scale				Turnover		BookV			
	Close	Avg.	Avg. Close	DayHi	DayLo	Yr Hi	YrLo	M.Tk	Per S	EPS	PE	
Renata Ltd. -A	-19.95	-20.14	971.49	981.20	994.00	955.00	1350.00	880.1	8.452	32.97	37.66	25.80
AB Bank 1st Mutual Fund-A-8.74	-8.74	9.40	9.40	9.40	9.40	12.5	9.00	0.005	10.31	0	0	0
Agrani Insurance -A	-7.43	-9.08	36.56	37.40	38.80	34.50	66.3	28.2	5.448	12.35	1.24	29.48
EBL NRB M.F.-A	-3.61	-5.88	8.00	8.00	8.00	8.00	11.2	7.7	0.016	0	0	0
4th ICB M.F.-A	-3.30	-3.73	151.62	152.50	157.00	150.00	258.0	150.0	0.561	58.63	23.4	6.48
Brac B.C. Bond-A	-2.10	-2.34	1000.00	1000.50	1024.00	1000.00	1130.00	942.0	0.355	0	0	0
Titas Gas TDCLA	-1.78	-5.21	70.37	71.80	73.00	66.00	90.0	47.5	152.268	29.98	9.74	7.22
2nd ICB M.F.-A	-1.38	-1.10	257.14	256.40	257.10	256.00	407.0	256.0	0.180	76.34	33.02	7.79
MBL 1st M.F.-A	-1.35	-2.16	7.25	7.30	7.90	7.10	10.3	7.1	0.029	0	0	0
Brac Bank -A	-0.55	-0.22	36.32	36.20	36.70	32.80	54.5	28.0	23.573	25.45	4.62	7.86



Chittagong Stock Exchange

Company	Vol.	Value	% of Total	Average Price
Rangpur Foundry -A	-5.68	-3.78	74.50	73.00
Islami Ins.BD-A	-5.01	-5.01	36.00	36.00
Bangas -A	-3.77	-3.77	125.00	125.00
BATBCL -A	-2.22	-1.23	586.70	586.70
Titas Gas TDCLA	-2.18	-4.39	70.59	71.70
Rangpur Foundry -A	-1.92	-1.92	179.00	179.00
ACI ZERO Bond-A	-1.47	-1.45	772.40	772.00
Takaful Islami Insu-A	-1.30	-1.58	53.48	53.00
Prime Islami Life -Z	-0.55	-0.55	180.00	180.00
Phoenix Insur -A	-0.14	-0.95	72.72	73.30



Turnover Leaders

Dhaka Stock Exchange

Company	Vol. Share	Value (M.Tk.)	% of Total	Price Scale			C.Pite	BookV			
				Avg. Close	DayHi	DayLo					
LankaBangla Fin. -A	2926635	276.778	6.57	94.57	97.90	98.00	80.30	9.88	34.55	4.18	22.62
Grameenphone-A	1035715	213.543	5.07	206.18	208.60	210.80	190.00	4.09	28.8	13.99	14.74
Jamuna Oil -A	767332	199.660	4.74	260.20	264.90	267.00	235.00	4.29	40.19	14.45	18.01
City Bank -A	3931775	159.120	3.78	40.47	40.70	42.50	35.50	4.63	28.35	3.26	12.41
Titas Gas TDCLA	2163500	152.268	3.61	70.37	71.80	73.00	66.00	-1.78	29.98	9.74	7.22
UCBL -A	5106924	143.262	3.40	28.05	28.30	29.50	25.00	2.91	19.09	3.65	7.68
Meghna Petroleum -A	628683	132.747	3.15	211.82	218.40	220.90	186.00	3.77	32.27	14.15	14.97
BEXIMCO Ltd. -A	1086650	110.260	2.62	101.47	102.50	104.00	91.00	3.22	118.71	23.73	42.62
Beximco Pharma -A	962493	89.641	2.13	93.13	93.90	95.00	81.30	3.99	68.03	4.76	19.57
Aftab Auto -A	574144	82.498	1.96	143.69	149.10	149.70	128.00	9.55	56.28	19.61	7.33
Square Pharma -A	275360</										