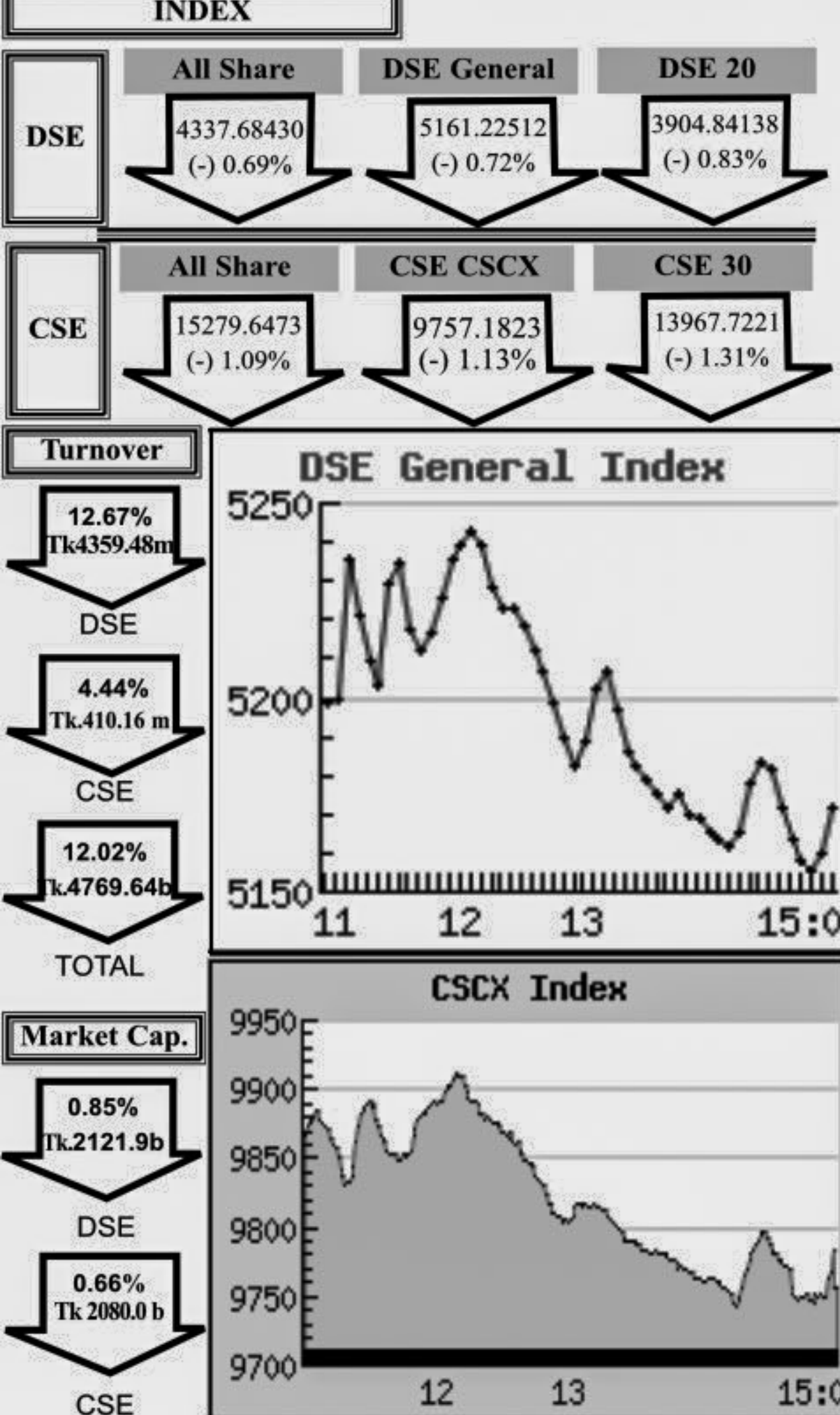
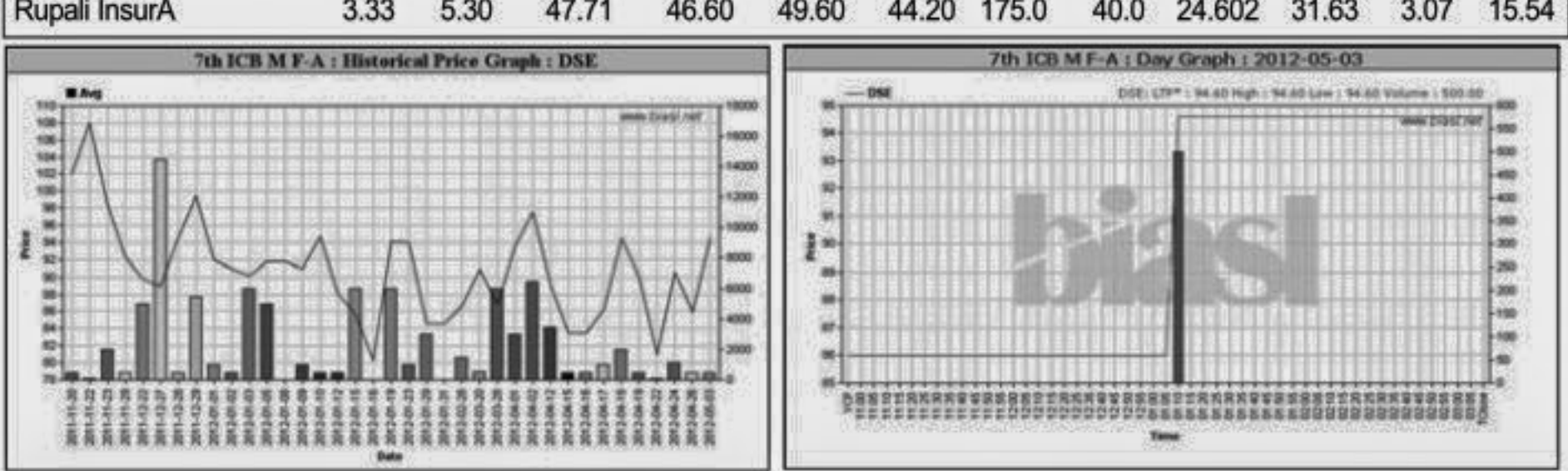


Capital Market Highlights: May 03, 2012



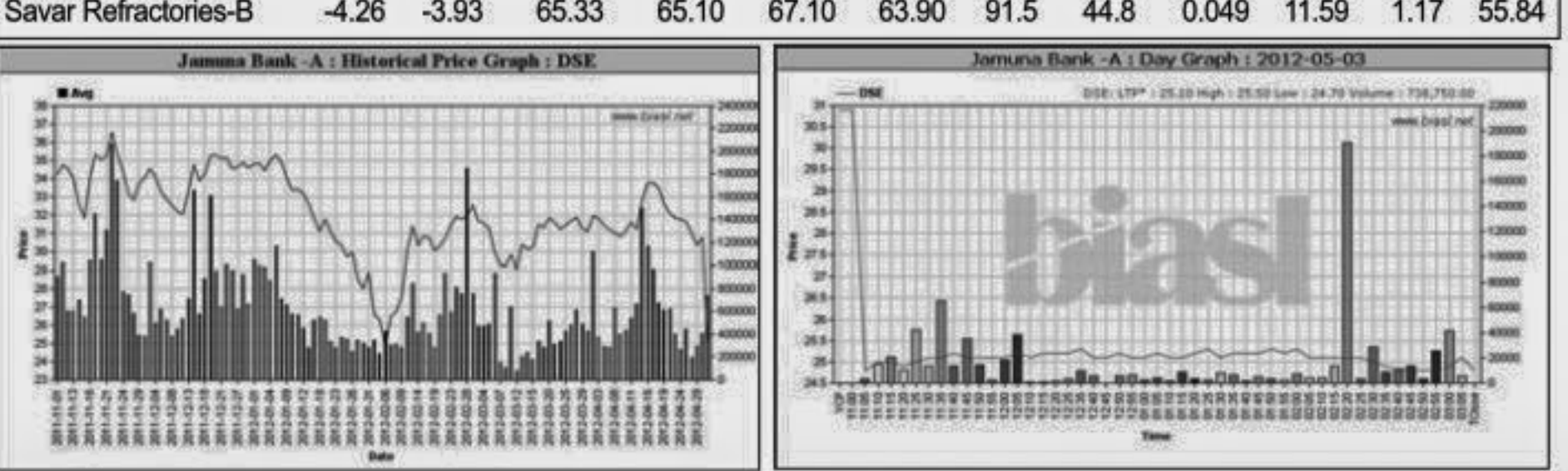
Capital Gainers

Dhaka Stock Exchange table with columns: Company, Price Chn. (%), Price Scale, Turnover, BookV. Top gainers include 7th ICB M F-A, Northern G Insur-A, Modern Dyeing-Z.



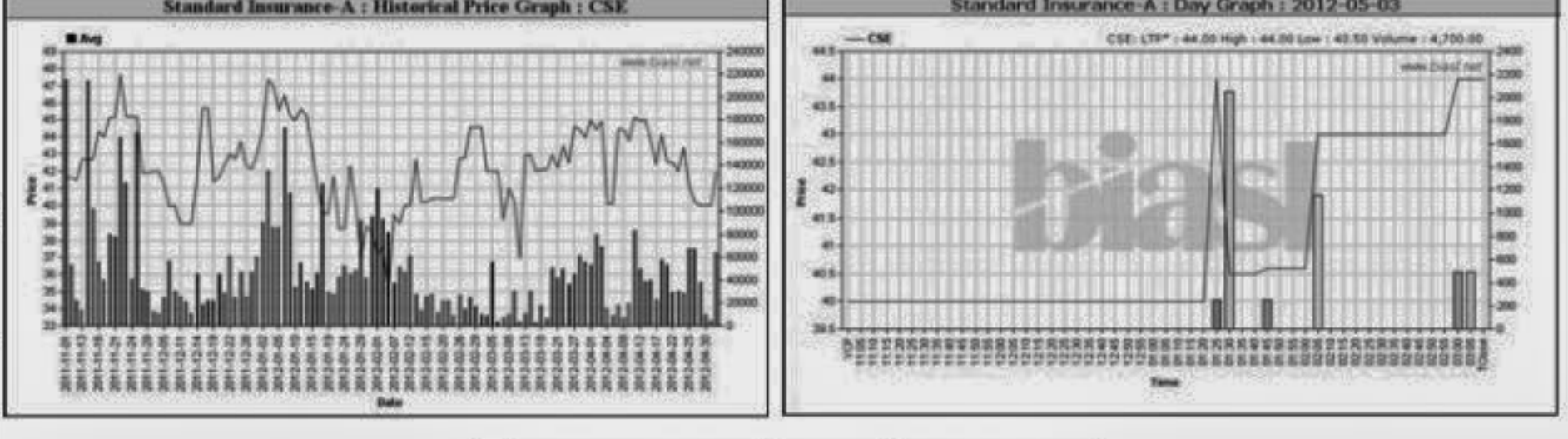
Capital Losers

Dhaka Stock Exchange table with columns: Company, Price Chn. (%), Price Scale, Turnover, BookV. Top losers include Jamuna Bank -A, Al Arafat Islami B-A, I P D C-A.



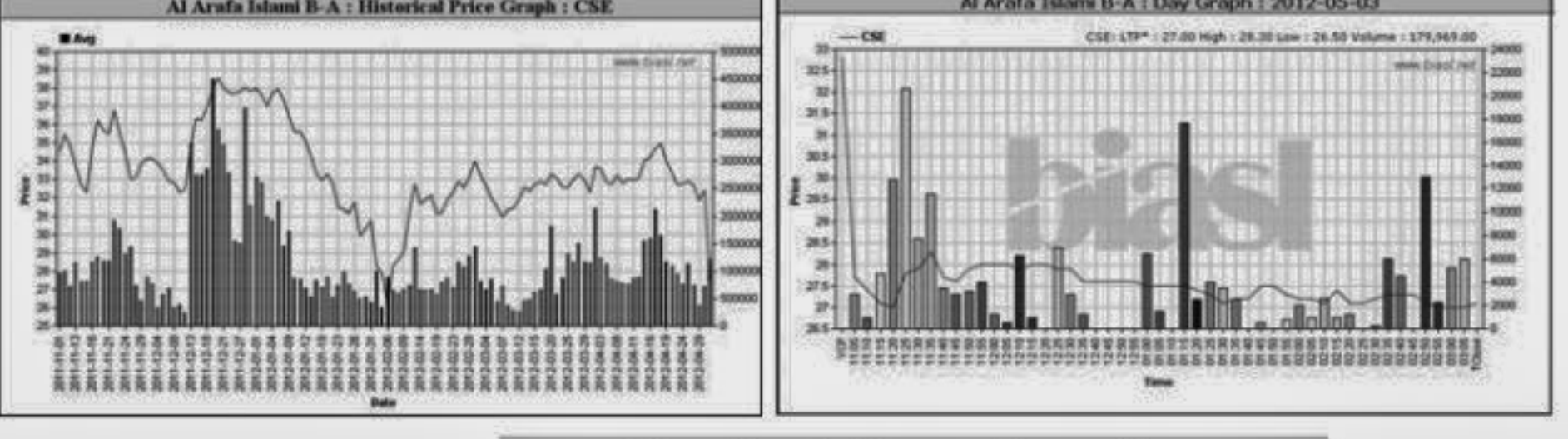
Chittagong Stock Exchange

Chittagong Stock Exchange table with columns: Company, Price Chn. (%), Price Scale, Turnover, BookV. Top gainers include Standard Insurance-A, Northern G Insur-A, Samata Leather-R-Z.



Chittagong Stock Exchange

Chittagong Stock Exchange table with columns: Company, Price Chn. (%), Price Scale, Turnover, BookV. Top losers include Jamuna Bank -A, Al Arafat Islami B-A, Apex Foods -A.



Key Features - May 03, 2012

Indicators table: Turnover (Million Taka), Turnover (Volume), No. of Contract, Traded Issues, Issue Gain (Avg. Price Basis), Issue Loss (Avg. Price Basis), Unchanged Issue (Avg. Price Basis), Market Cap. Equity (Billion Tk.), Market Cap. Equity (Billion US\$).

Turnover Leaders

Dhaka Stock Exchange table with columns: Company, Vol., Value, % of Big, Price Scale, C.Pite, BookV. Top turnover leaders include LankaBangla Fin. -A, Jamuna Oil -A, Gramephone-A.



Market Cap. Leader

Dhaka Stock Exchange table with columns: Company, Market Cap., % of, AVERAGE, Price Scale, BookV. Top market cap. leaders include Gramephone-A, ICB -A, Titas Gas TDCLA.

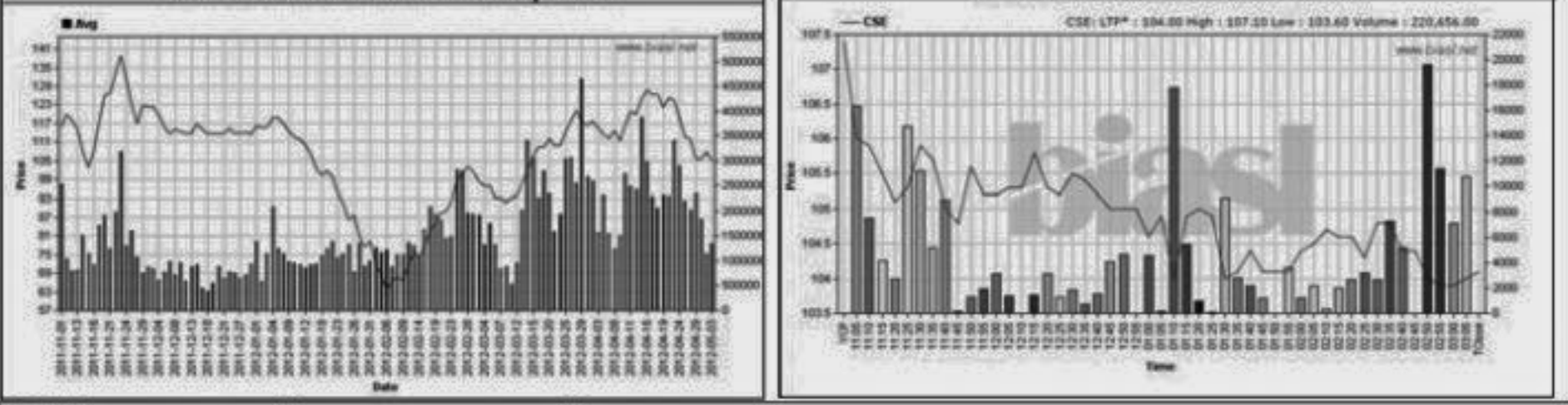


Combined Turnover Leaders

Table with columns: Company, Volume (Share), Value (M. Taka), %of Total, Average Price. Top leaders include LankaBangla Fin. -A, Gramephone-A, Jamuna Oil -A.

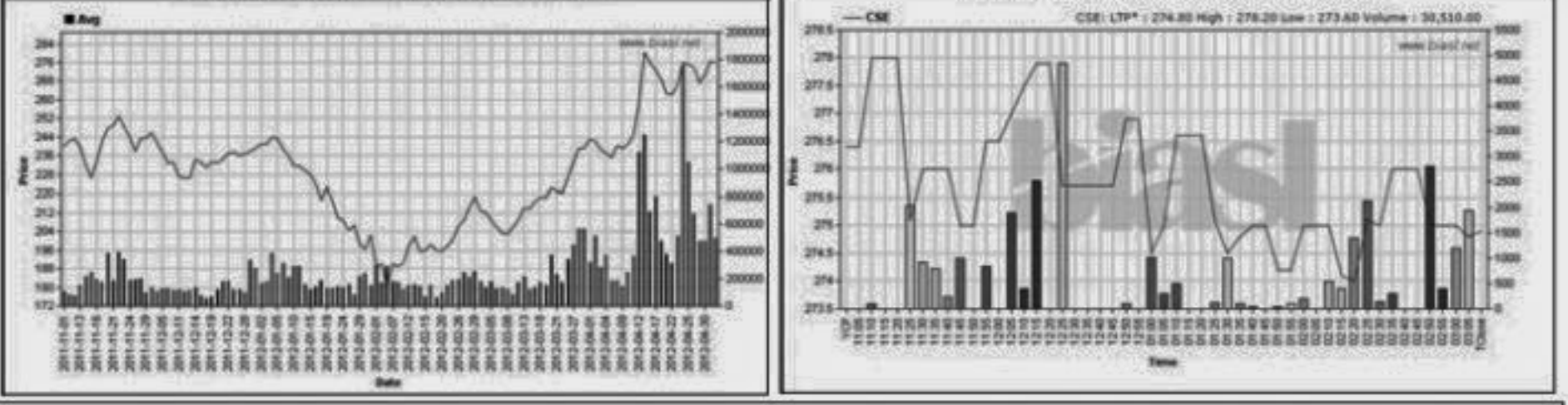
Chittagong Stock Exchange

Chittagong Stock Exchange table with columns: Company, Vol., Value, % of Big, Price Scale, C.Pite, BookV. Top gainers include LankaBangla Fin. -A, BEXIMCO Ltd. -A, R. N. Spinning-A.



Chittagong Stock Exchange

Chittagong Stock Exchange table with columns: Company, Market Cap., % of, AVERAGE, Price Scale, BookV. Top gainers include Gramephone-A, ICB -A, Titas Gas TDCLA.

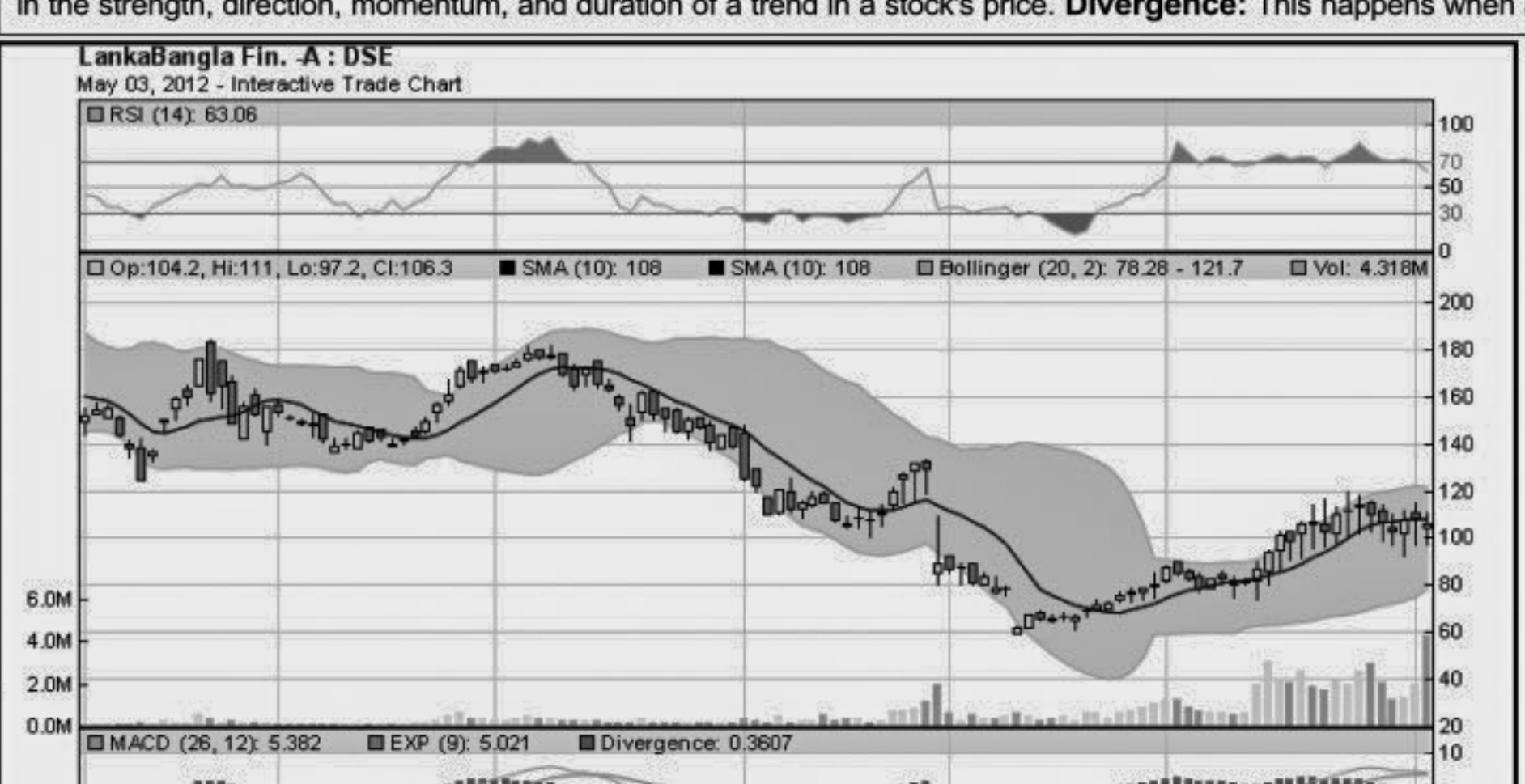


Sectoral Turnover Summary

Sectoral Turnover Summary table with columns: Sector, DSE, CSE, Total. Sectors include Bank, NBFI, Investment, Engineering, Food & Allied, Fuel & Power, Textile, Pharma & Chemical, Paper & Packaging, Service, Leather, Ceramic, Cement, Information Technology, General Insurance, Life Insurance, Telecom, Travel & Leisure, Miscellaneous, Debiture.

When to buy or sell

Investors follow many calculations of corporate performance when deciding if a stock is undervalued or overvalued. These range from the simple price-earnings ratio, or P/E, to far more technical ways of attempting to discern whether a stock is trending up or down. Here are some of the most common. RSI (Relative Strength Index): A technical momentum indicator that compares the size of recent gains to recent losses... SMA (Simple Moving Average): A simple, or arithmetic, moving average is the average stock price over a certain period of time... Bollinger Band: A band that provides a relative definition of high and low, it was developed by famous technical trader John Bollinger... MACD (Moving Average Convergence Divergence): A trend-following momentum indicator that shows the relationship between two moving averages of prices.



Sectoral P/E & EPS

Sectoral P/E & EPS table with columns: Sector, P/E, EPS(%). Sectors include Bank, NBFI, Investment, Engineering, Food & Allied, Fuel & Power, Textile, Pharma & Chemical, Paper & Printing, Service, Leather, Ceramic, Cement, IT, General Insurance, Life Insurance, Telecom, Travel & Leisure, Miscellaneous, Stock Exchanges.