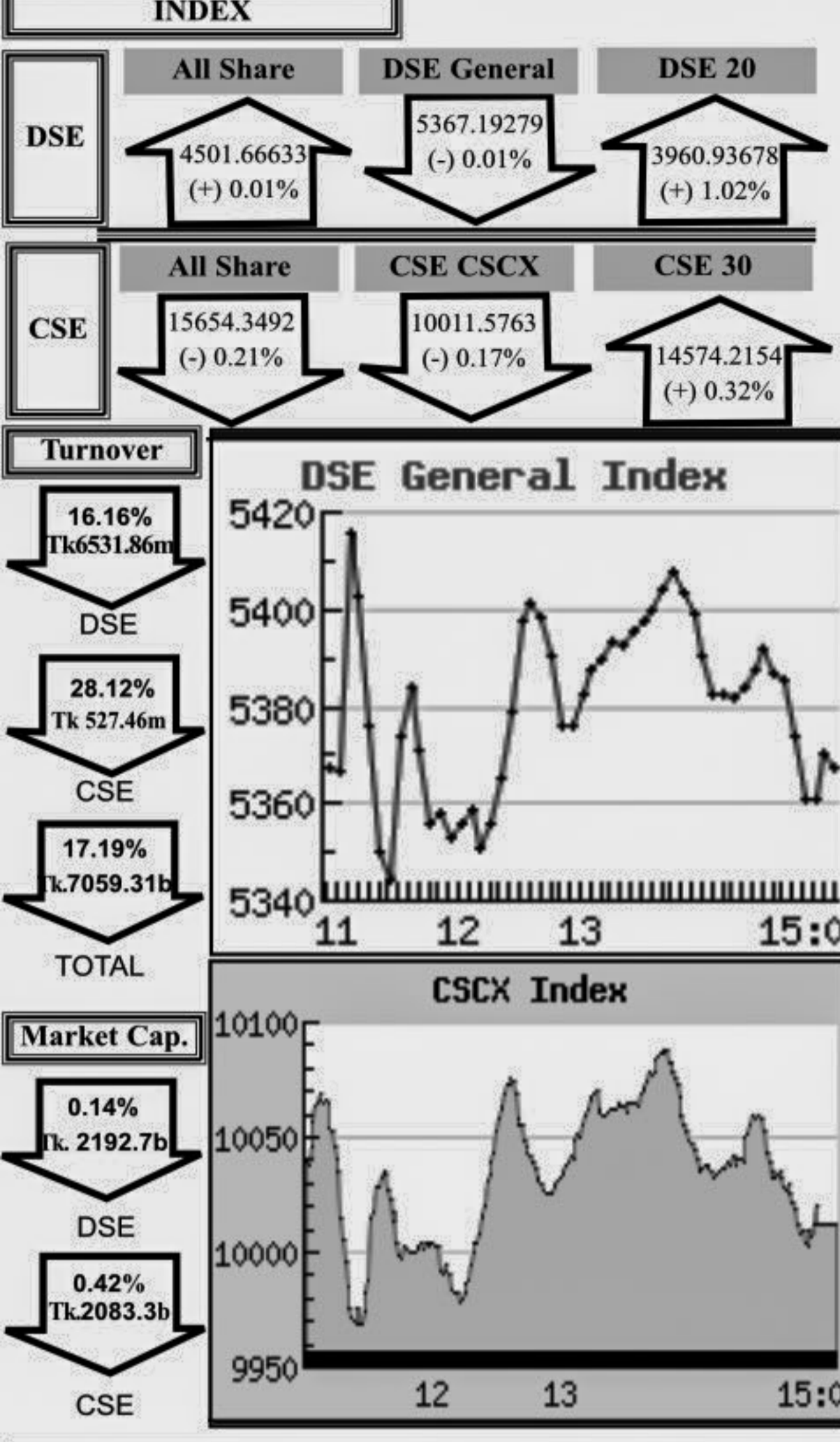


Capital Market Highlights: April 22, 2012



Key Features - April 22, 2012

Indicators	DSE	CSE	TOTAL
Turnover (Million Taka)	6,531.86	527.46	7,059.31
Turnover (Volume)	97,540,437	9,163,291	106,703,728
No. of Contract	136,904	18,680	155,584
Traded Issues	263	192	263
Issue Gain (Avg. Price Basis)	79	51	79
Issue Loss (Avg. Price Basis)	181	140	181
Unchanged Issue (Avg. Price Basis)	3	1	3
Market Cap. Equity (Billion Tk.)	2,192.65	2,083.28	2,192.65
Market Cap. Equity (Billion US\$)	28.29	26.88	28.29

Combined Turnover Leaders

Company	Volume (Share)	Value (M. Taka)	% of Total	Average Price
Beximco Pharma -A	4335051	440.64	6.24	101.65
Meghna Petroleum -A	1729480	383.88	5.44	221.96
BEXIMCO Ltd. -A	2714039	339.87	4.81	125.23
Jamuna Oil -A	1057024	287.10	4.07	271.62
LankaBangla Fin. -A	2334530	247.43	3.51	105.99
Grameenphone-A	1149310	246.67	3.49	214.63
DESCO Ltd. -A	1828493	198.76	2.82	108.77
M.I. Cement-A	1480346	188.05	2.66	127.03
Titas Gas TDCLA	1977100	160.05	2.27	80.95
GPH Ispat Ltd-N	1934500	151.82	2.15	78.48
Aftab Auto.-A	850707	131.54	1.86	154.63
MJL BD Ltd.-A	1022024	123.01	1.74	120.36
ConfidenceCement A	710367	115.86	1.64	163.09
BSRM Steels-A	1022900	110.07	1.56	107.61
National Bank -A	2619793	97.13	1.38	37.08
Uttara Finance -A	511779	92.46	1.31	180.66
UNITED AIR-A	4569091	90.11	1.28	19.72
Phoenix Finance-A	1094620	87.29	1.24	79.74
Square Pharma -A	327100	85.72	1.21	262.07
Islami Bank BD -A	1354501	76.98	1.09	56.83
Olympic Ind. -A	531705	74.32	1.05	139.78
Padma Islami Life*-N	484500	73.79	1.05	152.29
S. Alam CR Steel -A	1134770	72.94	1.03	64.28
R. N. Spinning-A	1941229	72.87	1.03	37.54
UCBL -A	2270076	72.21	1.02	31.81
Union Capital -A	1382164	72.19	1.02	52.23
People's Leasing-A	1162864	71.20	1.01	61.23
Summit Power -A	958410	69.73	0.99	72.76
LafargeS Cement-Z	1906500	69.26	0.98	36.33
City Bank -A	1675300	66.78	0.95	39.86

Sectoral Turnover Summary

Sector	DSE		CSE		Total	
	Mill. (Tk.)	%	Mill. Tk.	%	Mill. Tk.	%
Bank	822.75	12.60	90.50	17.16	913.24	12.94
NBFI	959.39	14.69	67.53	12.80	1026.92	14.55
Investment	83.47	1.28	5.19	0.98	88.66	1.26
Engineering	680.27	10.41	74.54	14.13	754.80	10.69
Food & Allied	130.94	2.00	6.07	1.15	137.00	1.94
Fuel & Power	1245.08	19.06	49.50	9.38	1294.57	18.34
Jute	6.03	0.09			6.03	0.09
Textile	250.82	3.84	24.81	4.70	275.63	3.90
Pharma & Chemical	640.61	9.81	56.58	10.73	697.19	9.88
Paper & Packaging	0.08	0.00	6.19	1.17	6.26	0.09
Service	38.56	0.59	1.03	0.20	39.59	0.56
Leather	26.39	0.40	6.84	1.30	33.23	0.47
Ceramic	113.15	1.73	31.94	6.06	145.09	2.06
Cement	401.98	6.15	1.70	0.32	403.68	5.72
Information Technology	28.58	0.44	8.73	1.66	37.31	0.53
General Insurance	185.88	2.85	13.26	2.51	199.14	2.82
Life Insurance	237.64	3.64	15.96	3.03	253.60	3.59
Telecom	230.72	3.53	10.49	1.99	241.21	3.42
Travel & Leisure	79.62	1.22	56.43	10.70	136.05	1.93
Miscellaneous	366.27	5.61	0.18	0.03	366.45	5.19
Debtenture	3.66	0.06	0.00	0.00	3.66	0.05

Sectoral P/E & EPS

Sector	P/E		EPS(%)	
	DSE	CSE	DSE	CSE
Bank	10.19	10.17	35.62	35.62
NBFI	25.17	23.59	37.97	38.81
Investment	6.94	6.97	16.80	16.80
Engineering	22.75	23.13	42.96	41.06
Food & Allied	16.31	16.21	116.33	118.09
Fuel & Power	15.17	15.13	65.30	65.31
Textile	11.89	11.35	23.89	23.80
Pharma & Chemical	25.48	24.48	61.08	53.16
Paper & Printing	21.78	22.17	12.41	13.27
Service	27.94	28.08	21.85	21.85
Leather	13.37	12.89	112.67	139.66
Ceramic	29.96	29.66	23.12	23.12
Cement	25.49	25.64	58.42	58.42
IT	19.36	19.35	12.75	12.75
General Insurance	20.31	20.16	29.51	30.20
Life Insurance	27.38	26.34	81.37	81.37
Telecom	15.34	15.33	139.90	139.90
Travel & Leisure	19.06	27.77	9.85	7.10
Miscellaneous	7.77	7.79	135.85	131.94
Stock Exchanges	14.53	14.22	43.90	43.71

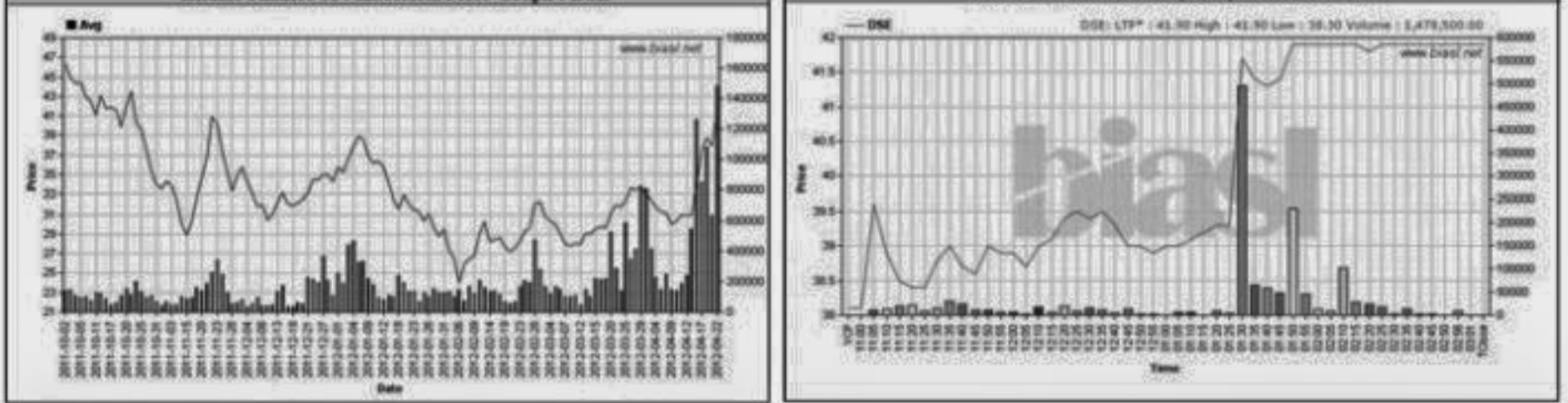
All the above PE and EPS are estimated to get a relative idea only and not calculated by any of the stock exchanges.

Prepared exclusively for Daily Star by Business Information Automation Service Line (BIASL) on the basis of information collected from daily stock quotations and audited reports of the listed companies. High level of caution has been taken to collect and present the above information and data. The publisher will not take any responsibility if any body uses this information and data for his/her investment decision. For any query please email to biasl@bol-online.com or call 01552153562 or go to www.biasl.net

Capital Gainers

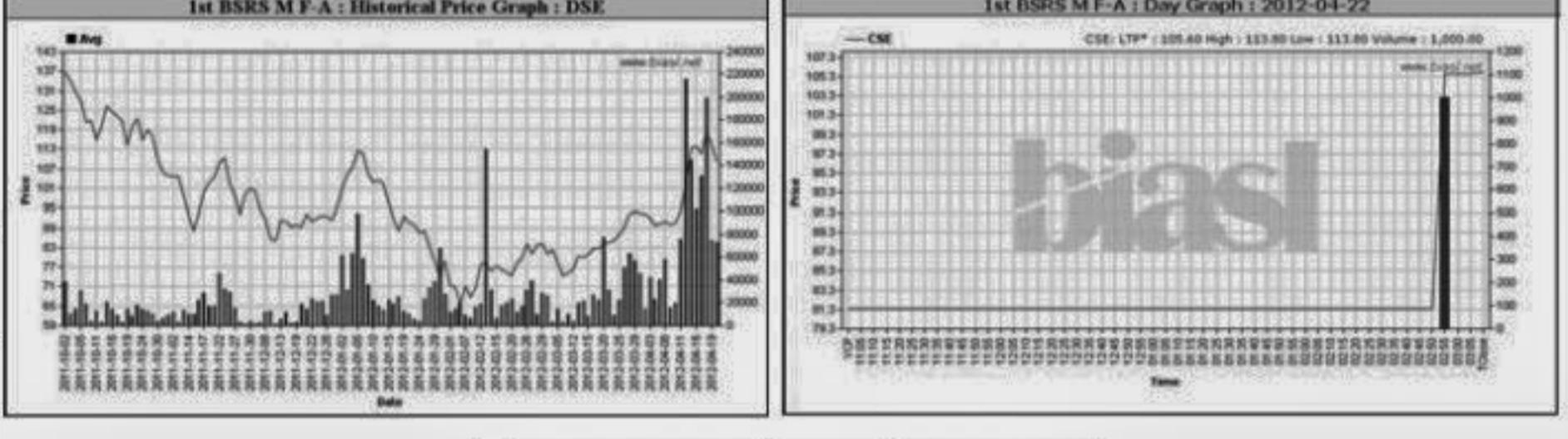
Dhaka Stock Exchange

Company	Price Chn. (%)		Price Scale				Turnover		BookV		PE	
	Close	Avg.	Avg.	Close	DayHi	DayLo	Yr Hi	YrLo	M.Tk	Per S		EPS
Islamic Finance-A	9.97	7.77	40.90	41.90	41.90	38.30	57.00	23.7	60.522	12.61	0.36	113.61
Modern Dyeing-Z	9.83	9.83	44.70	44.70	44.70	44.70	58.2	32.0	0.002	9.35	-0.64	-69.84
Legacy Footwear -A	9.76	8.10	36.45	37.10	37.10	33.00	57.6	23.4	14.089	19.45	1.04	35.05
Northern Jute -Z	9.70	9.70	26.00	26.00	26.00	26.00	48.4	17.0	0.005	8.6	-8.19	-3.17
Jute SpinnersA	9.57	7.75	107.62	108.80	109.20	103.00	203.9	94.1	5.397	56.59	4.87	22.10
GPH Ispat Ltd-N	9.47	12.73	78.47	79.80	80.00	73.10	80.0	63.0	129.008	16.18	2.85	27.53
AramitCementA	7.78	4.27	124.26	126.10	127.30	109.80	152.5	63.4	25.790	9.49	5.15	24.13
LankaBangla Fin. -A	6.99	1.87	105.99	110.20	113.00	97.00	224.9	59.1	231.362	34.55	4.18	25.36
GQ Ball PenA	6.94	3.85	230.21	235.90	238.80	210.00	284.0	126.4	52.665	111.95	5.3	43.44
Beximco Pharma -A	6.19	5.05	101.68	102.90	105.00	87.30	123.3	55.5	401.221	78.53	5.17	19.67



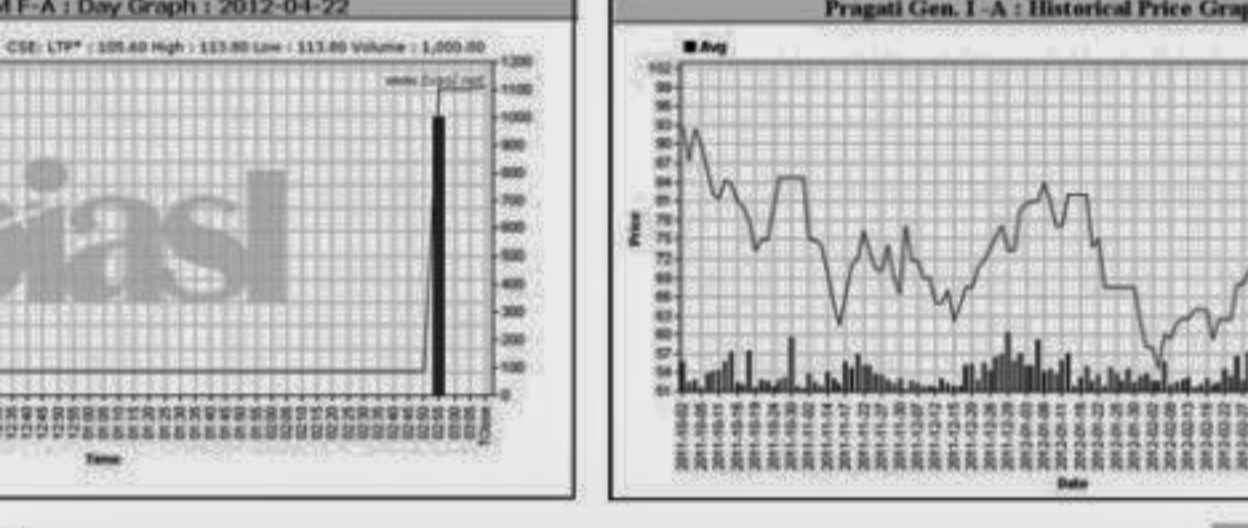
Chittagong Stock Exchange

Company	Vol.	Value	% of Total	Big Lot	Price Scale			C.Pite	BookV			
	Share	(M.Tk.)	Total	Lot	Avg.	Close	DayHi	DayLo	Chn%	Per S	EPS	PE
1st BSRS M F-A	29.98	29.98	105.80	105.80	113.80	113.80	164.9	80.0	0.106	161.88	14.43	7.33
GPH Ispat Ltd-N	14.99	13.26	78.51	79.80	80.00	72.10	80.0	63.0	22.808	16.18	2.85	27.55
Islamic Finance-A	9.89	7.40	40.21	41.10	37.40	37.40	60.0	23.1	2.974	12.61	0.36	111.69
Legacy Footwear -A	9.65	9.07	37.15	37.50	37.50	34.10	57.0	23.7	0.894	19.45	1.04	35.72
Beximco Pharma -A	7.28	5.41	101.29	103.10	99.90	97.00	144.0	50.0	39.416	78.53	5.17	19.59
LankaBangla Fin. -A	6.49	2.12	105.92	109.90	103.00	103.00	250.0	60.1	16.067	34.55	4.18	25.34
First Lease-A	5.76	1.86	61.84	62.40	59.00	59.00	130.0	49.7	0.665	14.48	1.37	45.14
GQ Ball PenA	5.43	5.22	230.76	231.10	219.20	219.20	285.0	126.0	0.298	111.95	5.3	43.54
S. Alam CR Steel -A	5.02	2.13	63.80	64.90	61.80	61.80	54.8	54.8	6.358	18.64	2.75	23.20
Rahima Food -A	4.35	2.01	28.42	28.80	27.60	27.60	36.3	36.3	0.639	4.78	0.82	34.66



Chittagong Stock Exchange

Company	Vol.	Value	% of Total	Big Lot	Price Scale			C.Pite	BookV			
	Share	(M.Tk.)	Total	Lot	Avg.	Close	DayHi	DayLo	Chn%	Per S	EPS	PE
Phoenix Finance-A	-21.27	-22.24	79.75	80.30	83.00	74.00	130.0	48.6	85.385	20.35	2.93	27.22
Northern G Insur-A	-15.11	-15.10	41.09	41.00	42.50	38.30	80.3	33.3	4.543	10.51	1.31	31.37
Pragati Gen. I -A	-12.03	-13.00	84.66	84.80	86.00	83.00	125.0	54.5	2.633	52.13	2.15	39.38
National Life I -A	-10.82	-9.78	418.26	408.90	430.00	400.00	788.0	284.0	43.072	80.99	12.34	33.89
Union Capital -A	-8.19	-8.39	52.19	51.60	57.00	50.60	113.4	35.1	64.836	12.41	1.7	30.70
Kohinoor Chem -A	-7.14	-8.15	195.00	195.00	195.00	195.00	262.9	158.0	0.098	-13.07	7.41	26.32
1st BSRS M F-A	-6.93	-4.71	109.21	104.70	112.50	103.10	164.8	64.0	7.918	161.88	14.43	7.57
Imam Button-Z	-6.00	-6.19	14.10	14.10	14.20	13.80	52.5	12.8	0.148	7.35	-1.74	-8.10
DESCO Ltd. -A	-5.55	-5.94	108.71	107.30	116.00	103.50	203.8	59.4	193.119	45.98	7.1	15.31
Savar Refractories-B	-4.33	-4.51	66.30	66.30	66.30	66.30	91.5	44.8	0.007	11.59	1.17	56.67



Turnover Leaders

Dhaka Stock Exchange

Company	Vol.	Value
---------	------	-------